

---

# AMY HAKALA

## PORTFOLIO



# CRUISE SHIP

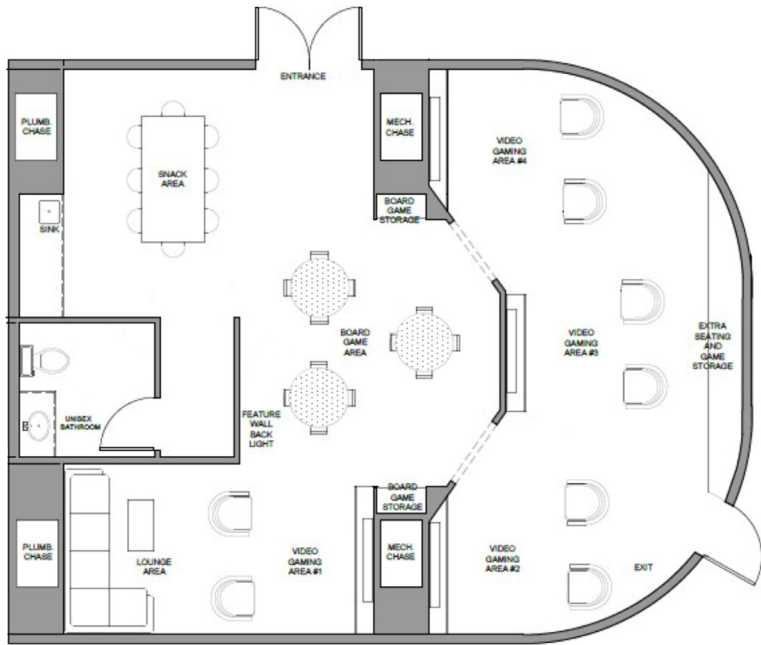
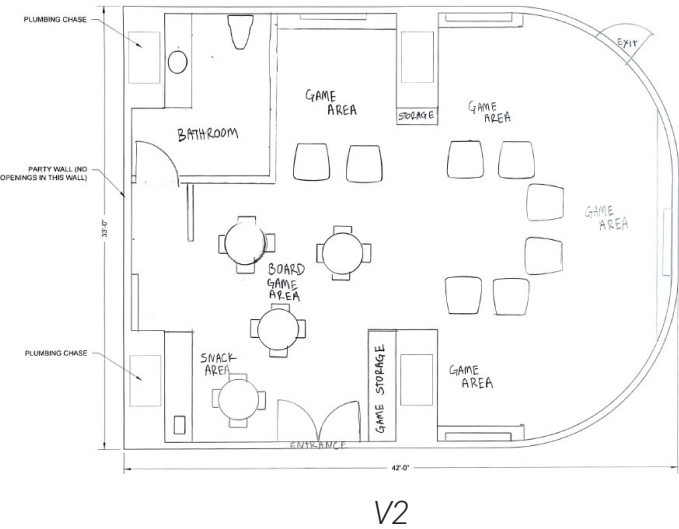
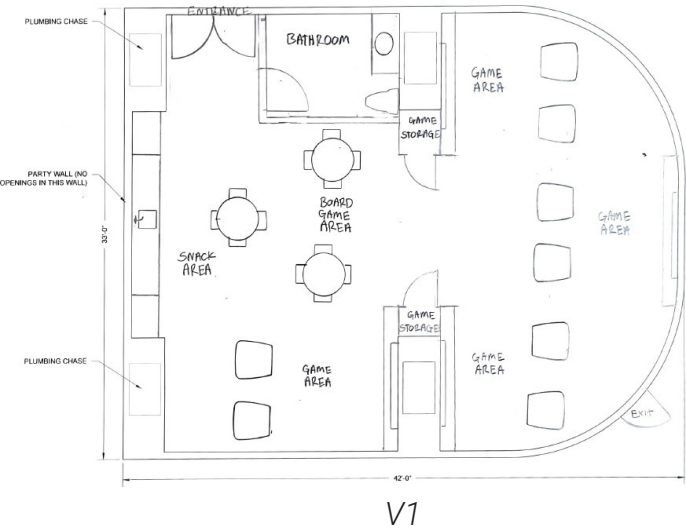
COMMERCIAL REMODEL

## DESIGN CONCEPT

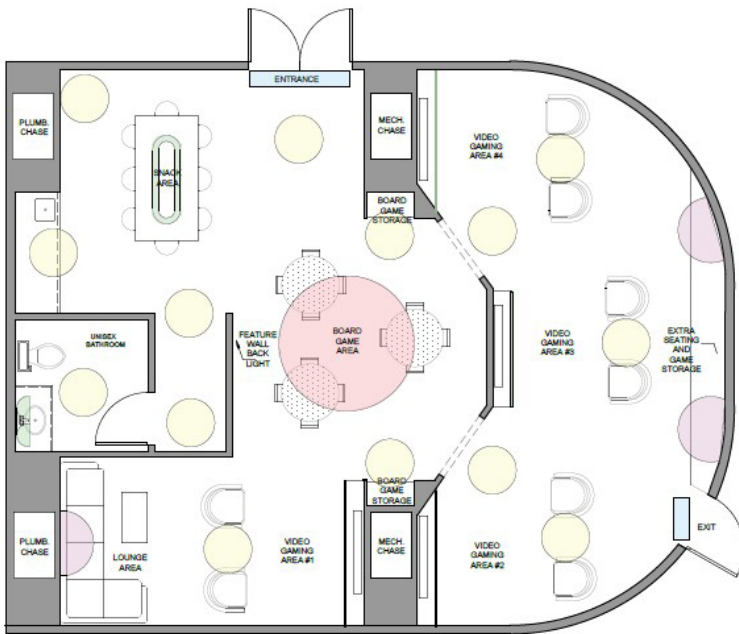
Designed as a haven for adventure and connection, this space invites teenagers aboard a cruise ship to gather, interact, and explore within a steampunk-inspired world of discovery. Drawing inspiration from the age of invention and the thrill of exploration, the design captures the spirit of a journey powered by imagination.

Every detail within the space contributes to a sense of wonder and motion—warm metallic finishes, exposed gears, and ambient lighting evoke the feeling of being inside a great mechanical vessel on a voyage through time. The layout encourages both social interaction and individual curiosity, with zones for gaming, collaboration, and relaxation.

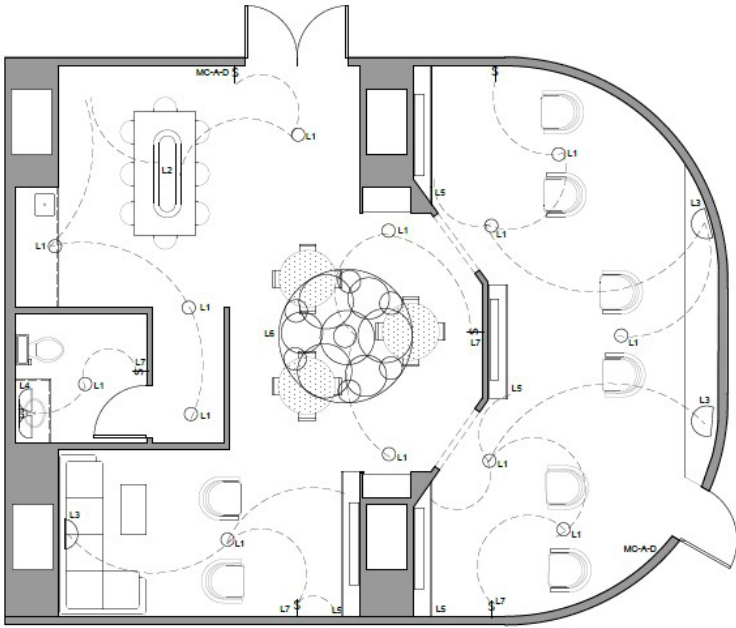
By blending industrial textures with rich, warm tones and dynamic lighting, the space becomes more than just a lounge—it becomes an immersive environment where teens can connect, create memories, and experience the excitement of adventure at sea.



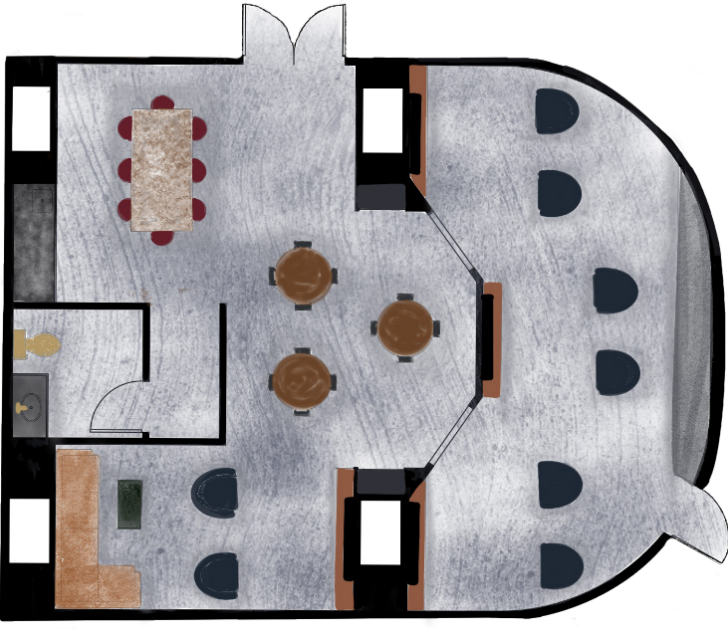
AFTER PLAN



LIGHTING LAYERS



RCP PLAN

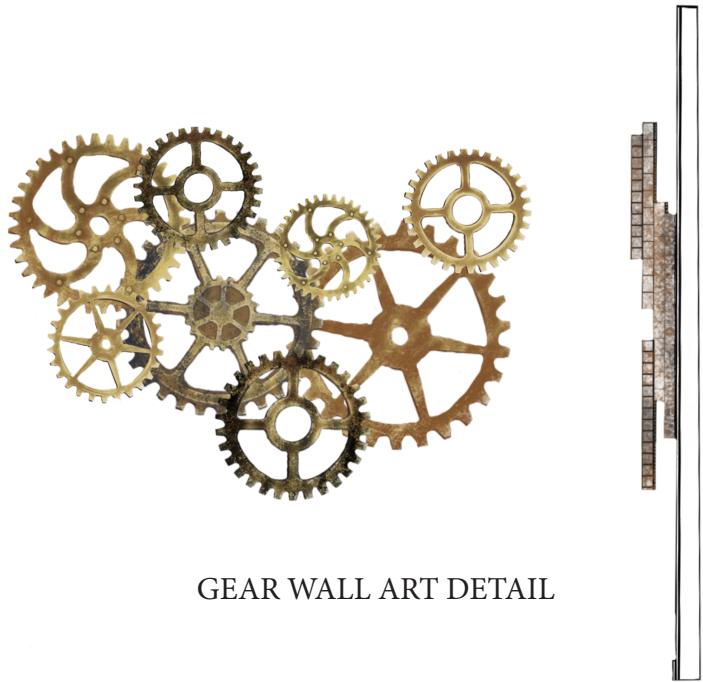


AFTER PLAN RENDERED

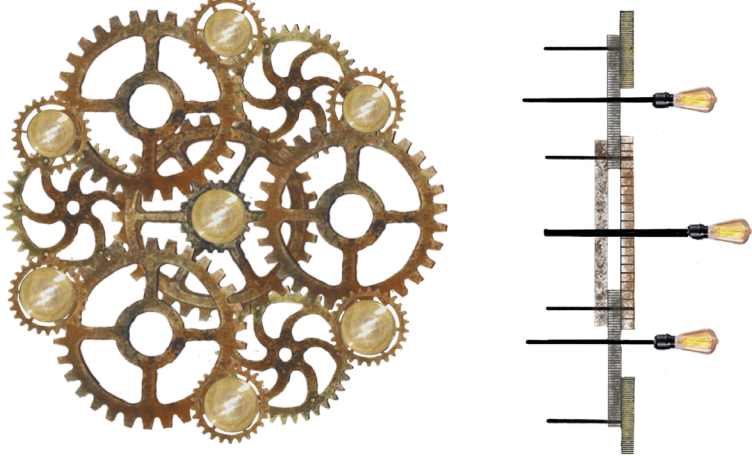




# CRUISE SHIP



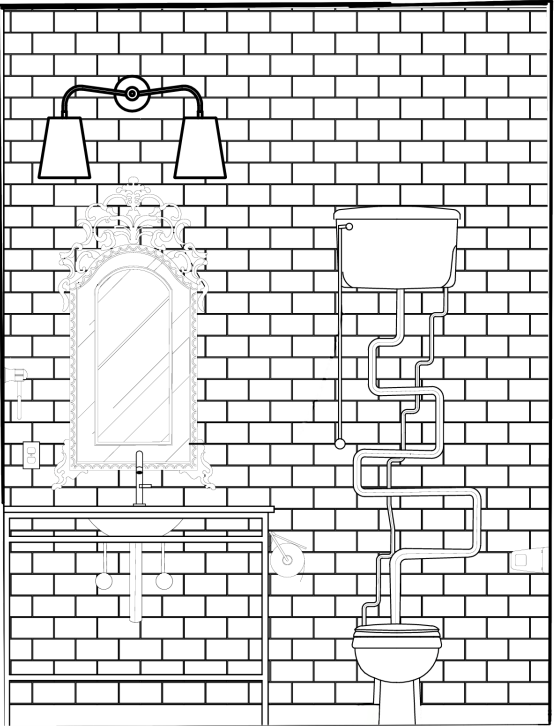
GEAR WALL ART DETAIL



CUSTOM LIGHT DETAIL



FURNITURE SELECTION



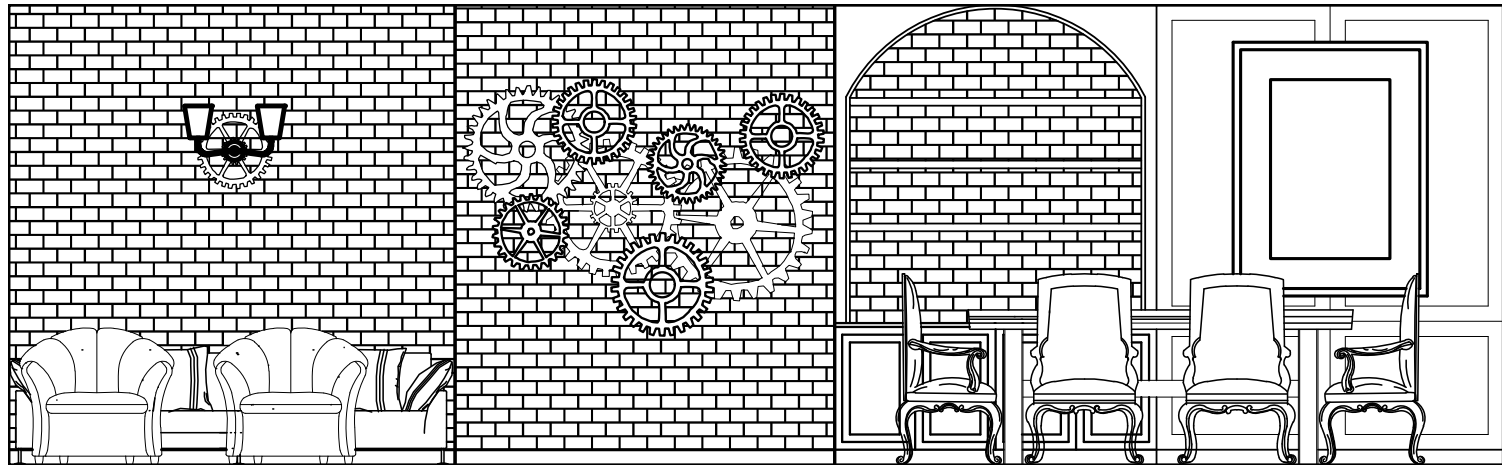
BATHROOM ELEVATION



BATHROOM ELEVATION RENDER



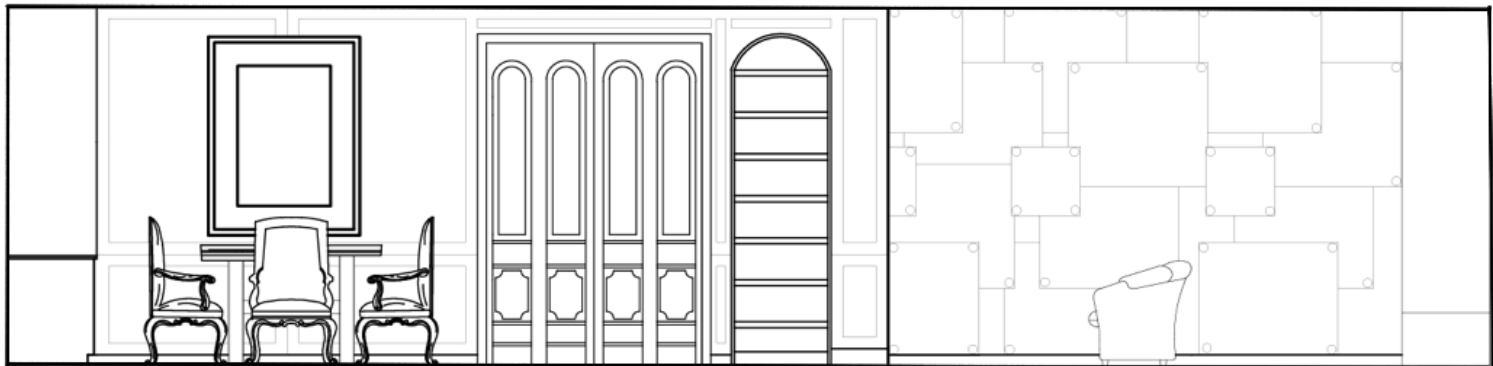
# CRUISE SHIP



WEST ELEVATION



WEST ELEVATION RENDER



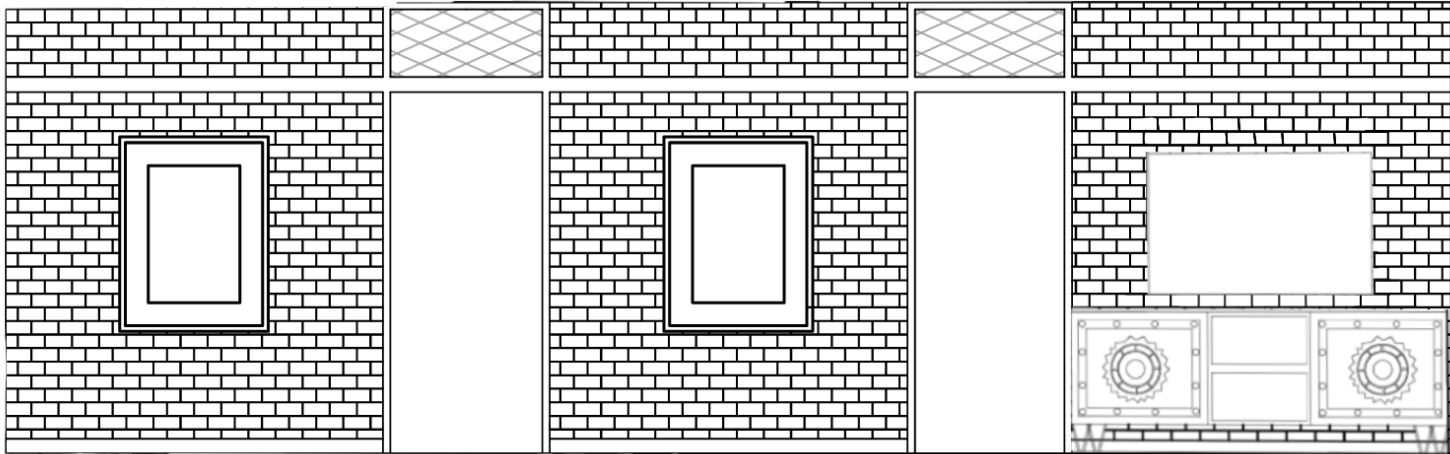
NORTH ELEVATION



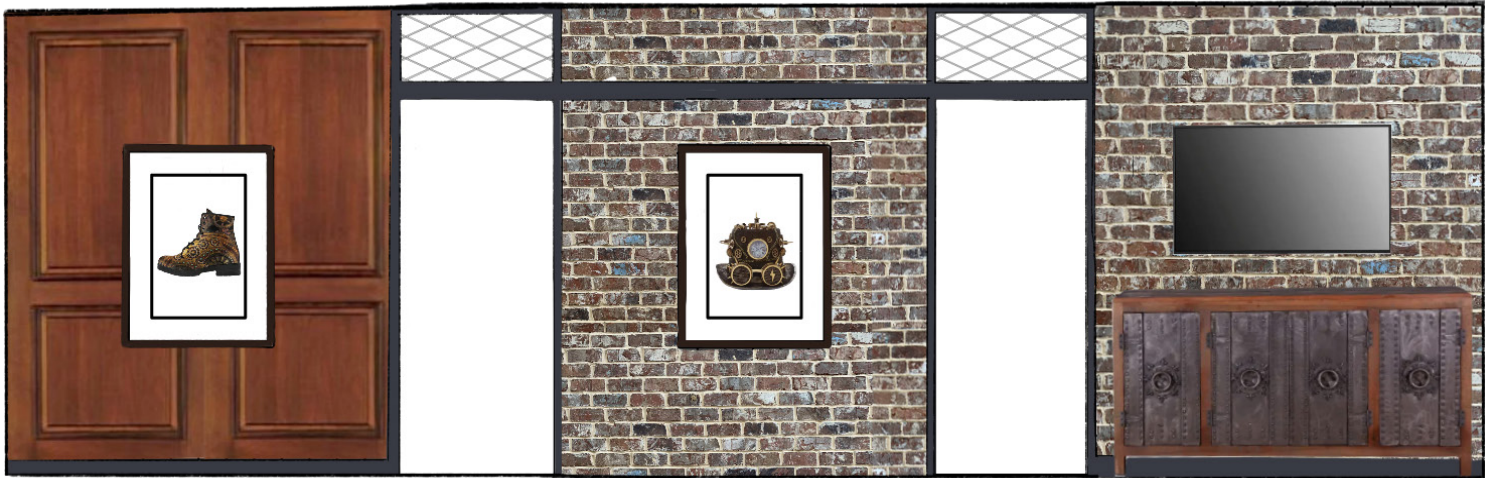
NORTH ELEVATION RENDER



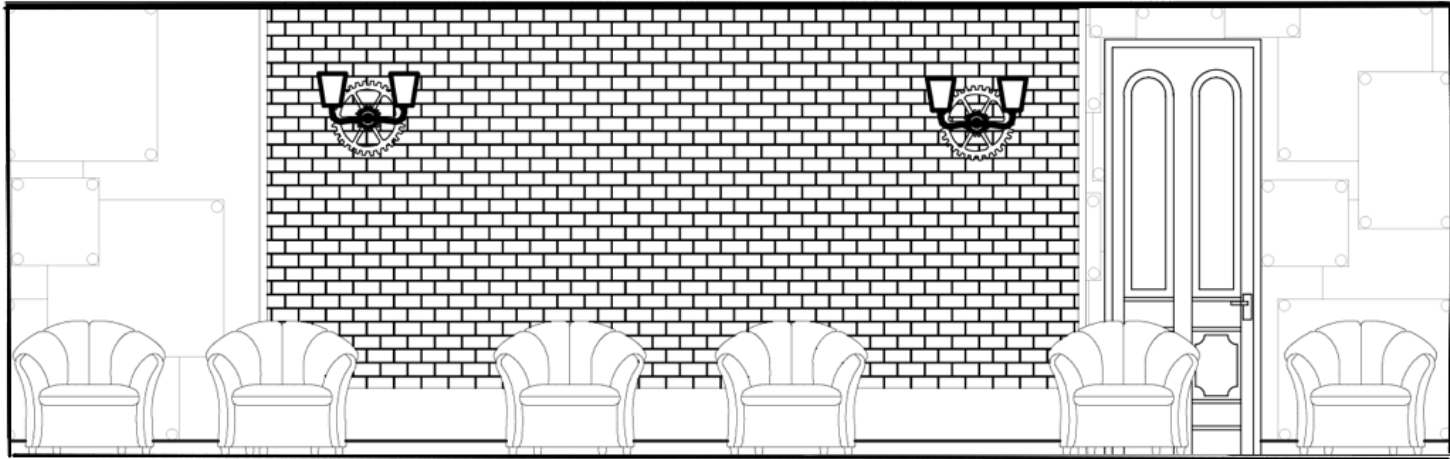
# CRUISE SHIP



INTIRIOR EAST ELEVATION



INTIRIOR EAST ELEVATION RENDER



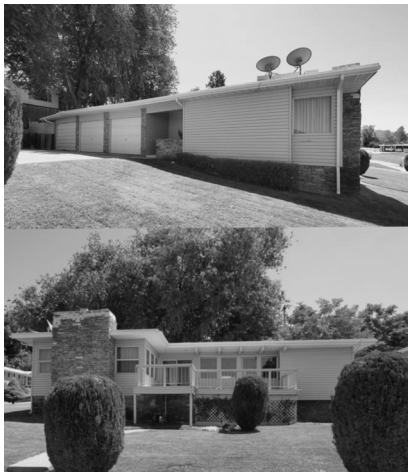
EAST ELEVATION



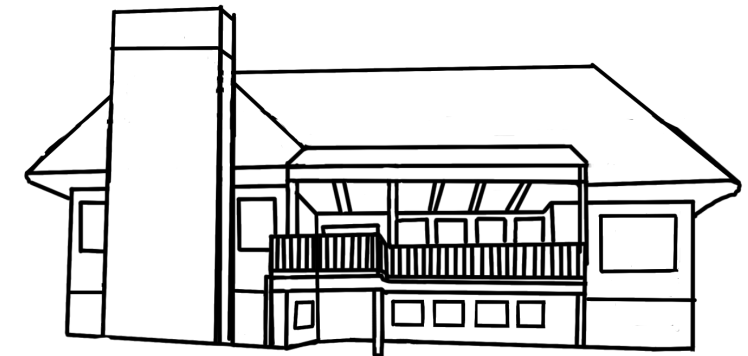
EAST ELEVATION RENDER

# BOUNTIFUL HOUSE

RESIDENTIAL REMODEL



EXISTING HOUSE



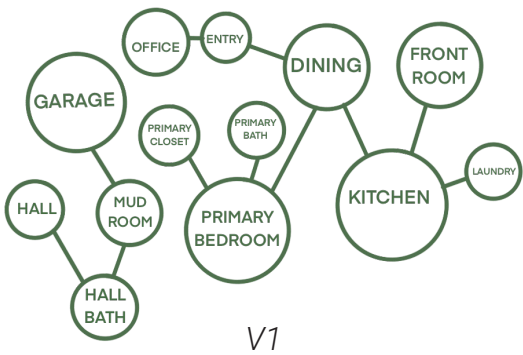
EXTERIOR SKETCH

## CLIENT PROFILE

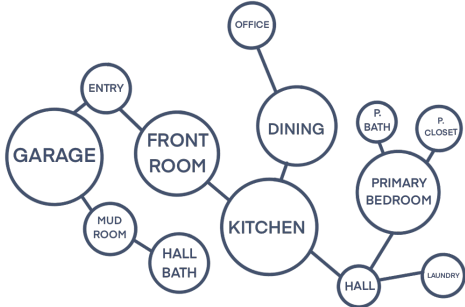
Travis and Amy love their community in Bountiful, Utah, but they’ve never felt the same way about their home. Now, they are ready to reimagine their two-story, 1,176-square-foot house into a space that truly reflects their lifestyle and values.

Function has always been their greatest frustration. As a healthcare construction project manager, Travis understands the importance of efficient layouts and thoughtful planning. Amy, a current Interior Design student, brings creativity and a clear sense of aesthetic direction. Together, they have a strong vision for what their home can become. With four children who are growing up and beginning to leave home, Travis and Amy are preparing for their next stage of life as future empty nesters. They envision a home that adapts to their evolving needs—comfortable and functional for two, yet welcoming for family gatherings. To accommodate visits from their children. The design includes bedroom suites in the basement, offering privacy and comfort for returning guests.

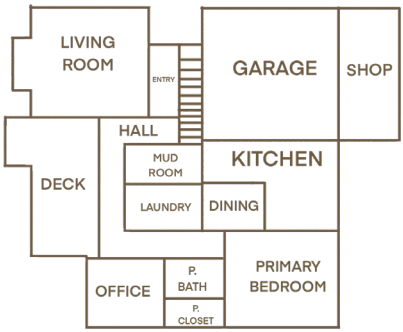
Beyond their immediate family, Travis and Amy have a large extended family and love to host and entertain. Creating open, connected spaces that encourage togetherness is a key priority for their renovation. The new design emphasizes functional flow, gathering zones, and a balance of warmth and sophistication—allowing their home to become the heart of family life for years to come.



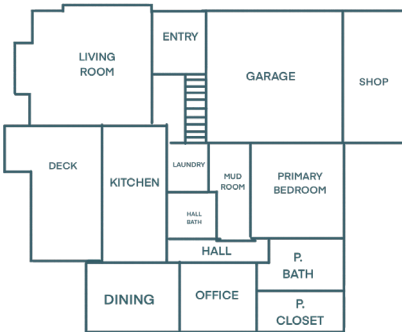
V1



V2



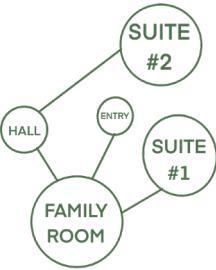
V3



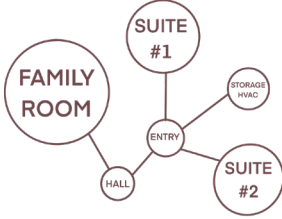
V4

BUBBLE DIAGRAMS MAIN FLOOR

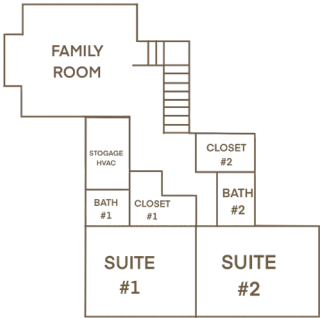
BLOCK DIAGRAMS MAIN LEVEL



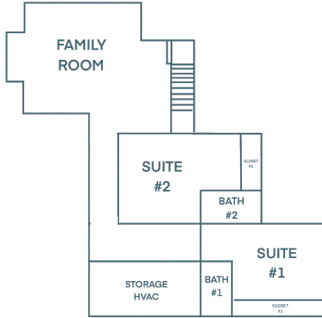
V1



V2



V3



V4

BUBBLE DIAGRAMS LOWER LEVEL

BLOCK DIAGRAMS LOWER LEVEL

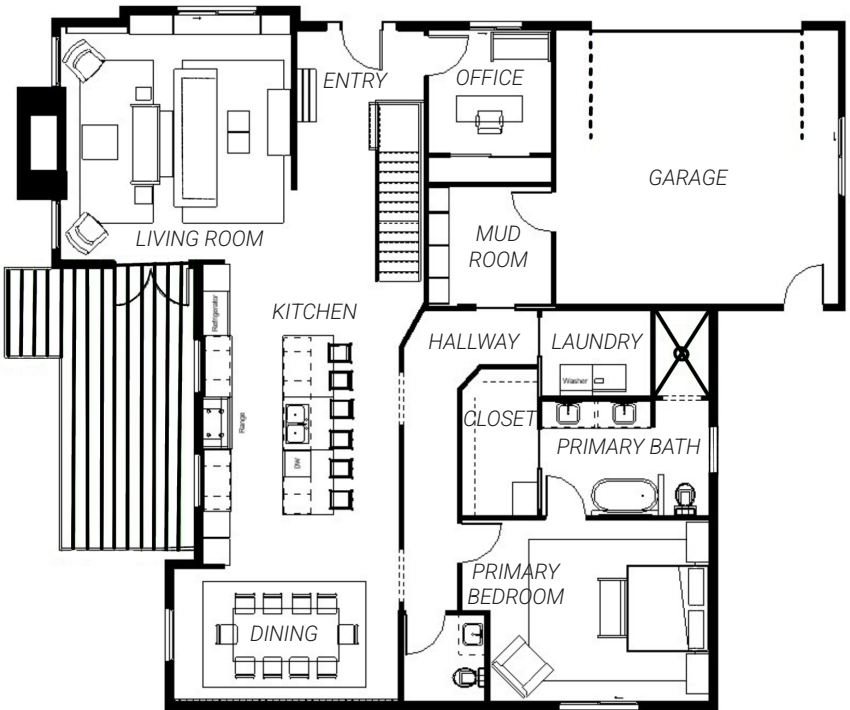




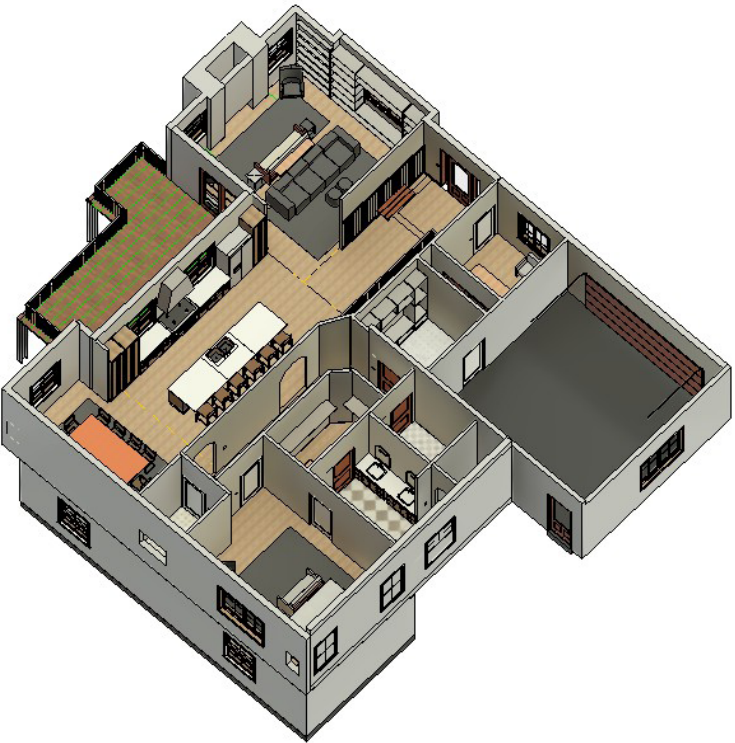
# BOUNTIFUL HOUSE



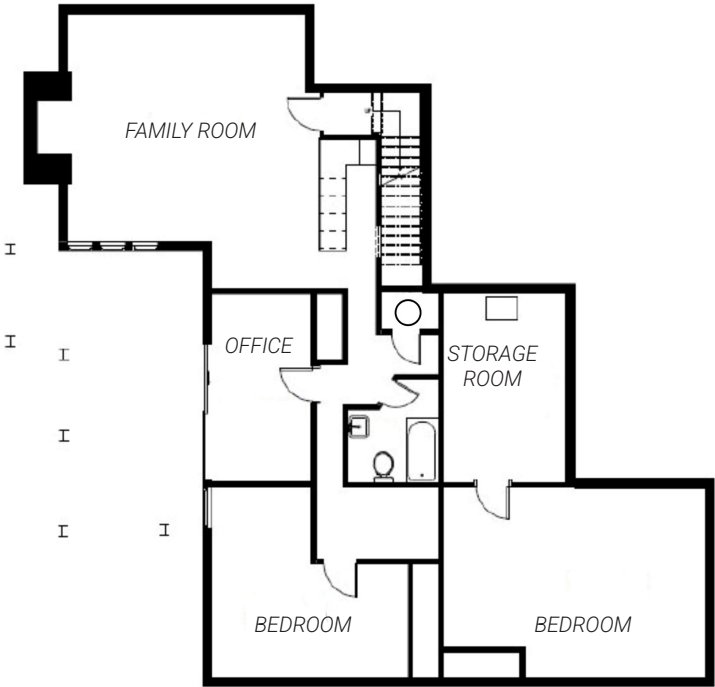
MAIN FLOOR BEFORE PLAN



MAIN FLOOR AFTER PLAN



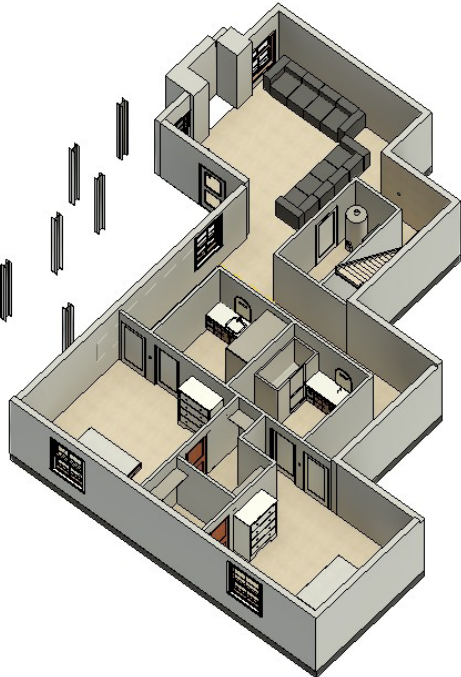
MAIN FLOOR ISOMETRIC



LOWER LEVEL BEFORE PLAN



LOWER LEVEL AFTER PLAN



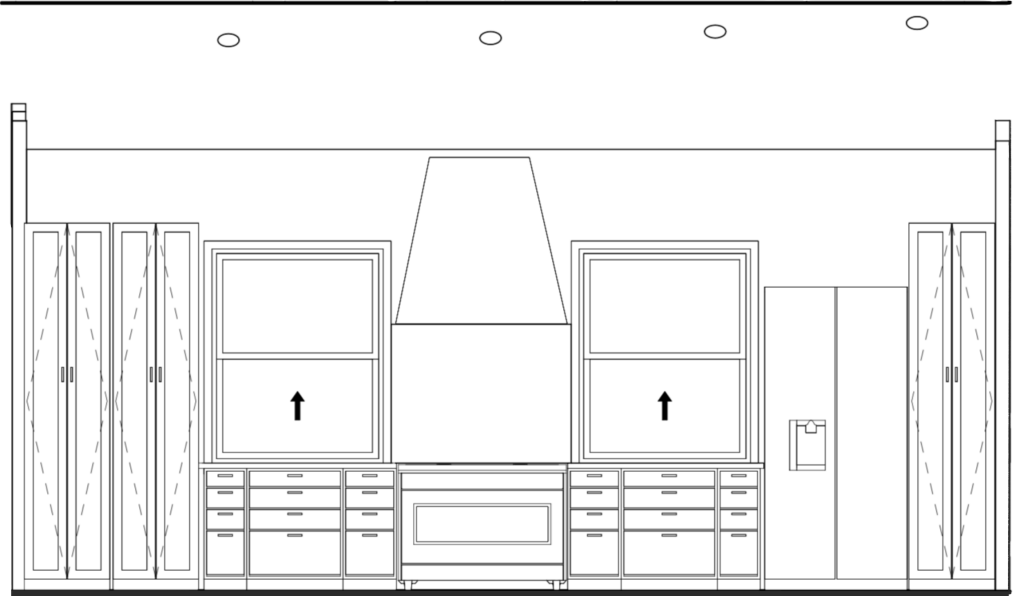
MAIN FLOOR ISOMETRIC



# BOUNTIFUL HOUSE



KITCHEN MATERIALS



KITCHEN WEST ELEVATIONS



KITCHEN WIREFRAME





# BOUNTIFUL HOUSE

---

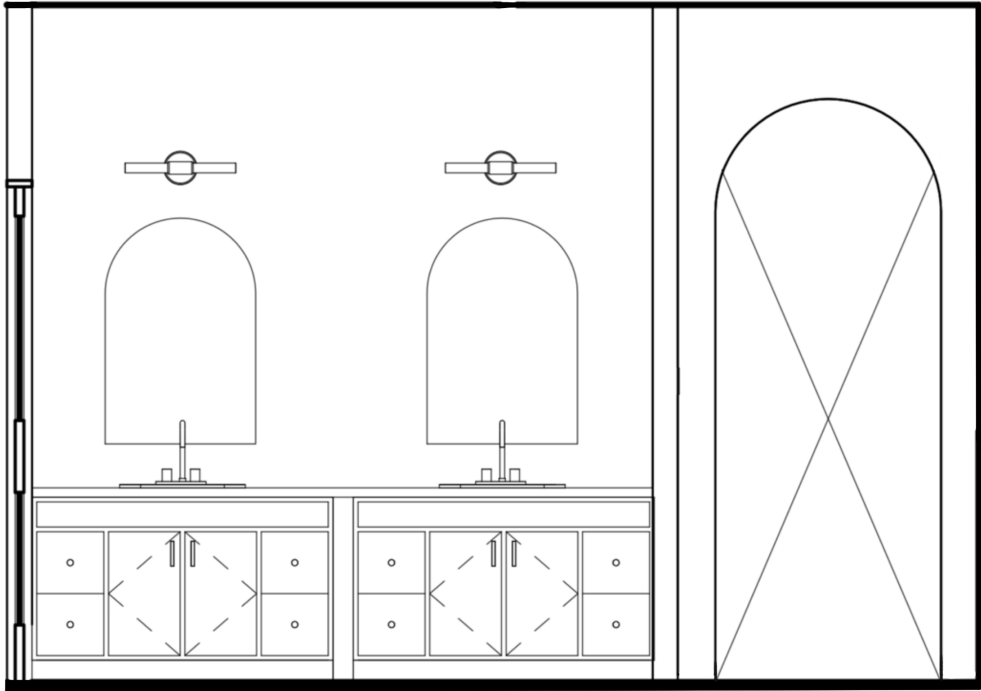


KITCHEN RENDER

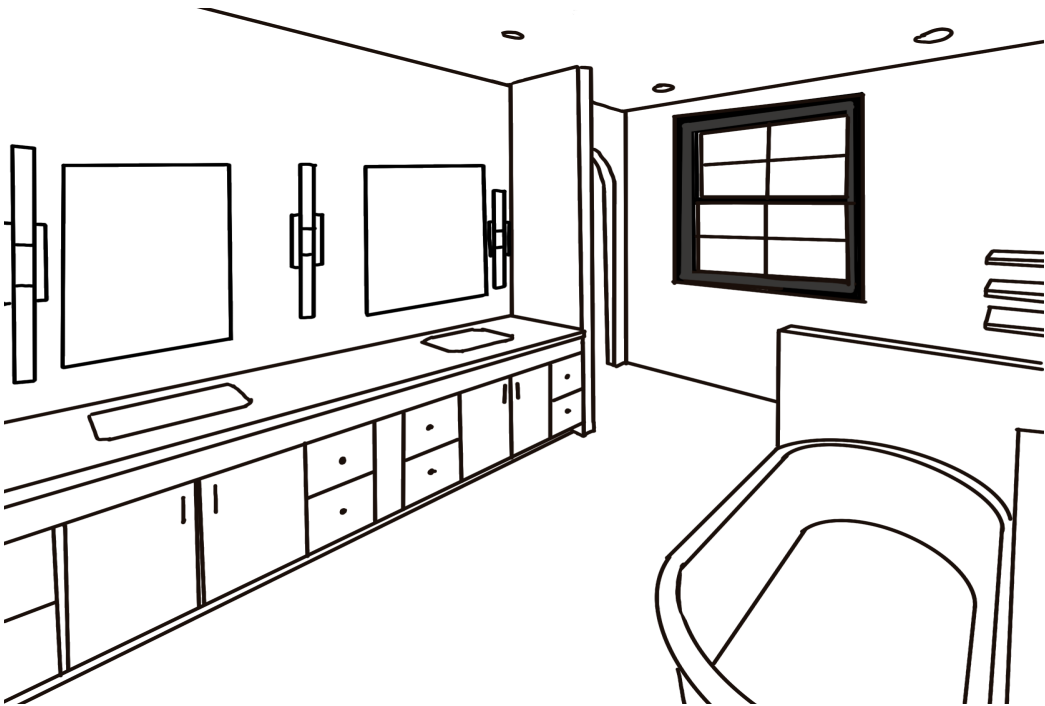
# BOUNTIFUL HOUSE



PRIMARY BATHROOM MATERIALS



PRELIMINARY BATHROOM ELEVATION



BATHROOM WIREFRAME





# BOUNTIFUL HOUSE

---



PRIMARY BATHROOM RENDER



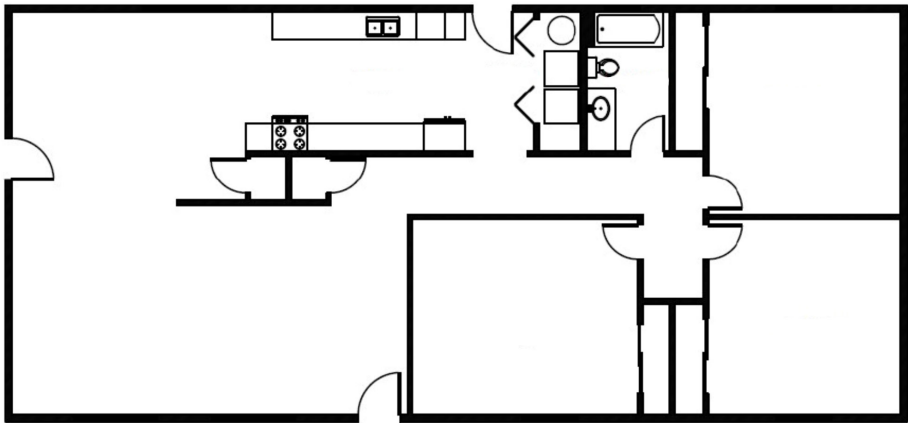
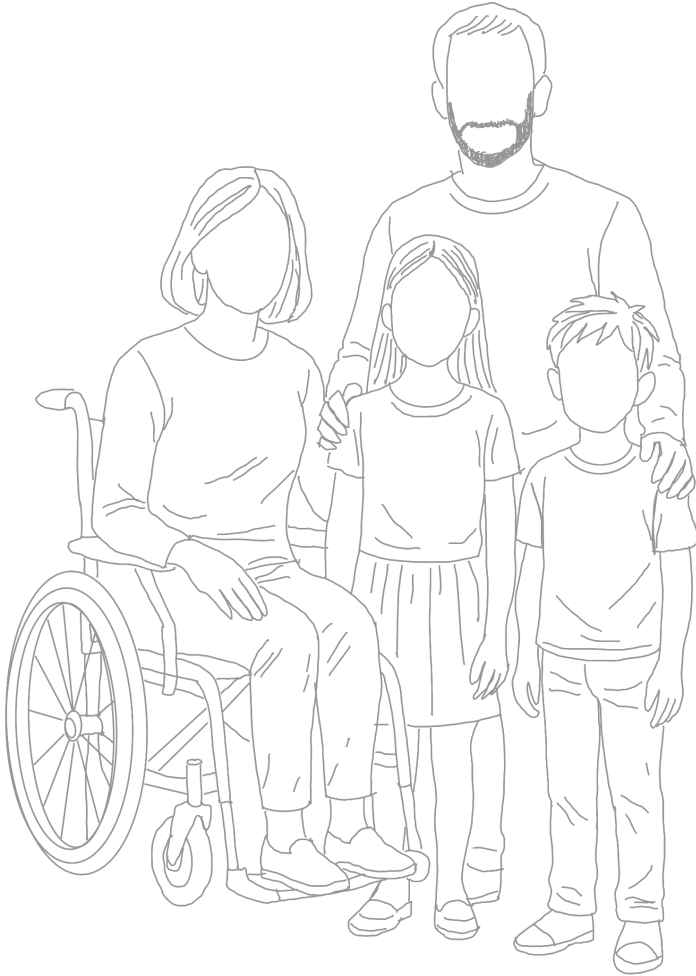
# UNIVERSAL HOUSE

RESIDENTIAL REMODEL.

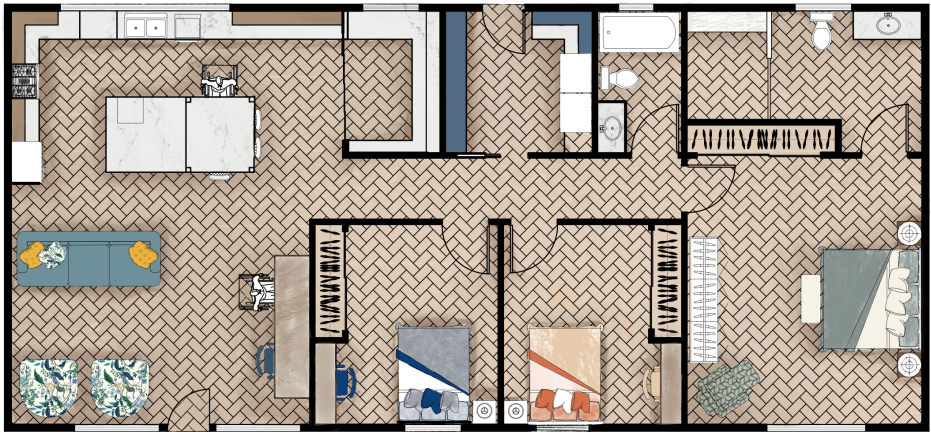
When Julie began facing health challenges that limited her mobility, her family knew their home needed to evolve with her.

This remodel was designed to provide both accessibility and beauty—featuring a spacious kitchen with an ADA-compliant counter and a walk-in pantry that is easy to access.

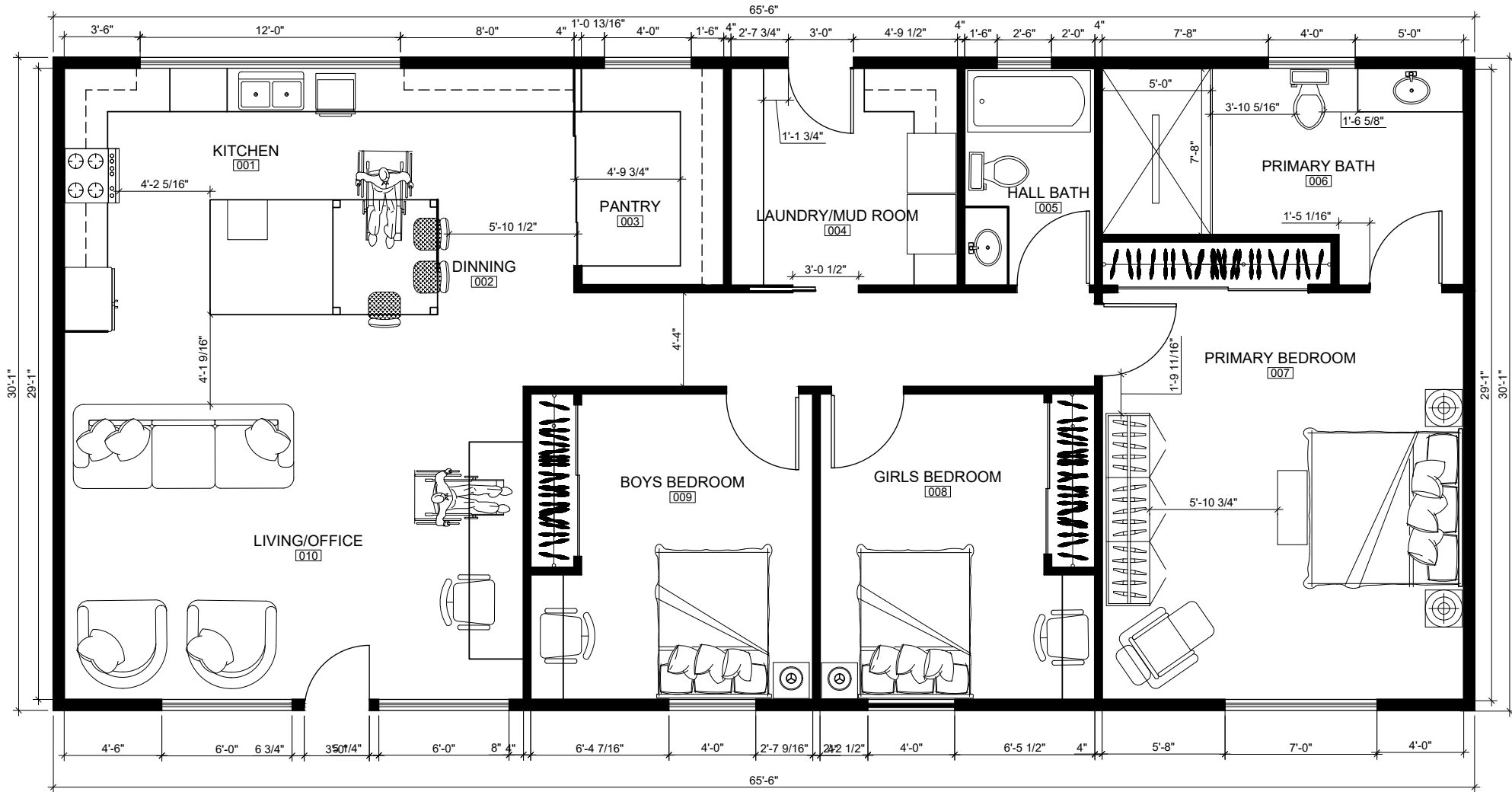
Every element was created with the goal of fostering independence and focusing on what Julie can do, rather than what she can't.



BEFORE PLAN



AFTER PLAN RENDER

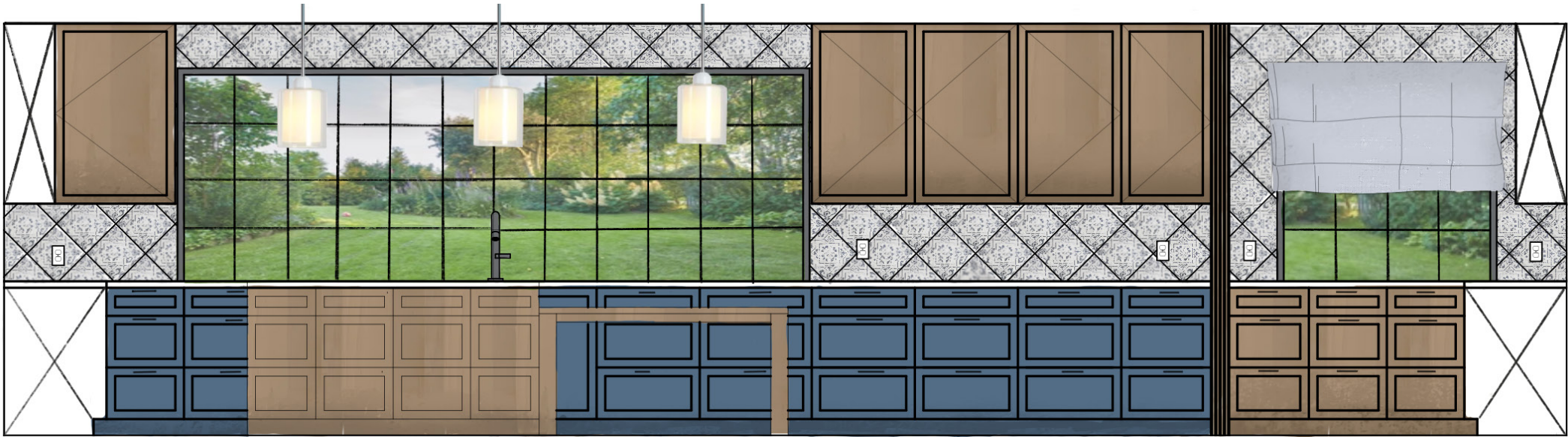


AFTER PLAN





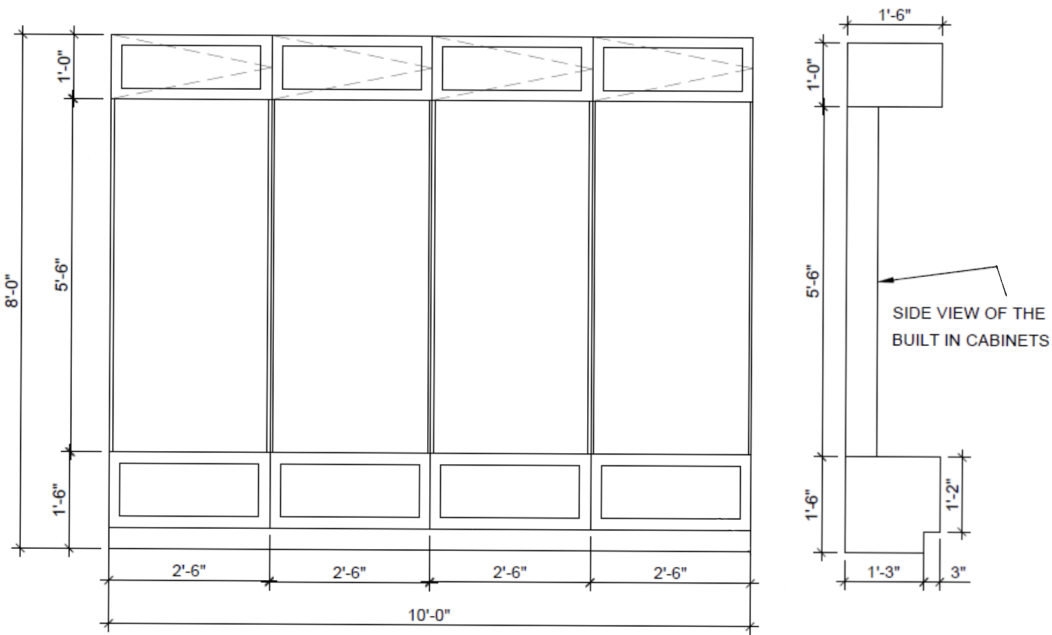
# UNIVERSAL HOUSE



KITCHEN/ PANTRY NORTH WALL RENDER



PANTRY DOOR MULTI PANEL POCKET DOOR



MUDROOM DETAIL



MATERIALS SELECTIONS

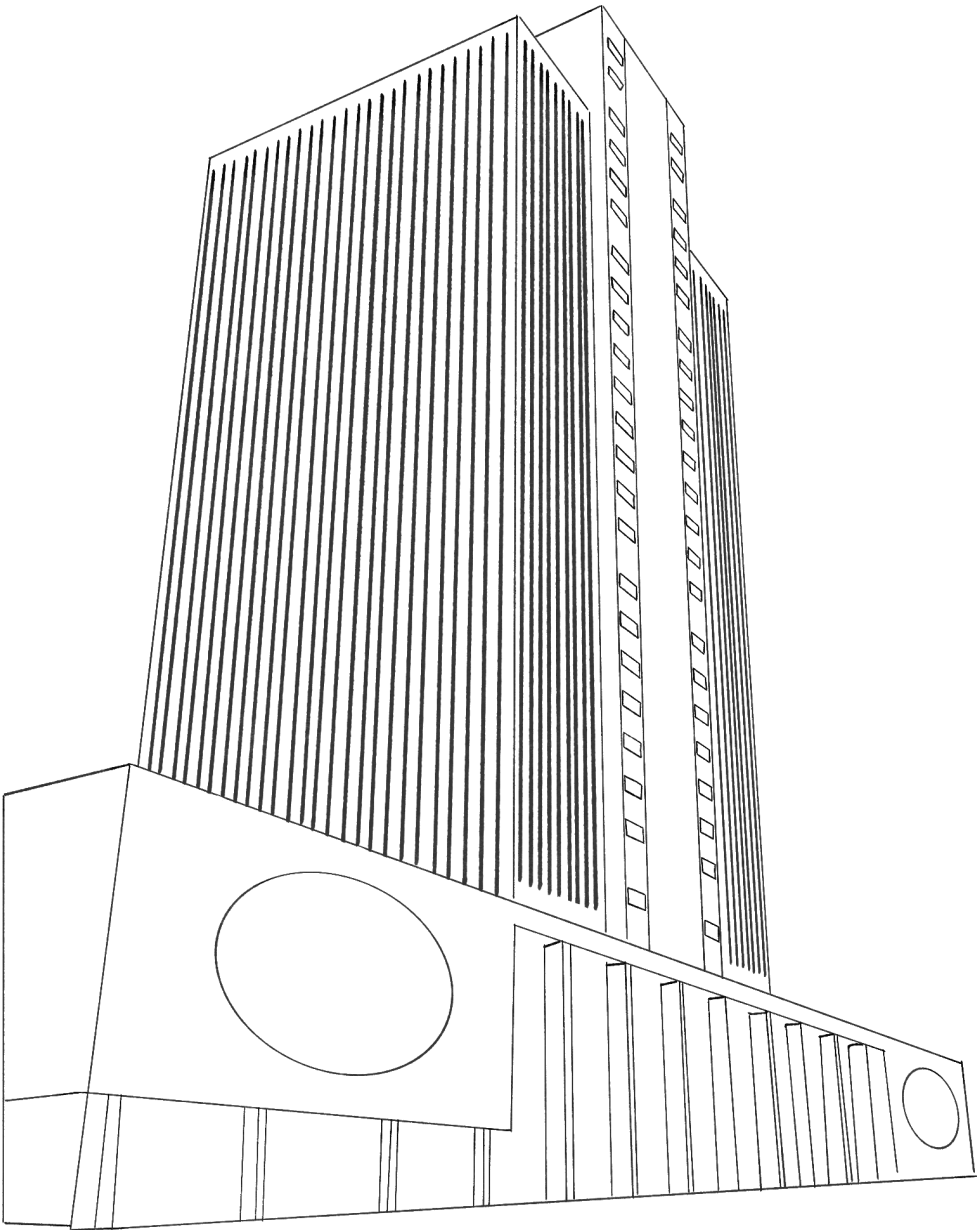


LAUNDRY RENDER



# CHURCH OFFICE BLDG 7TH FLOOR

COMMERCIAL REMODEL



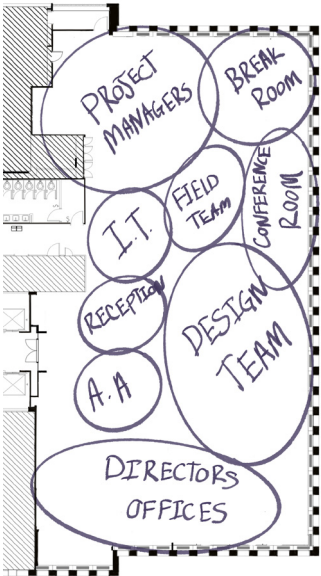
## DESIGN CONCEPT

The intent of this remodel is to update half of the 7th floor of the Church Office Building to provide a variety of work environments that support collaboration, focus, and flexibility. The new layout incorporates ample workstations and a range of collaborative zones, encouraging connection and creativity among employees.

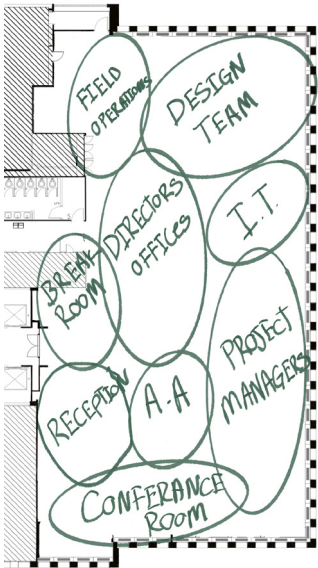
The concept for this design is inspired by the song “I Know My Heavenly Father Loves Me.”

Whenever I hear the song of a bird,  
Or look at the blue, blue sky,  
Whenever I feel the rain on my face,  
Or the wind as it rushes by,  
Whenever I touch a velvet rose,  
Or walk by our lilac tree,  
I'm glad that I live in this beautiful world  
Heavenly Father created for me.

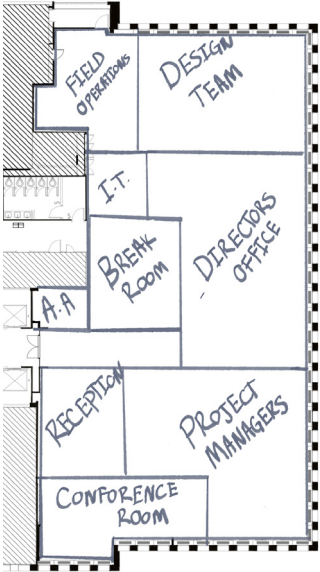
This song captures the profound beauty of nature and the quiet ways we can feel God’s love in the world around us. In our busy daily lives, it can be easy to overlook His presence. This design seeks to bring the feeling of nature indoors—serving as a gentle reminder of God’s hand in our lives.



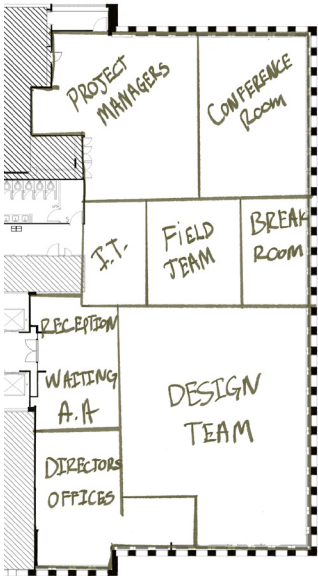
V1



V2



V3



V4

BUBBLE DIAGRAMS

BLOCK DIAGRAMS





# CHURCH OFFICE

## BLDG 7TH FLOOR

- A portion of the 7th floor of the church office building. This is a 10,000 sq ft space that needs to include
- \*Reception area with awaiting area and desk for the Administrative assistant.
  - \* Breakroom kitchenette and sink, central location
  - \* Small group meeting rooms, quick run in for a phone call or teams meeting.
  - \* Large conference room seating 30 people
  - \* 5 offices for directors. With 2 receiving chairs.
  - \* 39 desk specs/ cubicles
- Design team (10 People) island work counter with storage space drawers for presentation materials
- Field team (9 people) touch down in space
- IT team (5 people) com closet a place for storage space
- Project team (15 people)
- Widen hallways and create flex spaces that are more collaborative. Incorporate sit-stand desk options.



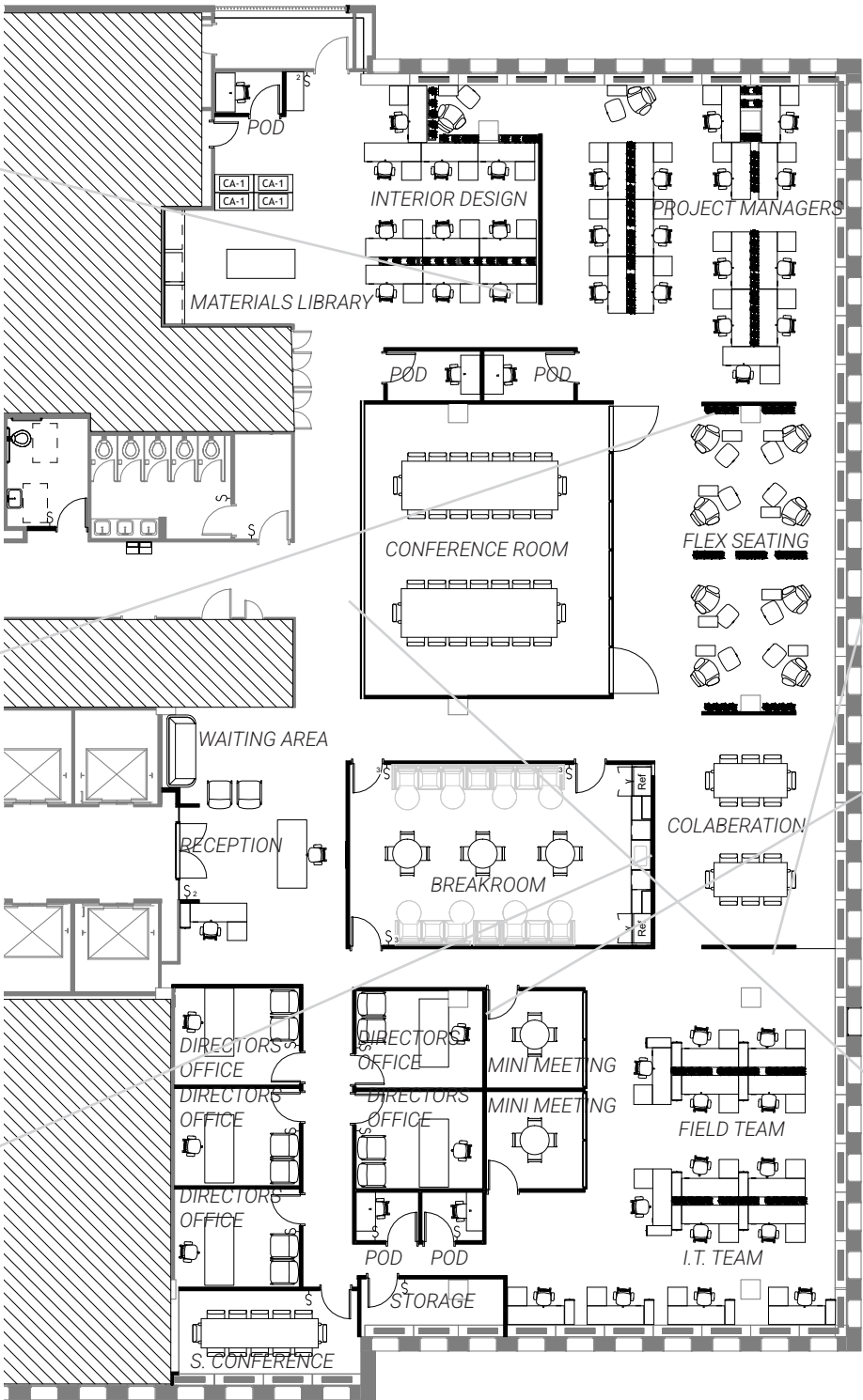
SONG OF THE BIRD



LOOK AT THE BLUE BLUE SKY



RAIN ON MY FACE



FINAL FLOOR PLAN



WIND AS IT RUSHES BY



TOUCH A VELVET ROSE



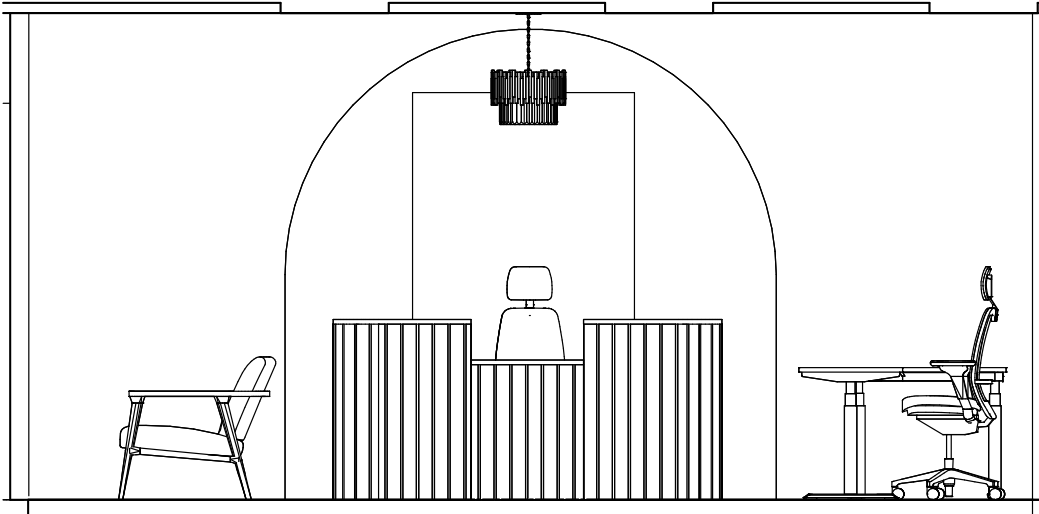
WALK BY A LILAC TREE



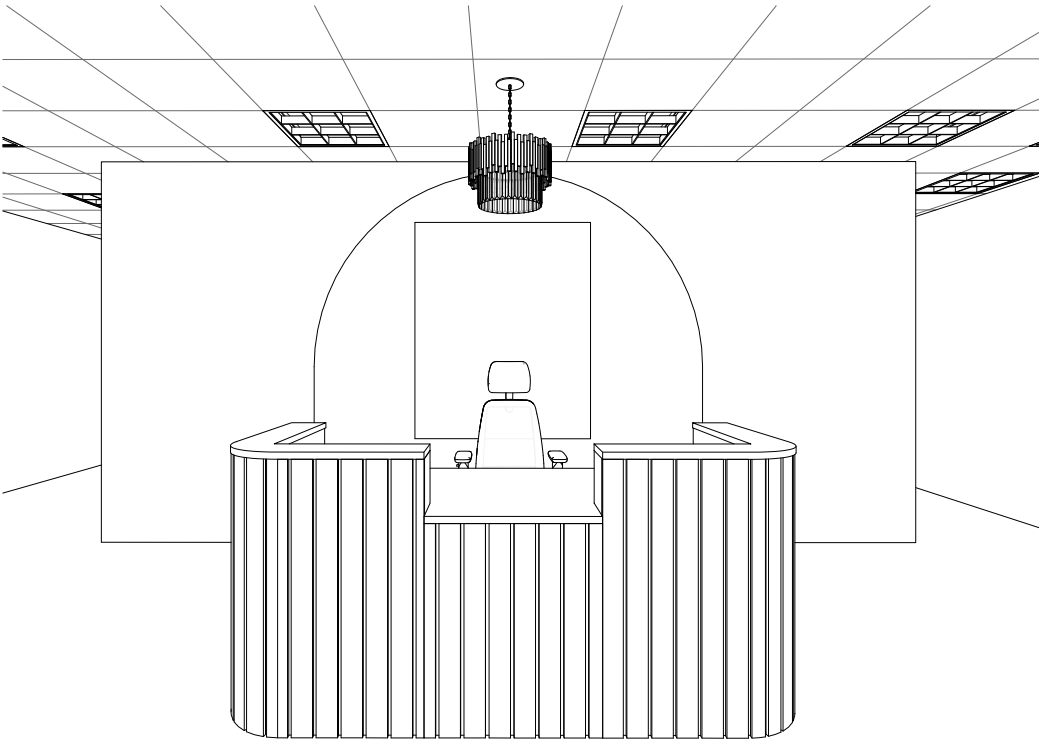
# CHURCH OFFICE BLDG 7TH FLOOR



RECEPTION MATERIALS



RECEPTION ELEVATION



RECEPTION WIREFRAME





CHURCH OFFICE  
BLDG 7TH FLOOR

---

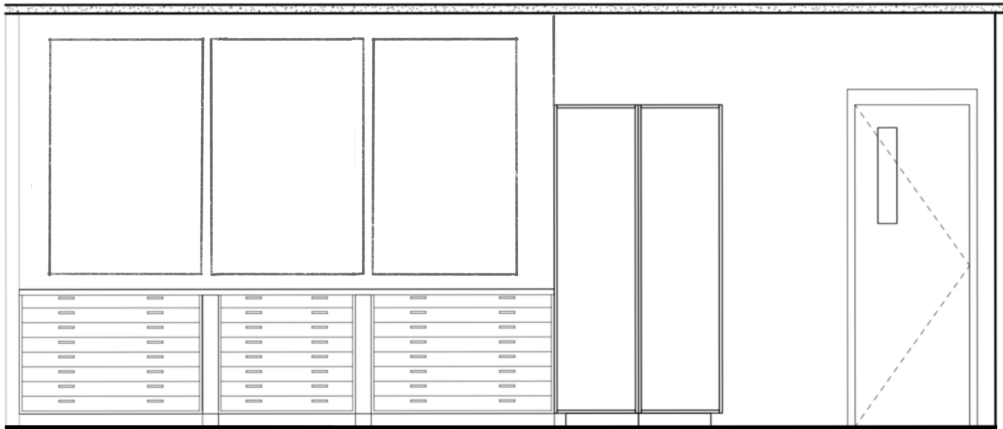


RECEPTION RENDER

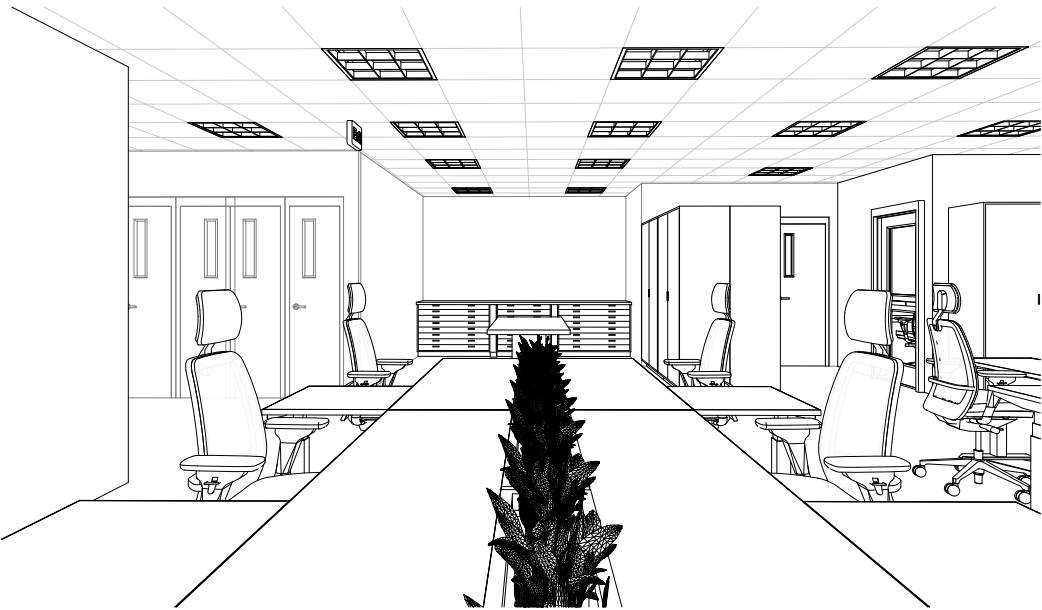
# CHURCH OFFICE BLDG 7TH FLOOR



DESIGN TEAM MATERIALS



DESIGN TEAM ELEVATION



DESIGN TEAM WIREFRAME



# CHURCH OFFICE

## BLDG 7TH FLOOR

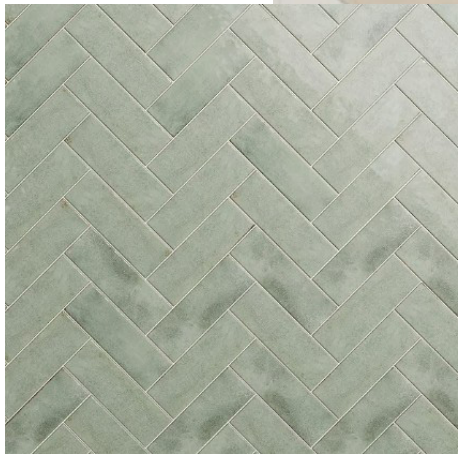
---



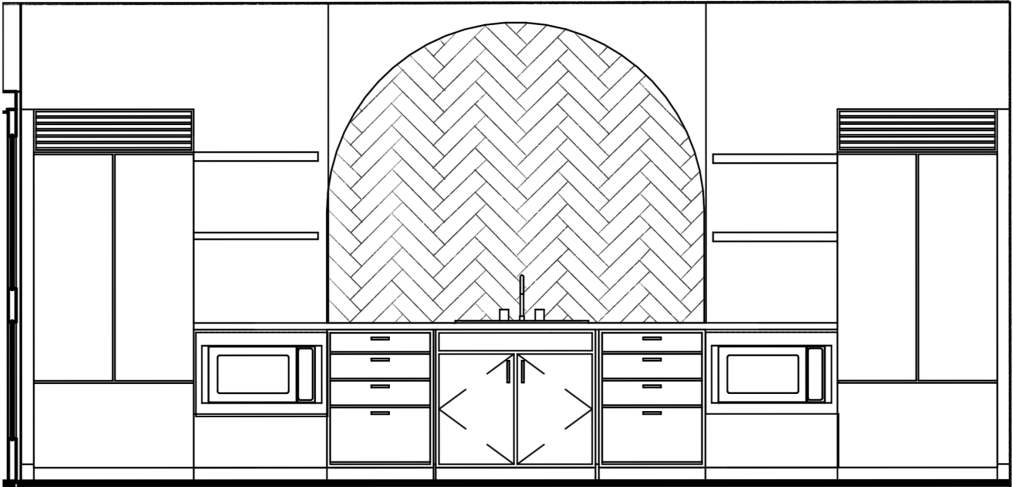
DESIGN TEAM RENDER



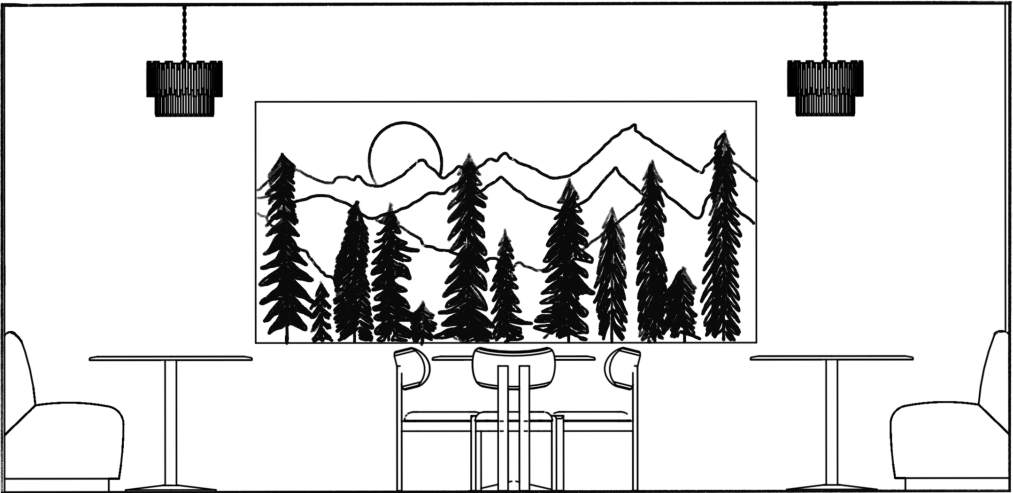
# CHURCH OFFICE BLDG 7TH FLOOR



BREAKROOM MATERIALS



BREAKROOM EAST ELEVATION



BREAKROOM WEST ELEVATION



# CHURCH OFFICE BLDG 7TH FLOOR

---



BREAKROOM WEST RENDER



BREAKROOM EAST RENDER