

CANDICE MARSH



Design Philosophy

I CREATE CLEAN, FUNCTIONAL SPACES THAT HELP PEOPLE FEEL THEIR BEST. ROOTED IN THE BELIEF THAT DESIGN SHOULD IMPROVE DAILY LIFE, MY WORK IS INSPIRED BY ART, NATURE, AND THE PEOPLE I DESIGN FOR. I AIM TO BRING EASE, JOY, AND STABILITY INTO EVERYDAY ENVIRONMENTS THROUGH THOUGHTFUL PROBLEM-SOLVING AND PURPOSEFUL DESIGN.

Vision

MY VISION IS TO DESIGN SPACES THAT SUPPORT THE \-BEING, HEALTH, AND HAPPINESS OF THOSE WHO INHABIT THEM. I BELIEVE THAT THOUGHTFUL, HUMAN-CENTERED INTERIORS CAN FOSTER CLARITY, COMFORT, AND CONNECTION IN EVERYDAY LIFE. THROUGH A COMMITMENT TO SUSTAINABILITY, ACCESSIBILITY, AND INNOVATIVE DESIGN SOLUTIONS, I AIM TO CREATE ENVIRONMENTS THAT ARE NOT ONLY BEAUTIFUL AND FUNCTIONAL BUT ALSO INCLUSIVE AND RESPONSIBLE—SPACES THAT TRULY ENHANCE HOW PEOPLE LIVE, FEEL, AND THRIVE.

Skills

SPACE PLANNING	AUTOCAD
COLOR THEORY	REVIT
ADOBE CREATIVE SUITE	RENDERING
DRAFTING	ADA AND CODES
SKETCHBOOK PRO	ENSCAPE

Education

Ensign College : 2023-2025
ASSOCIATE IN INTERIOR DESIGN

BYU-Idaho 2020-2025
BACHELOR OF GENERAL STUDIES

GLASS & GROUND

Project Objectives

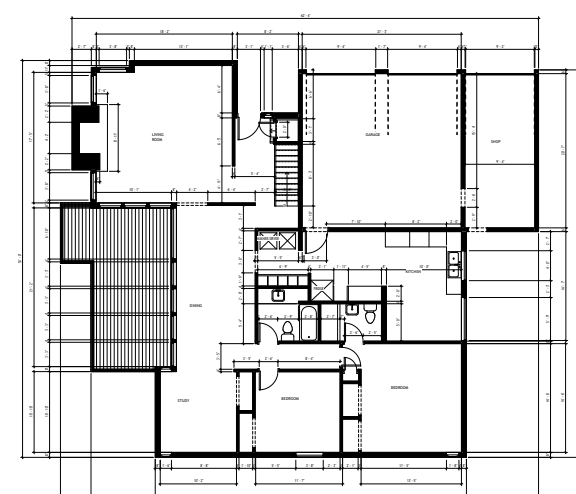
THE GOAL OF THIS PROJECT IS TO RENOVATE A SINGLE-FAMILY HOME INTO A PROFITABLE, MARKET-READY PROPERTY. THE RENOVATION WILL PRESERVE THE HOME'S MID-CENTURY ARCHITECTURAL ROOTS WHILE MODERNIZING IT FOR TODAY'S BUYER, ALL WITHOUT ALTERING CEILING HEIGHTS OR MAKING MAJOR EXTERIOR ADDITIONS.

THE DESIGN CONCEPT, GLASS AND GROUND, CAPTURES THE DUALITY OF THE VISION: GLASS REPRESENTS OPENNESS, NATURAL LIGHT, AND A SEAMLESS INDOOR-OUTDOOR CONNECTION. GROUND SPEAKS TO THE FEELING OF WARMTH, SECURITY, AND ROOTEDNESS—ACHIEVED THROUGH ORGANIC MATERIALS, EARTH-TONED PALETTES, AND A SPATIAL FLOW THAT FEELS BALANCED AND ANCHORED.

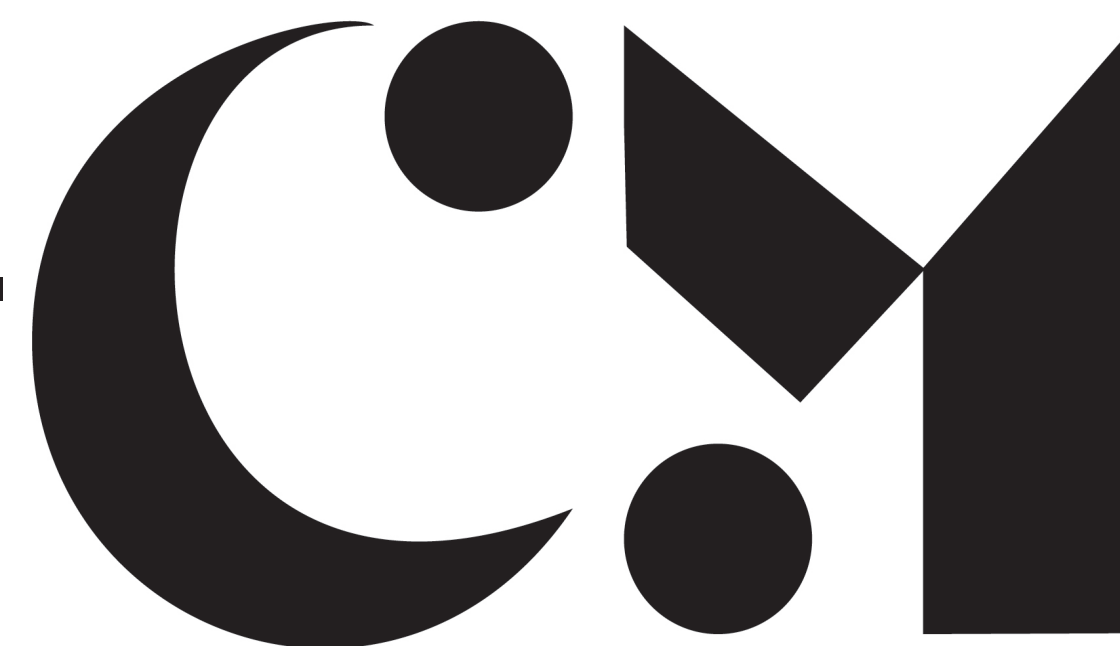
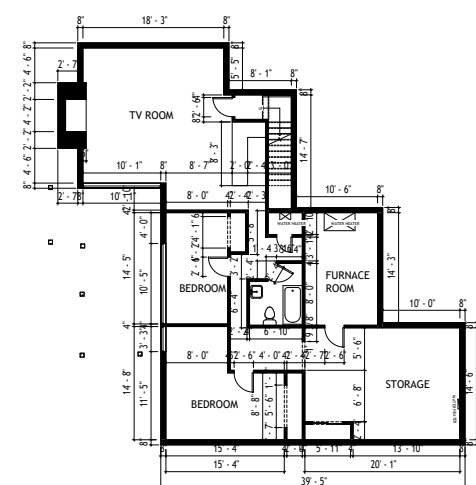
TOGETHER, THE DESIGN WILL DELIVER A HOME THAT FEELS BOTH ELEVATED AND ENDURING, MODERN YET TIMELESS, OPEN YET GROUNDED. POSITIONING IT FOR MAXIMUM MARKET APPEAL AND PROFITABILITY.



EXISTING
MAIN FLOOR
PLAN



EXISTING
BASEMENT
FLOOR PLAN



Project Details

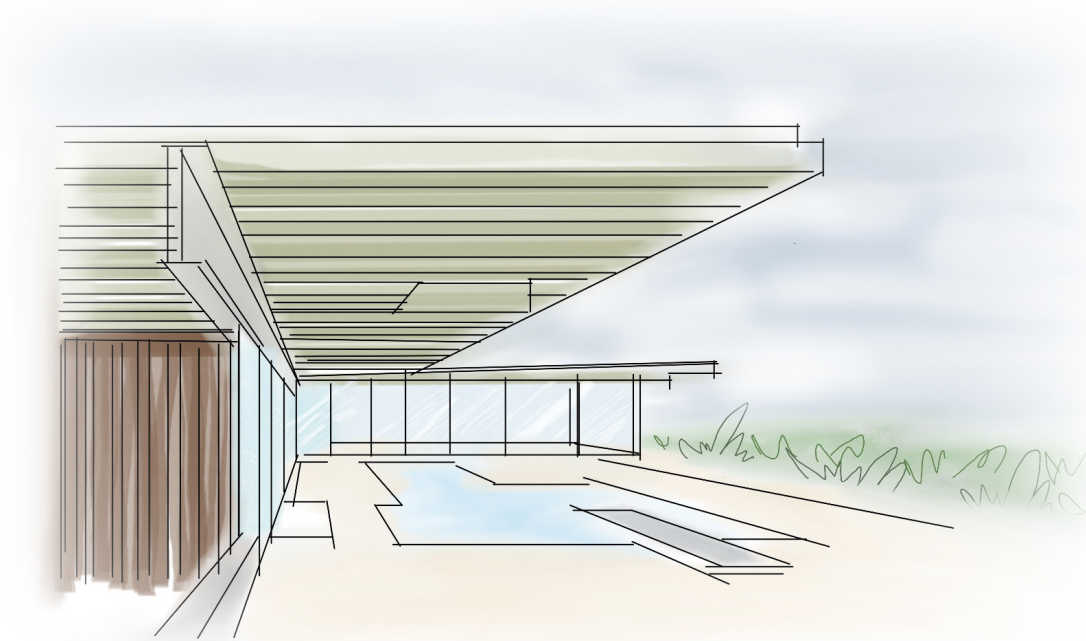
LOCATION
BOUNTIFUL, UT.

SQ. FT.
3,115

YR. BUILT
1964

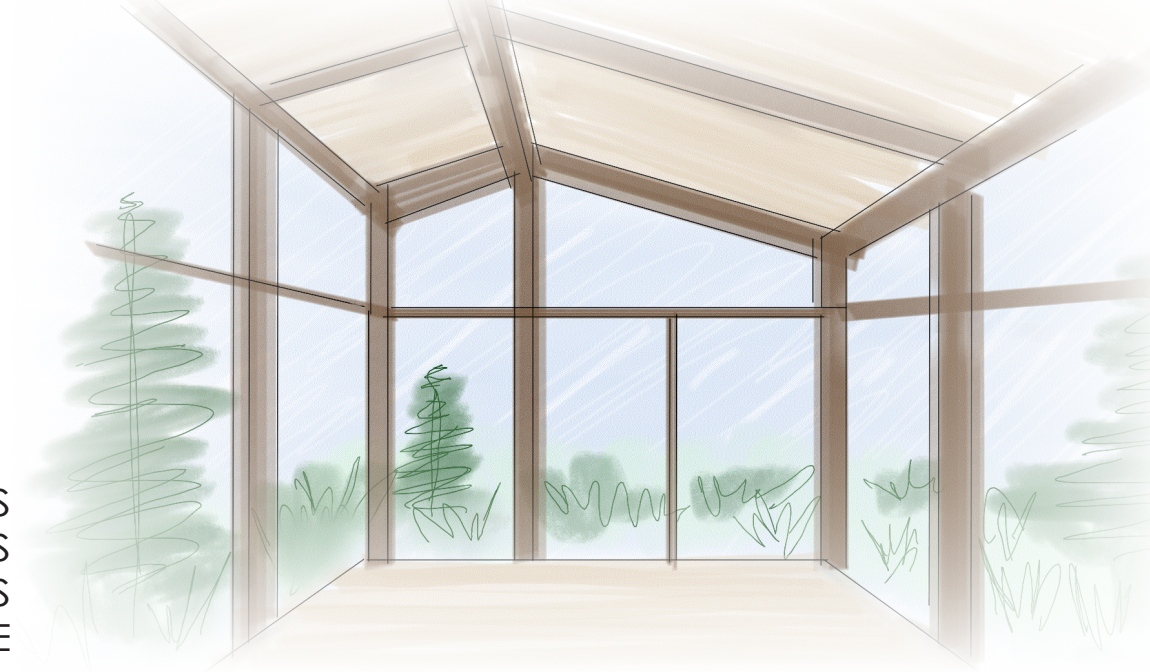
SPACE MIN.
3 BEDROOM
2.5 BATH

Precedent Study



STAHL HOUSE
LOS ANGELES, CA.

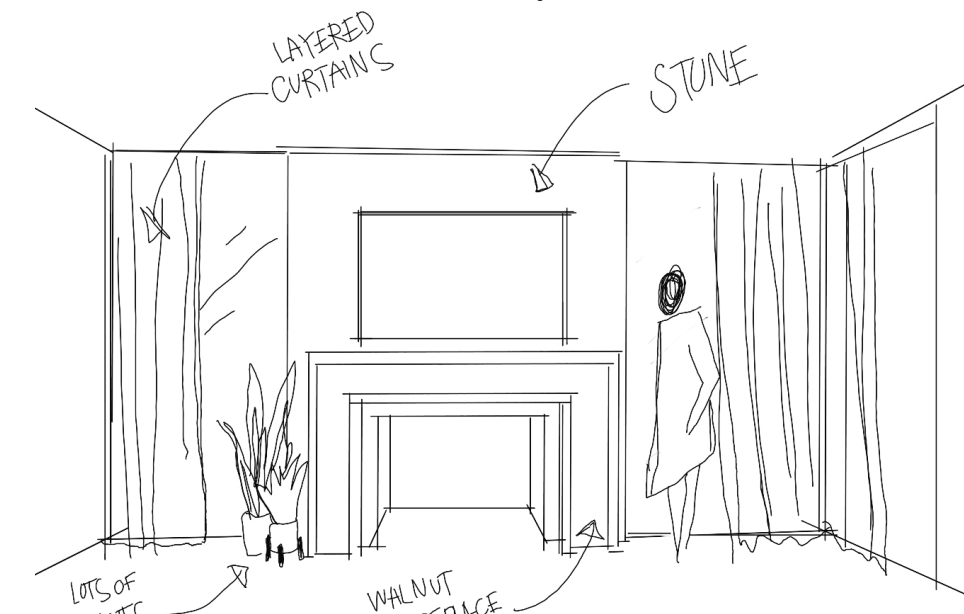
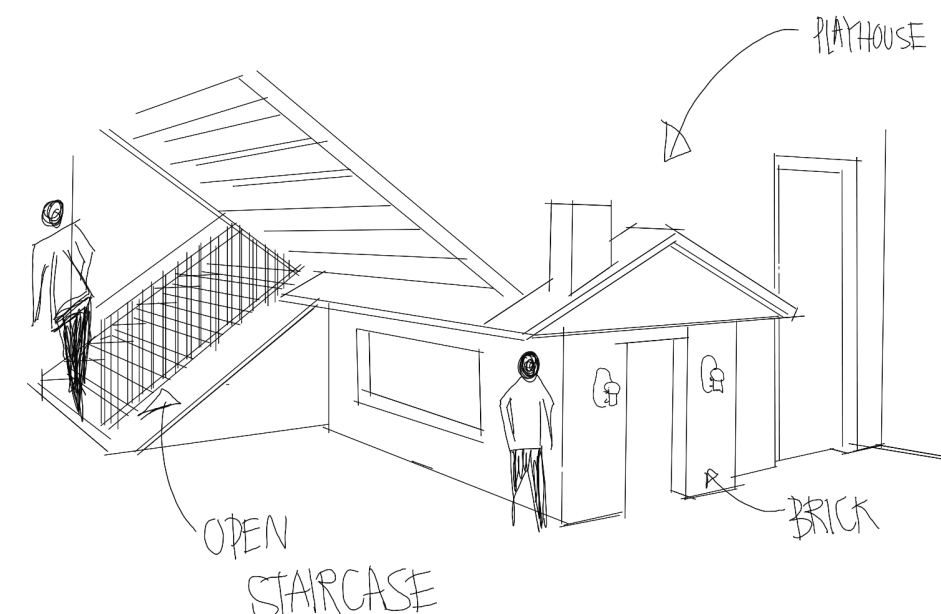
- FLOOR TO CEILING WINDOWS
- OPEN FLOOR PLAN
- INDOOR/OUTDOOR LIVING
- PANORAMIC VIEWS



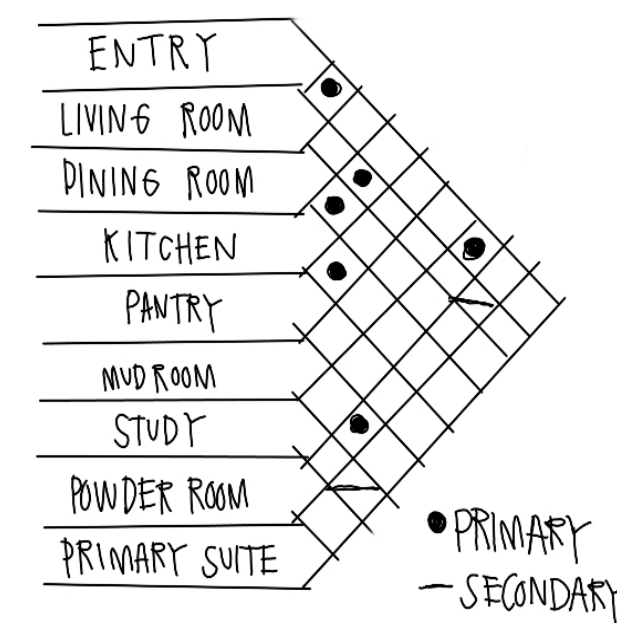
LARK HOUSE
SEATTLE, WA.

- WARM WOOD TONES
- MAXIMIZED VIEWS
- EARTHY FINISHES
- COZY ATMOSPHERE

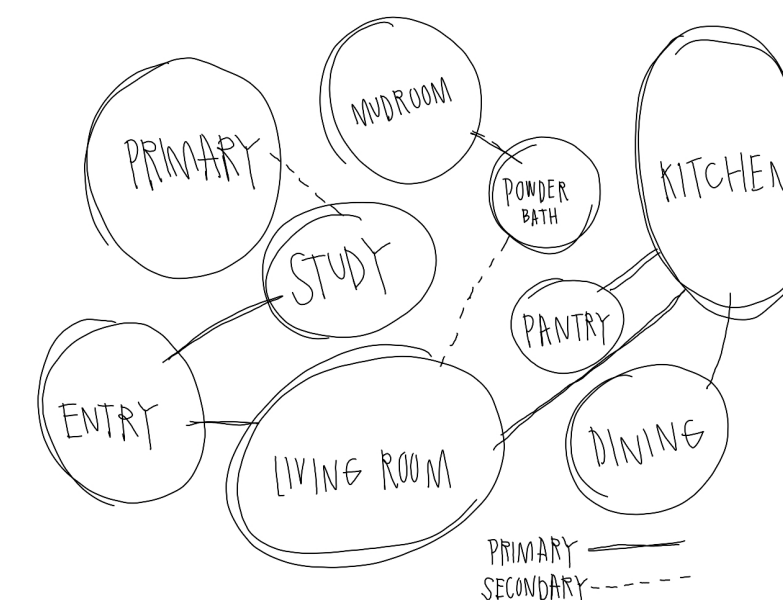
Sketches



Space Planning



ADJACENCY MATRIX



BUBBLE DIAGRAM

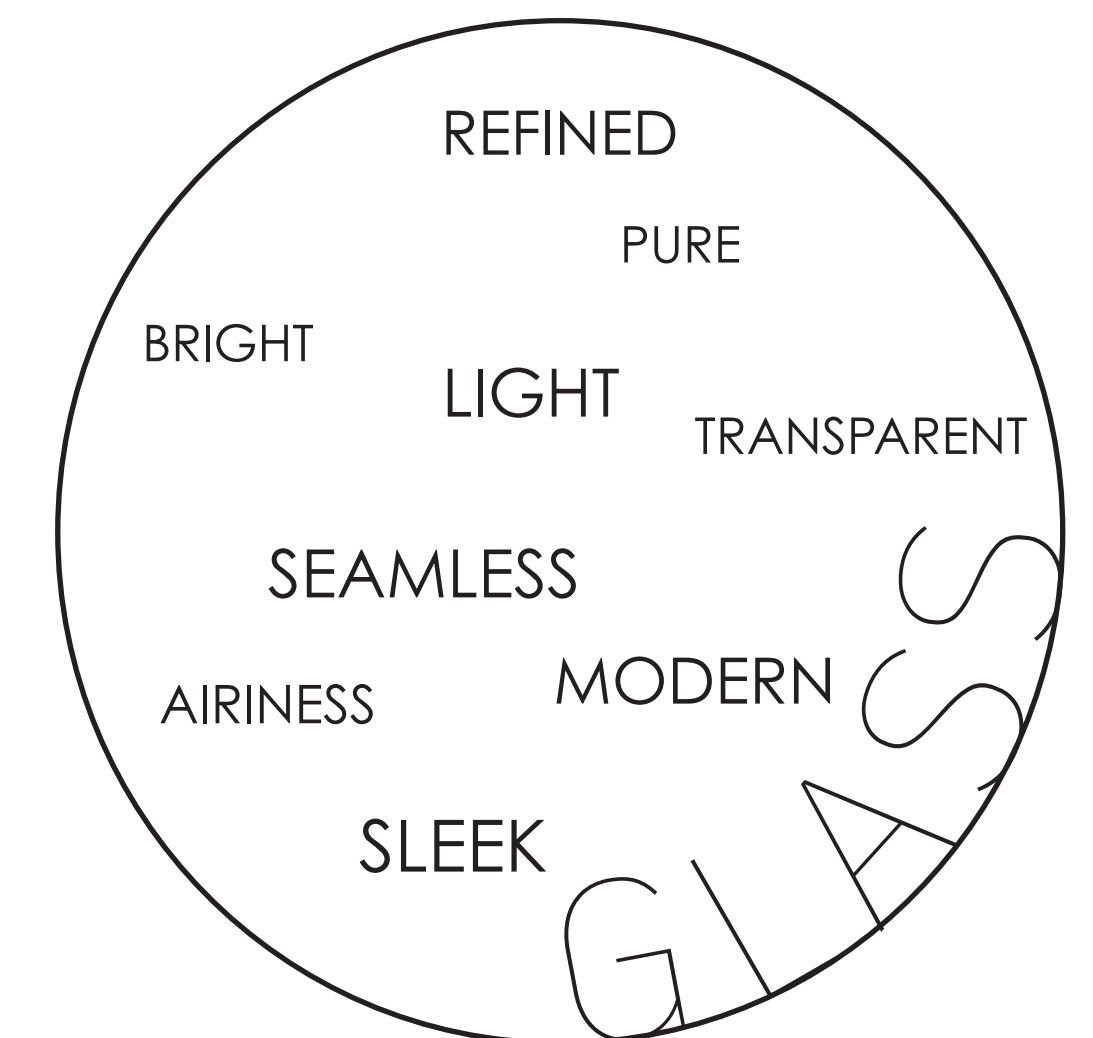
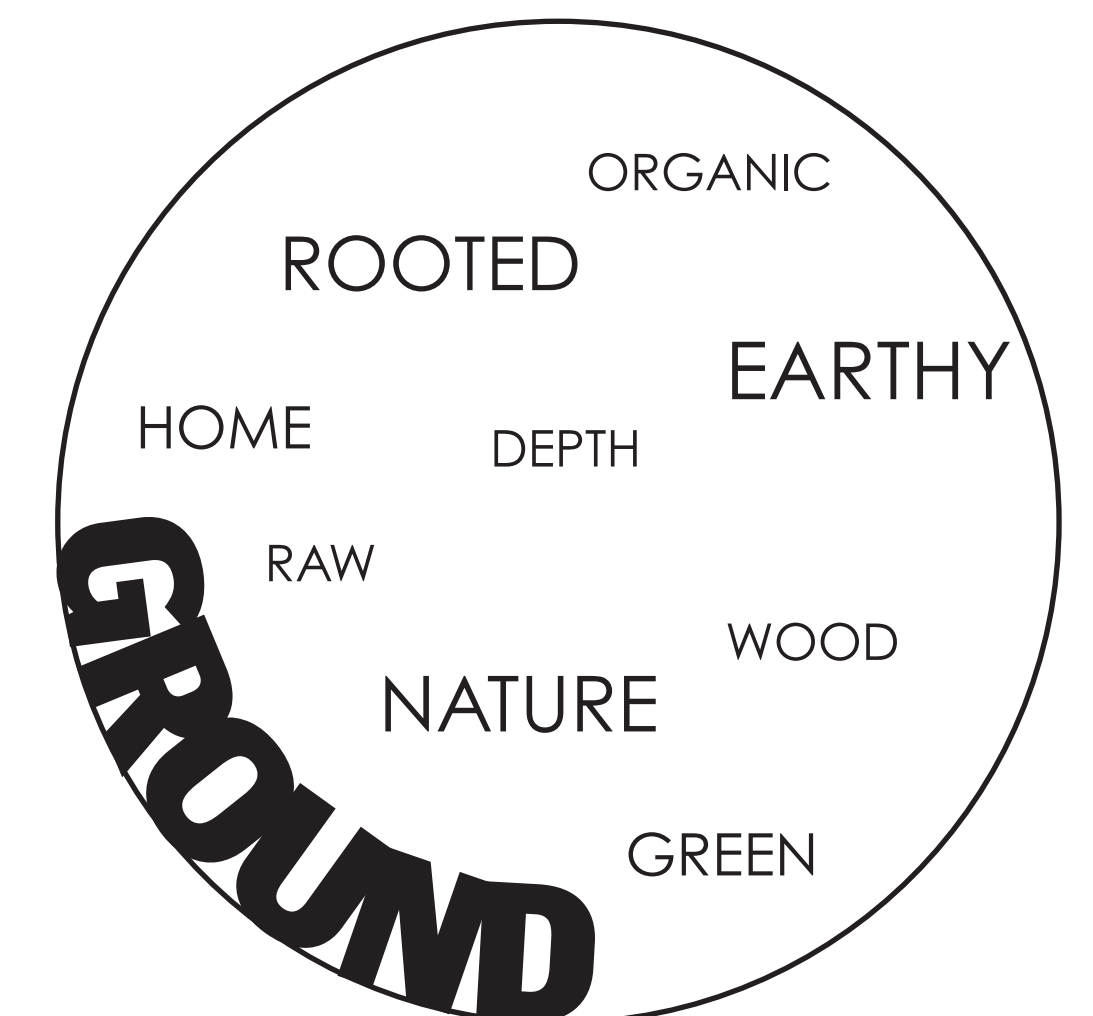


MAIN FLOOR

Design Statement:

Rooted in history, elevated for today—this space blends Mid-Century soul with modern sophistication. Light pours in, nature stays close, and every detail grounds you in comfort and quiet luxury.

Precedent Element Integration



PROJECT: GLASS + GROUND PHASE: PROGRAMMING

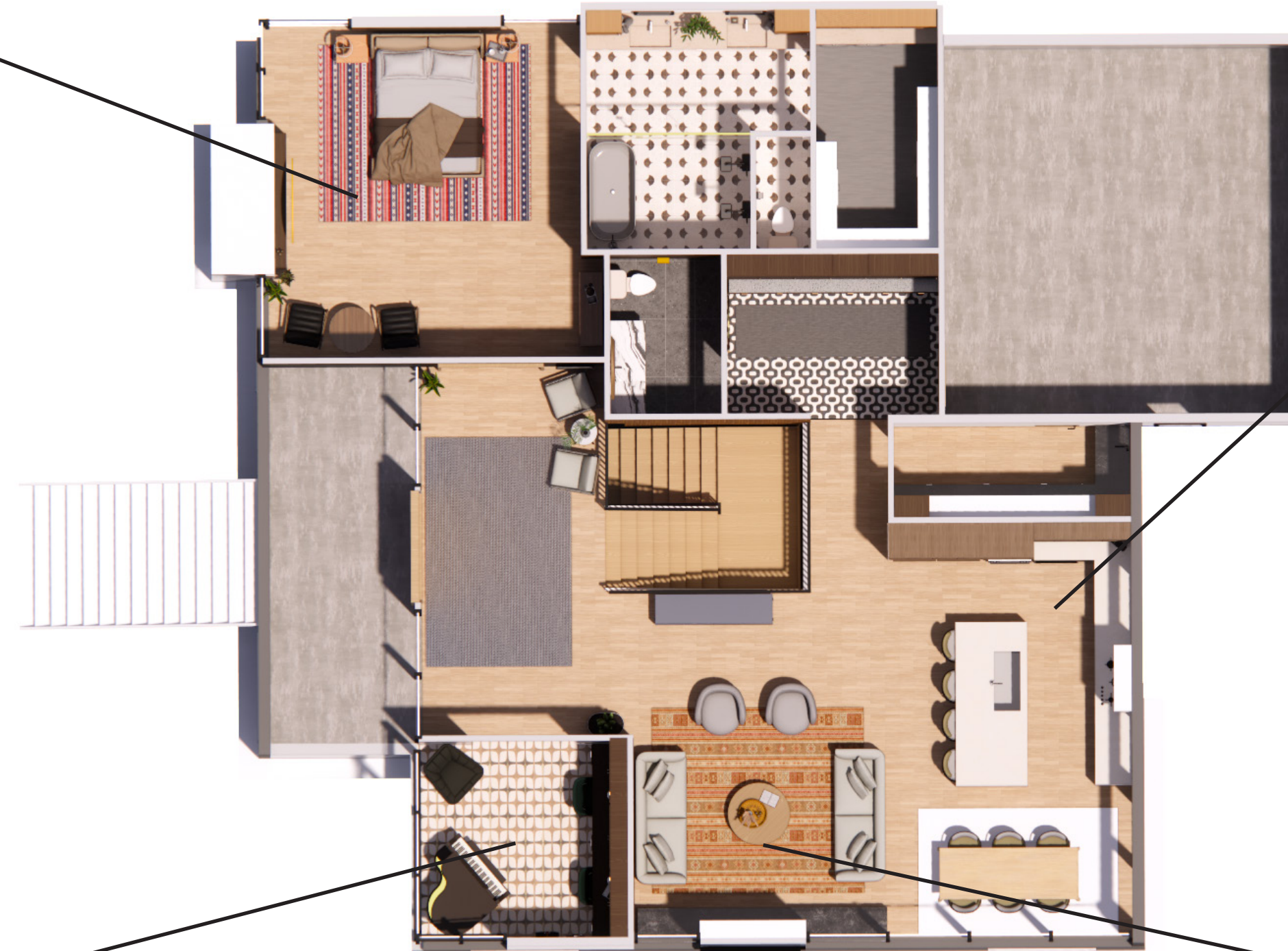
PRIMARY BEDROOM

Window coverings- luxurious velvet to add sophistication and light control.

Bedding- Light and airy material to add softness and comfort.

Bed upholstery- textured and natural weave to add depth.

MAIN FLOOR PLAN *Finishes*



KITCHEN

Flooring- neutral oak bathes the space with a warm and timeless base.

Counters- Smooth and creamy stone to add to the warm and neutral pallet

Cabinets- Walnut slab fronts that modernize a retro classic

LIVING ROOM

Sofa- soft in creamy boucle material is modern but durable.

Accent material- Brushed velvet in a rust gives the room an inviting and warm pop or color

Wood Paneling- blankets the area with a natural finish that brings the outdoors in.

STUDY

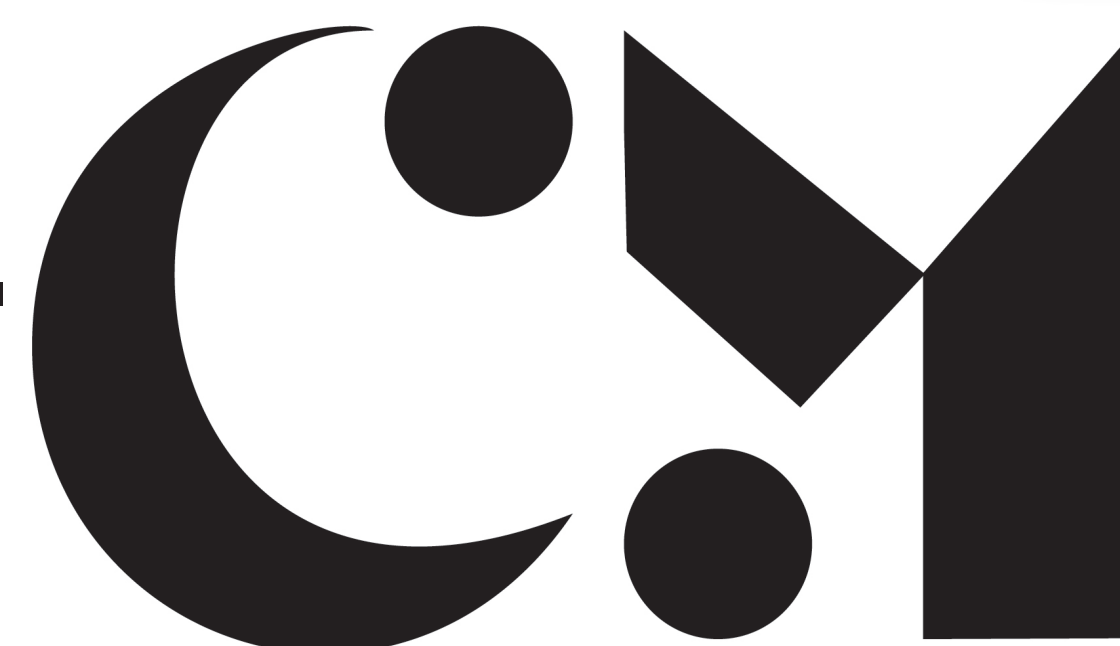
Throw Pillow- soft and fluffy to add a level of warmth and comfort.

Throw Pillow- Lots of texture but cohesive analogous color scheme.

Office Chairs- Brushed velvet to ground the space

Flooring- Custom mosaic floor to pull in mid century motif.

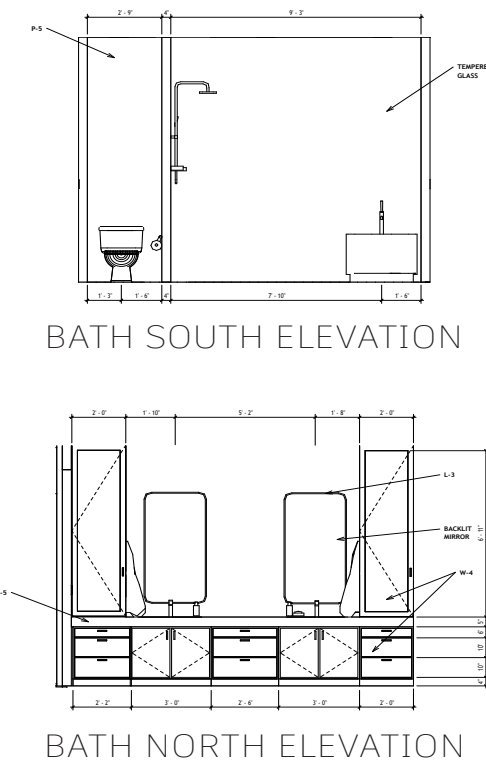
Throw Pillows- create depth and interest will adding contrast in a simple monochromatic way.



PROJECT: GLASS + GROUND

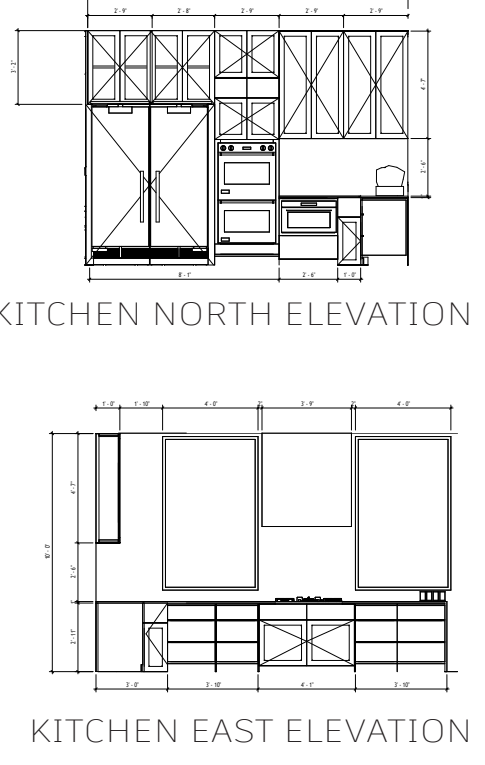
PHASE:

SCHEMATIC+
DESIGN DEVELOPMENT

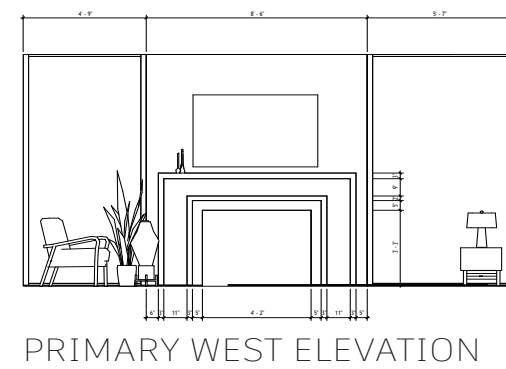


PRIMARY BATHROOM

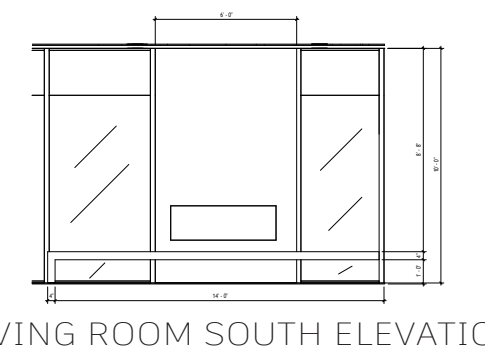
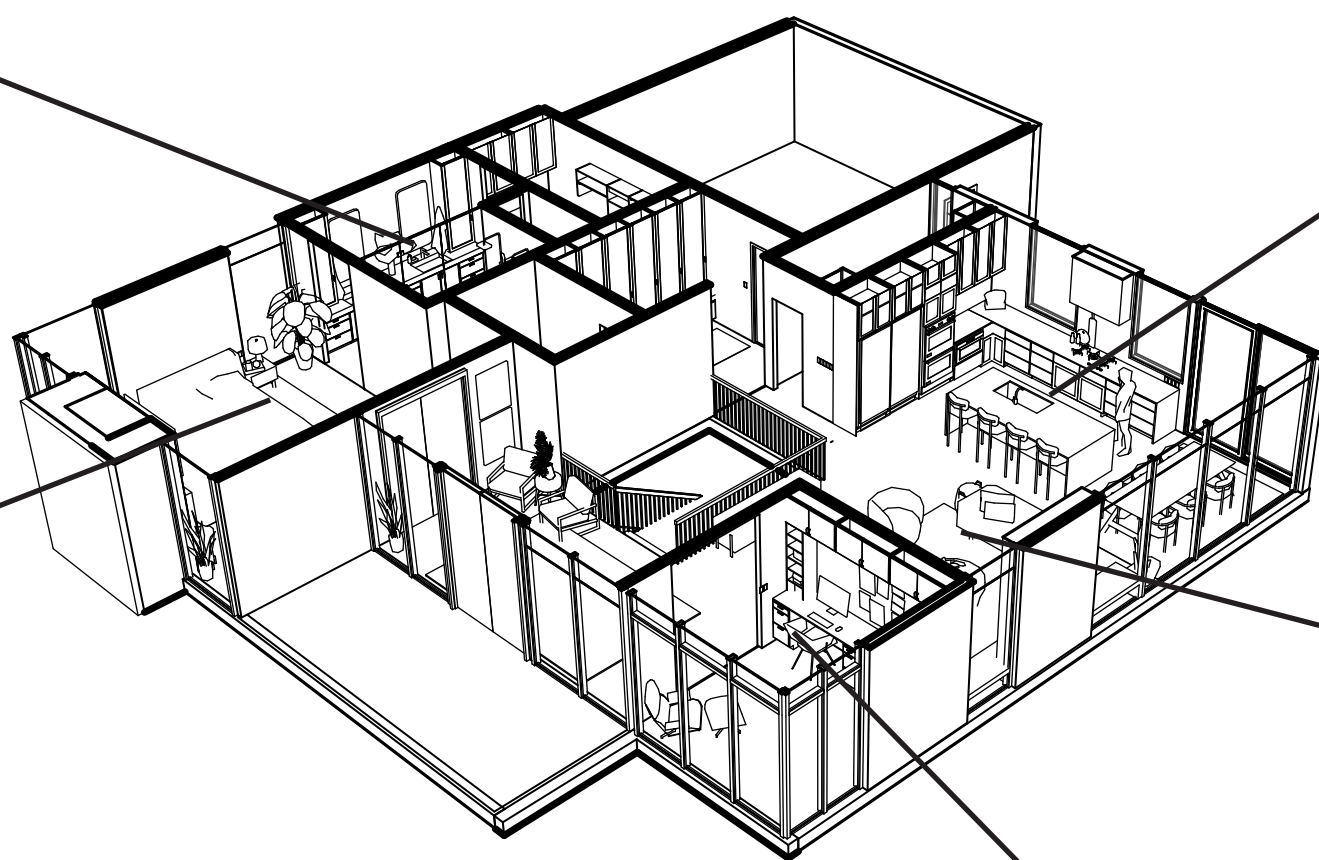
GLASS & GROUND



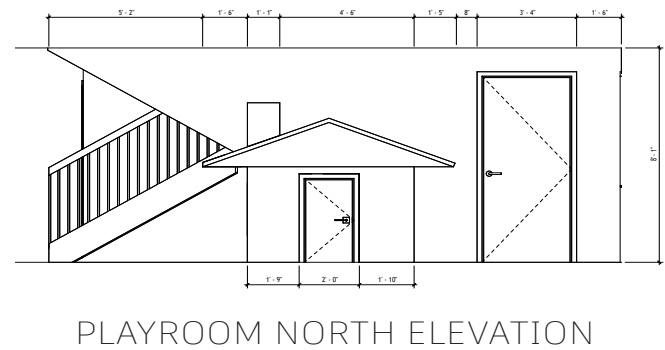
KITCHEN



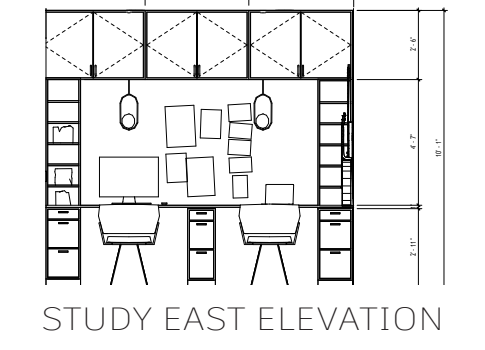
PRIMARY BEDROOM



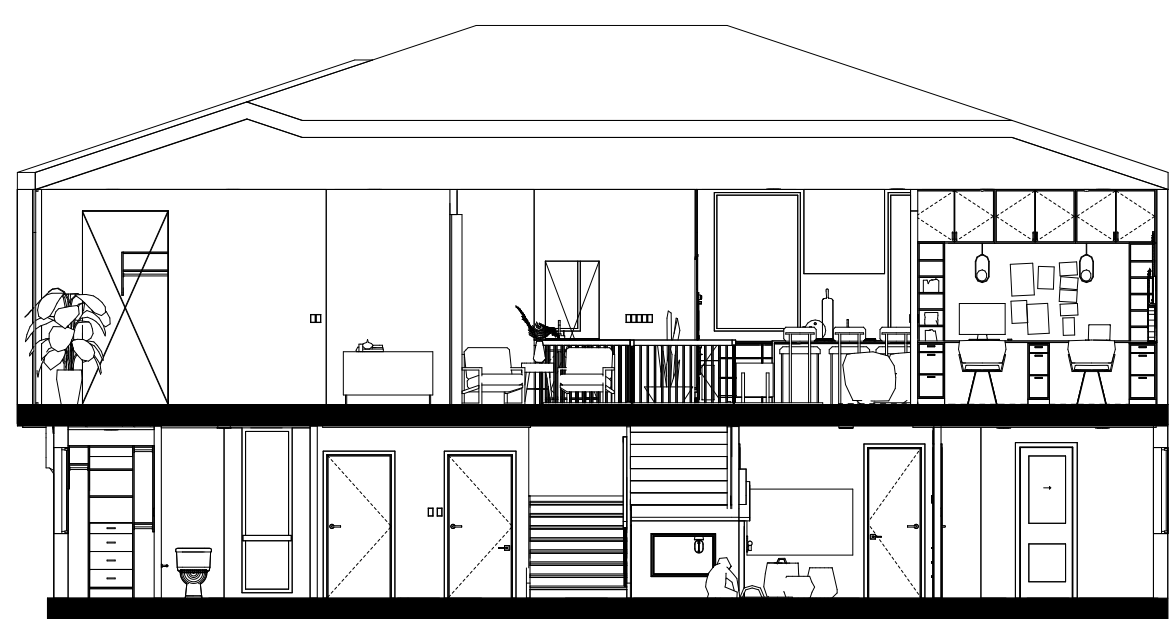
LIVING ROOM



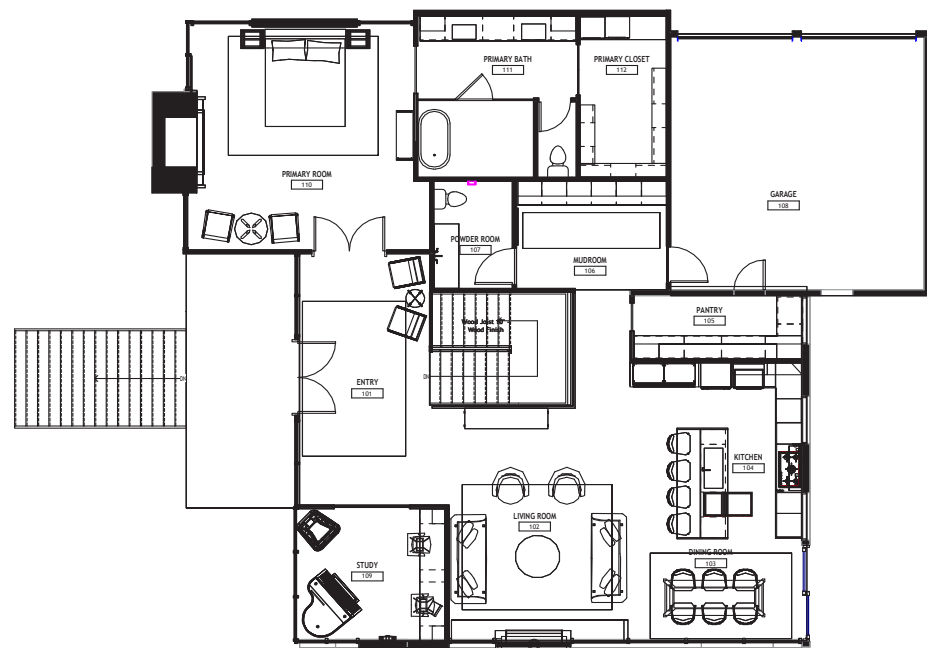
PLAY AREA



STUDY



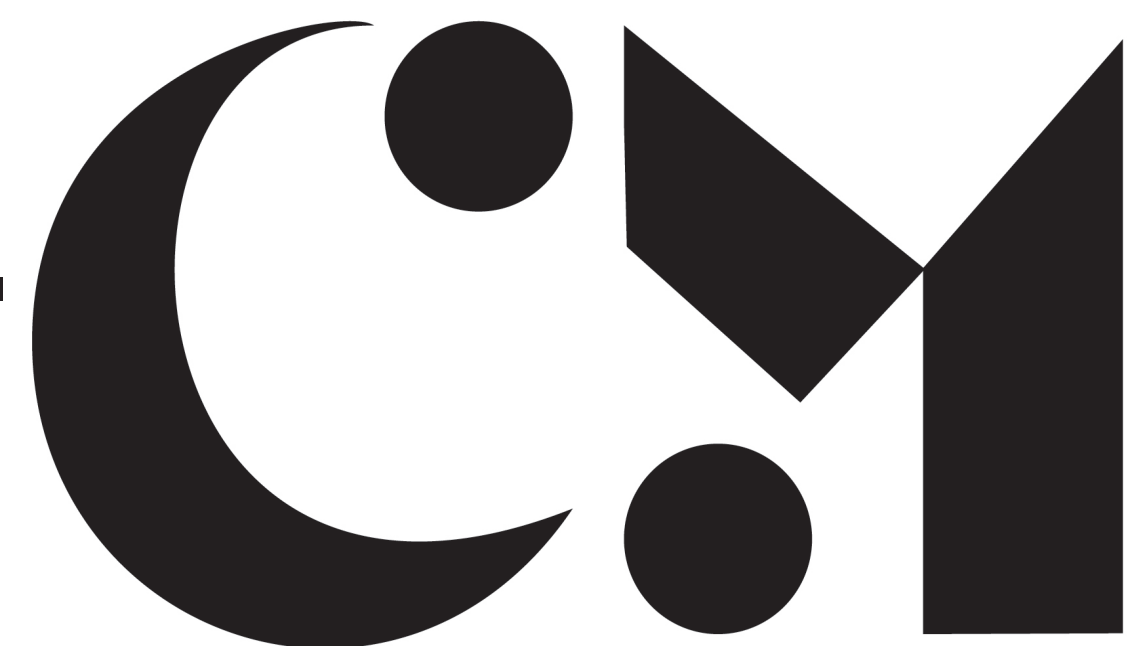
EAST TO WEST BUILDING SECTION



MAIN FLOOR PLAN



BASEMENT FLOOR PLAN



PROJECT: GLASS + GROUND **PHASE:** DESIGN DEVELOPMENT

WELLNESS WORKSPACE

Project Objectives

THE WELLNESS WORKSPACE PROJECT IS A TRANSFORMATION OF AN EXISTING OFFICE FLOOR INTO A VIBRANT, HYBRID WORKING ENVIRONMENT FOR 50 EMPLOYEES. THE DESIGN AIMS TO TURN A DARK, UNDERUTILIZED SPACE INTO A LIGHT-FILLED, INCLUSIVE, AND INSPIRING WORKSPACE THAT SUPPORTS BOTH INDIVIDUAL FOCUS AND TEAM COLLABORATION. THIS PROJECT IS NOT JUST A TENANT IMPROVEMENT; IT'S A RE-IMAGINING OF HOW WORKSPACES CAN SERVE THE MIND, BODY, AND SPIRIT. BY INTEGRATING WELLNESS, COLLABORATION, AND FLEXIBILITY, WELLNESS WORKSPACE IS A BLUEPRINT FOR FUTURE-READY CORPORATE ENVIRONMENTS.

THE INTENT OF THE DESIGN IS TO CRAFT A WELCOMING ENVIRONMENT ROOTED IN WELLNESS PRINCIPLES. THE DESIGN DRAWS FROM THE WELL BUILDING STANDARDS EMPHASIZING HEALTH, COMFORT, AND PERFORMANCE. KEY DESIGN CONSIDERATIONS AND FEATURES REFLECT:

OPEN, HYBRID LAYOUT:

ZONES TAILORED FOR CONCENTRATION, QUIET WORK, SPONTANEOUS MEETINGS, AND FORMAL COLLABORATION.

NATURAL MATERIAL PALETTE:

WOOD ACCENTS, CALMING COLOR TONES, AND DAYLIGHT-MIRRORING SURFACES.

CREATIVE WORKSPACES:

VARIED SEATING OPTIONS — FROM LOUNGE AREAS TO STANDING DESKS AND HIGH-FOCUS BOOTHS.

WELLNESS-CENTRIC DETAILS:

ERGONOMIC FURNITURE, GREENERY, AND ACCESS TO HYDRATION AND NOURISHMENT AREAS. WELLNESS ROOMS READILY AVAILABLE

SPIRITUAL SENSITIVITY:

SOFT, REVERENT AESTHETIC CUES IN LINE WITH THE BUILDING'S CHURCH FUNCTION.

LIGHT & COMFORT:

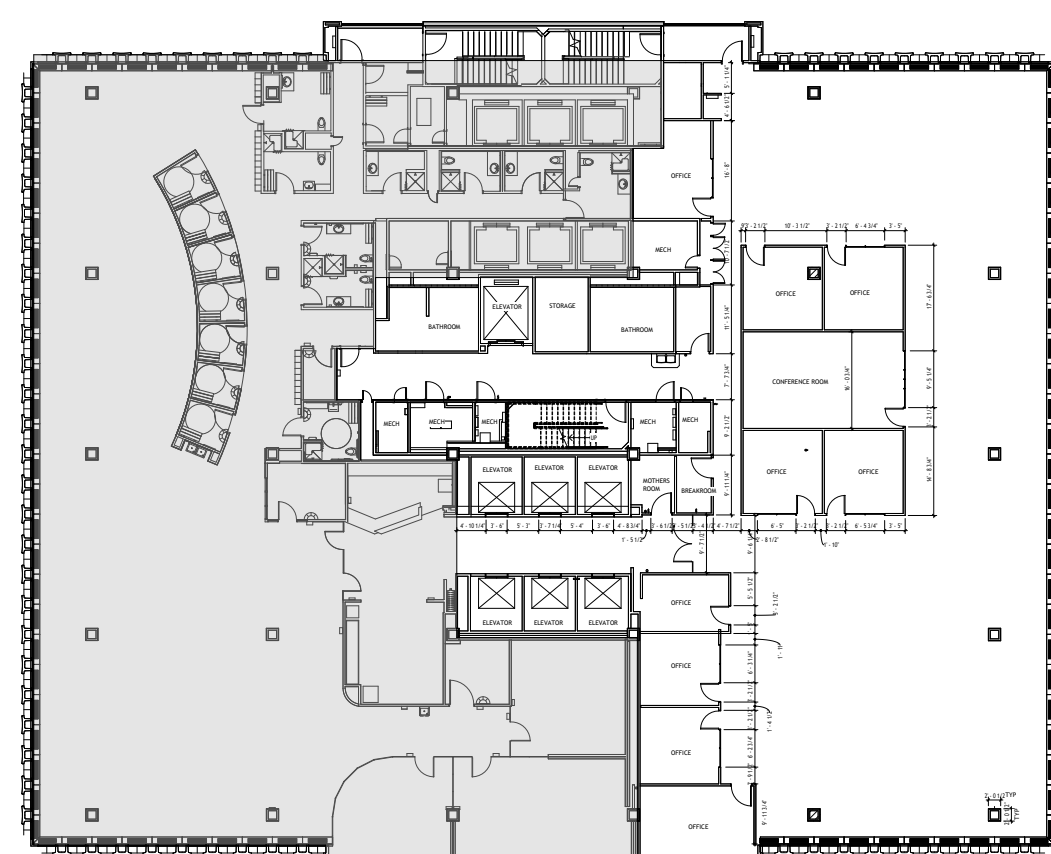
DAYLIGHTING, REDUCED GLARE, AND SOOTHING FINISHES.

MIND & MOVEMENT:

INVITING DESIGN THAT ENCOURAGES WALKING, FLEXIBILITY, AND MENTAL WELLNESS.

MATERIALS & NOURISHMENT:

CONSCIOUS MATERIAL SOURCING AND ACCESS TO HEALTHY SPACES.



EXISTING FLOOR PLAN

Project Details

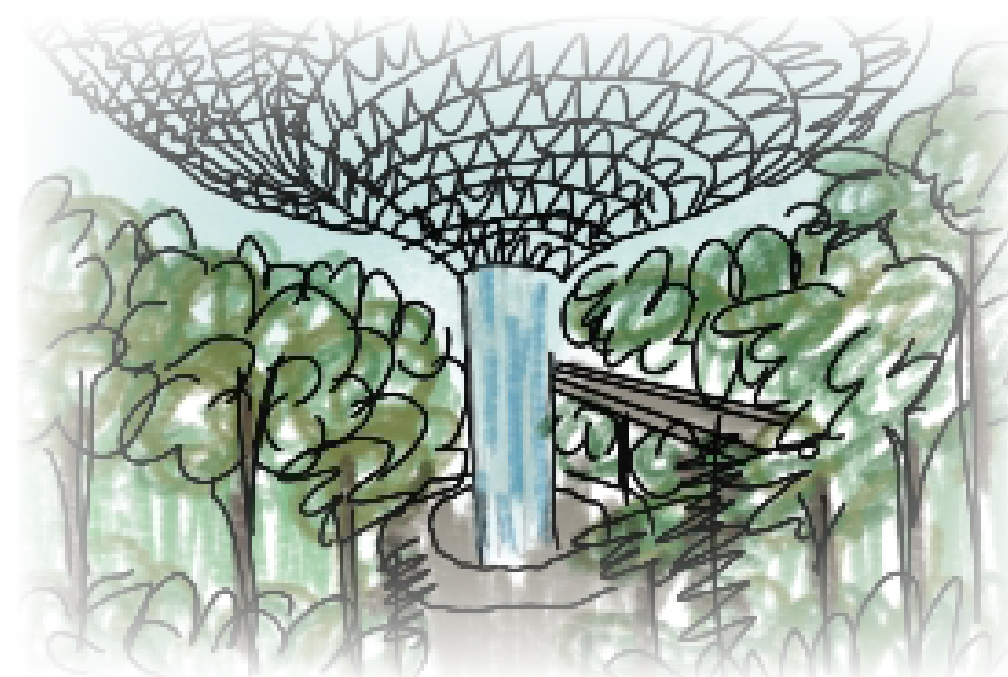
LOCATION
SALT LAKE CITY, UT.

SQ. FT.
9,000

EMPLOYEES
50

SPACE FOR
4 DEPARTMENTS

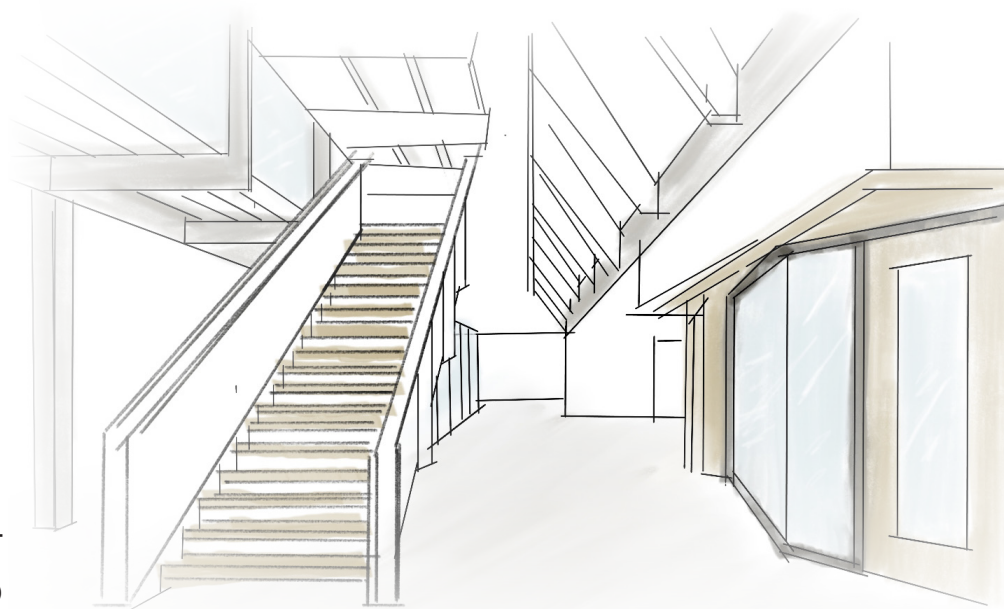
Precedent Study



CHANGI AIRPORT
SINGAPORE

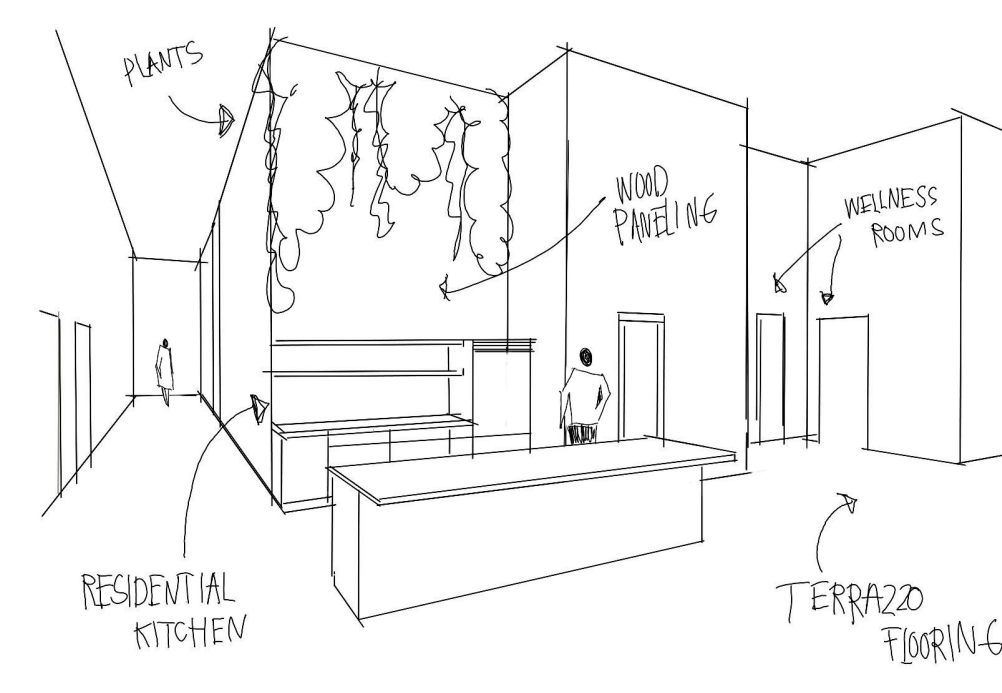
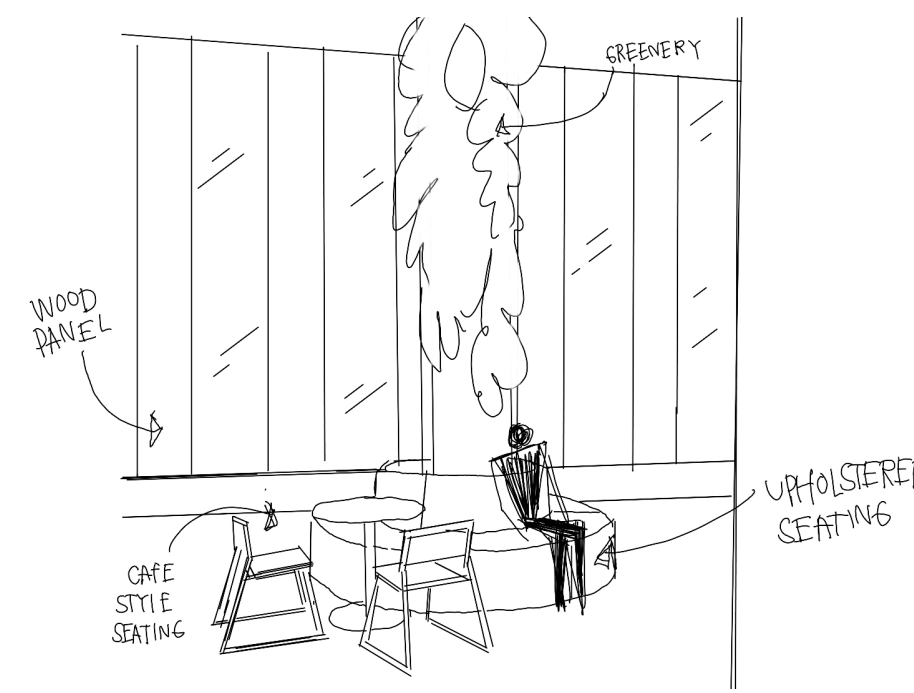
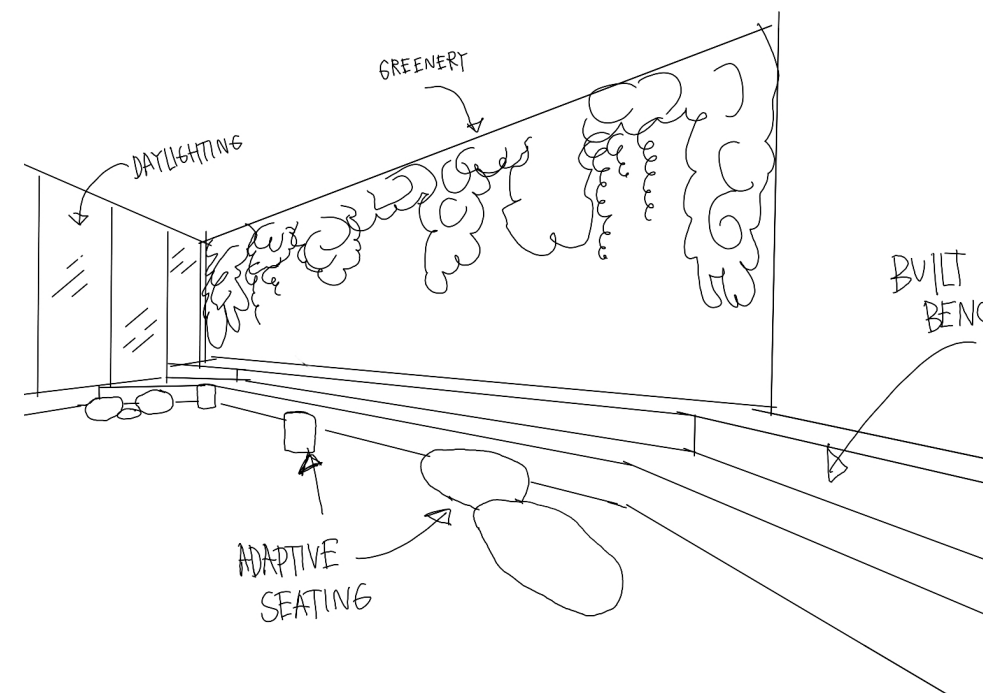
-BIOPHILIC DESIGN
-ECO FRIENDLY FOCUS
-EXPERIENCE BASED
-REST AND WELLNESS ZONES

-OPEN FLOOR PLAN
-AUTOMATED COMFORT
-WELL CERTIFIED
-WATER AND AIR QUALITY

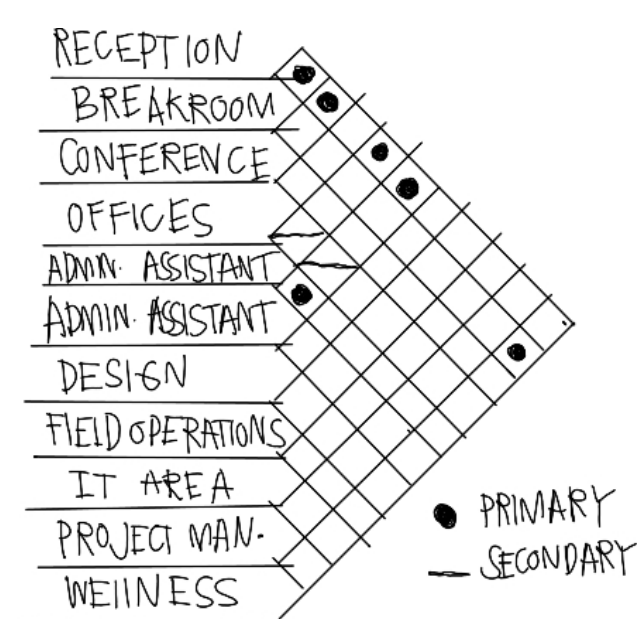


MHTN ARCHITECTS
SALT LAKE CITY, UT.

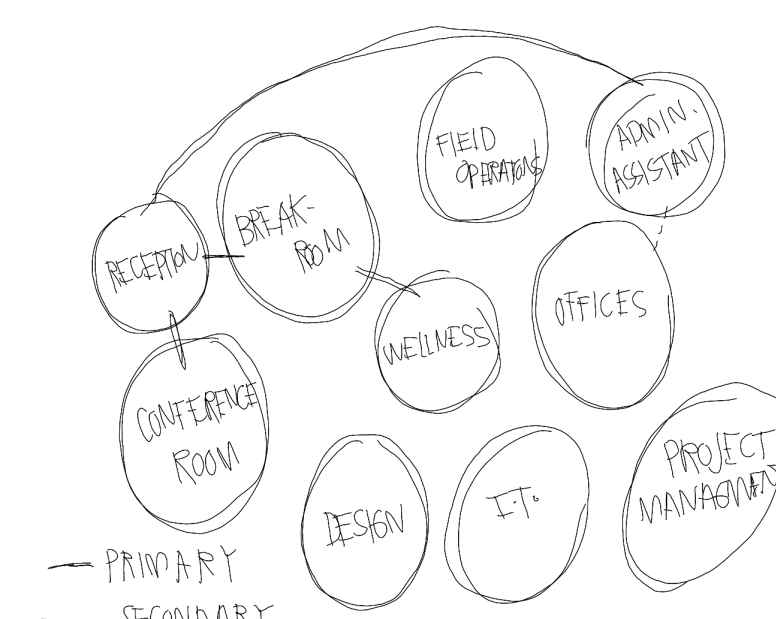
Sketches



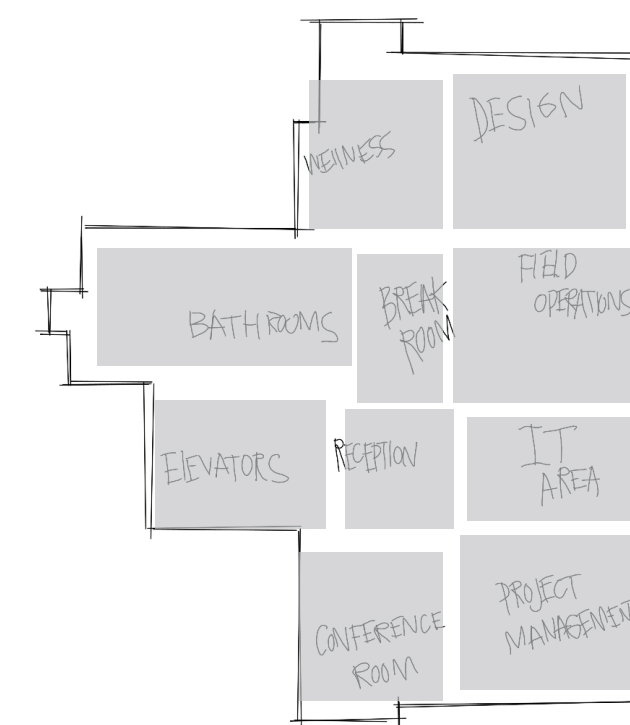
Space Planning



ADJACENCY MATRIX



BUBBLE DIAGRAM



BLOCK DIAGRAM

Design Statement:

With a focus on wellness and flexibility, the design features collaborative zones, natural textures, and visual openness to transform the office into a supportive, human-centered space. Each element—from lighting to layout—is chosen to align with the WELL Standards and foster a healthier daily experience for all stakeholders.

WELL PRINCIPLE INTEGRATION



AIR

GOAL: SUPPORT CLEAN INDOOR AIR AND OCCUPANT RESPIRATORY HEALTH.

DESIGN FEATURES:

- ENHANCED VENTILATION AND AIRFLOW
- LOW-VOC PAINTS AND FINISHES
- INDOOR PLANTS FOR AIR PURIFICATION
- TOP OF THE LINE AIR PURIFICATION SYSTEM



WATER

GOAL: PROMOTE PROPER HYDRATION AND HAND WASHING THROUGH EASY ACCESS TO CLEAN DRINKING WATER.

DESIGN FEATURES:

- WATER IS PURIFIED AND TESTED REGULARLY
- HAND WASHING PROMOTED THROUGH THE USE OF HIGH END PRODUCTS.



NOURISHMENT

GOAL: ENCOURAGE HEALTHY EATING HABITS.

DESIGN FEATURES:

- DEDICATED AREA FOR HEALTHY SNACKS OR MEALS
- ACCESS TO REFRIGERATION AND FOOD PREP SURFACES
- FRESH GROWN HERBS AND VEGGIES ON SITE



LIGHT

GOAL: ENHANCE PRODUCTIVITY, SUPPORT GOOD SLEEP QUALITY AND PROVIDE APPROPRIATE VISUAL ACUITY.

DESIGN FEATURES:

- ADJUSTABLE LIGHTING IN EACH AREA FOR BRIGHTNESS AND COLOR
- AVOID GLARE WITH AUTOMATED SHADES
- DAYLIGHTING THROUGHOUT



FITNESS

GOAL: ENCOURAGE PHYSICAL ACTIVITY THROUGHOUT THE DAY.

DESIGN FEATURES:

- WIDE CIRCULATION PATHS FOR WALKING
- STANDING DESKS AND MOVEMENT-FRIENDLY FURNITURE
- LOUNGE ZONES TO PROMOTE WALKING BREAKS AND INFORMAL MOBILITY

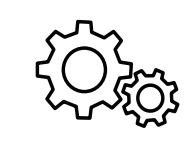


COMFORT

GOAL: ENSURE THERMAL, ACOUSTIC, AND ERGONOMIC COMFORT.

DESIGN FEATURES:

- ERGONOMIC FURNITURE FOR LONG-TERM USE
- ZONED AREAS WITH SOUND-ABSORBING MATERIALS
- ADJUSTABLE LIGHTING AND TEMPERATURE ZONES



MIND

GOAL: SUPPORT MENTAL WELL-BEING AND COGNITIVE PERFORMANCE.

DESIGN FEATURES:

- CALMING, NATURE-INSPIRED DESIGN AND COLORS
- BIOPHILIC ELEMENTS (PLANTS, WOOD TEXTURES, NATURAL MATERIALS)
- VARIETY OF WORKSPACES: QUIET ZONES, FOCUS PODS, COLLABORATIVE AREAS

PROJECT: WELLNESS WORKSPACE PHASE: PROGRAMMING

BREAK ROOM

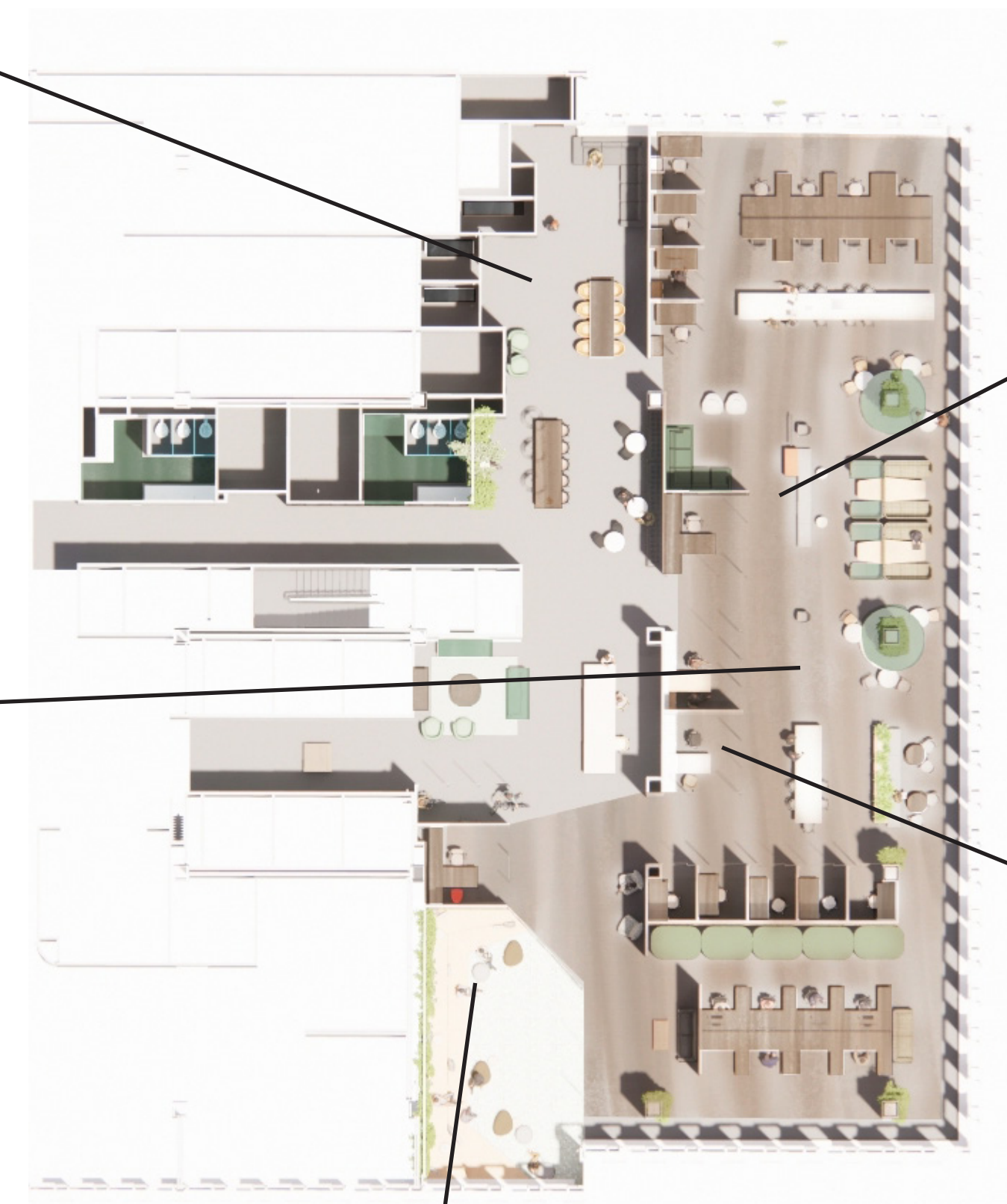
Wood Paneling- Brings in texture and a natural element to ground space.

Material- layering textures creates interest and movement.



Counter Top- Creamy and durable quartz

FLOOR PLAN Finishes



COMMON AREA

Wood tone laminate holds up to UV exposure making the product last longer.

The use of green colored materials mimics biophilic elements and texture.



OFFICES

Wood tone laminate is durable while still adding a natural element.



RECEPTION

Terrazzo Flooring- Ultra durable and allows for radiant heating

Wall covering- fractle pattern is soothing to the brain.

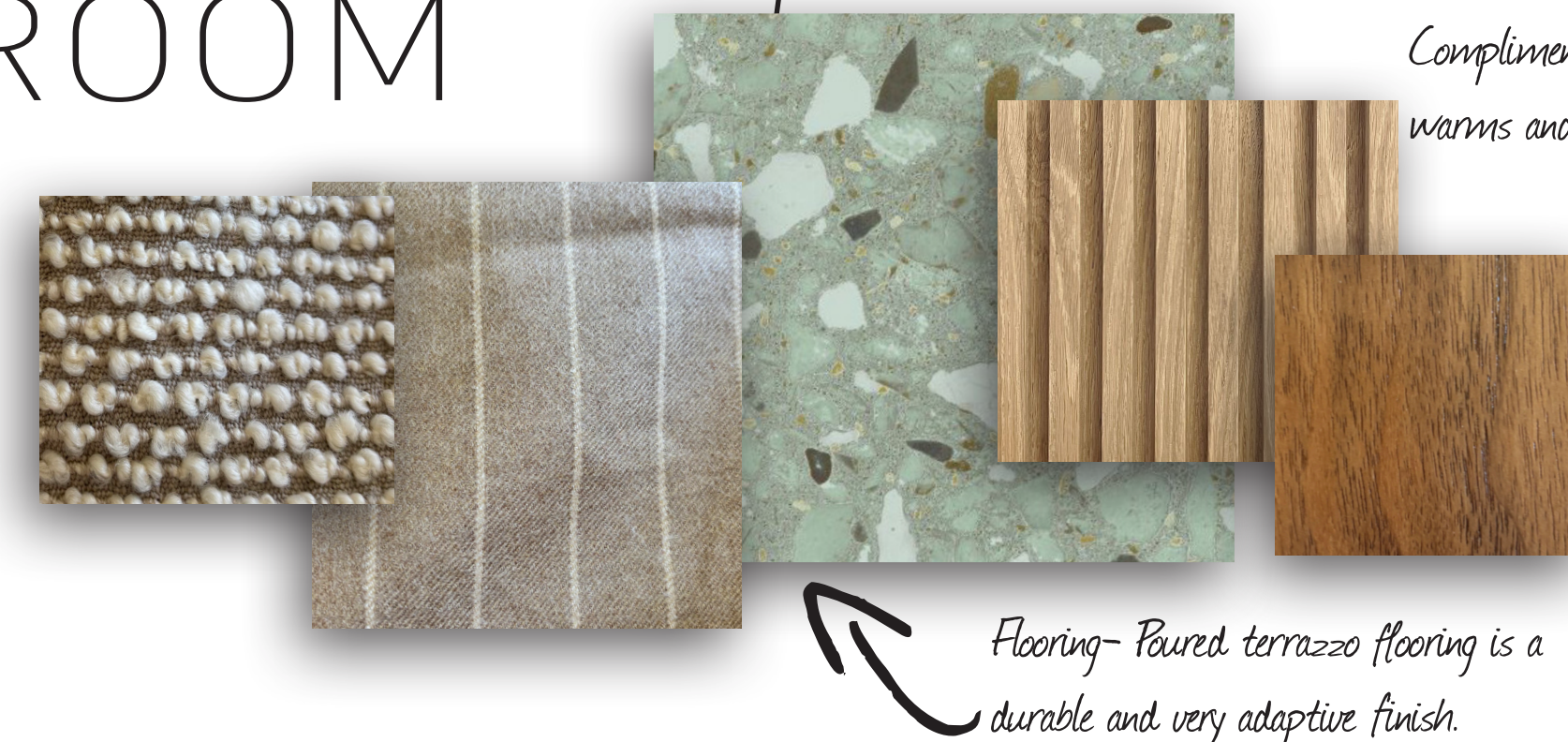


Walnut wood accents

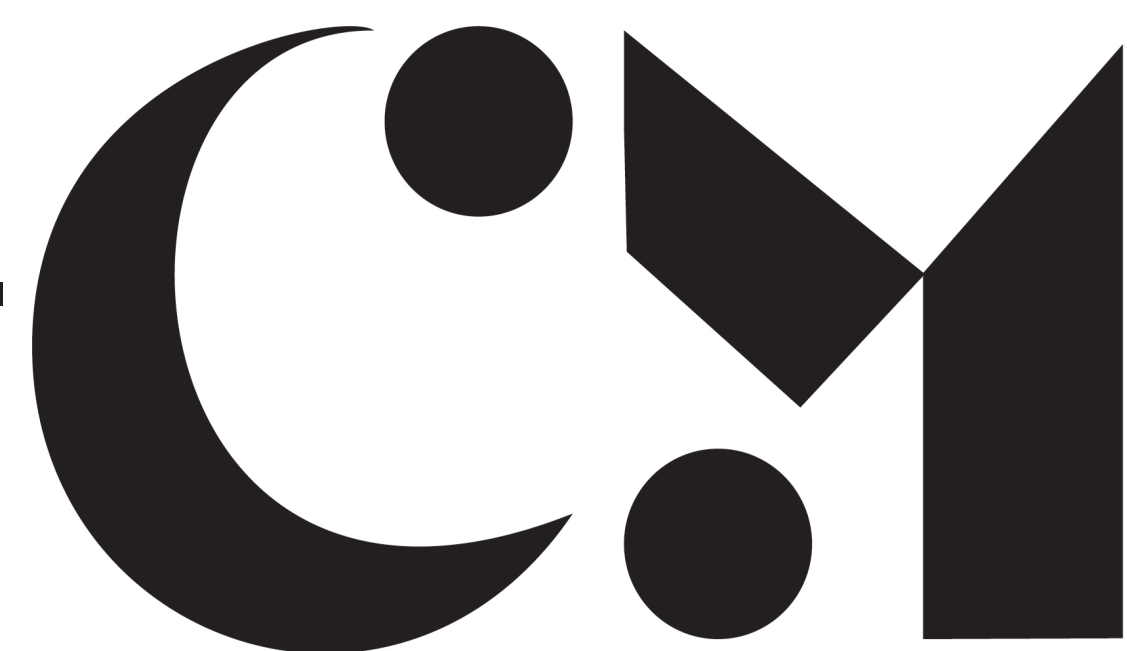
CONFERENCE ROOM

Materials that are textures and cozy create a homey feel.

Complimentary wood tones add extra warmth and a relaxing vibe.






Flooring- Paired terrazzo flooring is a durable and very adaptive finish.





PROJECT: WELLNESS WORKSPACE **PHASE:** SCHEMATIC+
DESIGN DEVELOPMENT

WELLNESS WORKSPACE

-  **WATER**
ULTRA FILTERED WATER
WATER TESTING
-  **NOURISHMENT**
AREA TO MAKE MEALS
ACCESS TO HEALTHY OPTIONS
FRESH FOOD GROWN ON SITE
-  **COMFORT**
RESIDENTIAL FEEL
DIFFERENT LIGHT LEVELS
SOCIAL AREAS

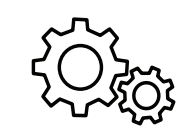




BREAK ROOM

-  **FITNESS**
BIKE STORAGE
AVAILABLE BIKES
EASY ACCESS TO GYM
-  **AIR**
AIR PURIFYING PLANTS
AIR PURIFYING SYSTEM

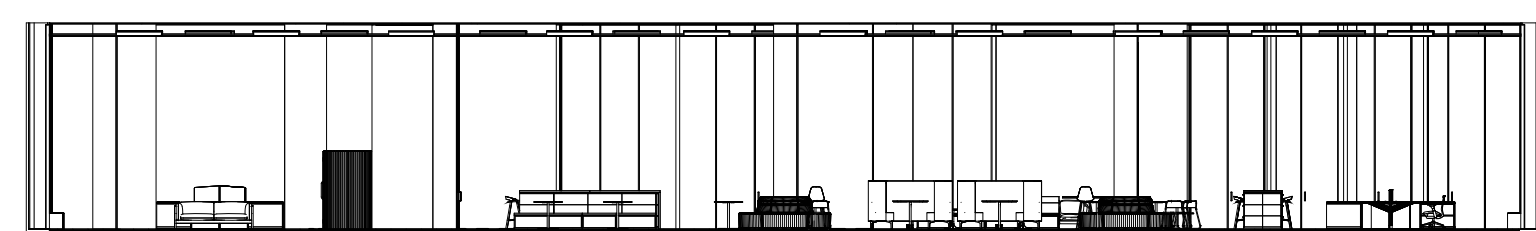


RECEPTION

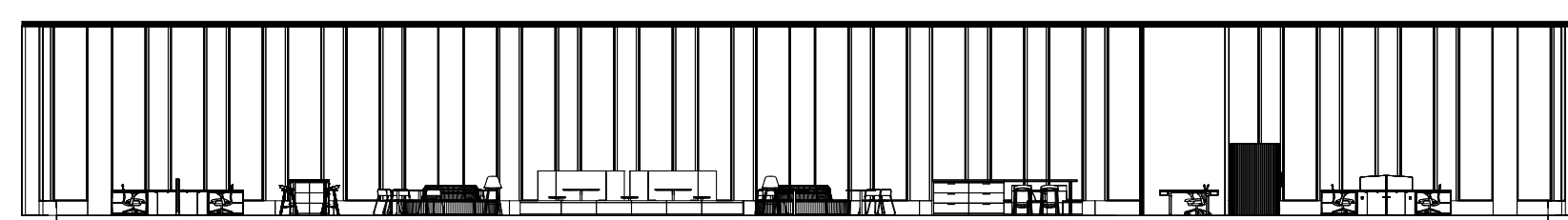
-  **MIND**
SPACE FOR SOCIALIZING
ADAPTIVE SEATING
-  **FITNESS**
SPACE FOR MOVEMENT
FLEX SPACE FOR CLASSES
-  **NOURISHMENT**
EASY ACCESS TO BREAK ROOM
AREAS TO SHARE A MEAL



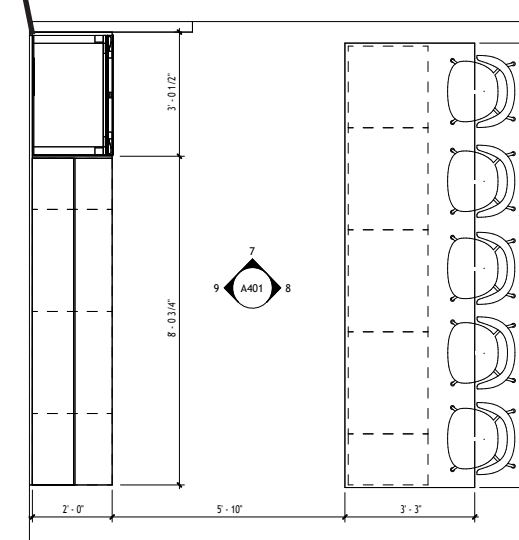
CONFERENCE ROOM



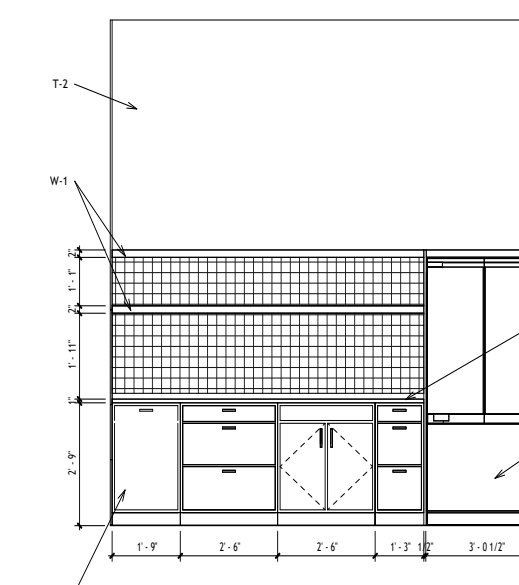
WEST SECTION VIEW



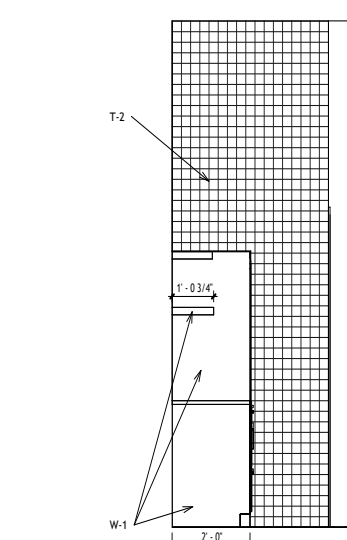
EAST SECTION VIEW



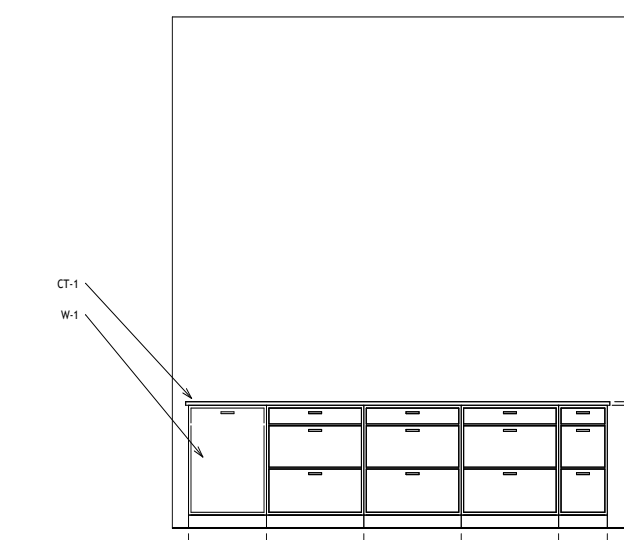
BREAK ROOM ENLARGED



BREAK ROOM WEST ELEVATION





BREAK ROOM NORTH ELEVATION



BREAK ROOM ISLAND ELEVATION



DESIGN

-  **COMFORT**
SIT TO STAND DESKING
VARIETY OF SEATING
ADJUSTABLE THERMOSTATS
FANS AND THROWS AVAILABLE
-  **LIGHT**
NON FLICKER LIGHTING
ACCESS TO DAYLIGHTING



FIELD OPERATIONS

-  **LIGHT**
AUTOMATIC SHADED
ADJUSTABLE LIGHTING
-  **FITNESS**
WALKING PADS AVAILABLE
WIDE WALKING SPACE FOR MOVEMENT



PROJECT MANAGEMENT

-  **MIND**
VARIETY OF AREAS TO WORK
SOOTHING FINISHES
PLANTS THROUGHOUT
-  **AIR**
ACCESS TO FRESH AIR
AIR QUALITY MONITORING



PROJECT: GLASS + GROUND **PHASE:** DESIGN DEVELOPMENT