

# PORT FOLIO

G A B Y B A R K E R





# Table of Contents

## Bountiful House

Take a look at the classically beautiful kitchen in this newly renovated home.

01

## Church Office Building

A new take on a modern, hybrid office space.

02

## NKBA Bathroom

This trendsetting bathroom is not one to miss with today's newest innovations for the bathroom.

03

# Bountiful House



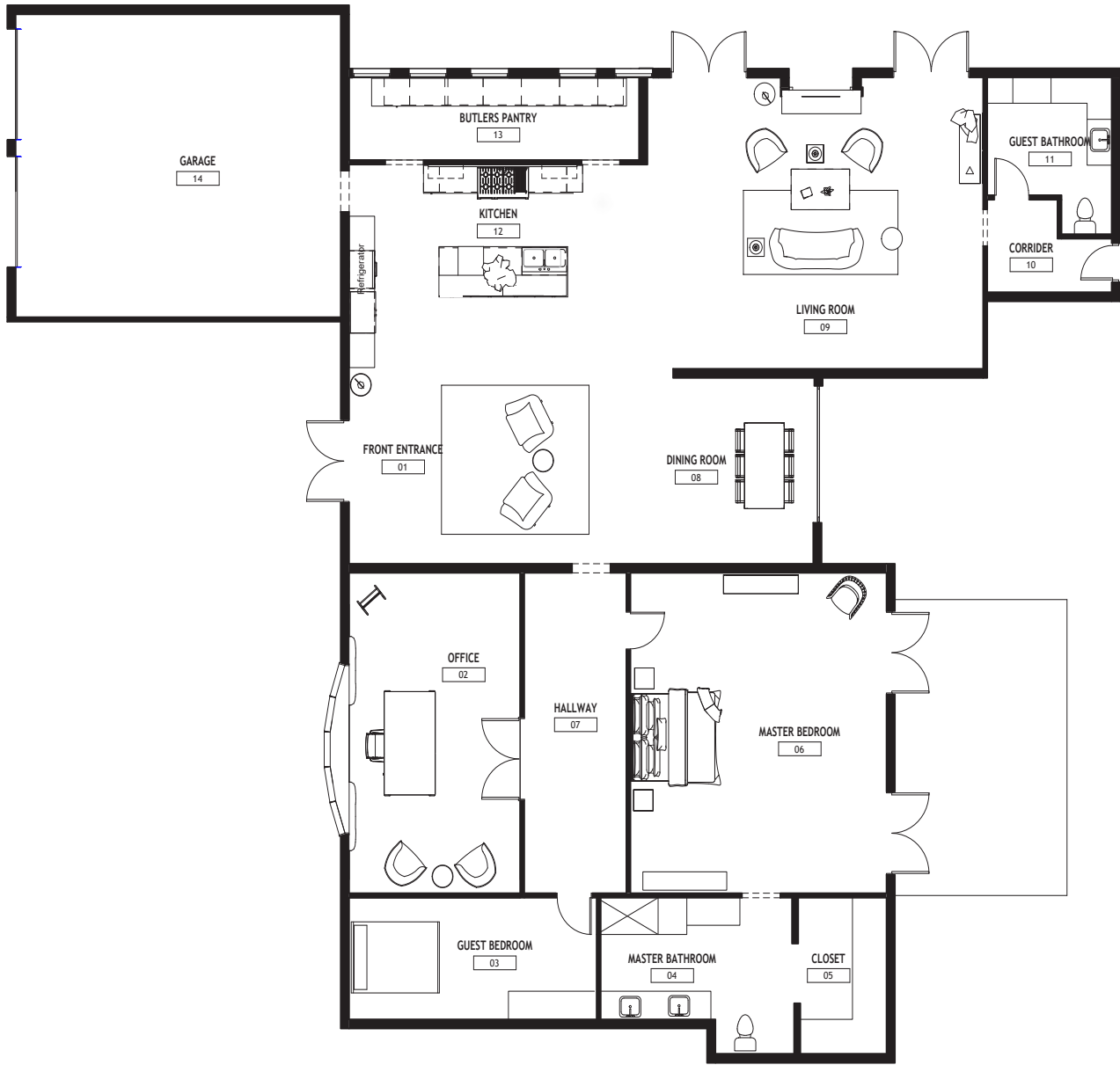
## Project Overview:

This project involved a comprehensive renovation of a single-family residence with the goal of creating a modern, functional, and welcoming living space. The remodel focused on improving the home's layout, enhancing natural light, updating outdated finishes, and increasing accessibility for long-term living.

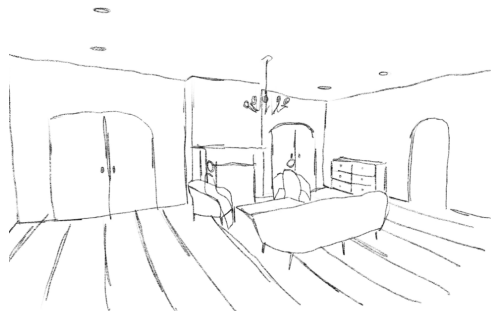
## Project Objectives:

- Transform outdated interiors into a bright, open-concept layout
- Incorporate high-quality finishes that blend comfort and style
- Expand kitchen and living areas for better flow and functionality
- Upgrade bathrooms and bedrooms for comfort and aesthetics
- Ensure the space meets modern lifestyle needs while maintaining character

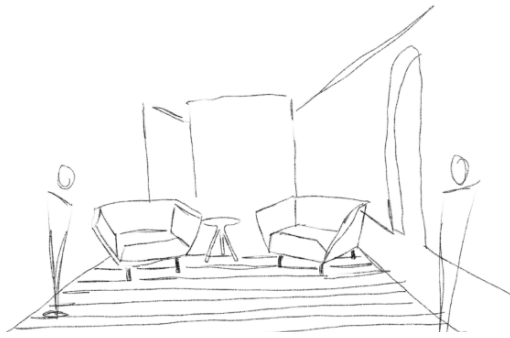
# WELCH RESIDENCE REMODEL



FLOOR PLAN



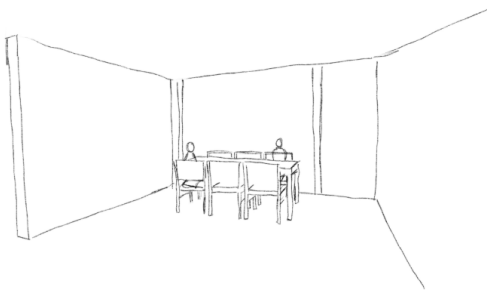
Spacious, classy, airy



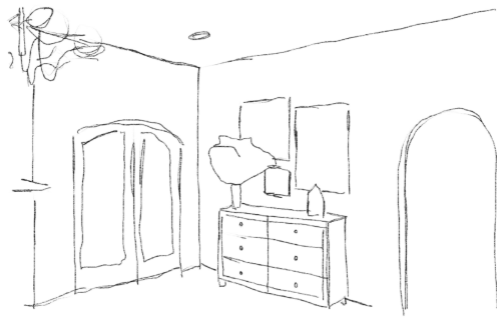
Open, inviting, warm



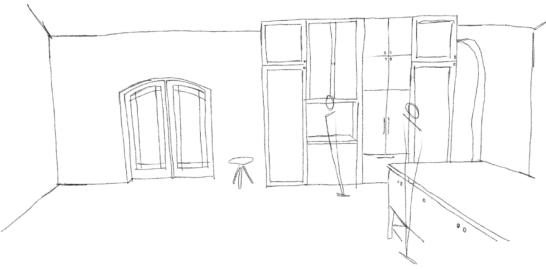
Functional, organized, bright



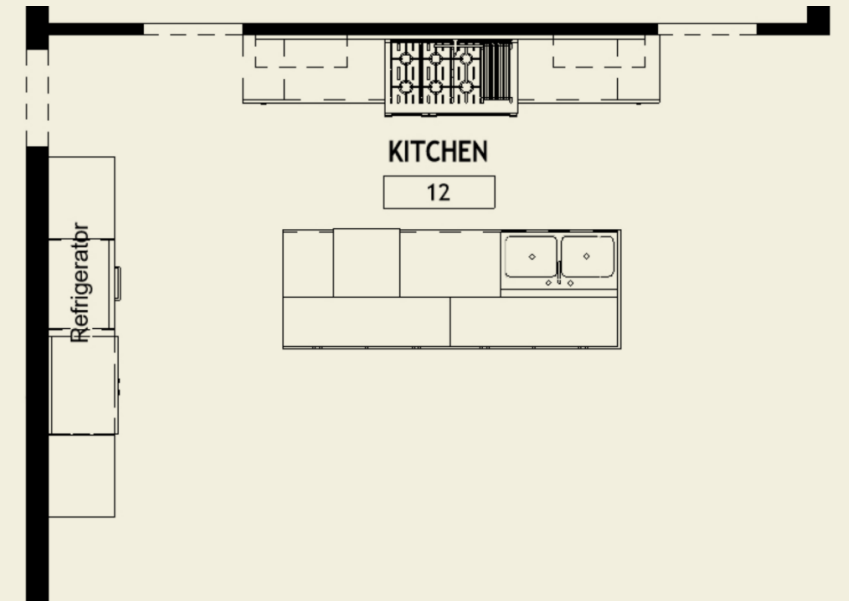
Meeting, gathering, the “spot”



Sophisticated, polished, timeless

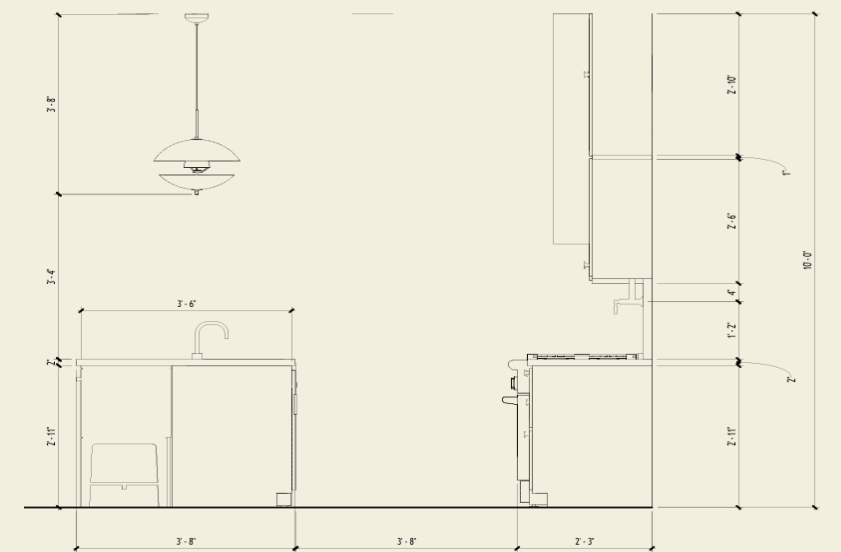
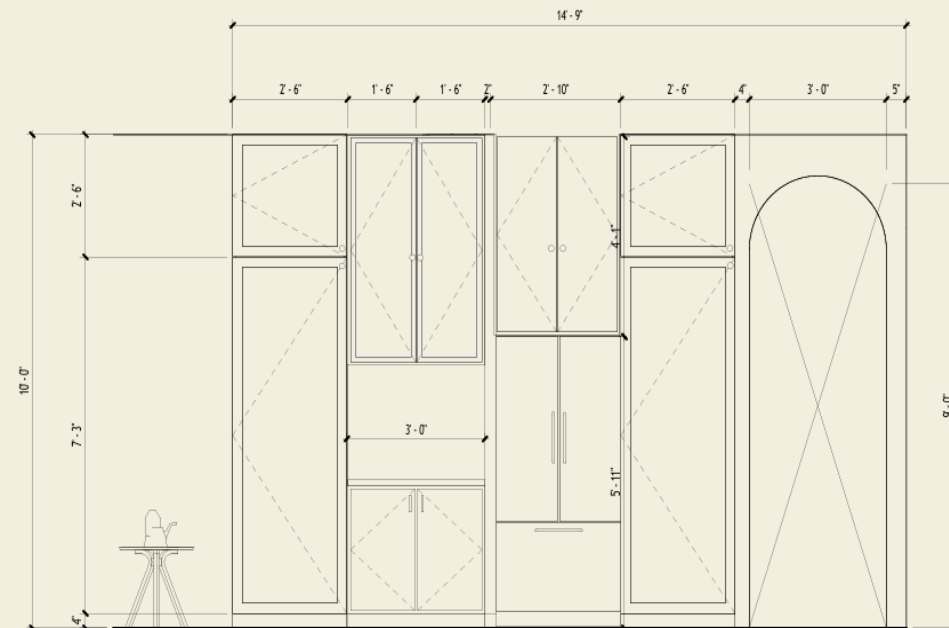
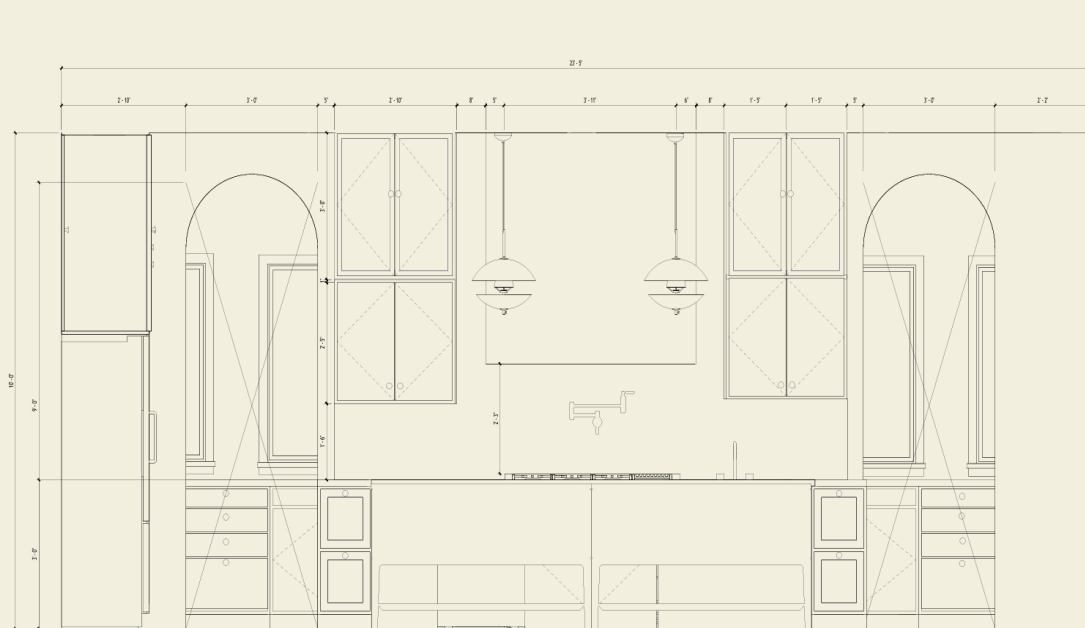


Common area, lively, entertaining



Created in Revit

Elevations created in Revit



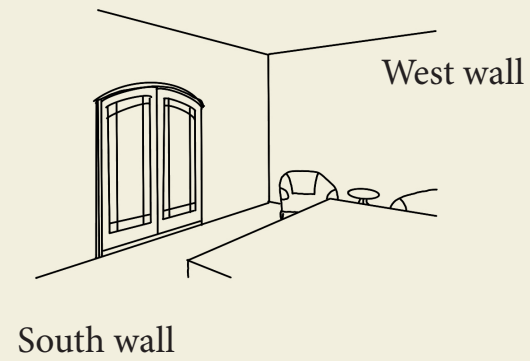
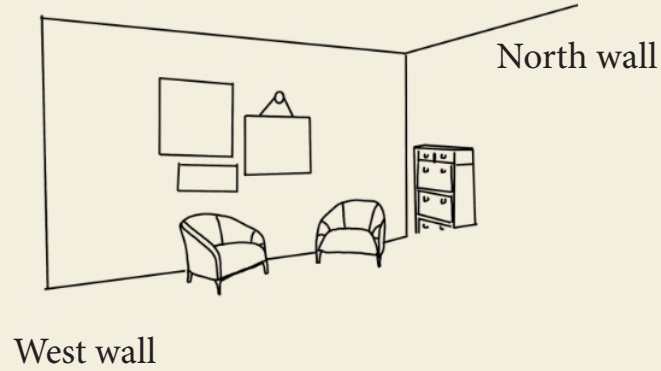
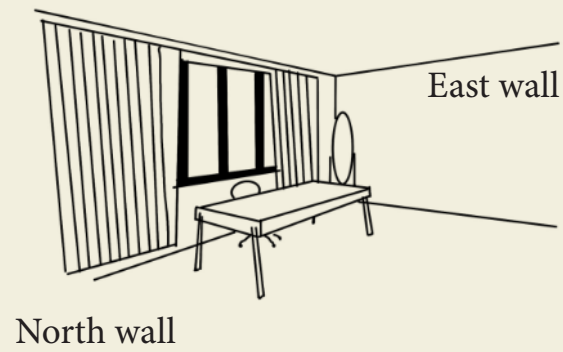
Kitchen



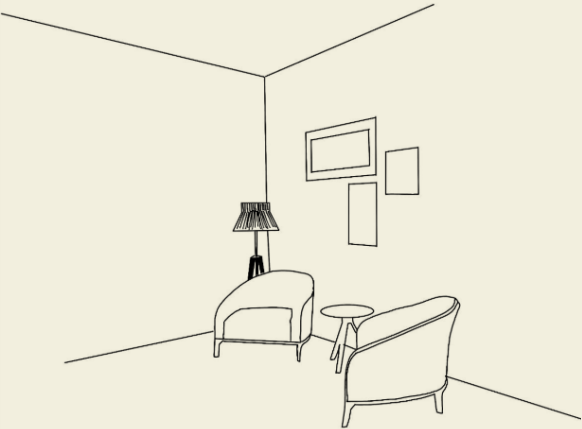
Living Room



In Home Office



Idea  
Sketched in Procreate



Execution  
Created in AutoCad, rendered in Photoshop



WALL ART



DESK



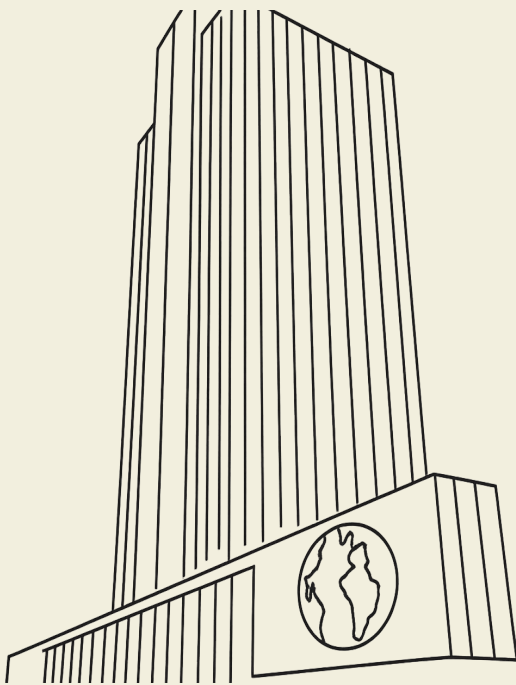
DESK CHAIR



MIRROR DECOR



# Church Office Building



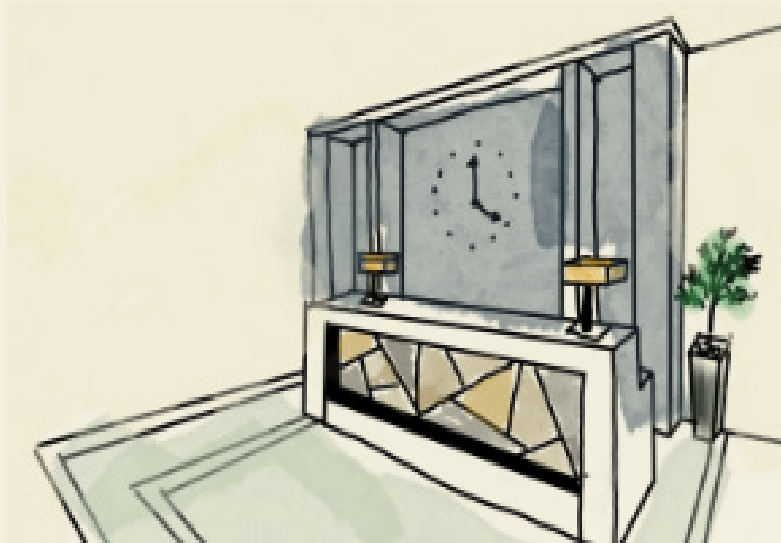
## Project Overview:

This project centers on transforming the 7th floor of the Church Office Building into a dynamic, hybrid workspace that supports both in-person and remote work. In response to evolving work patterns and organizational needs, the redesign will promote flexibility, collaboration, and spiritual-centered productivity, while honoring the sacred purpose and mission of the Church.

## Project Objectives:

- Transition from traditional office design to a flexible, hybrid model
- Support remote and in-office collaboration with upgraded technology
- Provide a range of work settings: hoteling desks, quiet zones, meeting rooms, and team areas
- Create an uplifting environment aligned with Church standards of reverence and excellence
- Optimize floorplan for better space utilization and employee flow
- Encourage interaction while respecting individual focus needs

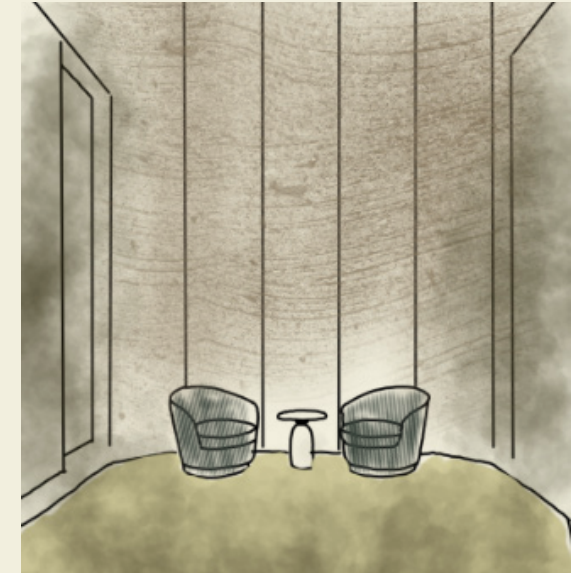
## Story Board Sketches



Professional, Polished



Interactive, Meeting space



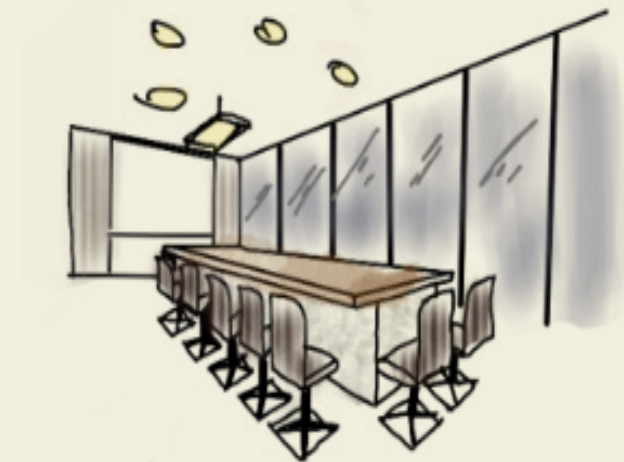
Sit down, Conversation



Inviting, Sociable



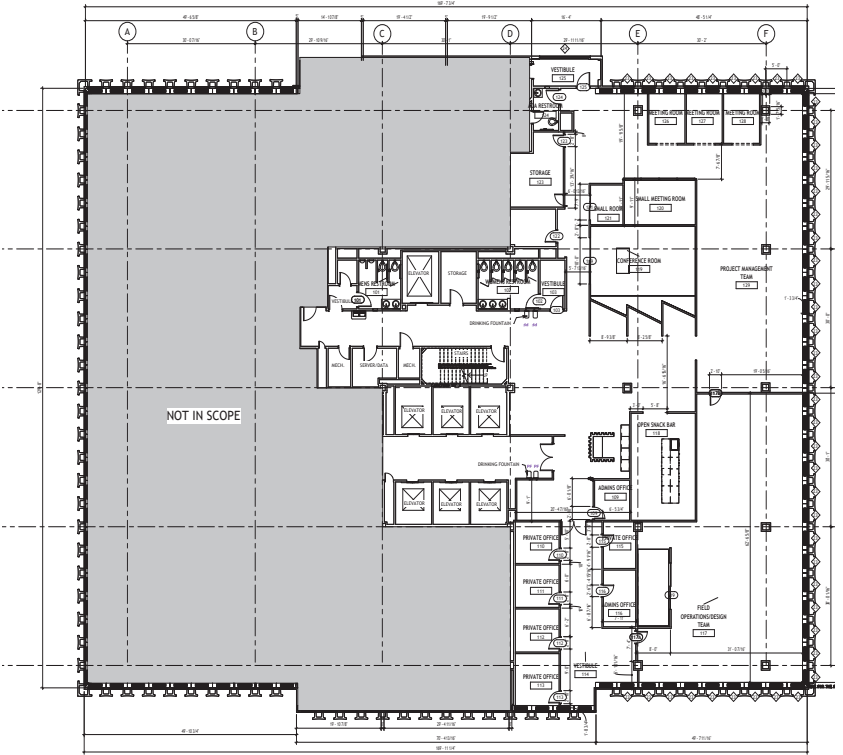
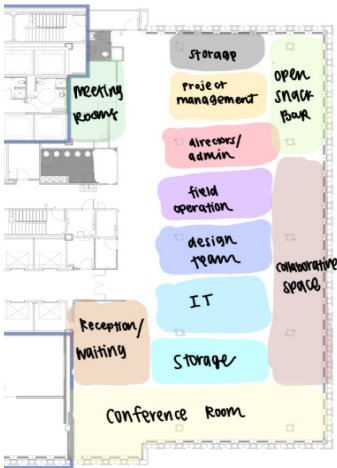
Heads down work, Quiet



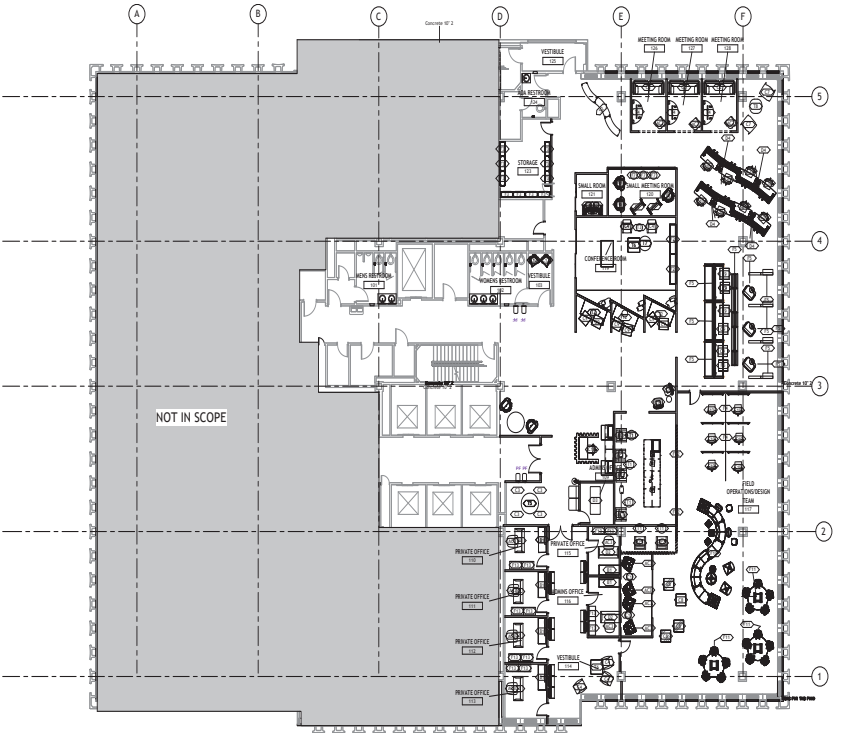
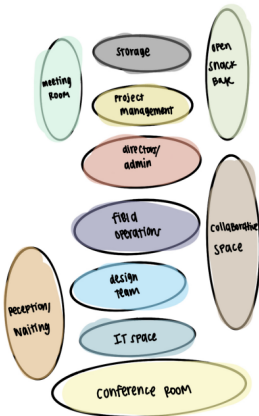
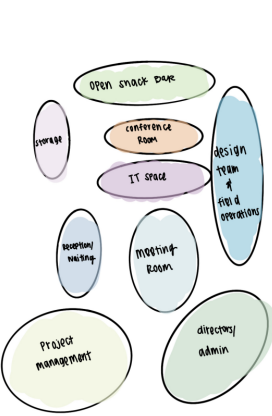
Brainstorming, Communication

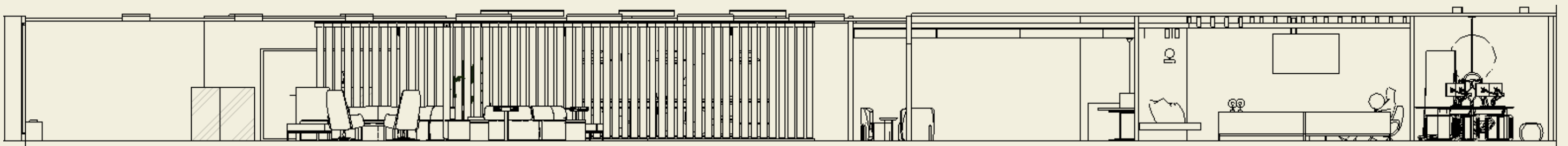
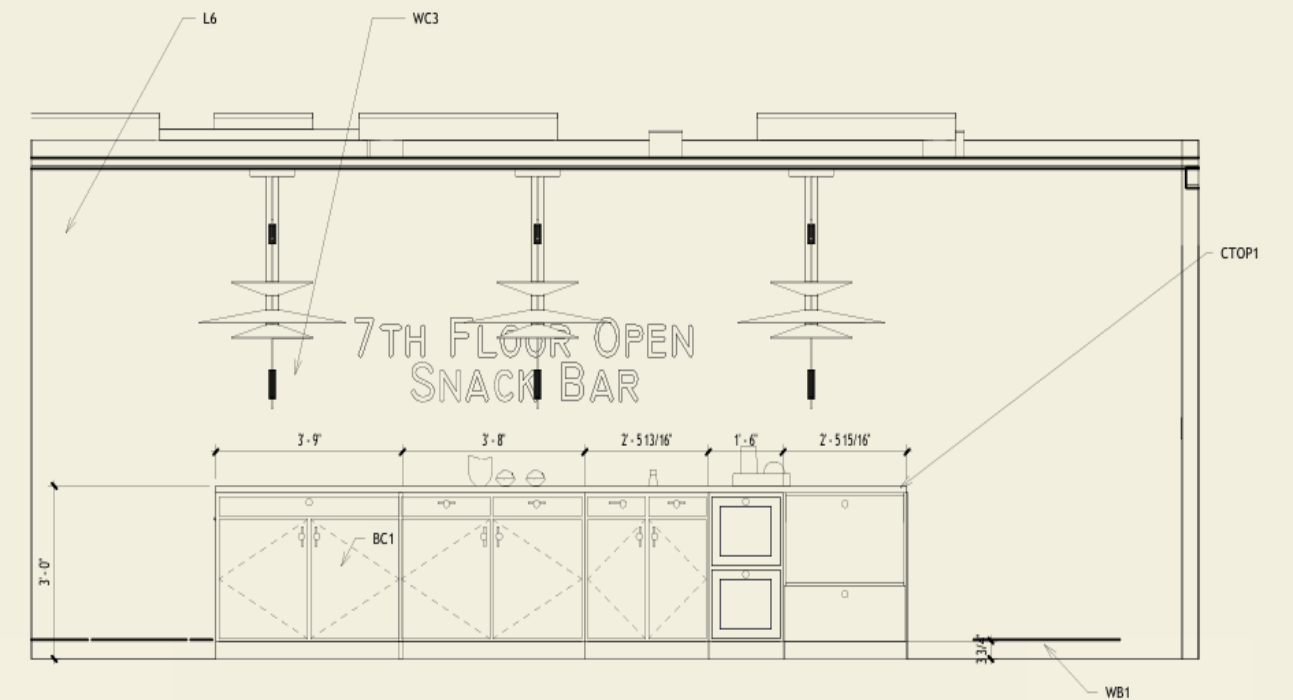
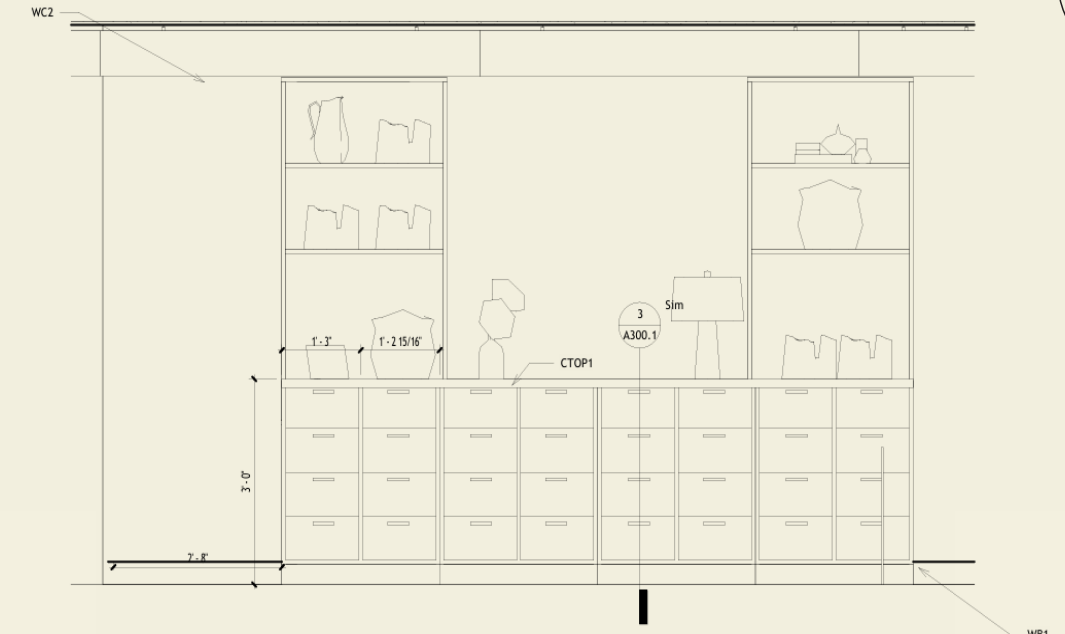
# Design Process

New Plan

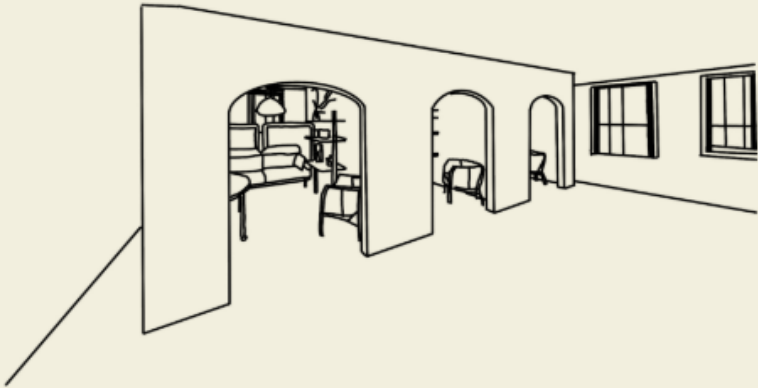


Furniture Plan

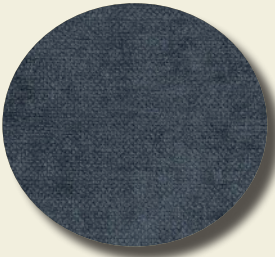




Project Mangement  
Small Meeting Rooms



Design & Field Operations  
Team



Pillow Fabric



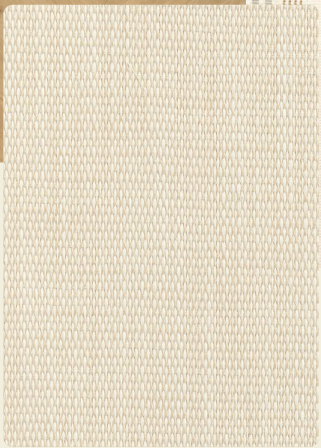
Sofa Fabric



Flooring



Sofa Fabric



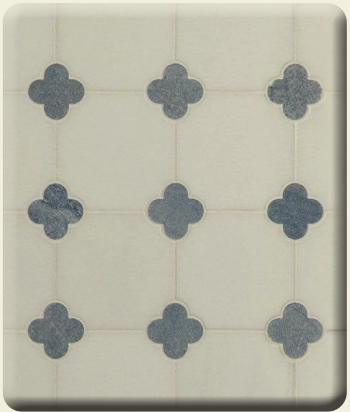
Accent Chair Fabric



Herringbone Floor

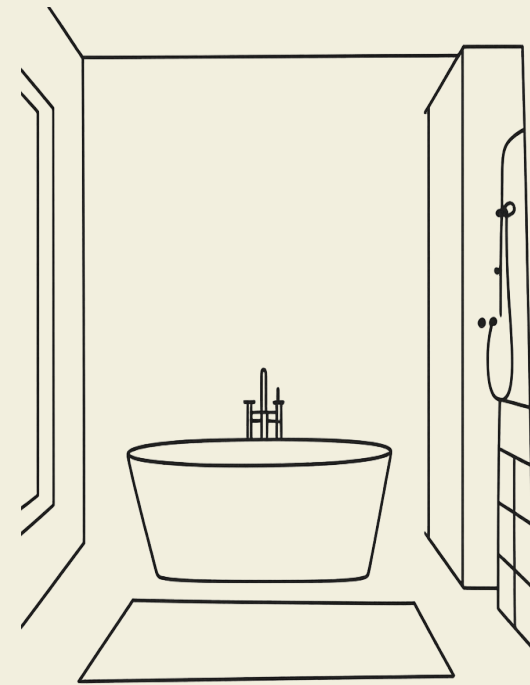


Wall Tile



Column Tile

# NKBA Bathroom



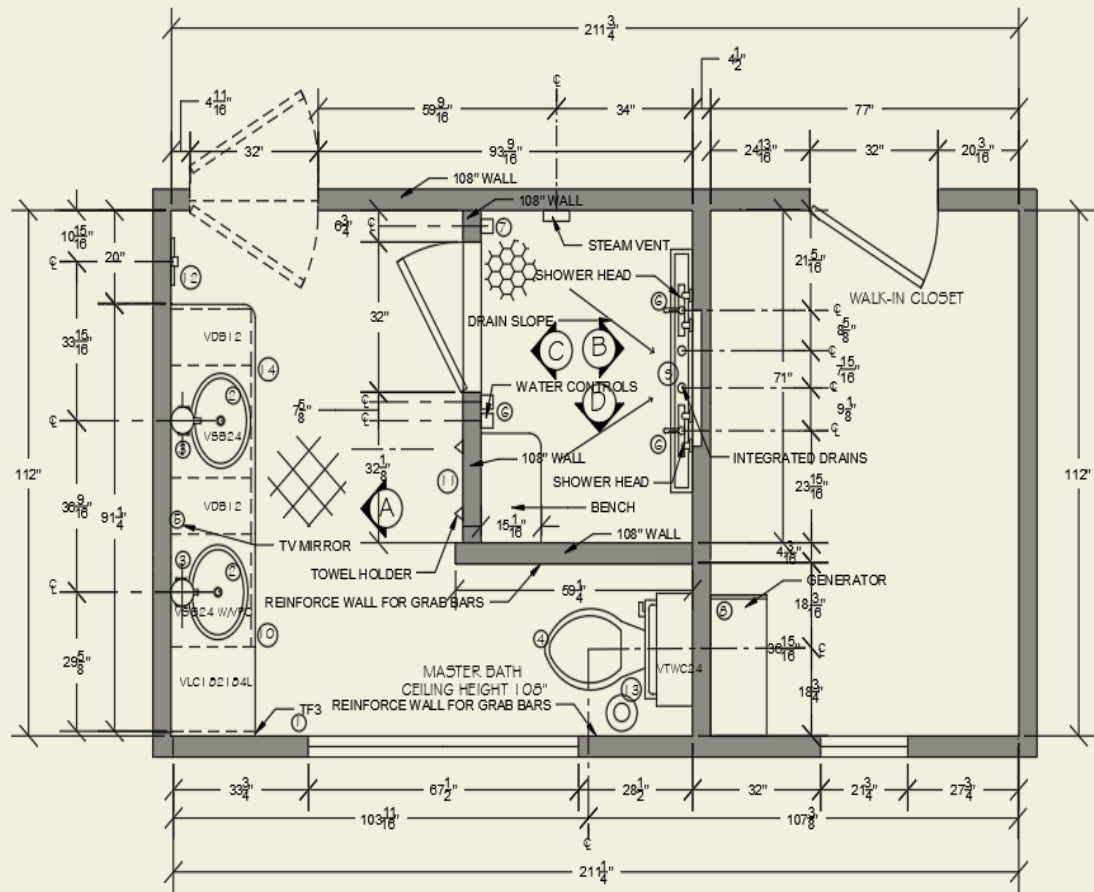
## Project Overview:

This project involved a full renovation of a residential bathroom with a strong focus on functionality, safety, and design—executed in accordance with the guidelines set by the National Kitchen & Bath Association (NKBA). The remodel sought to improve layout efficiency, increase comfort, and elevate the overall aesthetic while ensuring the space meets the highest industry standards. cred purpose and mission of the Church.

## Project Objectives:

- Comply with all relevant NKBA planning and safety guidelines
- Improve fixture placement, traffic flow, and accessibility
- Upgrade materials and finishes to high-performance, water-resistant options
- Enhance storage, lighting, and ventilation
- Provide a spa-like experience in a residential setting without compromising on function

Bathroom Plan with Nomenclature



SPECIFICATIONS

- ① TF3 CUT TO APPROX 1"W 84"H

② UNDERMOUNT SINK  
MDL#: K-2882-96 KOHLER  
19W X 15D X 6H  
BISCUT  
QTY: 2

③ TOUCHLESS SINGLE HOLE  
FAUCET  
MDL#: K-13460-CP KOHLER  
2.9W X 6.3L X 24H  
VIBRANT STAINLESS  
QTY: 2

④ TOILET  
MDL#: M5855 I CUMFG NEOREST  
27-1/4" L x 15-1/4" W x 21-3/8" H  
COTTON

⑤ TV MIRROR  
INTEGRITY  
15.6" OR 21.5"

⑥ SHOWER HEAD & CONTROL  
MDL#: 82971 SRN MOEN  
7-9/32"W X 5-11/16" D X  
7-9/32" H  
BRUSHED NICKEL  
QTY: 2

⑦ STEAM CONTROL  
MR. STEAM IS TEAMX  
7-5/8" W X 1-7/8" D X  
5-3/16" H  
BRUSHED BRONZE

⑧ GENERATOR  
MDL#: M55 SUPER 3E MR. STEAM  
17"L X 18 1/2" H X 7 7/8" D  
QTY: 1
- ⑨ TILE-IN SHOWER DRAIN  
MDL#: 927530-F SIGNATURE  
HARDWARE  
3-3/8"W X 3" H  
OIL RUBBED BRONZE

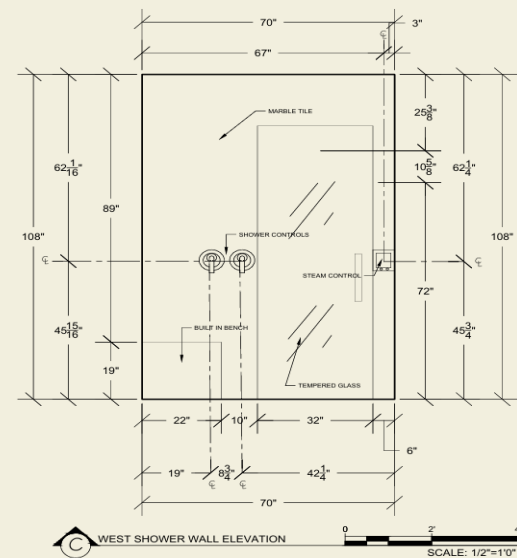
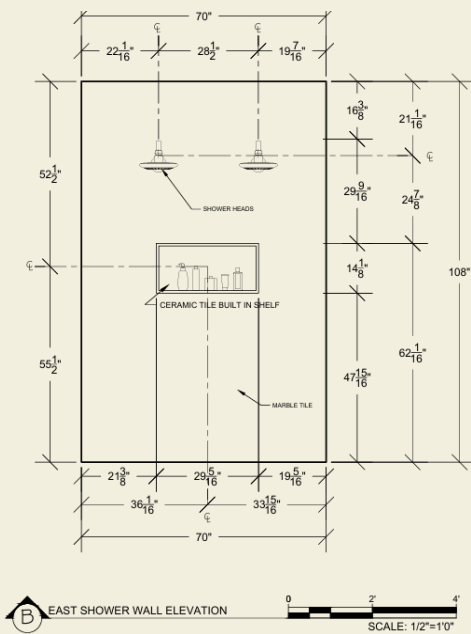
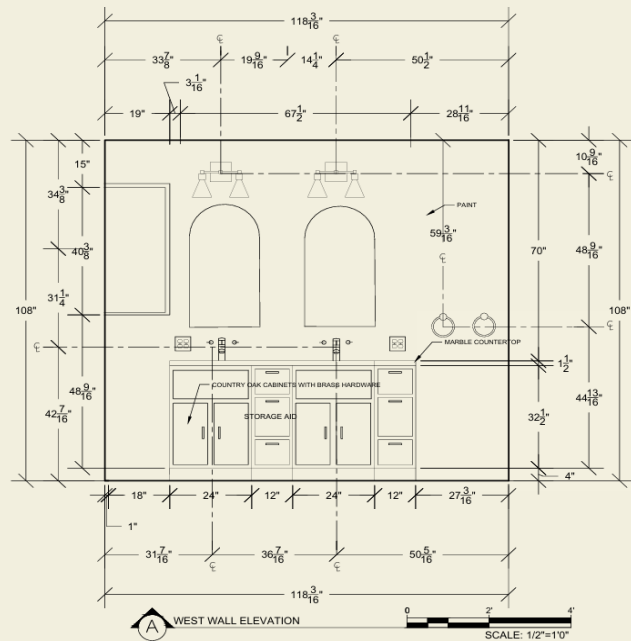
⑩ V9B24 WITH VANITY PULL OUT  
MDL#: 4VOD-18FL5C-1 REV-A-SHELF  
16 1/2"W X 20 1/4"D W X  
9"H  
MAPLE  
QTY: 1

⑪ TOWEL HOLDER  
MDL#: K-14443-2MB KOHLER  
1-7/8"W X 1-3/4"D X 1-3/8" H  
VIBRANT BRUSHED MODERNE  
BRASS  
QTY: 2

⑫ TOWEL RING  
MDL#: K-72571-CP KOHLER  
8-9/16" W X 3"D X 5-9/16" H  
VIBRANT BRUSHED MODERNE  
BRASS

⑬ FREE STANDING TOILET  
PAPER HOLDER  
MDL#: CC2107 KINGSTON  
8-3/8"W X 21-1/2"H  
BRUSHED BRASS  
QTY: 1

⑭ TK-8  
QTY: 2



NKBA Bathroom Renders

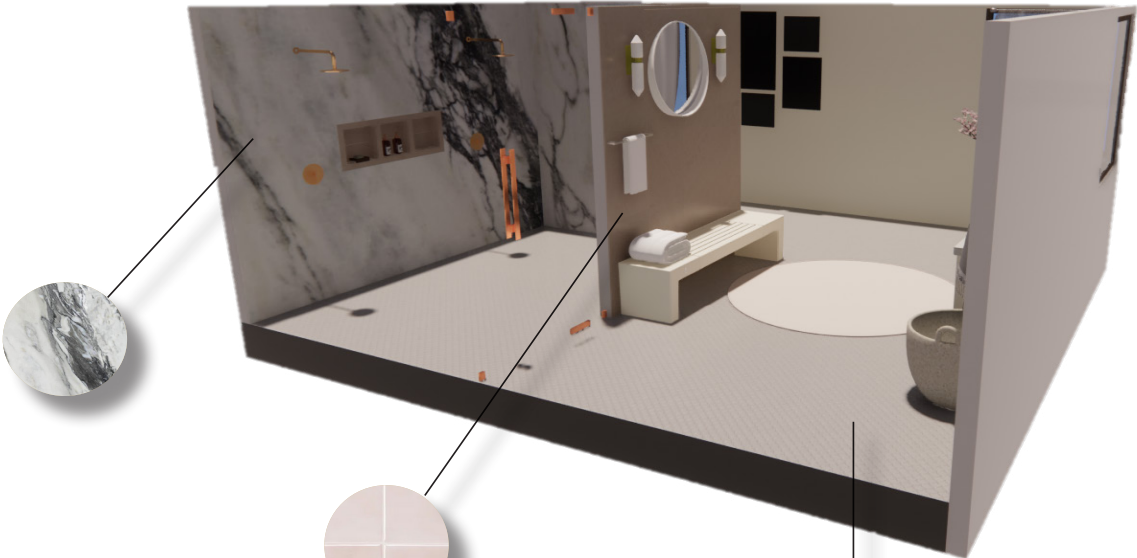
Materials



West view



East view



Thank You

