

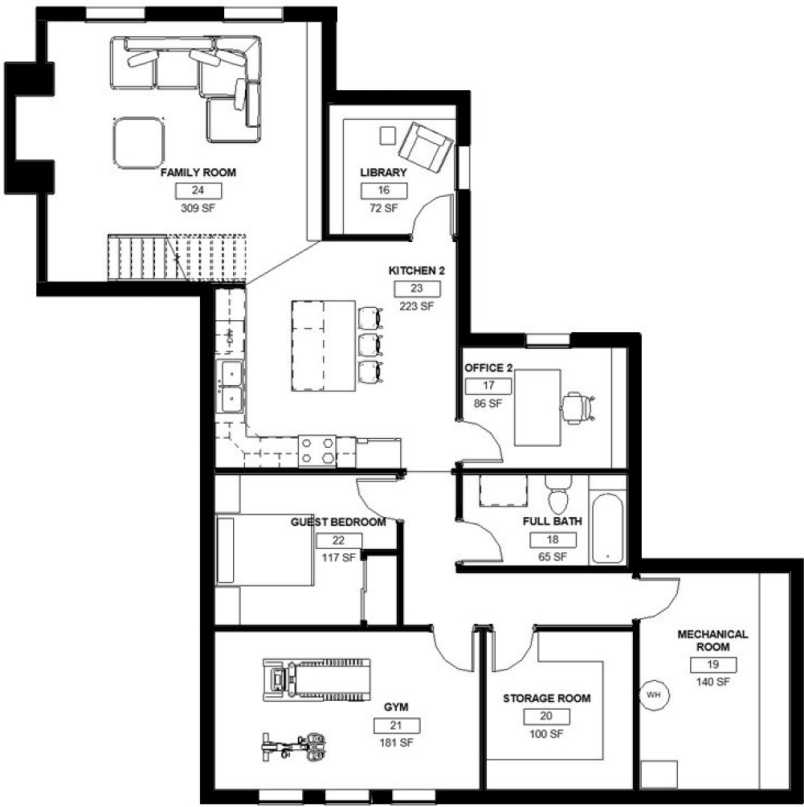
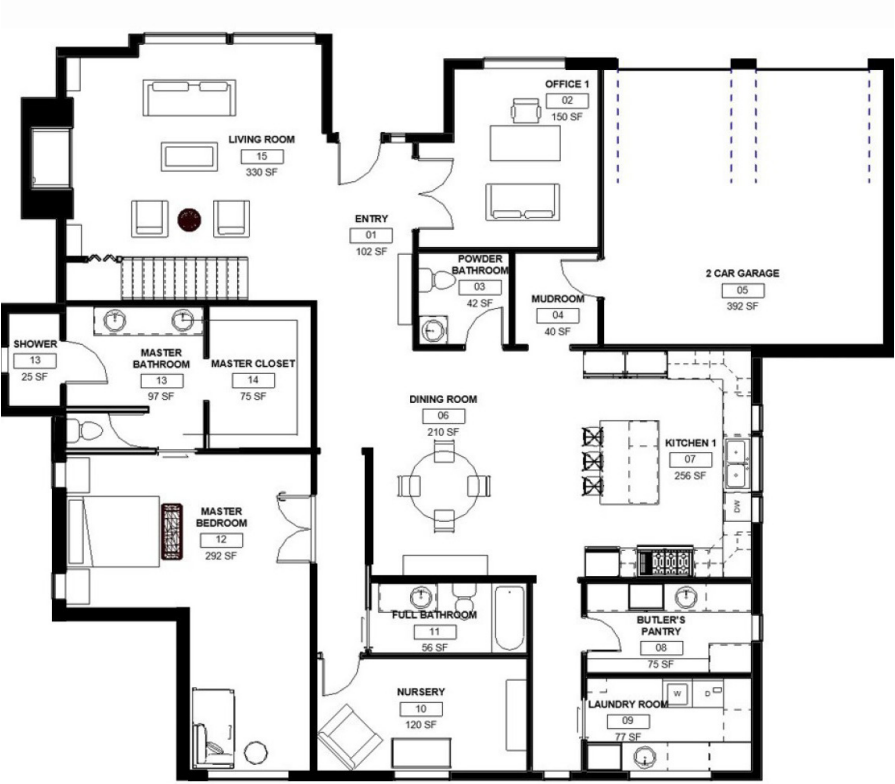
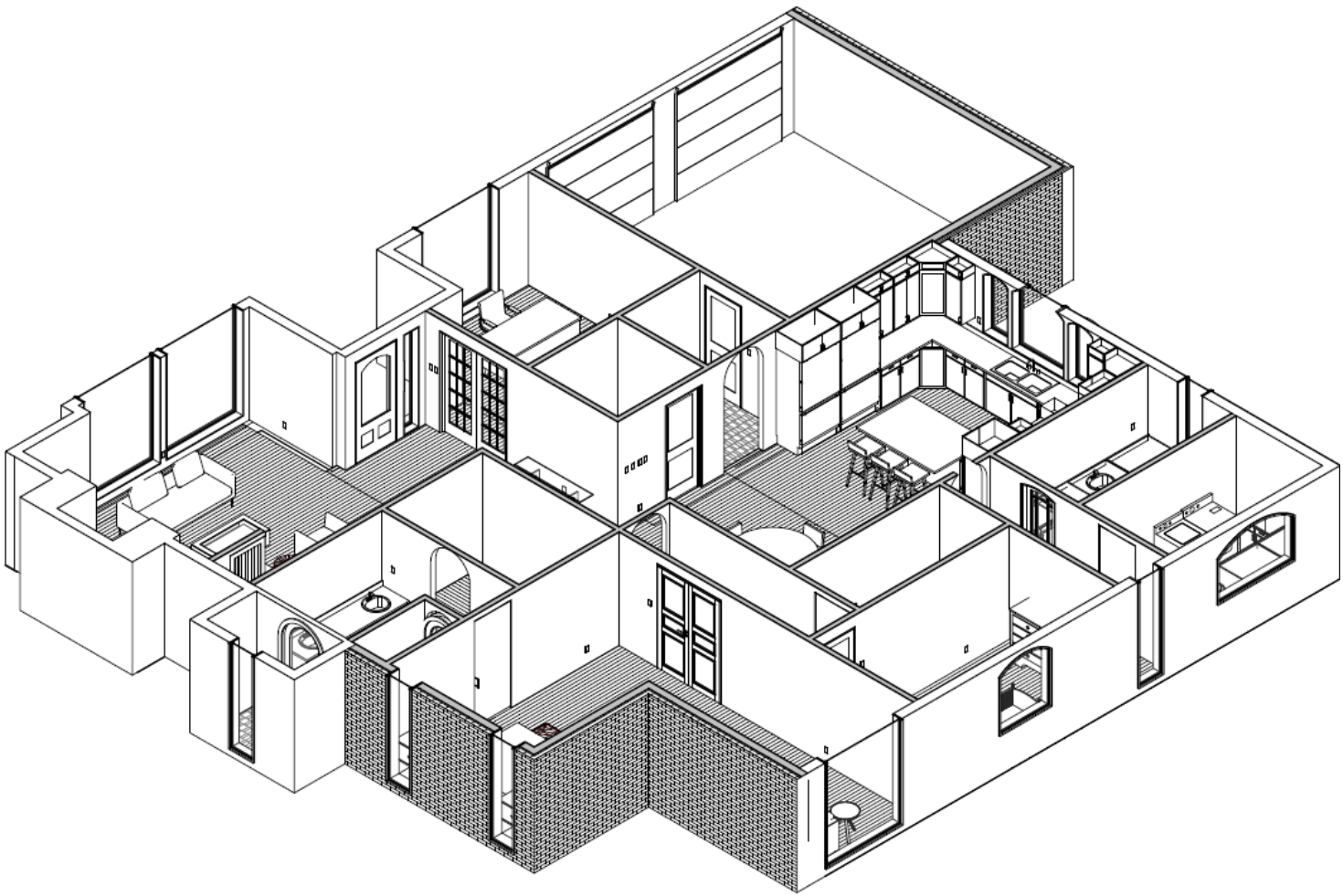
TWO-STORY HOME REMODEL

Project Summary:

The client requested a remodel of their 4,139 square feet, two story home. It was outdated and dysfunctional. By opening the space and adding curved lines and natural materials, it created a more open and inviting space.

Design Statement:

The intent of this design is to renovate the space to make it more open and inviting, bring in a lot of natural lighting and update the furniture and accessories.





Kitchen Rendering



Kitchen Selections



Butler's Pantry Selections

Butler's Pantry
Sketch

Kitchen Sketch



Dining Room
Render & Sketch



Dining Room
Selections

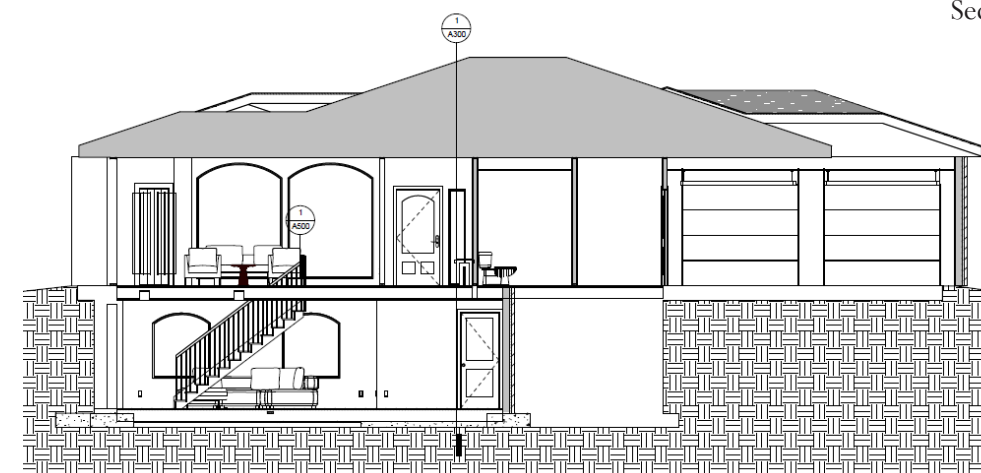




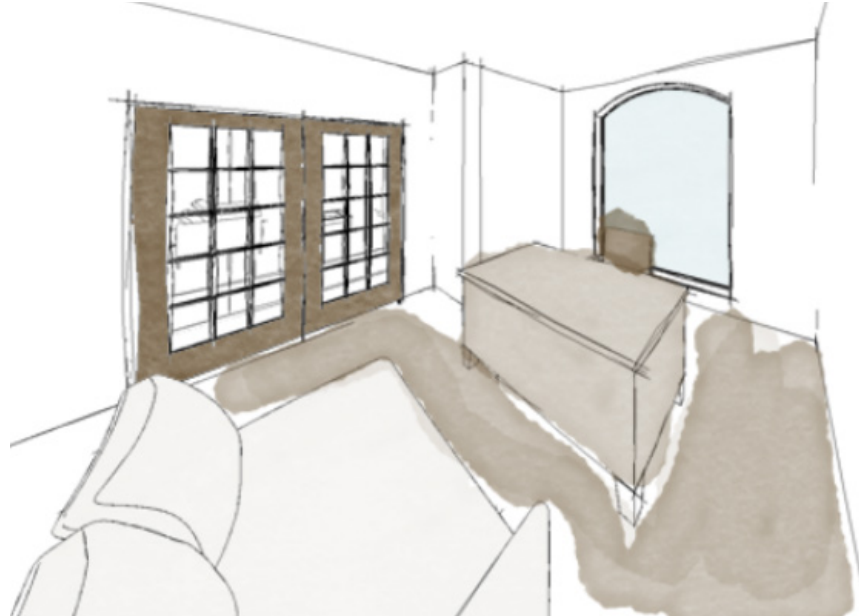
Living Room
Rendering



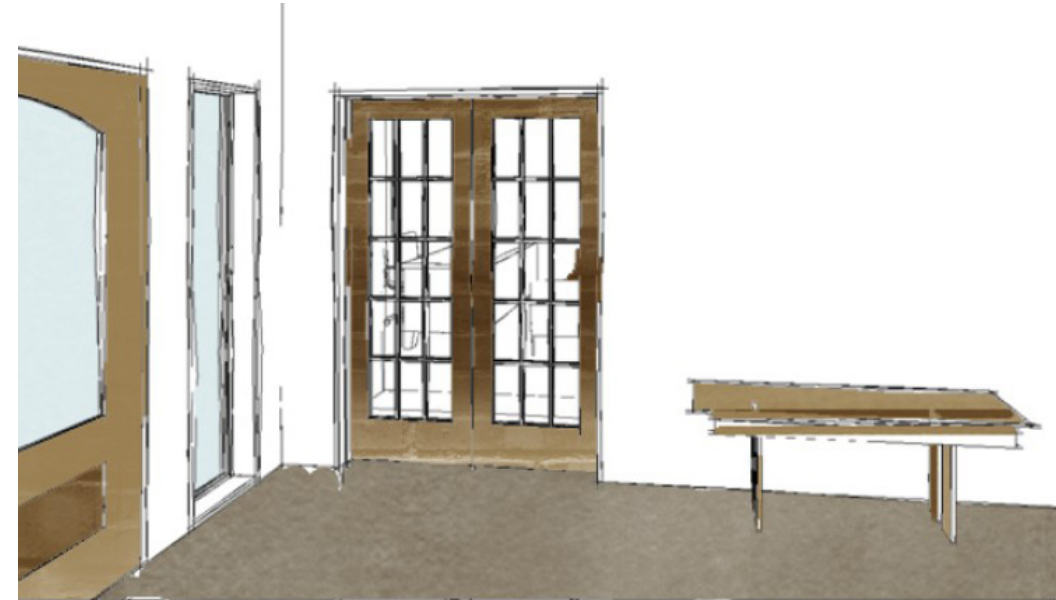
Living Room
Selections



Living Room
Section



Office Sketch



Entry Sketch



Office Selections



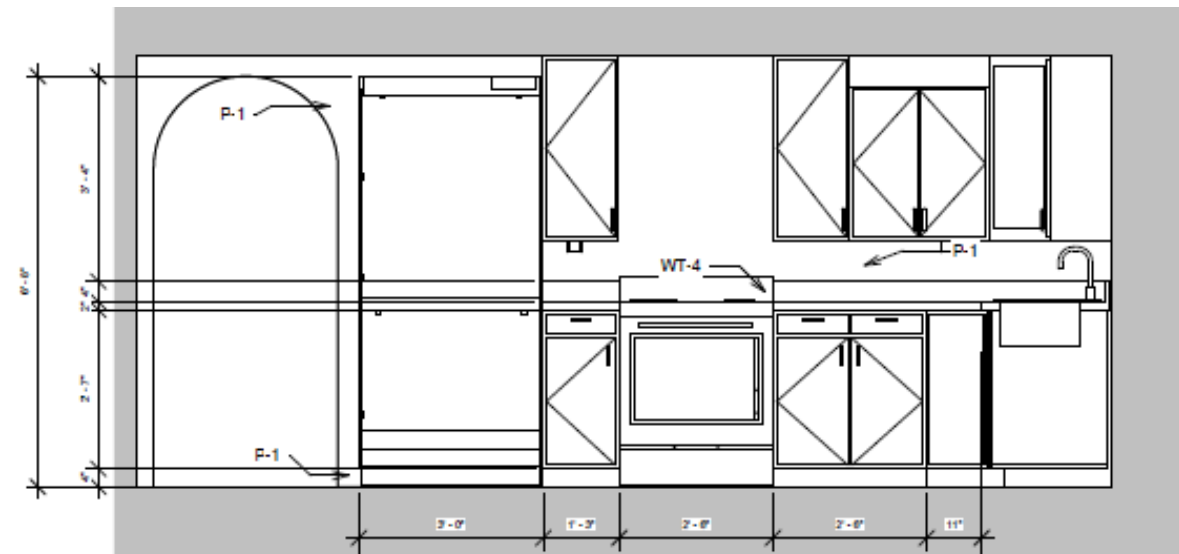
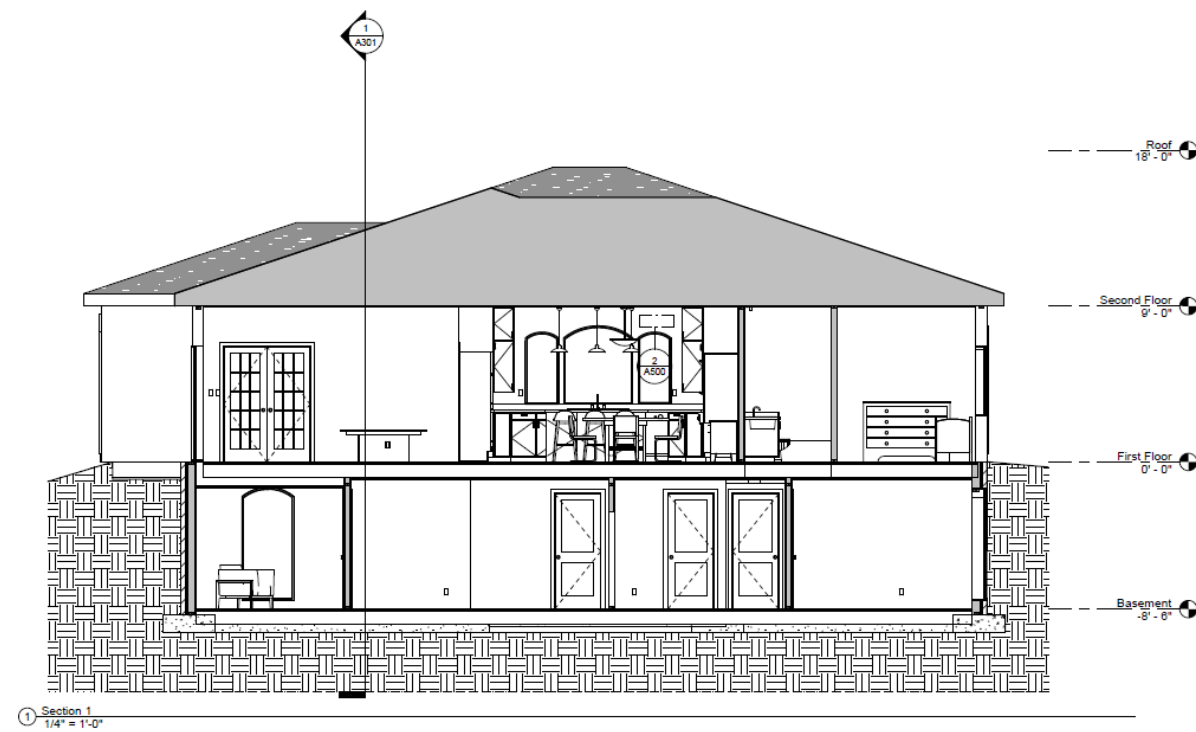
Entry Selections



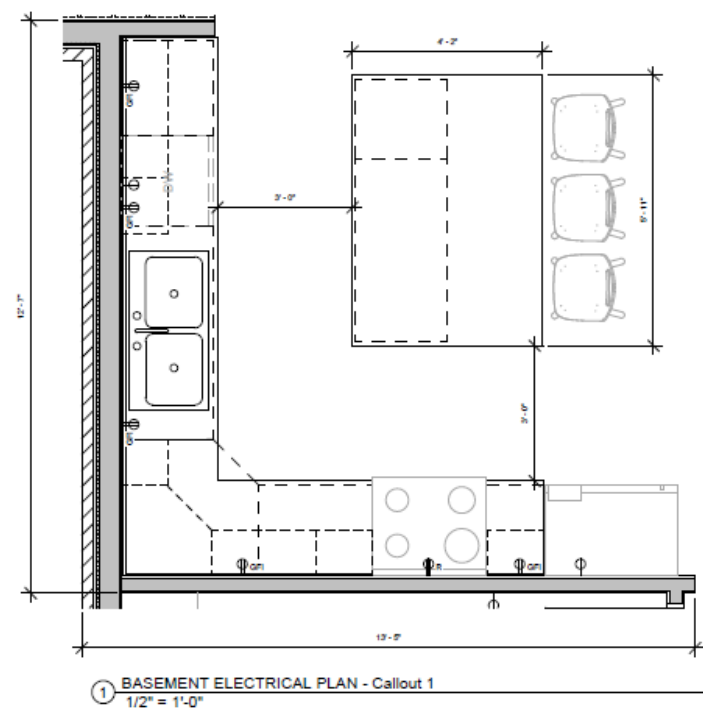
Guest Bedroom



Master Bedroom



Basement Kitchen Section



Basement Kitchen



Family Room Selections

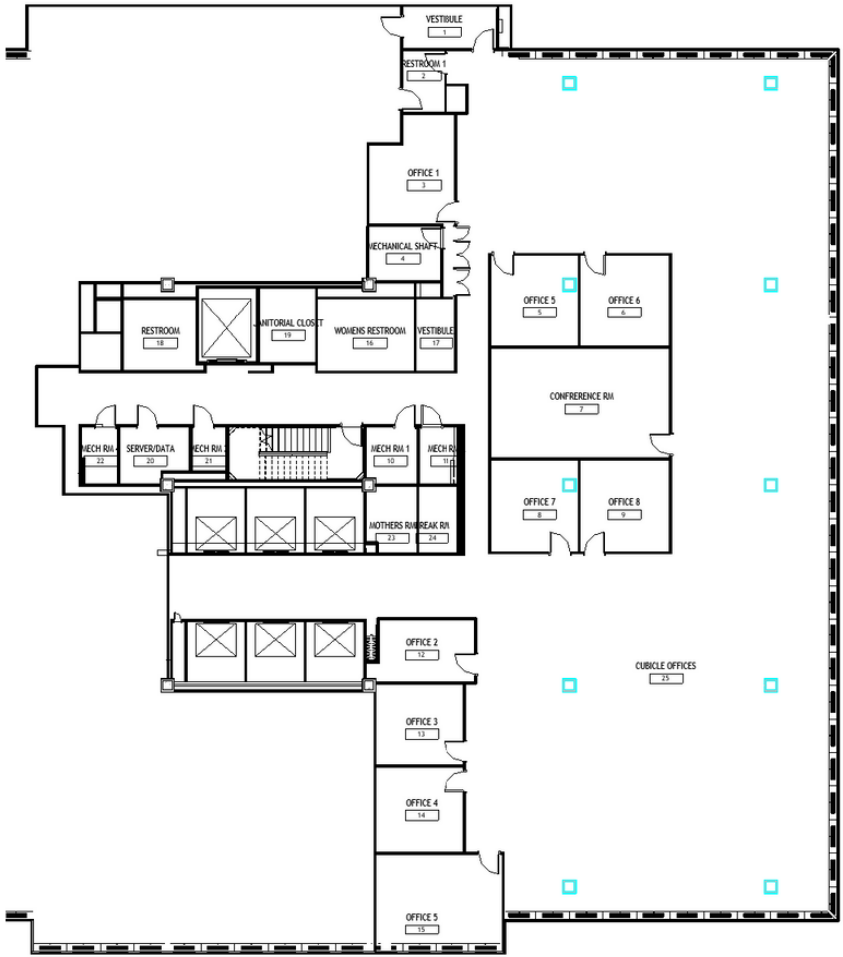
COMMERCIAL BUILDING REMODEL

Goals:

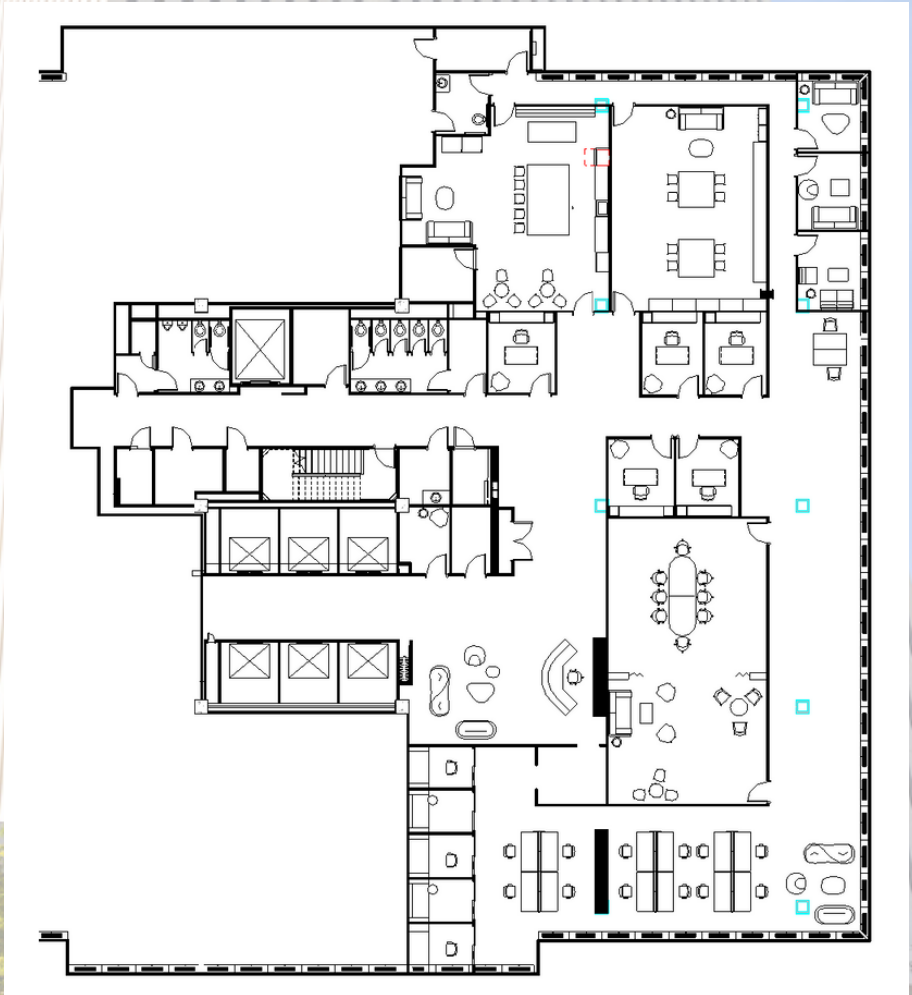
- Transformed into a hybrid workspace
- Collaborative and welcoming space
- Emphasis on wellness through natural light and materials

Design Statement:

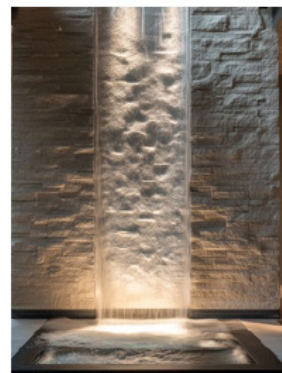
The intent of this design is to update the existing commercial office space to a new and welcoming hybrid office, add more collaborative areas for the employees, and create an open concept feeling that embraces natural materials and light.



Before Plan



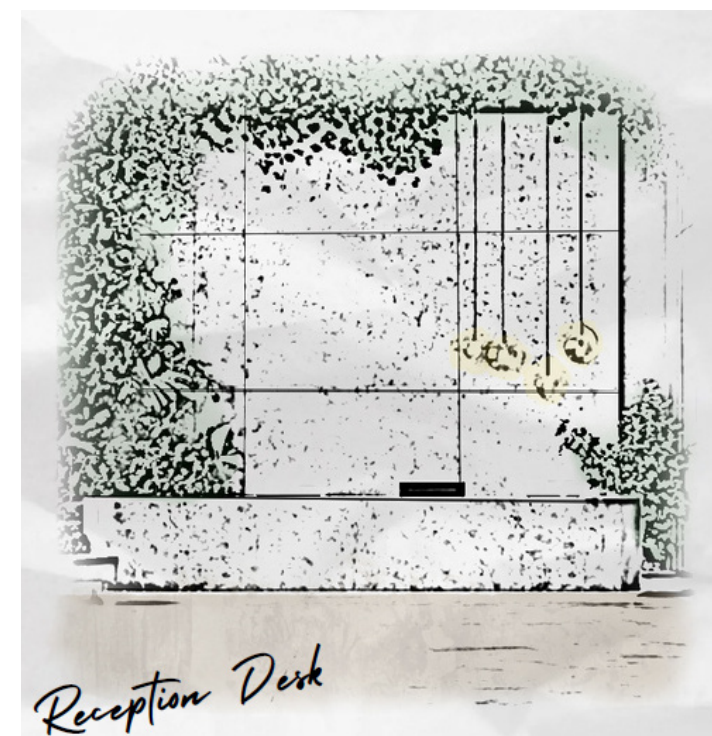
After Plan



“The Lord needs you to change the world.”
President Russell M. Nelson

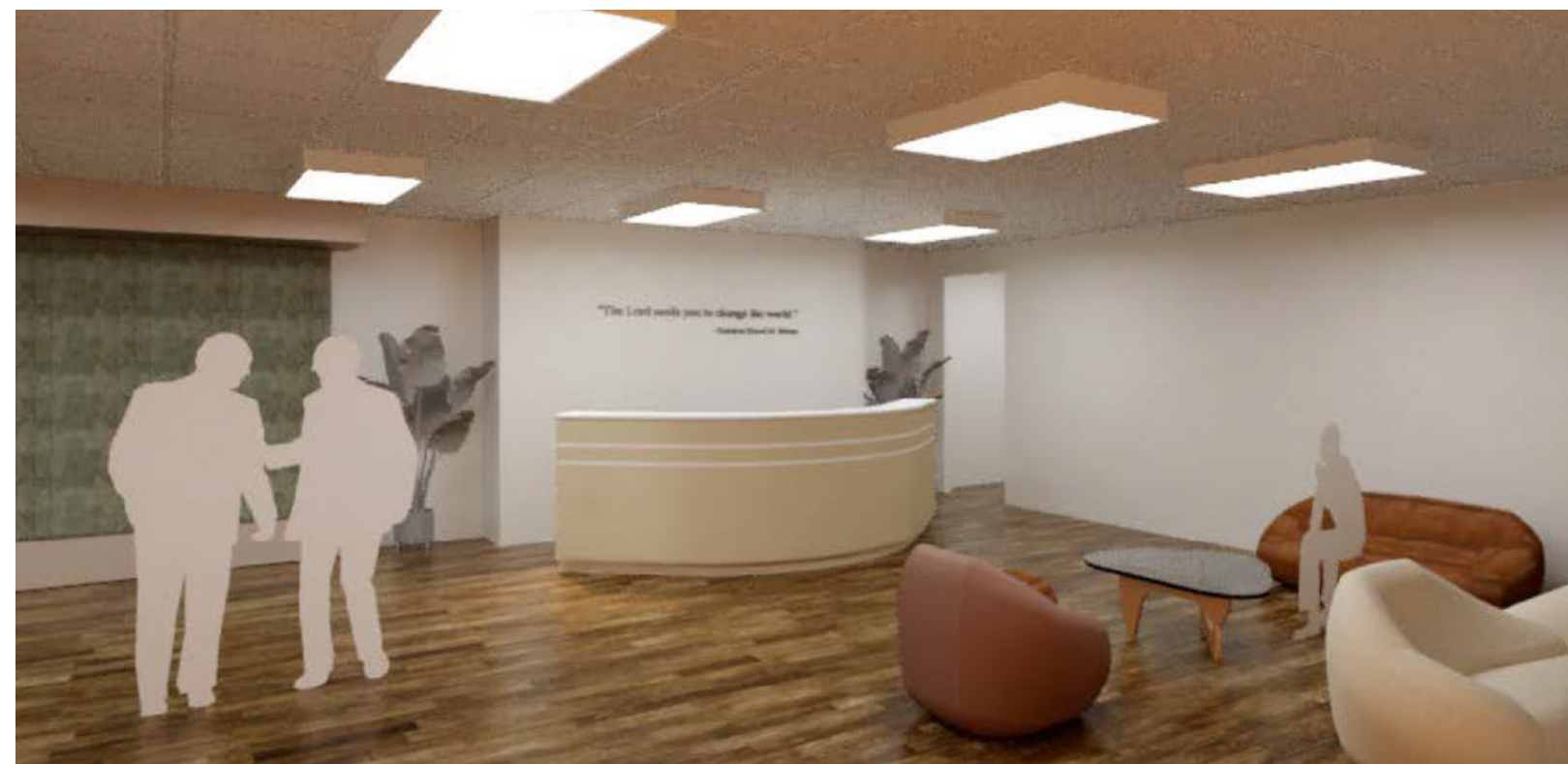
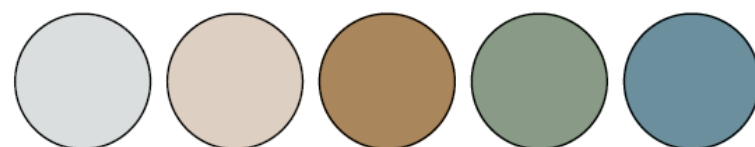


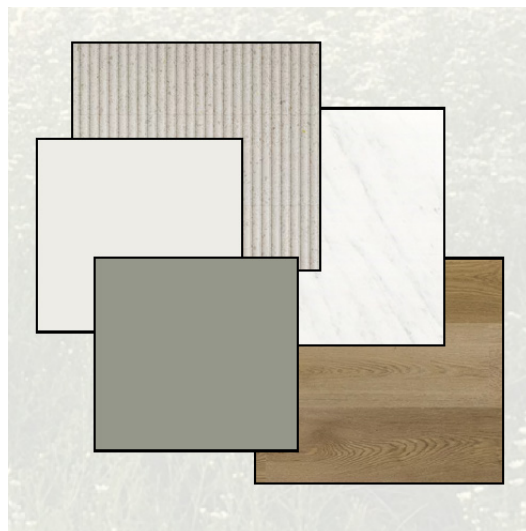
Reception Desk Selections



Reception Desk Sketch

Reception Desk Rendering

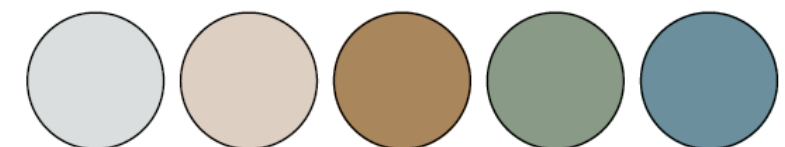




Design Center
Selections



Design Center
Renderings





Design Center Selections



Design Studio Sketch



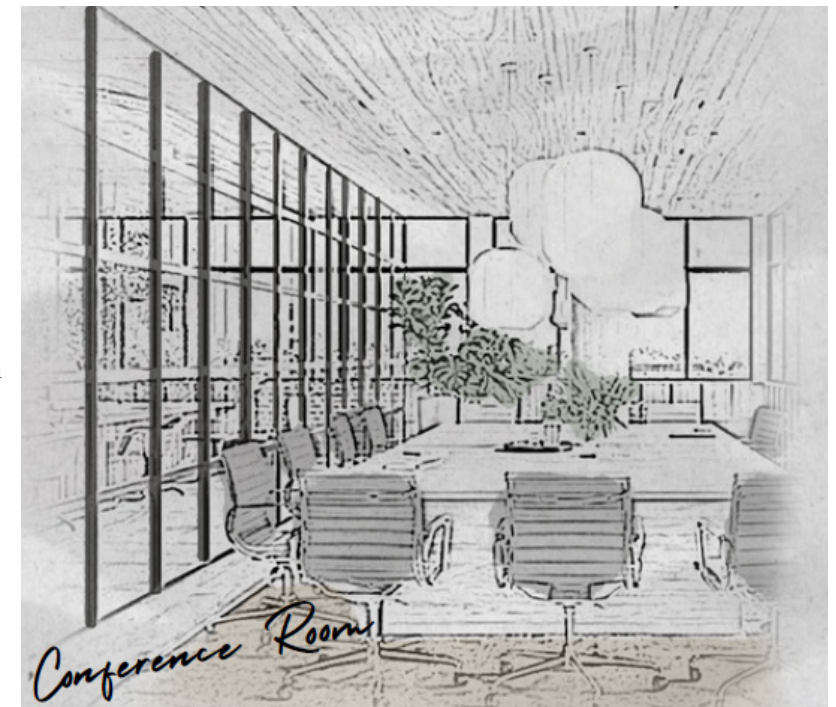
Design Center Sketch

Individual Meeting Room Selections

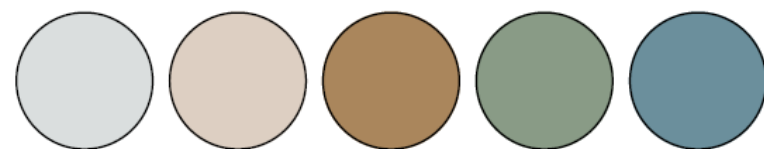




Conference Room
Selections



Conference Room
Sketch

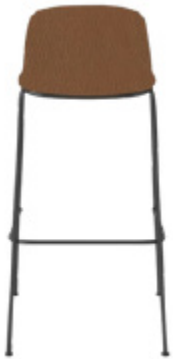


Conference Room
and Desk Spaces
Rendering





Desk Space Selections



Individual Desk Spaces Rendering



Office Space Rendering



Commercial Building Remodel

Storyboard Sketches



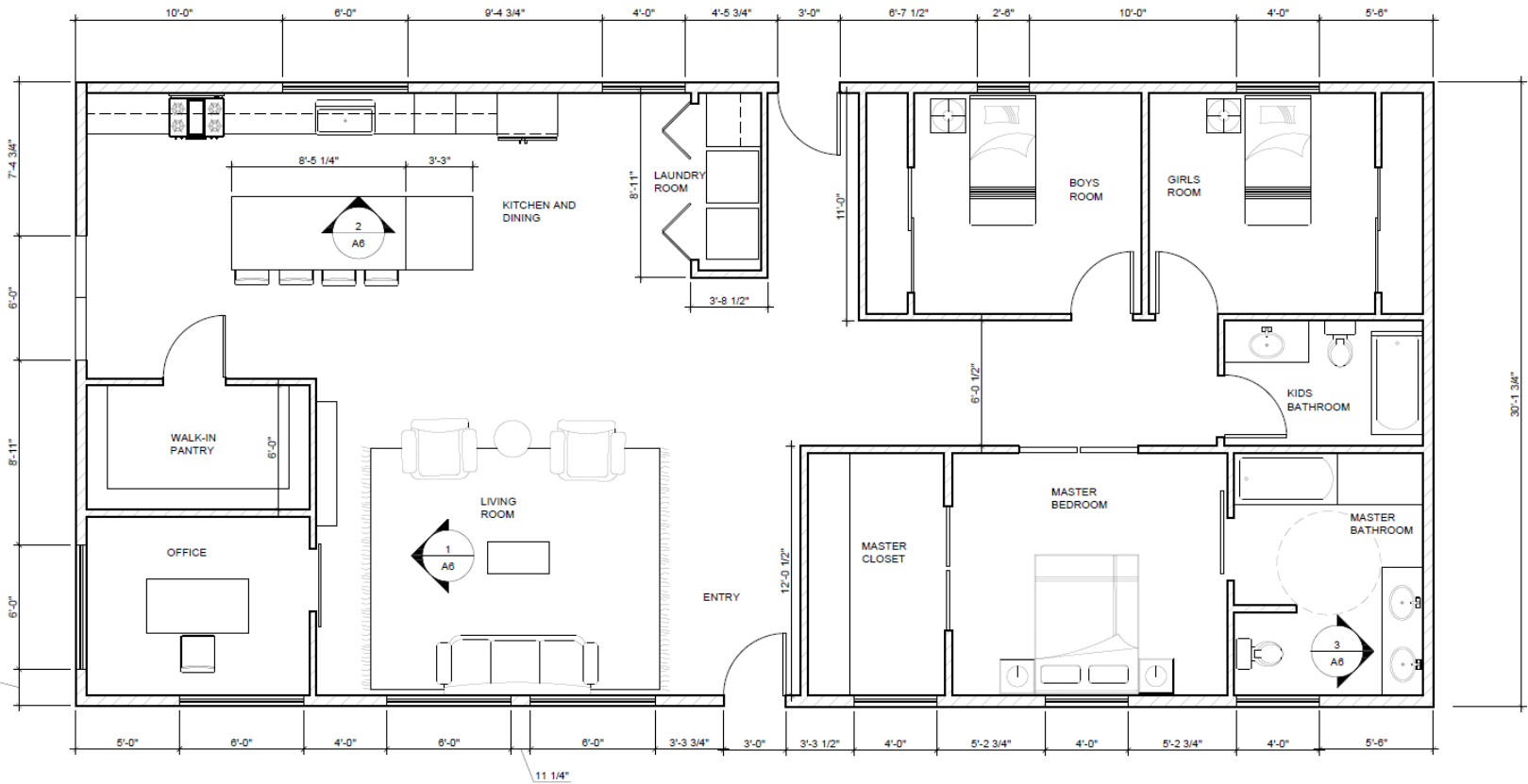
ACCESSIBILITY HOME REMODEL

Project Summary:

This home has been designed to be equipped with ADA compliant furniture and design. The hallways and walkways are all wide enough for the client to comfortably move throughout the space. The counters have all been placed at an ADA approved height. The client will be able to turn around in the various spaces, and access all that they need. The shower is ADA friendly, and the client will be able to comfortably fit in the space. I also included a shower stool for added comfort.



Rendered Floor Plan



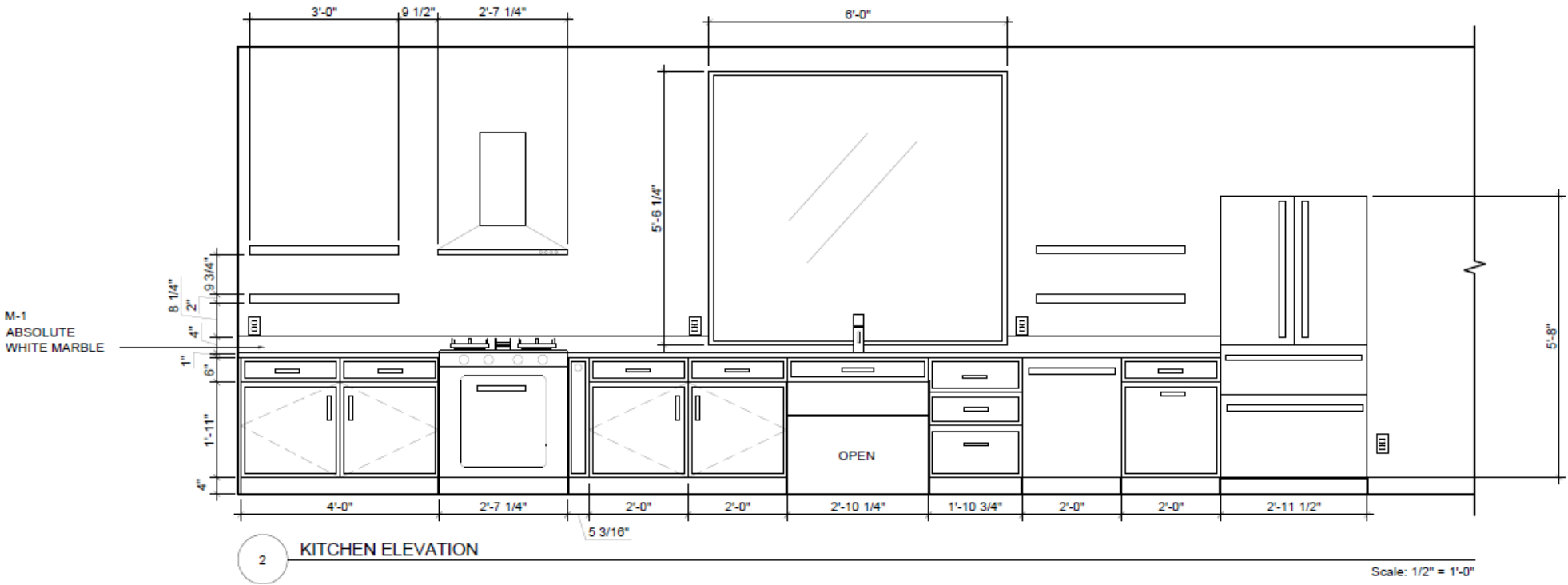
Floor Plan





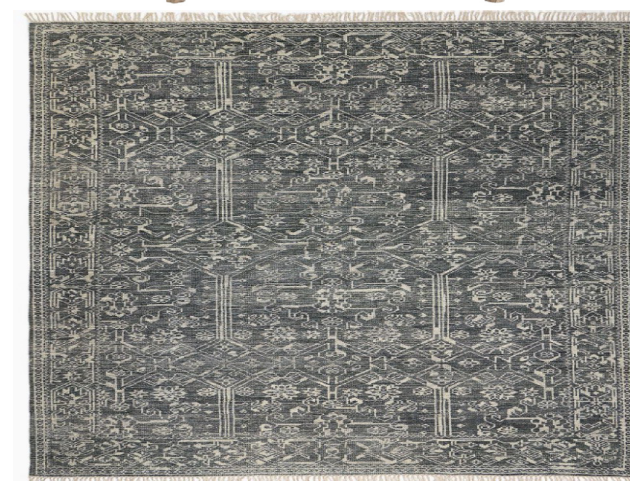
Kitchen Elevation and Rendering

Kitchen Selections

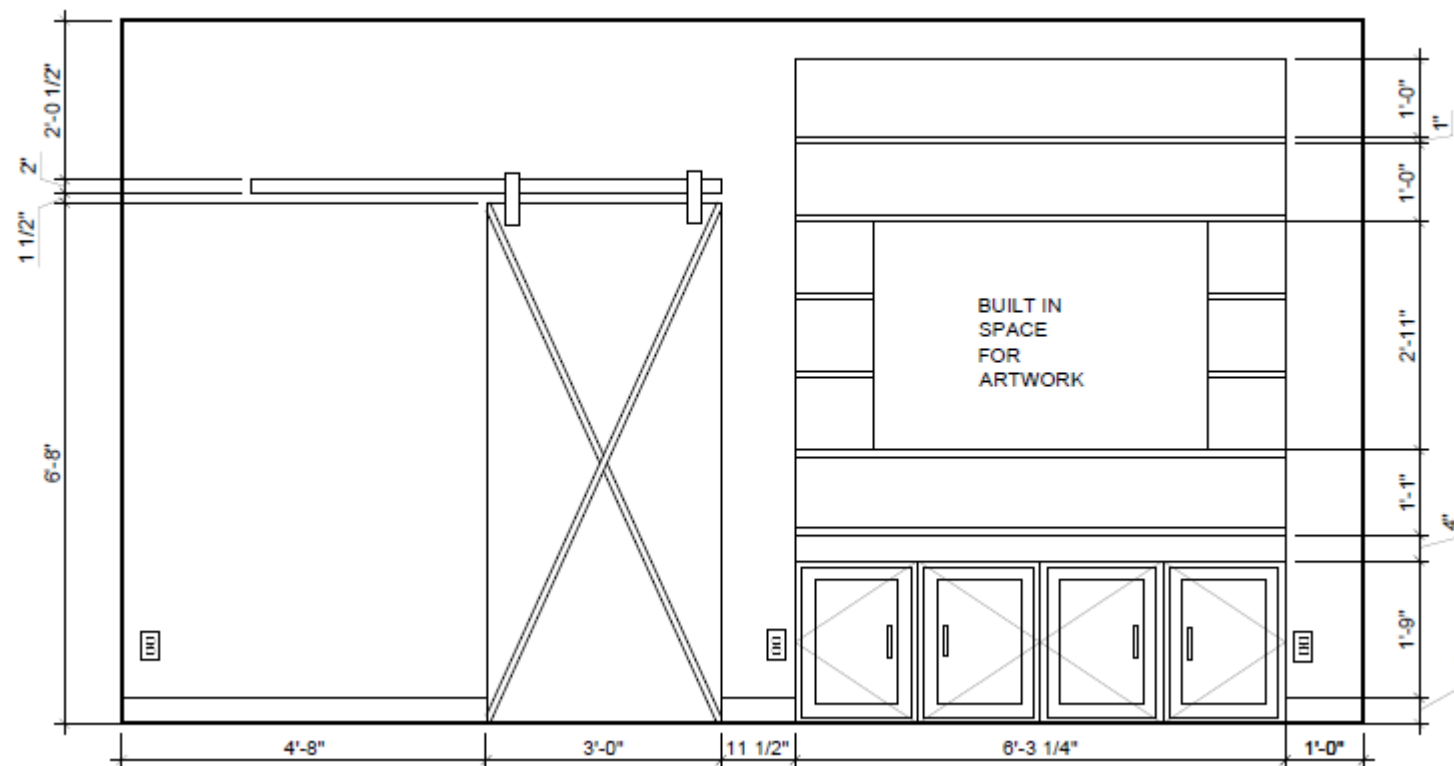




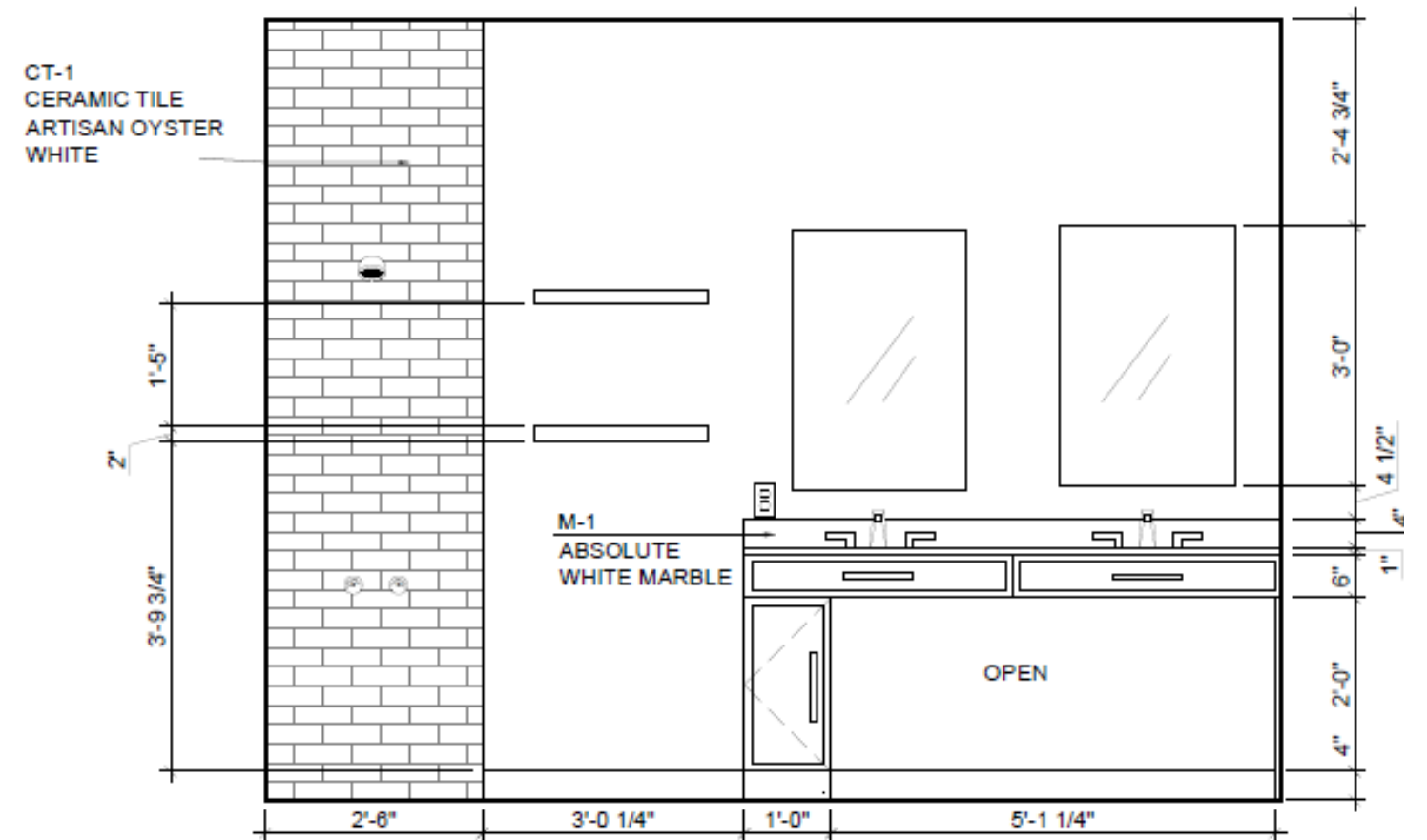
Living Room Rendering



Living Room Furniture



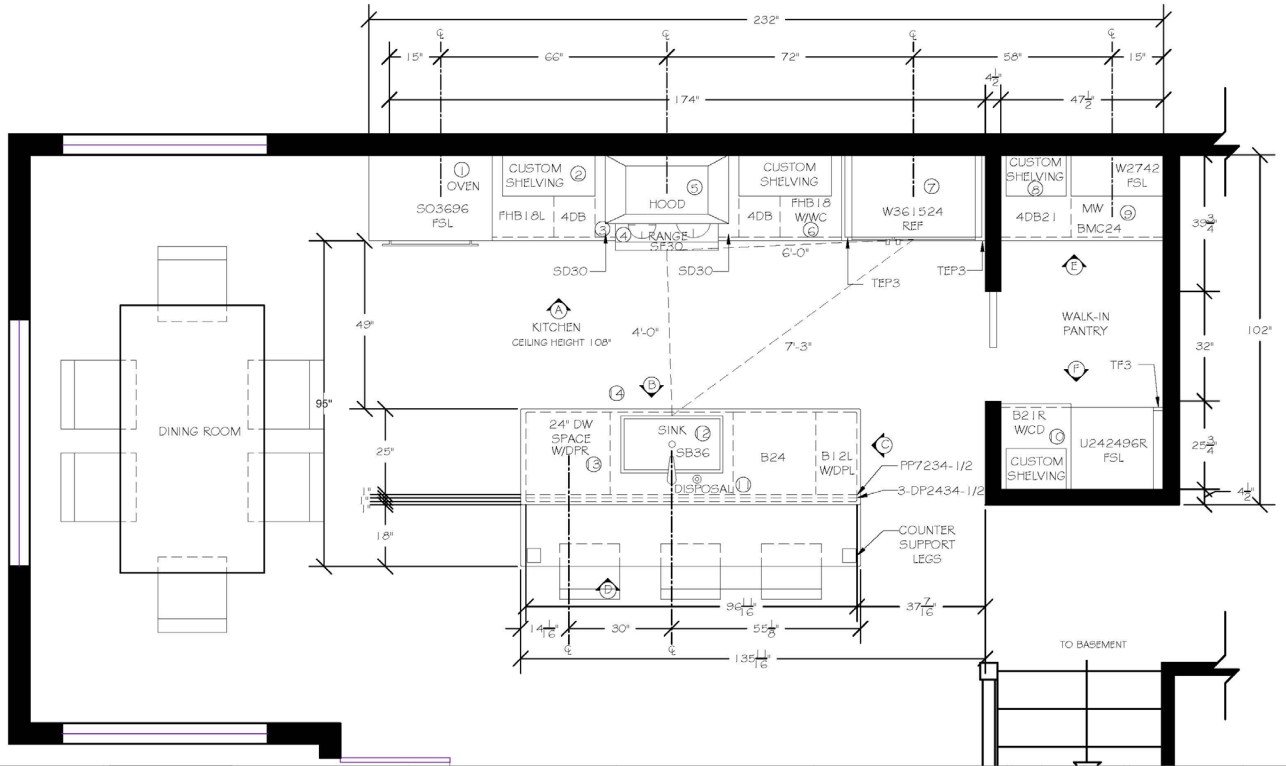
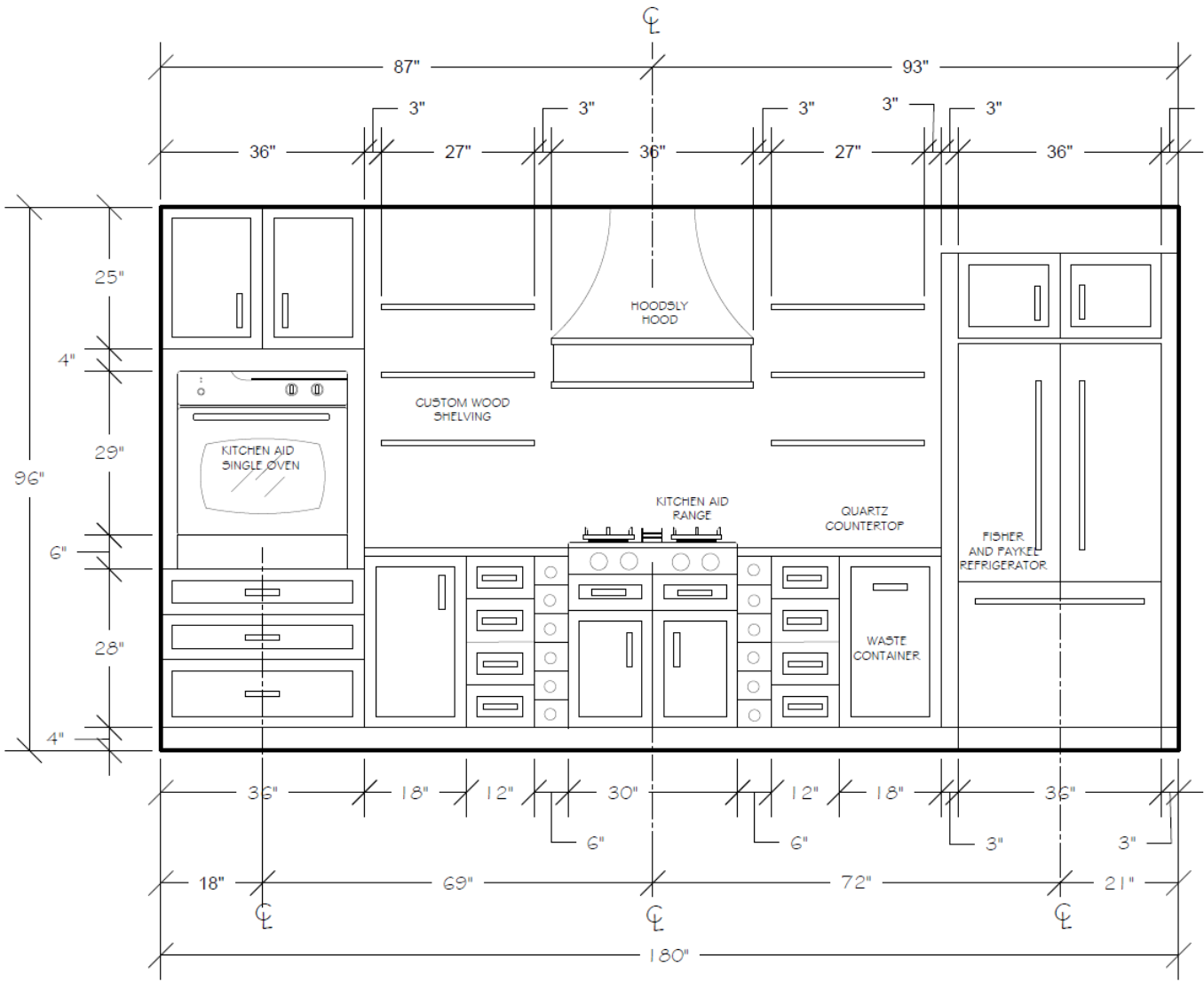
Living Room Elevation



NKBA HOME KITCHEN REMODEL

Project Summary:

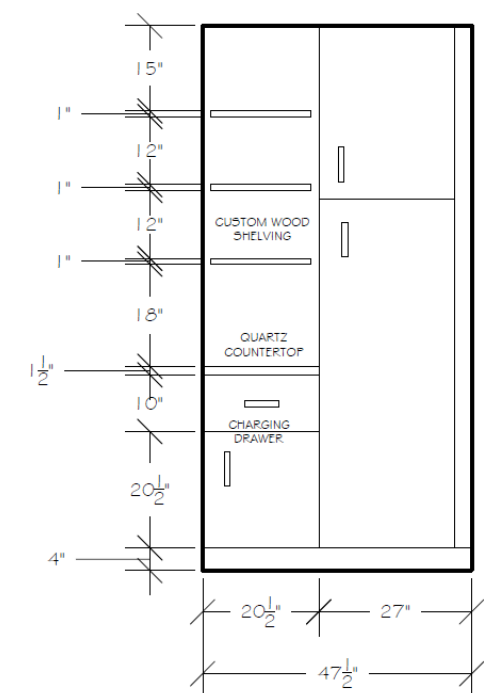
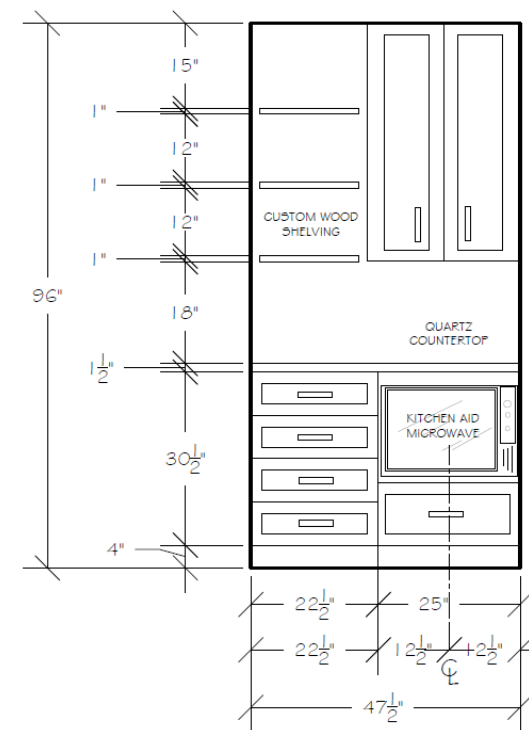
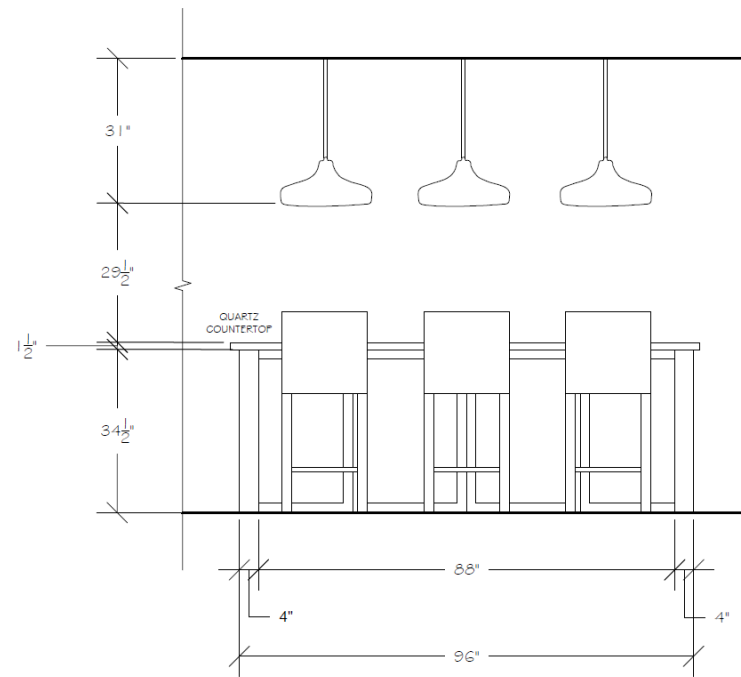
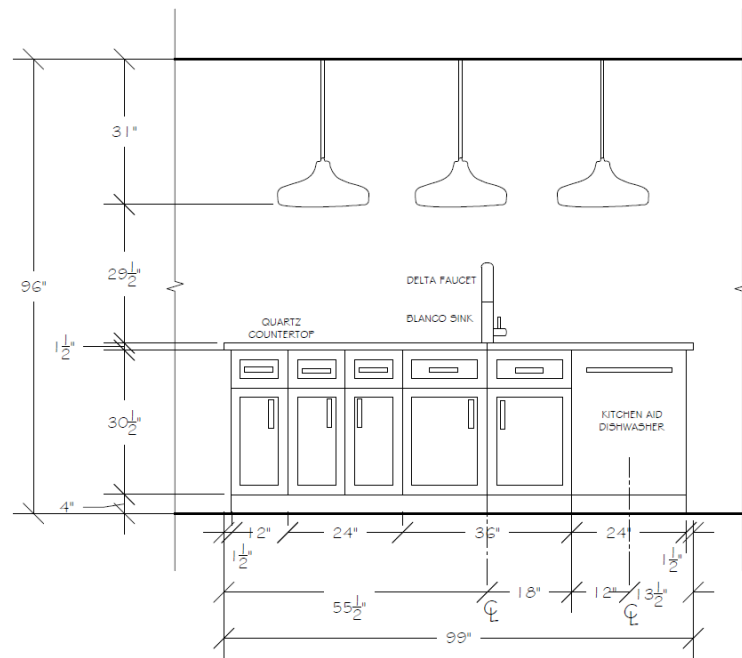
This kitchen has been remodeled to follow the NKBA Guidelines. Through the following pages, elevations will be shown that demonstrate the NKBA standards. The color palette influenced natural materials to be used for the selections.



NKBA Floor Plan

NKBA Kitchen Elevation





NKBA HOME BATHROOM REMODEL

Project Summary:

This bathroom has been remodeled to follow the NKBA Guidelines. As shown on this page, elevations and a floor plan of the space demonstrate the NKBA standards. Natural materials and colors were selected to create a spa-like atmosphere.

