

SYDNEY BROWNING PORTFOLIO



SYDNEY BROWNING

BOUNTIFUL HOUSE
RESIDENTIAL REMODEL



BOUNTIFUL HOUSE EXTERIOR



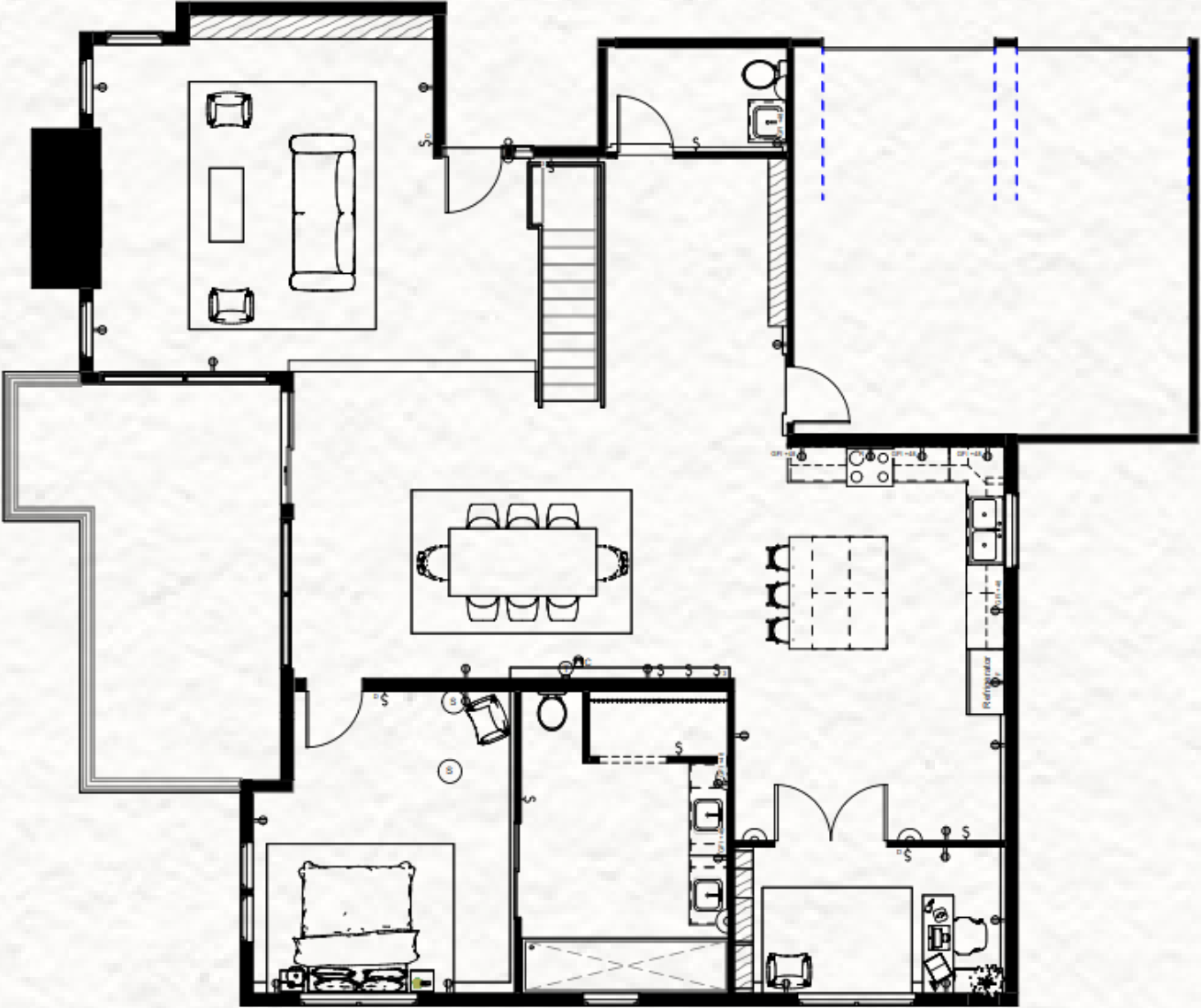
OVERALL FLOOR PLAN

The purpose of the house remodel is to create a space that promotes a comforting environment and allows the couple to age in place. An open concept will allow the couple to be able to host family and friends more often. The modern cottage design style with the use of natural materials and light will achieve the comforting and warm feeling the couple wants.

SKETCHES



FURNITURE PLANS

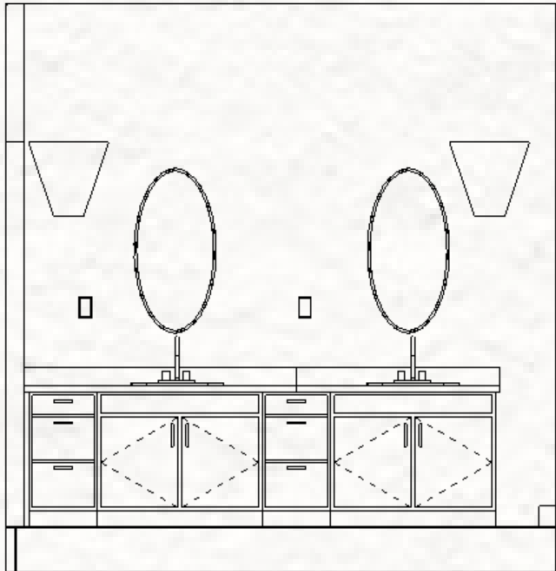


MAIN LEVEL

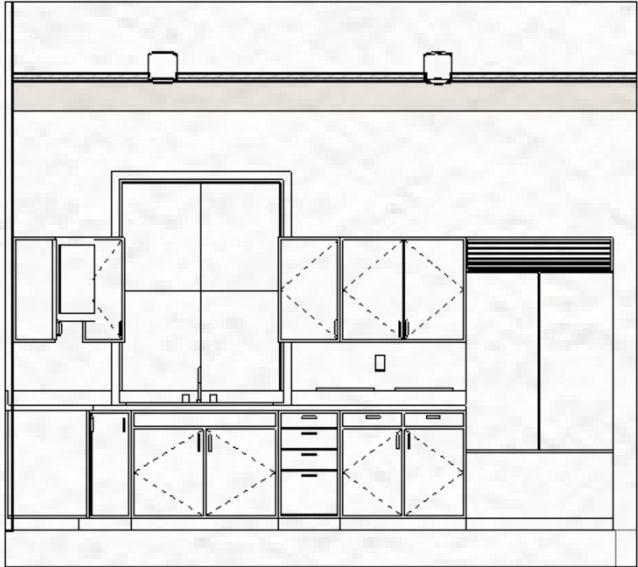


LOWER LEVEL

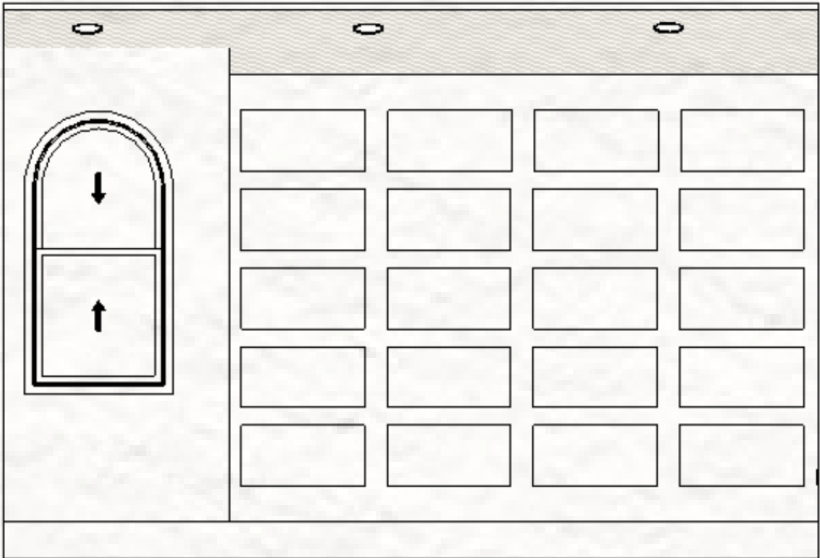
ELEVATIONS



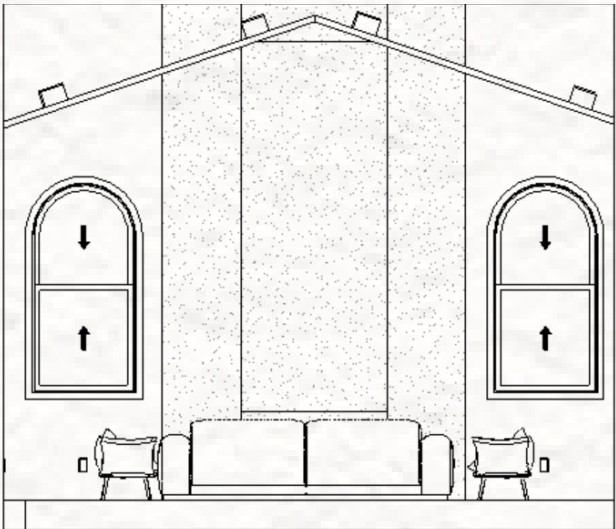
MASTER BATH



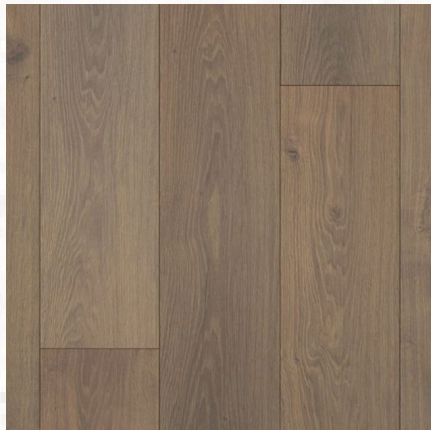
KITCHEN



NORTH-LIVING ROOM



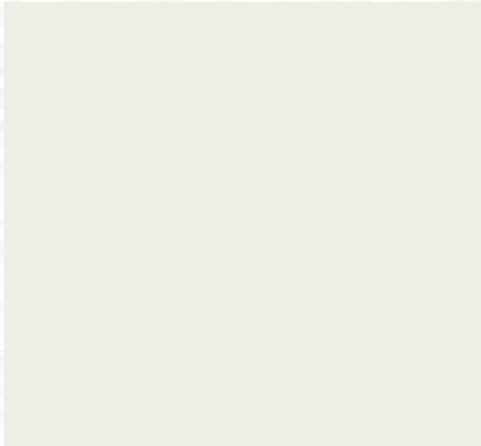
WEST-LIVING ROOM



FLOORING



CEILING



INTERIOR PAINT

LIVING ROOM

DESIGN BOARD



To achieve the welcoming and comforting feeling, warm tones along with natural materials were used in the space. A bookcase was also incorporated to showcase the couple's large book collection.

KITCHEN

DESIGN BOARD



The openness in the kitchen will allow the couple to host family and fit multiple people in the space at once. The use of a stone backsplash along with natural woods promotes a feeling of warmth.

DESIGN BOARD



The couple wanted a view of the beautiful mountains, this was achieved by placing floor to ceiling windows in the dining area. A pop of color was incorporated into the space by using a pastel blue ornamental area rug,

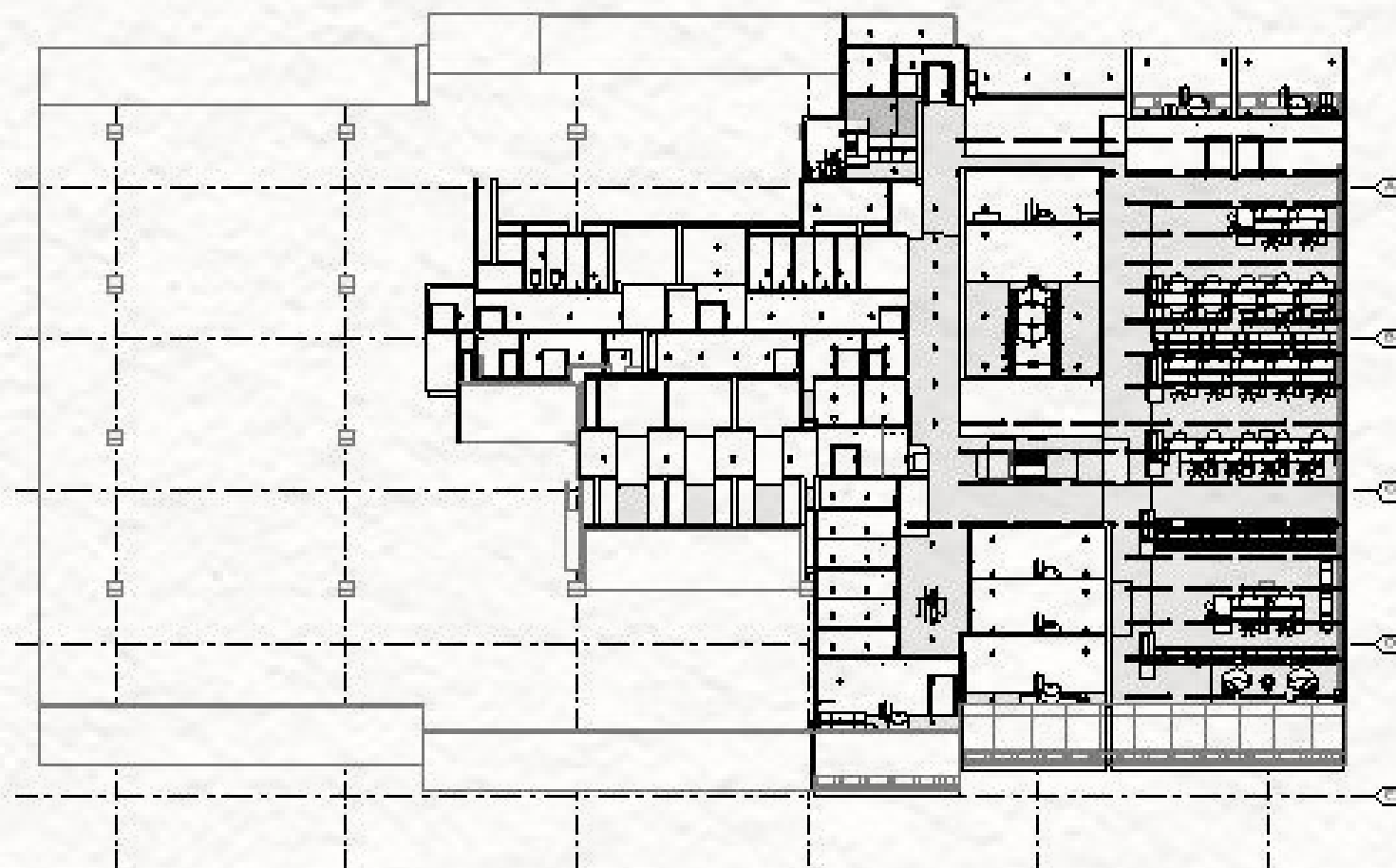
DESIGN BOARD



The couple wanted a space to display their books and read. This was achieved by doing floor to ceiling book cases with lots of space to show of their collection of books. Darker colors were used to create a cozy feeling while reading.

CHURCH OFFICE BUILDING

COMMERCIAL REMODEL

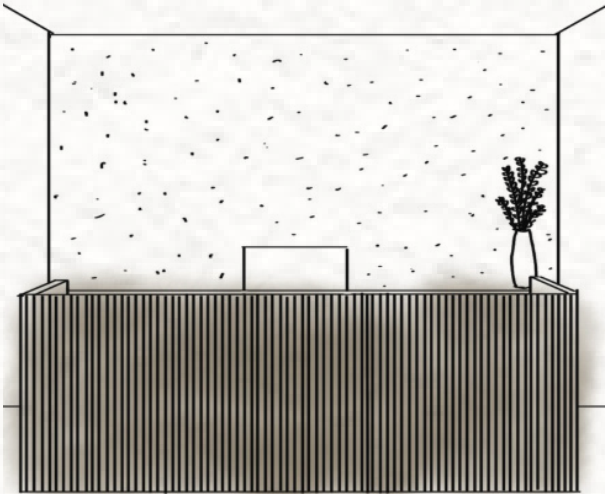
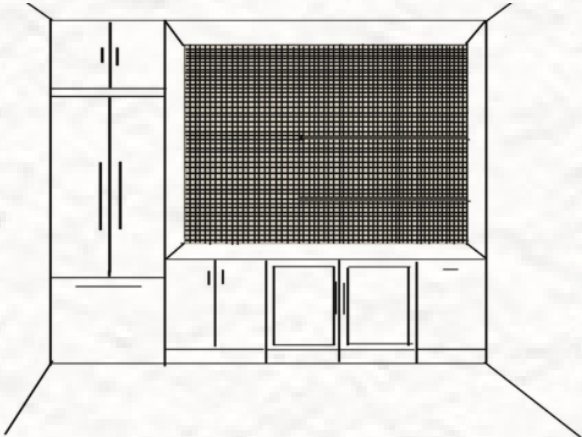
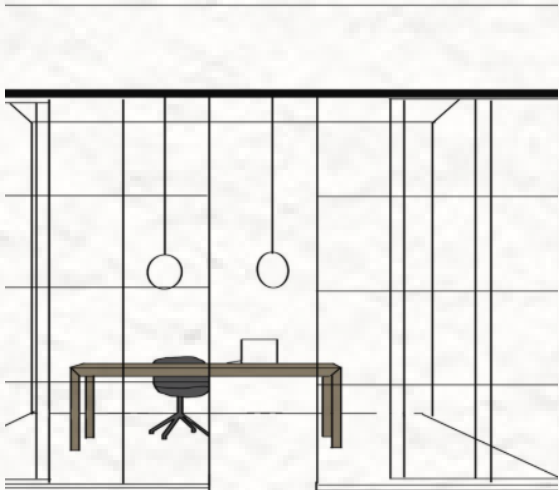


OVERALL FLOOR PLAN

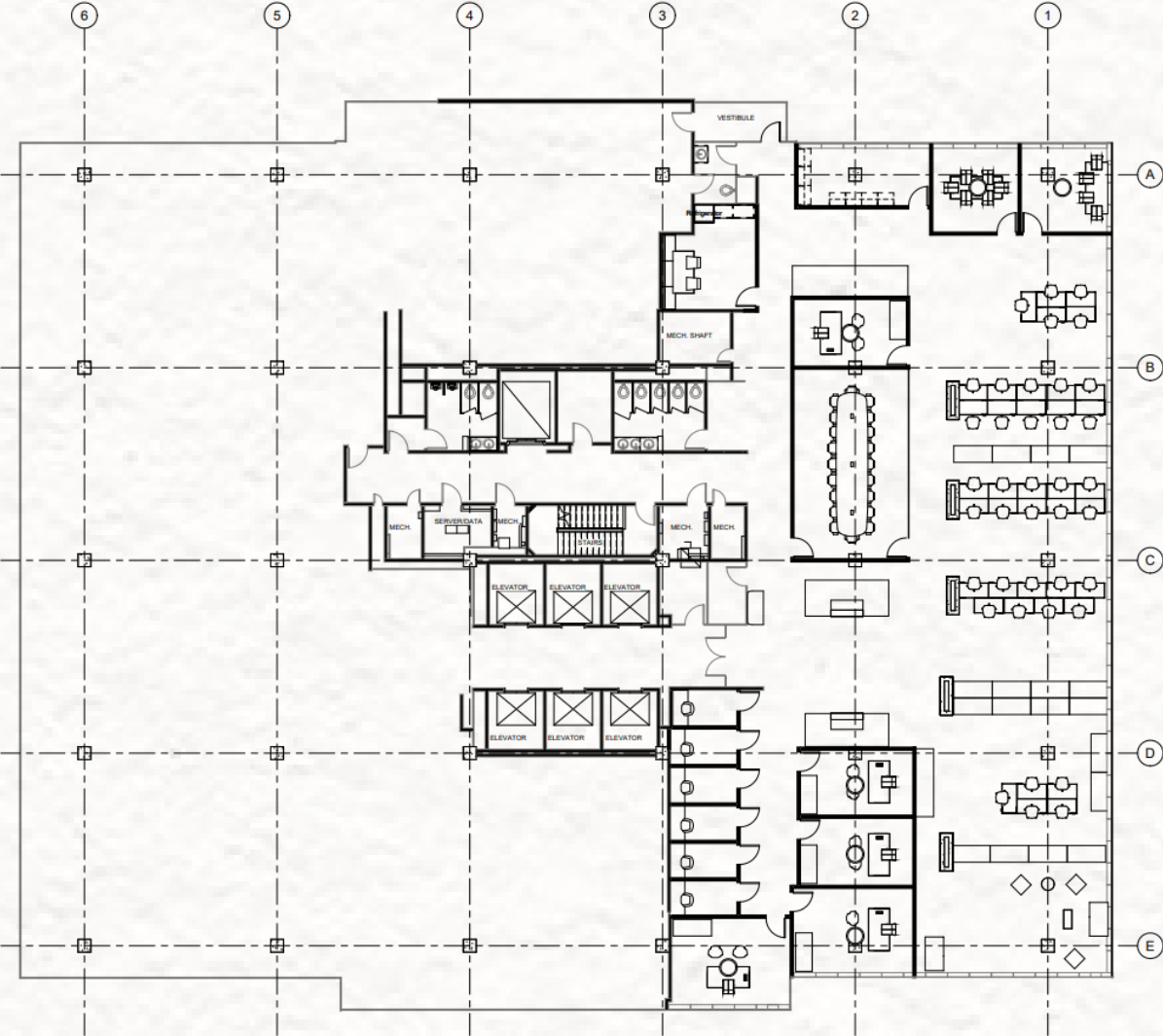


The Church of Jesus Christ of Latter-Day Saints is remodeling half of the 7th floor in the Church Office Building. This remodel will create a cohesive space for hybrid work. It will also support the wellness of the employees. We will be taking advantage of the natural light and materials like wood and concrete to enhance creativity and productivity, as well as provoke the feeling of openness.

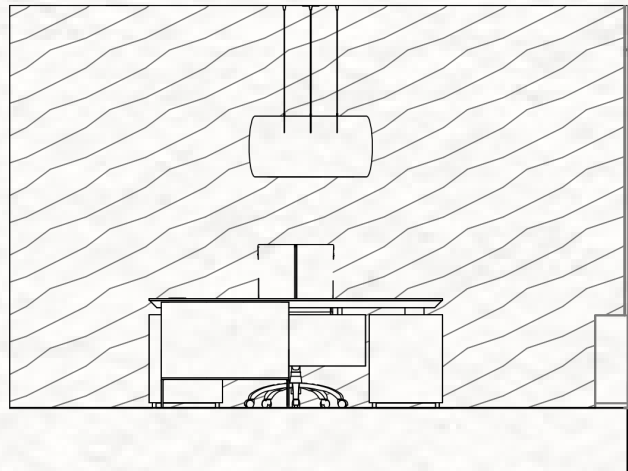
SKETCHES



FURNITURE PLAN



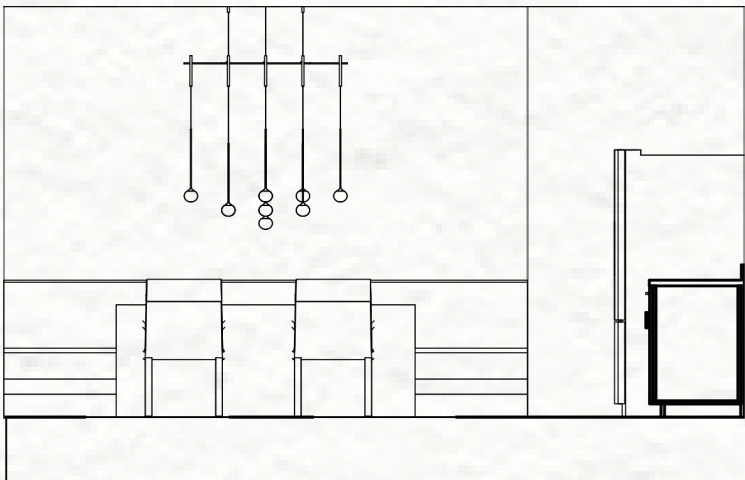
ELEVATIONS



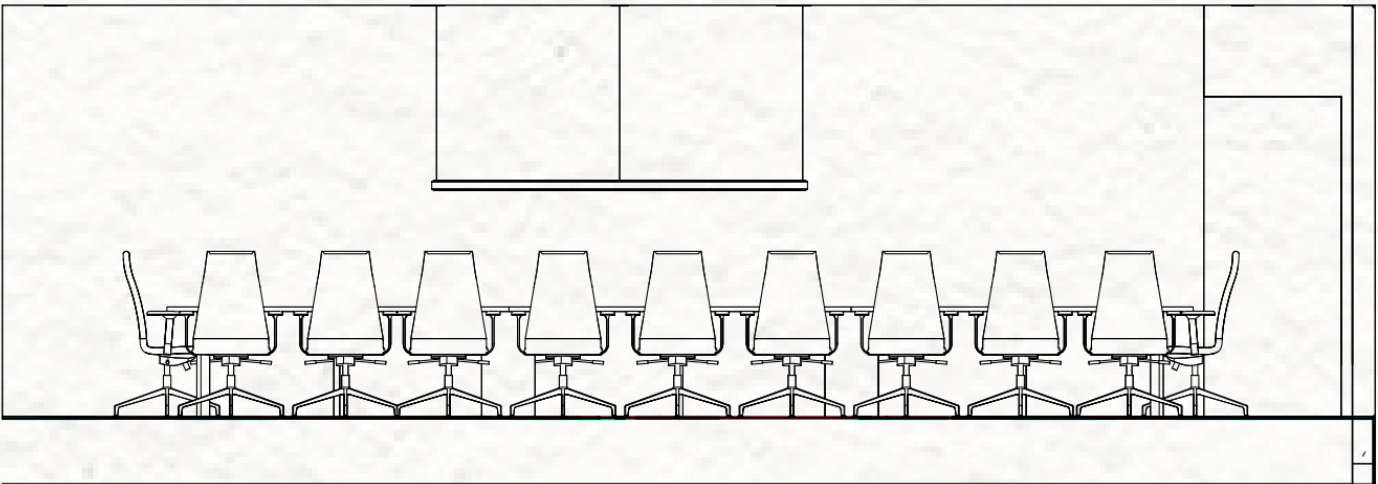
DIRECTORS OFFICE



LOUNGE



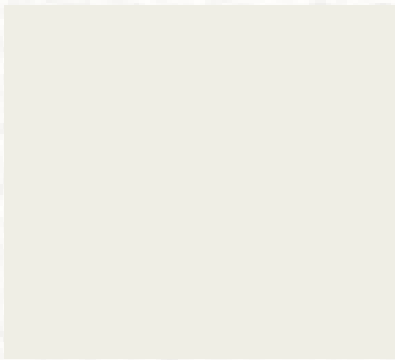
BREAK ROOM



CONFERENCE ROOM



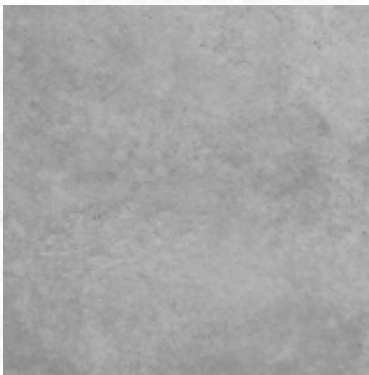
FLOORING



INTERIOR PAINT



ACCENT WALL



CONCRETE

CONFERENCE ROOM

DESIGN BOARD



The use of natural materials and colors were used in the space to promote creativity and enhance productivity.

BREAK ROOM

DESIGN BOARD



The warm neutral tones were used in this space to create a warm comforting feeling with a pop of color used through the burnt orange in the booth seating.

DIRECTORS OFFICE

DESIGN BOARD



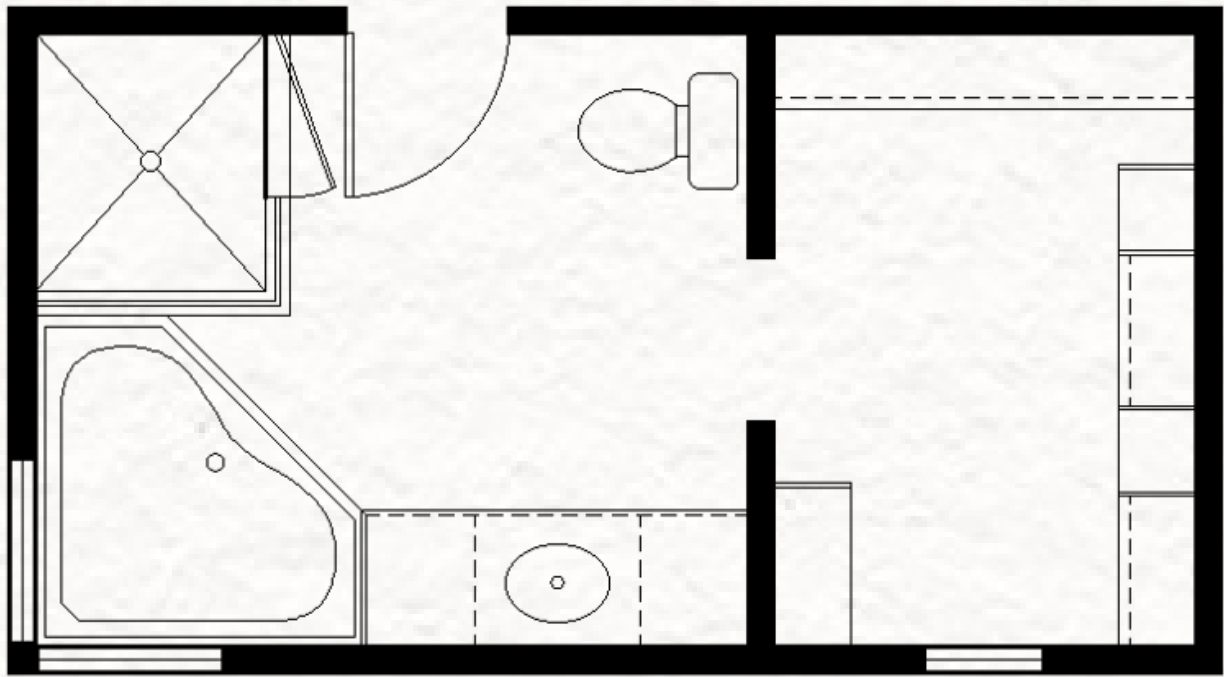
The use of natural light in the space promotes productivity and creativity. The focal point of the space being the wood panel wall draws your eyes to where the director will be sitting.

LOUNGE AREA—WEST SIDE

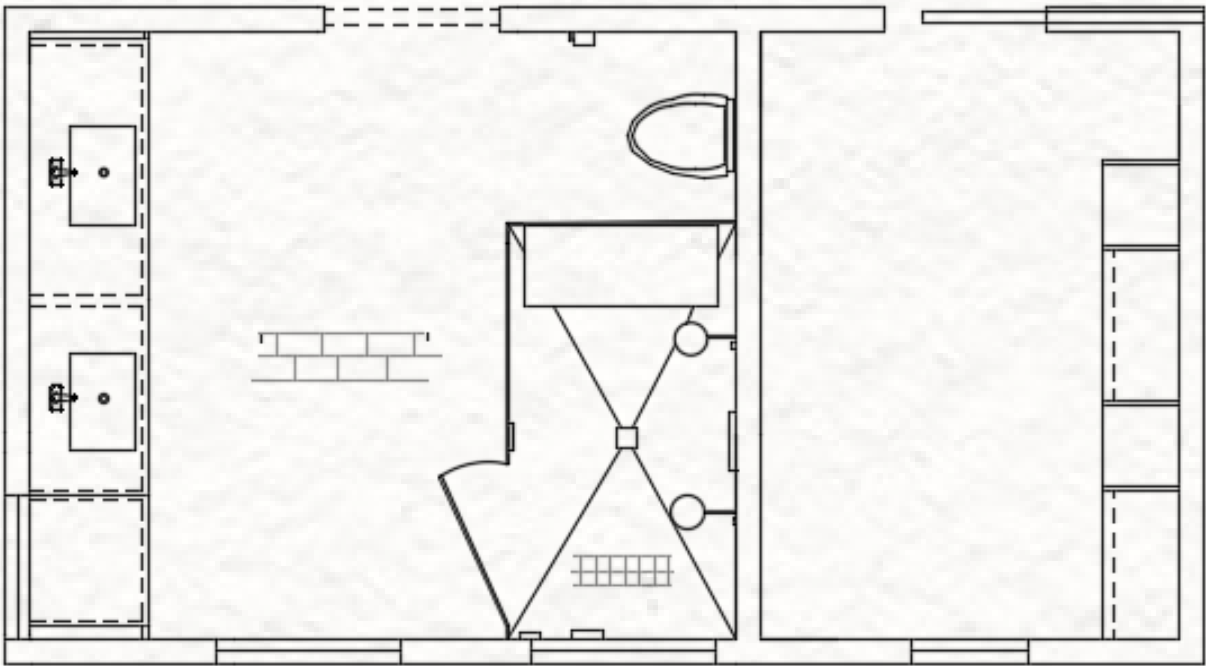
DESIGN BOARD



NKBA BATHROOM REMODEL



BEFORE PLAN



FINAL FLOOR PLAN

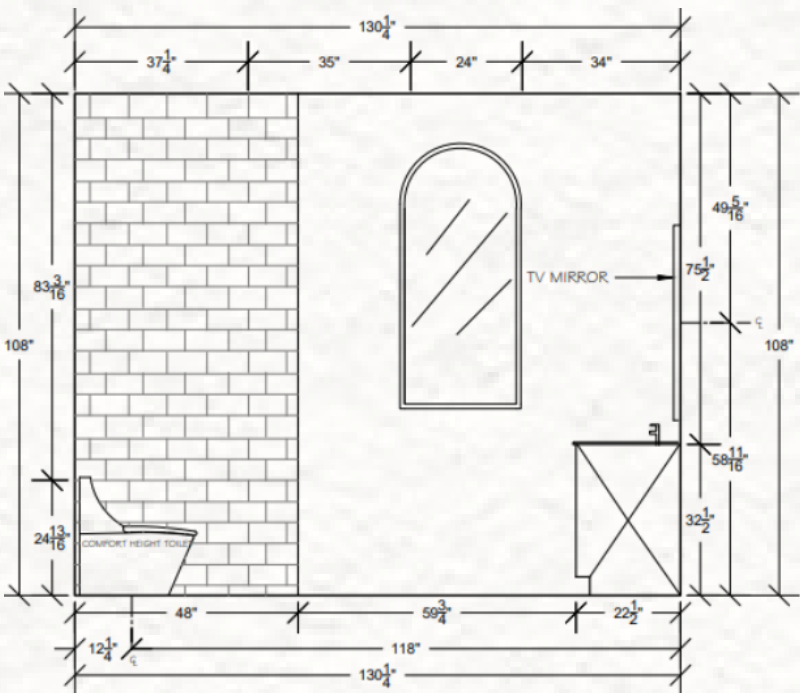
PROJECT DESCRIPTION

This older couple is wanting to remodel their bathnroom to make it so they are able to age in place. They wanted to have a natural organic design style and the use of natual light.

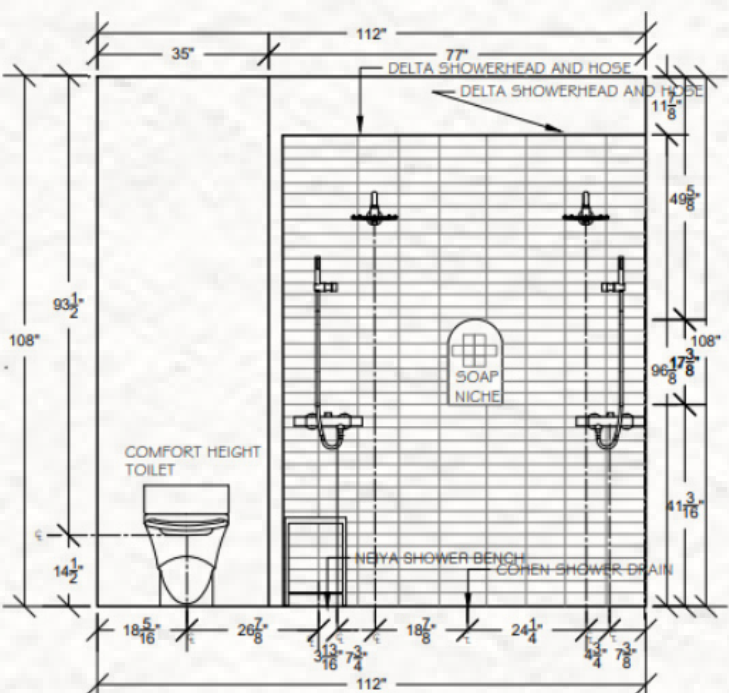
CONCEPT IMAGES



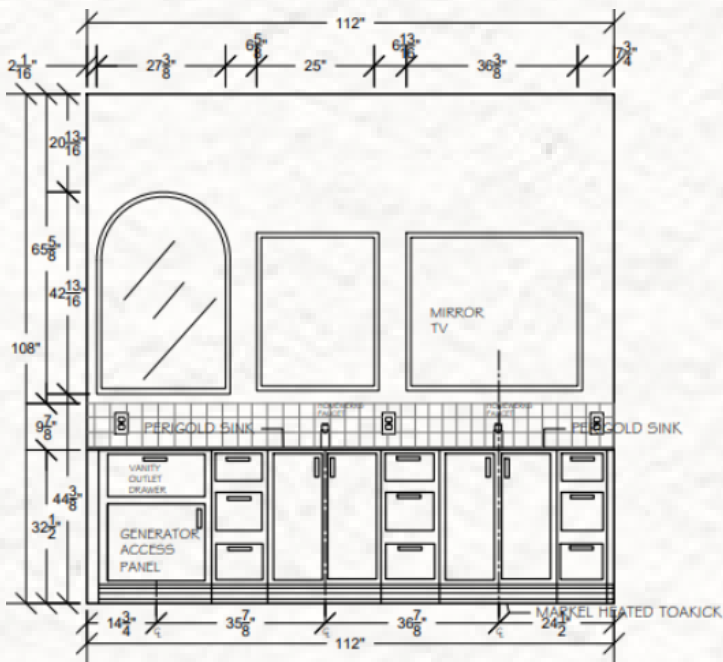
ELEVATIONS



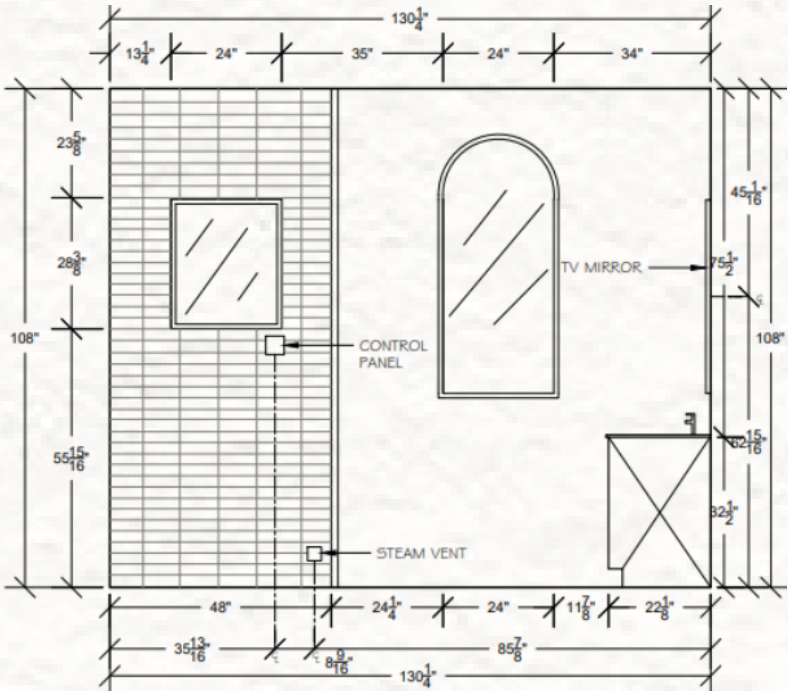
NORTH ELEVATION



EAST ELEVATION



WEST ELEVATION

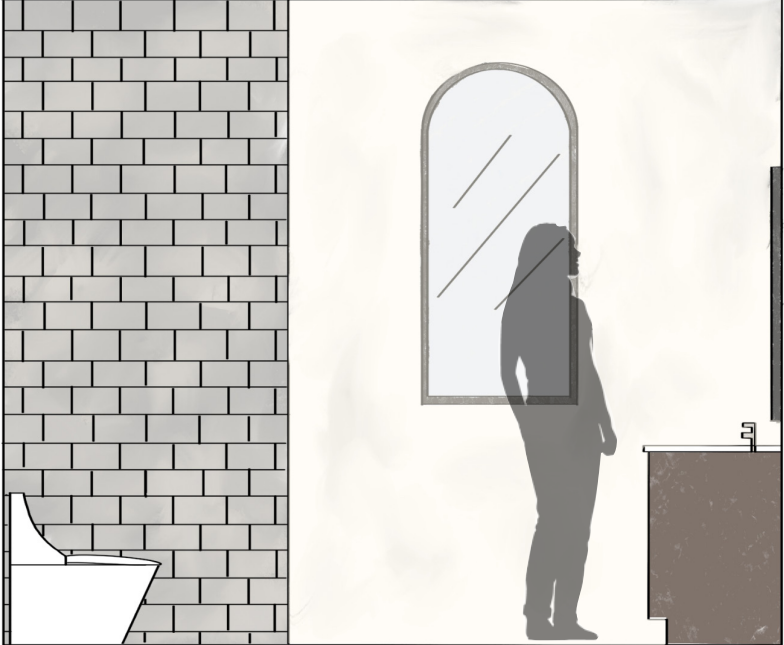


SOUTH ELEVATION

DESIGN BOARD



RENDERINGS



The couples requests were met by using natural materials and colors throughout the space. A pop of color was used on the shower wall tiles and backsplash along with texture used on the walls through plaser.