

PORT

FEO

LIO

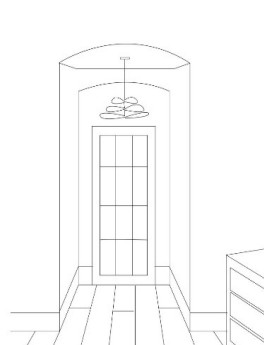
AMY RUBIO

ENSIGN COLLEGE  
INTERIOR DESIGN AAS  
SELECTED WORK 2023 - 2025

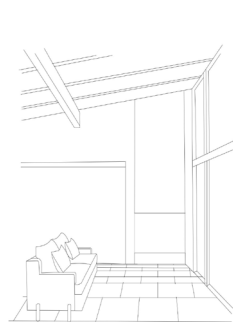
# THROUGH THE FRAME

## Mid-Century Modern Residence

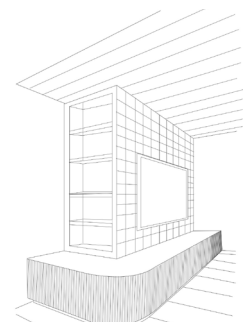
This home was designed around the principle of **“framing the view.”** The architecture and interiors celebrate natural light, clean lines, and connection to the outdoors. Expansive windows invite sunlight deep into the space, creating a dynamic play between interior and exterior. Warm wood tones and refined finishes balance minimalism with comfort, resulting in a home that feels both modern and inviting.



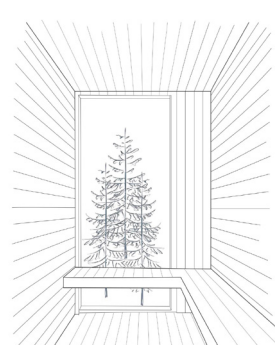
Arched Openings



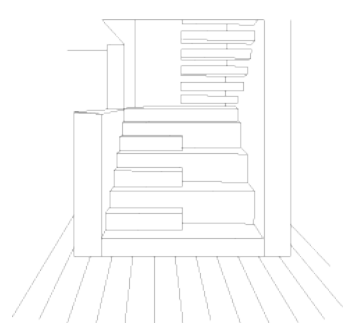
Natural Light



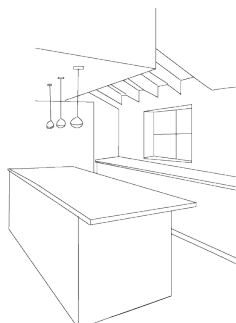
Materials: Wood + Tile



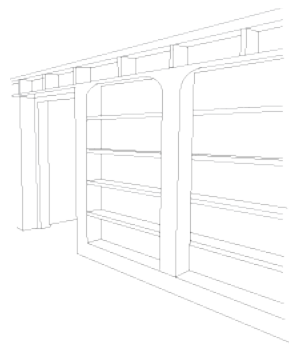
Framing the view concept



Statement Staircase



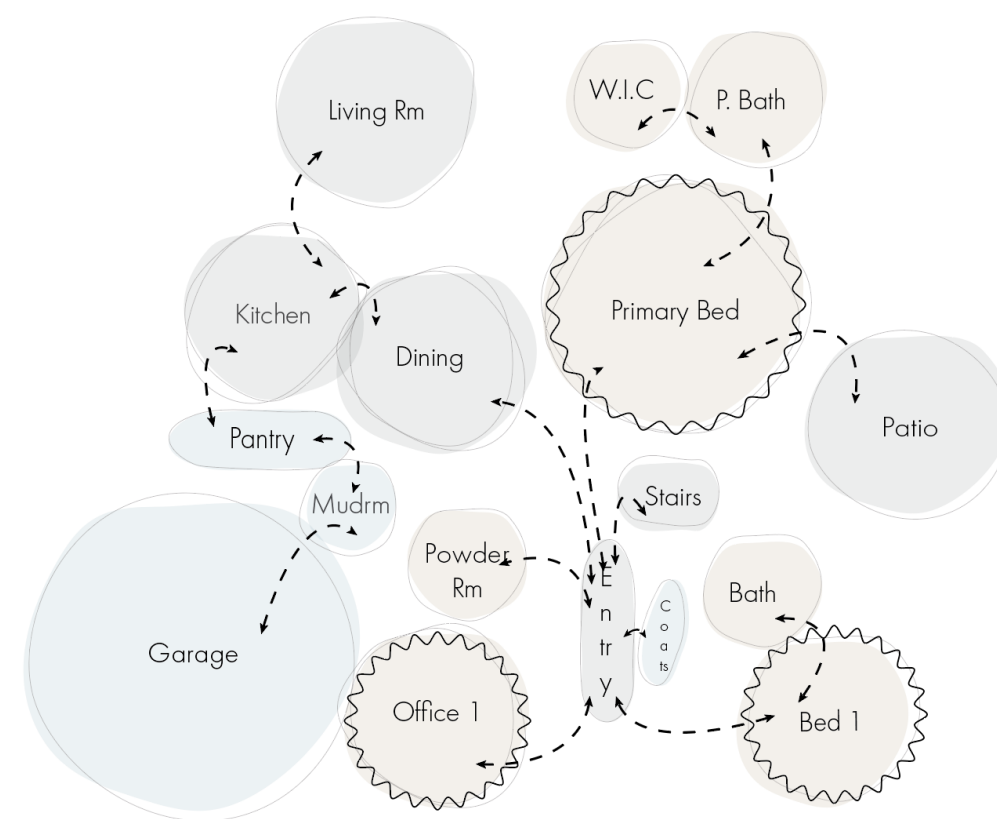
Vaulted Wood Ceilings



Built-in Cabinetry



Maximizing Outdoor Views



The space planning focuses on **comfort, flow, and function**, emphasizing open circulation and uninterrupted sightlines that draw the eye toward framed exterior views. Circulation paths are intentionally simple and direct, creating a cohesive layout that supports daily living. The result is a layout that feels fluid, balanced, and deeply connected to its surroundings.



**Simplicity, functionality, and warmth.** A neutral palette with textural layers enhances the sense of calm, while mid-century furnishings ground the design in timeless sophistication.





*Living Room and Kitchen Cross Section*

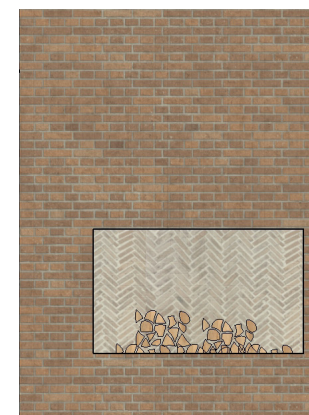
The **living room** embodies the “framing the view” concept with expansive windows that draw the outdoors in. Mid-century furnishings, layered textures, and warm wood tones create a cozy yet sophisticated atmosphere. Natural light and open sightlines make the space feel grounded, welcoming, and connected to its surroundings.



*“Framing the View” Concept*



*Living Room Clay*



*Fireplace Detail*

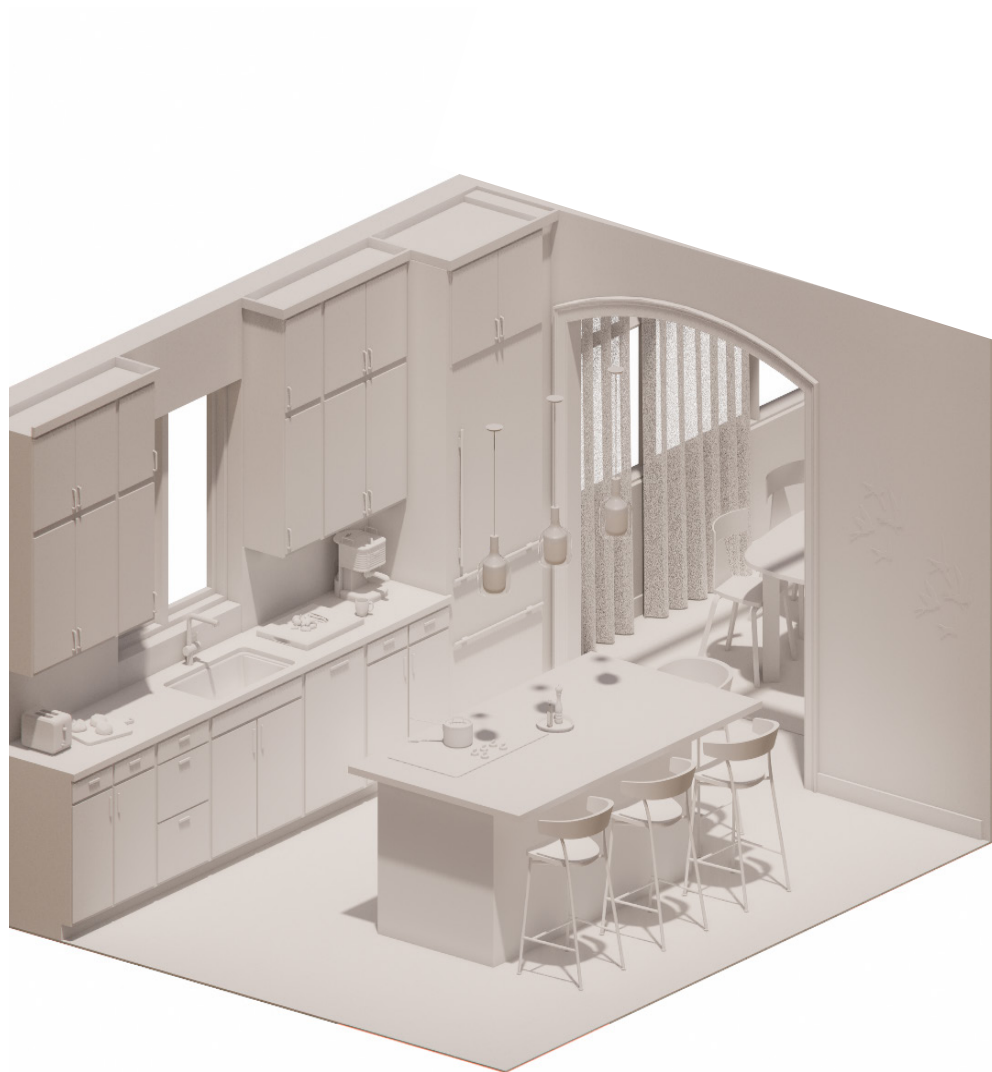


*Living Room Render*





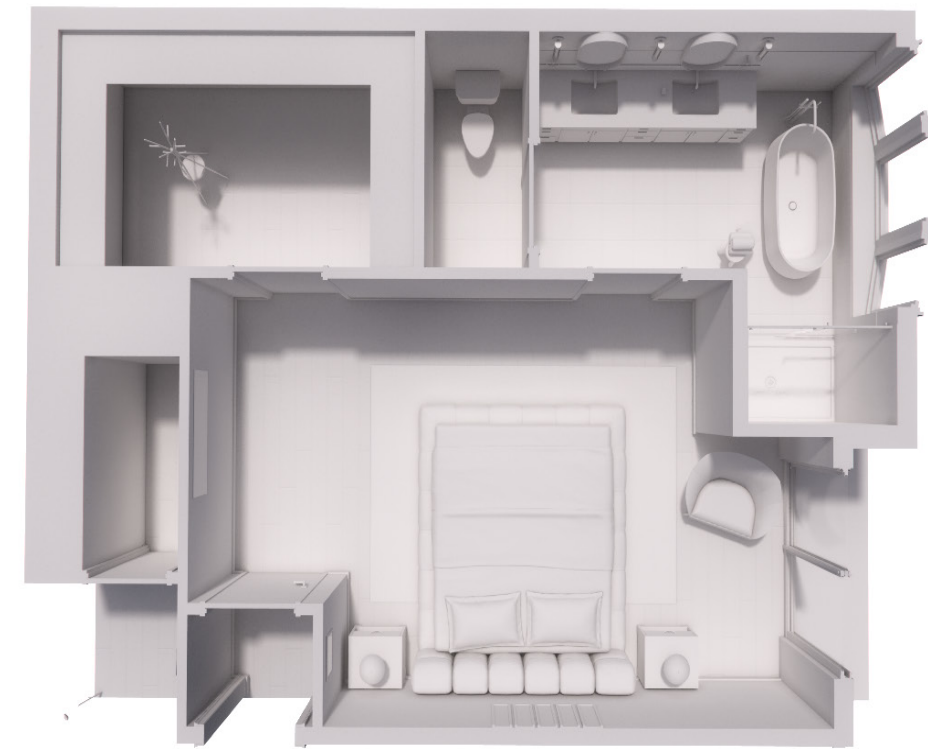




The **kitchen** layout promotes smooth flow between cooking, dining, and gathering areas while maintaining efficient work zones. Warm wood cabinetry, quartz countertops, and a soft tile backsplash create a balanced, timeless look that feels both functional and inviting.







The **primary bed wing** offers a serene retreat defined by natural light, warm textures, and a refined mid-century palette. A seamless connection between bedroom and bath enhances comfort and flow, creating a private space that feels both elegant and restorative.

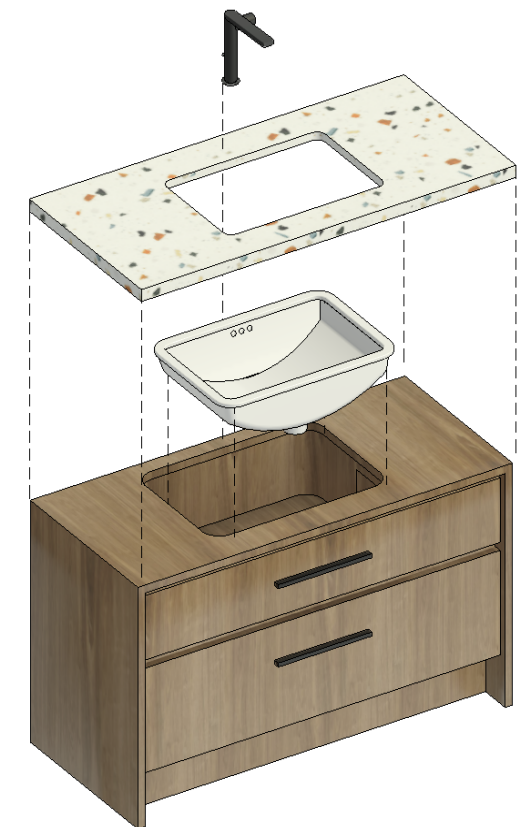




The **dining room** continues the home's connection to nature through large windows that frame exterior views and fill the space with light.



Clean lines, warm wood finishes, and minimal details create a setting that feels both elegant and intimate





# ROOTS AND RENEWAL

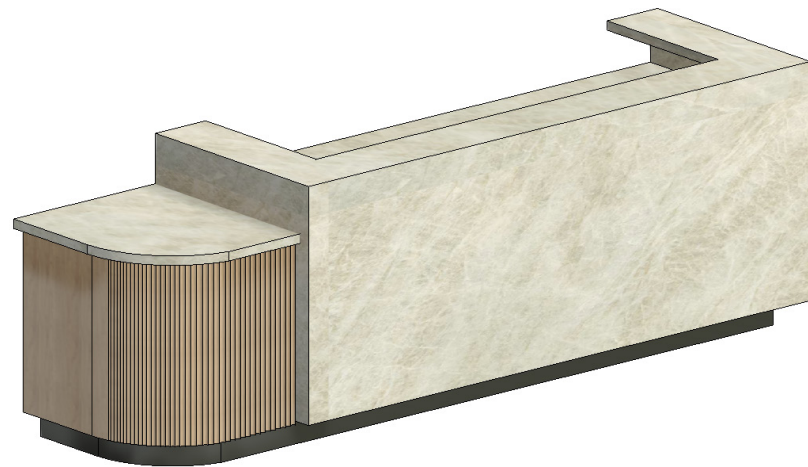
## Joseph Smith Memorial Building, 5th Floor



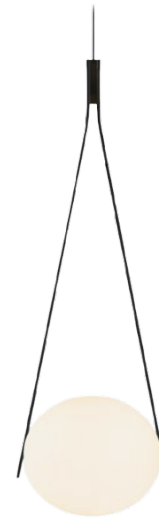
Natural materials and light wood tones refresh the building's **traditional character with a modern, nature-inspired touch**. Mosaic floors, greenery, and warm metals blend heritage with contemporary design, creating a space that feels timeless yet renewed.







*Front Desk Detail*

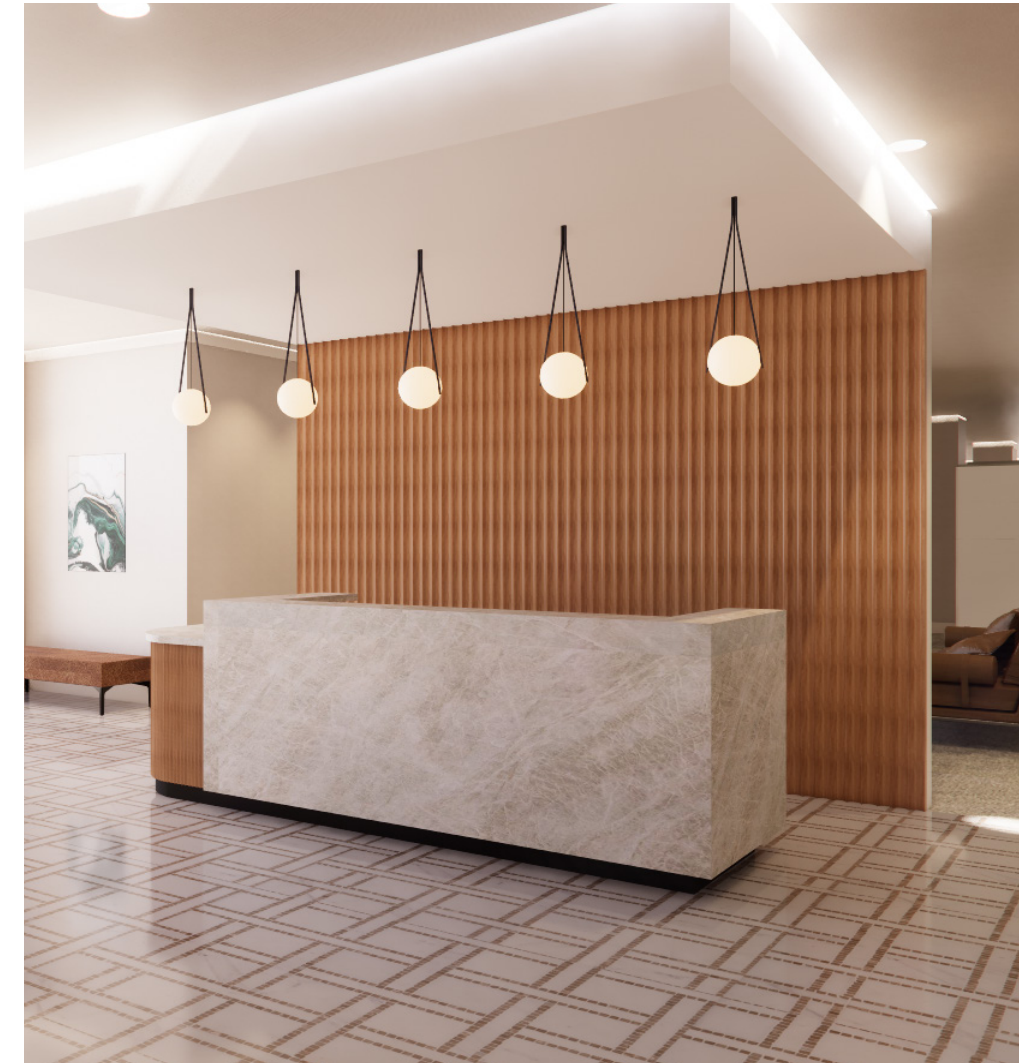


*Pendant*

The **reception area** serves as the welcoming focal point of the fifth-floor remodel. A custom reception desk in light wood tone and stone anchors the space, complemented by mosaic flooring that nods to traditional craftsmanship.



*Reception View*



Soft lighting, refined detailing, and natural textures create an atmosphere that feels both dignified and inviting — a harmonious blend of heritage and renewal.













Glass paneling connects the **meeting room** visually to surrounding spaces while maintaining an open, light-filled atmosphere. The art pieces bring texture and cultural depth, complementing the building's historic character. Contemporary furniture with clean lines and soft upholstery balances professionalism with comfort, reinforcing the project's goal of merging tradition with modern sophistication.







*Materials & Selections*

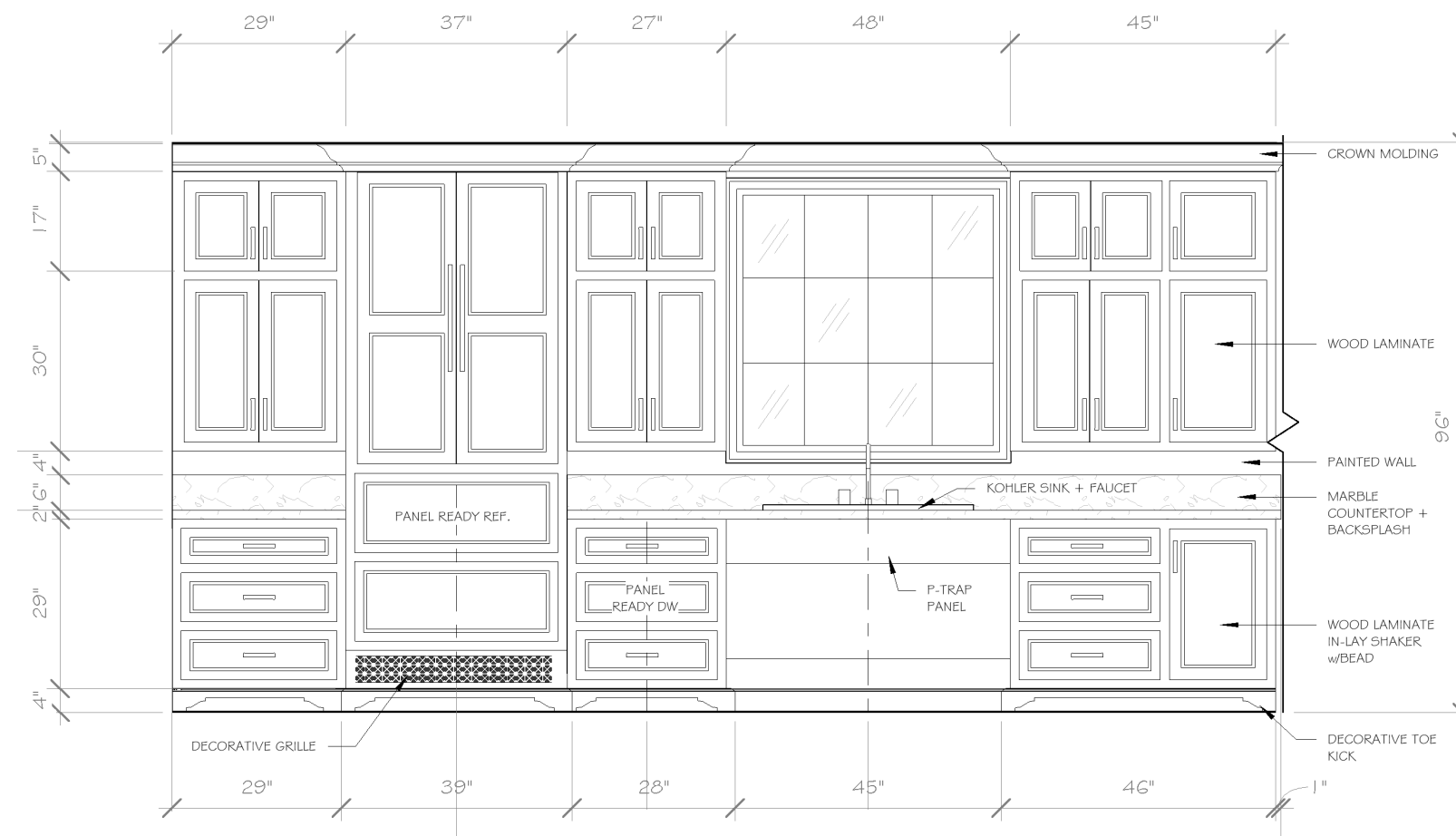


# COMFORT IN MOTION

ADA-Compliant Residence



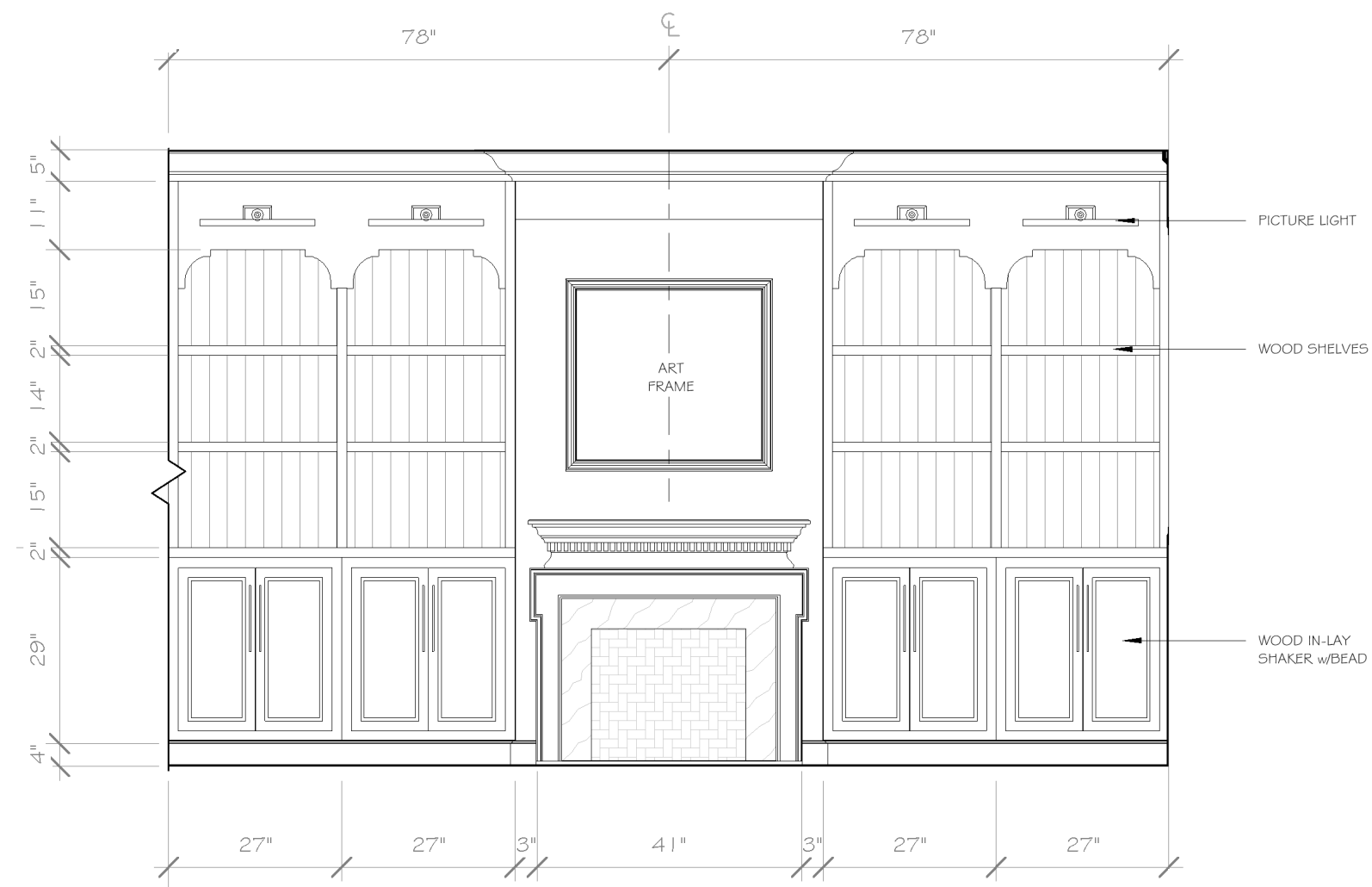




The **kitchen** balances universal design with timeless style. Lowered surfaces, open circulation, and accessible storage enhance ease of use for the ADA user. Cabinet doors feature an in-lay shaker with bead in wood laminate complemented with panel-ready appliances for a continuous look.



Warm wood cabinetry and light quartz finishes maintain visual harmony. This space exemplifies how practical design can remain elegant and uplifting.



The **living room** continues the home's open, barrier-free flow, offering flexible furniture arrangements and abundant natural light. The accent wall features a fireplace surrounded by built-in cabinetry.



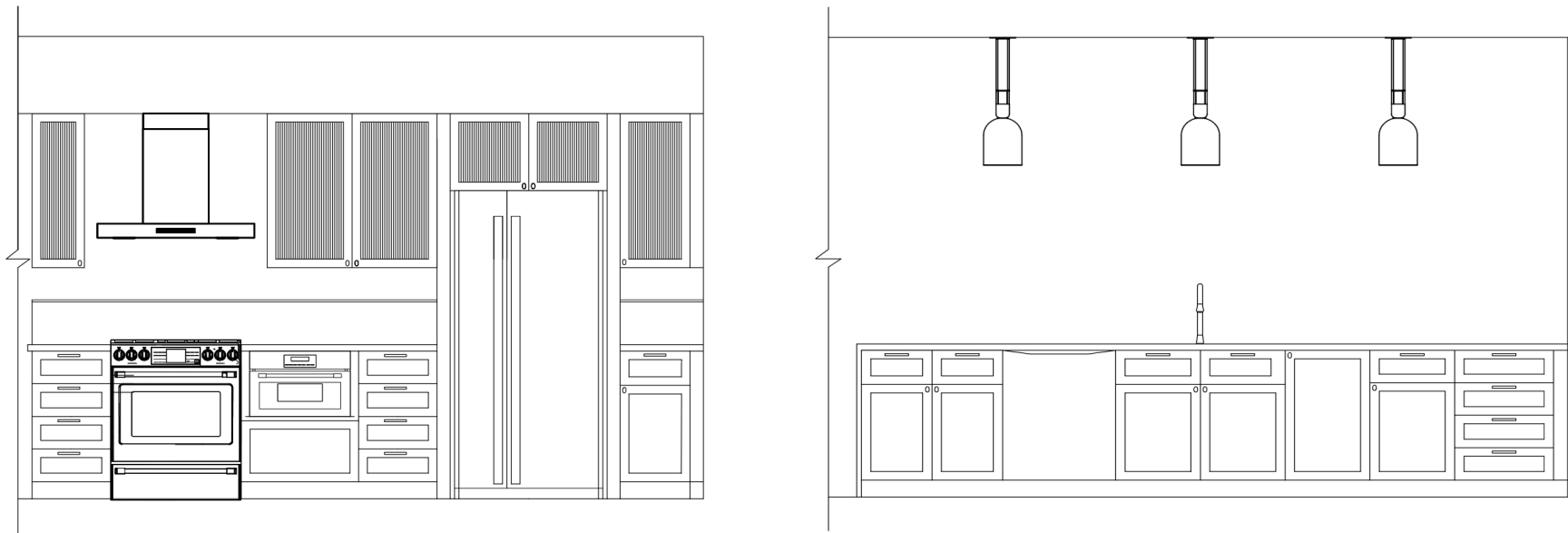
Layered textures and soft materials bring warmth and comfort, supporting both relaxation and accessibility.





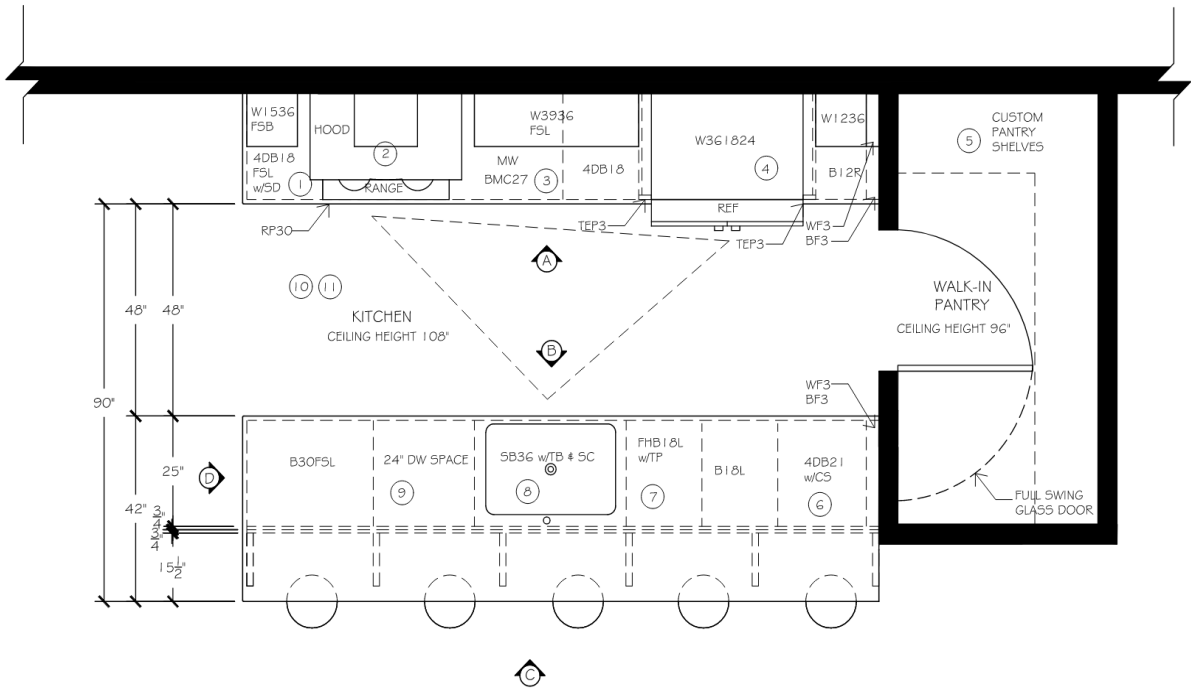
# BRASS AND WALNUT

## Transitional Kitchen Renovation



Elevation 'A'

Elevation 'B'



Floor Plan

### FLOOR PLAN SPECIFICATIONS

- 4DB18 FSL w/ SPICE RACK REV-A-SHELF, #45DI-1-0 WOOD SPICE DRAWER INSERT 16W x 20 D x 1-3/4 H 6TH CLEAR POLYURETHANE
- VENTILATION THERMADOR, HDDB3GWS, MASTERPIECE DRAWER CHIMNEY WALL HOOD 36" L x 15 1/2" W x 18 3/4" D x 42" H 600 CFM STAINLESS STEEL RANGE SAMSUNG, NE63BB8711121AA, BESPOKE 6.3 CU. FT. SMART SLIDE-IN ELECTRIC RANGE 29 1/2" W x 20 1/2" D x 36 3/4" H WHITE GLASS
- MICROWAVE THERMADOR, MD24W5, MICRODRAWER® MICROWAVE 24" 16 1/2" H x 23 1/2" W x 23 3/8" D STAINLESS STEEL
- REFRIGERATOR THERMADOR, T3GFTB101S, FREEDOM® FREESTANDING FRENCH DOOR BOTTOM MOUNT REFRIGERATOR 36" MASTERPIECE® 72" H x 36" W x 25" D STAINLESS STEEL
- CUSTOM PANTRY SHELVES 5 L-SHAPE SHELVES 18"D AND 15"D WHITE MELAMINE
- 4DB21 w/CHARGER STATION REV-A-SHELF, WCD8-18HFLSC-1-USB, CHARGING DRAWER, 16 1/2" W x 23 3/4" D x 4 1/8" H LIGHT BROWN
- FHB18L w/TRASH PULL OUT REV-A-SHELF, 5349-18CKGR-2, ALUMINUM BOTTOM MOUNT COMPO+ PULLOUT W/SOFT-CLOSE, 14 3/8" W x 22 1/2" D x 19 1/4" H SILVER
- SINK KOHLER, RH6437-1-CM1 KENNON 33 IN. 1- HOLE UNDERMOUNT SINGLE BOWL GRANITE COMPOSITE KITCHEN SINK 33L x 22W x 10" D MATTE BLACK FAUCET KOHLER, K-22972-VS PULL-DOWN KITCHEN SINK FAUCET WITH THREE-FUNCTION SPRAYHEAD VIBRANT STAINLESS
- DISHWASHER SAMSUNG, DW60CG4021SRAA 53 DBA FINGERPRINT-RESISTANT DISHWASHER WITH ADJUSTABLE RACK 24 1/2" W x 33 3/4" H x 24 3/8" D STAINLESS STEEL
- TK-8 (4) PIECES
- 3CM-8 (2) PIECES



Materials & Selections



# THE CLASSIC TOUCH

## Traditional Bathroom Design



Materials + Finishes



Rendering



Vanity Composition