

# Kami Hatch

INTERIOR DESIGN

as a designer, artist, and illustrator,  
I joy in the work of creating  
beauty, wellness and efficiency  
in all aspects of the spaces we  
live, worship, work, rest and play

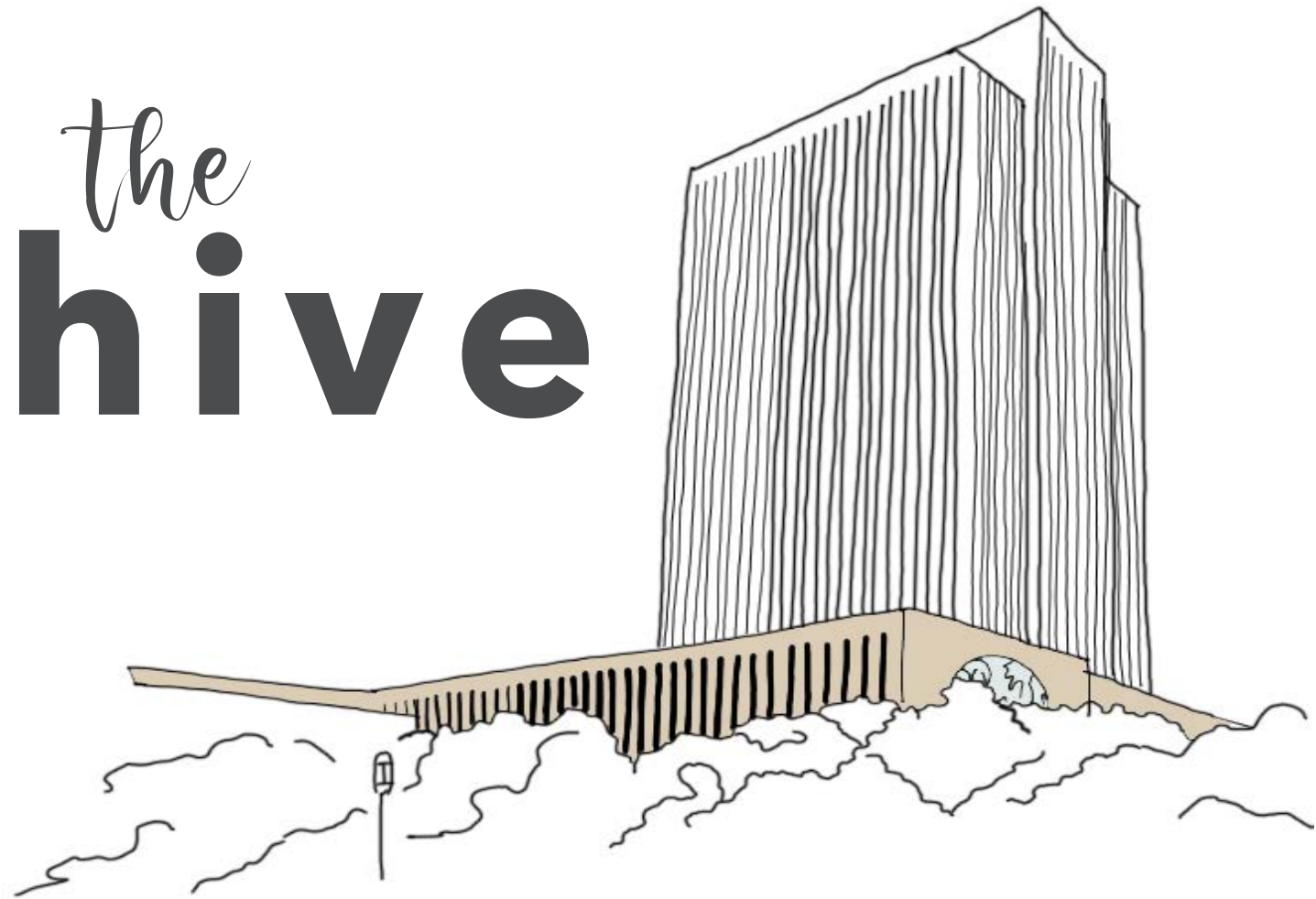


life span of the artist - illustration by kami hatch



Self Portrait, Charcoal on Paper, 18"x24"

# the hive



Project created in Revit

## PROJECT DESCRIPTION

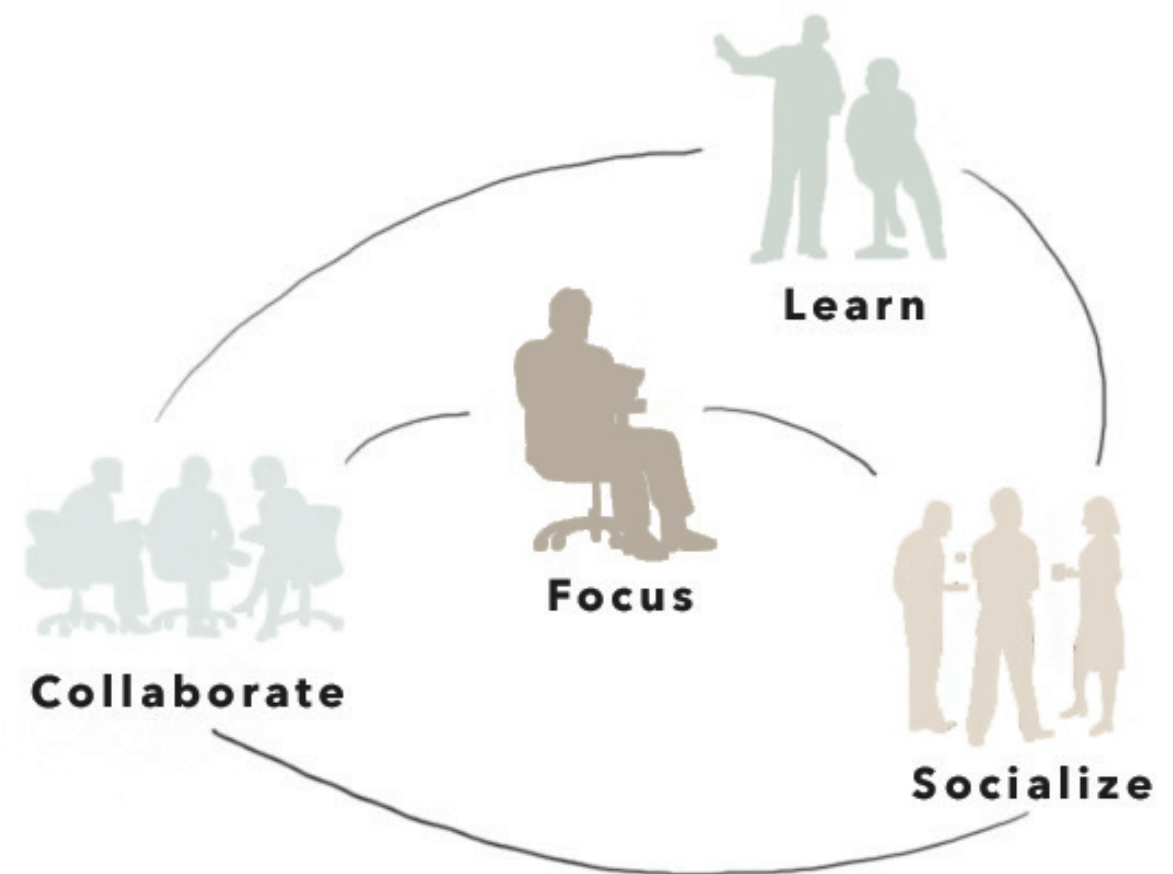
The 7th Floor Reconstruction Project of the SLC Church Office Building includes 10,000 sq ft of commercial office space. Employing 39 people, the Headquarter's Facilities oversees 10 million sq ft of building space and 330 acres of ground. Utilization of current research, technology, space planning and standards to create an efficient, collaborative, focused, productive work environment.

## CLIENT

Church of Jesus Christ of Latter Day Saints Headquarter Facilities

## DESIGN FOCUS

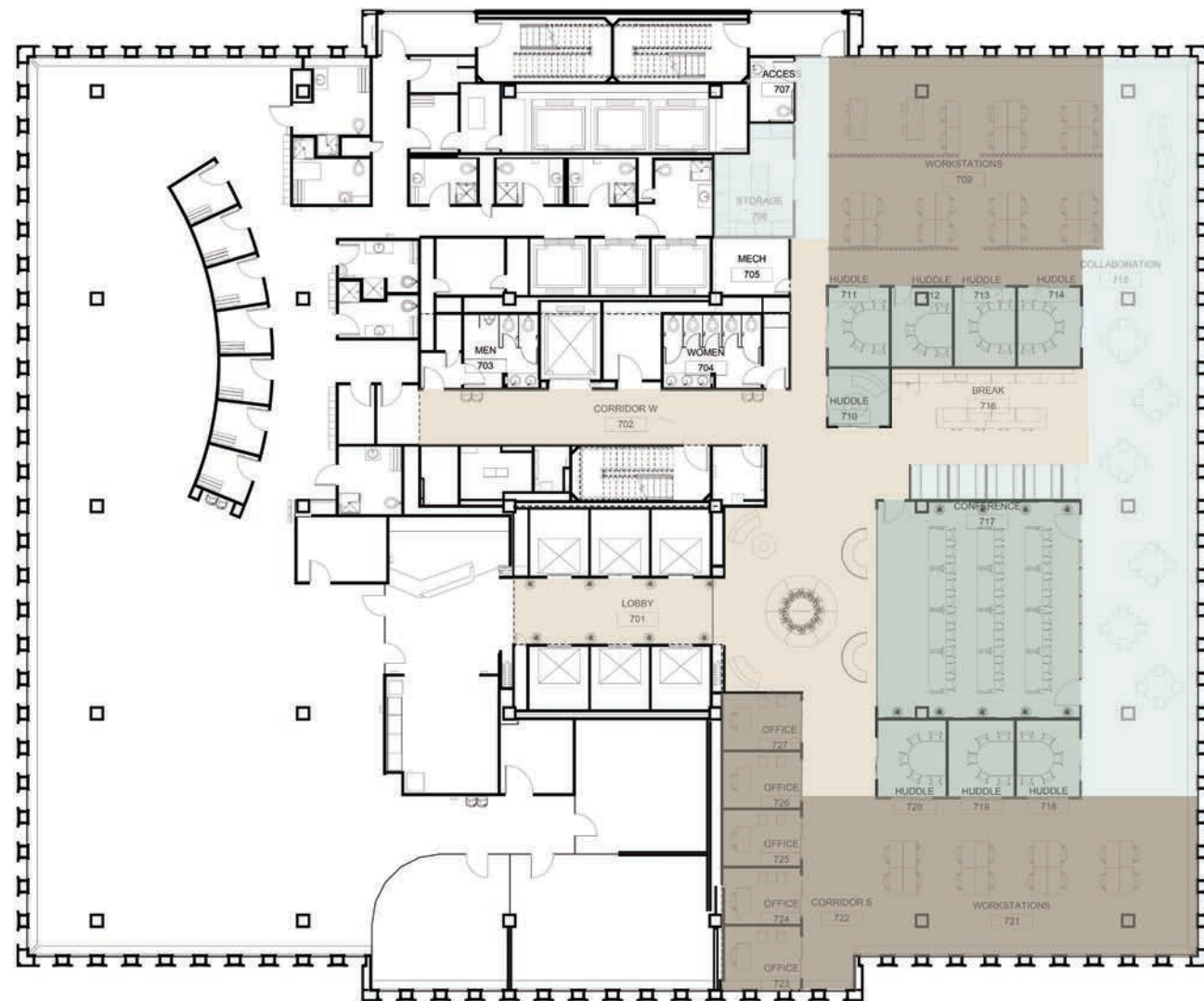
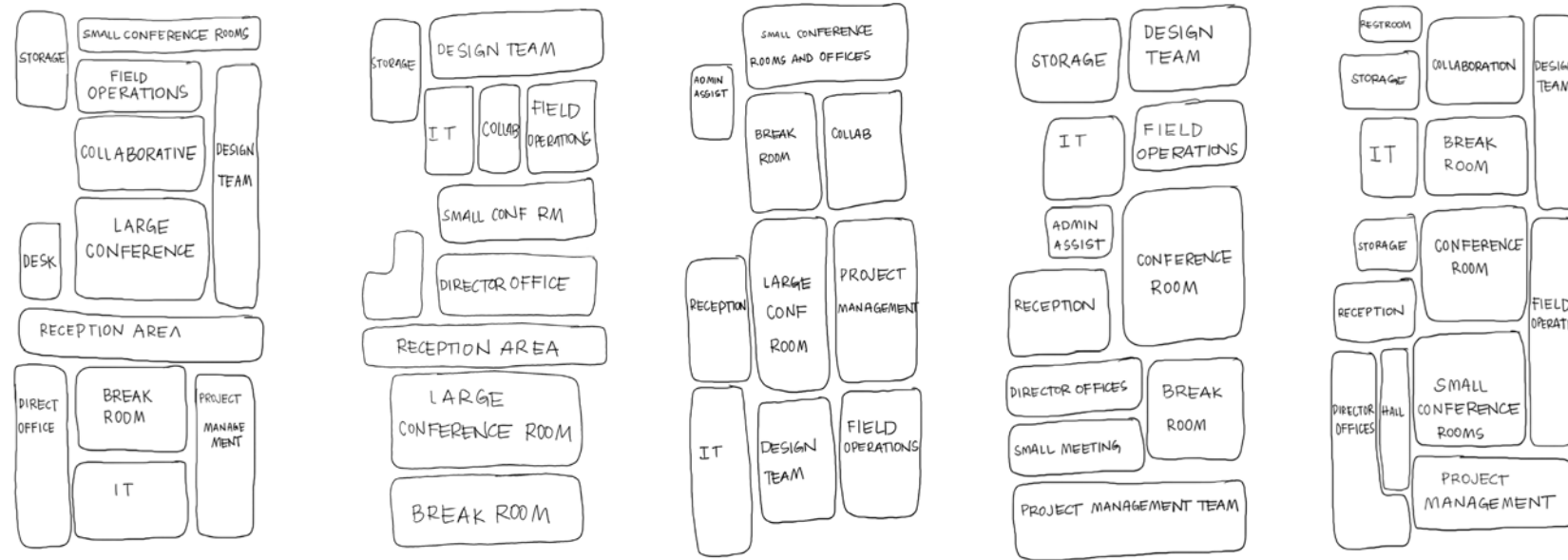
collaborate socialize learn focus



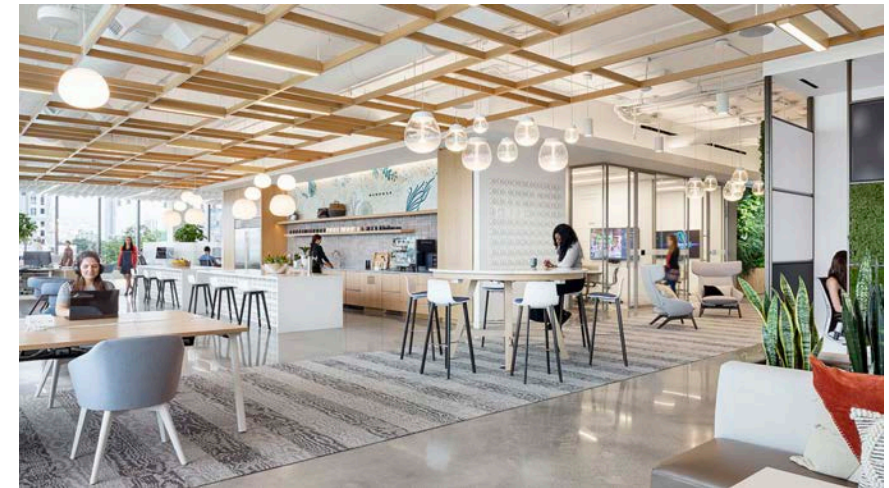
Kami Hatch  
INTERIOR DESIGN



# schematic design & development



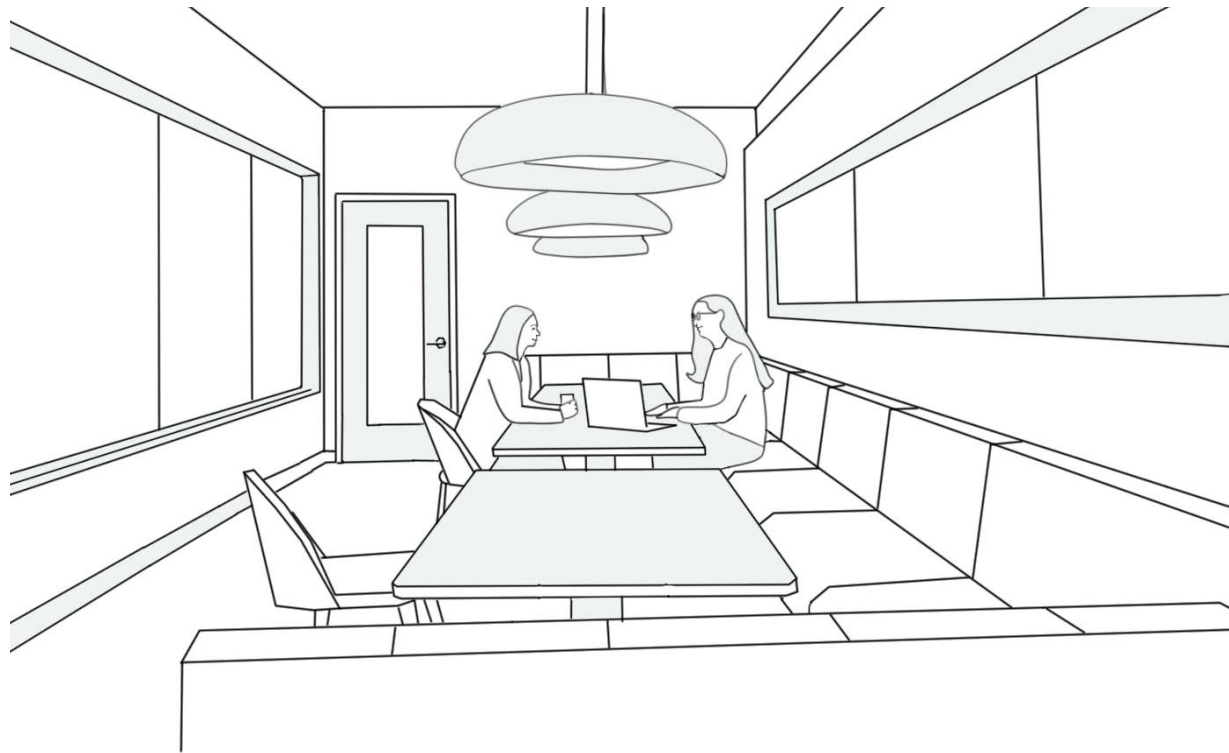
- Collaborate**
- Socialize**
- Learn**
- Focus**



precedent studies



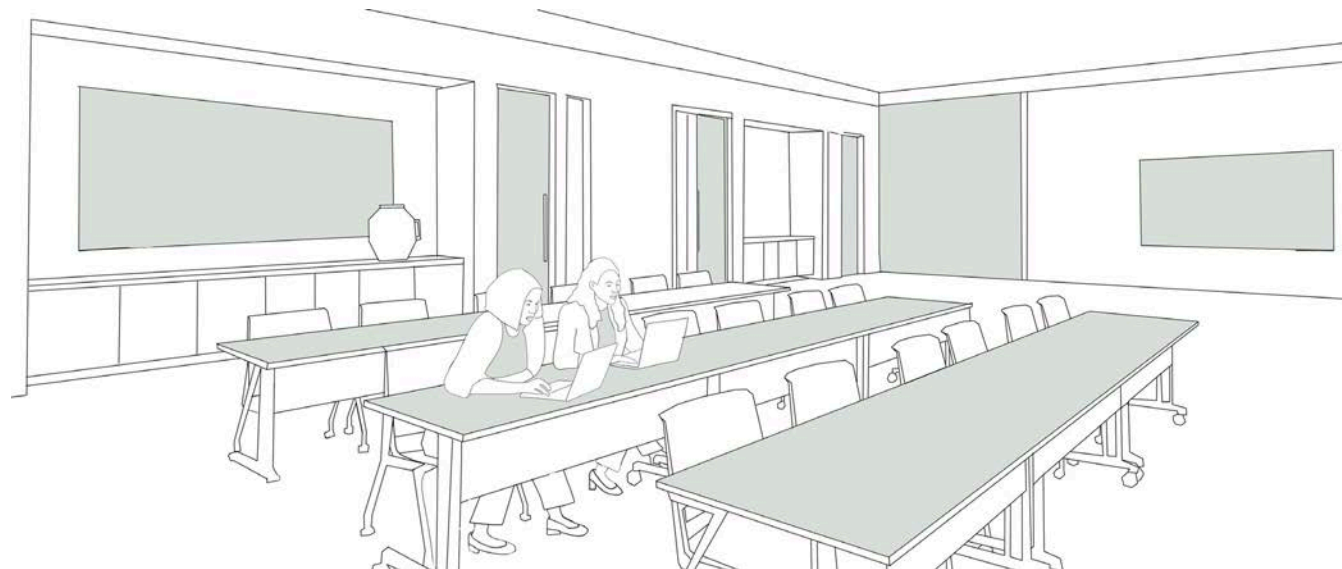
# collaborate



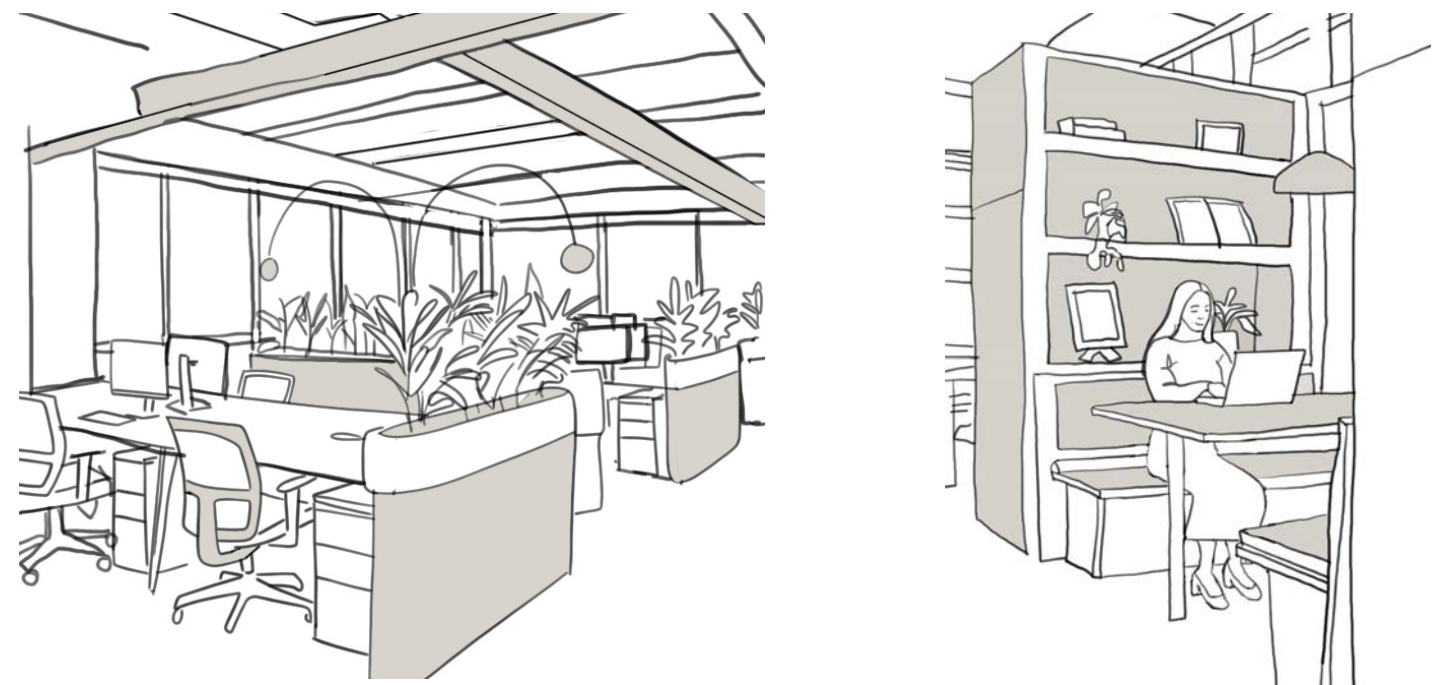
# socialize



# learn



# focus





collaborate



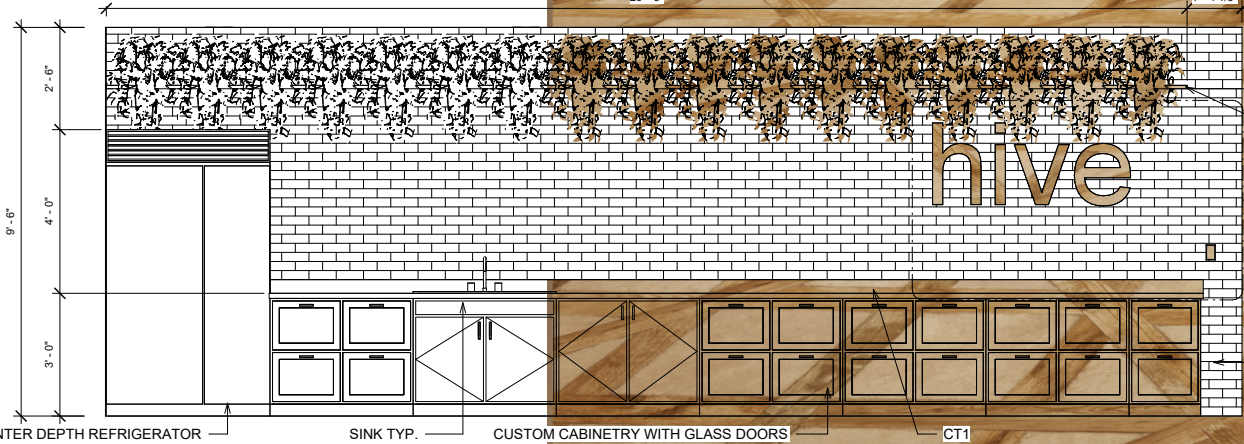
delta rinaldi  
pull down



kohler buckley  
double undermount



quartz arabescato



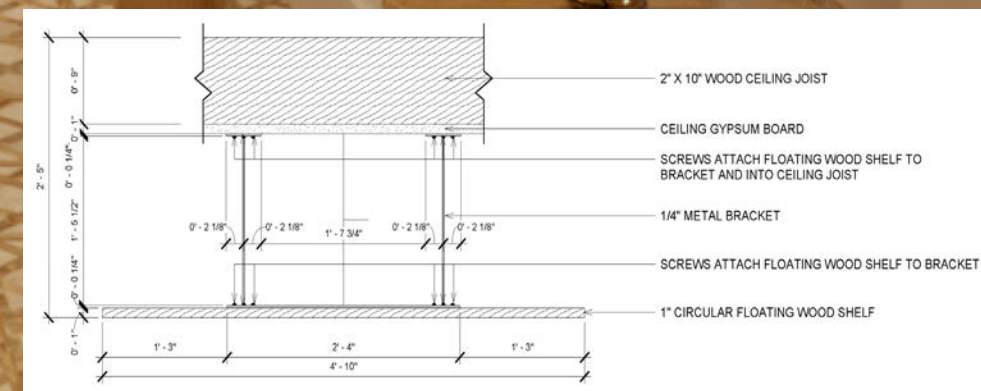
rendered in revit



socialize

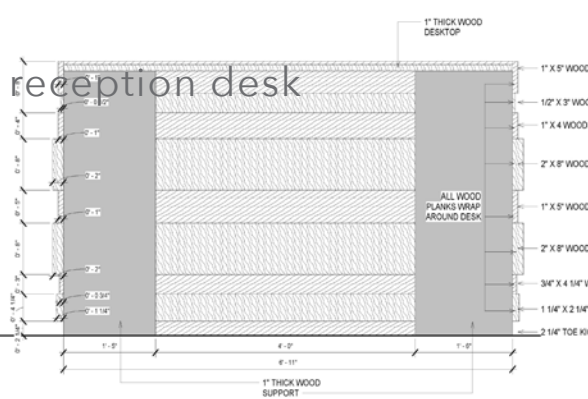


floating plant shelf detail





learn

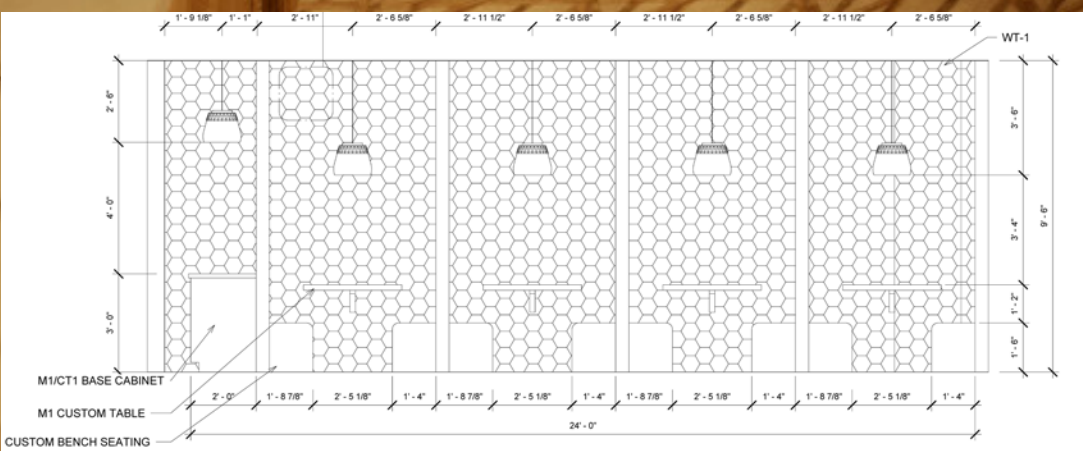




focus



break room south elevation

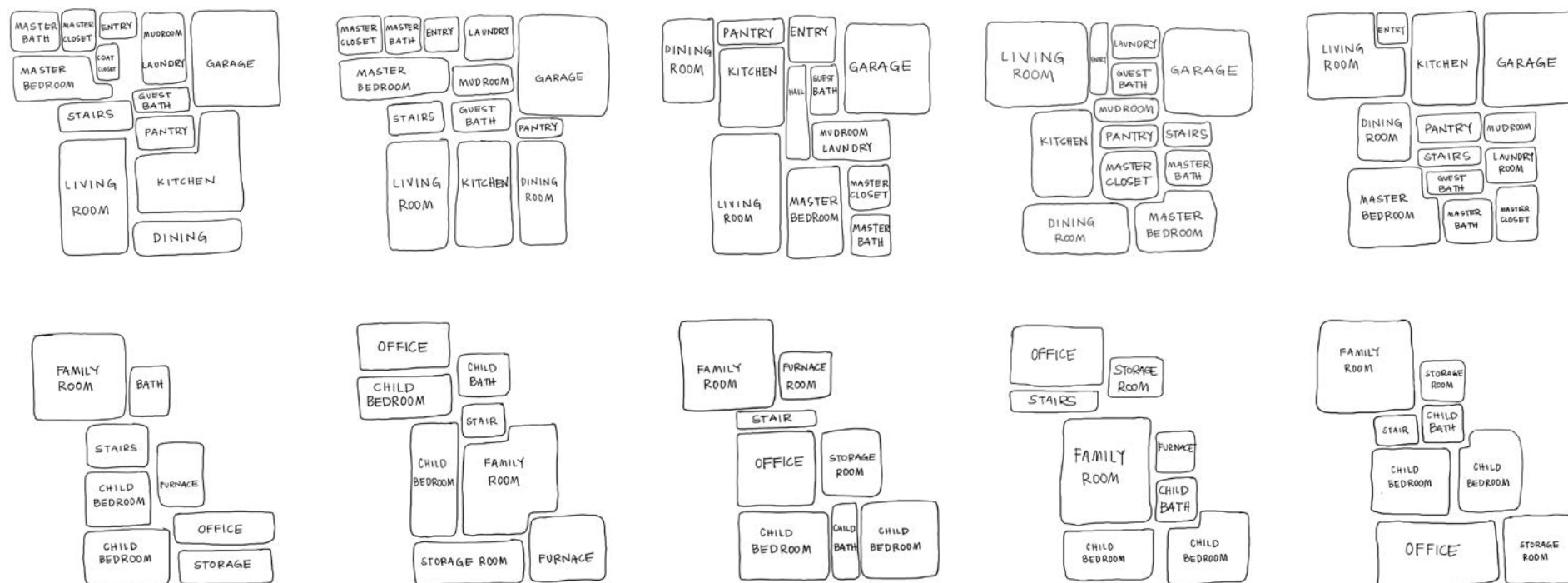






# nordic nest

schematic design & design development



## CLIENT

Single Family Home for the Johanson's

## DESIGN FOCUS

light gather work rest

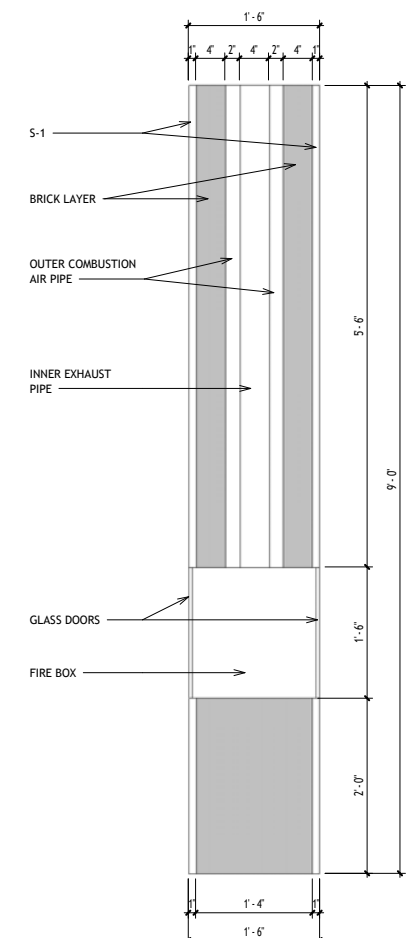
## PROJECT DESCRIPTION

Open floor plan with an abundance of light, central gathering, areas for work and rest. Using finishes inspired by nature and updated home technology, creating a winning combination of both high function and design.

created & rendered in revit & photoshop

## hearth focal point

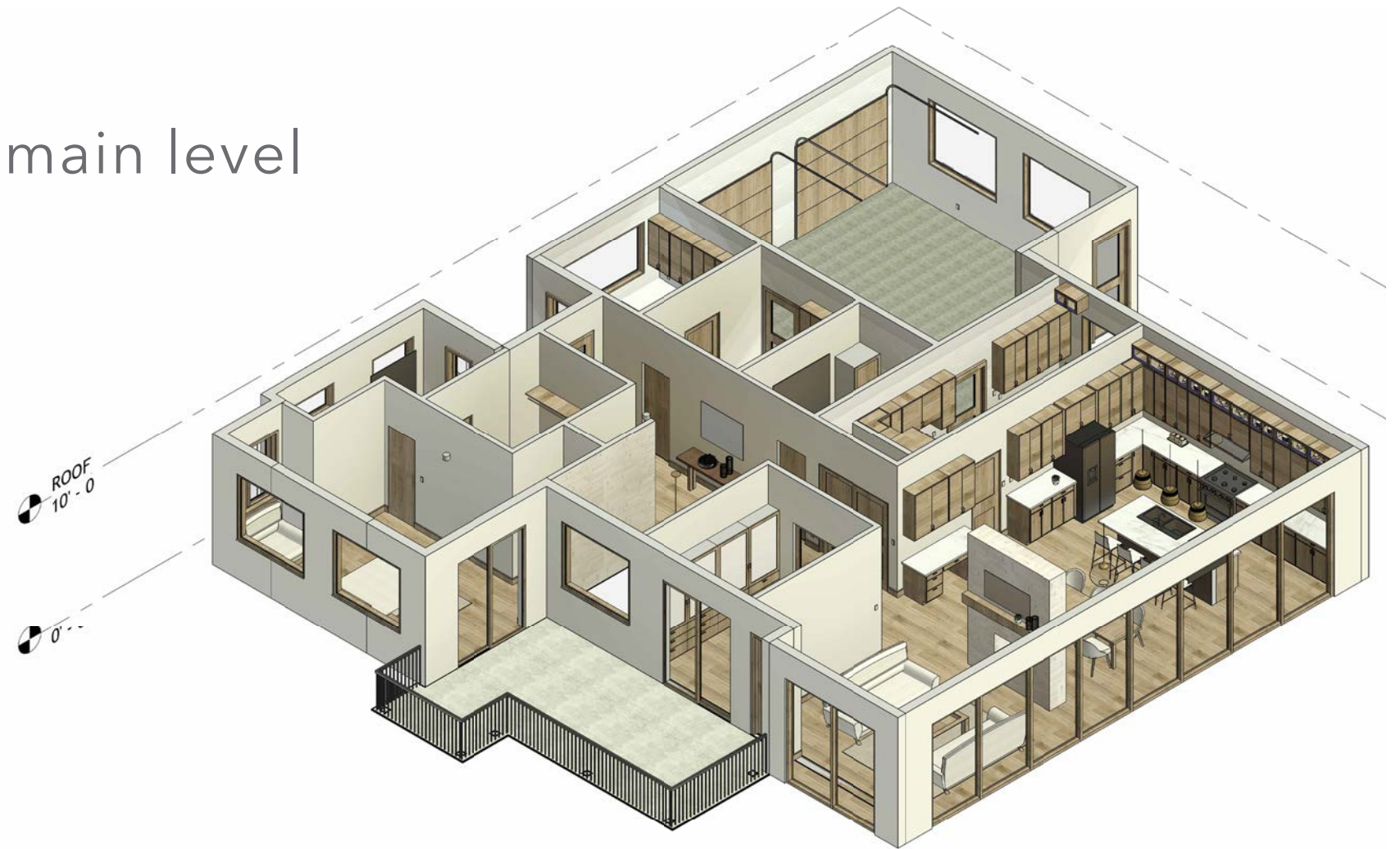
A return to traditional gathering and symbolic heart of home. The hearth represents warmth, connection and foundation of family life. This 360° fireplace hearkens back to the historical fireplace that provided light, heat, cooking and family gathering, making it, once again, the focal point of domestic life.







main level



basement

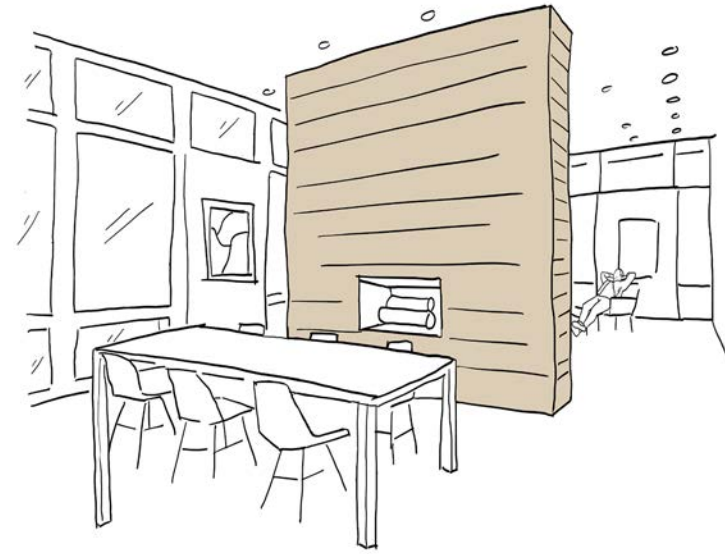




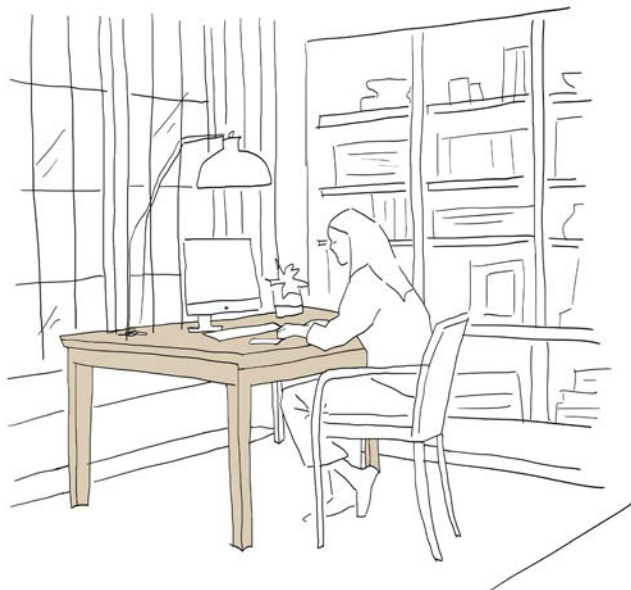
light



gather



work



rest





# light



benjamin moore white dove paint



valor oak wood floor

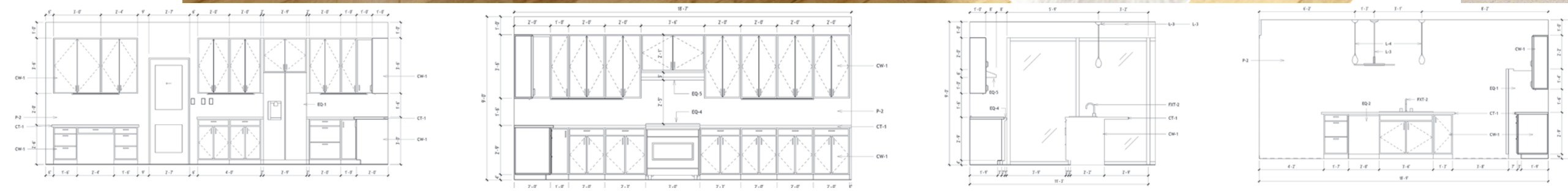




A modern interior design rendering of a living and dining area. The space features light wood flooring, a large white brick fireplace with a built-in wooden shelf and a grey TV mount. A woman stands near a dining table, and a child lies on a white rug reading a book. The background shows a kitchen with wooden cabinetry and a large window with a view of a snowy landscape.

tile bar stackstone

pottery barn  
rustic farmhouse  
extended dining  
table and chair





work



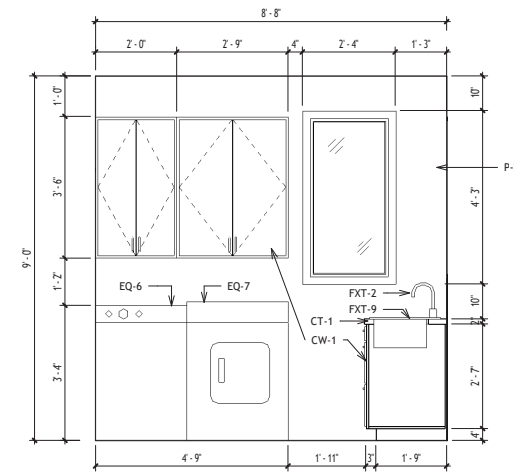
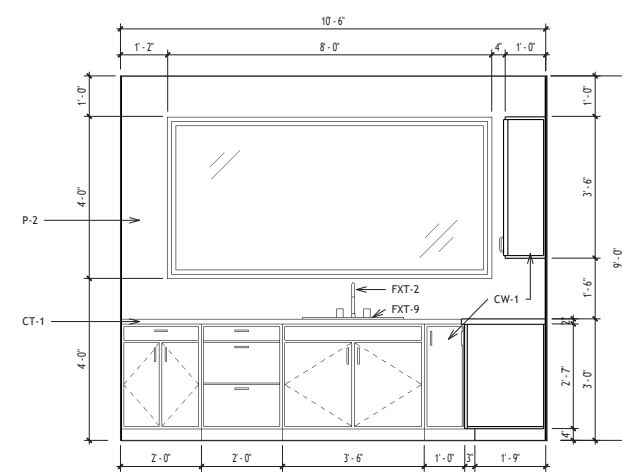
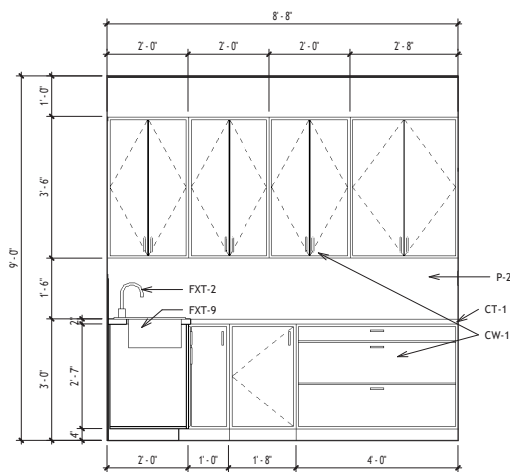
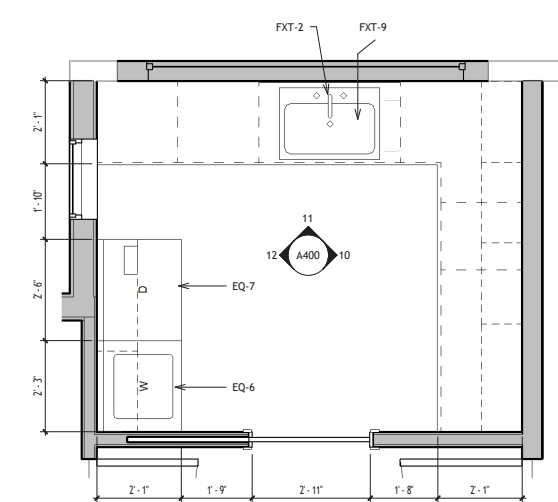
tile barseaport arctic white



arabescato quartz



luminary white floor tile







kids room

r e s t



rendered in revit



pottery barn furniture



primary suite





**CLIENT**  
Hansen Family

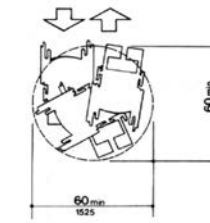
**DESIGN FOCUS**  
Safe Light Unifying Accessible

**PROJECT DESCRIPTION**  
Single family home for 4 with unobstructed flow, modern simplicity of organized living, featuring a natural approach to continuous movement, making an otherwise difficult mobility challenge achievable

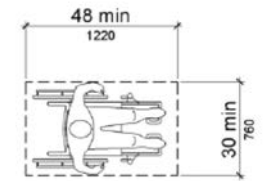
**Carpet**  
• Pile height shall be 1/2" maximum



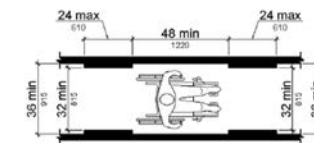
**Circular Turning Space**  
• 60" Diameter



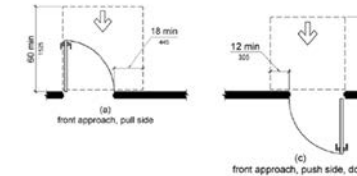
**Clear Floor or Ground Space**  
• 30" x 48" minimum for wheel chair occupants



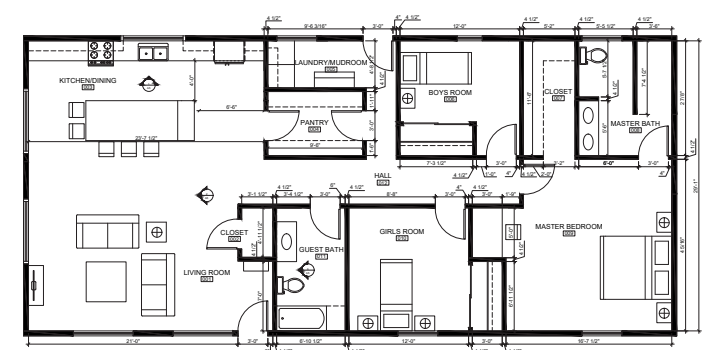
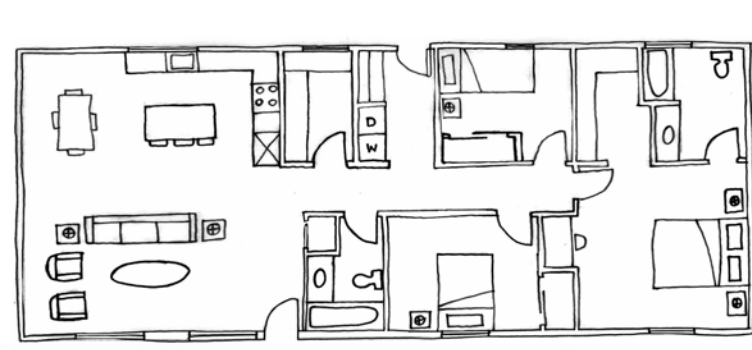
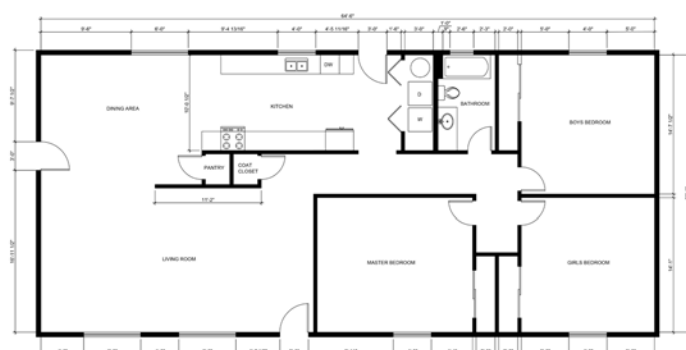
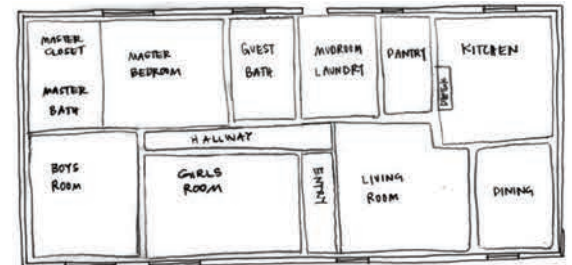
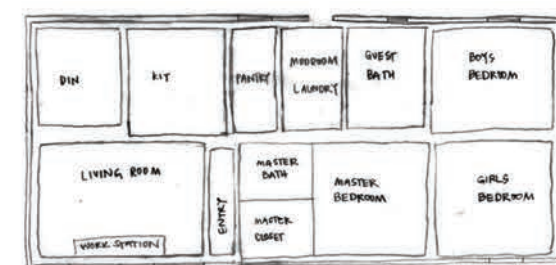
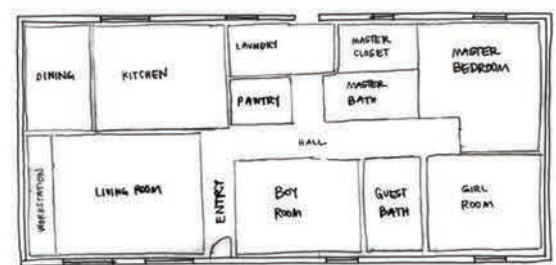
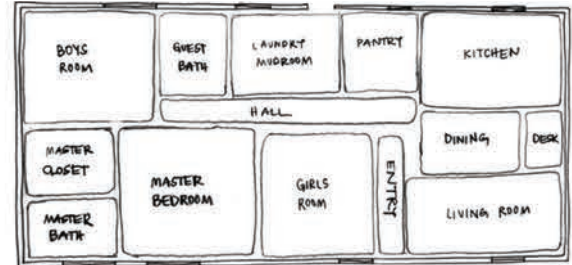
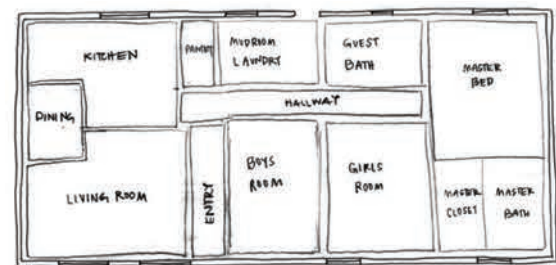
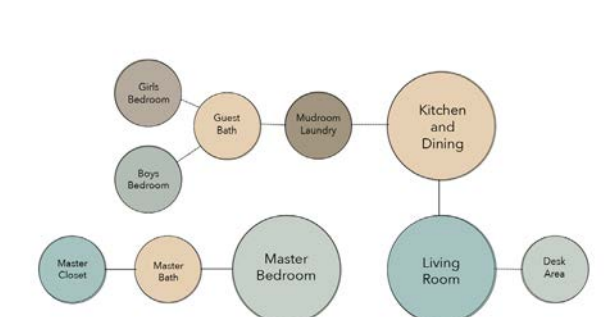
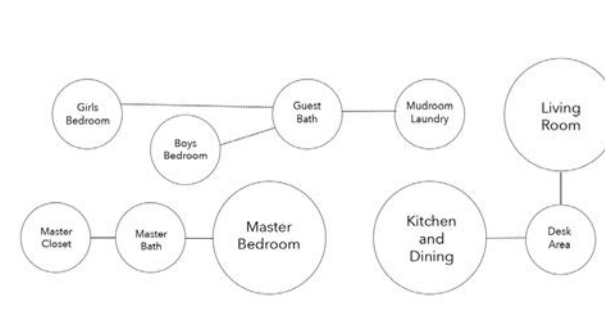
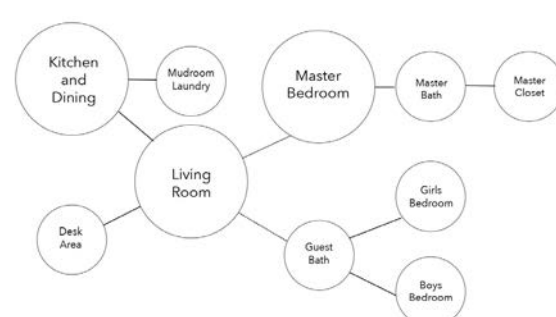
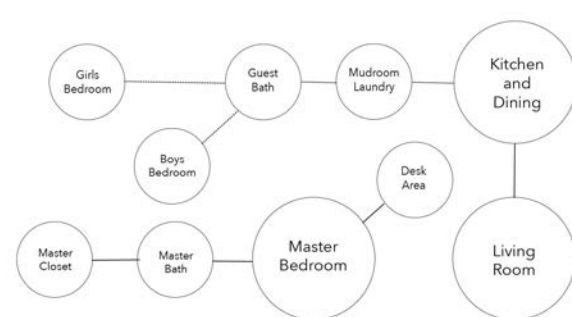
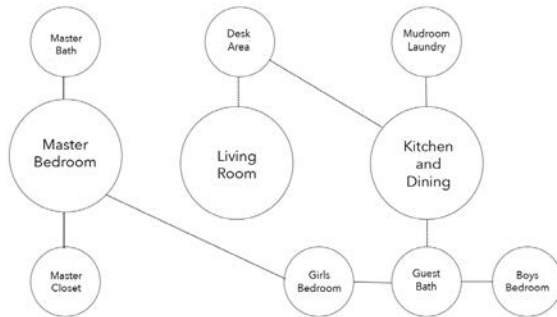
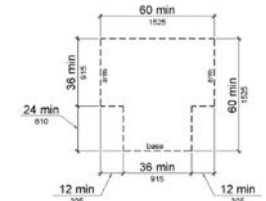
**Clearance**  
• Must have 36" Clear  
• Exception, can be 32" for less than 24"



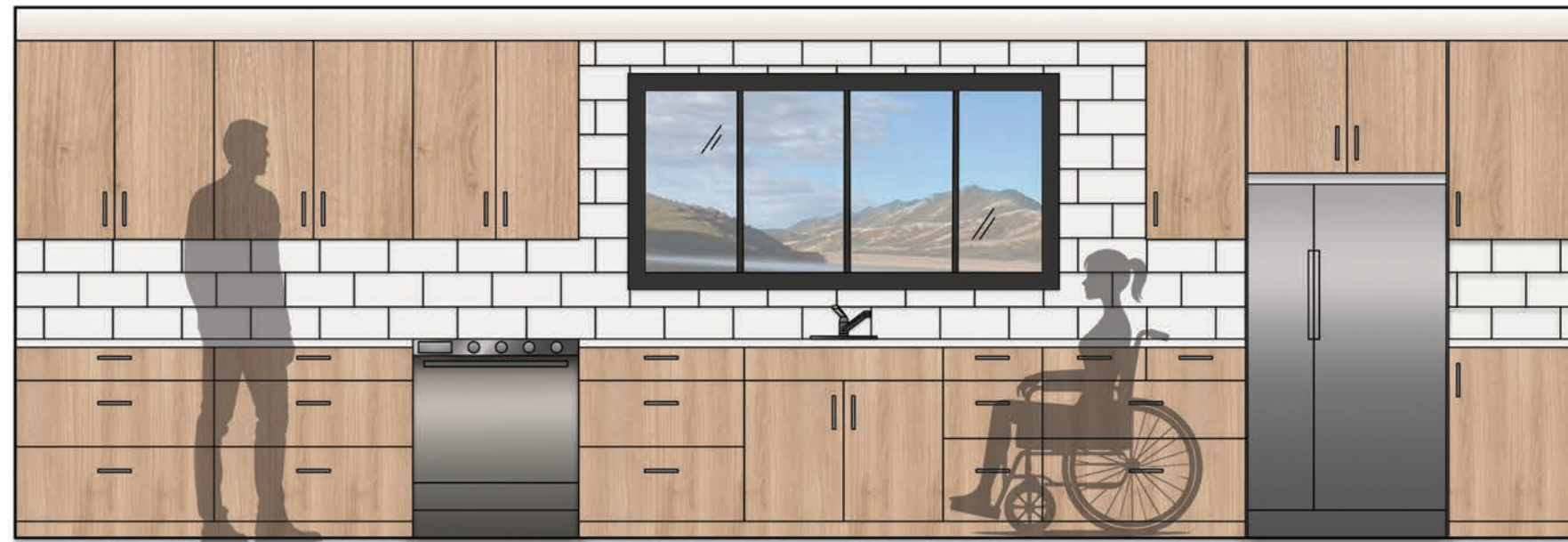
**Maneuvering Clearances at Doors**  
• 18" on Pull Side  
• 12" on Push Side



**T-Shaped Turning Space**  
• 36" minimum corridors with 60" clear in both "T" directions







Main Wood Flooring

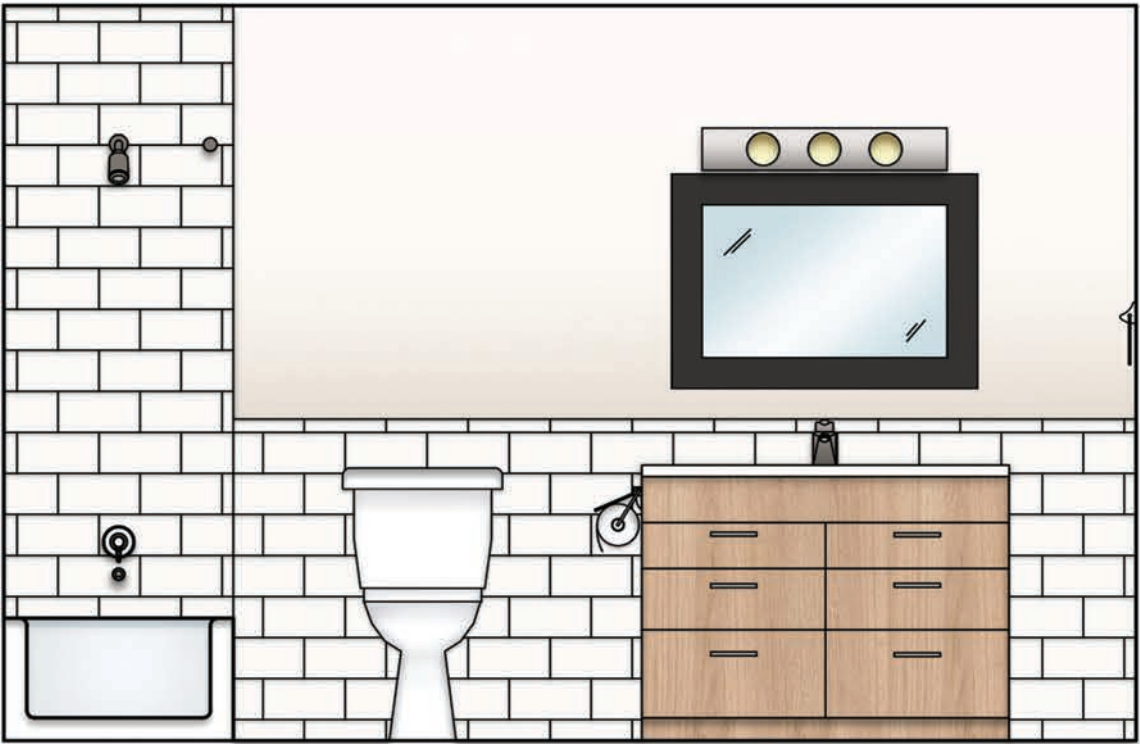
Kitchen Cabinets

rendered kitchen, dining, living elevations and finishes





bed and bath elevations and finishes







# under the sea

Kami Hatch  
INTERIOR DESIGN

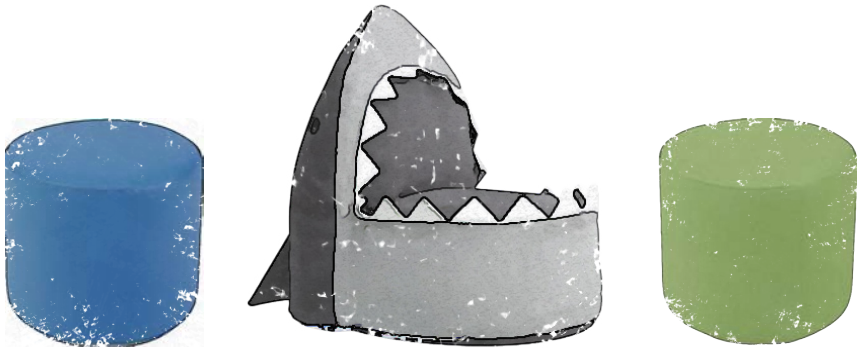
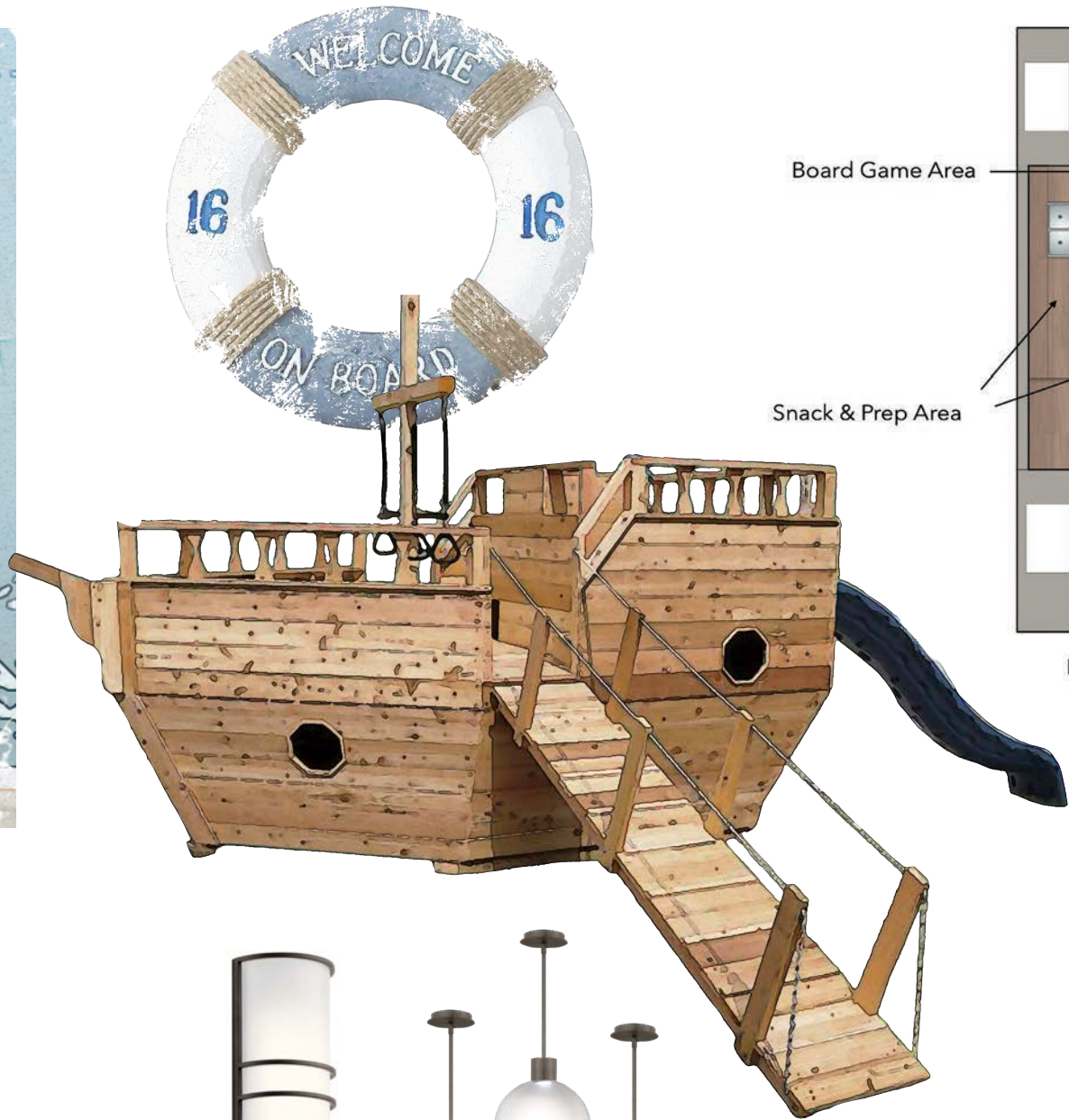
Cruise Ship Children's Play & Game Room



**CLIENT**  
Cerulean Sea Cruise

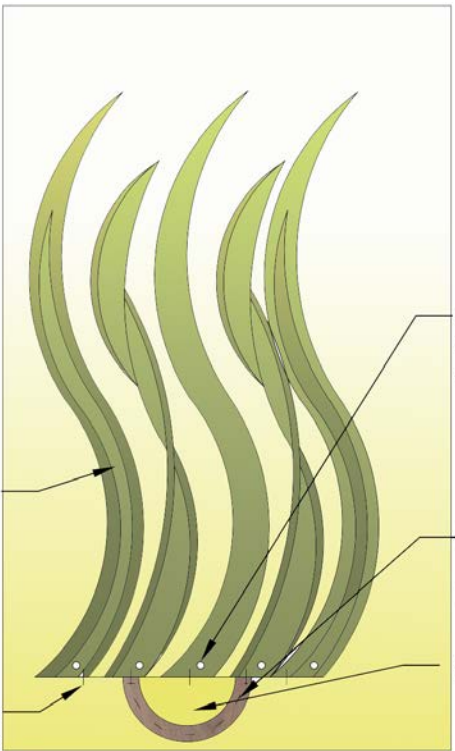
**DESIGN FOCUS**  
Safe  
Light  
Variety  
Marine Life

**PROJECT DESCRIPTION**  
Create a safe, remodeled space for a younger children's play and game area, integrating custom light fixtures.



2"D HOLLOW GREEN, TINTED, REFLECTIVE PLASTIC MATERIAL

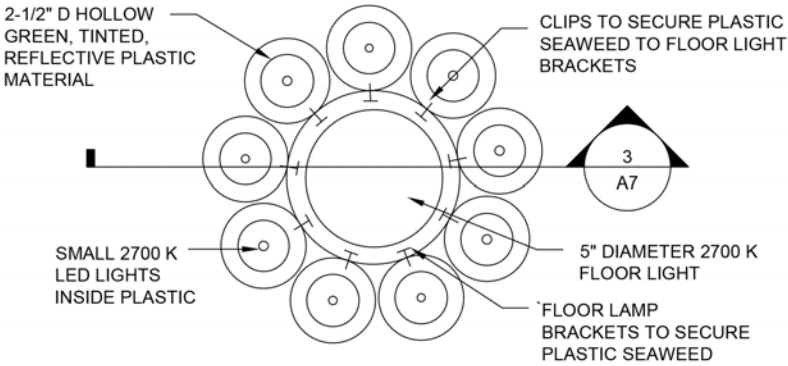
CLIPS TO SECURE PLASTIC SEAWEED TO FLOOR LIGHT BRACKETS



SMALL 2700 K LED LIGHTS INSIDE PLASTIC

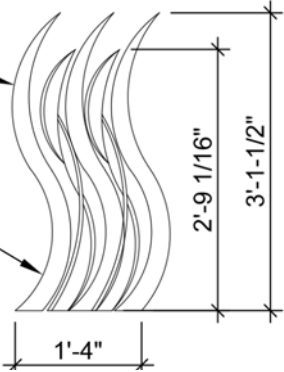
FLOOR LAMP BRACKETS TO SECURE PLASTIC SEAWEED

5" 2700 K FLOOR LIGHT



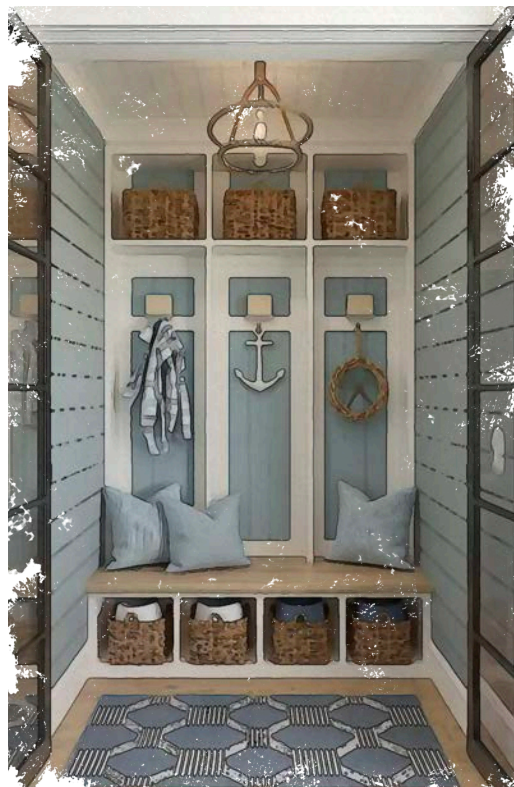
PLIABLE, REFLECTIVE GREEN TINTED PLASTIC MATERIAL

5" D 2700K FLOOR LIGHT IN MIDDLE

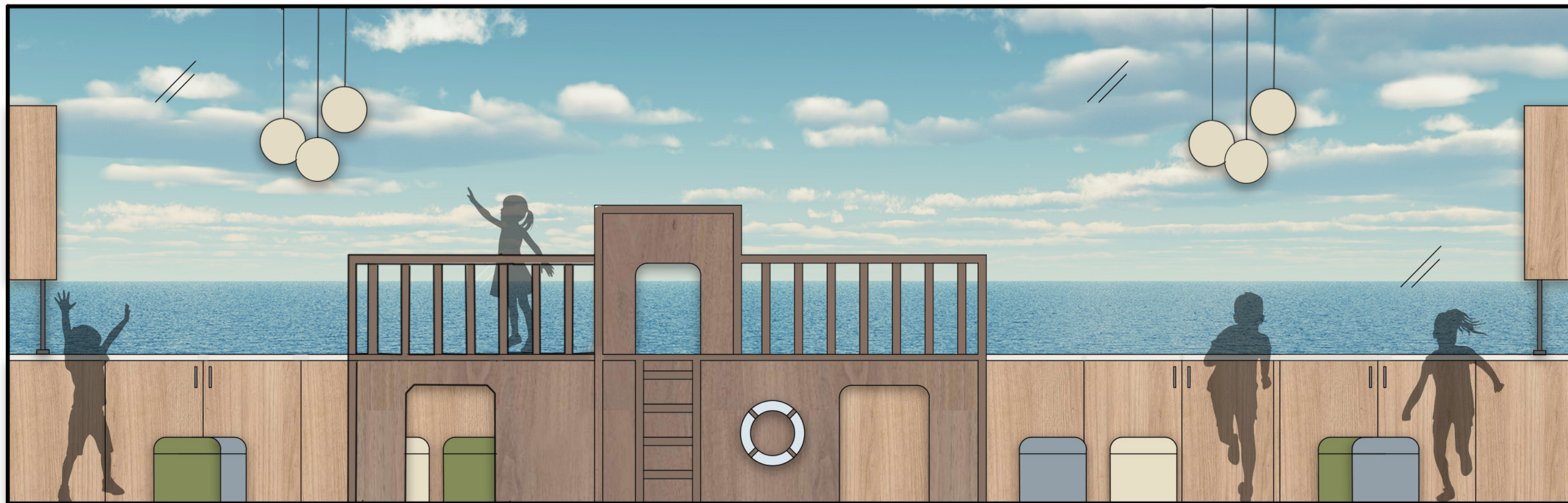




# north elevation and storyboards







east elevation and storyboards





*Kami Hatch*  
INTERIOR DESIGN