

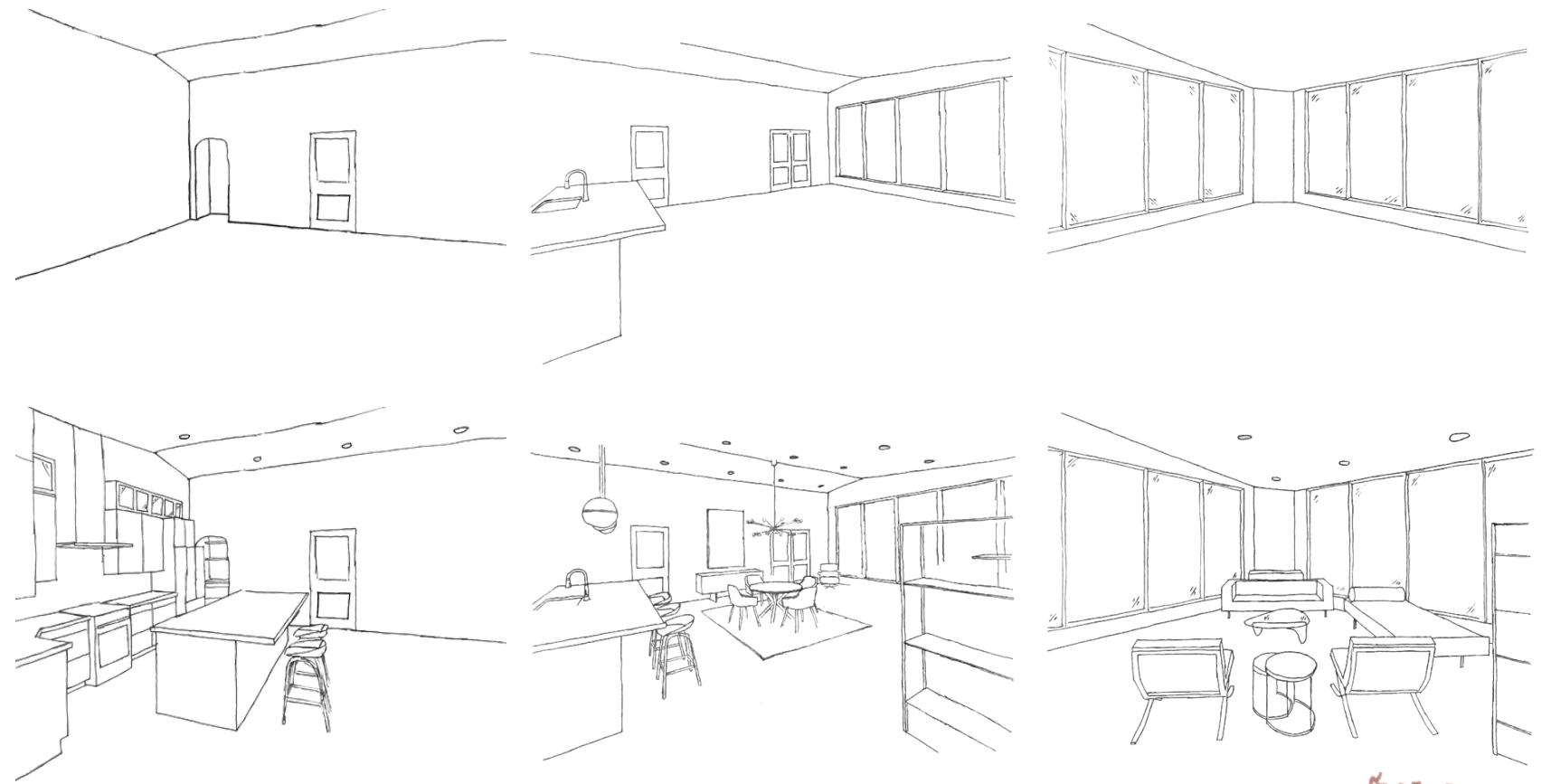
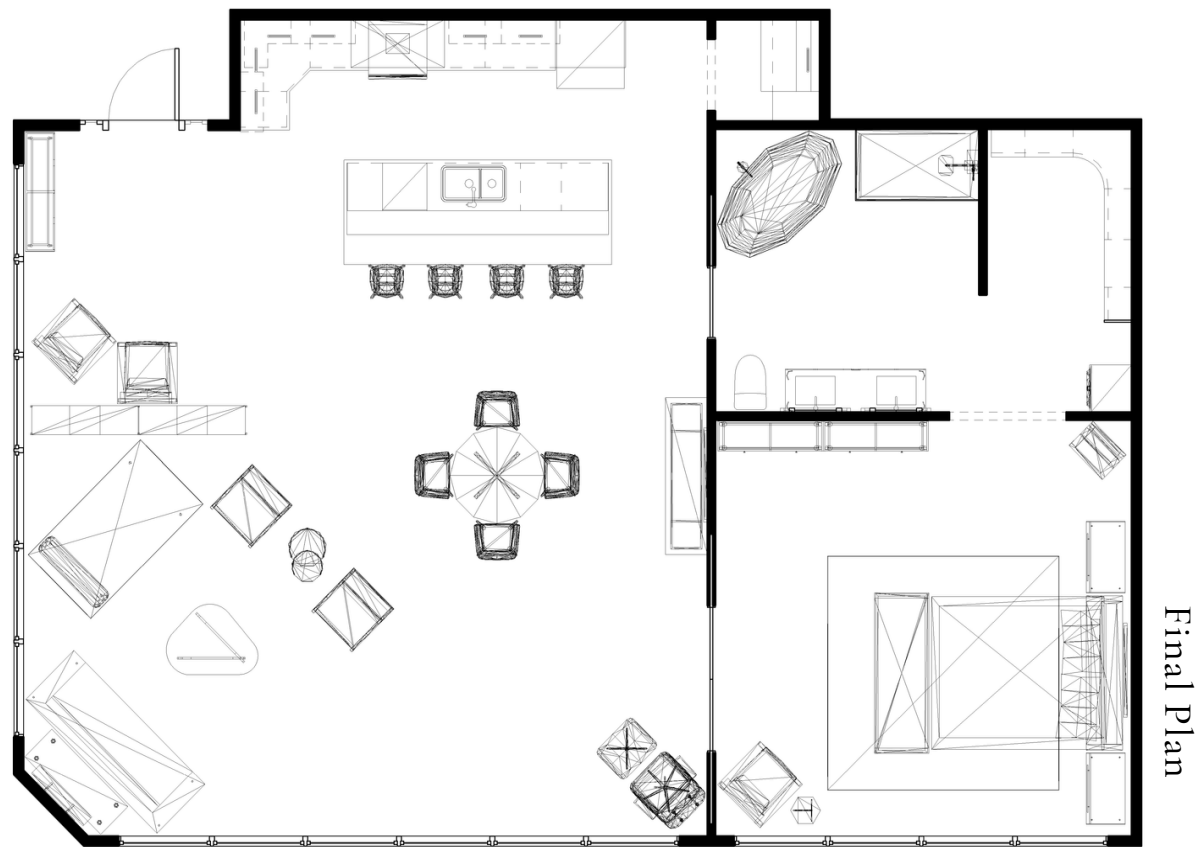
Cambryn Campbell

Design Portfolio

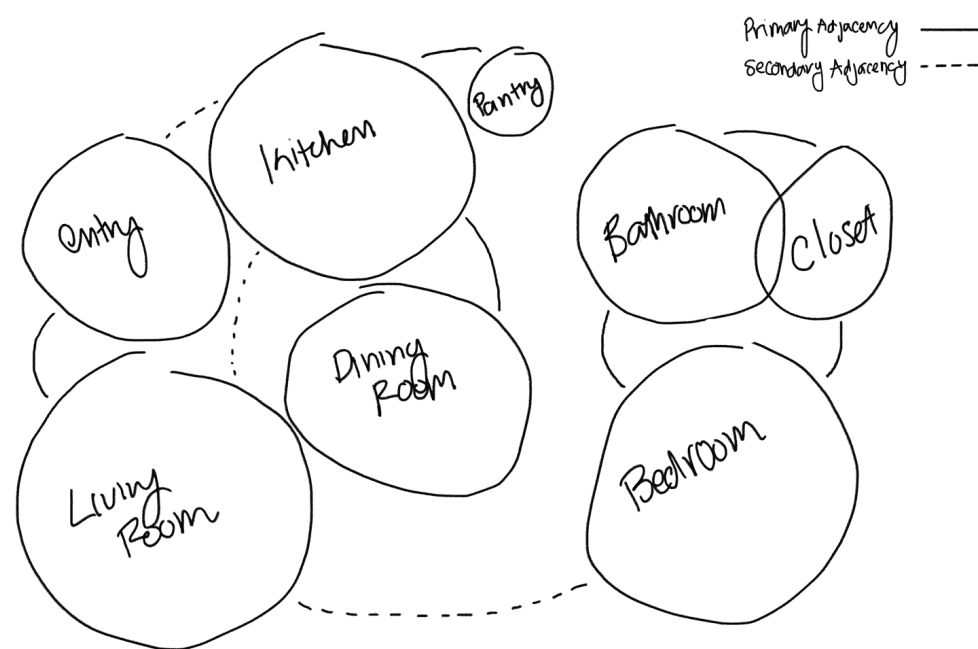
Mid-Century Condo



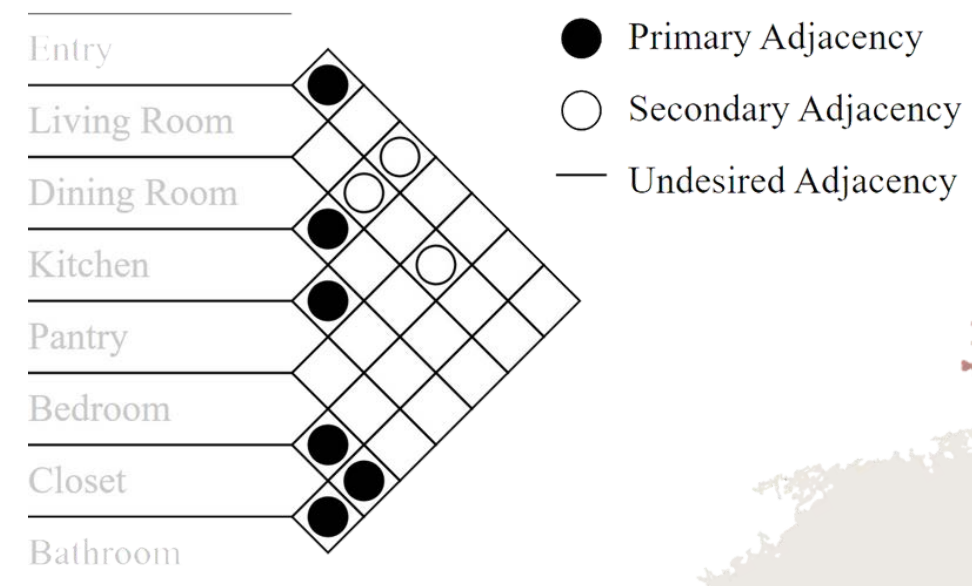
The goal of this project was to take a blank space and turn it into a beautiful, functional, Mid-century inspired condo. With similarly large windows, I was inspired by The Glass House in Connecticut to create an open and bright floor plan. This was achieved by using walls where separation was needed but leaving the rest open to the bright and beautiful windows.



Design Sketches



Bubble Diagram

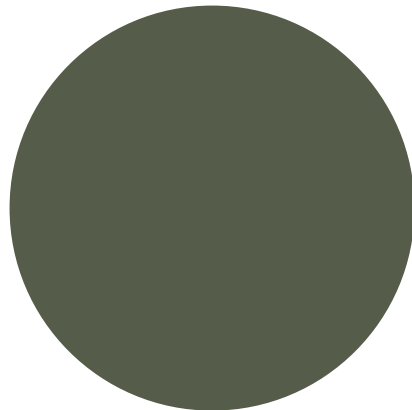
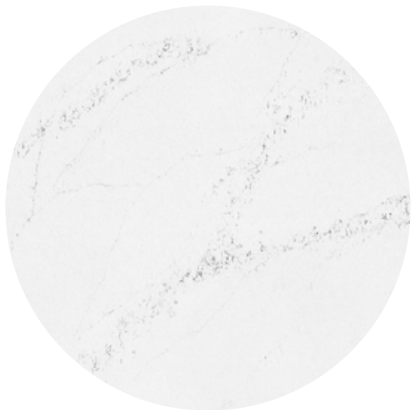


Adjacency Matrix





Kitchen



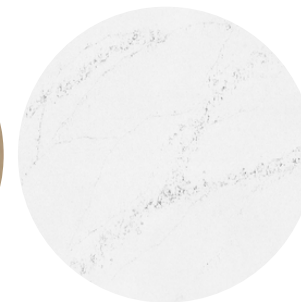
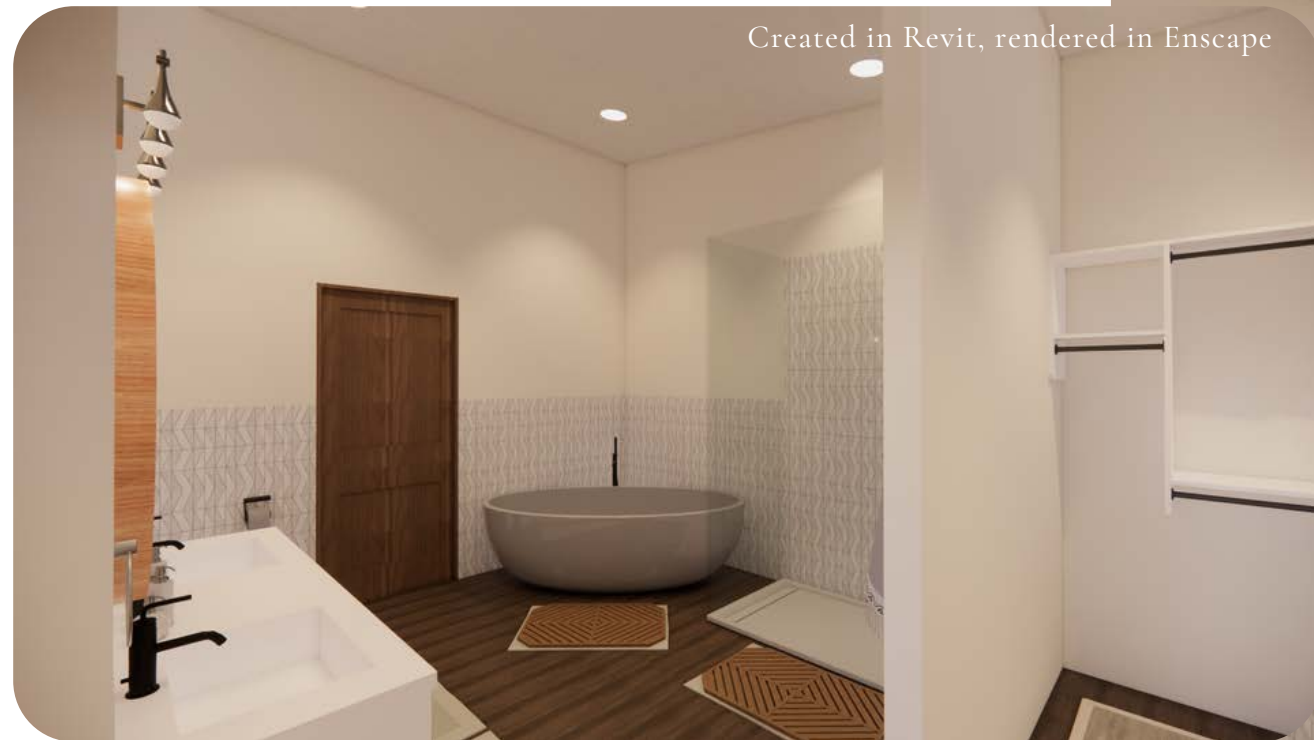


Dining + Living

Bedroom + Bath



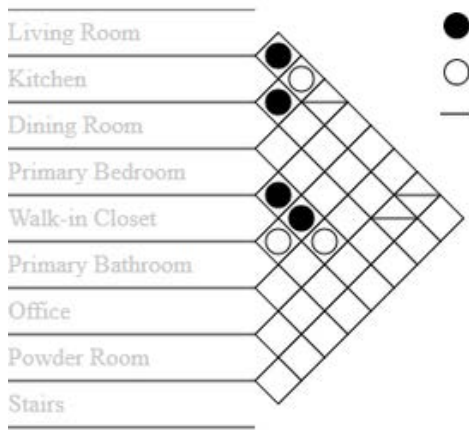
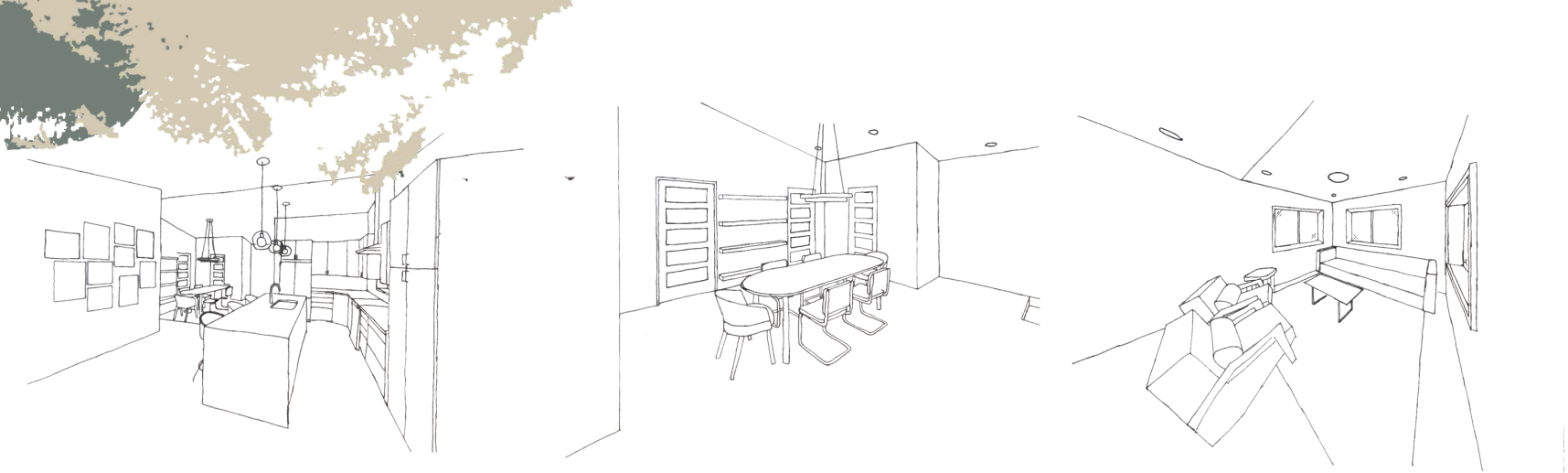
Created in Revit, rendered in Enscape



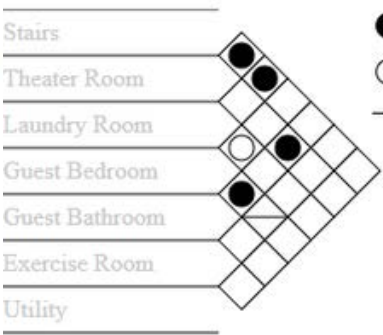
Bountiful Home



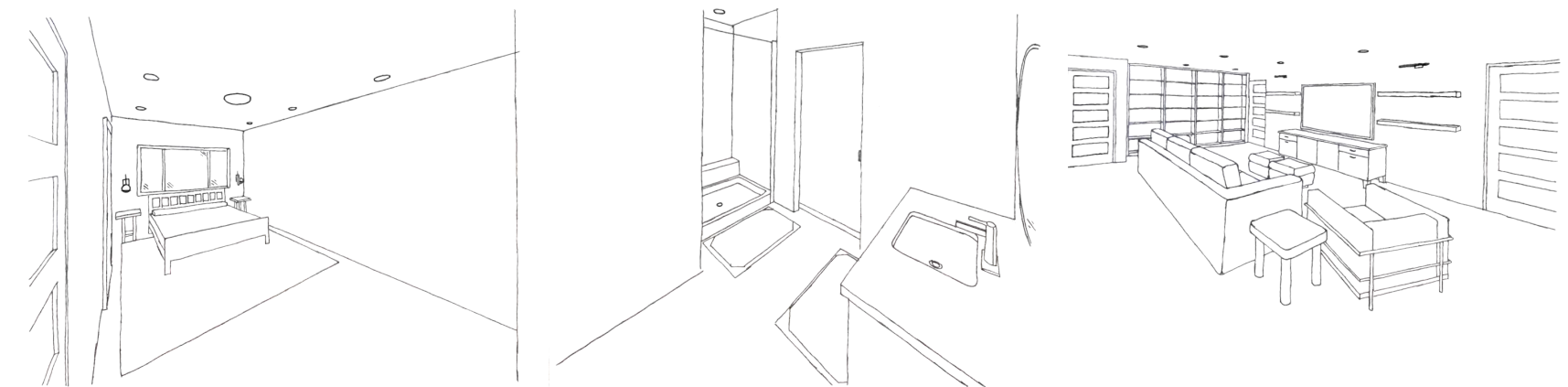
The main goal of this remodel was to create a space that is functional, modern, and simple. Additional goals were to add a primary bedroom, a space large enough for having friends and family over, and a comfortable theater room.



● Primary Adjacency
○ Secondary Adjacency
— Undesired Adjacency



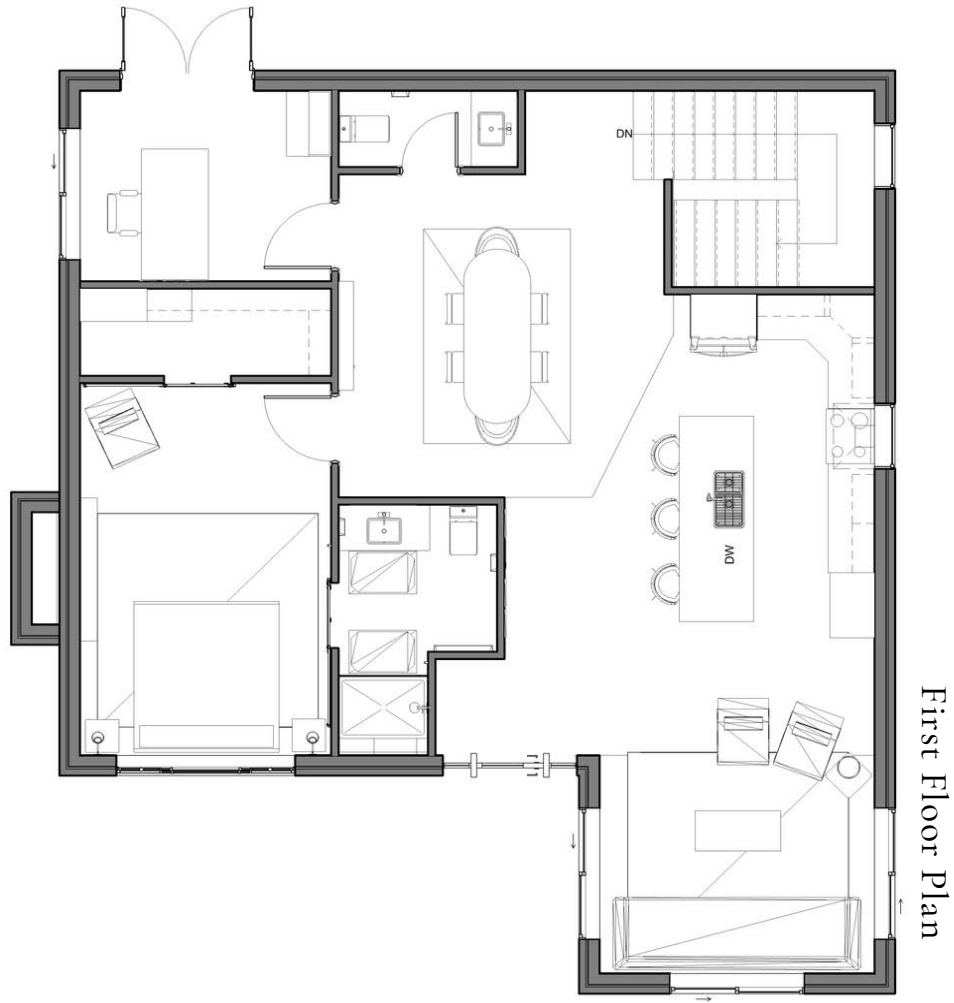
● Primary Adjacency
○ Secondary Adjacency
— Undesired Adjacency



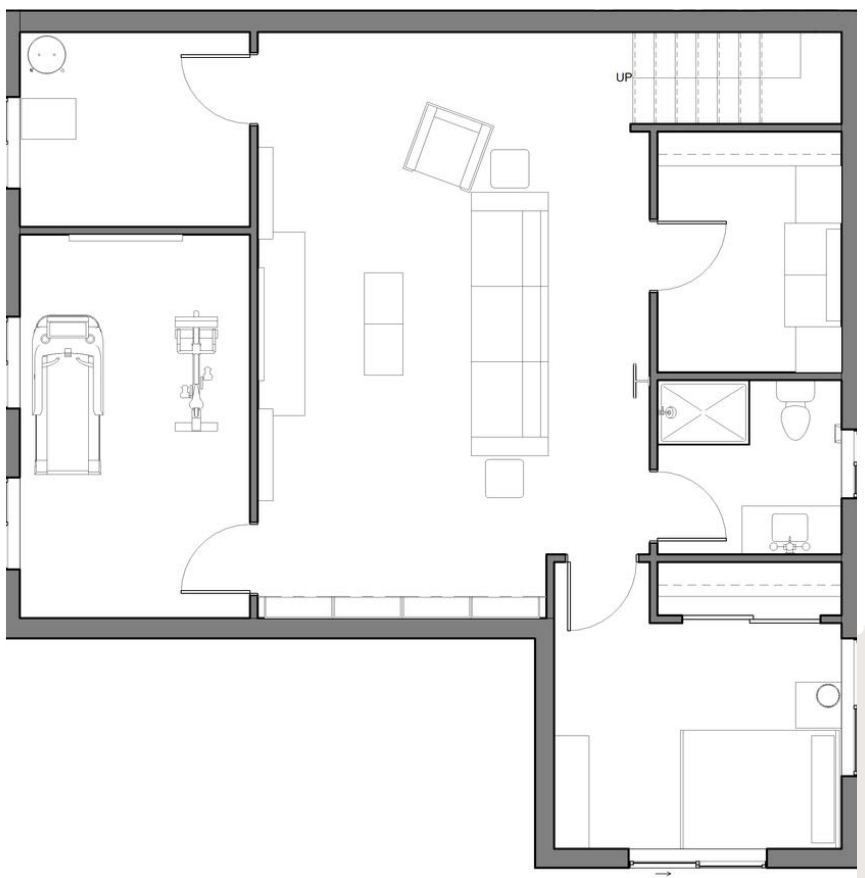
First Floor Adjacency Matrix

Basement Adjacency Matrix

Design Sketches



First Floor Plan



Basement Plan

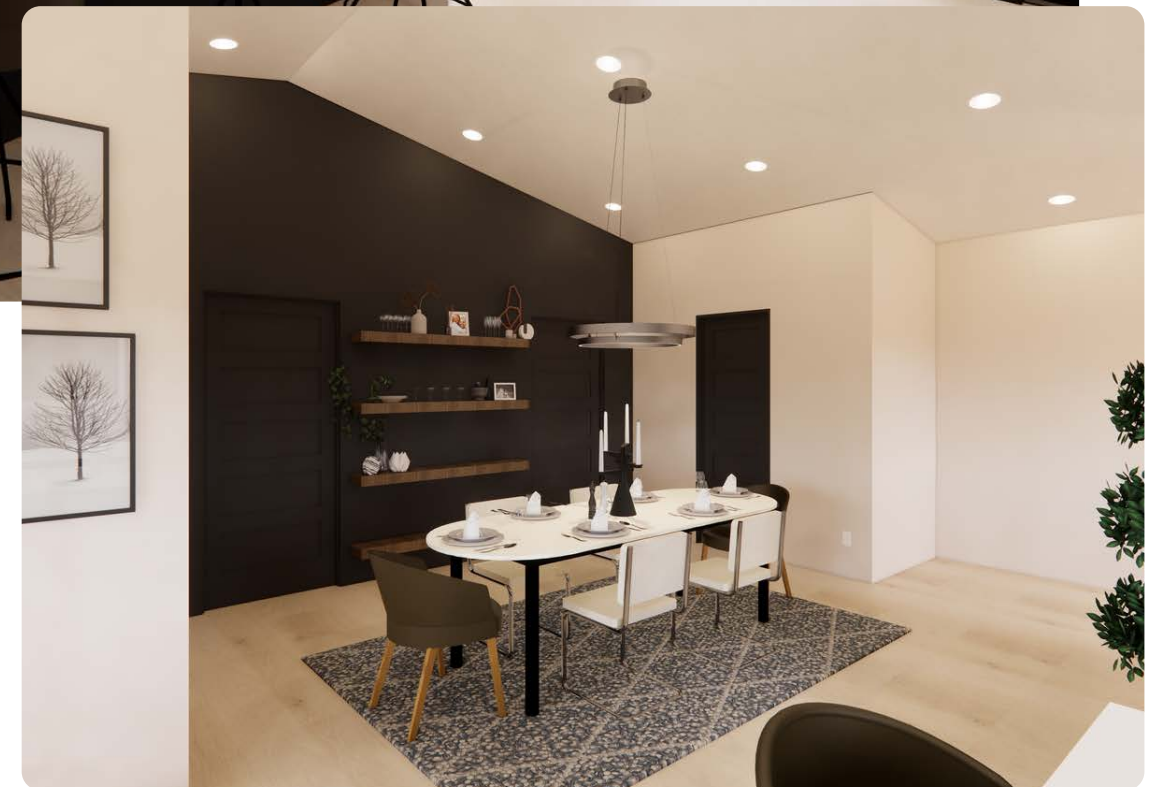


Kitchen + Dining





By removing unnecessary walls, an open floor plan was achieved, perfect for entertaining guests. A large kitchen with a waterfall edge island and matte, flat panel cabinets achieve a modern look. The kitchen is open to the dining and living room, so everyone is still connected when there is lively conversation.



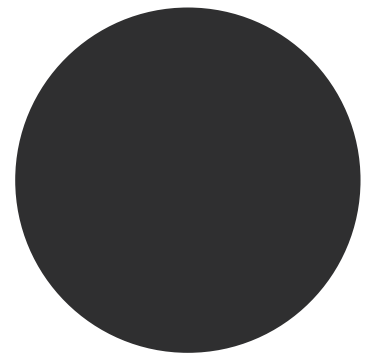
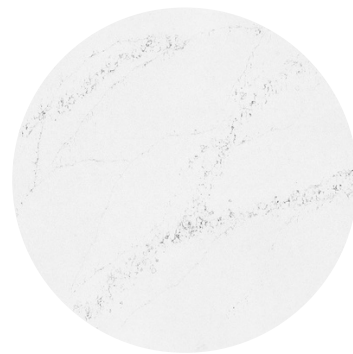
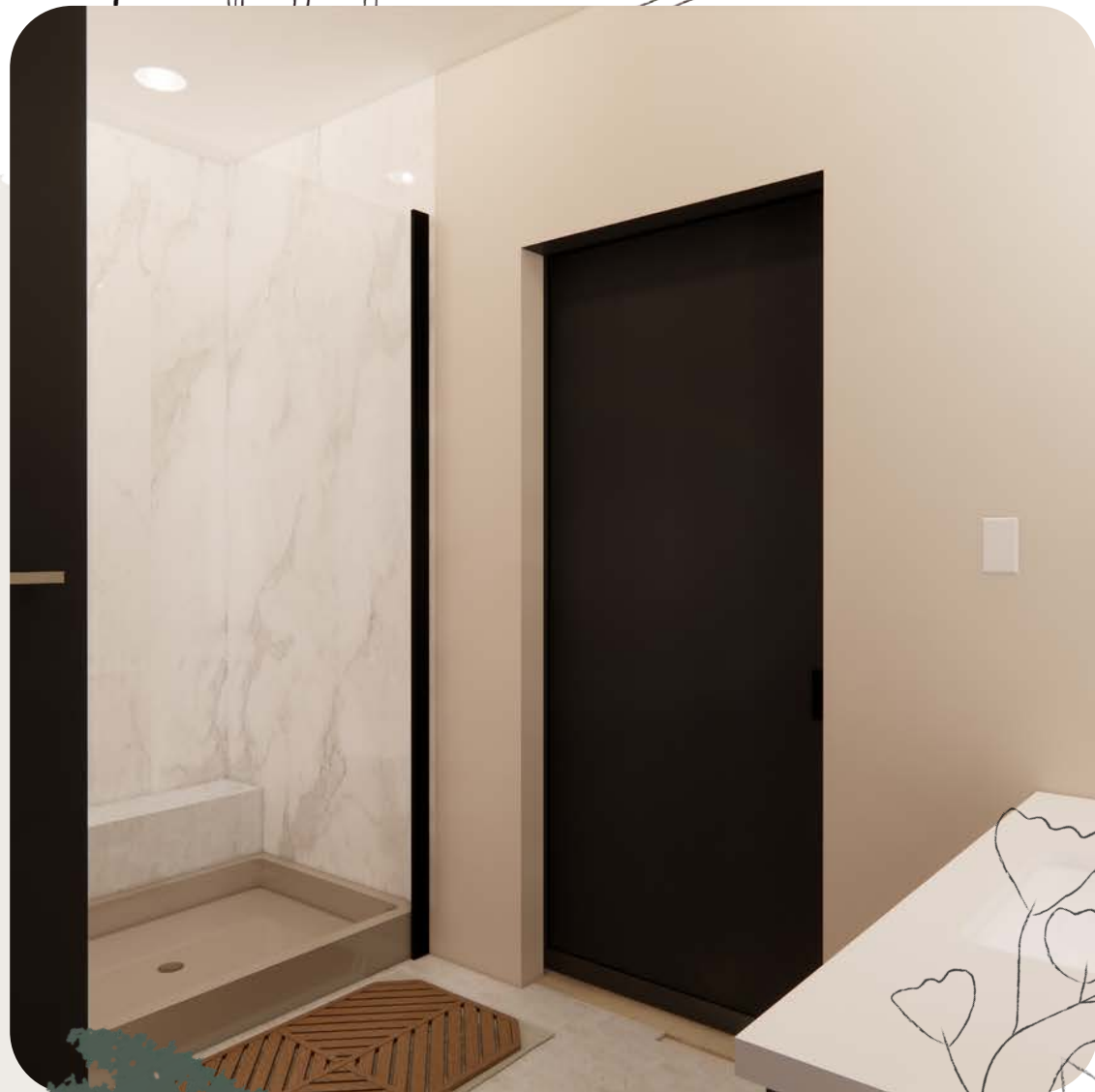
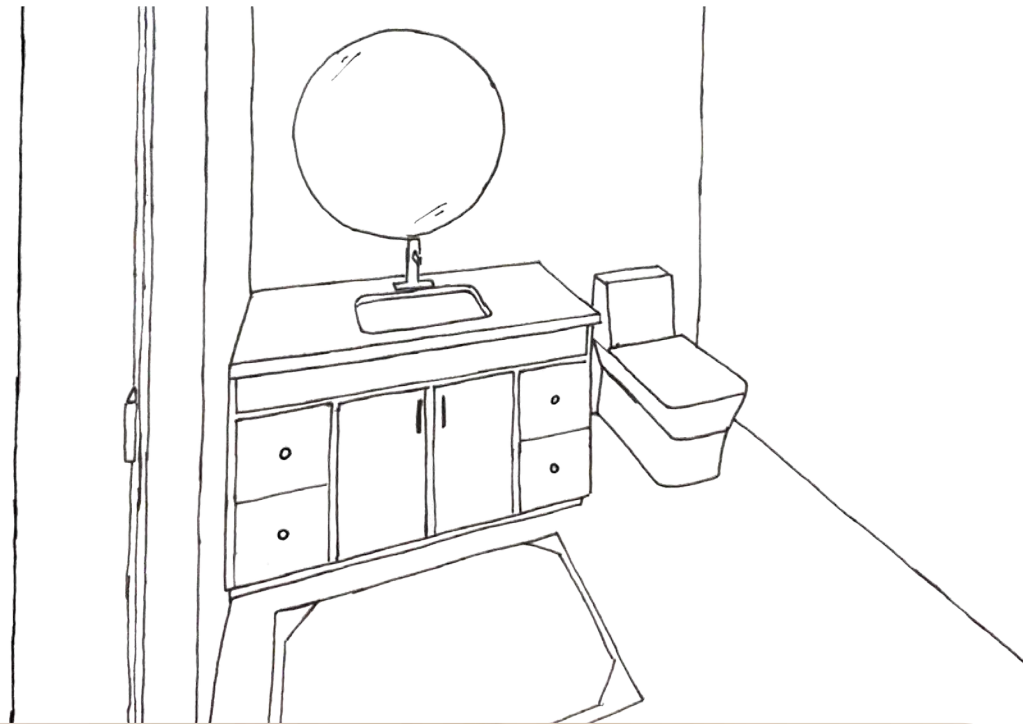


Created in Revit, rendered in Enscape

Living Room

Primary Bedroom + Bath





Created in Revit, rendered in Enscape



Created in Revit, rendered in Enscape

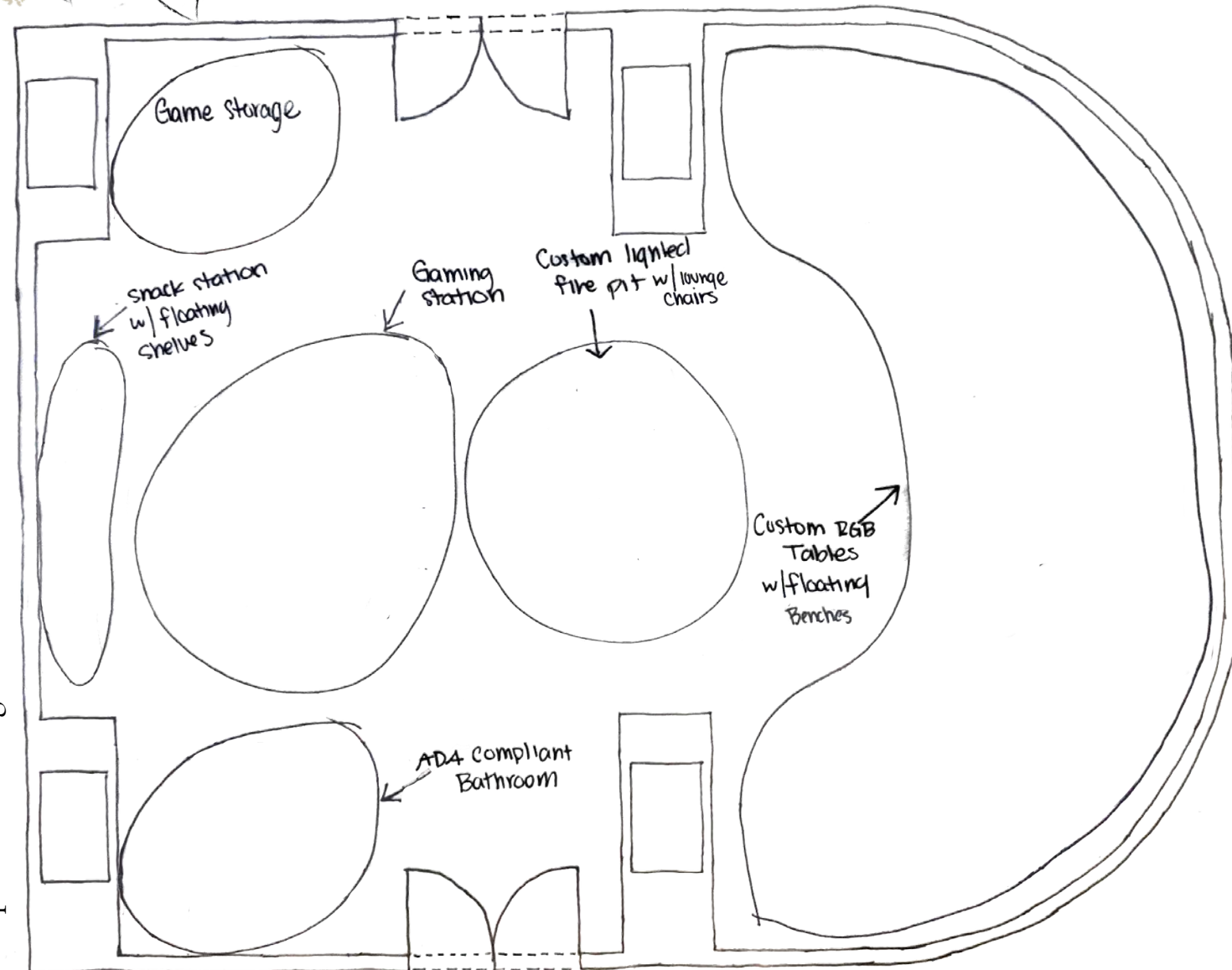
Theater Room

Teen Cruise Lounge

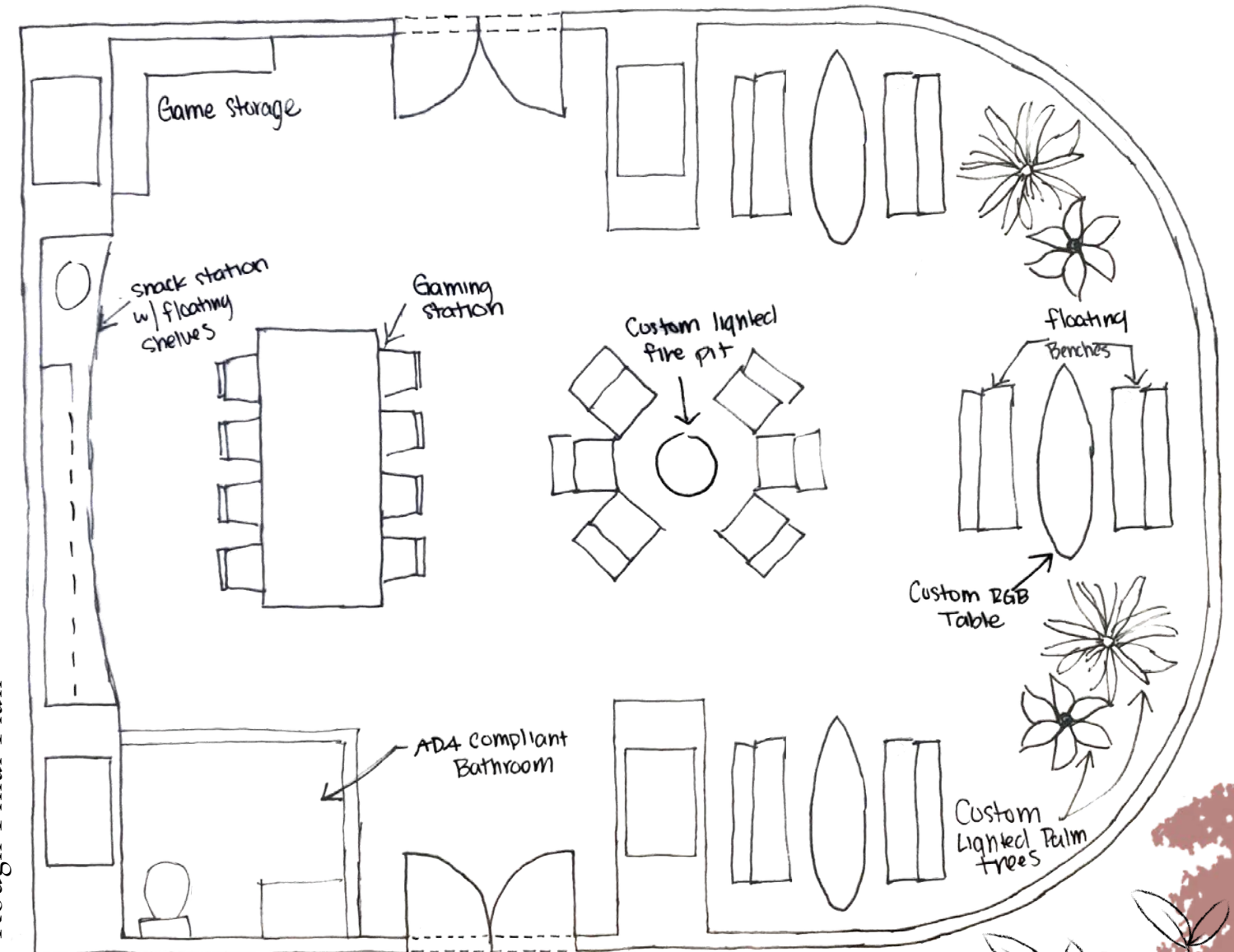


This teen lounge had one goal, to create a themed room that is fully immersive through custom lighting and furniture. The theme is a tiki hut bar on the beach. Custom lights are introduced through the lighted fire pit, surfboard tables with integrated LEDs, and palm trees that are lit from within in. A large screen on the back wall will play real-time beach scenes that are synced with the current time of day. As the day goes by, so will the scene.

Space Planning



Rough Final Plan



Final Plan





Created in AutoCAD, rendered in Photoshop