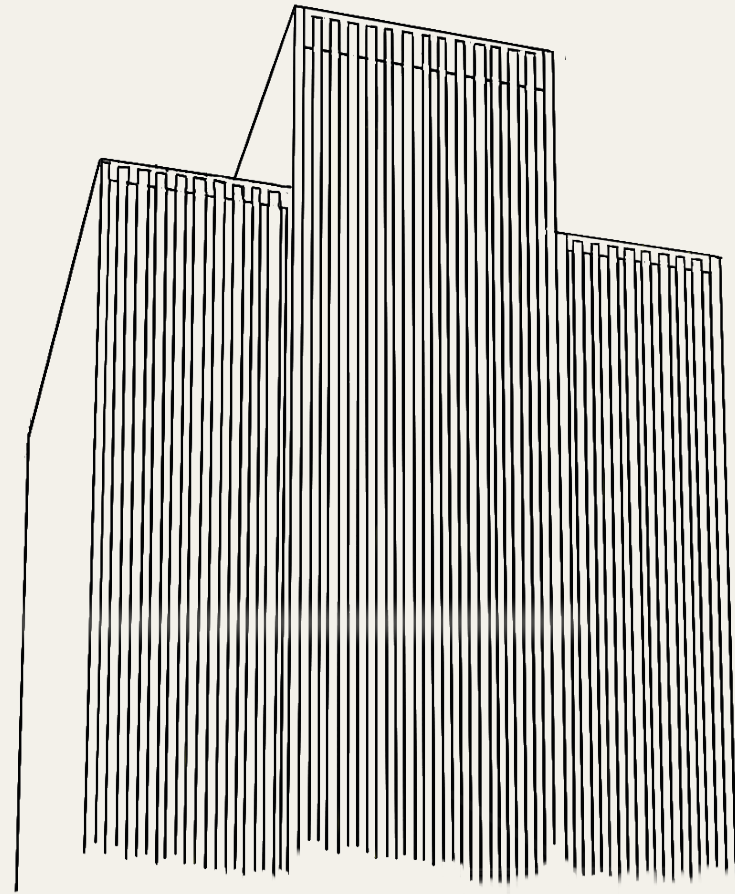


Church Office Building Remodel

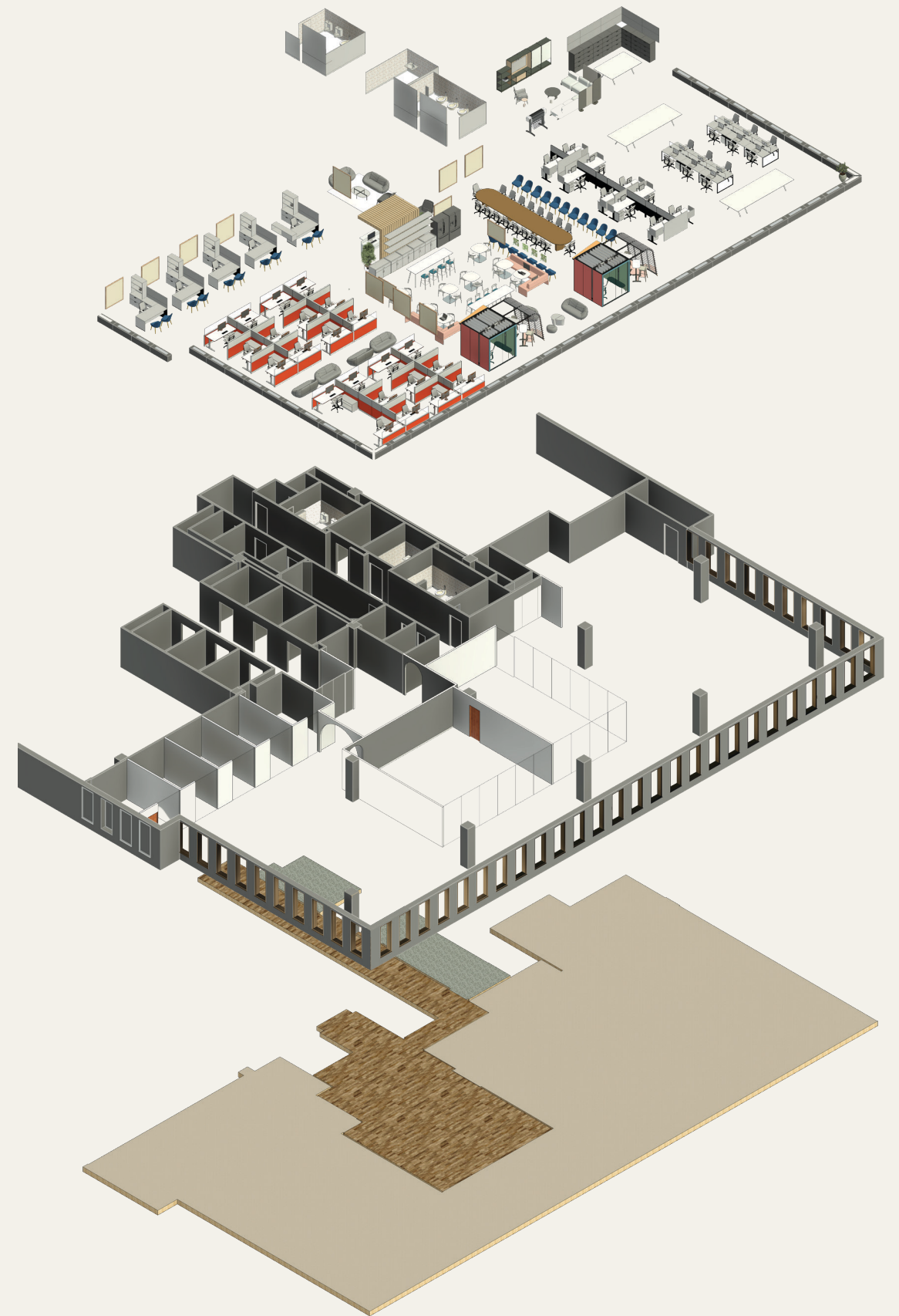


Project Summary

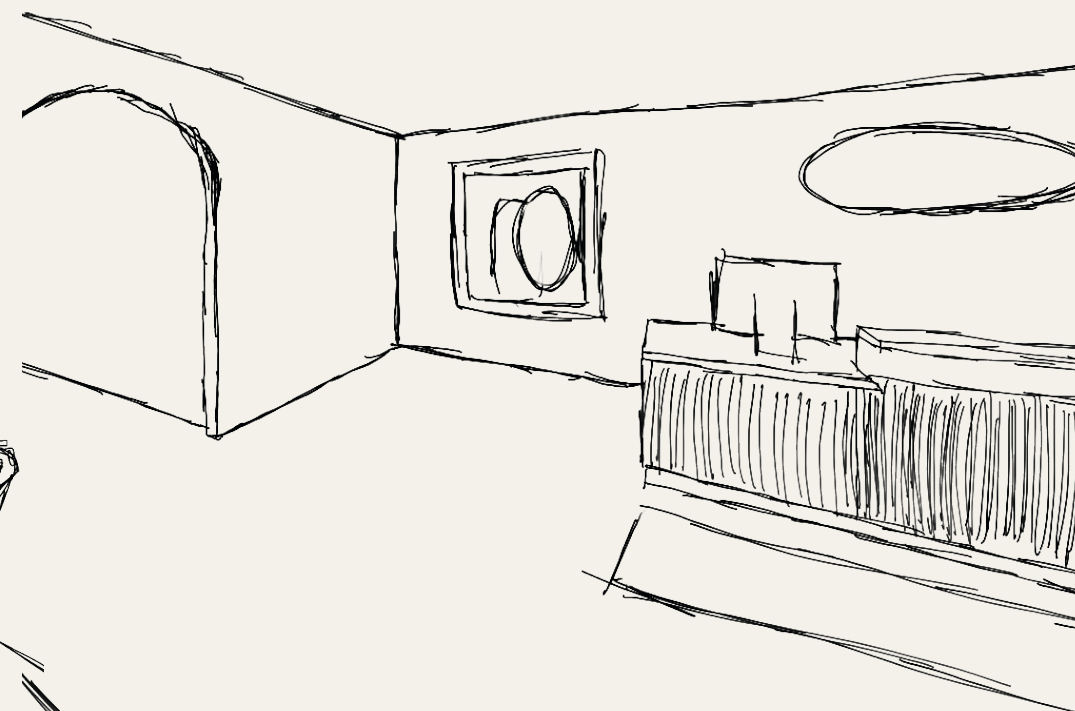
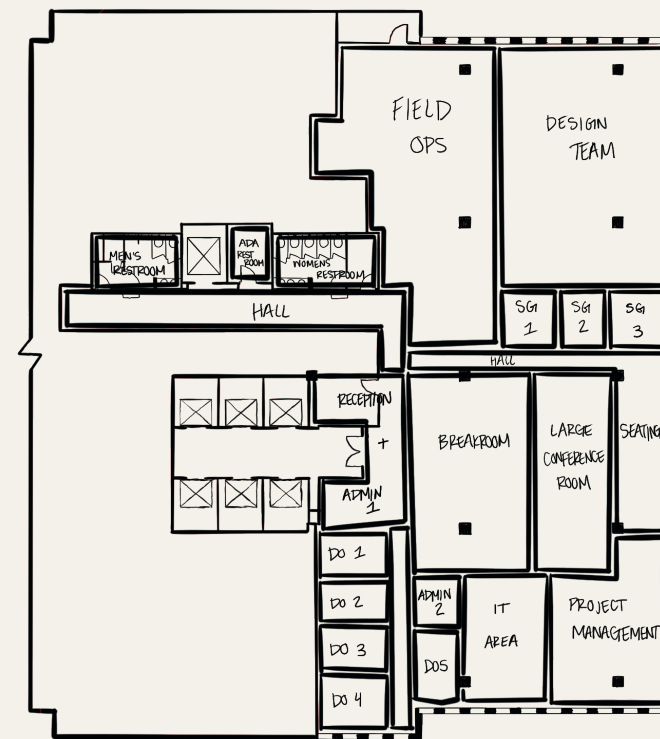
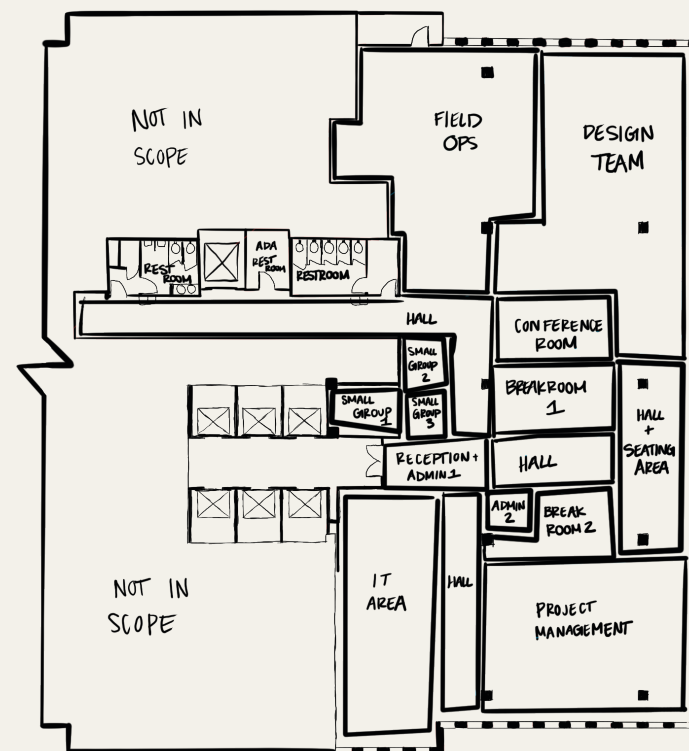
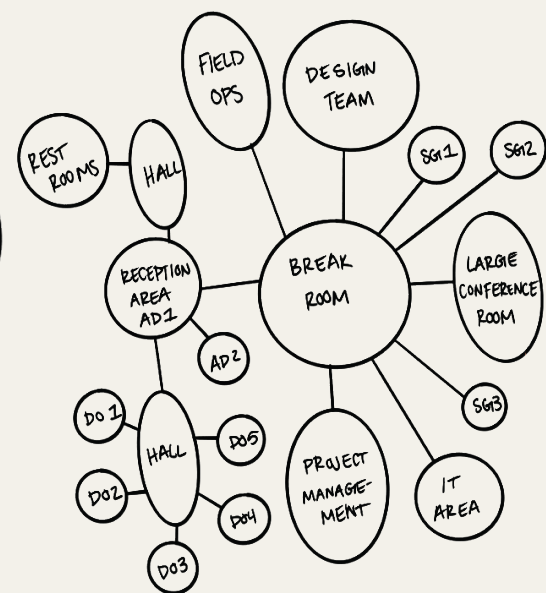
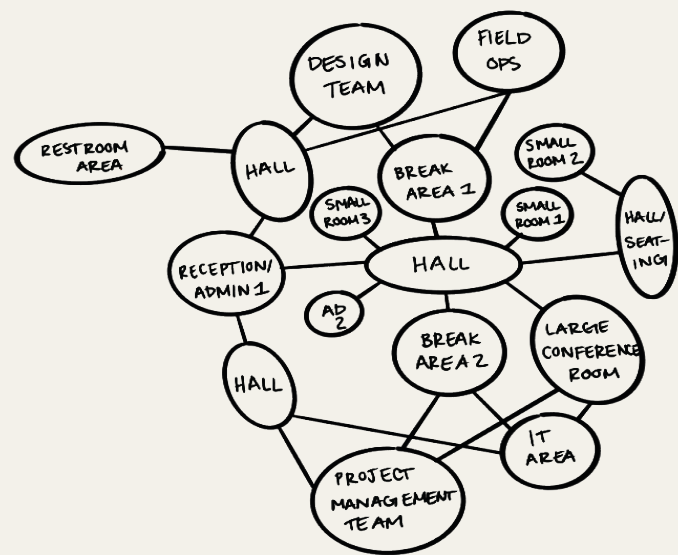
The Church Office Building 7th floor project is a full remodel of the commercial office space. The floor currently serves several teams and houses offices for floor admins and their offices. The renovation is intended to update the space to meet the needs of a modern work environment.

Design Statement

The current layout doesn't meet the needs of a modern work-space that accounts for hybrid work schedules. To address this problem, there will be less cubicles and they will be smaller, more collaboration spaces will be available, and there will be designated zones for each team.



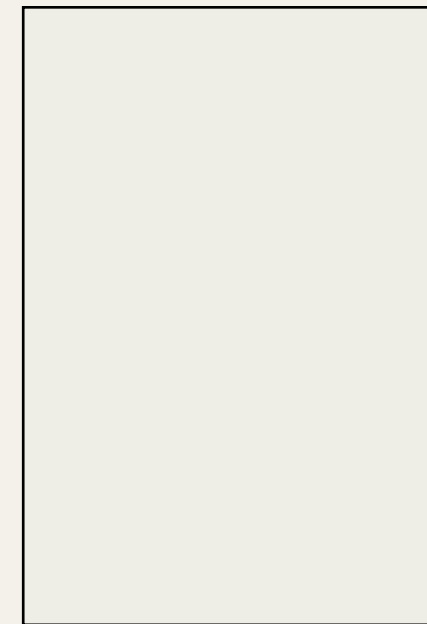
Church Office Building Remodel



Church Office Building Remodel



Church Office Building Remodel



Breakroom | 

Church Office Building Remodel



Conference Room | **HH**

Bountiful House Remodel

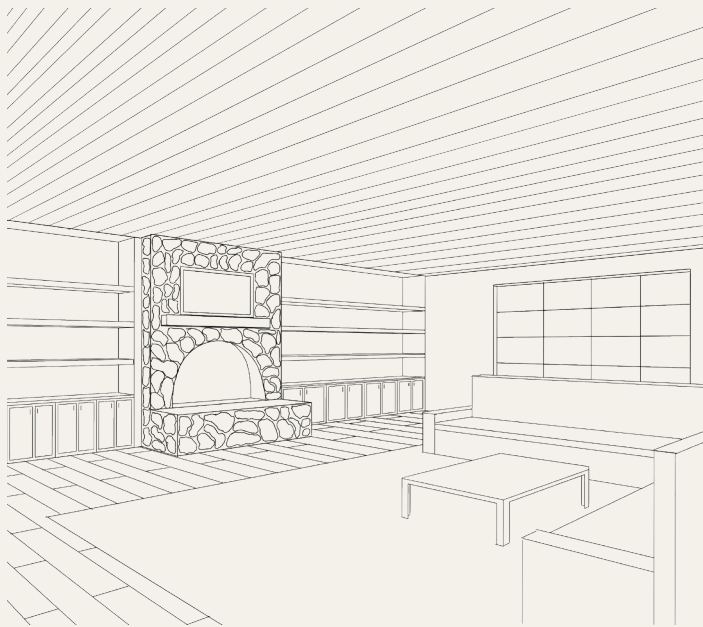
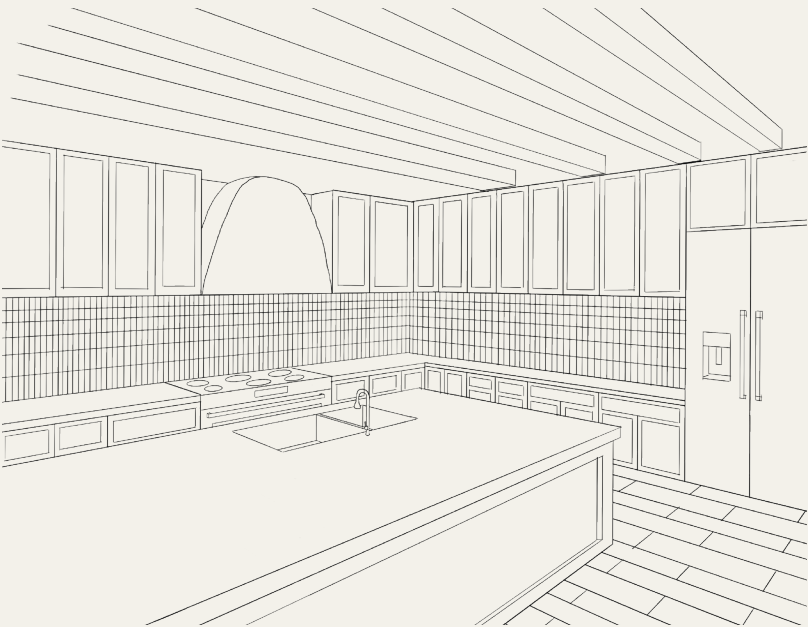


Design Statement

This project reimagines a mid-century modern house in Bountiful, Utah and transforms it into a French country home with modern vintage hints. The design combines the warmth and charm of French country aesthetics with the timeless appeal of vintage elements, creating a home that is both elegant and family-friendly.

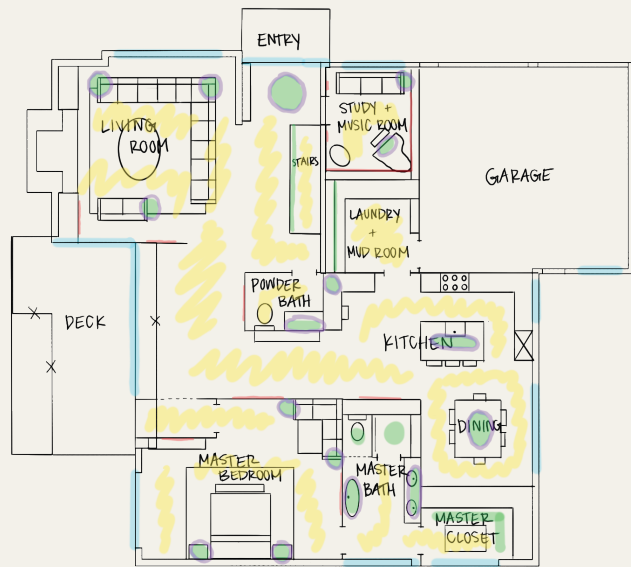
Client Profile

The Sabin family has recently moved to Bountiful, Utah and have been living in a rental until they stumbled upon a 4,069 square foot mid-century modern house. They feel that it will make the perfect home after renovating to update and personalize the space. Jake works in Salt Lake at an investment firm, while Allie stays home and takes care of their 3 kids. Their kids range from 1 to 8 years old, so they are hoping to have their home be a place where when their kids grow up they will want to bring their friends over. Jake and Allie are wanting to make their home serve all the many needs of a growing family.

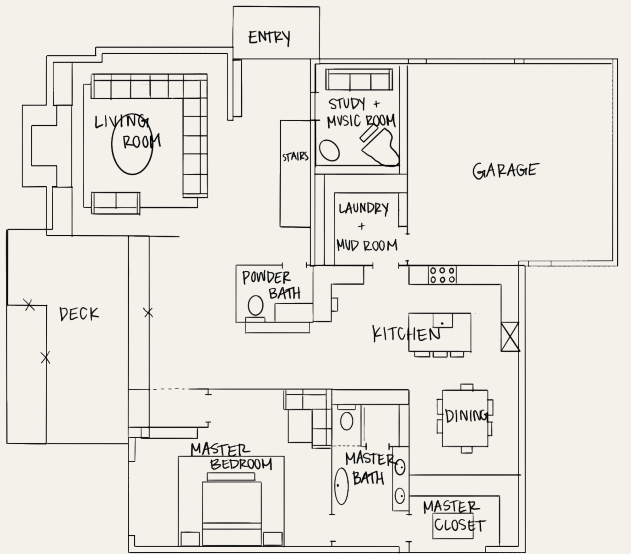


Bountiful House Remodel

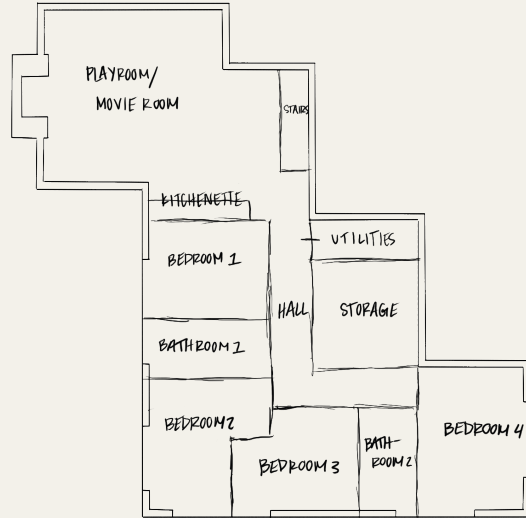
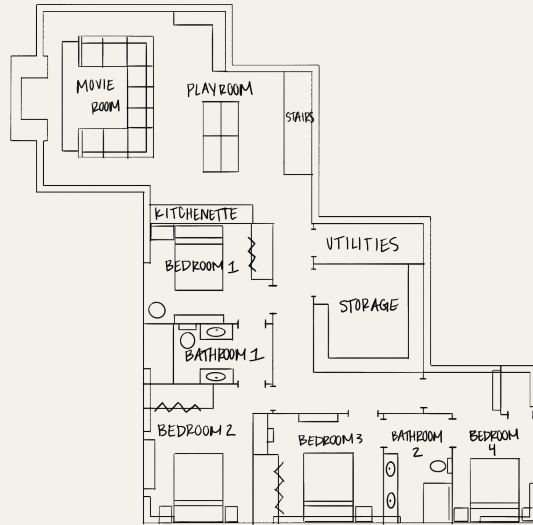
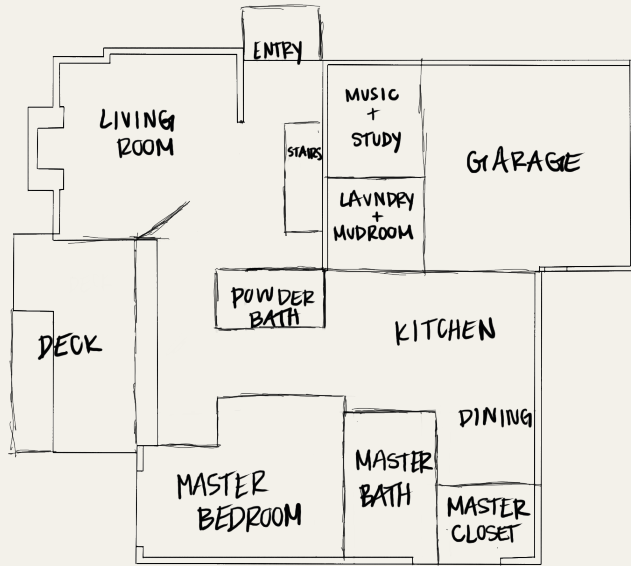
Lighting Layers



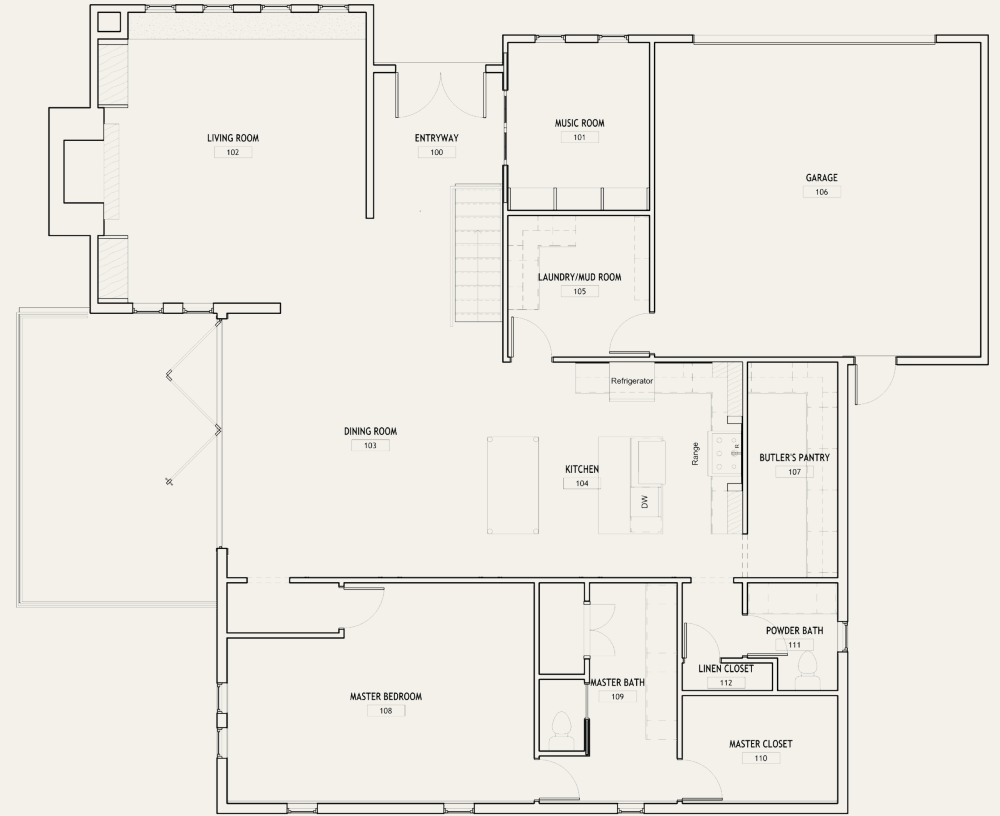
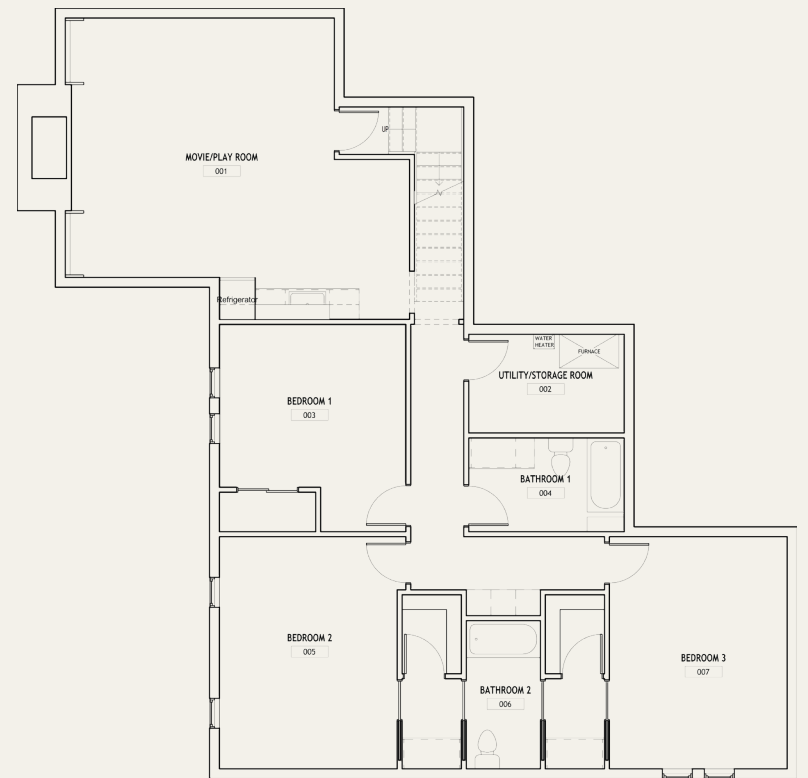
Space Planning



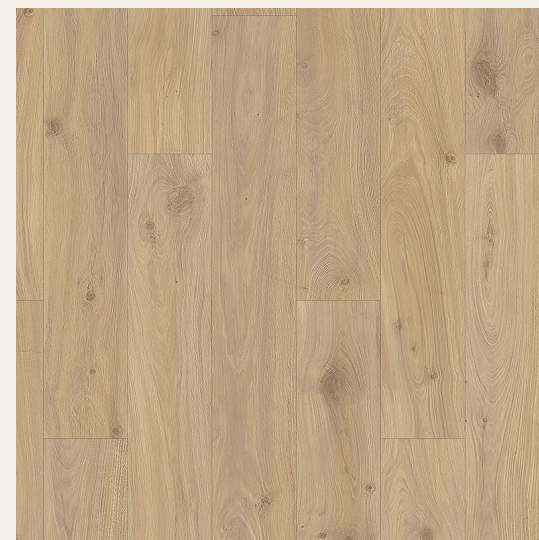
Block Diagrams



Final Floor Plans



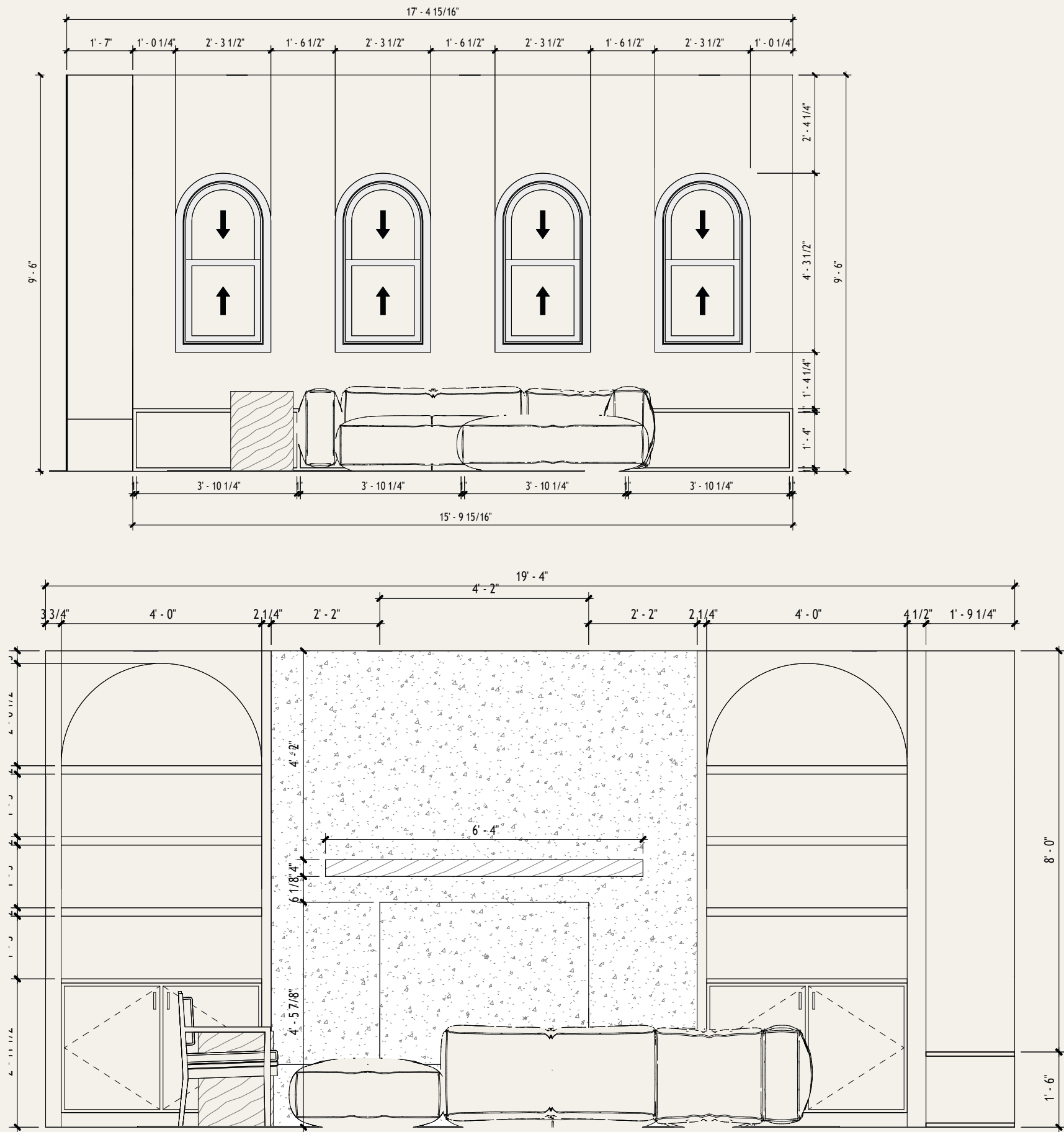
Bountiful House Remodel



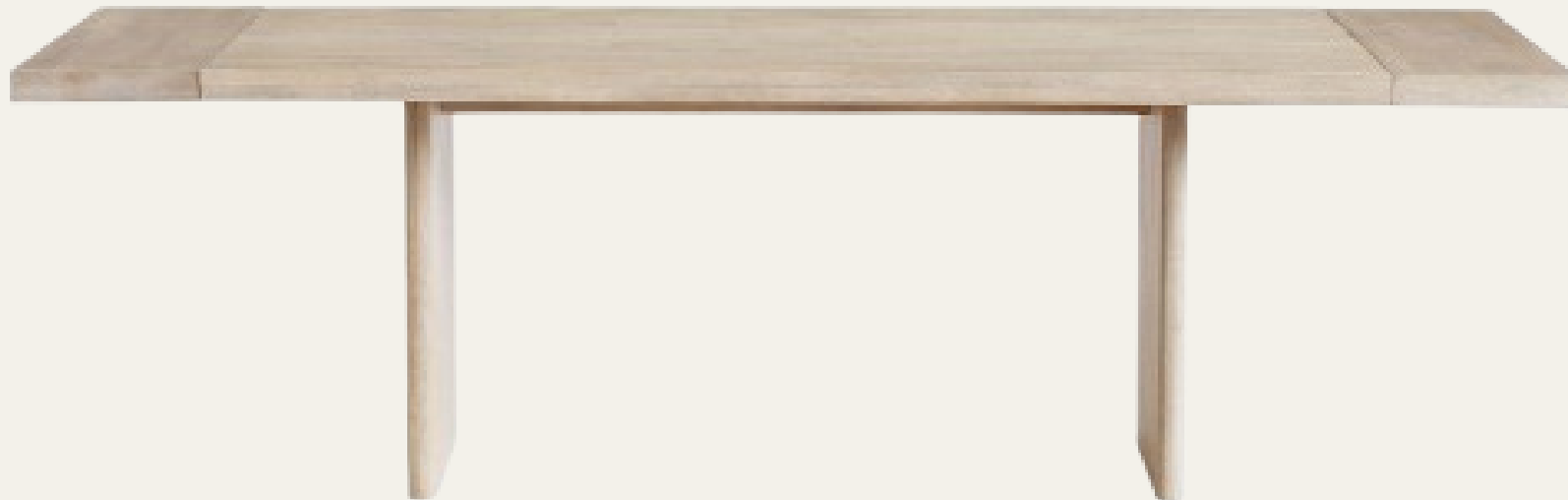
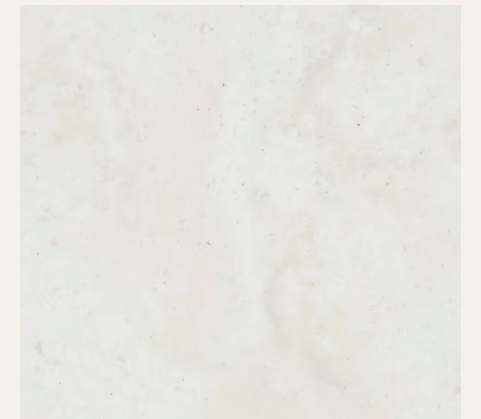
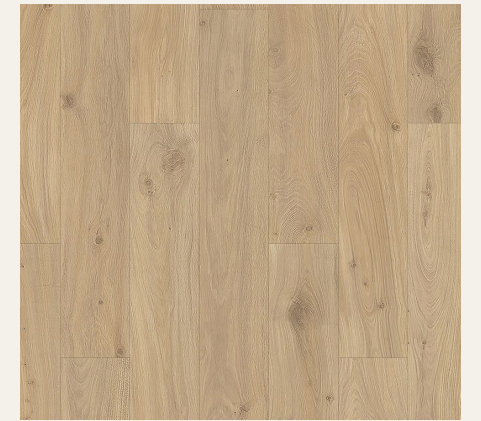
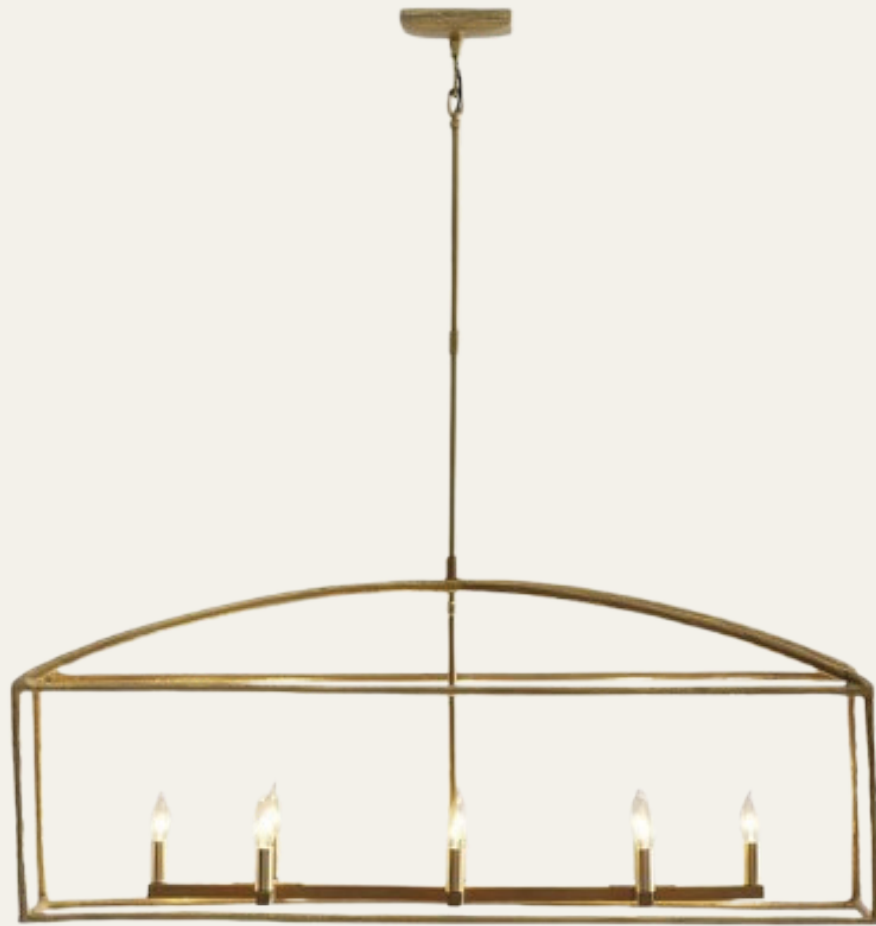
Bountiful House Remodel



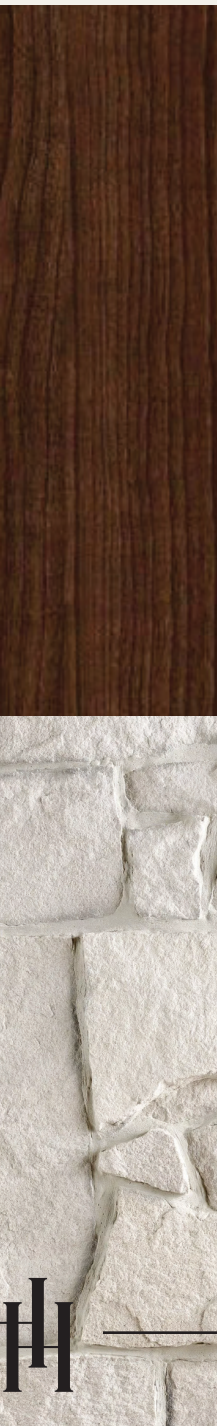
Bountiful House Remodel



Bountiful House Remodel



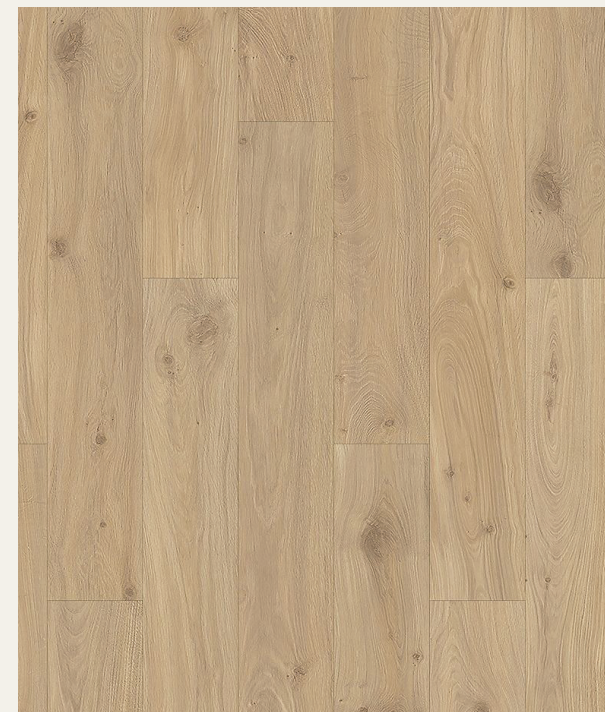
Bountiful House Remodel



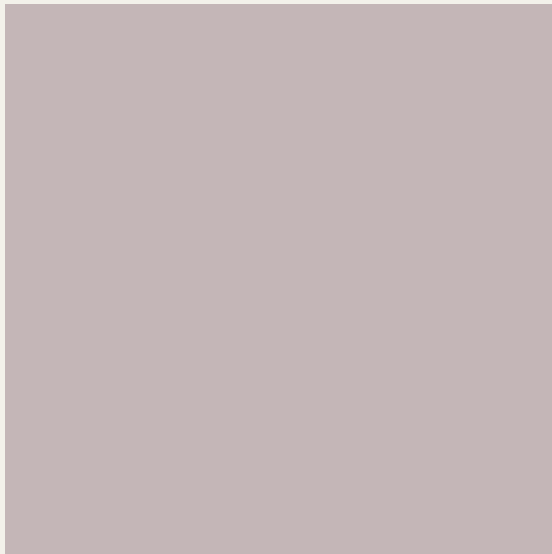


Bountiful House Remodel

Bountiful House Remodel



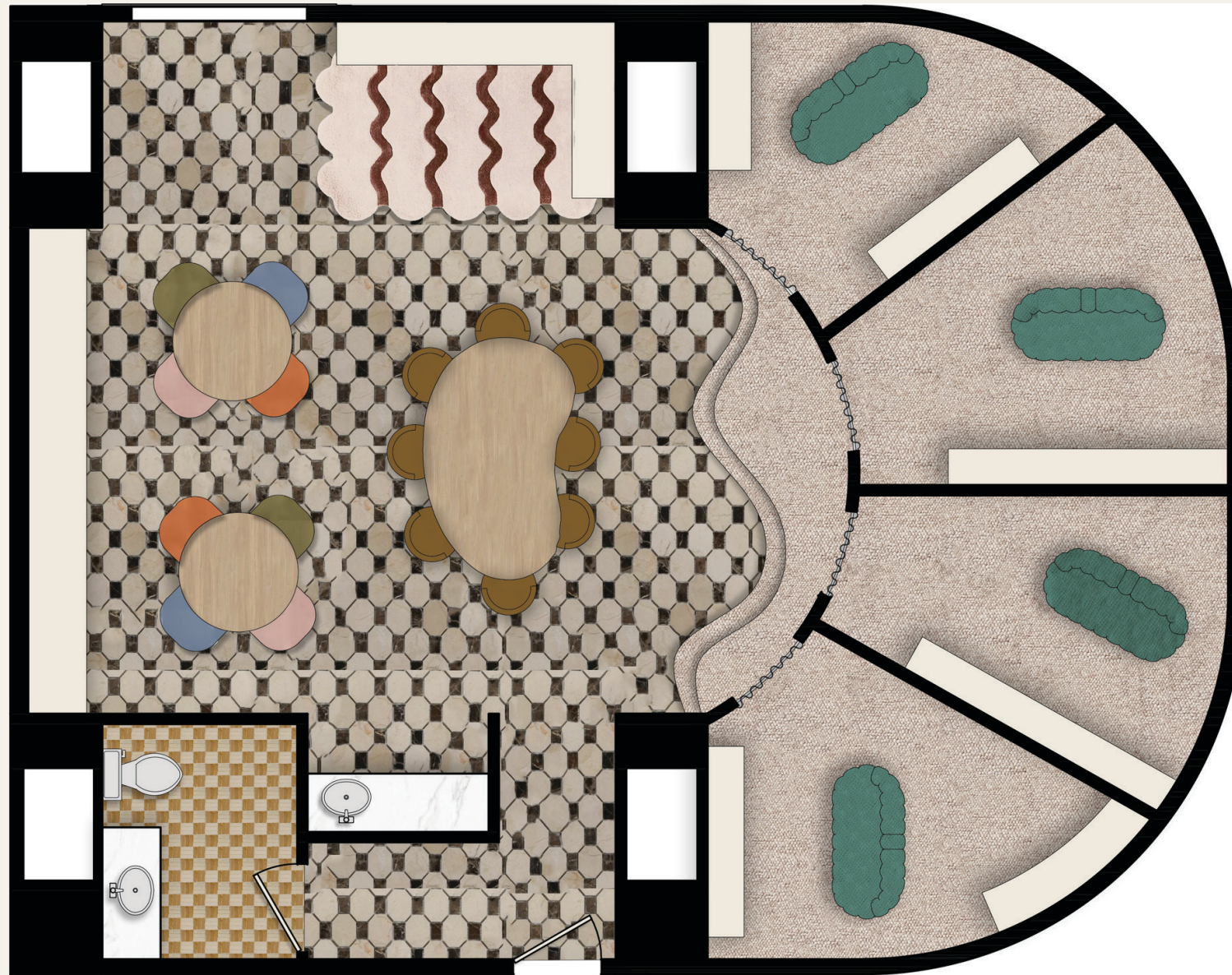
Bountiful House Remodel



Cruise Ship Teen Hangout

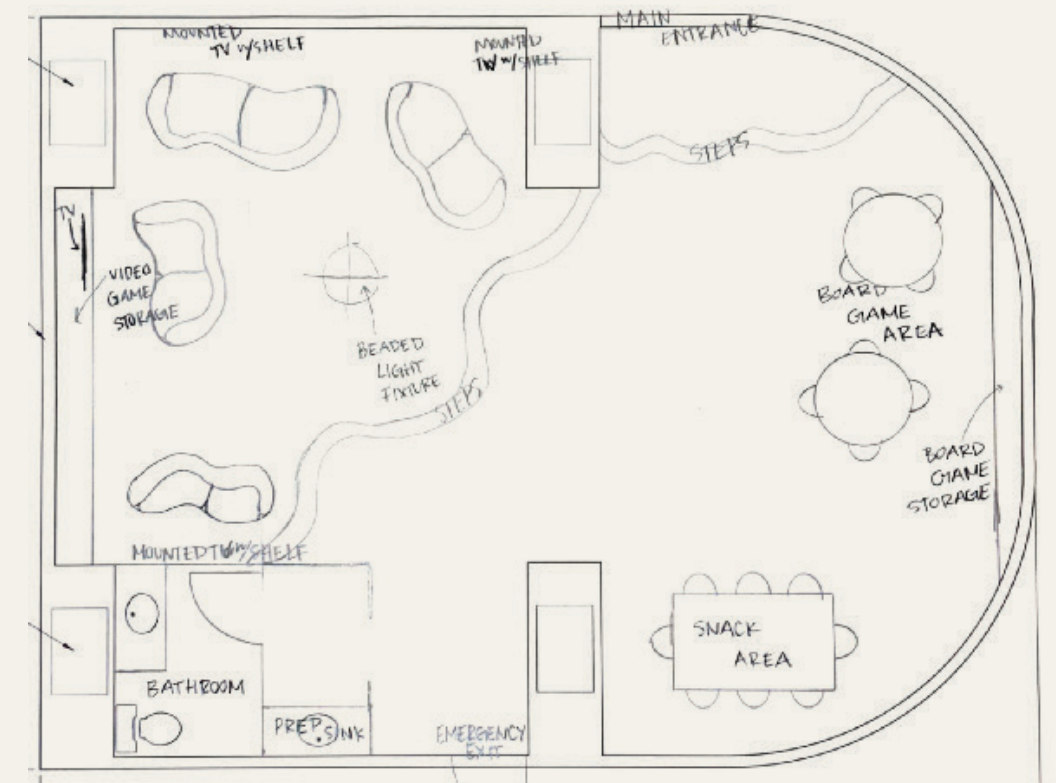
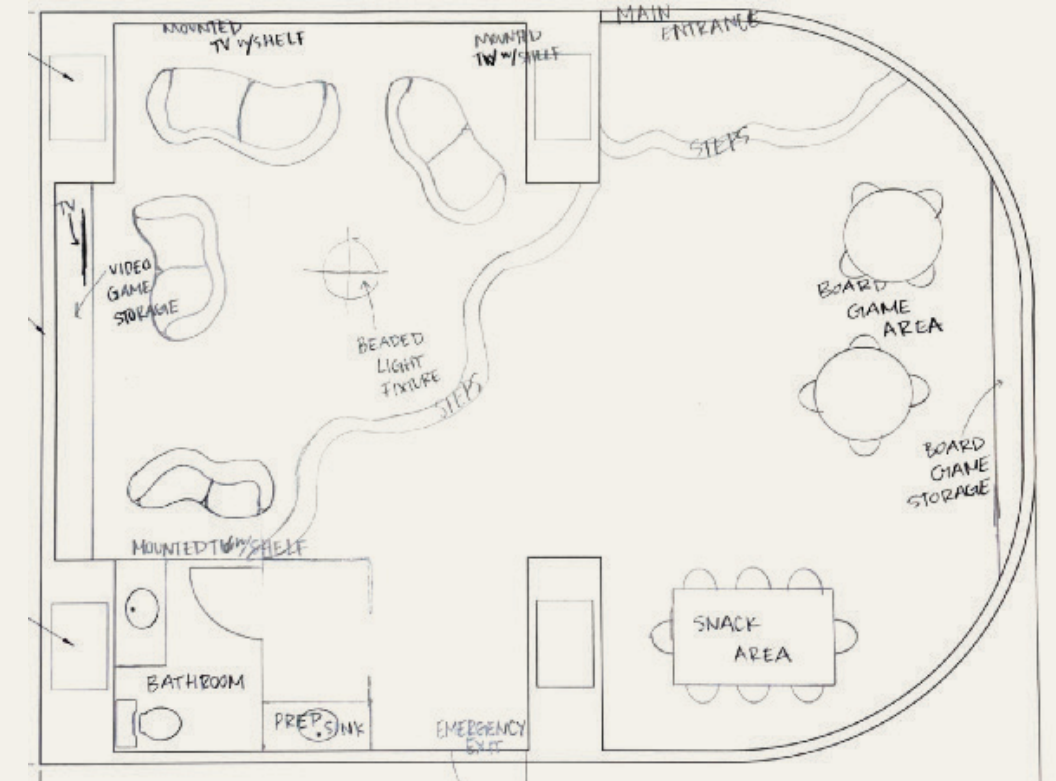


Cruise Ship Teen Hangout

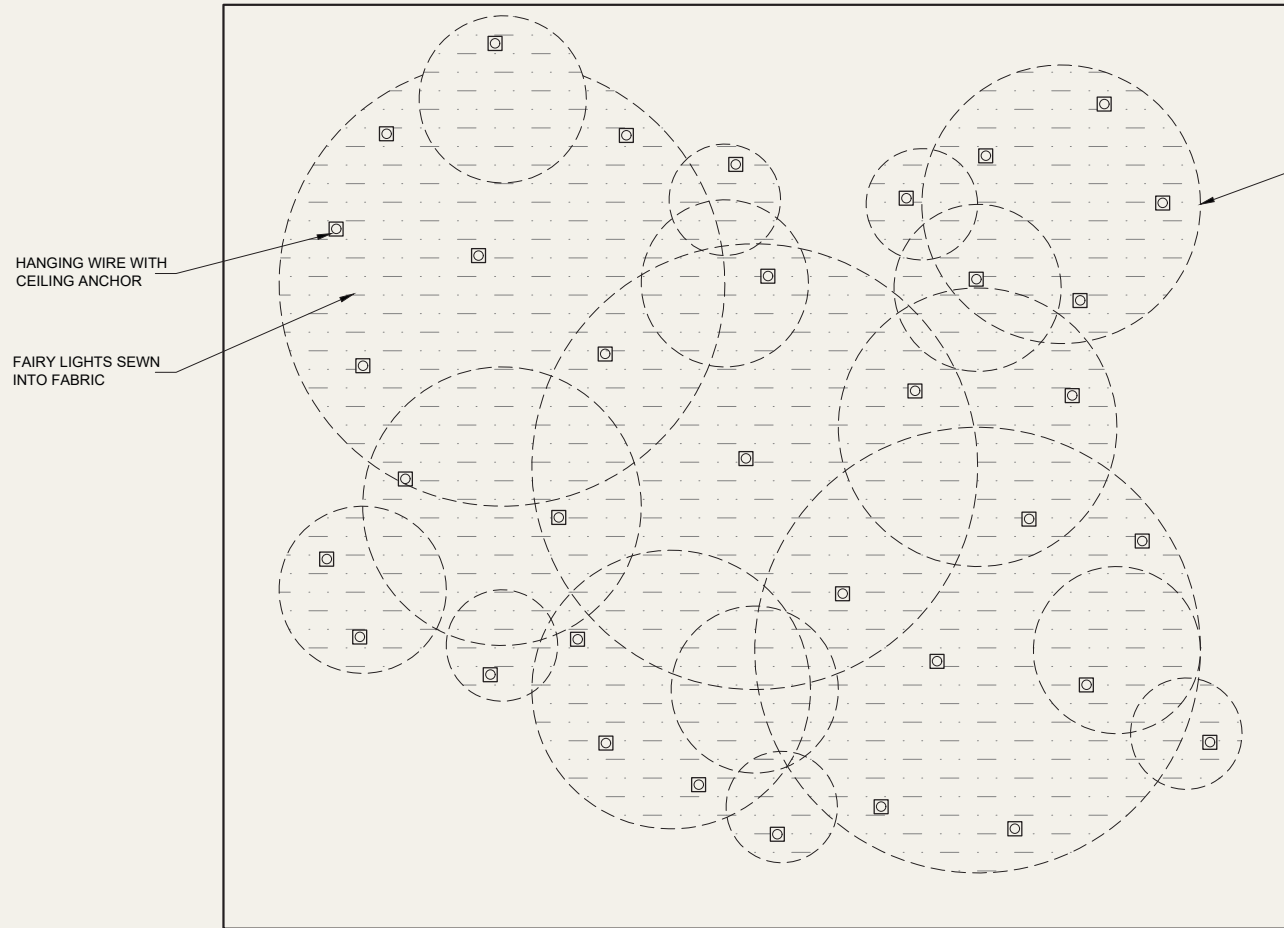
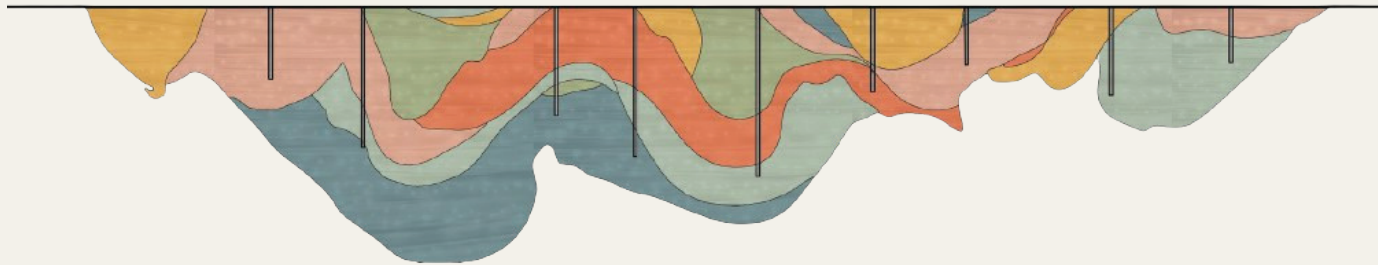


Project Summary

This project involved creating a dynamic and interactive lighting and interior design concept for a children's and teen play area aboard a cruise ship. The design integrates functional and creative lighting strategies to enhance the atmosphere of different activity zones, including video gaming, board games, and snack areas. A custom-designed light fixture was developed to serve as a focal element, adding originality and character to the space. Through careful planning of circulation, code-compliant exits, and integration of plumbing and storage needs, the final design balances fun, safety, and innovation to deliver an engaging onboard experience.

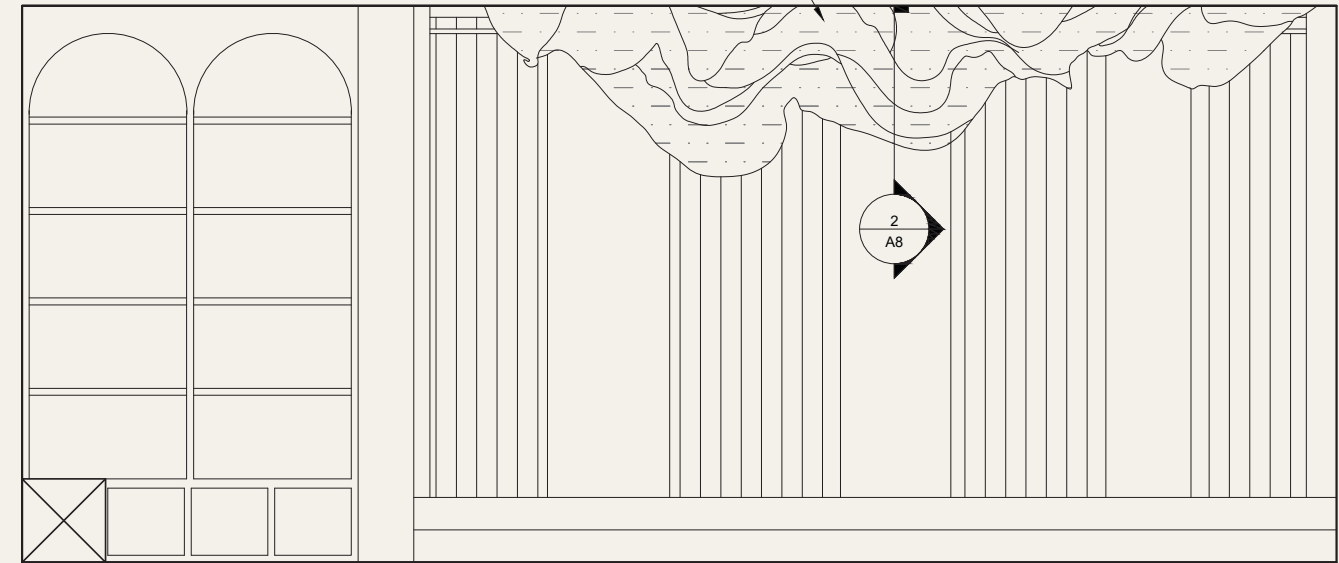


Cruise Ship Teen Hangout



1 REFLECTED FLOOR PLAN

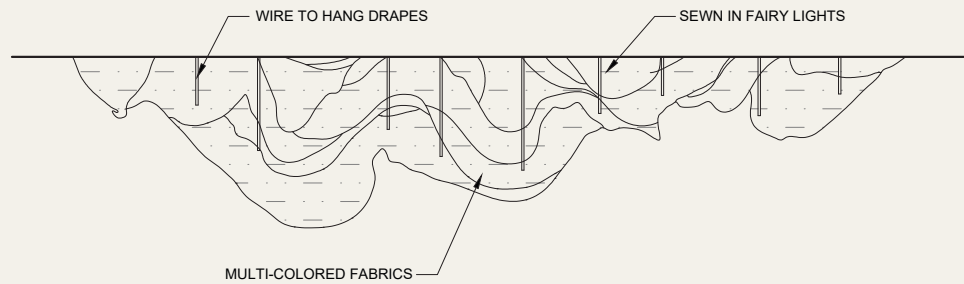
SCALE 1/2" = 1'-0"



1 EAST ELEVATION

SCALE 1/2" = 1'-0"

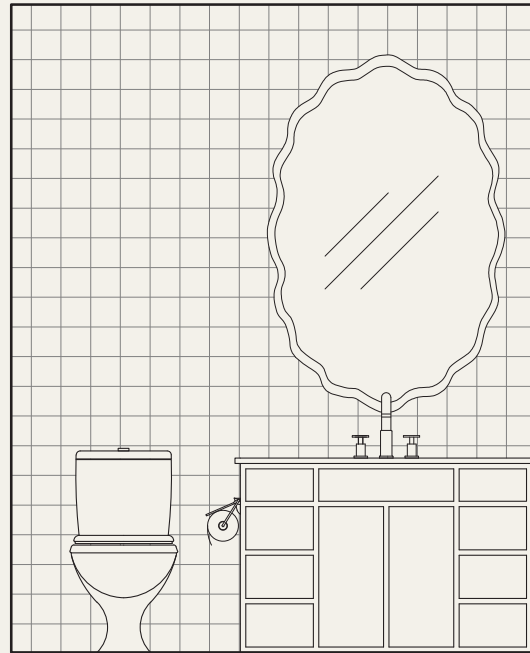
ROUGH OUTLINE OF
DRAPED FABRIC



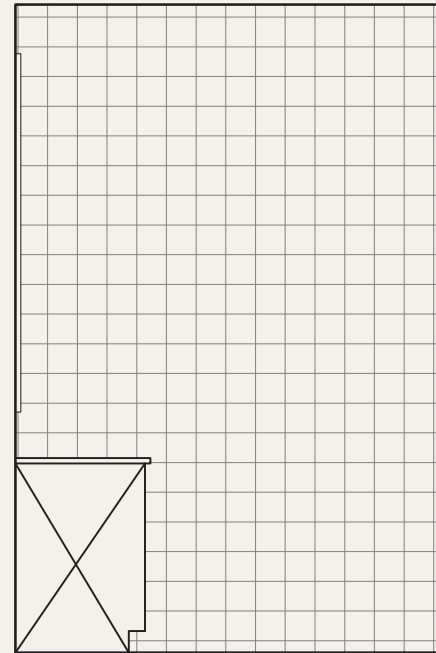
2 SECTION FROM EAST ELEVATION

SCALE 1/2" = 1'-0"

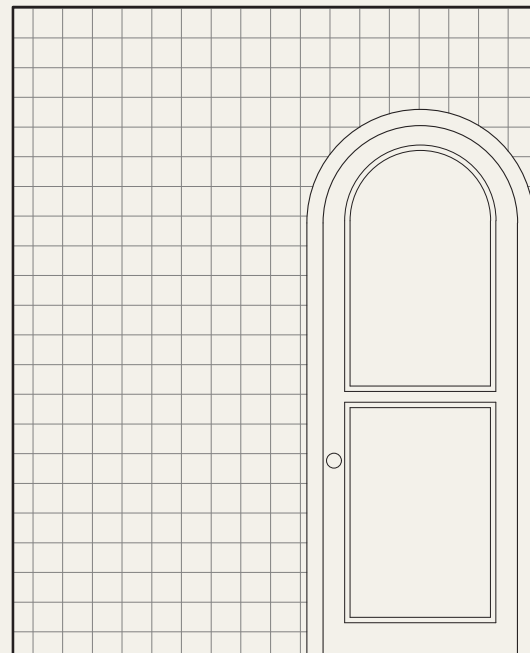
Cruise Ship Teen Hangout



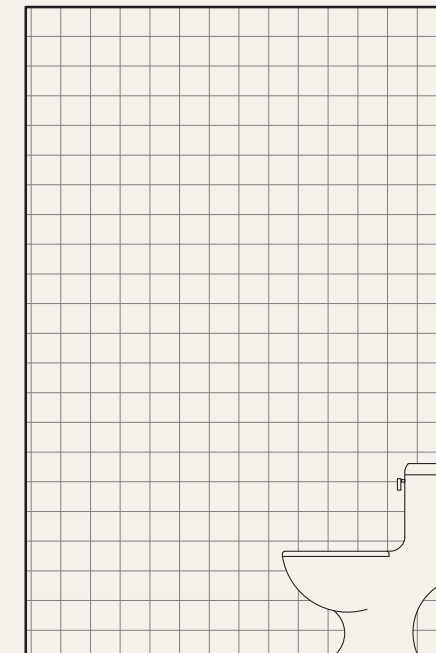
1 WEST RESTROOM ELEVATION
SCALE 1/2" = 1'-0"
0 2' 4'



2 NORTH RESTROOM ELEVATION
SCALE 1/2" = 1'-0"
0 2' 4'

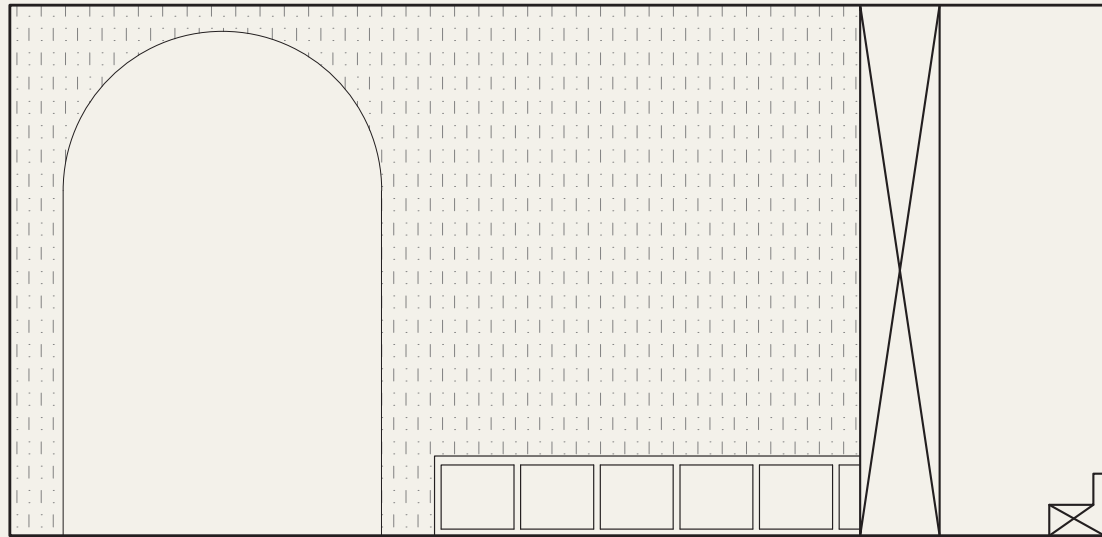


3 EAST RESTROOM ELEVATION
SCALE 1/2" = 1'-0"
0 2' 4'



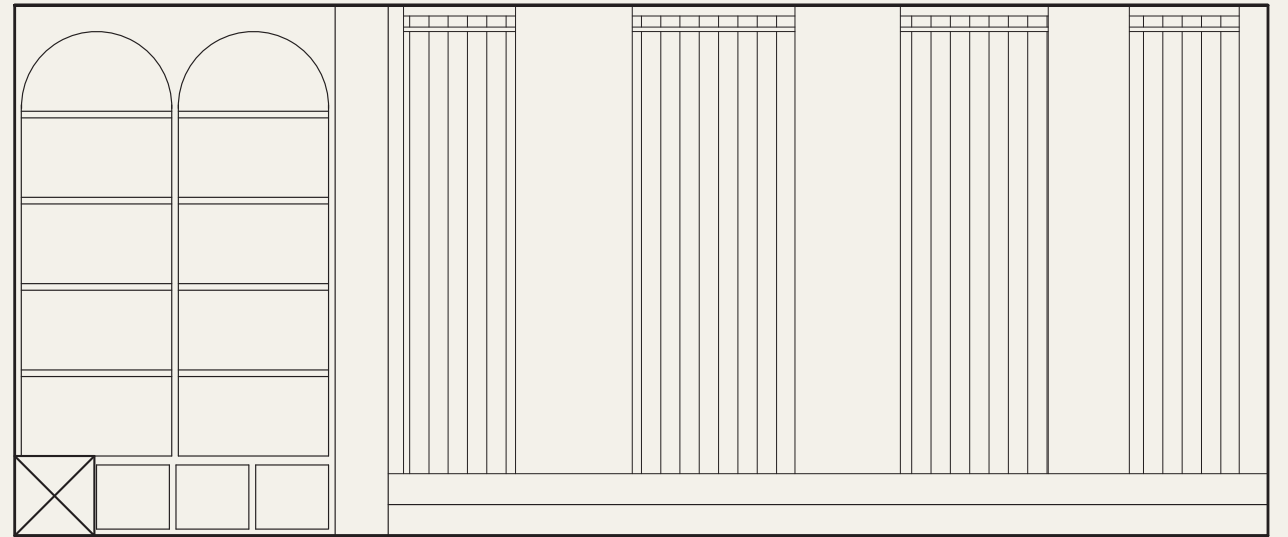
4 SOUTH RESTROOM ELEVATION
SCALE 1/2" = 1'-0"
0 2' 4'

Cruise Ship Teen Hangout



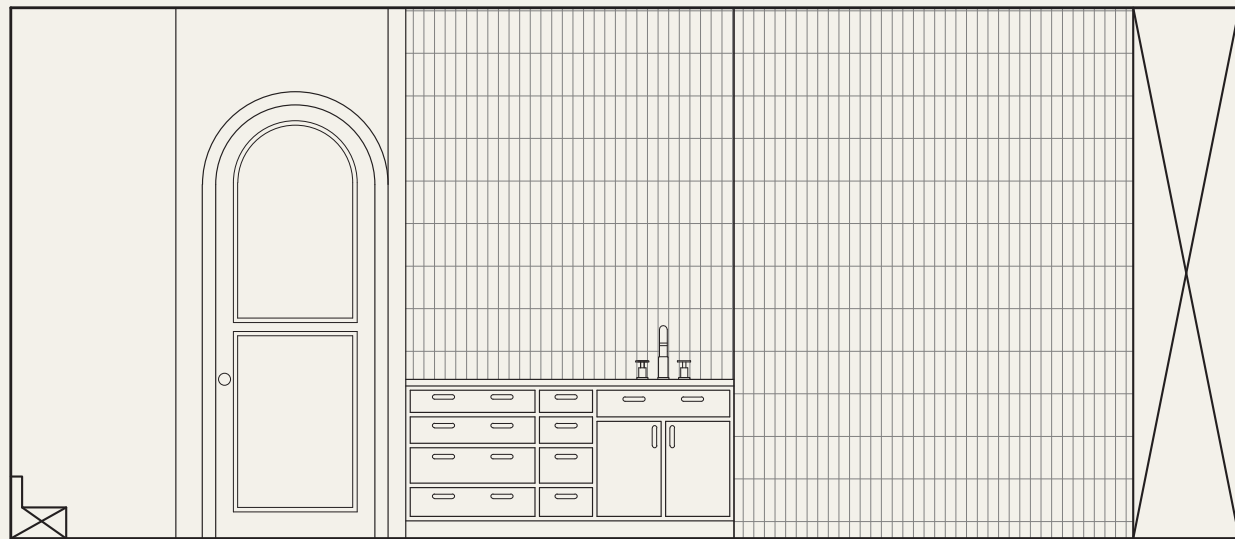
1 NORTH ELEVATION

SCALE 3/8" = 1'-0"
0 8' 16'



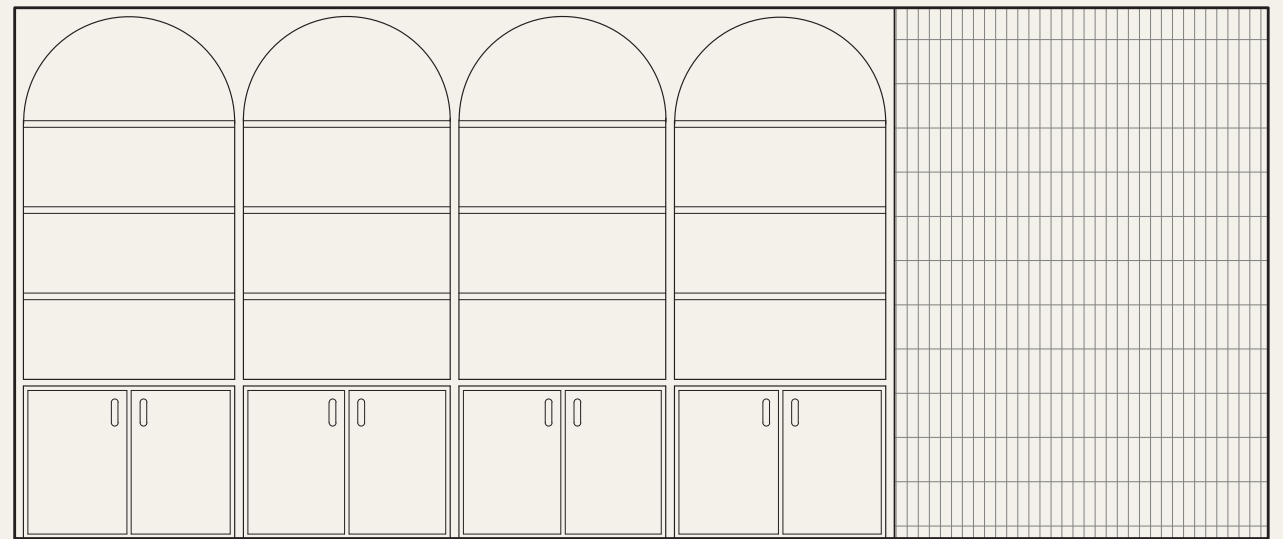
2 EAST ELEVATION

SCALE 3/8" = 1'-0"
0 8' 16'



3 SOUTH ELEVATION

SCALE 3/8" = 1'-0"
0 8' 16'



4 WEST ELEVATION

SCALE 3/8" = 1'-0"
0 8' 16'