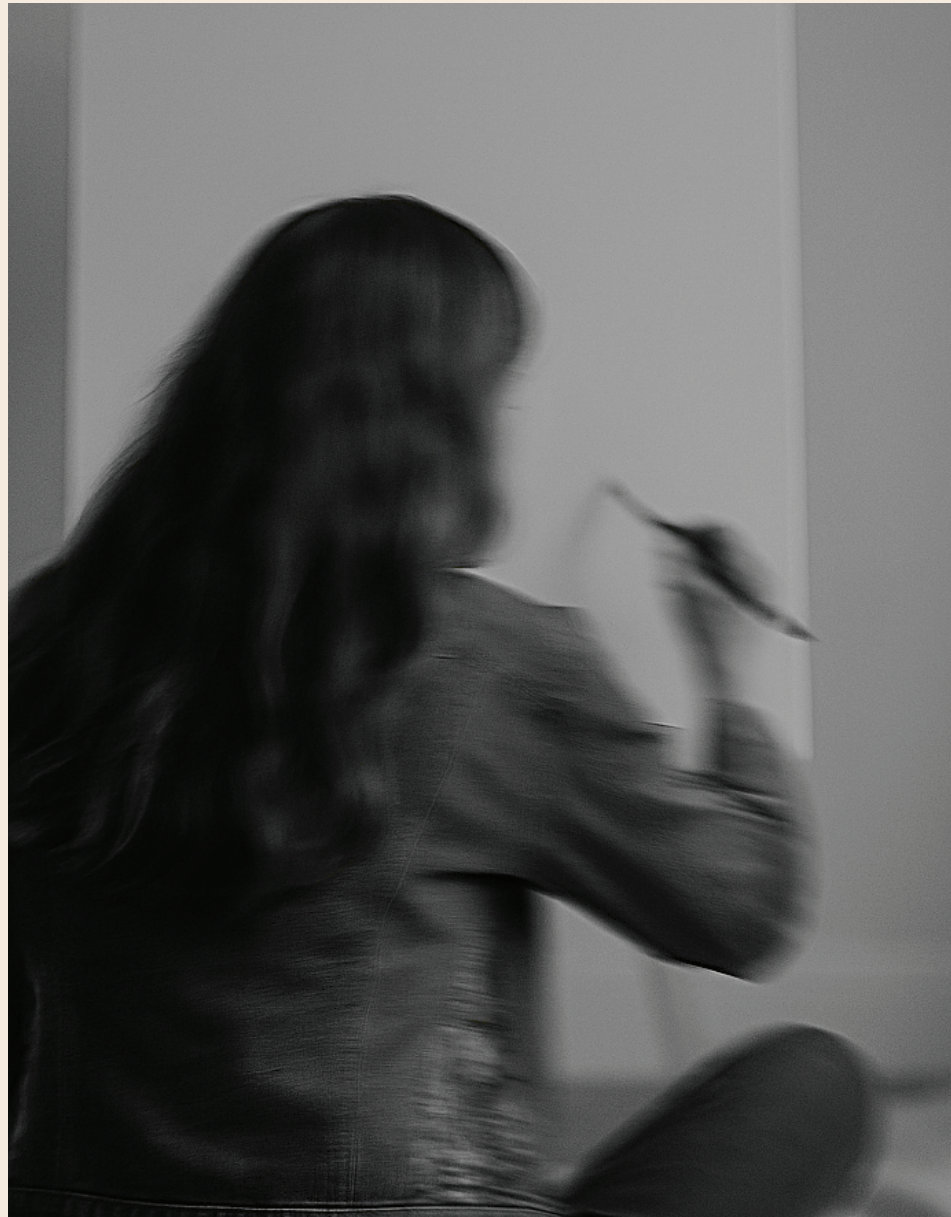




Kayli Tombarge

INTERIOR DESIGN PORTFOLIO





A dedication to myself-  
Because without myself, none of this would  
have been possible.

## CHURCH OFFICE BUILDING

### 7th Floor - Hybrid Workspace

Nestled in the heart of downtown Salt Lake City, the seventh floor of the Church Office Building is being reimaged—not just as a workplace, but as a place to land, linger, and create. While the structure remains rooted in the 1970s, this remodel invites warmth, movement, and meaning into a space, where modern work meets quiet inspiration.

The design balances openness with intimacy—morning light spills across collaborative tables. Quiet alcoves offer space to focus, and soft textures bring a sense of calm to the rhythm of the workday. Adjacent zones connect the Design and Field Operations teams, while tailored areas support the focused needs of IT and Project Management.

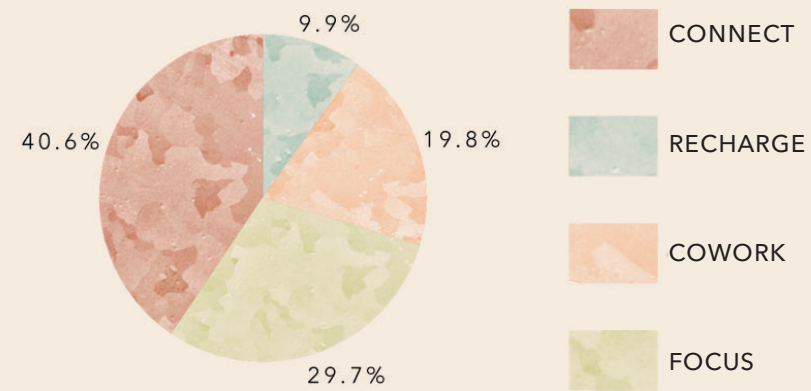
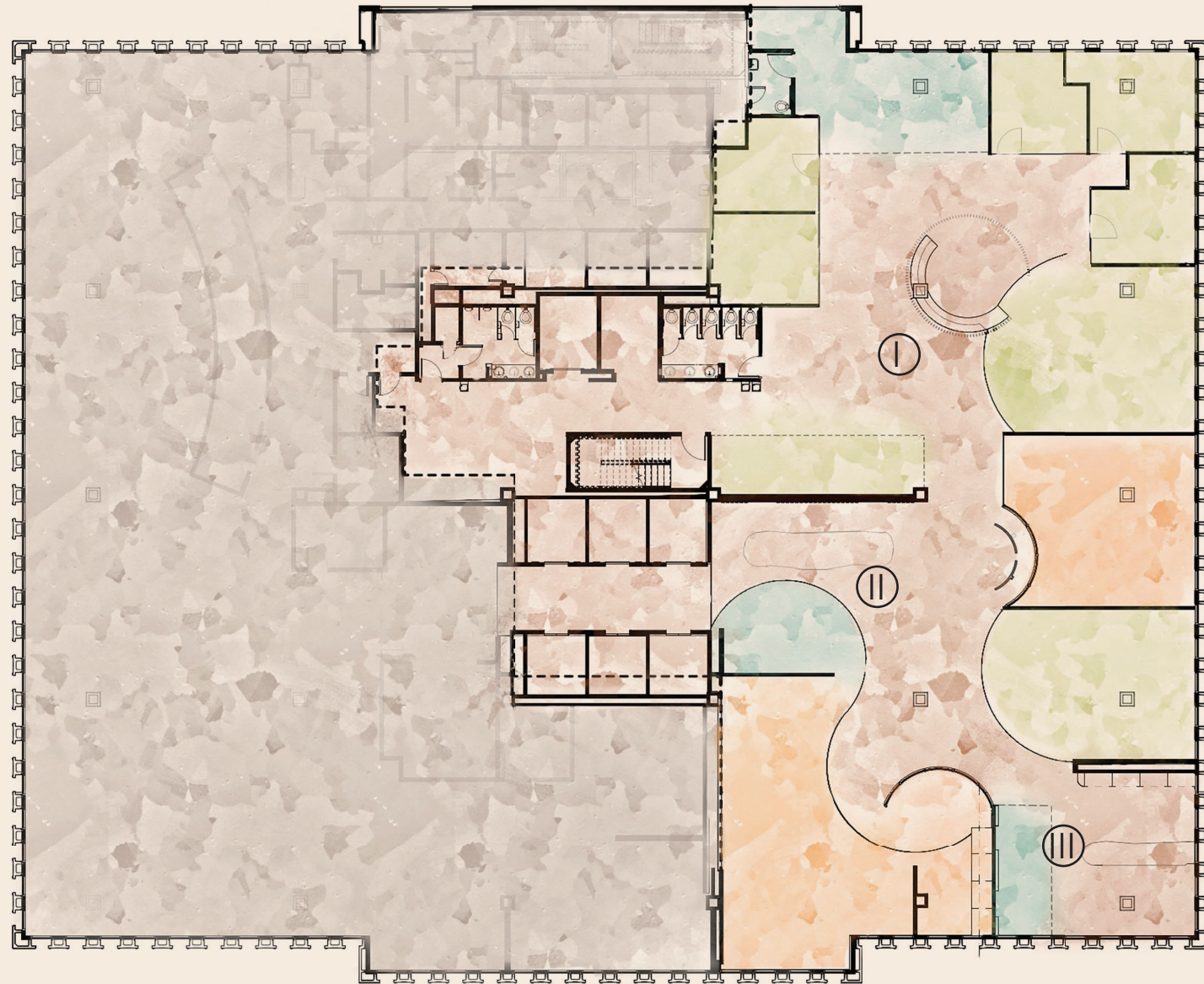
With tucked-away touchdown spots, performance materials, and flexible spaces, it's not just a remodel—it's a reset, designed for the rhythm of modern work.

01

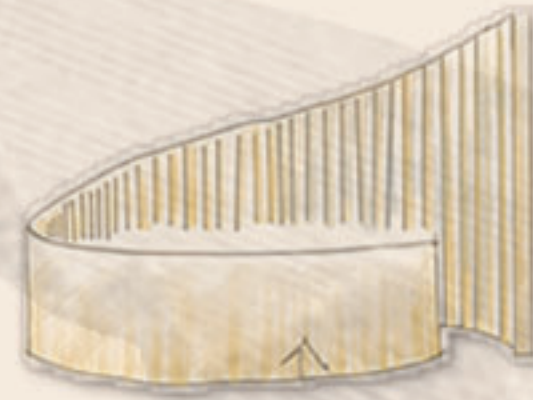




# PRELIMINARY SPACE PLAN



I TRANSACTION DESK



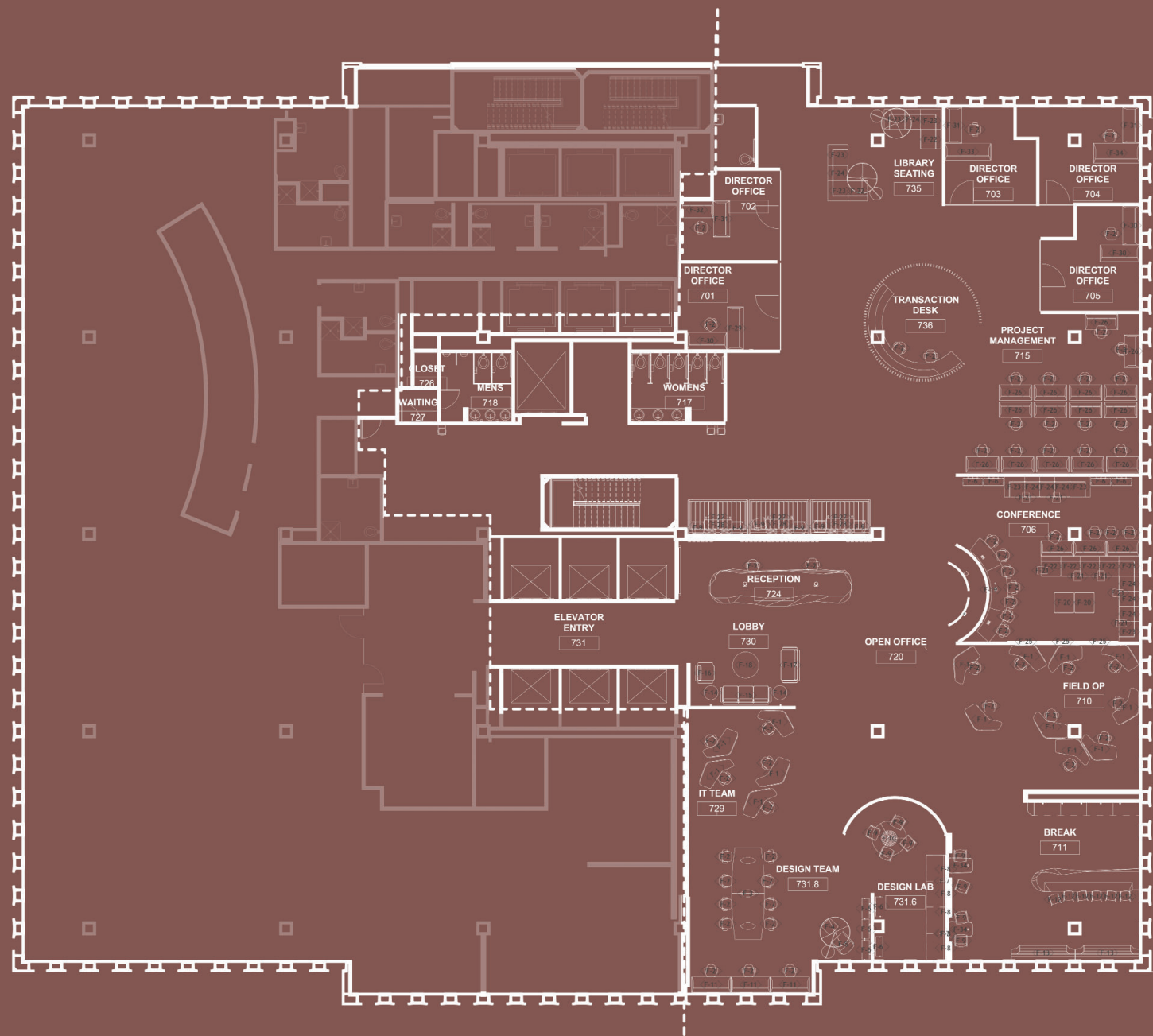
II RECEPTION LOBBY



III BREAK ROOM







FURNITURE PLAN

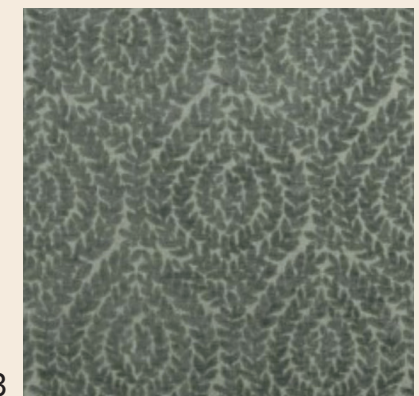
## KEY MATERIALS



1



2



3



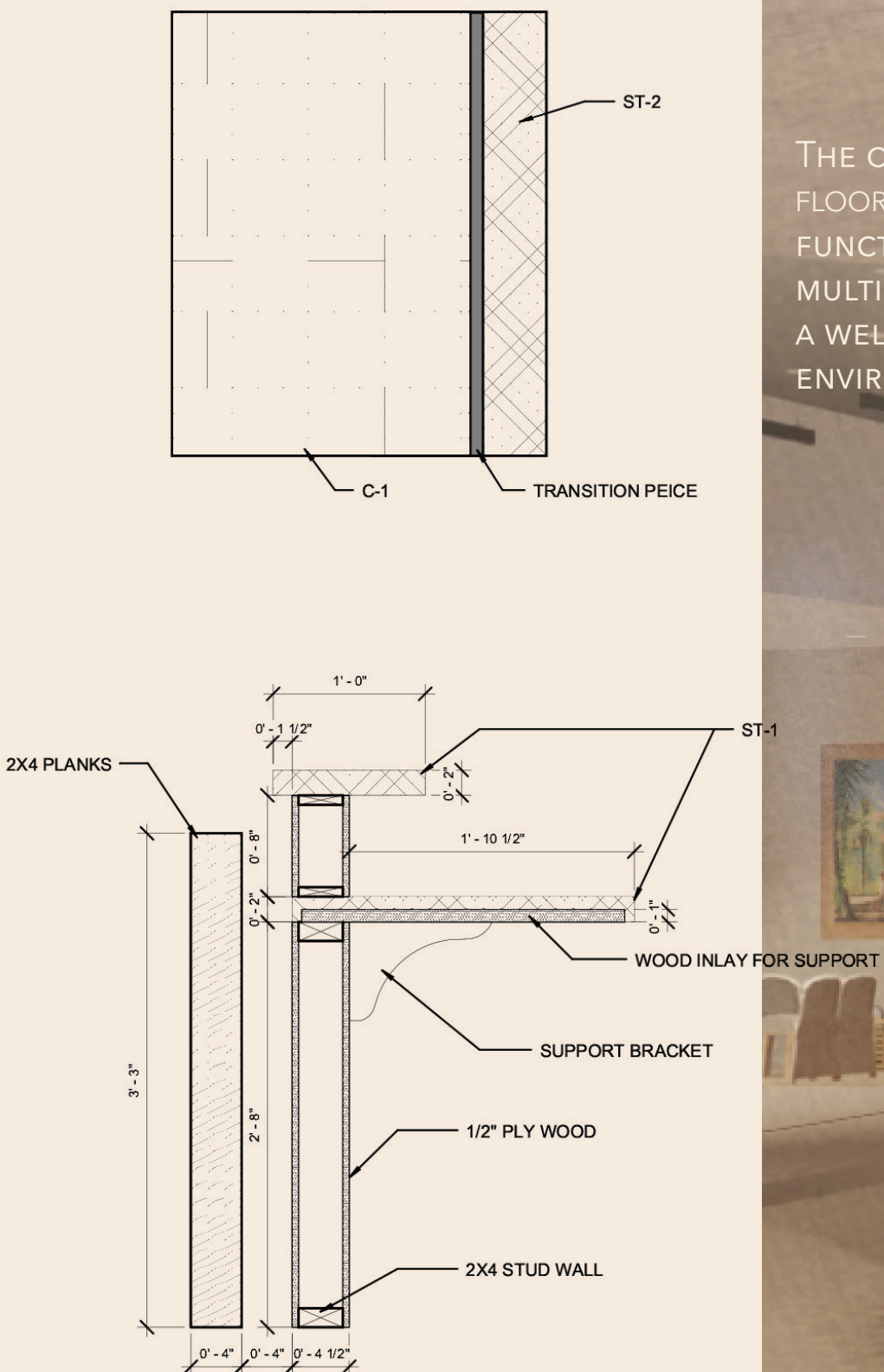
4



5

1. MARBLE USED IN LOBBY AND BREAKROOM
2. ERGONOMIC CHAIRS
3. LOBBY SEATING
4. CONFERENCE CHAIRS
5. SECTIONAL SEATING





THE CURVED DESIGN FOUND IN THE FLOORING AND DESK MAXIMIZES FUNCTIONALITY BY ACCOMMODATING MULTIPLE USERS WHILE CREATING A WELCOMING AND ENGAGING ENVIRONMENT.

PRECISELY SPACED WOODEN DOWELS FORM A RHYTHMIC, SCULPTURAL PATTERN THAT TRANSFORMS THE DESK FROM A SIMPLE WORKSPACE INTO A STRIKING PIECE OF CRAFTSMANSHIP AND ART.







THE LOBBY OFFERS A SERENE AND WELCOMING ATMOSPHERE, ANCHORED BY A STRIKING MARBLE-HEWN RECEPTION DESK THAT SERVES AS BOTH A FUNCTIONAL CENTERPIECE AND A STATEMENT OF CRAFTSMANSHIP. COMFORTABLE, THOUGHTFULLY ARRANGED SEATING INVITES GUESTS TO RELAX, WHILE A PROMINENT IMAGE OF CHRIST CREATES A CLEAR FOCAL POINT, ADDING DEPTH AND MEANING TO THE SPACE.



## WHISPERING WOODS

Cruise Ship - Childrens Sanctuary at Sea

Inspired by the alpine forests of Utah and the misty woodlands of the Pacific Northwest, Whispering Woods brings the calming magic of the forest aboard a cruise ship. Designed to support imaginative play and emotional regulation—especially for children with ADHD—the space draws on research around forest bathing and its positive effects on focus, mood, and sensory balance.

Children enter through a cascading waterfall into an enchanted woodland playscape. At its center stands a towering redwood tree made from recycled materials, surrounded by glowing mushrooms, a flowing stream, and layered climbing zones. Expansive windows frame ocean views, blending land-inspired design with the vastness of the sea.

Though this floating forest cannot receive LEED certification due to its impermanent setting, the project applies LEED-informed principles—using sustainable materials, water-conscious features, and energy-efficient lighting. The palette and textures were directly inspired by forest photography captured in Utah, grounding the design in real natural beauty.



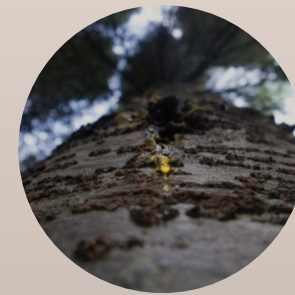


Field research in the Wasatch Mountains captured natural light, texture, and form through original photography. These observations directly informed the project's biophilic design elements.

Photography:  
Canon Canon EOS M50  
f/4.5  
1/1600  
85mm



Neurofriendly



Biophilia



Natural Light

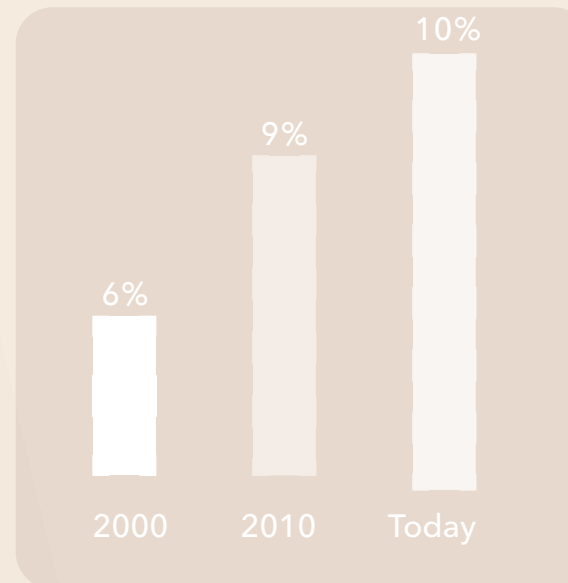


Responsible Source

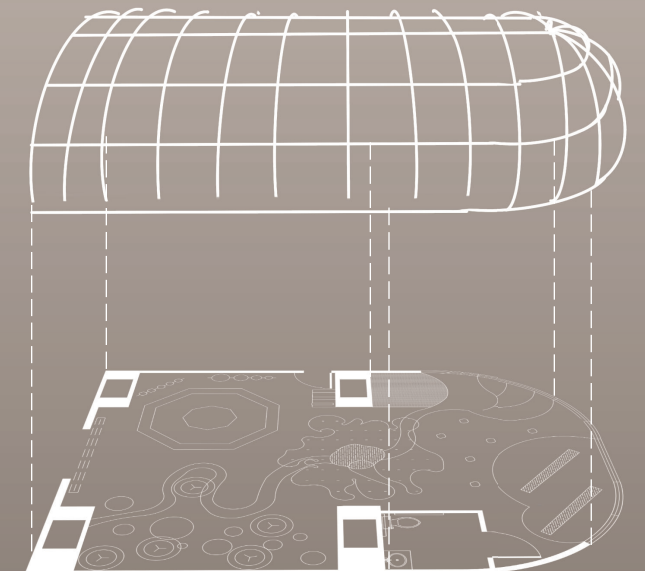
**Users:**

**Children ages 5-12 with:**

- ADHD and short attention spans
- Low self-esteem
- Heightened sensory awareness

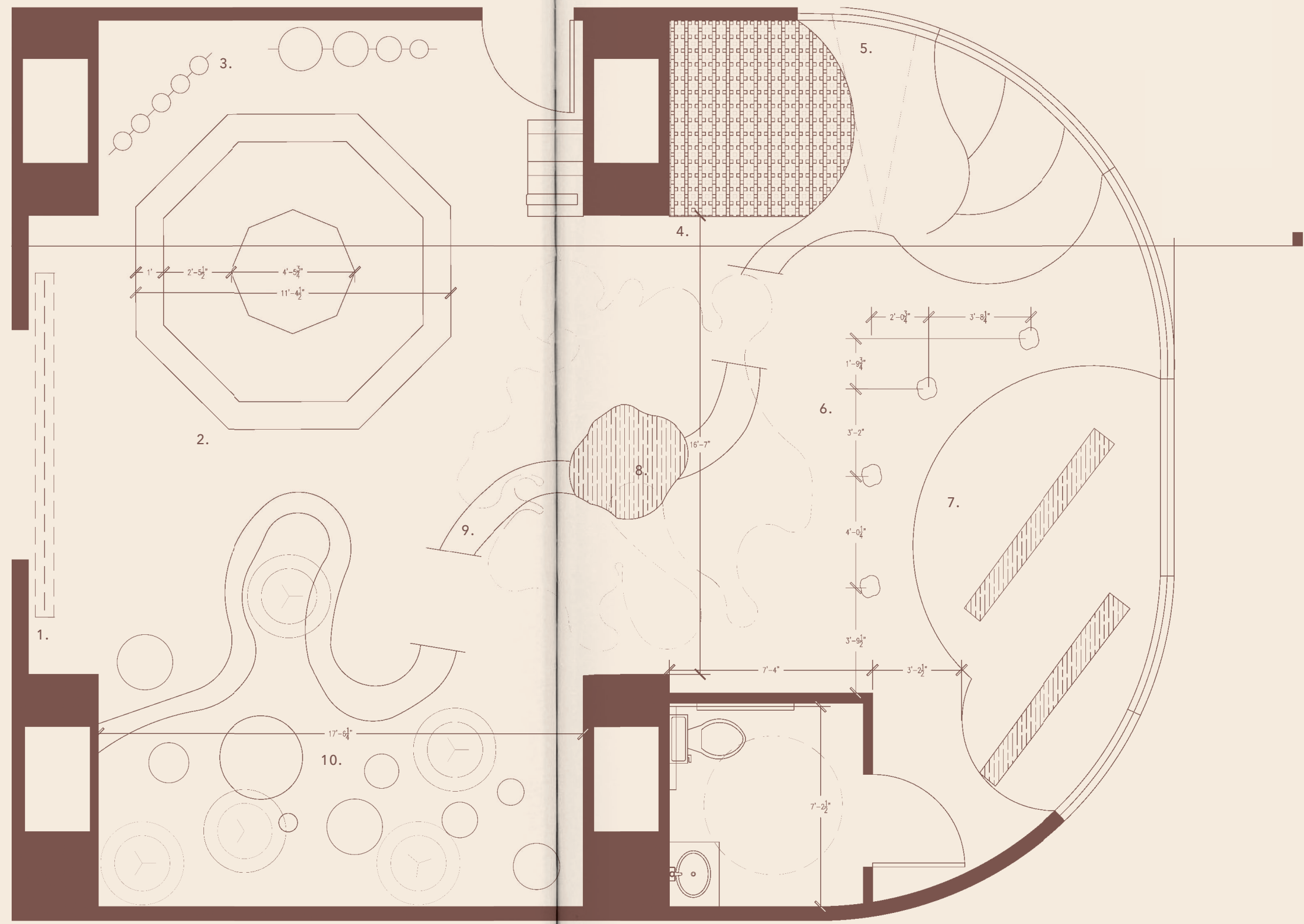


ADHD is found more commonly in children now than ever before.



**Transparent roof design:**  
Maximizes daylight exposure for the living trees and maintains optimal humidity levels for healthy growth

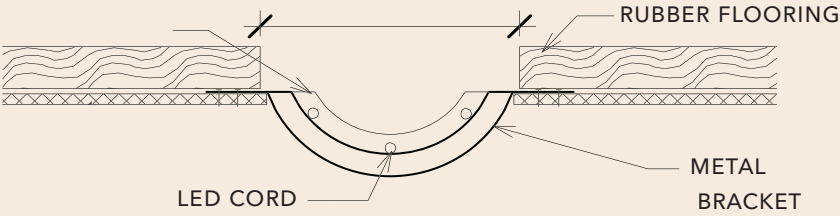
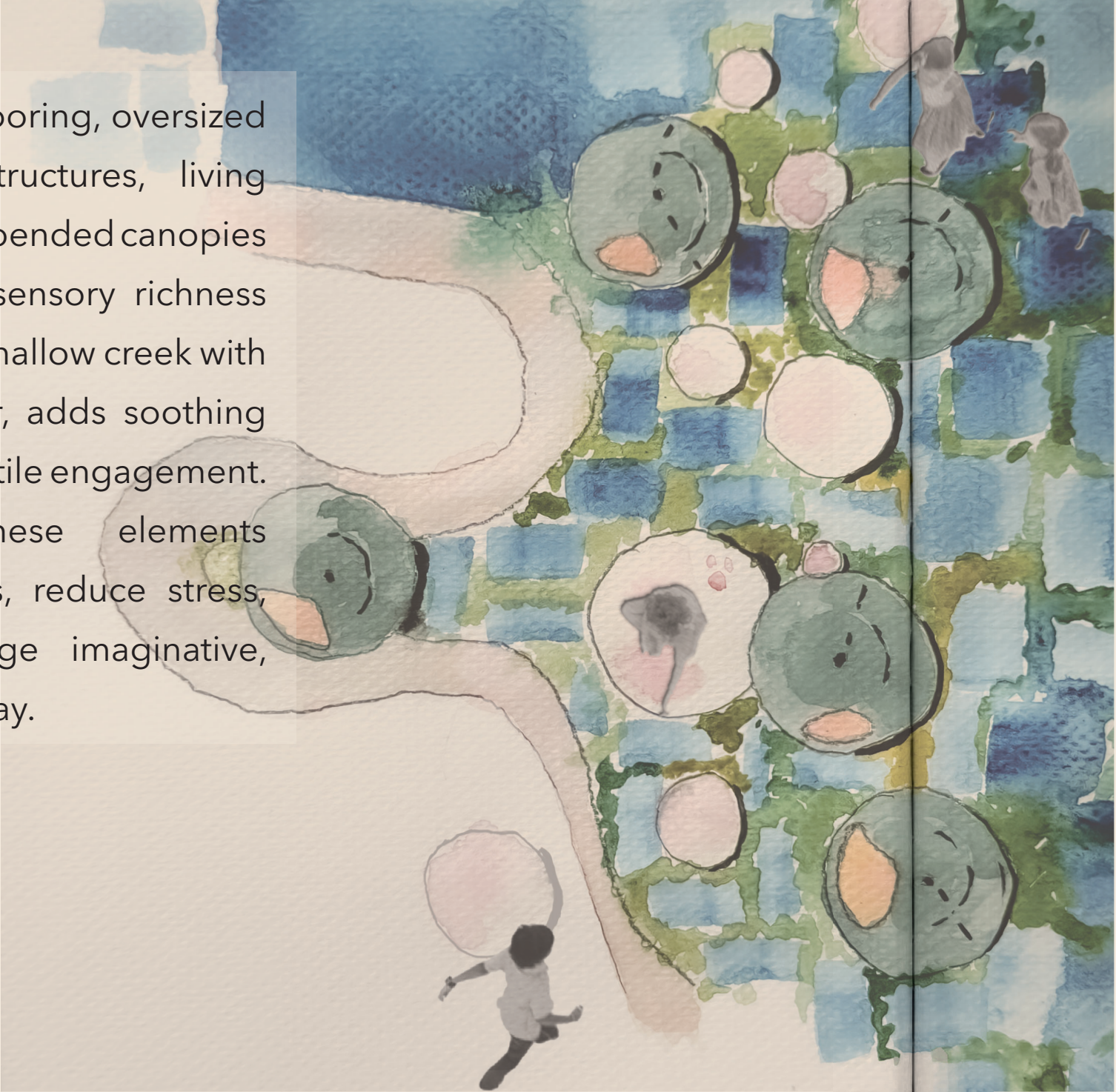




- 1. WATERFALL
- 2. FIRE PIT
- 3. MUSIC CORNER
- 4. CLIMBER NET
- 5. STONE WATER SLIDE
- 6. THE ORCHARD
- 7. SAND PIT
- 8. THE OLD OAK
- 9. CREEK
- 10. MUSHROOM GROVE



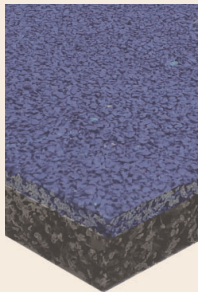
Soft rubber flooring, oversized mushroom structures, living moss, and suspended canopies recreate the sensory richness of a forest. A shallow creek with running water, adds soothing sound and tactile engagement. Together, these elements support focus, reduce stress, and encourage imaginative, screen-free play.



RE SIN



LED CORD

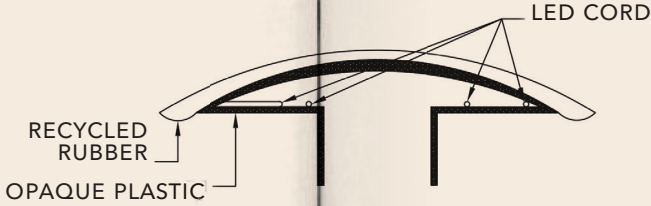
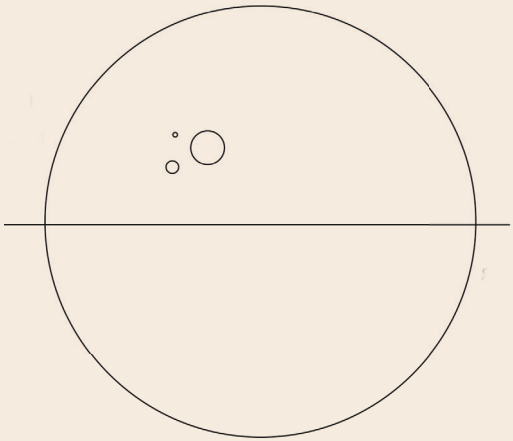
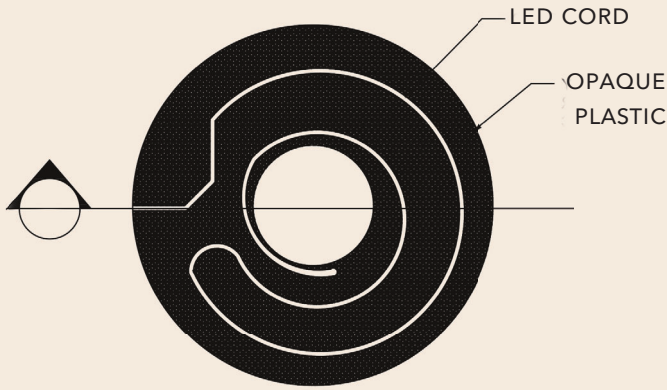
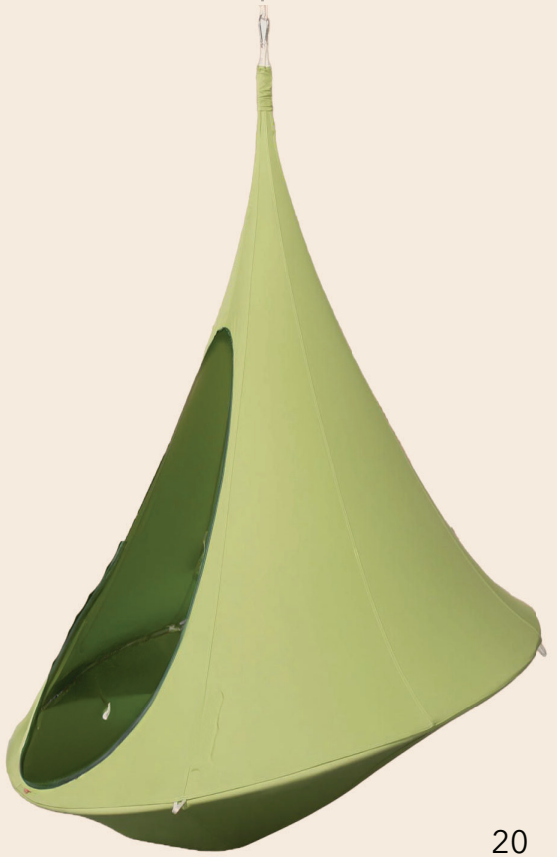


RUBBER FLOORING

I.  
THE GENTLE SOUNDS OF FLOWING WATER HIGHLY EFFECTIVE FOR CALMING AUDITORY SENSORY INPUT.

II.  
SENSORY PLAY STRENGTHENS NEURAL CONNECTIONS IN BRAIN REGIONS TIED TO MOTOR SKILLS, LANGUAGE, AND PROBLEM-SOLVING, AS RECOGNIZED BY PEDIATRIC EXPERTS.

III.  
RESEARCH SHOWS THAT REGULAR WATER PLAY HELPS CHILDREN IMPROVE FOCUS AND LOWERS STRESS HORMONE LEVELS, SUPPORTING EMOTIONAL REGULATION





THE OLD OAK  
AND  
THE ORCHARD

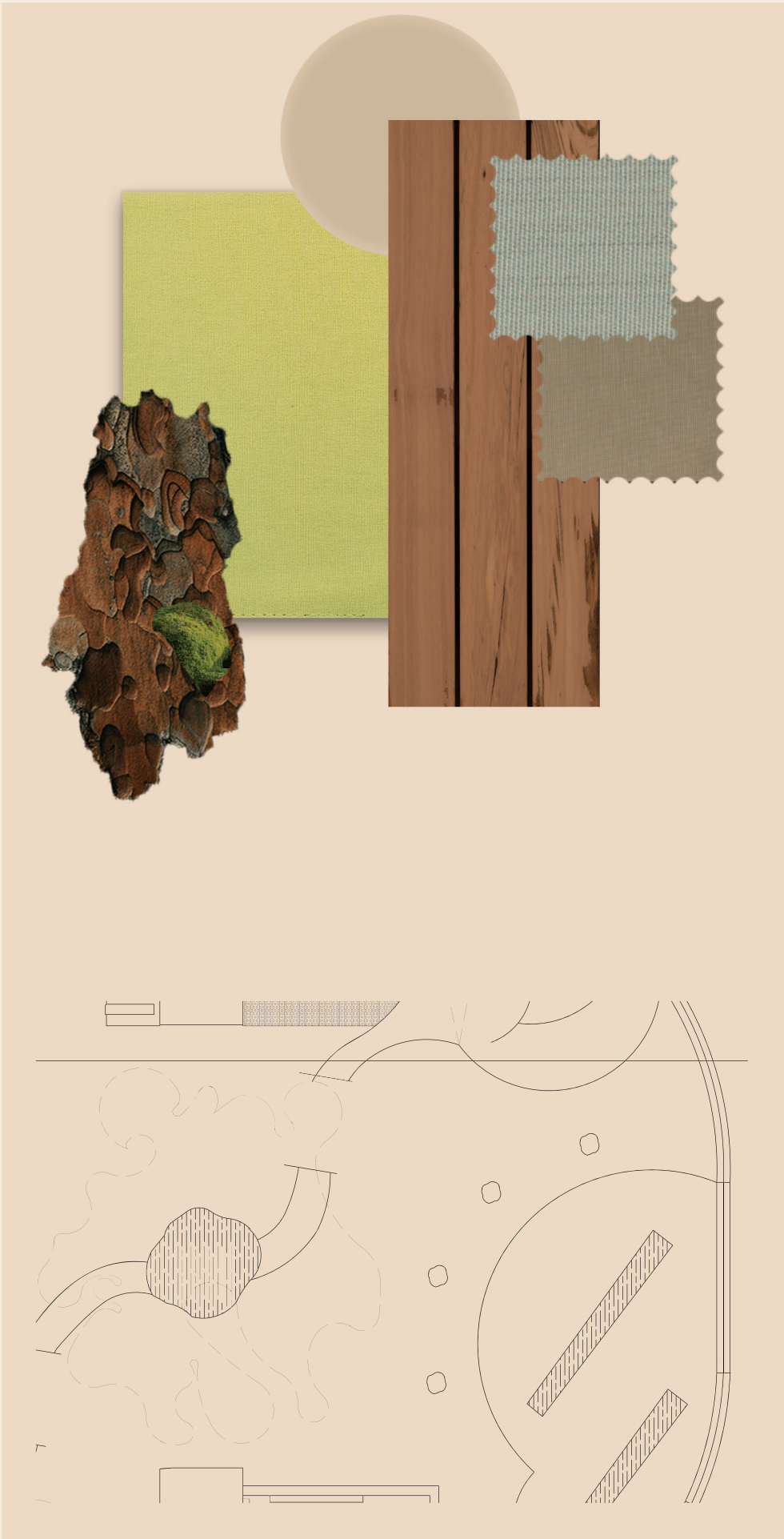
UPHOLSTRY:  
TUCCI: SEA MIST

UPHOLSTRY:  
TUCCI: SPROUT

UPHOLSTRY:  
TUCCI: ECRU

RECLAIMED  
WOOD AND  
BARK: WITHIN  
100 MILES OF  
BUILD SITE

PAINT:  
SHERWIN WILLIAMS  
GRECIAN IVORY



IN LIGHT  
OF THE  
TRANSPARENT  
ROOF, THIS  
DESIGN  
REQUIRES  
SHADE  
THROUGHOUT  
THE FLOOR  
PLAN.

TUCCI CUSTOM  
ORDERED  
UPHOLSTRY  
WOULD OFFER  
ADDITIONAL  
UV  
PROTECTION.

