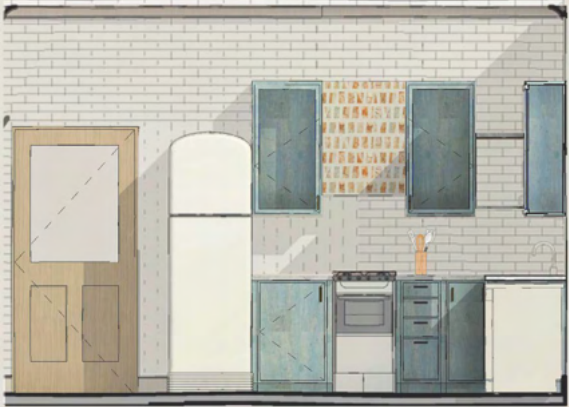


THE BEGINING

PROJECT 1: THE NEST



Inspired by nature's colorful palette, this condo design blends retro charm with organic warmth. Brick walls, nature-inspired wall coverings and vintage-style appliances create a character rich space that feels both nostalgic and refreshed.



PROJECT 2: CHURCH OFFICE BUILDING



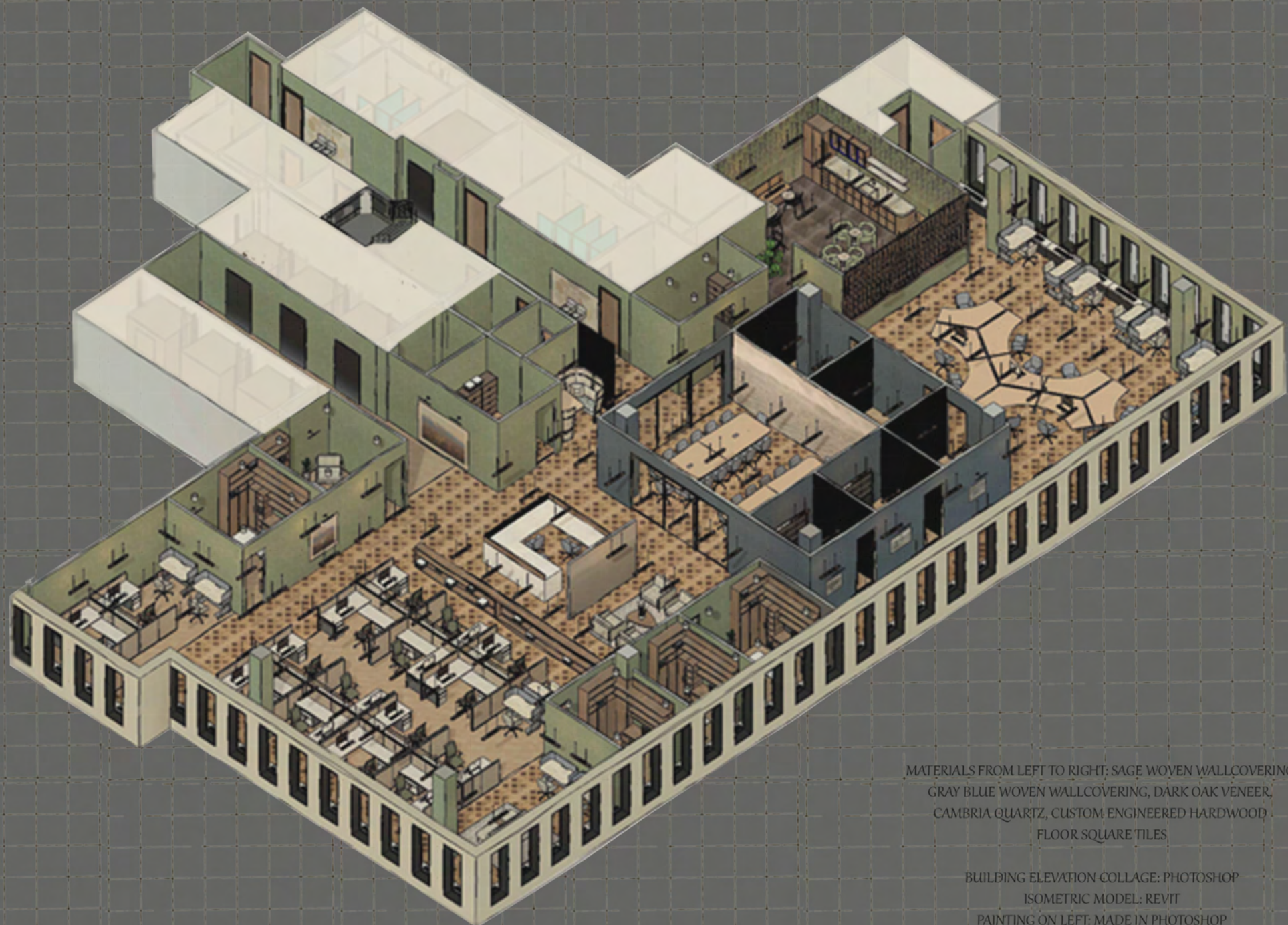
THE GRID SYSTEM

This office design draws inspiration from the structured efficiency of Salt Lake City's iconic grid system. The concept translates the city's organized layout into a workspace that promotes clarity, flow, and productivity. Furniture placement follows a grid-inspired arrangement to enhance circulation and spatial balance, while the finishes echo geometric grid patterns that reinforce cohesion and order. The result is an environment that embodies both visual harmony and functional precision, mirroring the logic and rhythm of the city that inspired the design.



HISTORIC PHOTOGRAPHS AND CURATED PAINTINGS OF DOWNTOWN, SALT LAKE CITY BRING LOCAL CHARACTER AND VISUAL WARMTH TO THE OFFICE INTERIORS

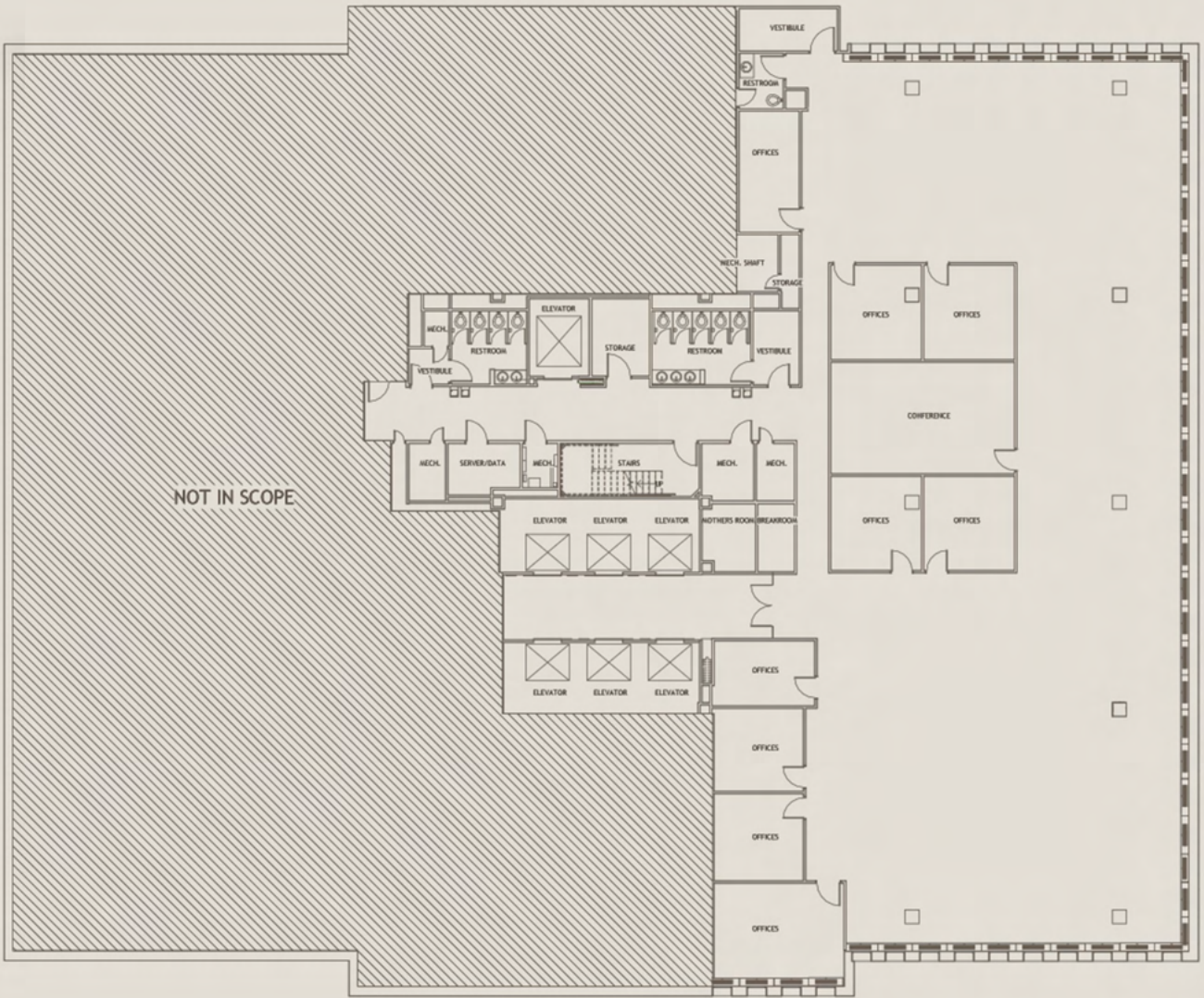
MAIN MATERIALS PALETTE
&
ISOMETRIC MODEL



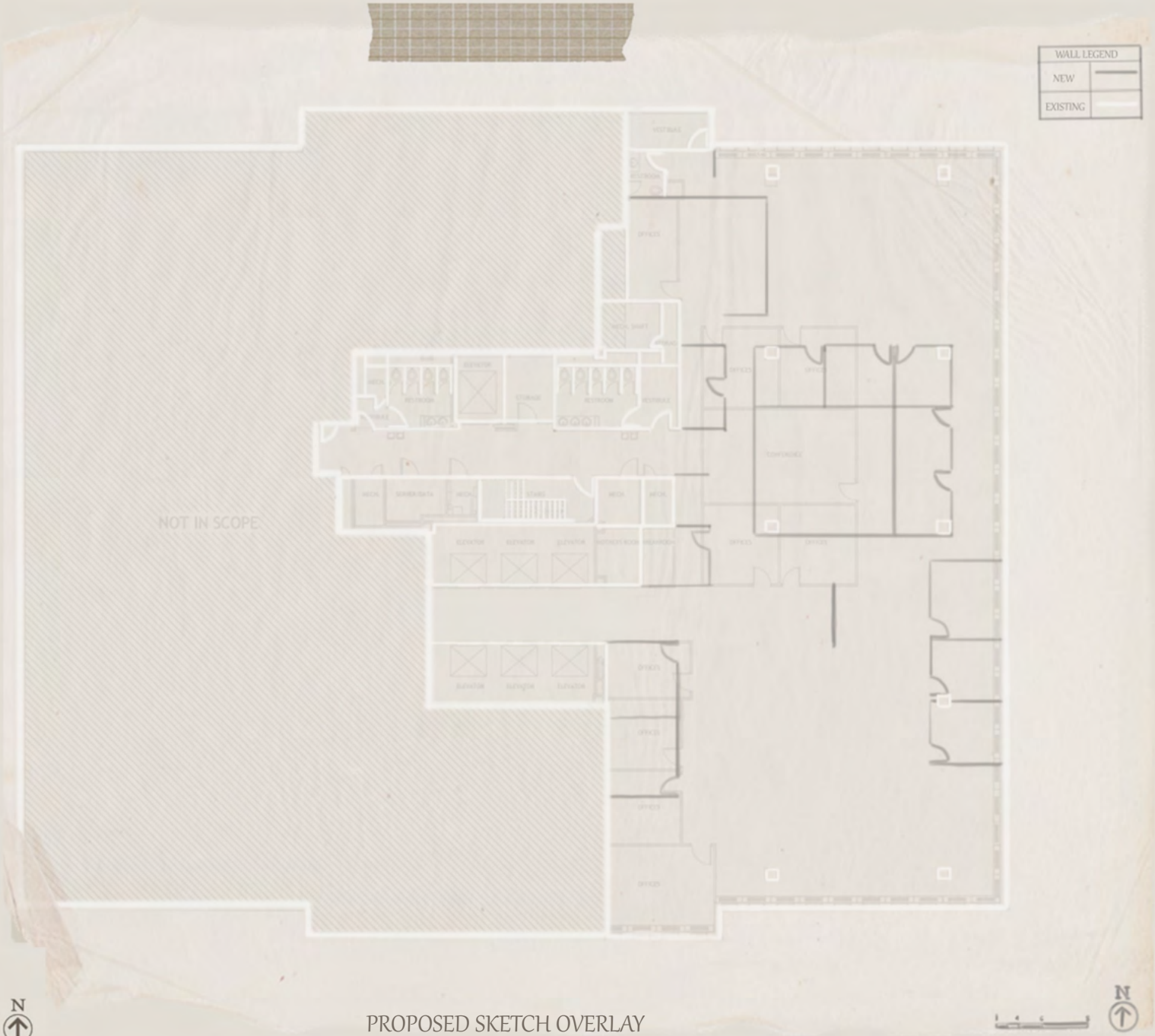
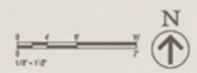
MATERIALS FROM LEFT TO RIGHT: SAGE WOVEN WALLCOVERING, GRAY BLUE WOVEN WALLCOVERING, DARK OAK VENEER, CAMBRIA QUARTZ, CUSTOM ENGINEERED HARDWOOD FLOOR SQUARE TILES

BUILDING ELEVATION COLLAGE: PHOTOSHOP
ISOMETRIC MODEL: REVIT
PAINTING ON LEFT: MADE IN PHOTOSHOP

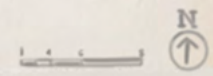
CHURCH OFFICE BUILDING-CONSTRUCTION DOCUMENTS

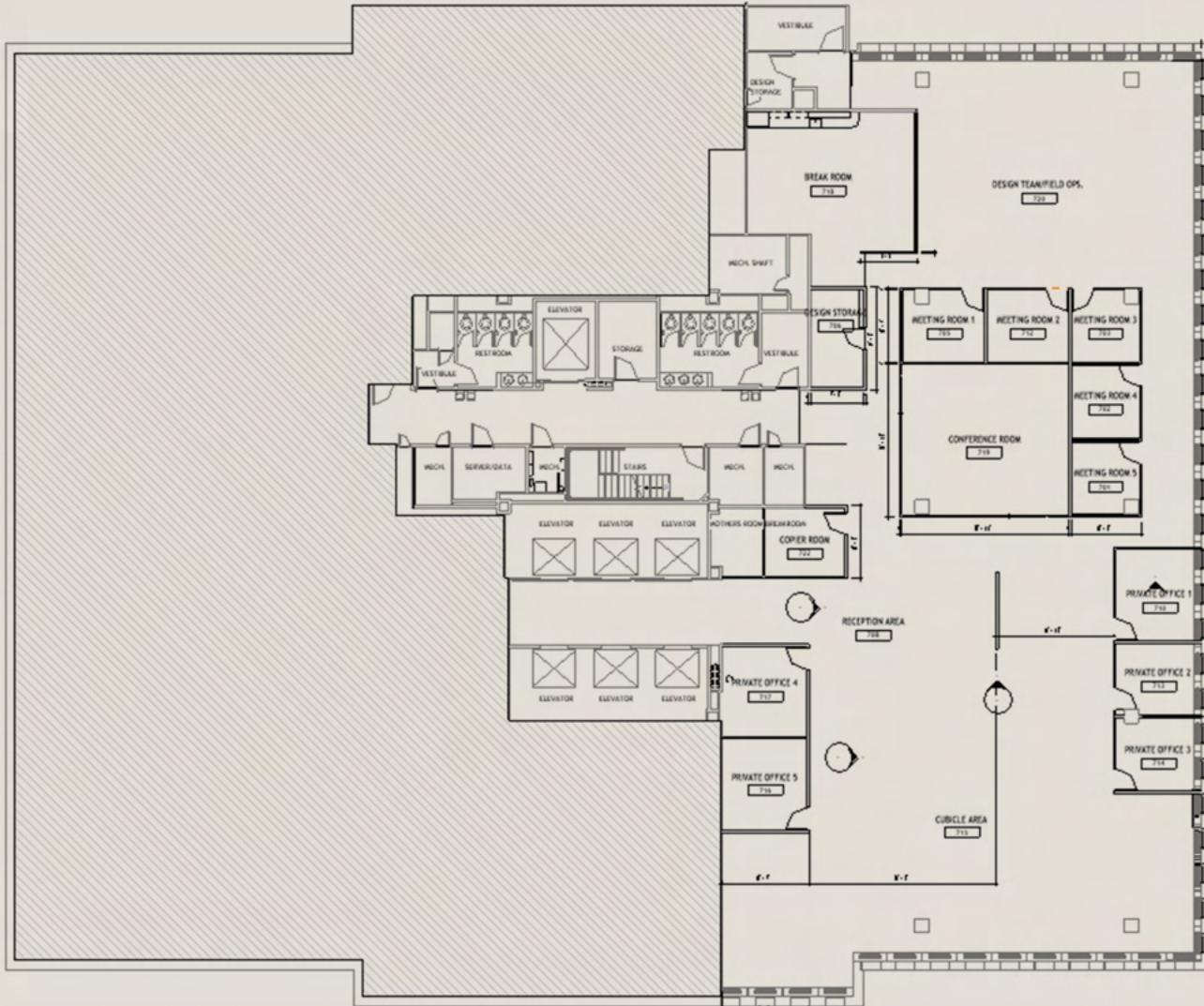


EXISTING PLAN



PROPOSED SKETCH OVERLAY



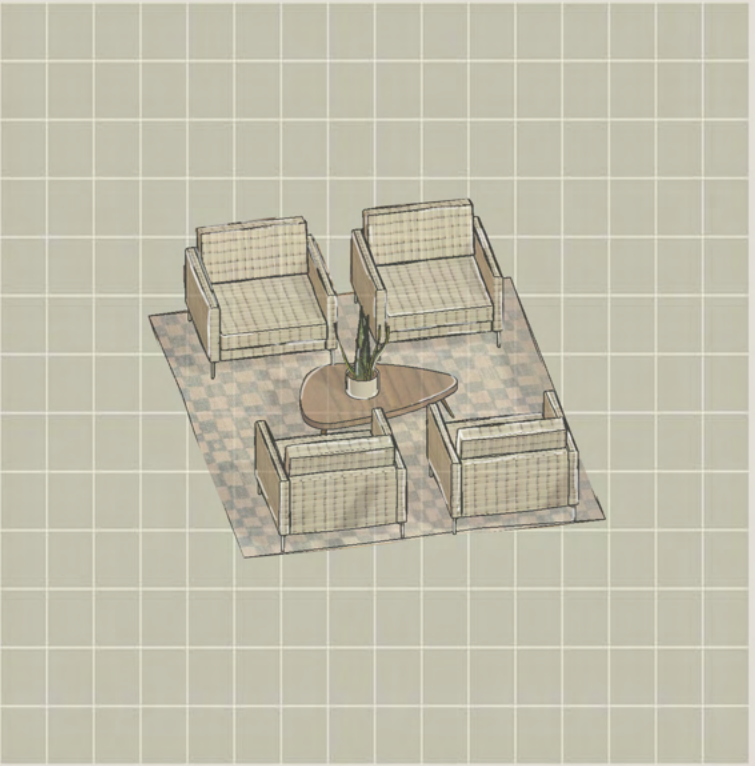
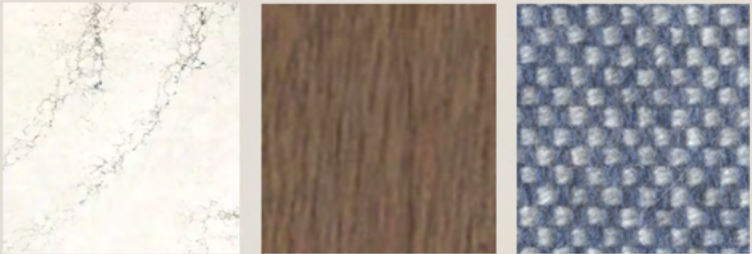
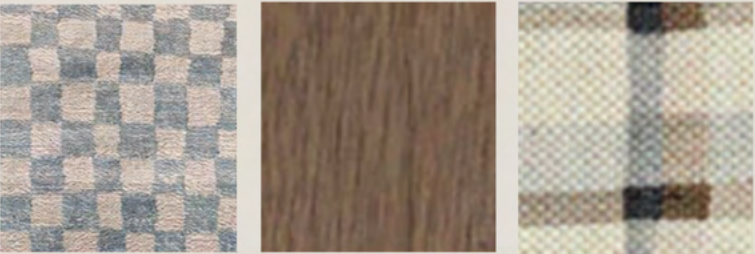
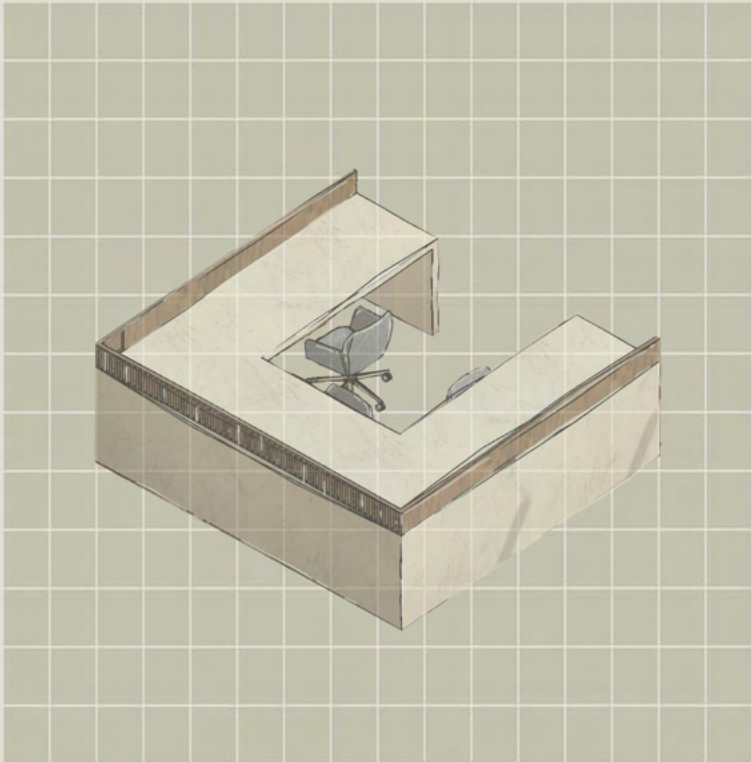
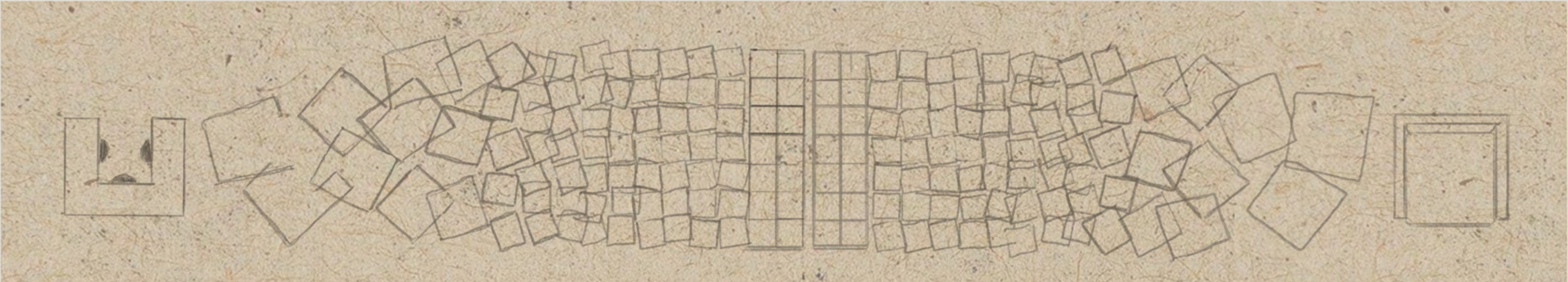


NEW PLAN



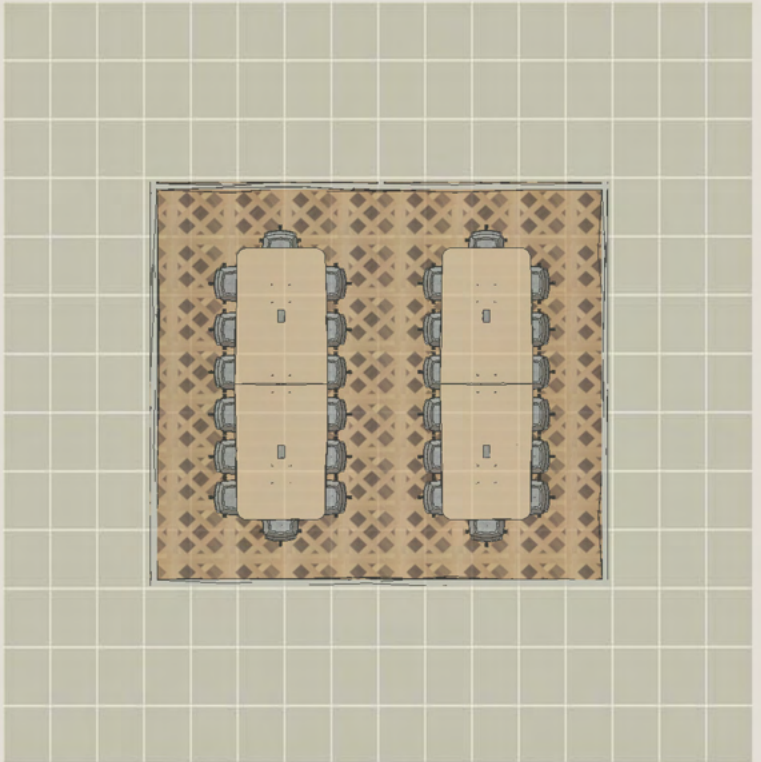
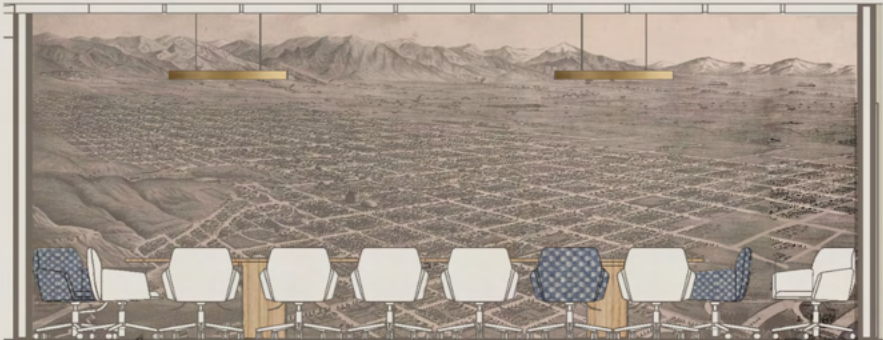
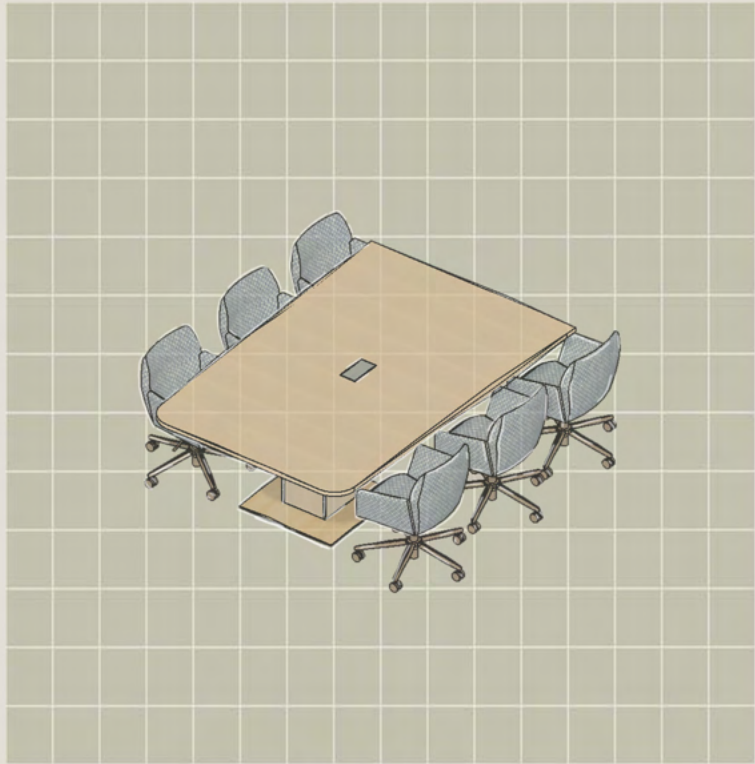
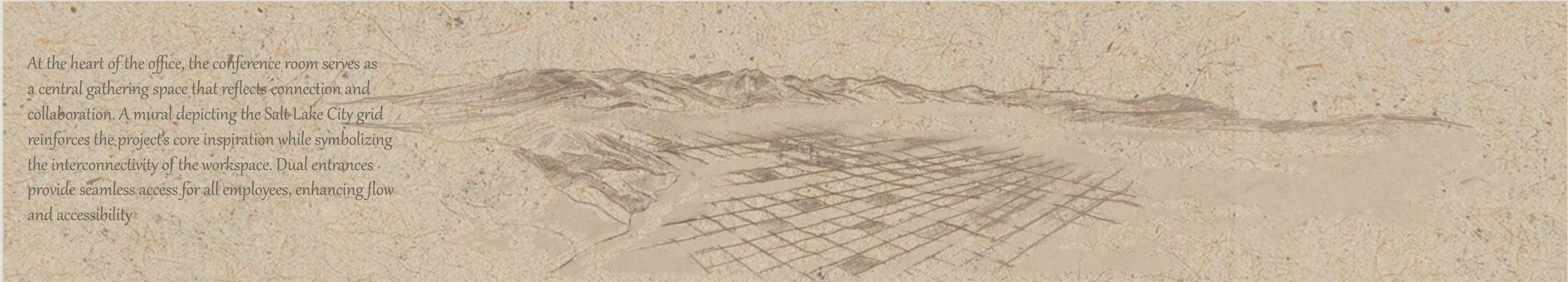
FINAL PLAN

RECEPTION AREA

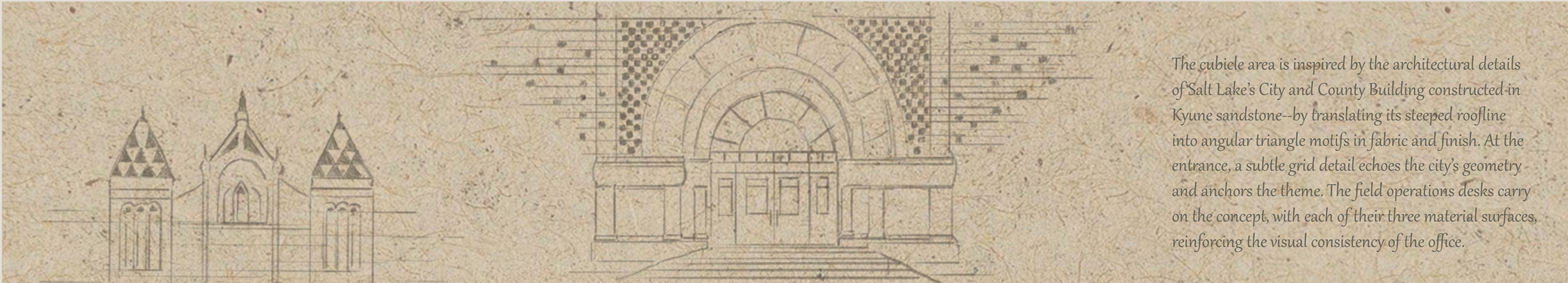


CONFERENCE ROOM

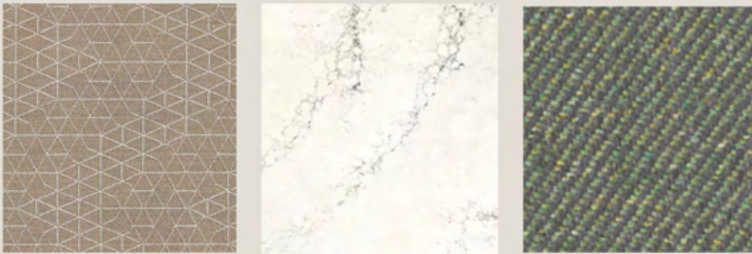
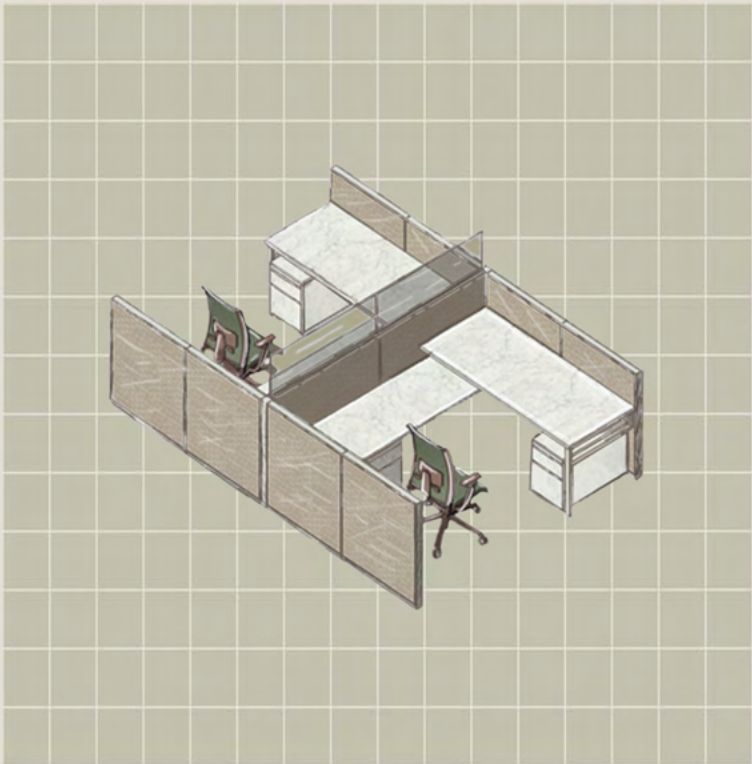
At the heart of the office, the conference room serves as a central gathering space that reflects connection and collaboration. A mural depicting the Salt Lake City grid reinforces the project's core inspiration while symbolizing the interconnectivity of the workspace. Dual entrances provide seamless access for all employees, enhancing flow and accessibility



CITY & COUNTY CUBICLE AREA



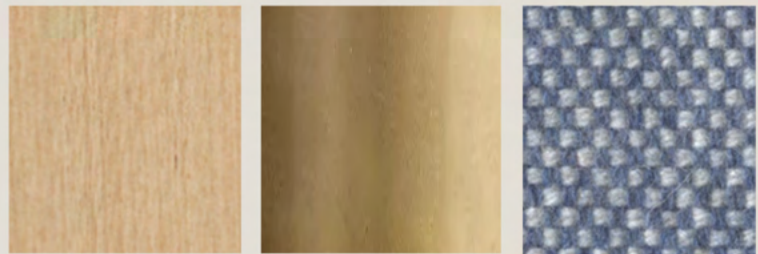
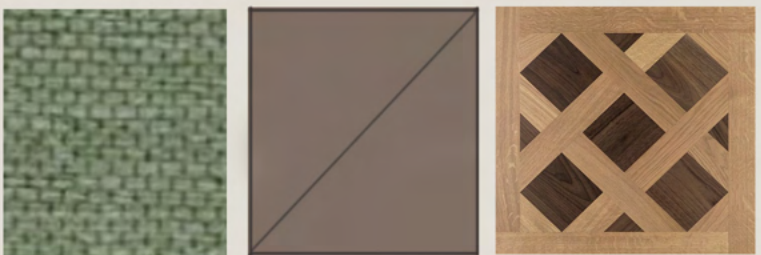
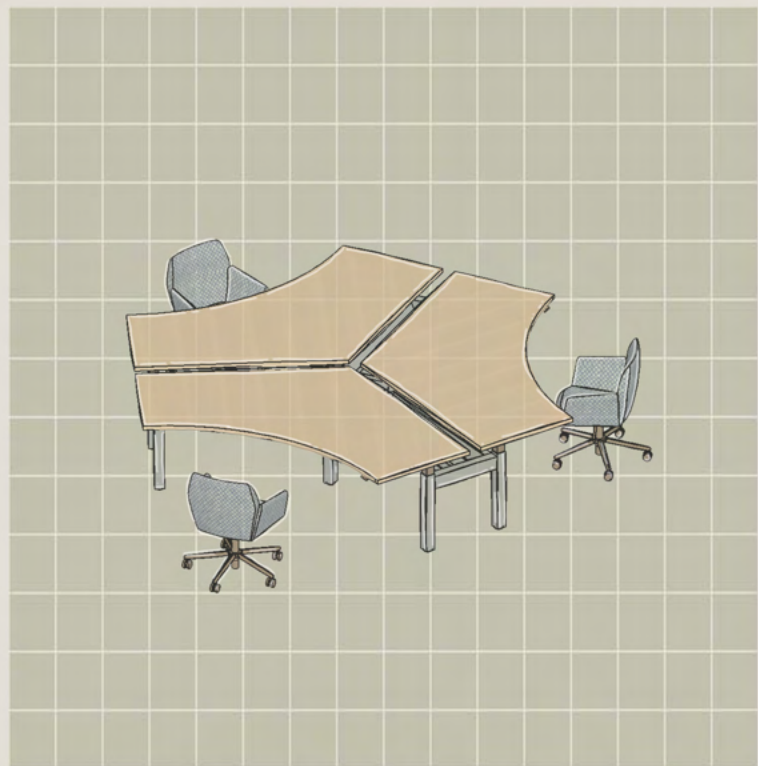
The cubicle area is inspired by the architectural details of Salt Lake's City and County Building constructed in Kyune sandstone--by translating its steeped roofline into angular triangle motifs in fabric and finish. At the entrance, a subtle grid detail echoes the city's geometry and anchors the theme. The field operations desks carry on the concept, with each of their three material surfaces, reinforcing the visual consistency of the office.



THE HIVE-DESIGN TEAM

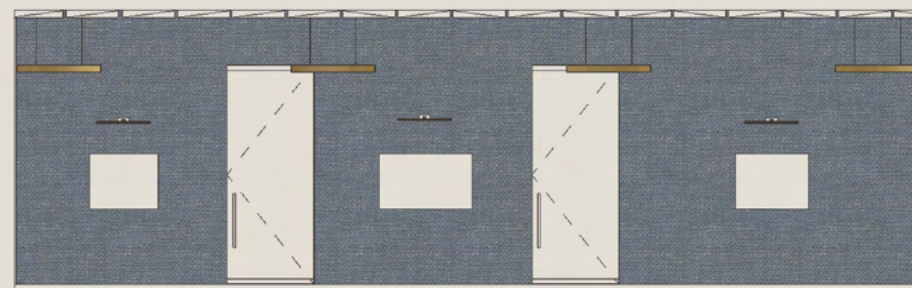
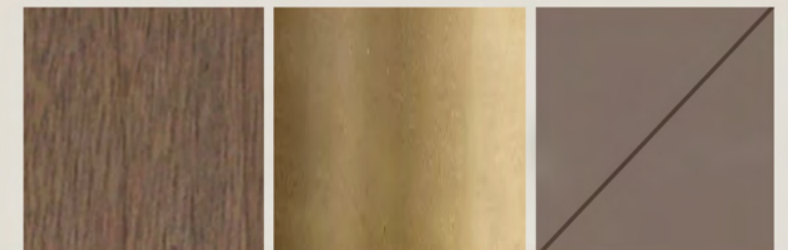


Known as The Hive, this collaborative workspace draws inspiration from Salt Lake's beehive symbol, representing industry and unity. The honeycomb shaped desks encourage creativity and teamwork, complemented by nearby meeting rooms that support focused group collaboration.



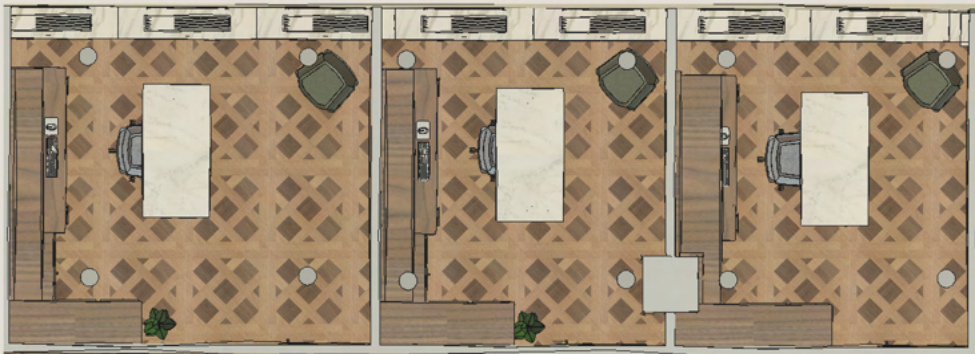
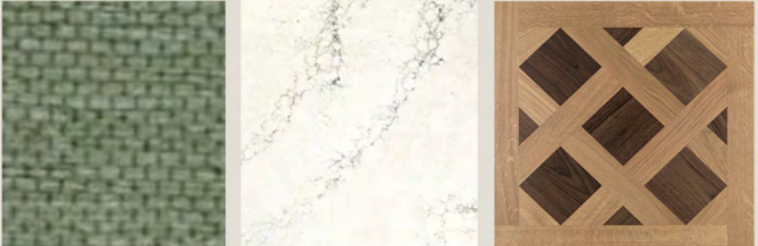
THE CROSSROADS-SMALL MEETING ROOMS

The Crossroads are spaces of connection where movement and collaboration intersect. Light oak grid paneling, woven textures, and soft orange tones reflect the warmth of exchange and the geometry that unifies the office as a whole.



THE AVENUES-PRIVATE OFFICES

Named The Avenues after one of the city's most distinctive neighborhoods, these private offices evoke the comfort and refinement of a residential setting. Warm wood cabinetry, a quartz desk, and subtle gold accents create a sense of timeless sophistication within a quiet focused environment.



THE PARK-BREAKROOM



The Park offers a place of rest and rejuvenation within the workspaces. Leaf-patterned wall tiles, pebble-like counter-tops, and organically shaped furniture evoke the feeling of sitting beneath a tree in a park, creating a natural and calming retreat for employees.





PROJECT 3: The Glass House

GLASS HOUSE

MAIN MATERIALS PALETTE
&
ISOMETRIC MODEL

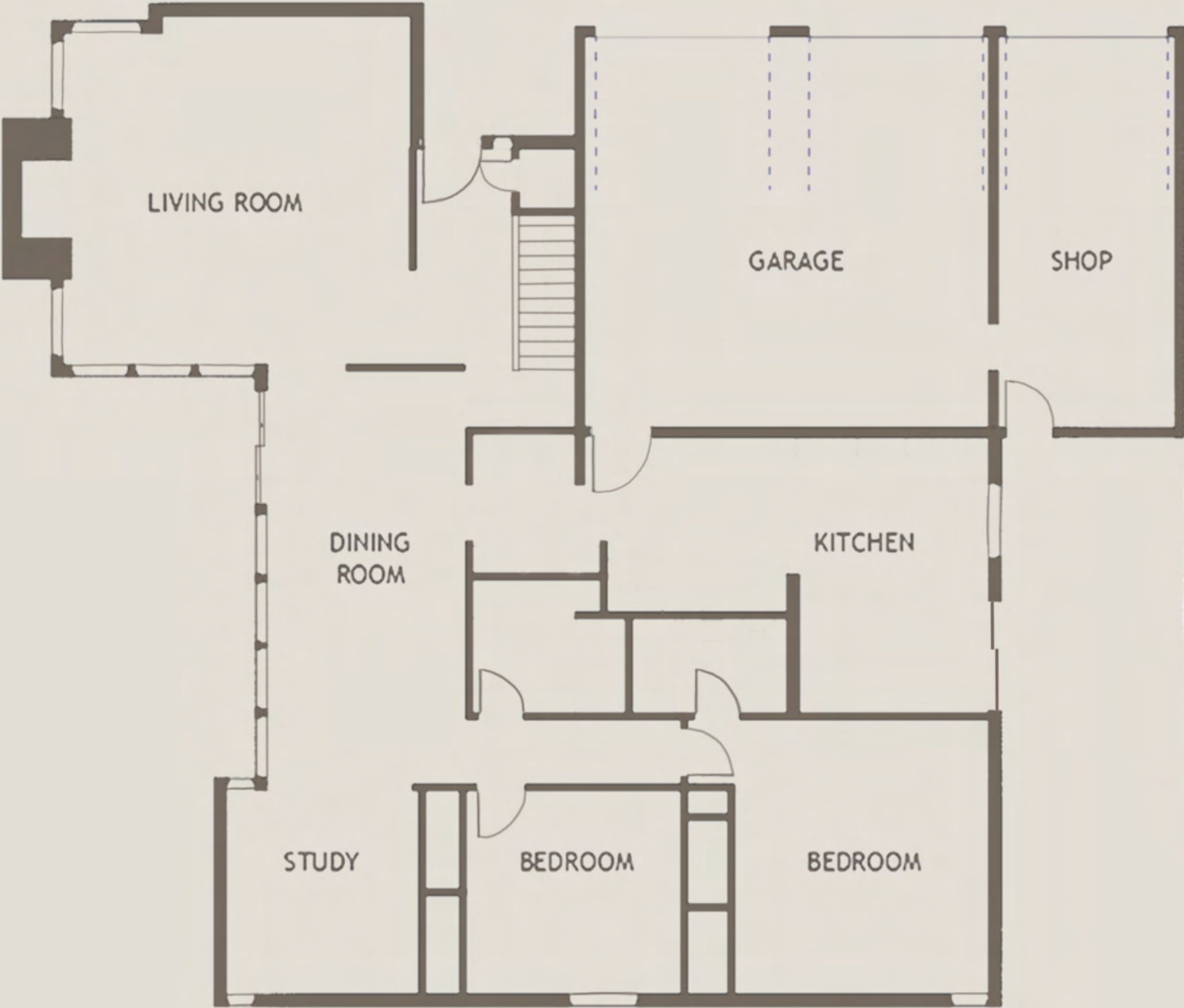
The Glass House is a light filled mid-century modern residence defined by openness, warmth, and material clarity. Expansive glass walls invite natural light into the living areas of the home, while light burlwood cladding and cabinetry add richness and texture. Iconic Barcelona chairs and curated mid century furnishings complete a home that feels timeless, airy and refined.



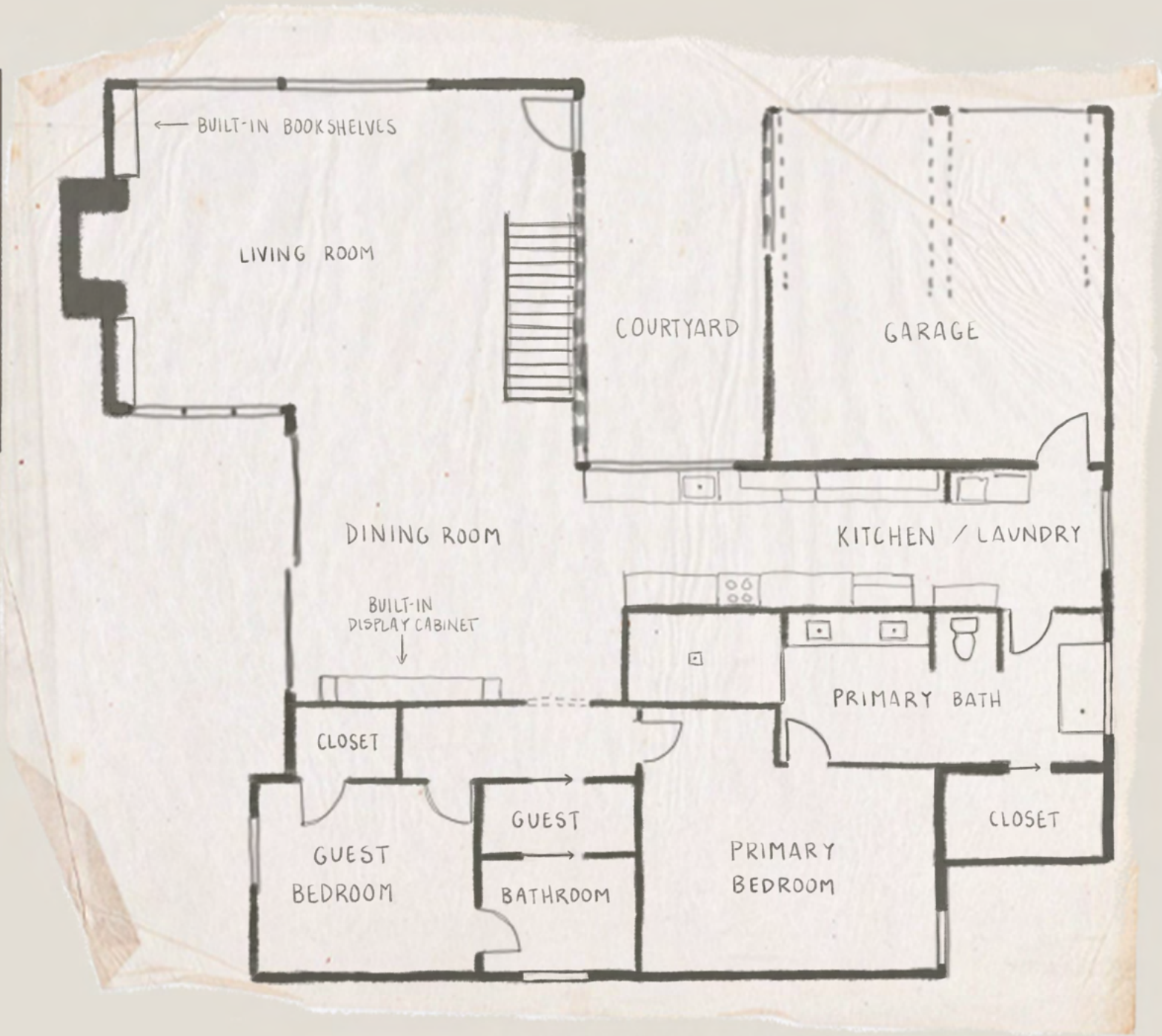
MATERIAL CIRCLE SWITCHES FROM LEFT TO RIGHT:
GRAY LINEAR BRICK- EXTERIOR FACADE, LIGHT BURWOOD VENEER- WALL AND CABINETY,
TEXTURED WALL COVERING- CHARCOAL GREY, MARBLE SLAB- SHOWER WALLS,
PORCELAIN STONE LOOK TILE- BATHROOM WALLS



COLLAGE: PHOTOSHOP
ISOMETRIC MODEL : REVIT & PHOTOSHOP



EXISTING PLAN



PROPOSED SKETCH OVERLAY

GLASS HOUSE-RENDERED FLOORPLAN AND LEGEND



The story piece for this project is a mid-century modern-inspired rug featuring strong geometric patterning and a balance of rhythm, repetition, and variety. It's broad color range--dark warm neutrals supported by complimentary blue and orange tones provides a flexible and cohesive foundation for the material selections accross the home. The rug's texture adds dimension to the space, while its visual harmony reinforces the timeless, structured aesthetic of mid-century modern design.



1

COURTYARD

2

FOYER

3

LIVING ROOM

4

DECK

5

DINING ROOM

6

GALLEY KITCHEN

7

GARAGE

8

LAUNDRY ROOM

9

GUEST BEDROOM CLOSET

10

GUEST BEDROOM

11

GUEST BATHROOM

12

PRIMARY BEDROOM

13

PRIMARY BATHROOM

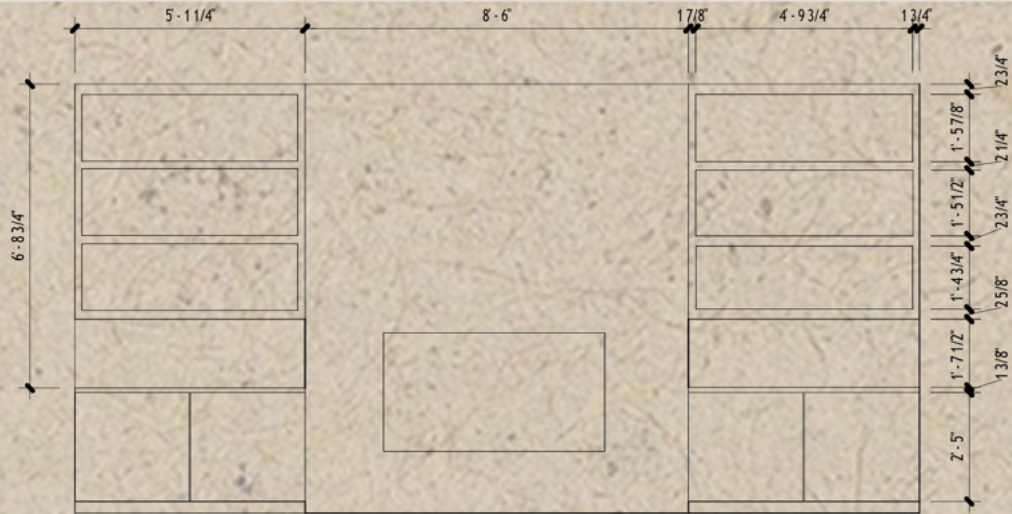
14

PRIMARY CLOSET



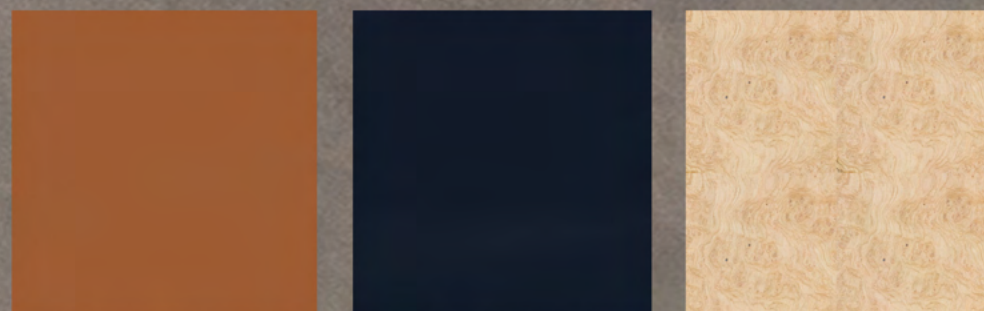
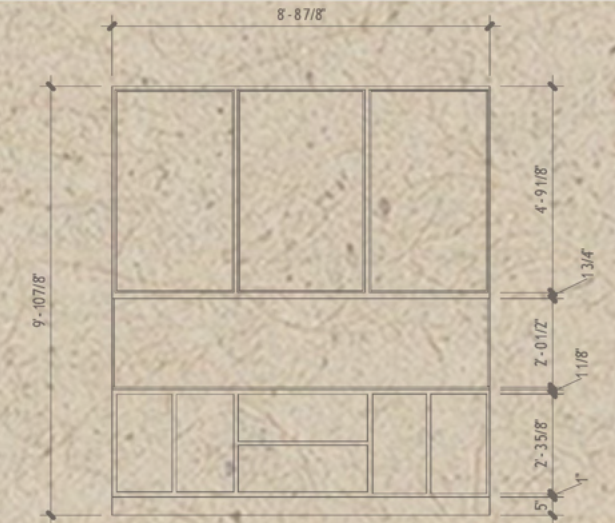
LIVING ROOM

The living room features a gray brick fireplace flanked by custom burlwood built-ins and a glass brick wall, referencing Mies van der Rohe and inspiring the home's name, "The Glass House." Dark lime-wash textured wallpaper walls contrast with cool concrete floors, while pale blue sofas and a soft pink marble coffee table balance warm and cool tones. Inspired by Alvar Aalto's humanist-modernist approach, the wood elements bring texture and warmth, complemented by black leather Barcelona chairs and continuous oak ceiling paneling that reinforce the homes character.



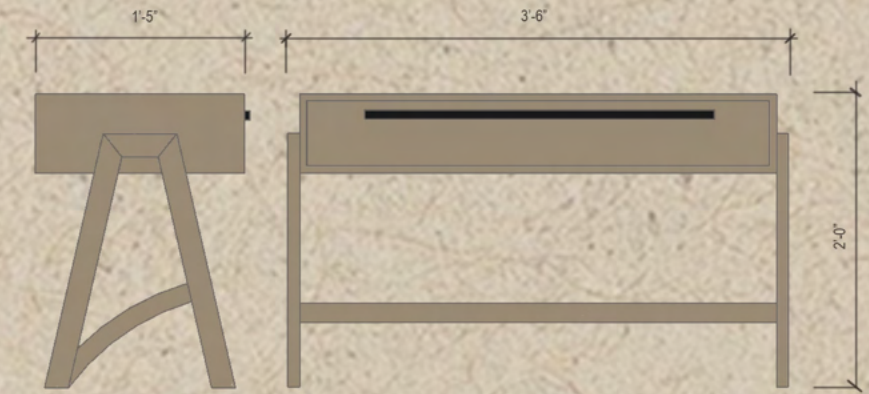
DINING ROOM

The dining room carries the home's warm material palette, anchored by a burlwood table, matching chairs, and a built-in display cabinet. Floor-to-ceiling glass doors open the space to natural light, while a rug echoing the living room's pattern adds subtle variation and visual interest.



PRIMARY BEDROOM

Wrapped in natural oak, the primary bedroom becomes a quiet retreat grounded in warmth and material continuity. The custom geometric headboard and soft gray furnishings bring subtle rhythm and contrast, enhanced by modern black accents and an coordinating lighting scheme.





Thank you



Contact Info:
email: abadmarialena@gmail.com