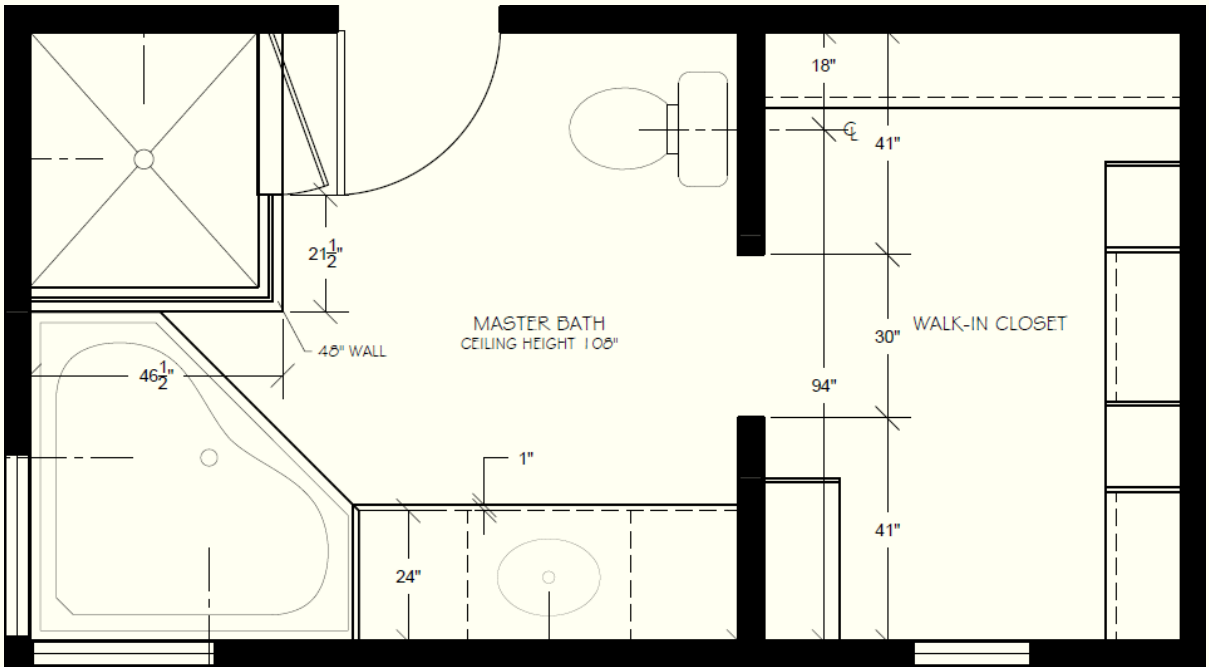


NKBA BATHROOM REMODEL

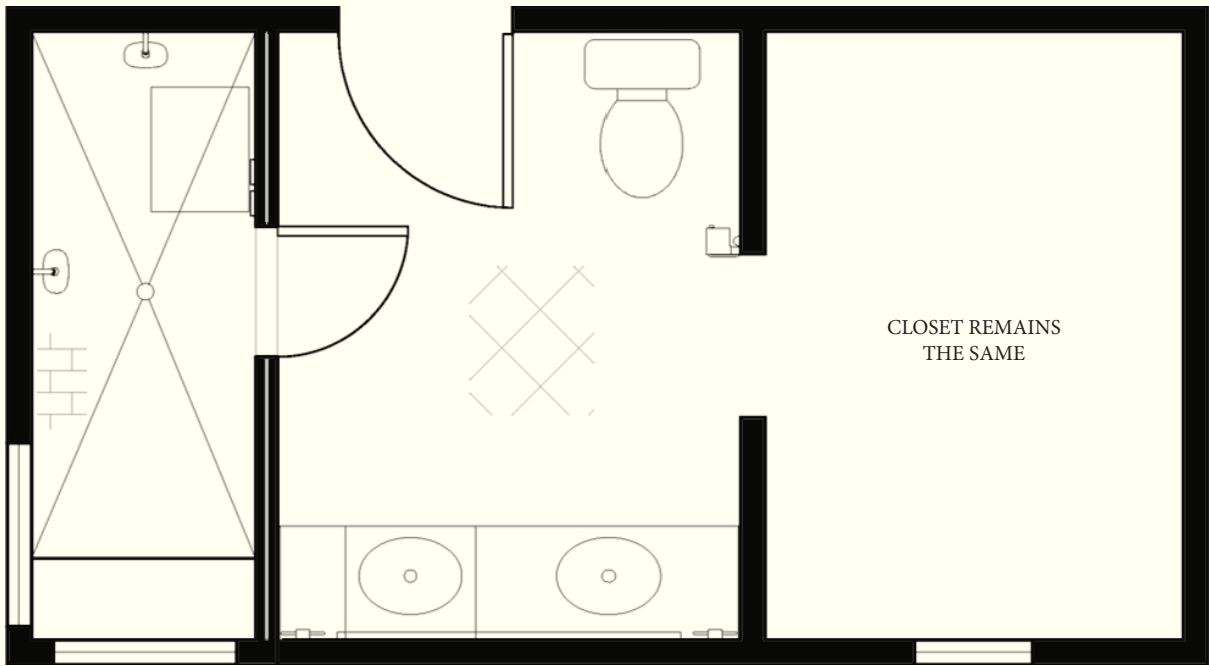
The client requested a remodel of their master bathroom to better fit their needs for every-day life. The space requirements involve removing the bathtub, adding a bigger two person steam shower, two sinks, more privacy for the toilet, a comfort height toilet, touch faucet, TV mirror, LED vanity light, outlet drawer, more storage in the vanity, leave the closet as-is, and should follow NKBA guidelines.



BEFORE PLAN

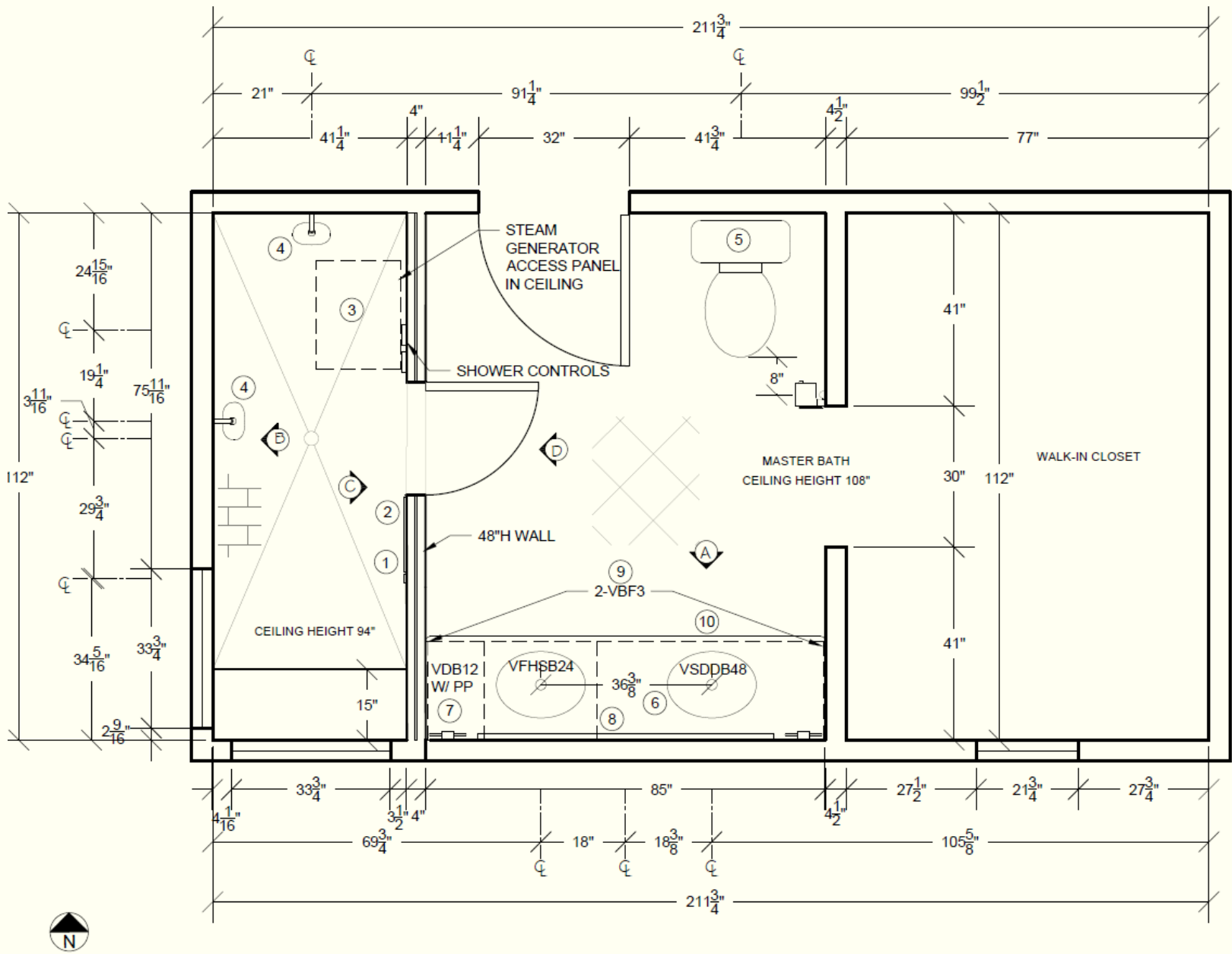


NEW PLAN

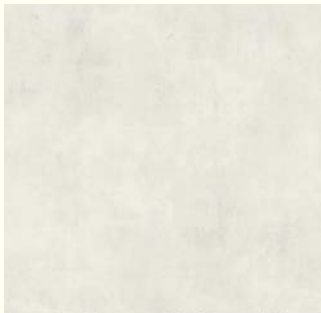


Drawn in AutoCAD

NKBA BATHROOM REMODEL

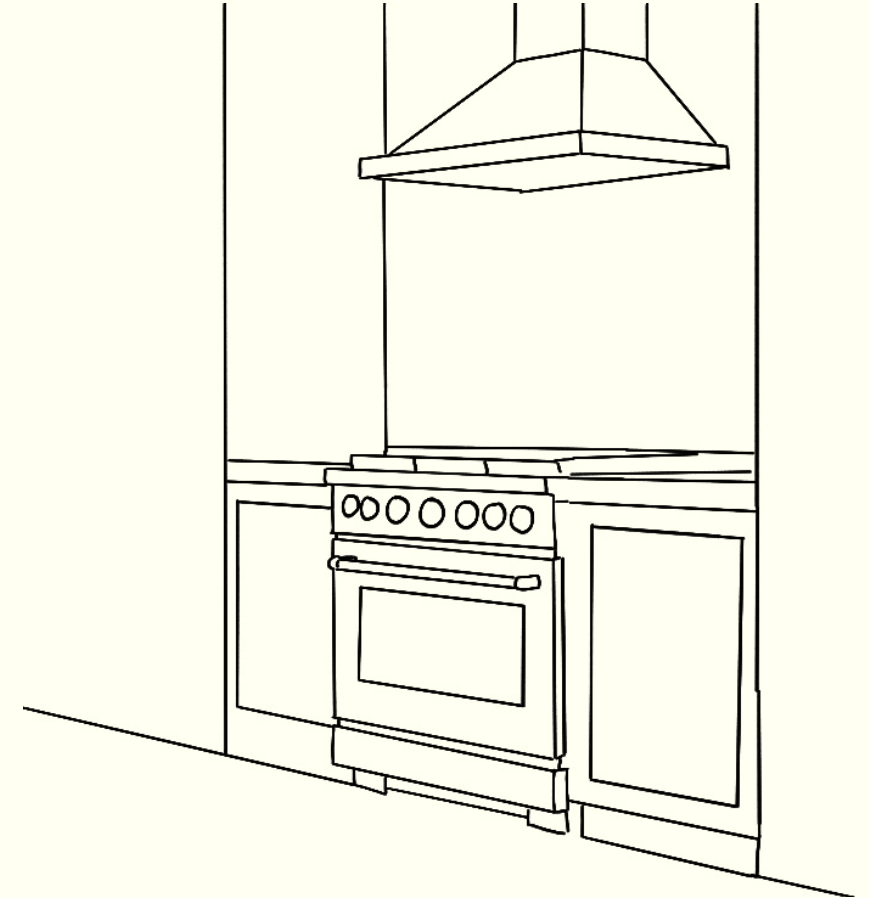
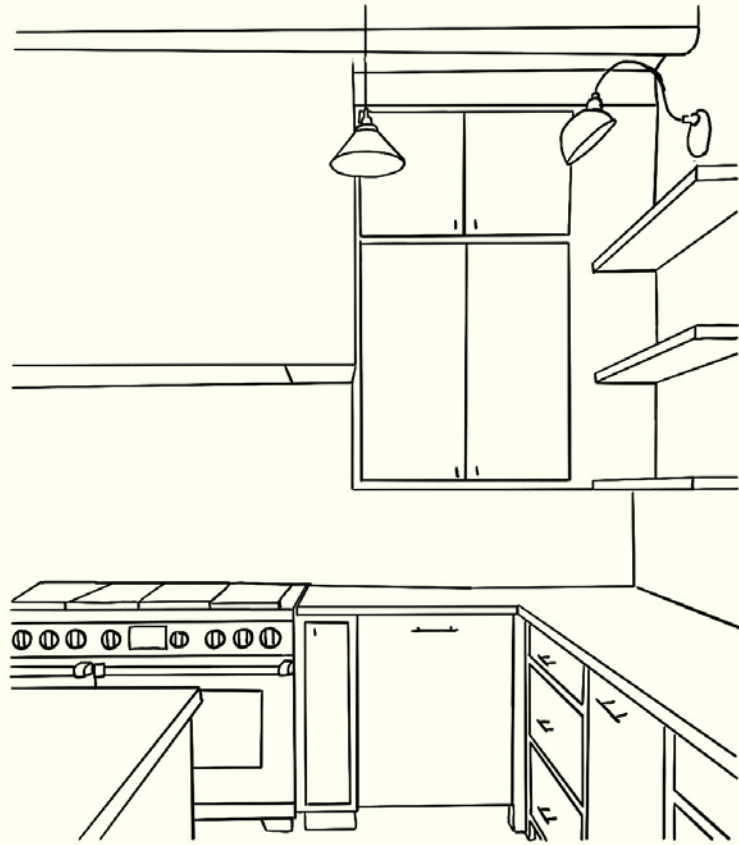


- FLOOR PLAN SPECIFICATIONS
- | | |
|---|--|
| ① STEAM VECTION, +24" AFF
THERMASOL, SV-ORB
STEAM VECTION STEAM
HEAD
DIMENSIONS: 1-3/4"
DIAMETER
OIL RUBBED BRONZE | ⑥ SINKS
KOHLER, K-2336-0
DEVONSHIRE
DIMENSIONS: 20-1/2" OVAL
WHITE
QTY: 2 |
| ② STEAM CONTROL, +37" AFF
THERMASOL, TT15V2-ORB
THERMATOUCH CONTROL
DIMENSIONS: 15.85"W X
3.37"D X 10"H
BLACK, OIL RUBBED BRONZE | FAUCETS
KOHLER, K-33624-9
TOUCHLESS BATHROOM
SINK FAUCET
DIMENSIONS: 5-3/4"W X
5-1/2"D X 8-3/16"H
VIBRANT BRUSHED NICKEL
QTY: 2 |
| ③ GENERATOR
THERMASOL, PROIII-395
PROIII SERIES STEAM
GENERATOR
DIMENSIONS: 23"W X 18"D
X 14"H
STAINLESS STEEL | ⑦ CUSTOM CHARGING
DRAWER IN THE VDB12 WITH
POWER PLUG
DIMENSIONS: 12"W X 21"D
X 10"H
FINISH |
| ④ SHOWER HEAD & CONTROL
KOHLER, K-26290-G
THREE-FUNCTION
SHOWERHEAD
DIMENSIONS: 7-15/16"W X
3-3/4"D X 5-9/16"H
VIBRANT BRUSHED NICKEL
QTY: 2 | ⑧ TV MIRROR
ARTFORMA, CUSTOM
LED LIGHTED MIRROR WITH
SMART APPLE SCREEN LOI
DIMENSIONS: 63"W X
1-2/5"D X 39-2/5"H
WHITE |
| ⑤ TOILET
KOHLER, K-77795-OB
EIR
DIMENSIONS: 16-1/2"W X
27-1/2"D X 20-9/16"H
VIBRANT BRUSHED NICKEL | ⑨ 2-VBF3 CUT TO APPROX.
1/2"W |
| | ⑩ 2 PCS. TK-8
PLYWOOD TOE-KICK |
- GENERAL NOTES
- ① SHOWER WALLS REINFORCED TO ALLOW FOR INSTALLATION OF GRAB BARS TO SUPPORT STATIC LOAD OF 250 LBS
 - ② SHOWER ENCLOSURE GLASS IS TEMPERED
 - ③ TILE ON SHOWER WALLS ALSO ON SHOWER CEILING
 - ④ SHOWER CONTROL VALVE TO HAVE HIGH LIMIT STOP TO PREVENT WATER TEMPERATURES ABOVE 120 DEGREES F
 - ⑤ SHOWER CONTROLS PRESSURE BALANCED
 - ⑥ SHOWER GLASS TO EXTEND TO CEILING AND BE FULLY SEALED
 - ⑦ SLIP RESISTANT FLOORING FOR GENERAL BATHROOM AND SHOWER
 - ⑧ MANUFACTURER'S INSTRUCTIONS LEFT WITH HOMEOWNER
 - ⑨ BATHROOM MAINTAINS 68 DEGREE F TEMPERATURE



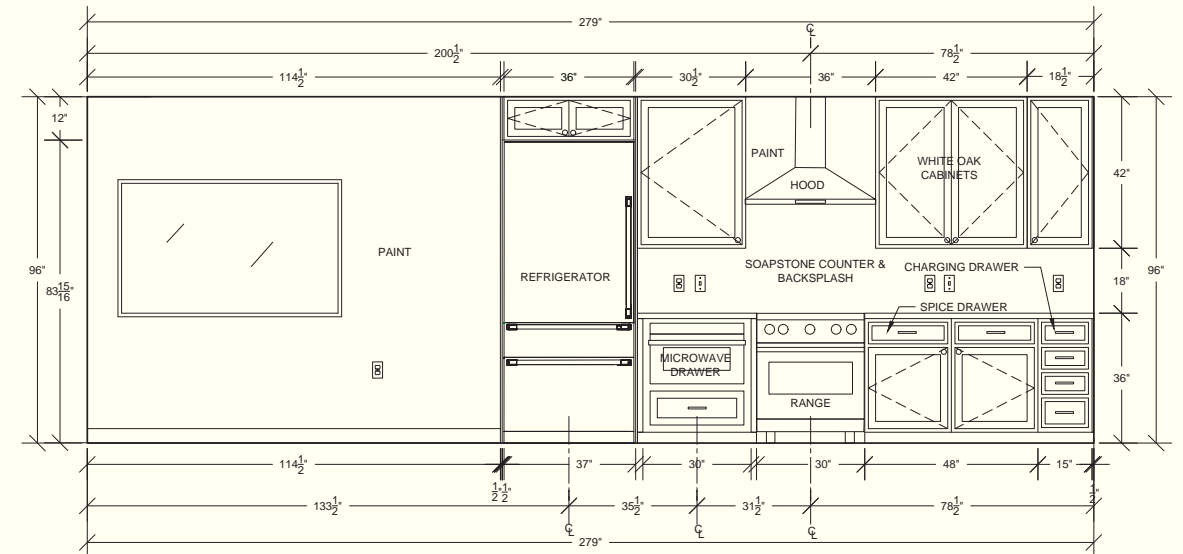
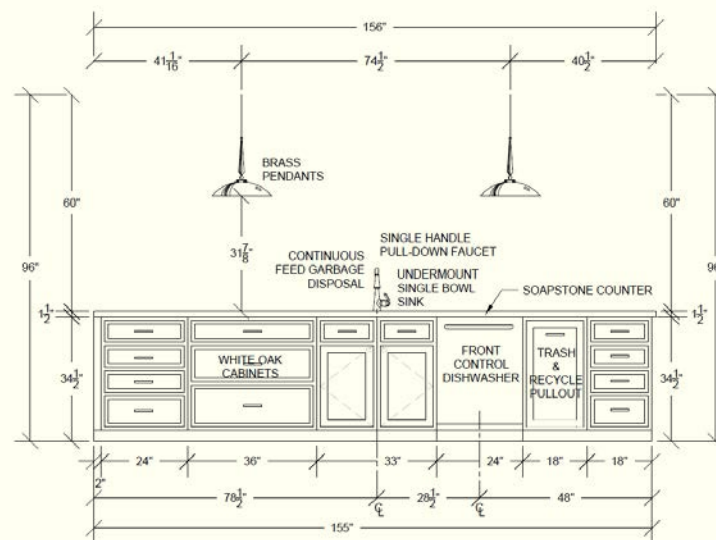
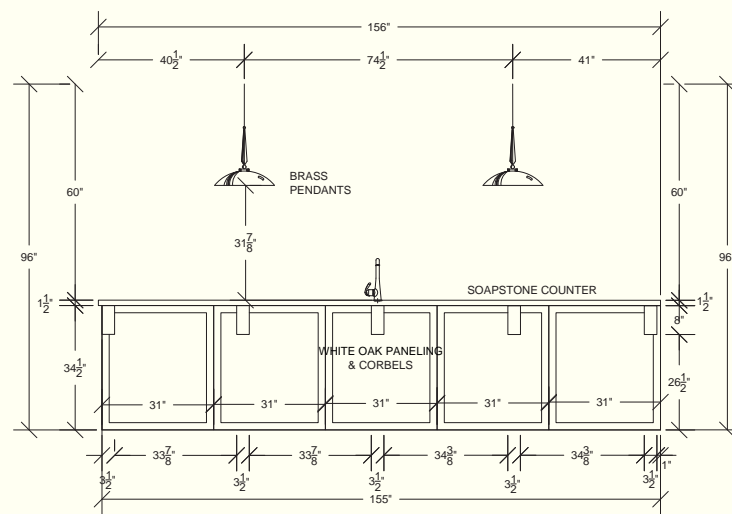
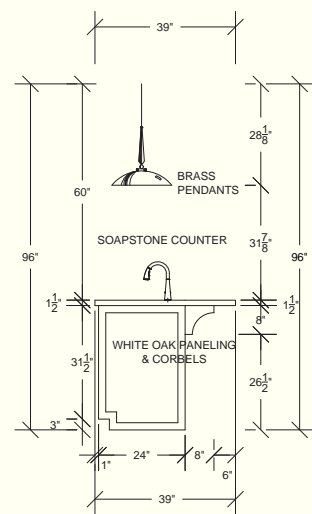
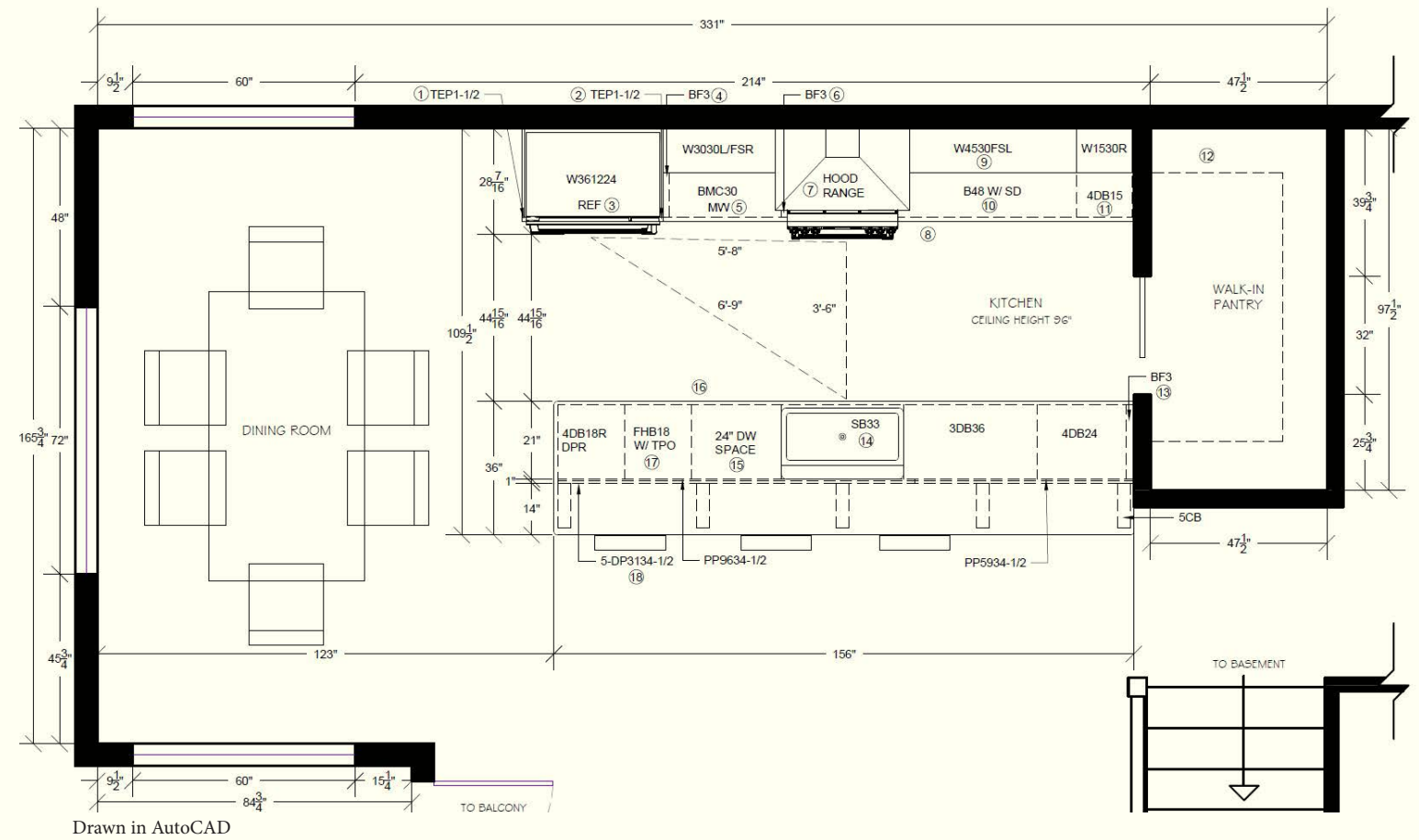
Drawn in AutoCAD & rendered in Photoshop

NKBA KITCHEN REMODEL

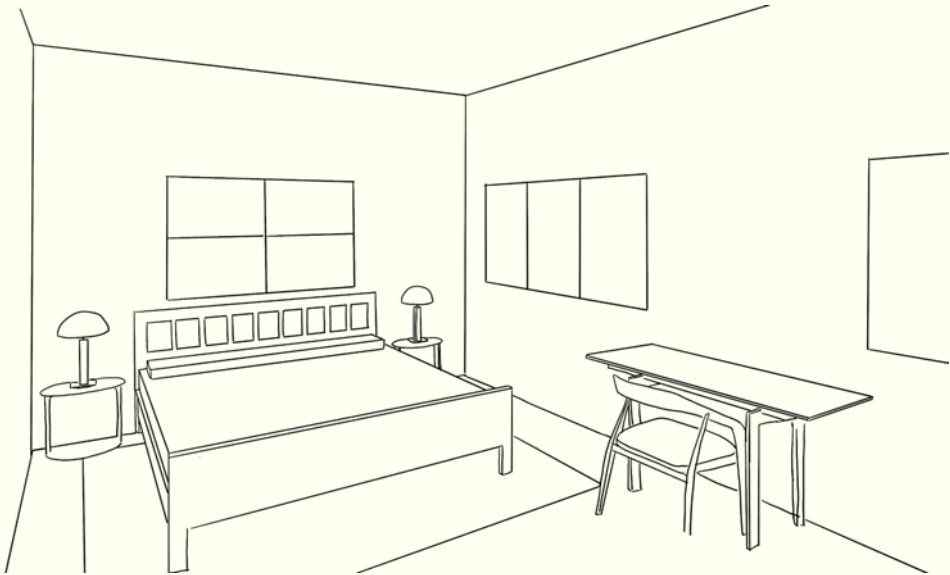


This single mom of three kids has requested a remodel of her kitchen to implement trends and improve her every-day life. The space requirements involve all new appliances, storage aids, space for three chairs at the island, six chairs around a table, space for one cook, and should follow NKBA guidelines.

NKBA KITCHEN REMODEL



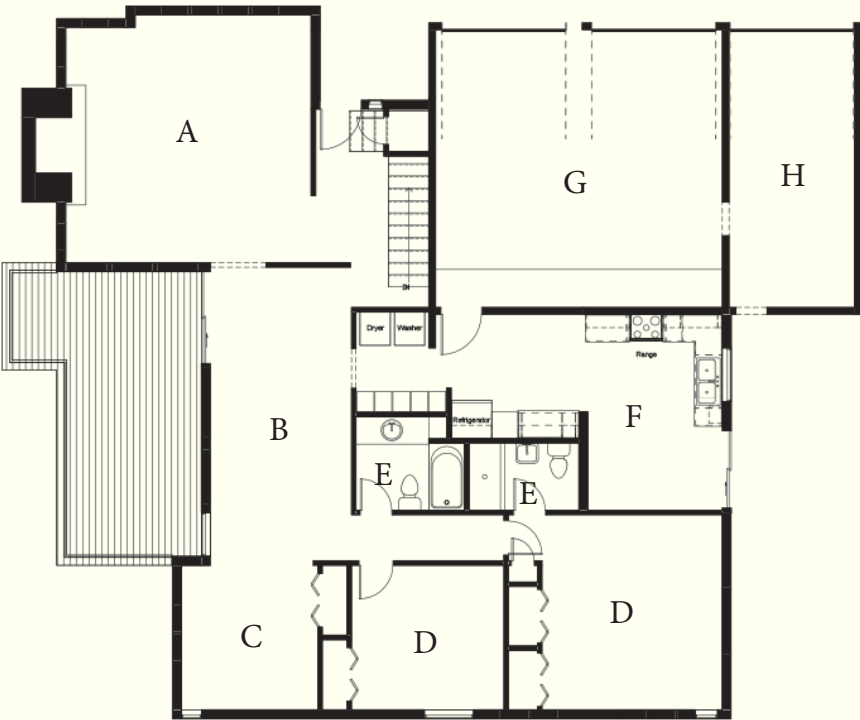
RESIDENTIAL COTSWOLDS REMODEL



The Swanson family has requested a remodel of their newly purchased house to create a home that suits their family needs. This design intends to bring in additional natural light, open the shared spaces, update appliances, implement Cotswold style throughout the home, raise the roofline, and refresh the exterior finishes to unite the interior and the exterior of the home.

RESIDENTIAL COTSWOLDS REMODEL

BEFORE PLAN

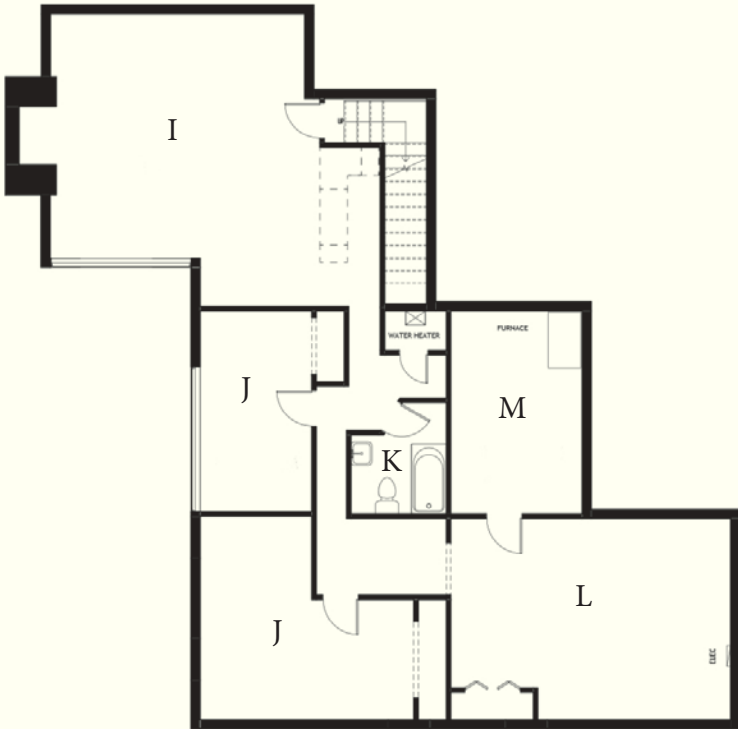


- Main Level
A- Living Room
B- Dining
C- Study
D- Bedroom
E- Bathroom
F- Kitchen
G- Garage
H- Shop

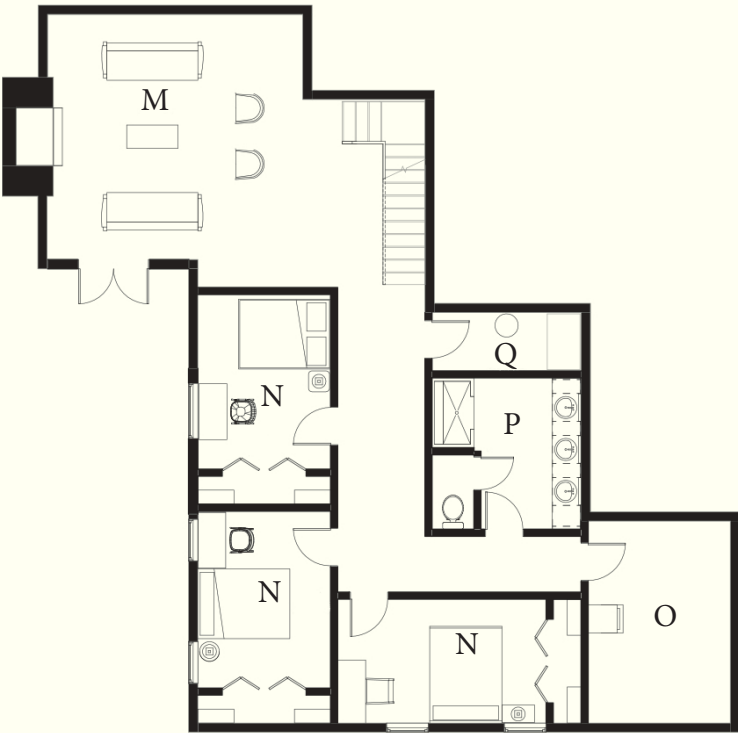
NEW PLAN



- Main Level
A- Living Room
B- Dining
C- Kitchen
D- Master Closet
E- Master Bath
F- Master Suite
G- Office
H- Pantry
I- Mudroom
J- Hall Bath
K- Garage
L- Entry

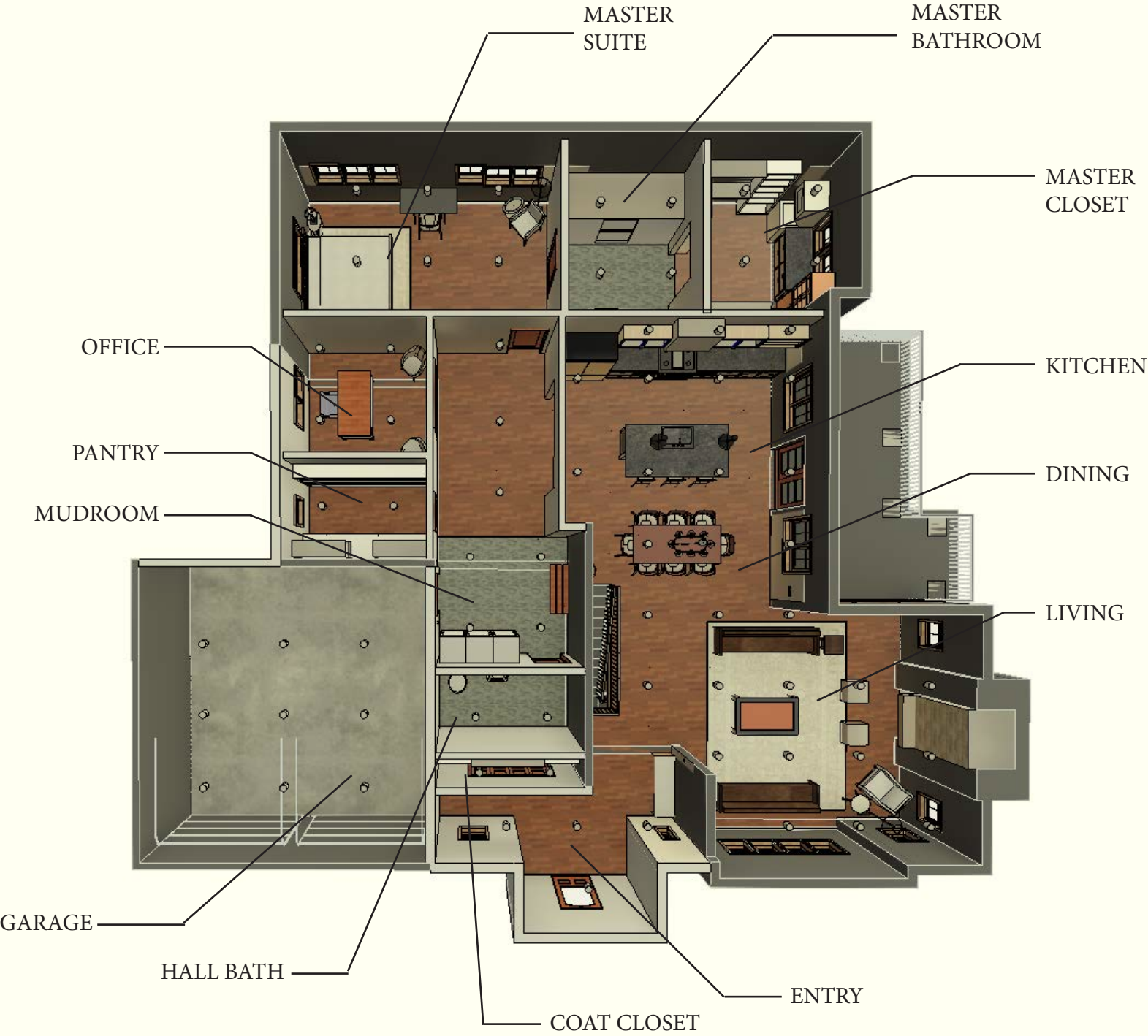


- Basement Level
I- TV Room
J- Bedroom
K- Bathroom
L- Storage
M- Furnace Room



- Basement Level
M- Living Room
N- Bedroom
O- Storage
P- Bathroom
Q- Furnace Room

RESIDENTIAL COTSWOLDS REMODEL



RESIDENTIAL COTSWOLDS REMODEL



Drawn & rendered in Revit



RESIDENTIAL COTSWOLDS REMODEL



Drawn & rendered in Revit



RESIDENTIAL COTSWOLDS REMODEL



Drawn & rendered in Revit



RESIDENTIAL COTSWOLDS REMODEL



Drawn & rendered in Revit



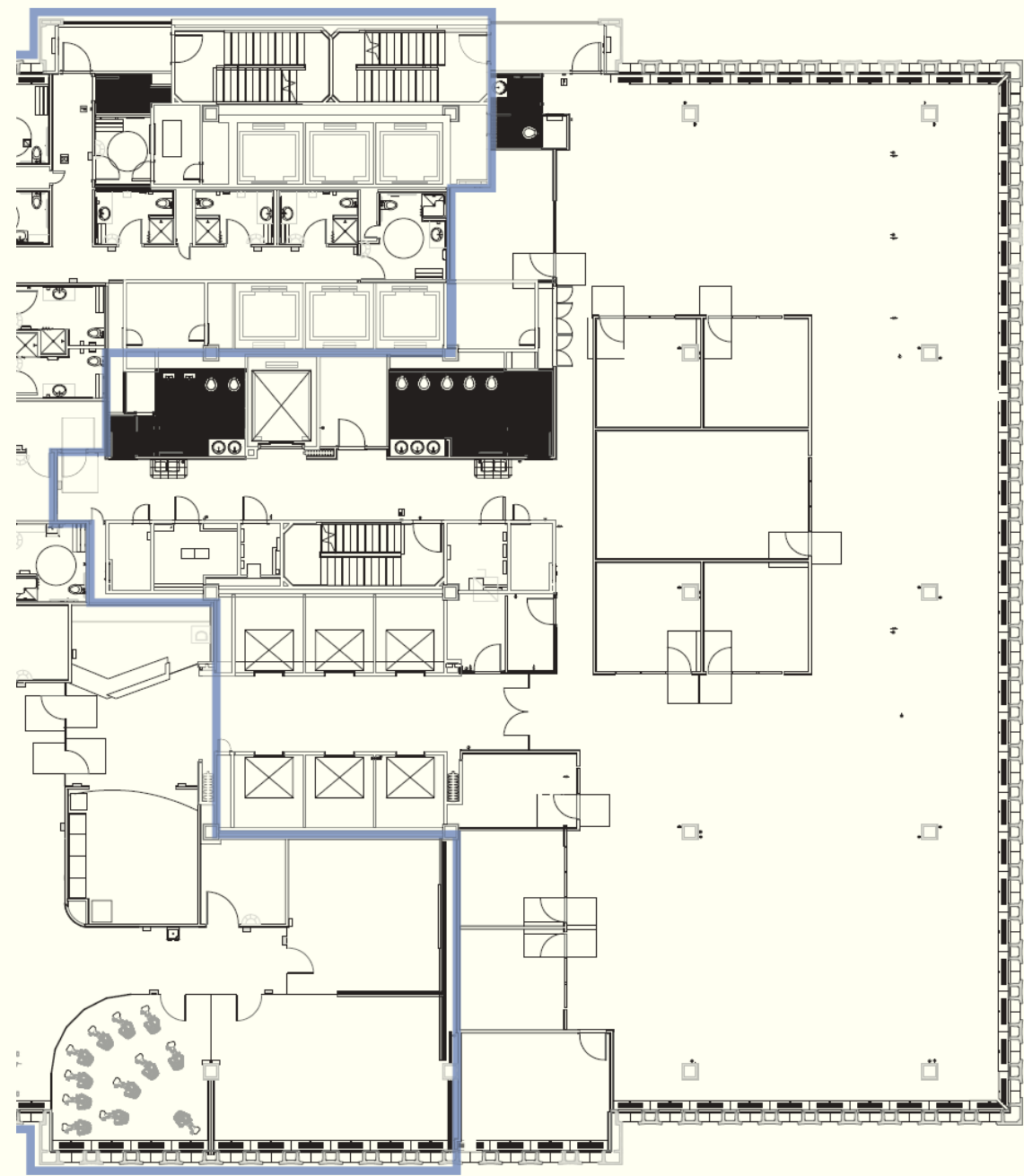
CHURCH OFFICE BUILDING REMODEL



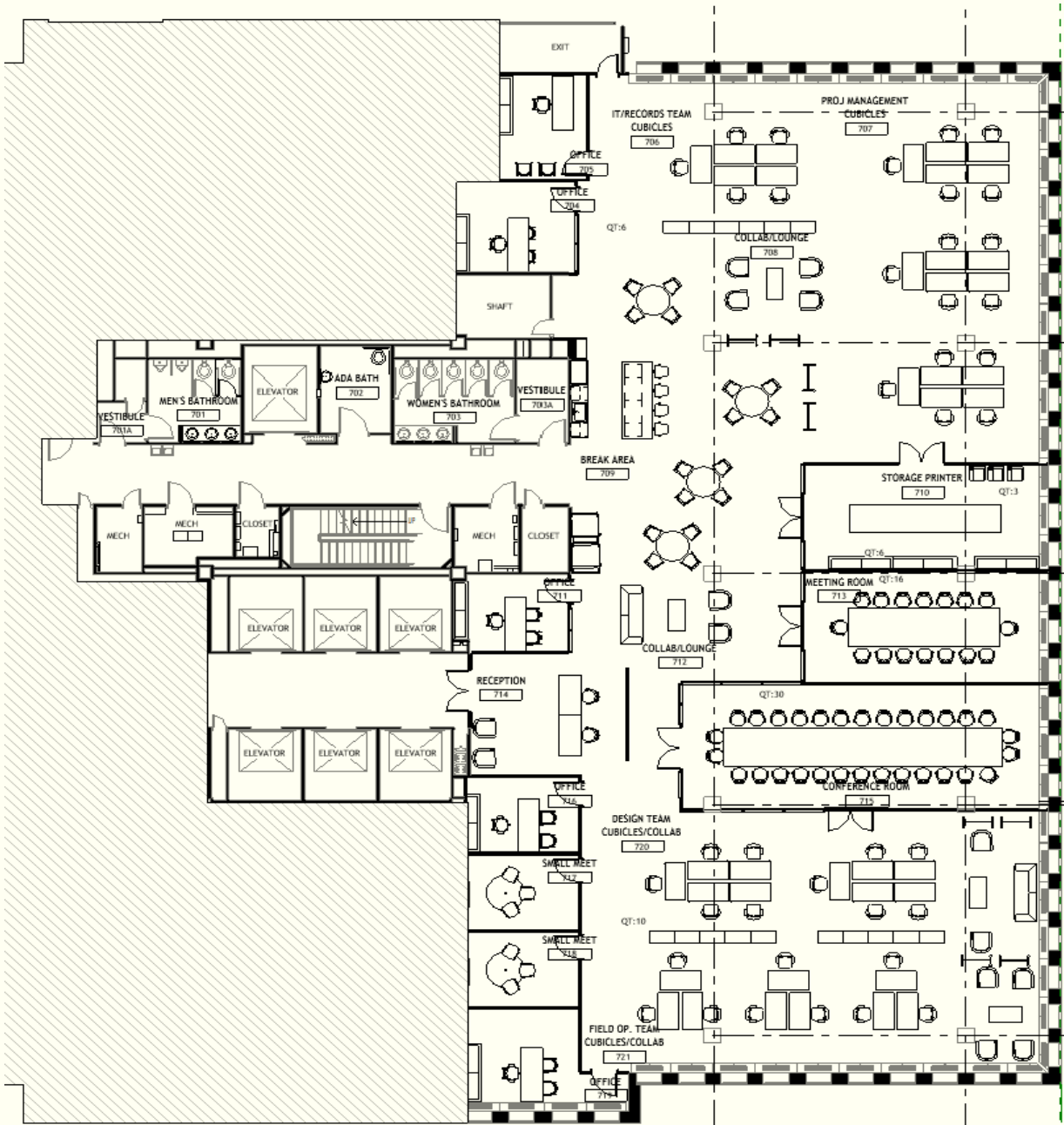
The Church Office Building has requested a floor remodel to create a new and welcoming hybrid office. The requirements involve desk space for four separate teams of thirty-nine total people, five closed offices, small group meeting spaces, one large meeting room for thirty people, a breakroom, and a reception desk area. The intent of this design is to bring in additional natural light, grounding colors and materials, and open the space to introduce a more functional flow.

CHURCH OFFICE BUILDING REMODEL

BEFORE PLAN



NEW PLAN



Drawn in Revit

CHURCH OFFICE BUILDING REMODEL



Wall Plaster



LVT Wood Flooring



Soapstone Counter



Break Chair



Collab Chair

CHURCH OFFICE BUILDING REMODEL



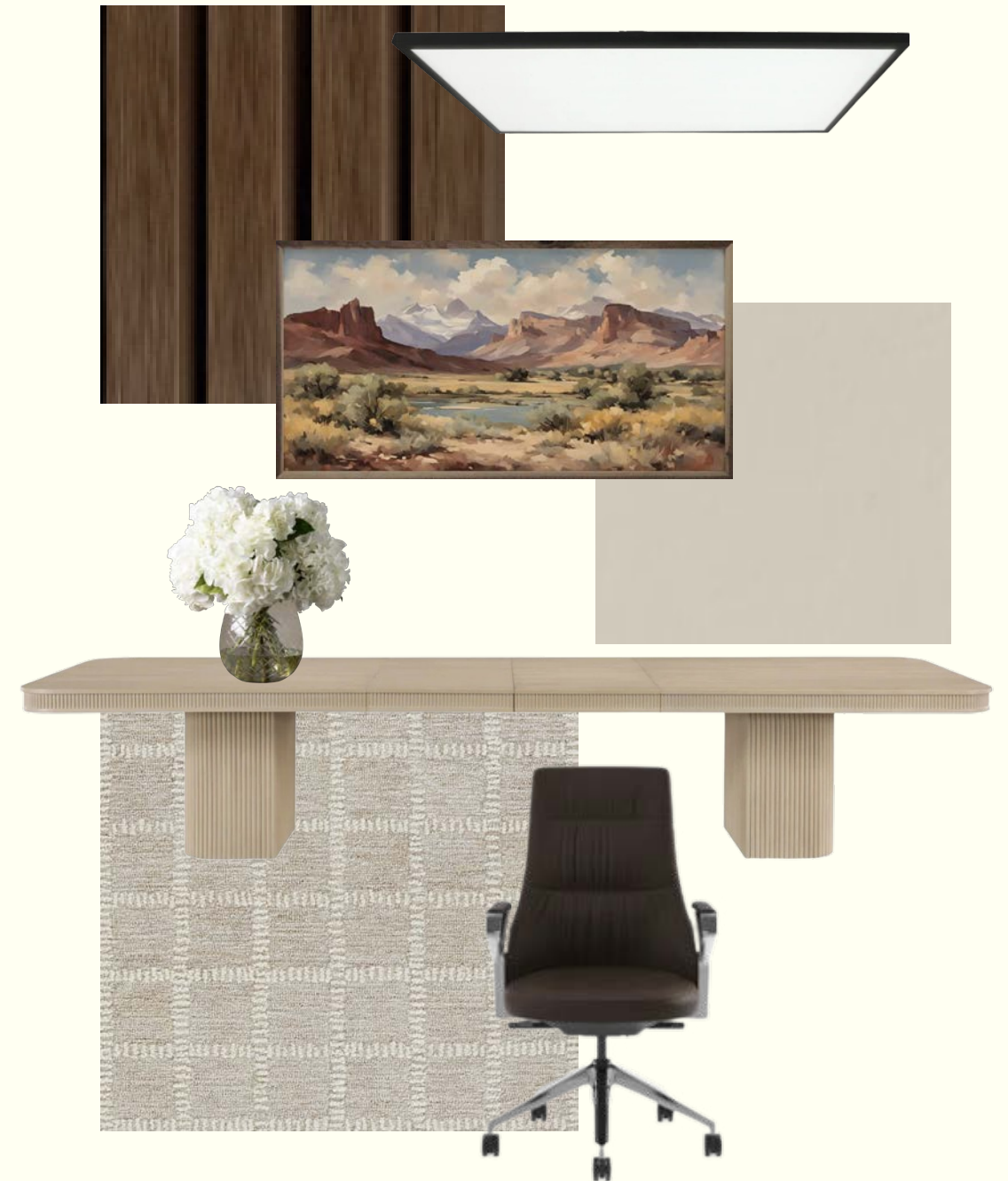
Drawn & rendered in Revit



CHURCH OFFICE BUILDING REMODEL



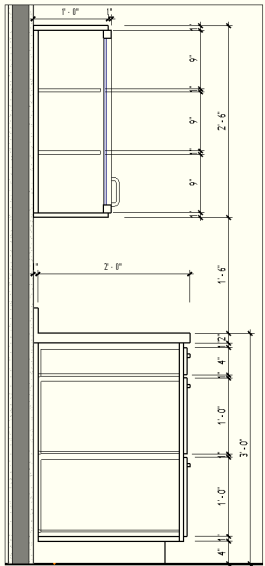
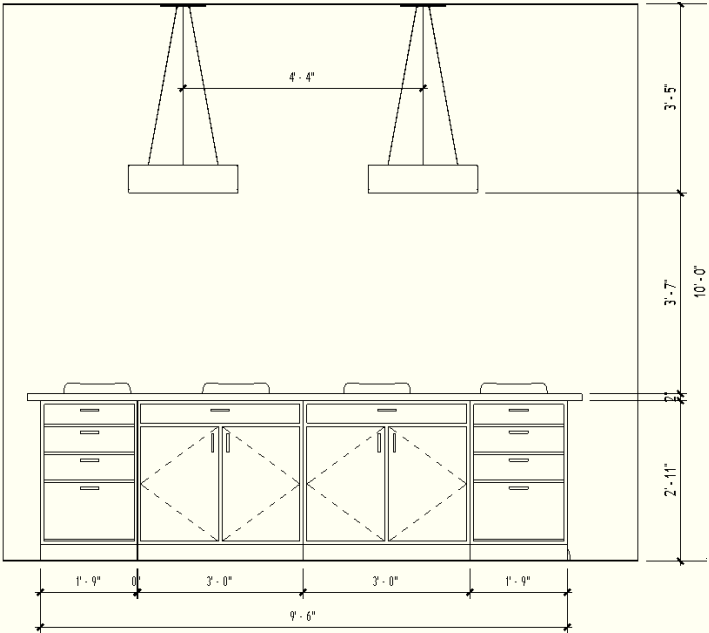
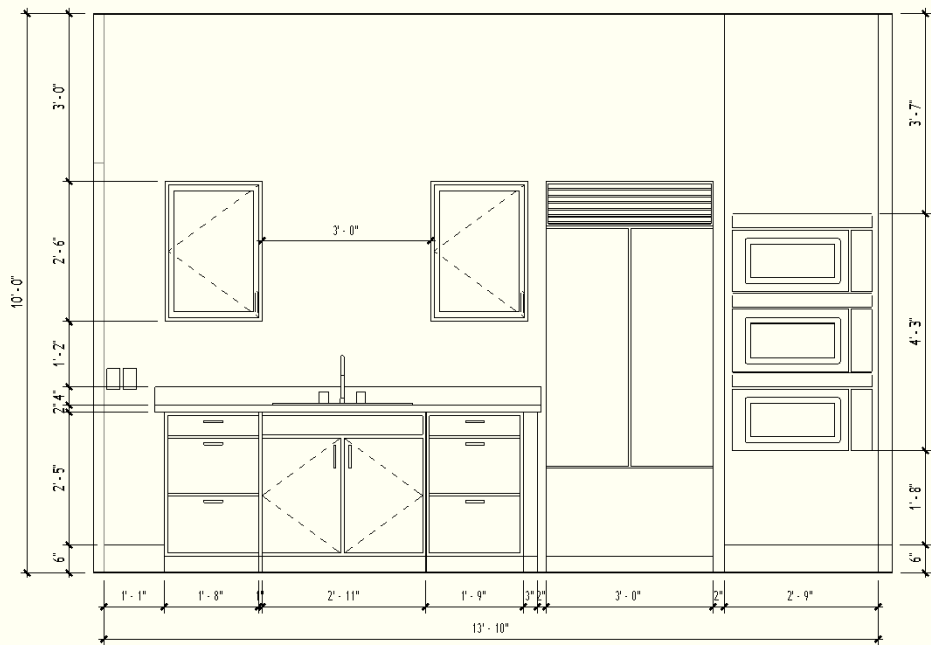
Drawn & rendered in Revit



CHURCH OFFICE BUILDING REMODEL



Drawn & rendered in Revit



MUSEUM BUILD

The client requested a new build of an organic museum. The intent of this design was to create an open space, filled with natural light where one could spend hours resting, eating, and viewing art.



Drawn & rendered in SketchUp

MUSEUM BUILD



Drawn & rendered in SketchUp

MUSEUM BUILD



Drawn & rendered in SketchUp