



PORTFOLIO

KAMILLE WRIGHT

INTERIOR DESIGN - ENSIGN COLLEGE

TABLE OF CONTENTS



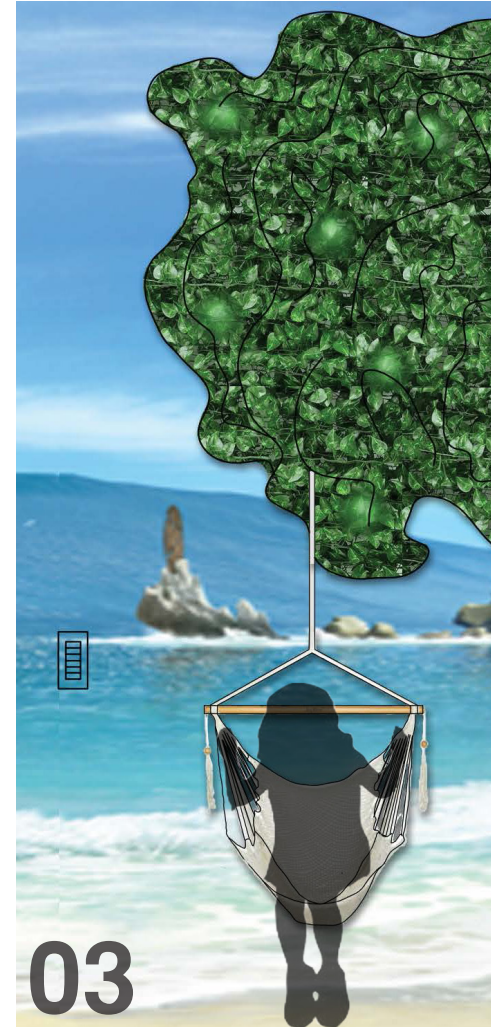
01

THE CHURCH
OFFICE BUILDING



02

HARMON HOME
REMODEL



03

CRUISE SHIP - KIDS
CLUB



04

GOLDING KITCHEN
REMODEL

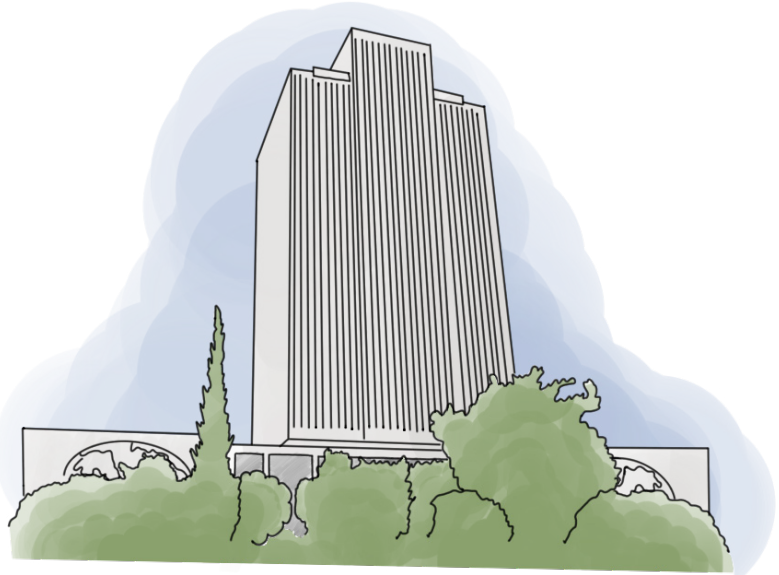


05

JONES BATHROOM
REMODEL

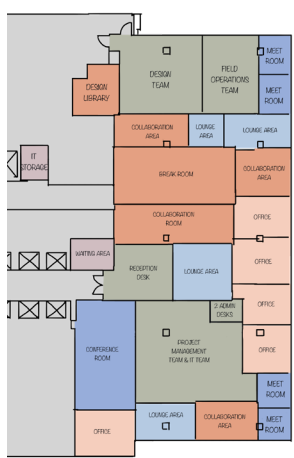
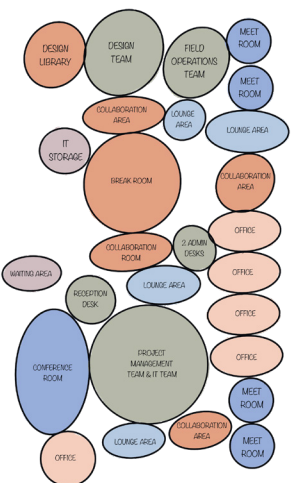
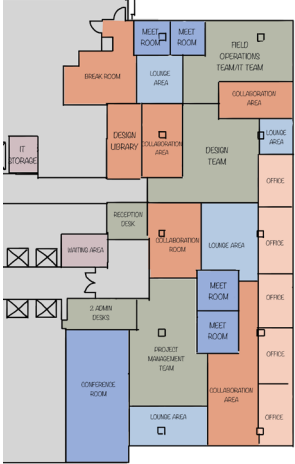
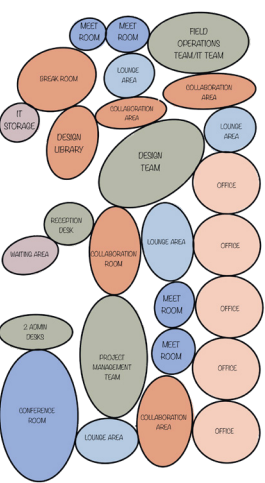
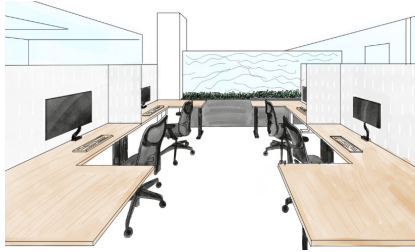
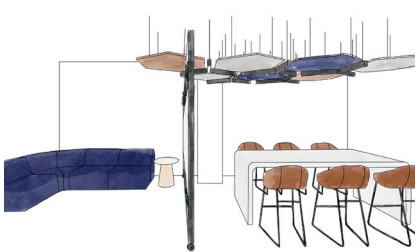
THE CHURCH OFFICE BUILDING

CLIENT | THE CHURCH OF JESUS CHRIST OF LATTER-DAY SAINTS
SQUARE FOOTAGE | 10,000 SQFT
LOCATION | SALT LAKE CITY, UTAH
SOFTWARE | REVIT & PHOTOSHOP



PROJECT DESCRIPTION

The Church of Jesus Christ of Latter-day Saints requested a remodel of the 7th floor of The Church Office Building. The design purpose is to update the existing commercial office space into a **new** and **welcoming hybrid work-space**. The goal is to successfully transition employees back to the office by creating a highly **functional** environment. Key design elements include **wider aisles** and **smaller cubicles** to achieve an **open-concept floor plan**, promote **collaboration**, and implement **hybrid-type workstations**.



NATURAL LIGHT
THE ENERGY FOUNDATION
- Focus on maximizing **natural Light**.
- All employees can view the landscape.
- Balance **Comfort** and **Productivity**.



MINDFULNESS
SALESFORCE TOWER
- Focused on employees **mental health**.
- Created **mindfulness** zones on each floor for employees to take a break.



COLOR
UNITED HABITATION
- Le Corbusier wanted **dramatic contrast**
- Bring **energy** to residential spaces.
- Variety of **color** on apartment walls.

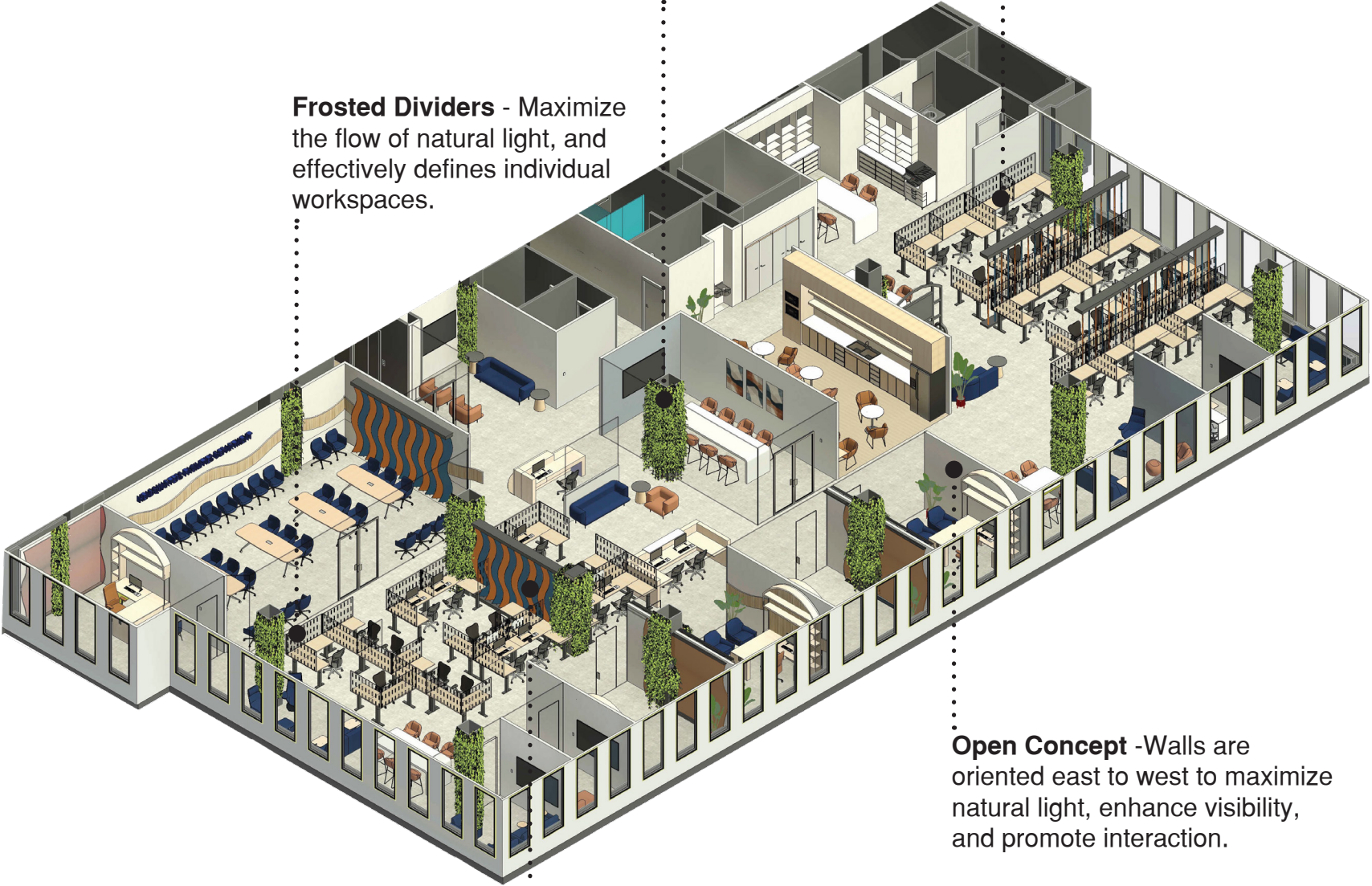


FLEXIBLE SEATING
AIRBNB PORTLAND OFFICE
- Main focus was to design a space where all employees can **belong**.
- Ensured a **variety** of work environments, **duability**, and **functionality**.

FLOOR PLAN



- | | | |
|----------------------------------|----------------------|--------------------------------------|
| ① ENTRY | ⑩ MEETING ROOM | ⑲ MEETING ROOM |
| ② WAITING AREA | ⑪ MEETING ROOM | ⑳ COLLABORATION AREA |
| ③ RECEPTION DESK | ⑫ LOUNGE AREA | ㉑ LOUNGE AREA |
| ④ COLLABORATION ROOM | ⑬ COLLABORATION AREA | ㉒ PROJECT MANAGEMENT/
IT REACORDS |
| ⑤ BREAK ROOM | ⑭ OFFICE | ㉓ 2 ADMIN DESKS |
| ⑥ COLLABORATION AREA | ⑮ OFFICE | ㉔ LOUNGE AREA |
| ⑦ LOUNGE AREA | ⑯ OFFICE | ㉕ CONFERENCE ROOM |
| ⑧ DESIGN LIBRARY | ⑰ OFFICE | ㉖ OFFICE |
| ⑨ DESIGN TEAM/
OPERATION TEAM | ⑱ MEETING ROOM | |



Frosted Dividers - Maximize the flow of natural light, and effectively defines individual workspaces.

Biophilic Design - The Goldfish plant is used on the columns to enhance well being and air quality.

Ergonomic Desk - Employees have the flexibility to sit or stand while working, a choice that promotes physical health.

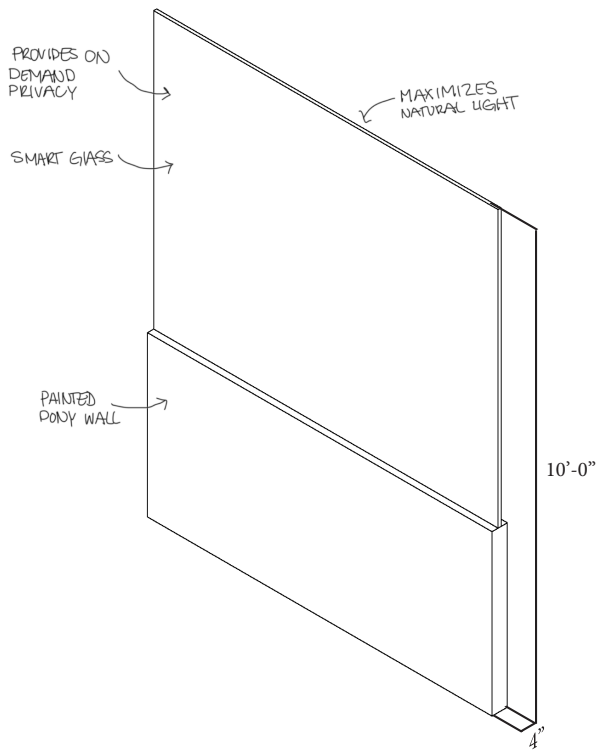
Open Concept -Walls are oriented east to west to maximize natural light, enhance visibility, and promote interaction.

Color Phsycology - The colors blue and orange are used to promote energy, enthusiasm, focus, and productivity.



RECEPTION DESK

Addressing the receptionist's request for **natural light** and visibility into the director's offices, a smart glass wall was implemented. This innovative feature gives the receptionist control to seamlessly transition the glass between **transparent** and **opaque** states, balancing **privacy** with an open view of the office.

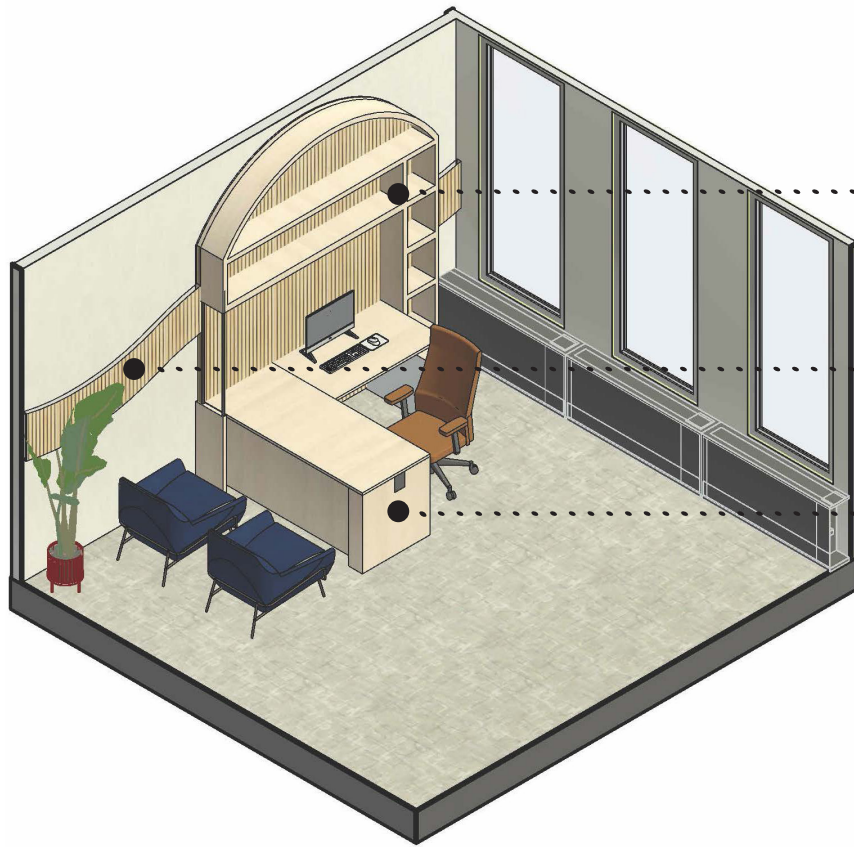


WAITING AREA



DIRECTOR OFFICE

Maximizing access to **daylight**, each office and meeting room provides views of the Salt Lake City valley, allowing **natural light** to penetrate the entire space. The Directors' offices are designed as **personal, rejuvenating** spaces for **relaxation** and **focus**. Additionally, two smaller, adjacent meeting rooms offer employees the necessary flexibility for quick huddles or focused **individual hybrid work**.



The **custom shelving** provides flexible storage solutions, specifically tailored to **integrate** with and support the **ergonomic desk**.

Acoustic panels are utilized to manage and control the overall sound of the office.

Adjustable-height desks allow employees to choose between **standing** or **sitting** during office hours, providing the **flexibility** and ergonomic **comfort** necessary for their individual workspaces.



DIRECTOR OFFICES



MEETING ROOM

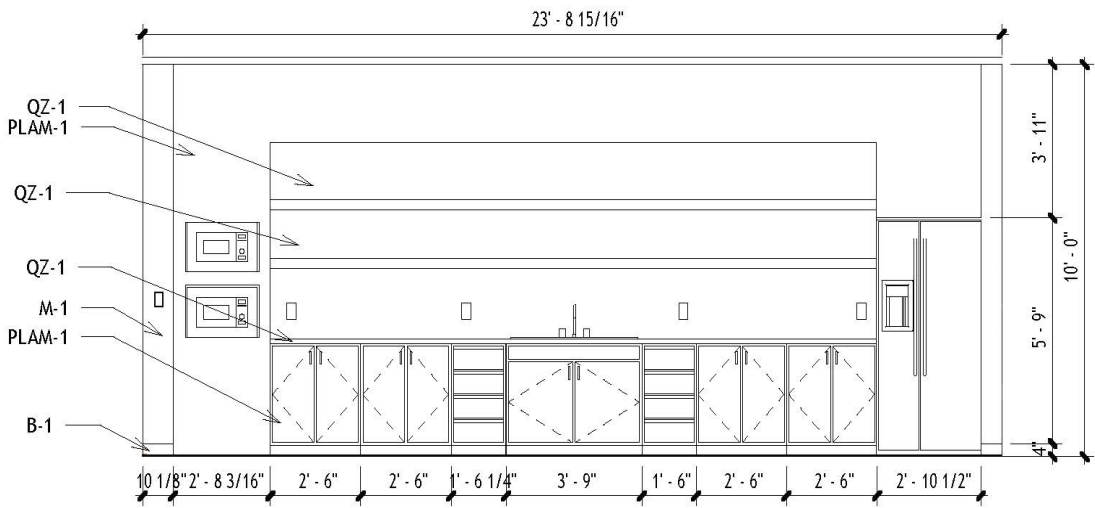


MEETING ROOMS

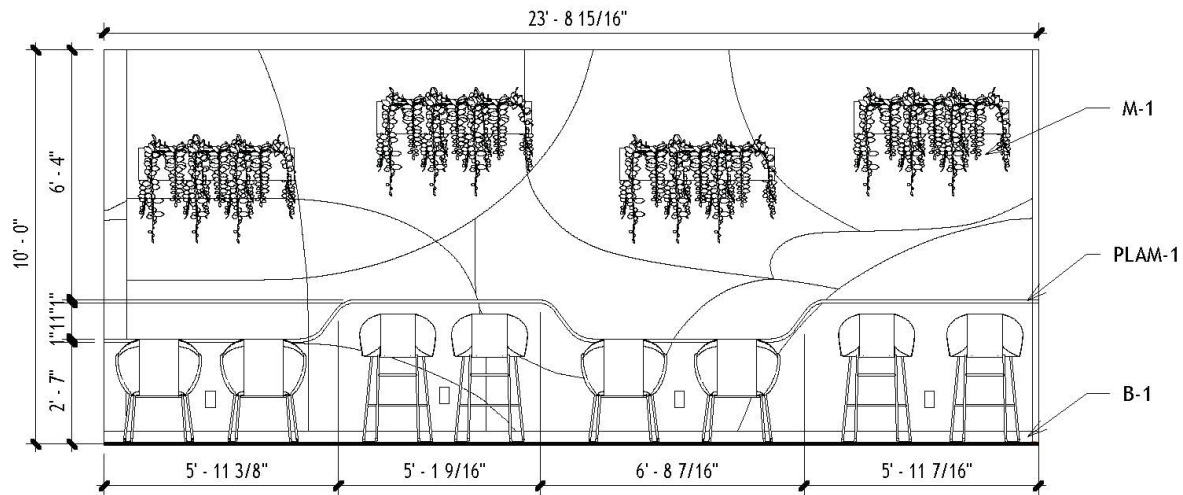


BREAKROOM

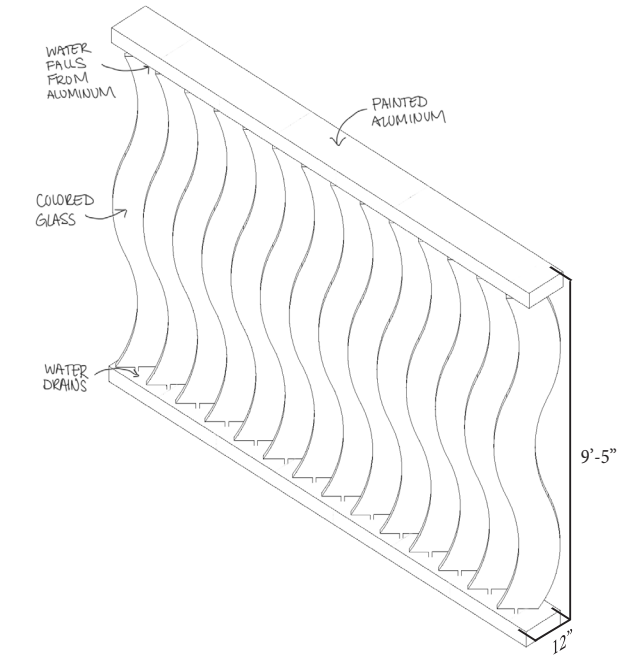
This break room is a vibrant **social** gathering that promotes employee **connection** and **re-energization**. Flexible design is key, featuring both sitting and standing-height tables. The break rooms unique atmosphere is highlighted by a hand-painted mural, which promotes **excitement** and **fun**.



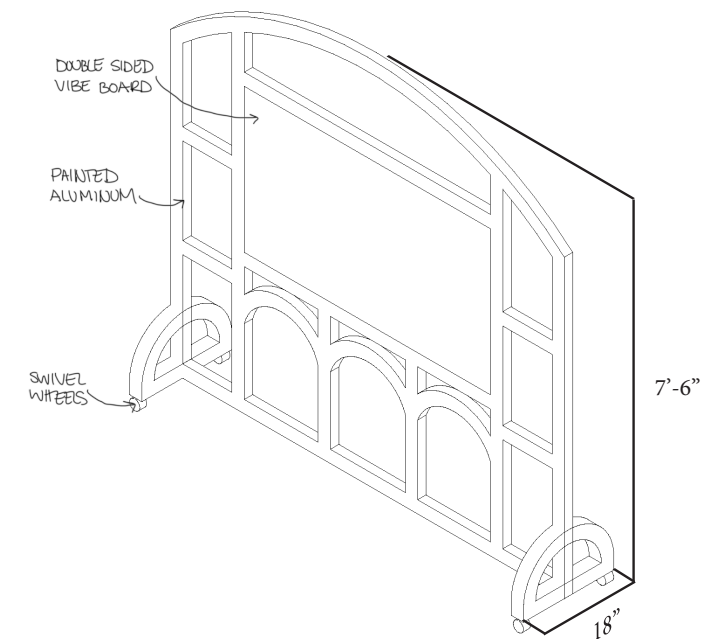
4 BREAK ROOM NORTH ELEVATION
1/4" = 1'-0"



8 BREAK ROOM SOUTH ELEVATION
1/4" = 1'-0"



Each team area is carefully designed to balance **social collaboration** and **individual privacy**. The custom waterfall feature, inspired by the Salesforce Tower, incorporates the colors Firenze and Symphony Blue, while the flowing water promotes **mindfulness**. This feature is intentionally divided to maximize the flow of **natural light** into the core of the office.



Throughout the building, the collaboration and lounge areas are intentionally designed adjacent to one another. This design came from the idea of flexible seating from the Airbnb Portland Office. This custom divider allows the spaces to be easily **combined** or **separated** to meet immediate needs for **privacy** or **expanded** use.

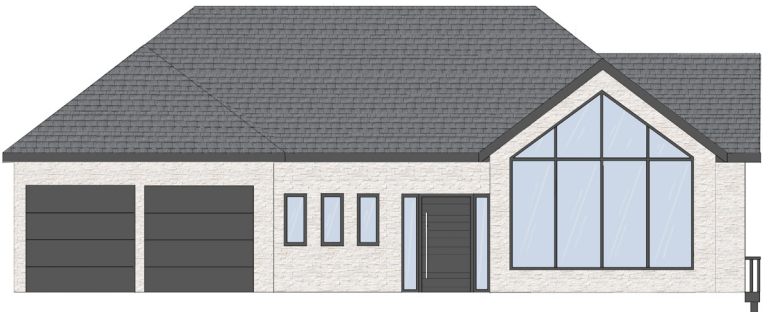
HARMON HOME REMODEL

CLIENT | SHELLY HARMON

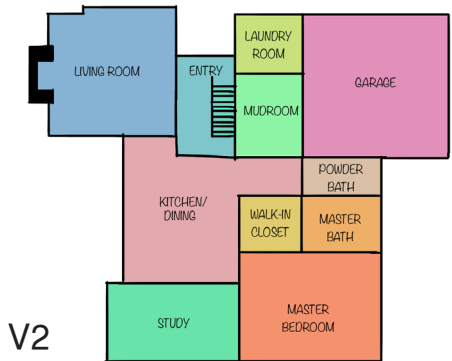
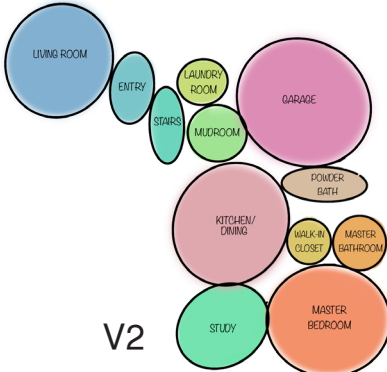
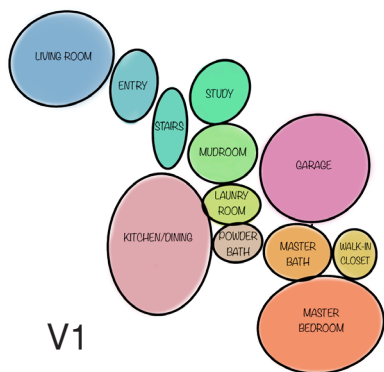
SQUARE FOOTAGE | 3,077 SQFT

LOCATION | BOUNTIFUL, UTAH

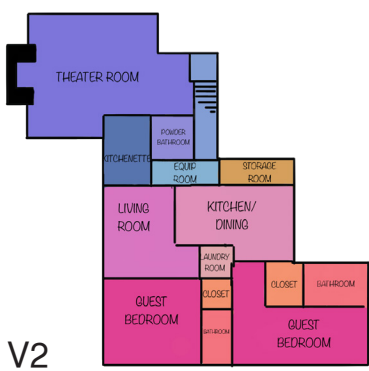
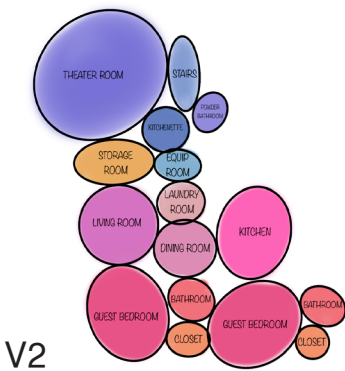
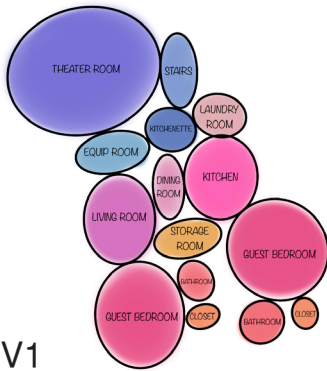
SOFTWARE | REVIT & PHOTOSHOP



MAIN LEVEL



BASEMENT LEVEL



Ms. Harmon is seeking her "forever home" - a space where she can comfortably age in place with full accessibility. To meet this need, the design features an **open-concept** plan allowing her to navigate her living space with ease. The main floor will be dedicated to Ms. Harmon's use, while the basement will be converted into an Airbnb for guests or renters. This project will showcase a seamless blend of **Scandinavian** and **Contemporary** design styles.



CHECKERED BOARD FLOORING

PALACE OF VENARIA
- **Black** and **white** tile that enhances its **grander** and **opulence**
- Inspired by the roman designs from the **baroque** and **renaissance** period.

MINIMALISM & LIGHT

VENNISIA LIBRARY
- Well known for its beautiful scandinavian design
- Provides curves that **flow** throughout the space
- Overall intent of design was **minimalism** and enhancing **natural light**

LARGE GLASS WINDOWS

OSLO OPERA HOUSE
- Snohetta's design intent was to create a place where all feel **welcomed** and enjoy **Oslo's views**.
- Design intent was accomplished by incorporating **tall windows**, minimal framing, glass, and **oak** that **lines** the interior of the building.

MAIN LEVEL FLOOR PLAN

- ① ENTRY
- ② LIVING ROOM
- ③ KITCHEN
- ④ STUDY
- ⑤ MASTER BEDROOM
- ⑥ WALK-IN CLOSET
- ⑦ MASTER BATHROOM
- ⑧ POWDER BATHROOM
- ⑨ MUDROOM
- ⑩ LAUNDRY ROOM
- ⑪ GARAGE



BASEMENT LEVEL FLOOR PLAN

- | | |
|-----------------------|---------------------|
| ① THEATER ROOM | ⑧ LAUNDRY ROOM |
| ② KITCHENETTE | ⑨ GUEST BEDROOM #1 |
| ③ POWDER BATHROOM | ⑩ GUEST BATHROOM #1 |
| ④ EQUIPMENT ROOM | ⑪ GUEST CLOSET #1 |
| ⑤ STORAGE ROOM | ⑫ GUEST BEDROOM #2 |
| ⑥ LIVING ROOM | ⑬ GUEST BATHROOM #2 |
| ⑦ KITCHEN/DINING ROOM | ⑭ GUEST CLOSET #2 |



STORY BOARD SKETCHES



Small contemporary kitchenette is designed around **minimalism** and **functional** to support the needs of the theater room.



Designed for Ms. Harmon's comfort, the Living Room utilizes **neutral finishes**, **textures**, and **large windows** to enhance **natural light**.



This kitchen demonstrates a **functional** space that blends Scandinavian Contemporary **warmth** with the **contrast** of black appliances and fixtures.



Ms. Harmon's study is a **personal, focused** work-space designed to promote **concentration** while providing ample **storage** for her needs.



The Master Bedroom is designed as a **calm, minimal sanctuary** for rest, achieved using a **light color palette** accented with browns and black for **warmth** and **contrast**.

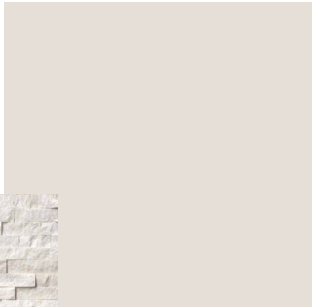


The entryway features **checkered board flooring** inspired by the **Palace of Valencia** and showcases Ms. Harmon's favorite painting.



LIVING ROOM

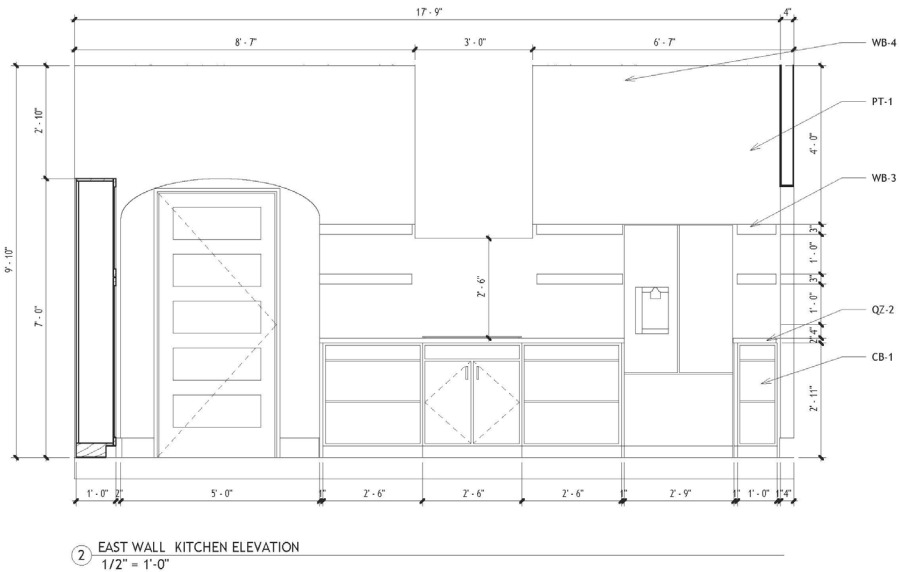
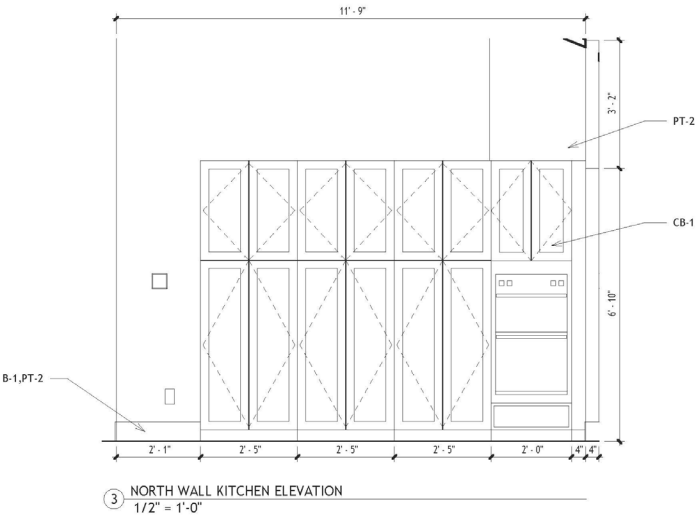
Located directly off the entryway, the living room is the first space encountered. The **large glass windows** (inspired by the Oslo Opera House) immediately capture the view, while **neutral finishes** and **textures** produce a **comfortable** and **inviting** atmosphere.





KITCHEN

Serving as the heart of the home, this kitchen balances **minimalism** and **light** with the contrast of black appliances and fixtures. It achieves both **functionality** and **warmth** through integrated storage (including a twelve-inch-deep pantry wall and floating shelves) and the aesthetic appeal of the vaulted ceiling enhanced by wood beams.





MASTER BEDROOM



AIRBNB KITCHEN



STUDY



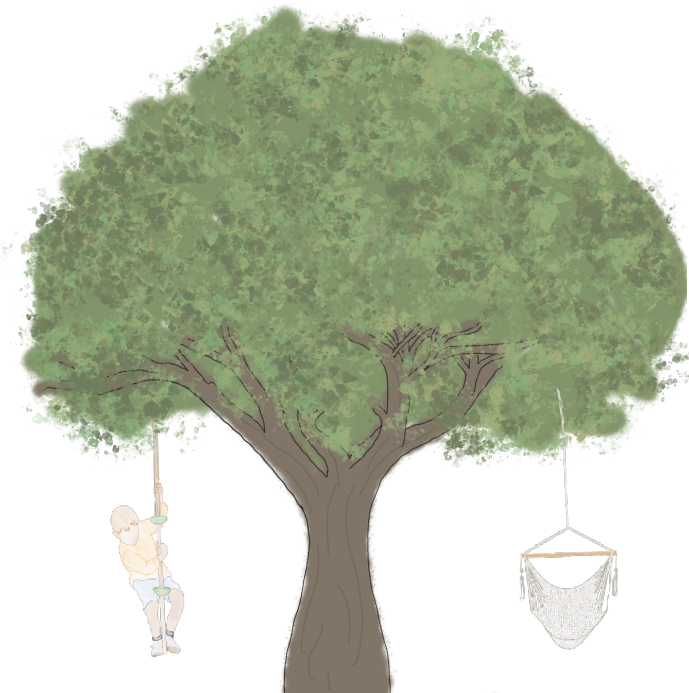
ENTRY



THEATER ROOM

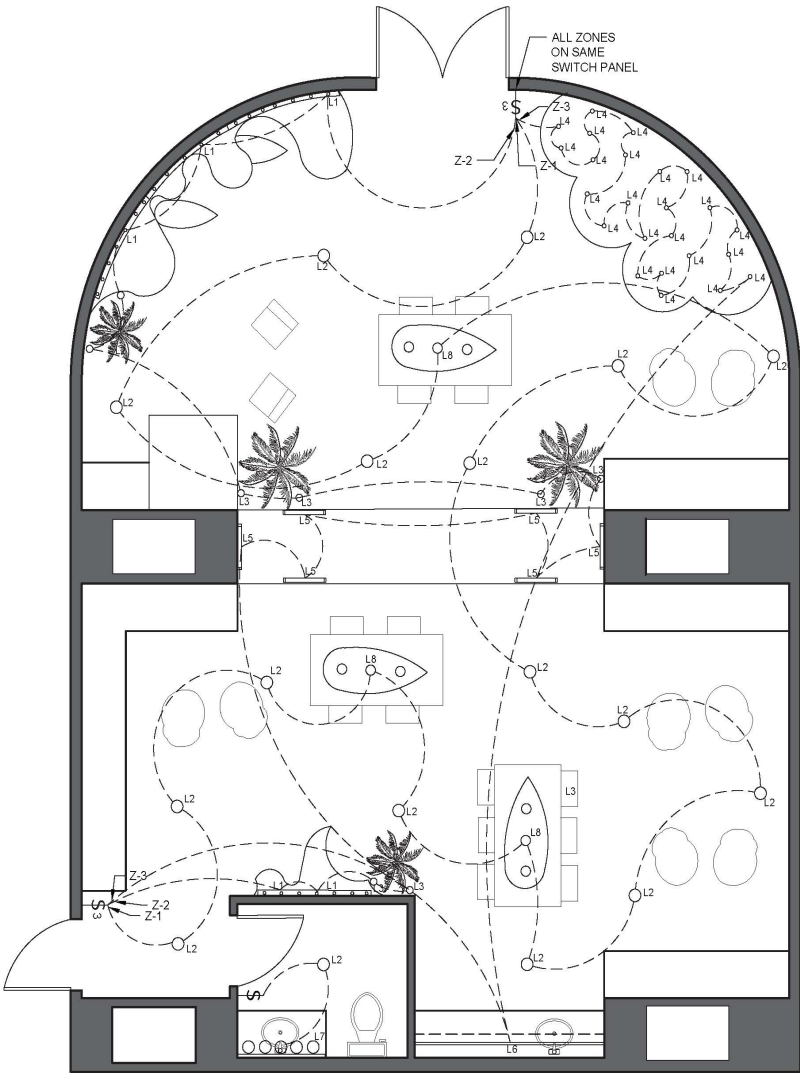
SURF'S UP KIDS CLUB-CRUISE SHIP

CLIENT | MR. JONES
SQUARE FOOTAGE | 800 SQFT
LOCATION | PORTMIAMI, FLORIDA
SOFTWARE | AUTO CAD & PHOTOSHOP



CLIENT PROFILE

Mr. Jones, head of his own cruise line, requested an **interactive** and **exciting** remodel of the kids' club. He specifically emphasized the need to integrate **creative lighting solutions**, including the design of a **custom light fixture**. This project was ultimately designed around the theme **"Surf's Up"** to enhance the experience for every child aboard his cruise ship.

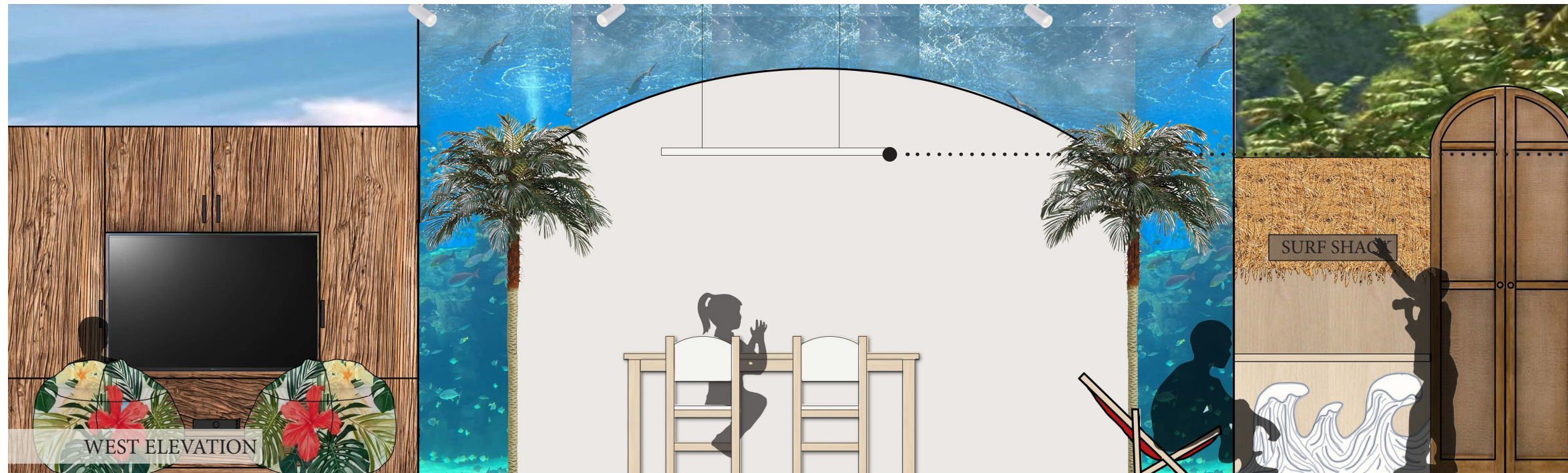


LIGHTING PLAN LEGEND		
TAG	DESCRIPTION	SYMBOL
L1	OCEAN WAVE PROJECTOR LIGHT	
L2	RECESSED CAN	
L3	WIDE ACCENT LIGHT	
L4	LED WELL LIGHT	
L5	LED AQUARIUM LIGHT	
L6	UNDER CABINET LIGHT BAR	
L7	VANITY LIGHT	
L8	SURFBOARD CEILING LIGHT	
	THREE WAY SWITCH	\$3
	SINGLE SWITCH	\$

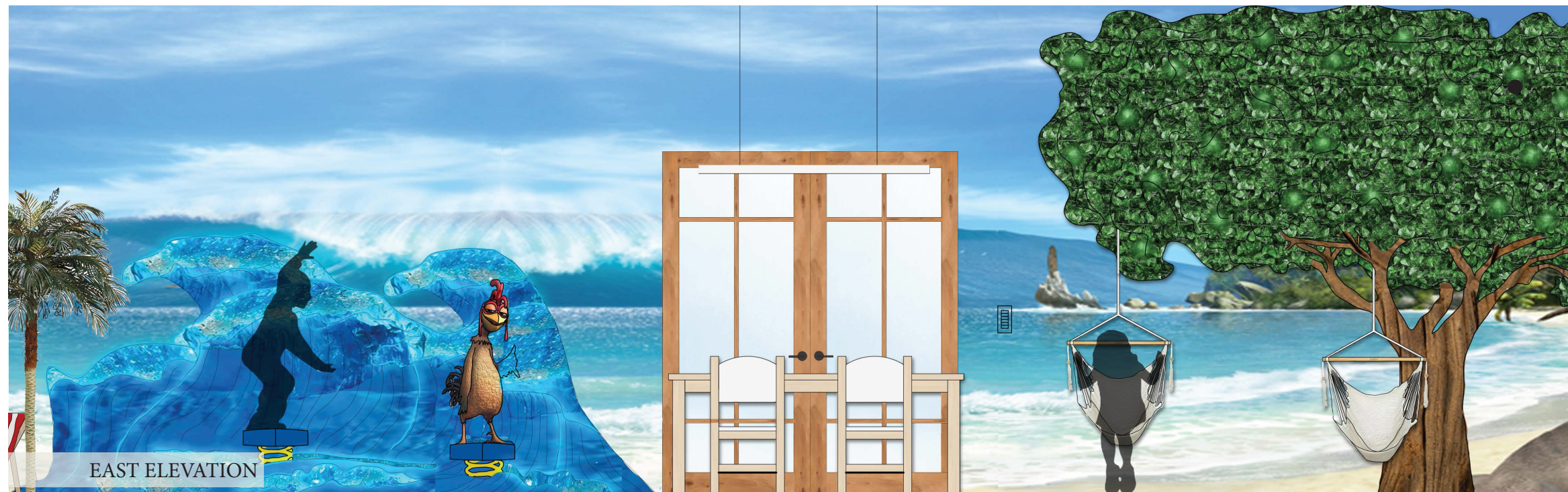
MASTER CONTROL	
Z-1	ZONE 1
Z-2	ZONE 2
Z-3	ZONE 3



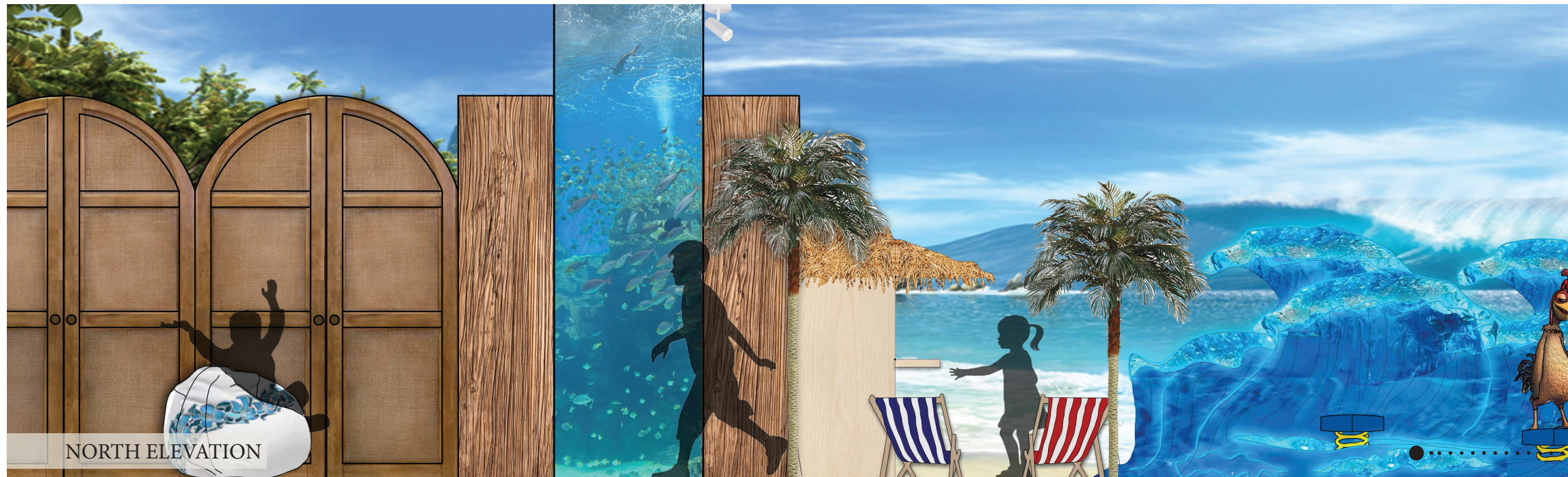
- 1 ENTRANCE
- 2 BOARD GAME AREA
- 3 TREE SWINGS
- 4 VIDEO GAME AREA
- 5 SURF SHACK
- 6 WAVE WALL
- 7 UNISEX BATHROOM
- 8 WATER AQAURIUM
- 9 SNACK TABLE
- 10 SNACK PREP AREA



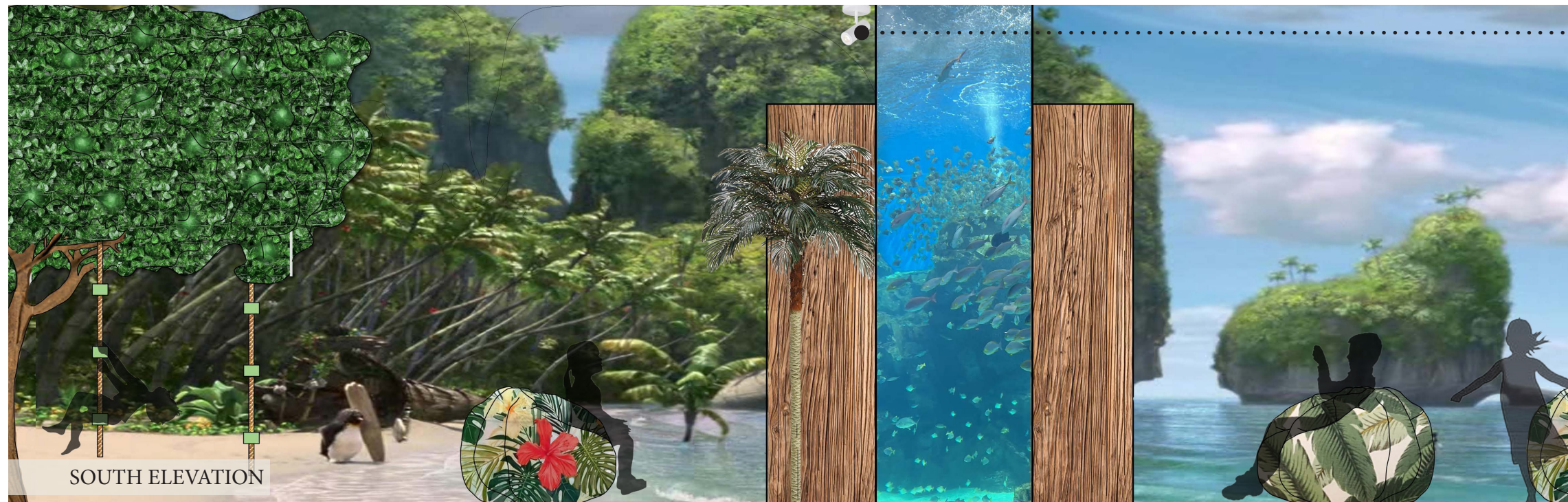
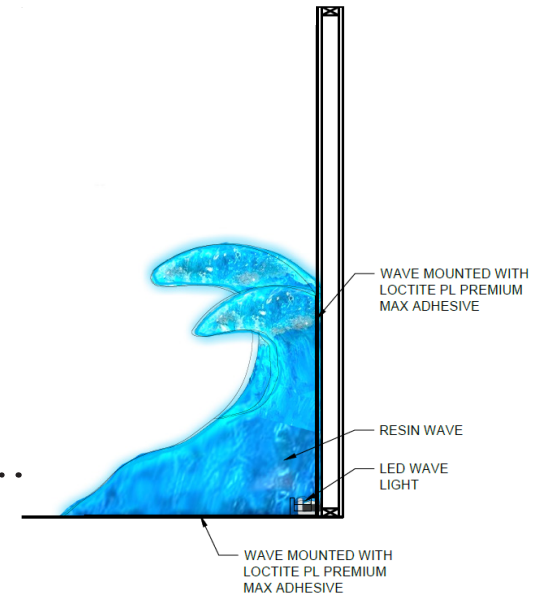
Suspended surfboard lights hang directly above the children's snack and board game tables. This element is not only a **playful** ceiling feature but also provides essential **task** lighting for the children's activities.



RGB LED downlights are mounted within the ceiling, projecting a vibrant green light that penetrates the tree. This strategic illumination transforms the tree feature into a **glowing, dynamic** element that **dramatically** enhances the **fun** and **excitement** of the space.



The custom wave light wall is designed to provide an **interactive** and **immersive** experience for the children. This feature will make them feel as if they are **actively surfing** on a wave alongside their friend, Chicken Joe!



The monopoint light is positioned on the ceiling to illuminate the palm trees, creating an emphasis of shadows casted on the floor. This effect mimics **natural sunlight** streaming down through the palm trees as if the children were playing outside in the sun.

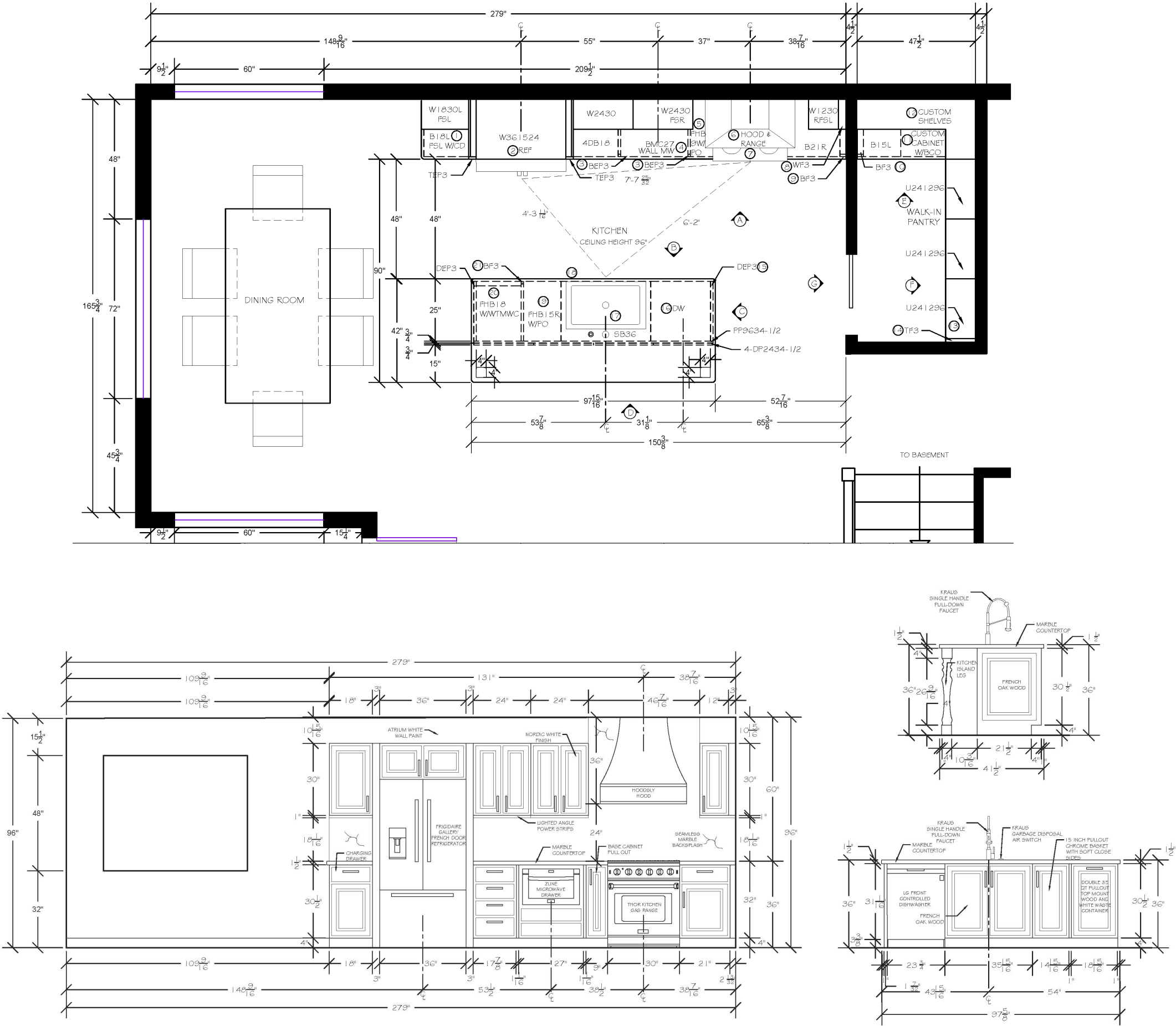
GOLDING KITCHEN REMODEL - NKBA

CLIENT | MS. GOLDING
SQUARE FOOTAGE | 370 SQFT
LOCATION | LEHI, UTAH
SOFTWARE | AUTO CAD & REVIT



CLIENT PROFILE

Ms. Golding requested an updated kitchen to meet the needs of her and her two children. The design will adhere to the National Kitchen and Bath Association (NKBA) standards to ensure **optimal convenience, safety, and functionality**. Aesthetically, the kitchen will blend the **transitional style** with **contemporary** design elements.

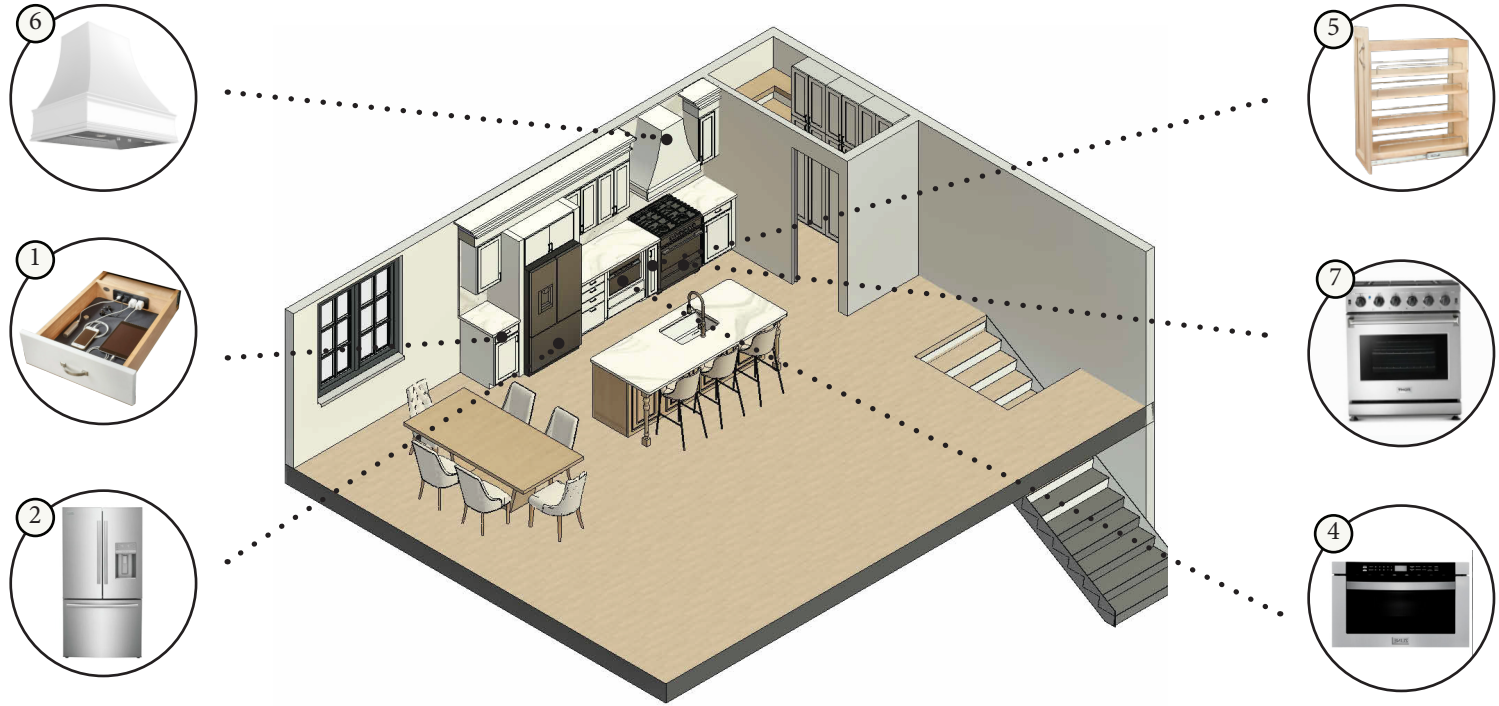




KITCHEN/DINING



WALK-IN PANTRY



- ① B18LFSL W/ CHARGING DRAWER
REV-A-SHELF, MDL. 4WCDB-18HSC-1
CHARGING DRAWER
15" W X 22 ³/₄" D X 4 ⁵/₁₆" H
CLEAR POLYURETHANE
- ② REFRIGERATOR
FRIGIDAIRE GALLERY, MDL. GRFS2853AF
27.8 CU. FT. FRENCH DOOR REFRIGERATOR
36" W X 33 ³/₁₆" D X 70" H
STAINLESS STEEL
- ③ BF3 CUT TO APPROX 1"
- ④ MICROWAVE
ZLINE, MDL. MWD-1
24 INCH 1000-WATT BUILT-IN MICROWAVE DRAWER IN STAINLESS STEEL
23 ¹/₂" W X 23 ¹/₁₆" D X 14 ²²/₂₅" H
STAINLESS STEEL
- ⑤ FHB9 W/ 8" WOOD BASE CABINET PULL OUT
REV-A-SHELF, MDL. 448-BC-8C
WOOD CLASSICS 8" WOOD BASE CABINET PULL OUT
8" W X 22.5" D X 25.5" H
MAPLE
- ⑥ HOOD
HOODSLY, MDL.3636
HOOD CURVED
36" W X 19.5" D X 36" H
WHITE

VENTILATION HOOD
VENT A HOOD, MDL. BH134SLD-SS
36" W X 19 ¹/₄" D X 12" H
300 CFM
STAINLESS STEEL
- ⑦ RANGE
THOR KITCHEN, MDL. LRG3001U
30 INCH GAS RANGE
30" W X 24 ³/₄" D X 36 ⁵/₁₆" H
STAINLESS STEEL
- ⑧ BF3 CUT TO APPROX 2 ¹³/₃₂"
- ⑨ BF3 CUT TO APPROX 2 ¹/₂"
- ⑩ CUSTOM CABINET W/ BLIND CORNER OPTIMIZER
CABINET
HINGE LOCATED ON RIGHT SIDE
30" W X 24" D X 36" H

REV-A-SHELF, MDL. 5PSP-15SC-CR
WIRE BOTTOM BLIND CORNER OPTIMIZER
26 ¹³/₃₂" W X 20 ¹³/₃₂" D X 21" H

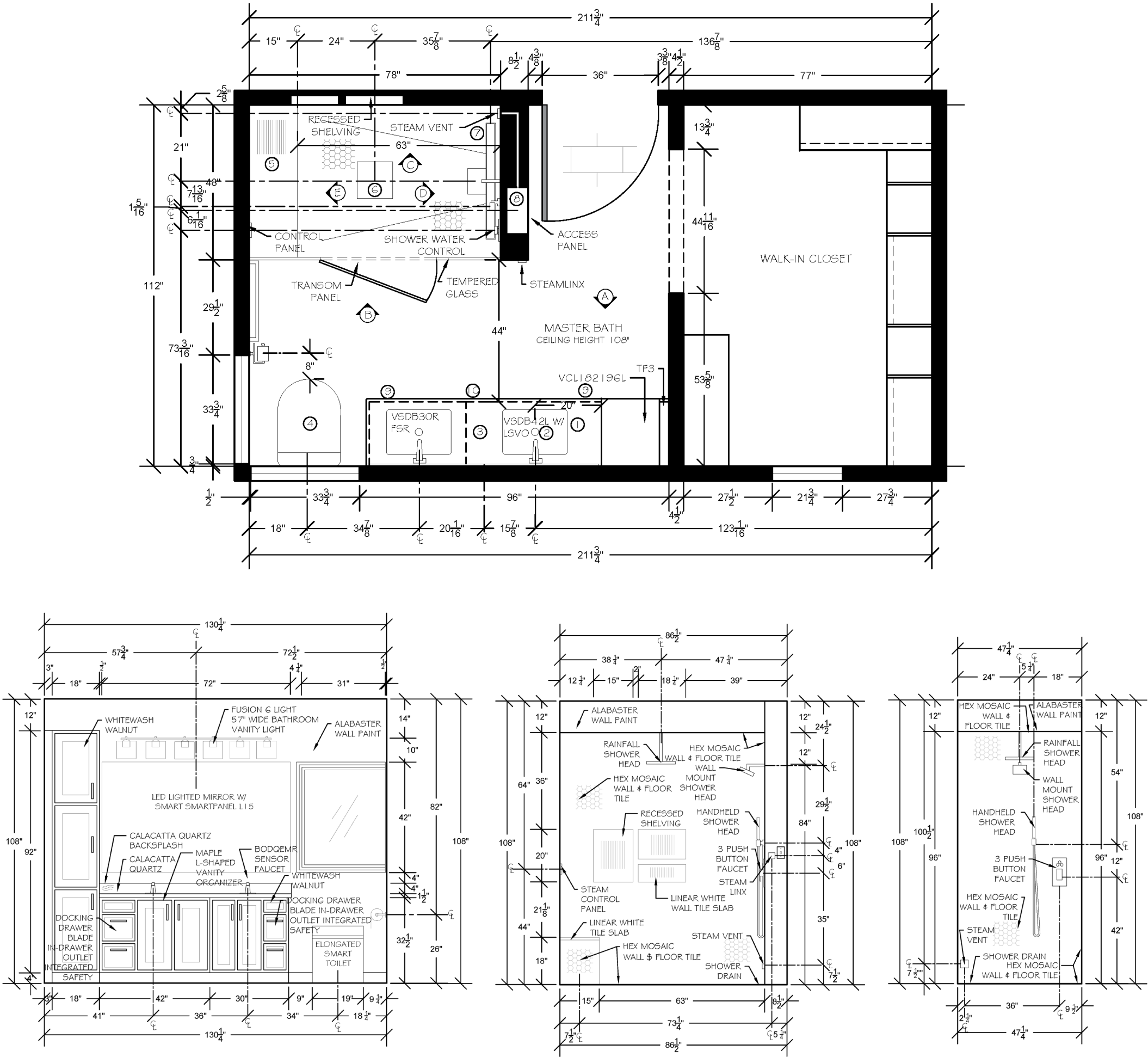
JONES BATHROOM REMODEL - NKBA

CLIENT | MR. & MRS. JONES
SQUARE FOOTAGE | 110 SQFT
LOCATION | SANTAQUIN, UTAH
SOFTWARE | AUTO CAD & REVIT



CLIENT PROFILE

Mr. and Mrs. Jones requested an update for their early 2000s Tuscan bathroom, seeking a design that is more **open, modern,** and **warm**. Their new master bathroom features a double vanity, a steam shower with two shower heads, a bench seat, and a smart toilet. This entire design adheres to the National Kitchen and Bath Association (NKBA) guidelines to ensure optimal **safety** and **functionality**.

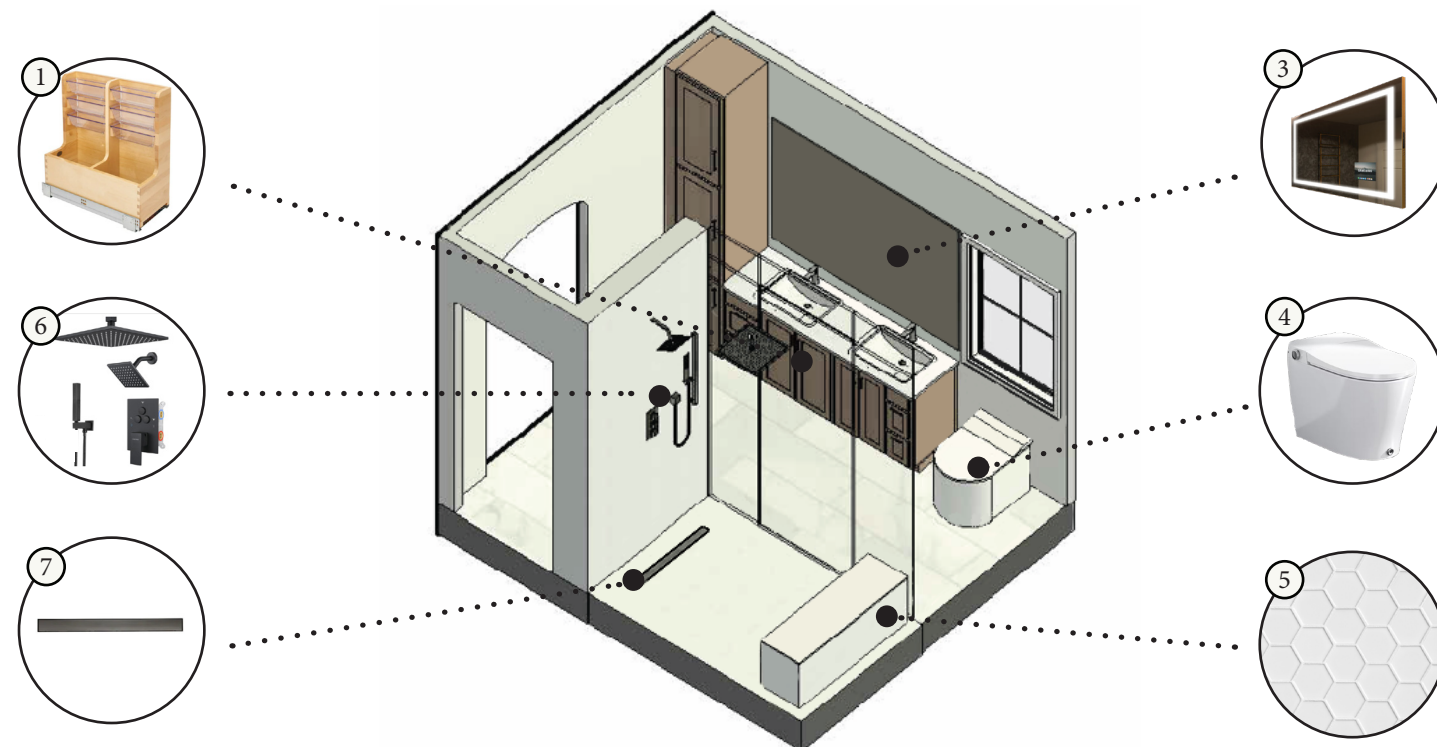




BATHROOM VANITY



BATHROOM SHOWER



- ① VSDB42L W/ MAPLE L-SHAPED VANITY ORGANIZER
REV-A-SHELF, MDL. #441-12VSBSC-1
8 ½" W X 18 ¾" D X 18 7/8" H
WOOD, CLEAR POLYURETHANE
- ② SINK
KOHLER LADENA UNDERMOUNT BATHROOM SINK WITH OVERFLOW
KOHLER, MDL. #K-2214-O
14 3/8" W X 20 7/8" L X 8 ½" H
VITREOUS CHINA

DRAIN
VIGO POP-UP DRAIN
VIGO, MDL. #VGO7000MB
1 3/4" W X 2 3/4" D X 1" H
MATTE BLACK

FAUCET
AUTOMATIC SENSOR TOUCHLESS BATHROOM SINK FAUCET
BODQEMR, MDL. #LX6205
7 2/25" W x 6 29/100" D x 4 18/25" H
MATTE BLACK
- ③ MIRROR
LED LIGHTED MIRROR WITH SMART SMARTPANEL L15
ARTFORMA, MDL. #L15
72" W X 2" D X 42" H
SILVER
- ④ TOILET
ELONGATED SMART TOILET BIDET IN WHITE WITH AUTO OPEN, AUTO
CLOSE, AUTO FLUSH, HEATED SEAT, AND REMOTE
HOROW, MDL. #HR-0005
19" W X 26" D X 18 ½" H
WHITE
- ⑤ BUILT IN BENCH COMPLETELY SEALED
COVER WITH MOSAIC TILES ON SIDES
ONE TILE SLAB ON TOP
47 ¼" W X 15" D X 18" H
- ⑥ SHOWER HEADS
SHOWER FAUCET AND SHOWER SYSTEM WITH TWO IN ONE HANDHELD
VANFOXLE, MDL. #1913A3C-06Y8
10" W X 10" D X 1 3/4" H
MATTE BLACK
- ⑦ SHOWER DRAIN
NEODRAIN 32-INCH STAINLESS STEEL LINEAR SHOWER DRAIN WITH
TILE IN PATTERN SURFACE
NEODRAIN, MDL. #ZA3-32-TO2-MB
2 3/4" W X 2" D X 32" L
BLACK



THANK YOU

KAMILLE WRIGHT

INTERIOR DESIGN - ENSIGN COLLEGE