

*Nathalia Barcellos*

INTERIOR DESIGN PORTFOLIO





# Verde Commons

## CHURCH OFFICE BUILDING

The strategic use of natural light, open spatial planning, and biophilic elements such as greenery and natural materials enhances both the functionality and aesthetic value of the space. These features are proven to improve occupant well-being, foster collaboration, and elevate overall user experience.

### MATERIALS

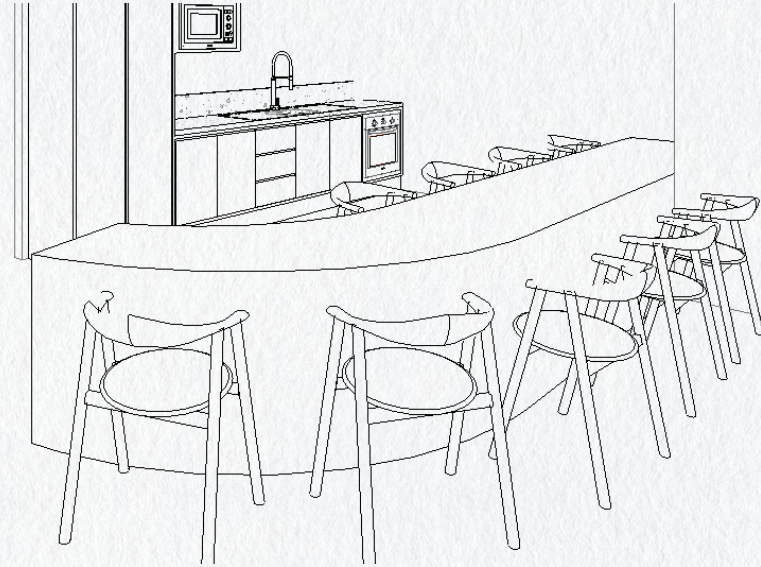
Wood  
Marble  
Ceramic Tiles

### DESIGN STYLE

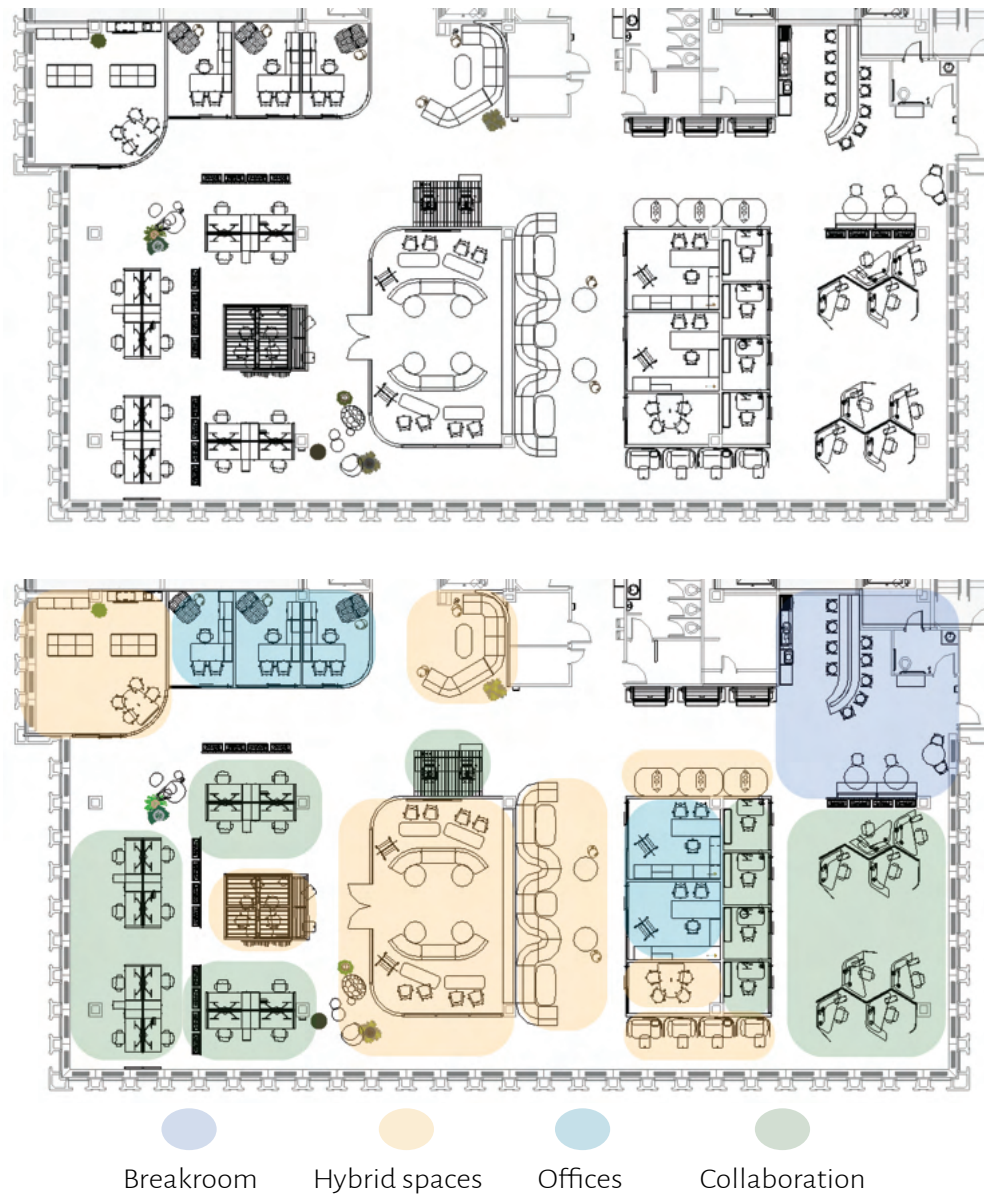
Modern contemporary  
Scandinavian

### KEYWORDS

Natural  
Wellness  
Collaboration







Co-working environments promote flexibility, allowing companies to accommodate hybrid work models and diverse employee needs. They foster collaboration and networking by breaking down silos, encouraging interaction across teams, and enhancing innovation. Additionally, co-working designs contribute to employee satisfaction and well-being by providing variety in work settings, boosting creativity, and supporting a strong sense of community.



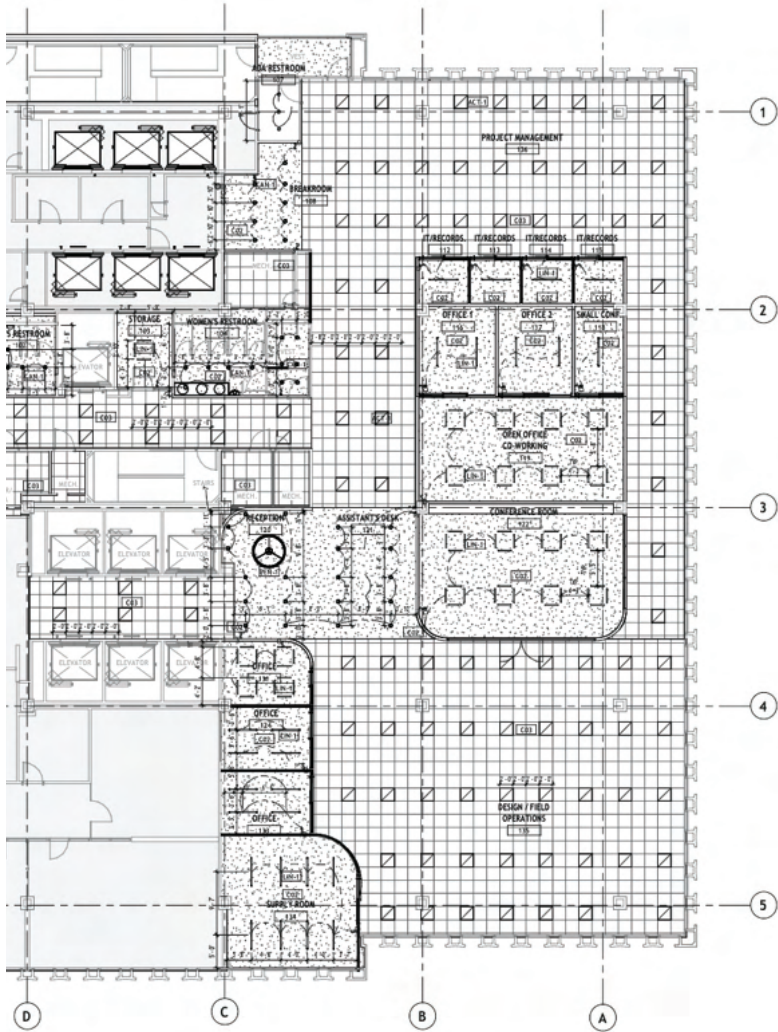
10,000 sf:  
3.9% Breakroom  
28.91% Hybrid Spaces  
6.9% Offices  
30% Collaboration







CEILING PLAN



CEILING LEGEND

	CO3 - 2 X 2 ACT
	CO2 - GWB ON METAL

LIGHTING NOTES:

- 1. GREYOUT AREA IS OUT OF SCOPE
- 2. THE CONFERENCE ROOM AND MEETING ROOM LIGHT FIXTURES HAVE THE SAME DIMENSION
- 3. THE LINEAR LIGHT FIXTURES ARE 4' LONG
- 4. COORDINATE ACT SYSTEM LAYOUTS AND SWITCHING WITH ELECTRICAL CONSULTANT
- 5. SAME LIGHTING LAYOUT IN ALL SMALL VIDEO CONFERENCE ROOMS
- 6. SAME LIGHTING LAYOUT IN OFFICES 1&2
- 7. COORDINATE DATA PRINTER LOCATIONS WITH ELECTRICAL CONSULTANT
- 8. COORDINATE LIGHTING DETAILS WITH INTERIOR DESIGNER

LIGHTING LEGEND

SYMBOL	TAG	DESCRIPTION
	ACT-1	RECESSED PARABOLIC LIGHT
	CAN1	RECESSED CAN LIGHT
	LIN1	LINEAR LIGHT FIXTURE
	PEN2	ROUND PEDANT LIGHT FIXTURE
	3WAY	THREE WAY SWITCH
	DIM	DIMMER SWITCH
	SING	SINGLE SWITCH
	GFCI	GFCI OUTLET

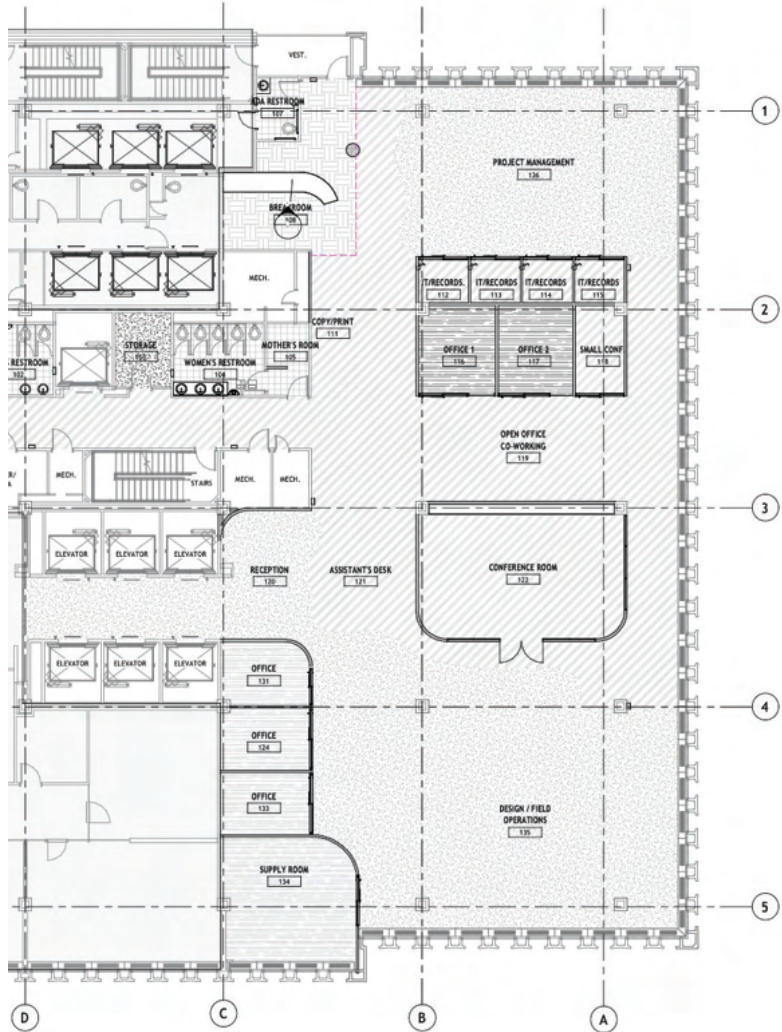


Ultra Lights  
Strata



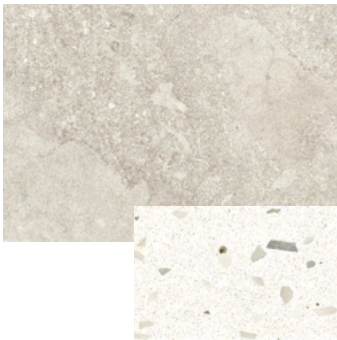
Batacalco  
Block

FLOOR FINISH PLAN



FLOOR FINISH LEGEND

SYMBOL	TAG	DESCRIPTION
	C-1	CARPET TILE
	C-2	CARPET TILE
	C-3	CARPET TILE
	T-1	TILE
	T-2	TILE
	TR-1	TRANSITION STRIP



Portobello  
Novian  
&  
Artisian



Farkott  
Open Path







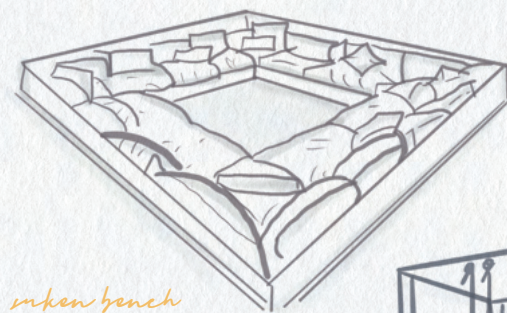




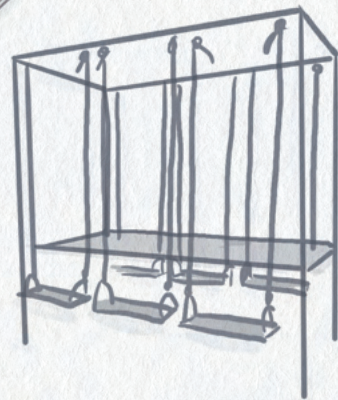
# Lantern Lounge

## CRUISE SHIP

The Moroccan style offers a dynamic and engaging aesthetic that resonates well with a teen audience, combining cultural richness with a sense of adventure. The use of bold patterns, layered textures, and vibrant color palettes creates a visually stimulating environment that encourages exploration and social interaction. A key design element is the Moroccan lantern, whose perforated metalwork produces a distinctive play of light and shadow. This atmospheric lighting not only enhances the spatial depth but also fosters an immersive environment, transforming the game space into a memorable and inviting setting that balances energy with comfort.



sunken bench



swing chair

## MATERIALS

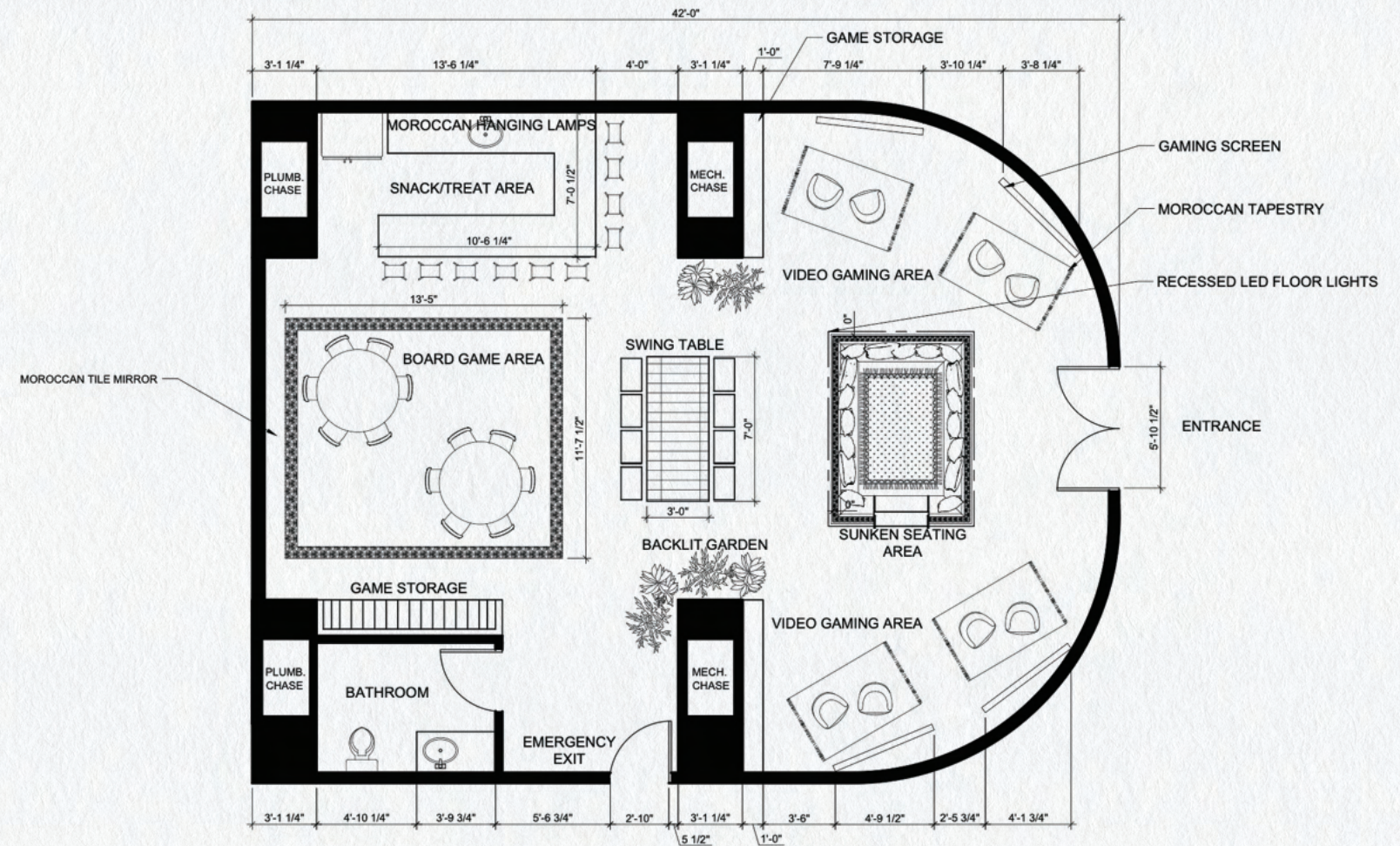
Textiles  
Ceramic Tiles  
Marble

## DESIGN STYLE

Moroccan  
Mediterranean

## KEYWORDS

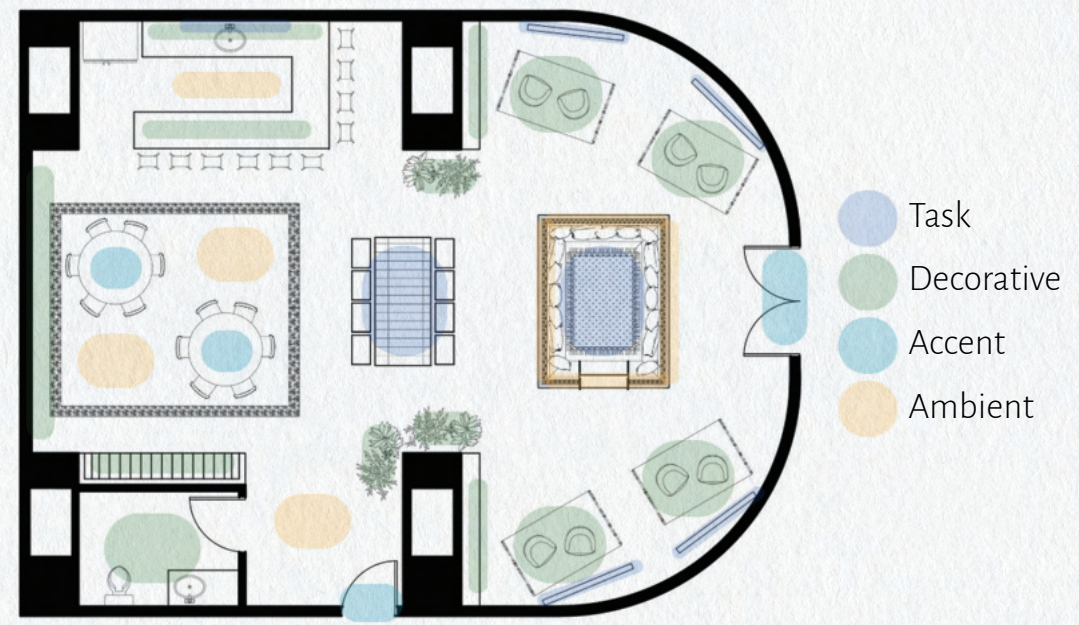
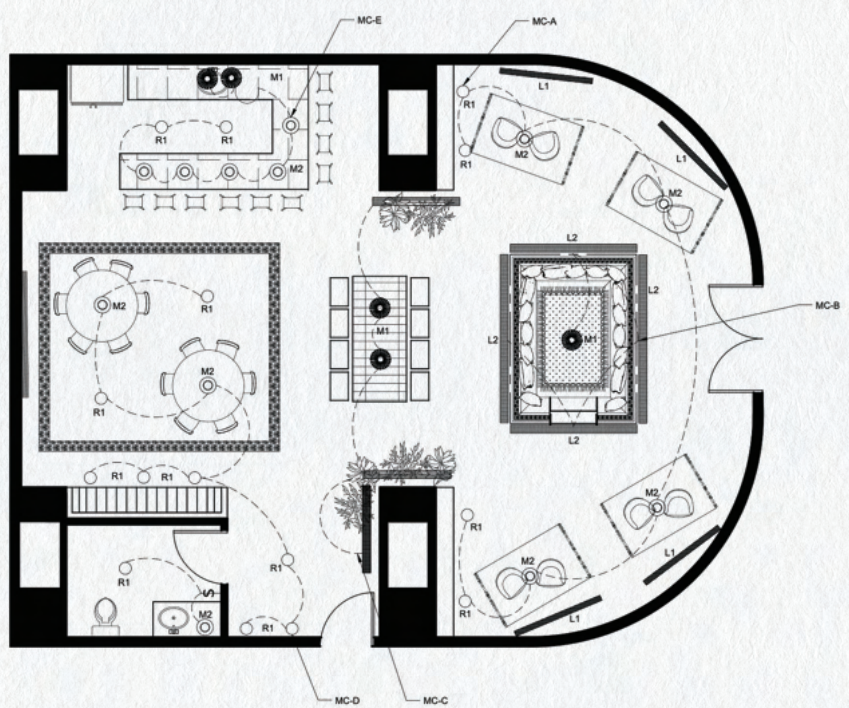
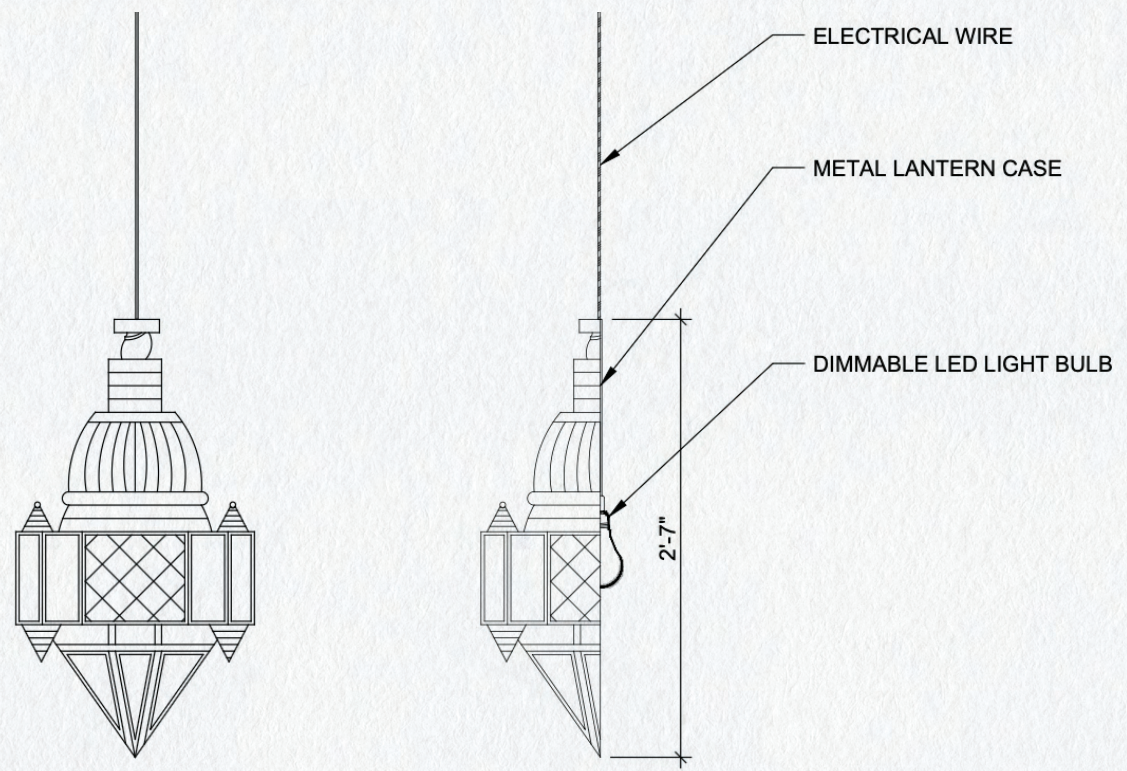
Lantern  
Games  
Teen



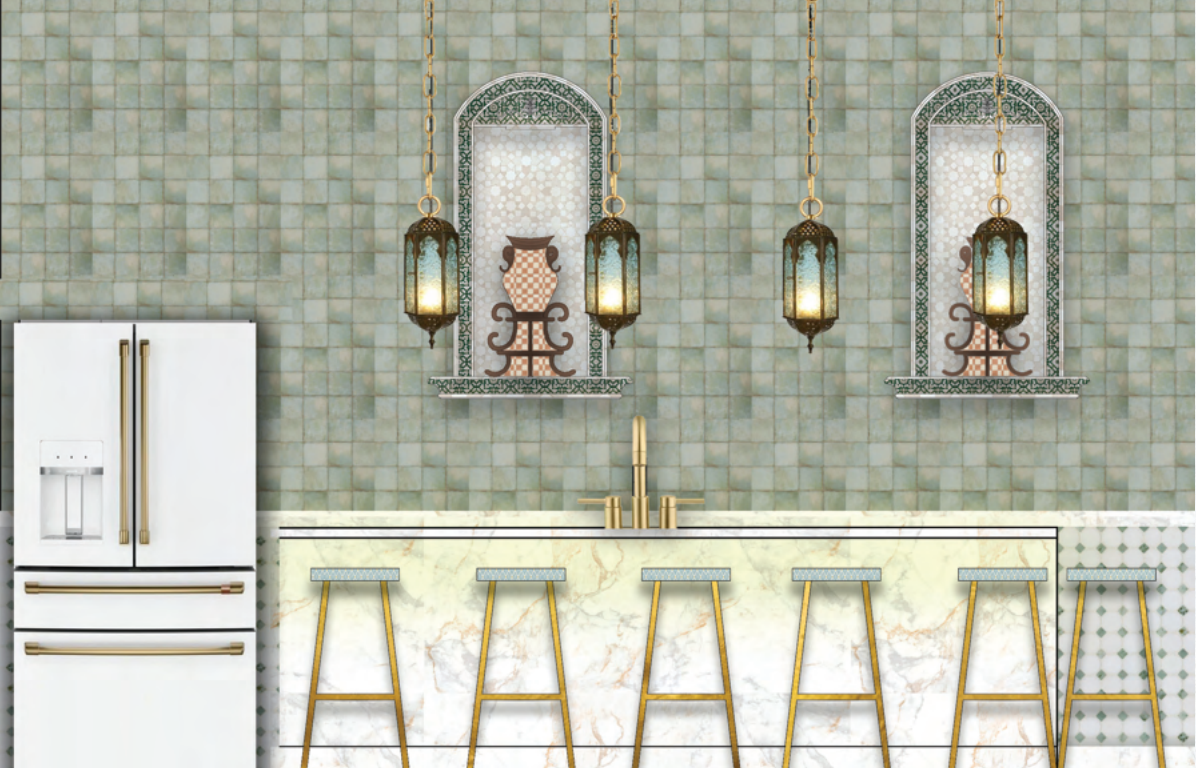
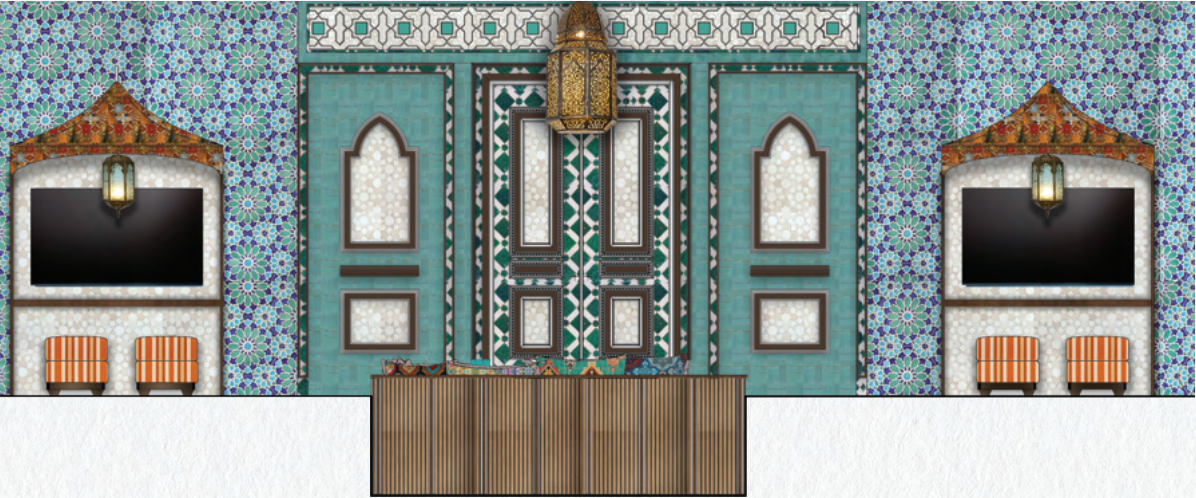














# Coliving Quarter

## BOUNTIFUL HOUSE REMODEL

This 1964 Bountiful home has strong potential due to its prime location and spacious layout but suffers from a dated interior and poor functionality. The remodel aims to modernize the space through strategic design, creating comfortable, private rooms and inviting shared areas ideal for students and professionals. By combining organic materials, modern style, and smart solutions, the redesign will elevate the

### MATERIALS

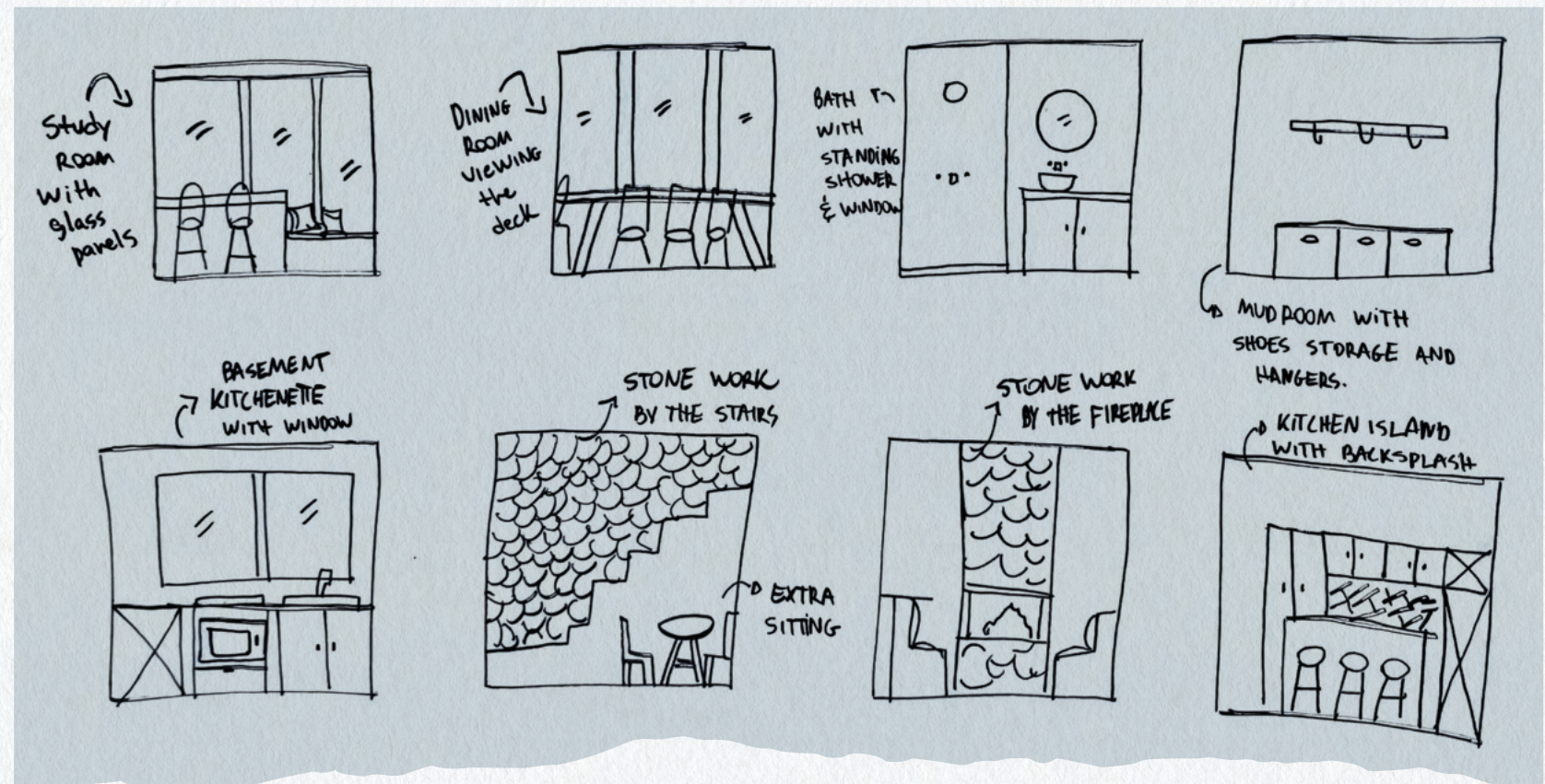
Glass  
Stone  
Tile

### DESIGN STYLE

Scandinavian  
Contemporary

### KEYWORDS

Privacy  
Comfort  
Modern





EXISTING PLAN

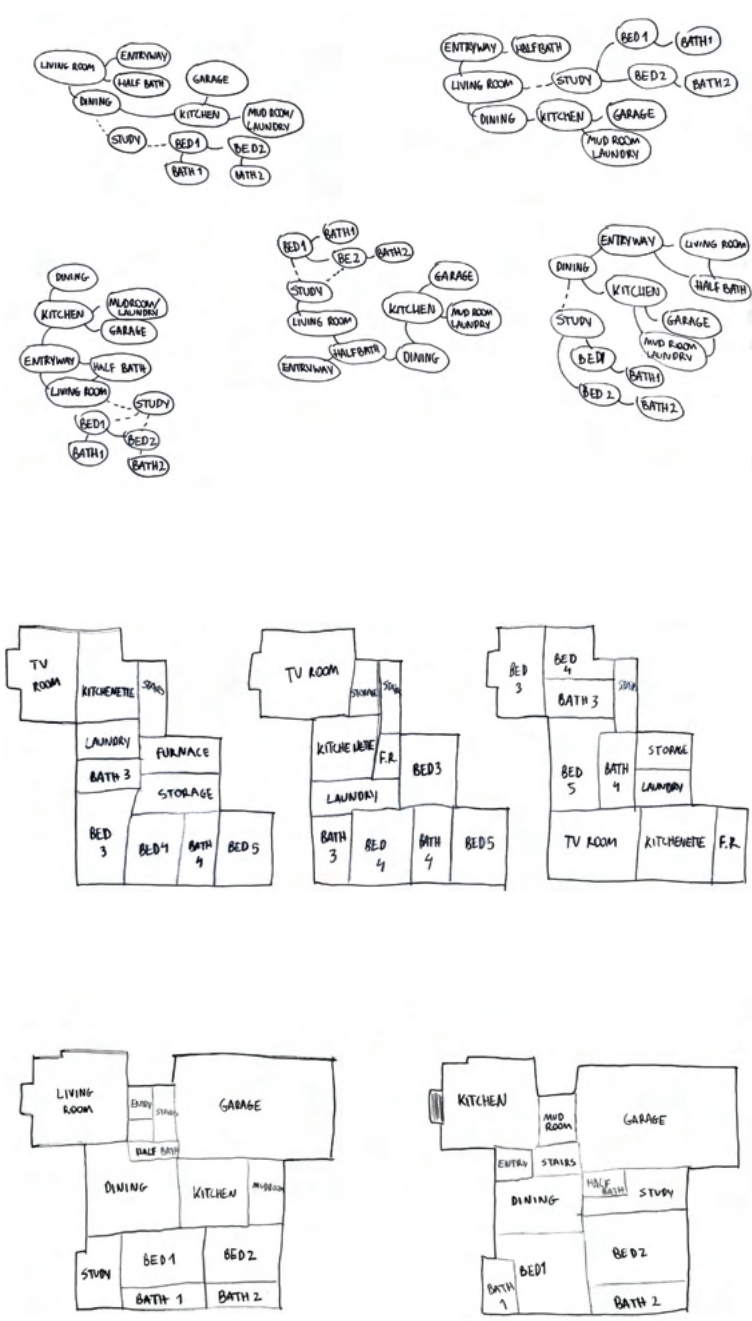
Main Floor



Basement



SCHEMATIC DESIGN



NEW PLAN

Main Floor



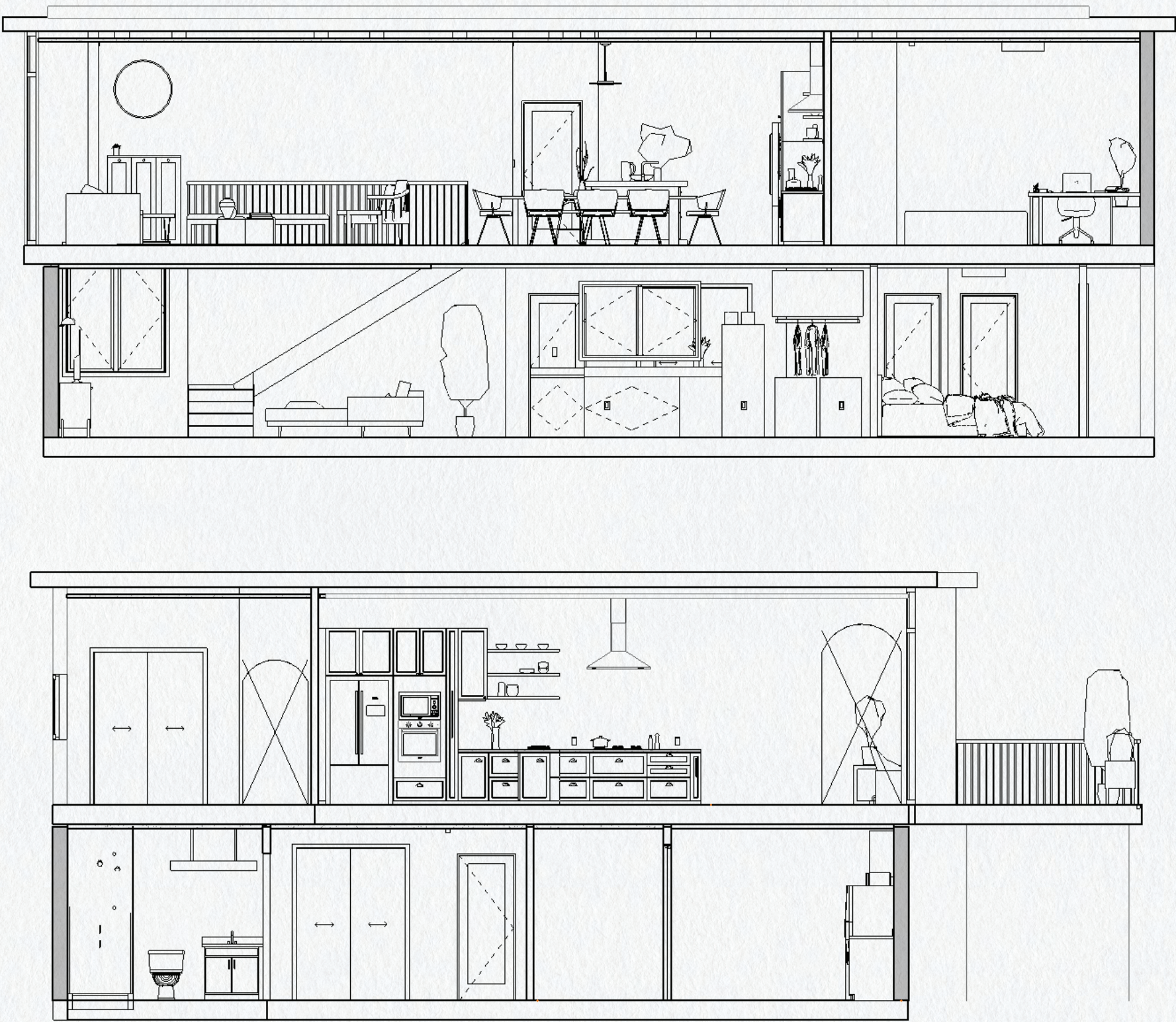
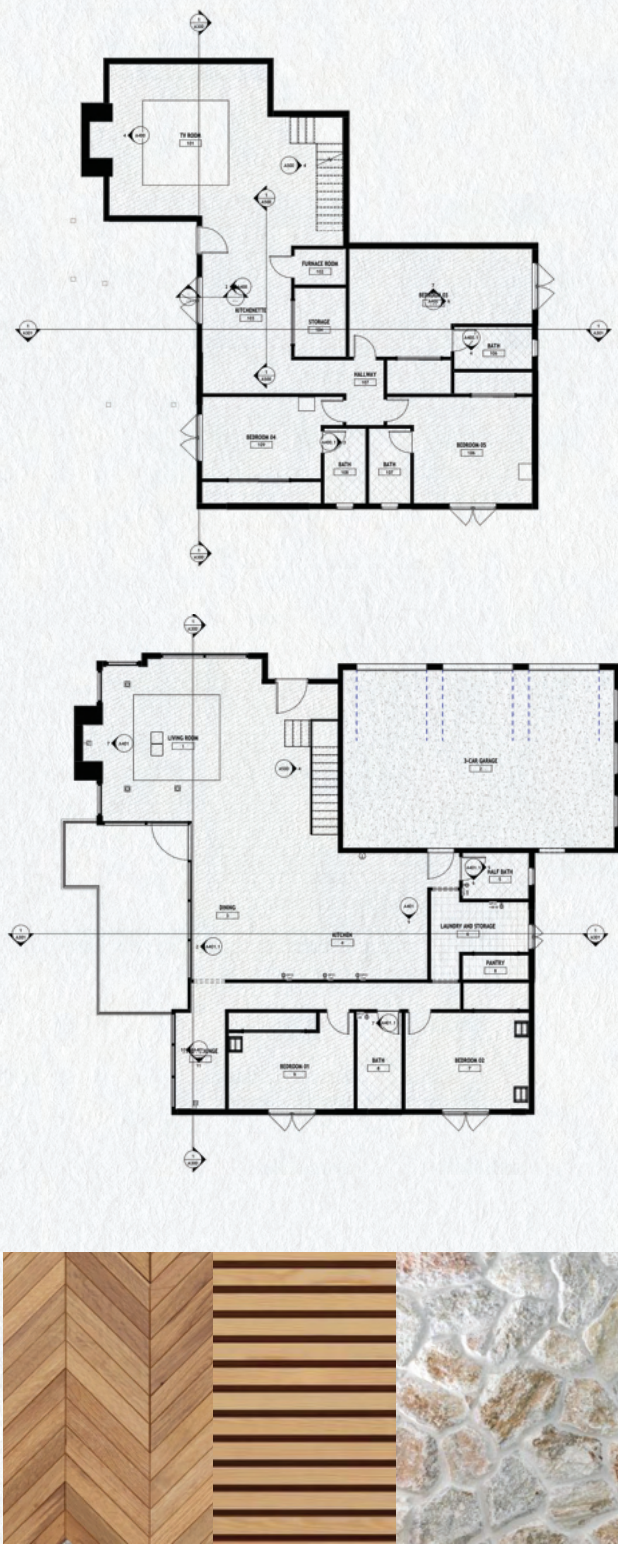
Basement













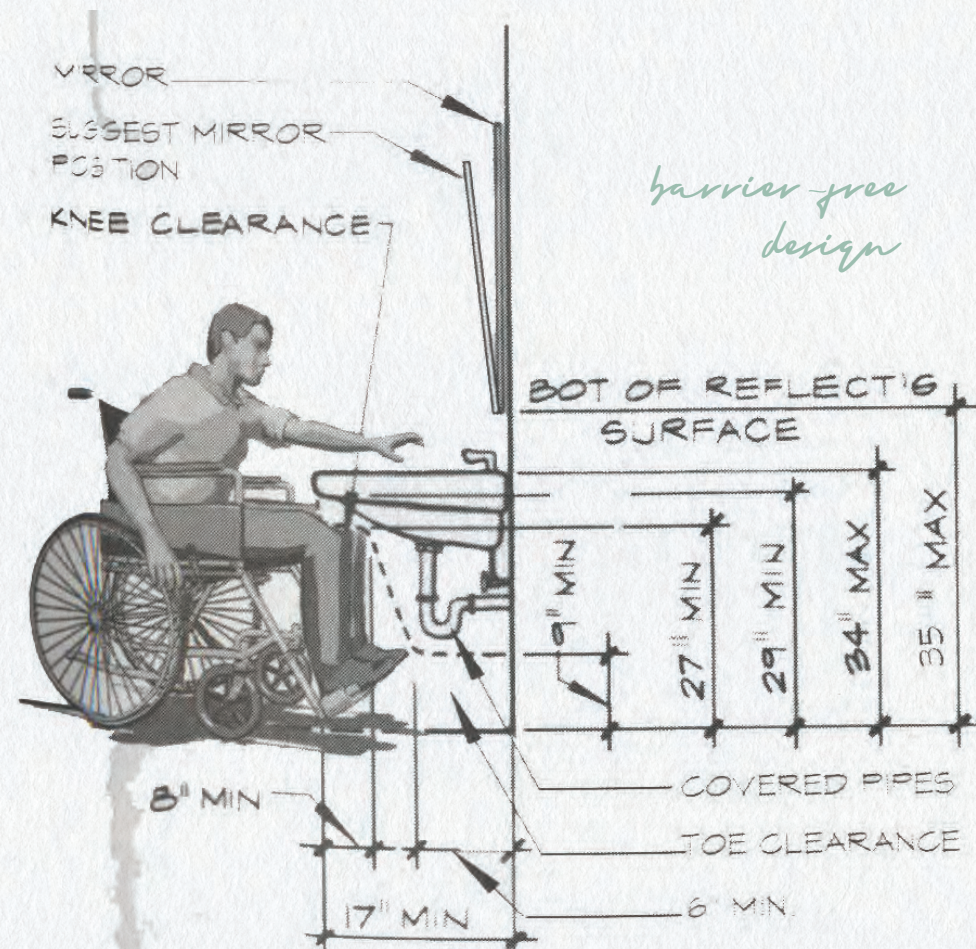








# Universal House



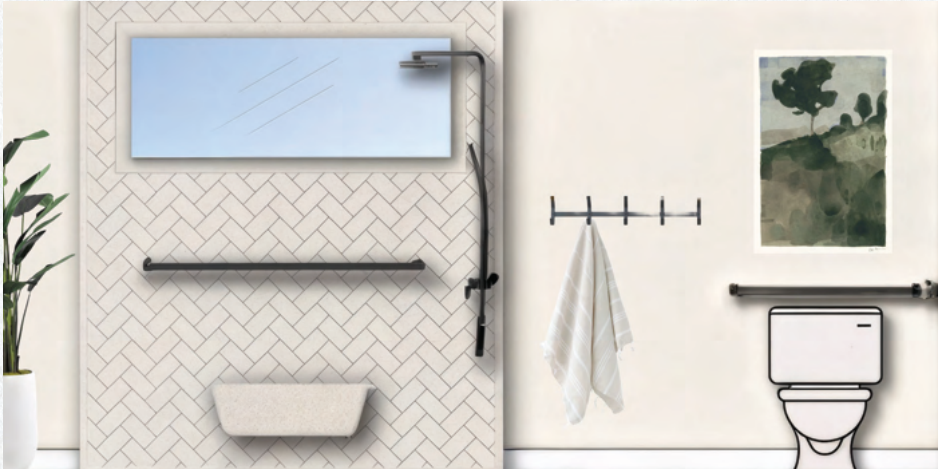
## Amaral's Residence

The Americans with Disabilities Act (ADA) Standards for Accessible Design, establishes the requirements that ensure buildings and facilities are usable by individuals with disabilities. These standards cover elements such as door widths, ramps, restrooms, signage, and clear floor spaces, promoting equal access and safety for everyone.

The Williams family, a household of four, envisions a warm, modern, and functional home that fosters togetherness while accommodating the specific accessibility needs of the mother, who uses a wheelchair. The goal of this remodel is to create an inclusive environment that promotes independence, comfort, and beauty, reflecting the family's active lifestyle and sense of connection.





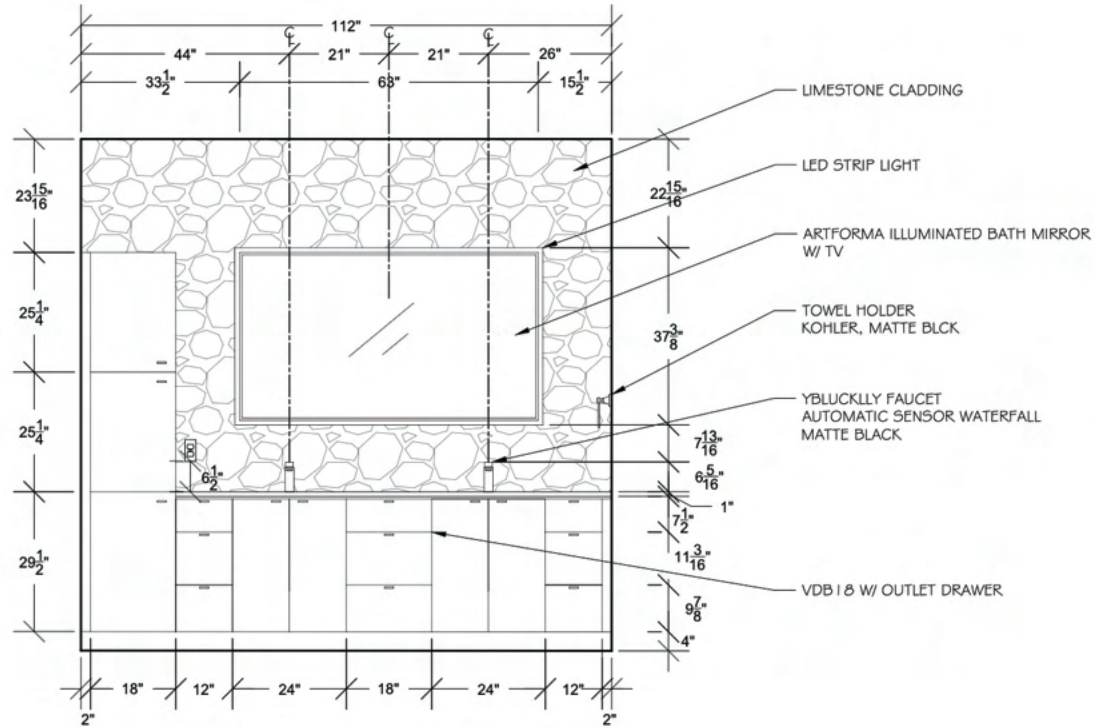
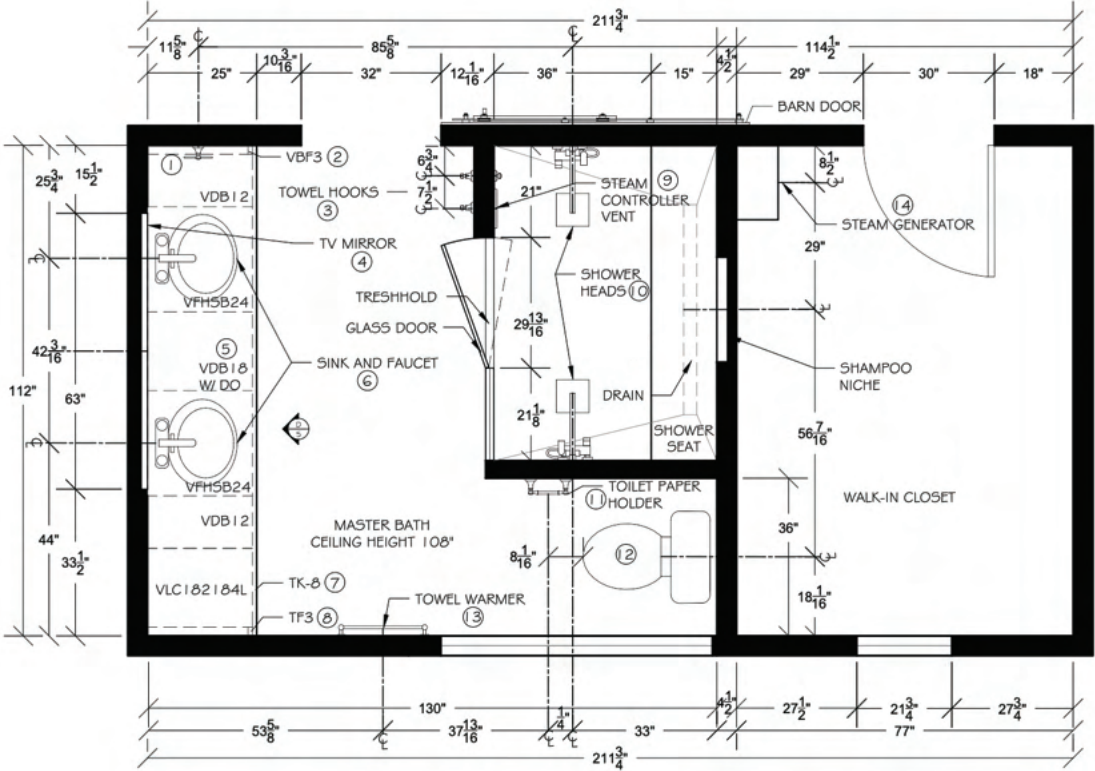




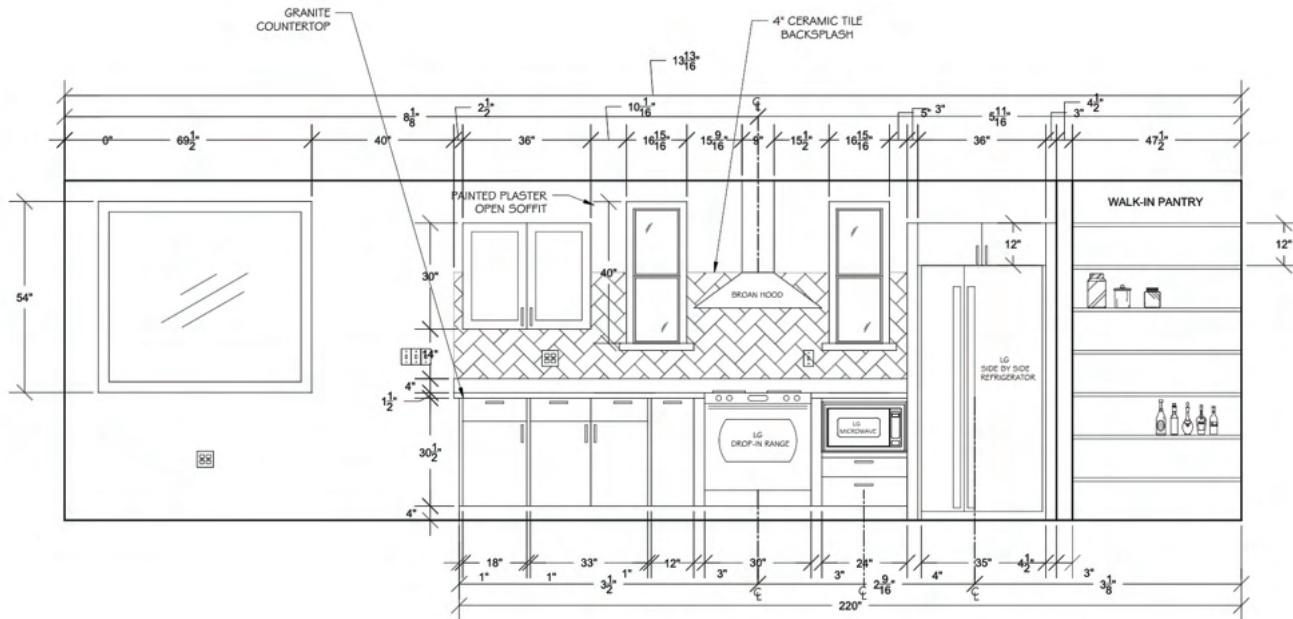
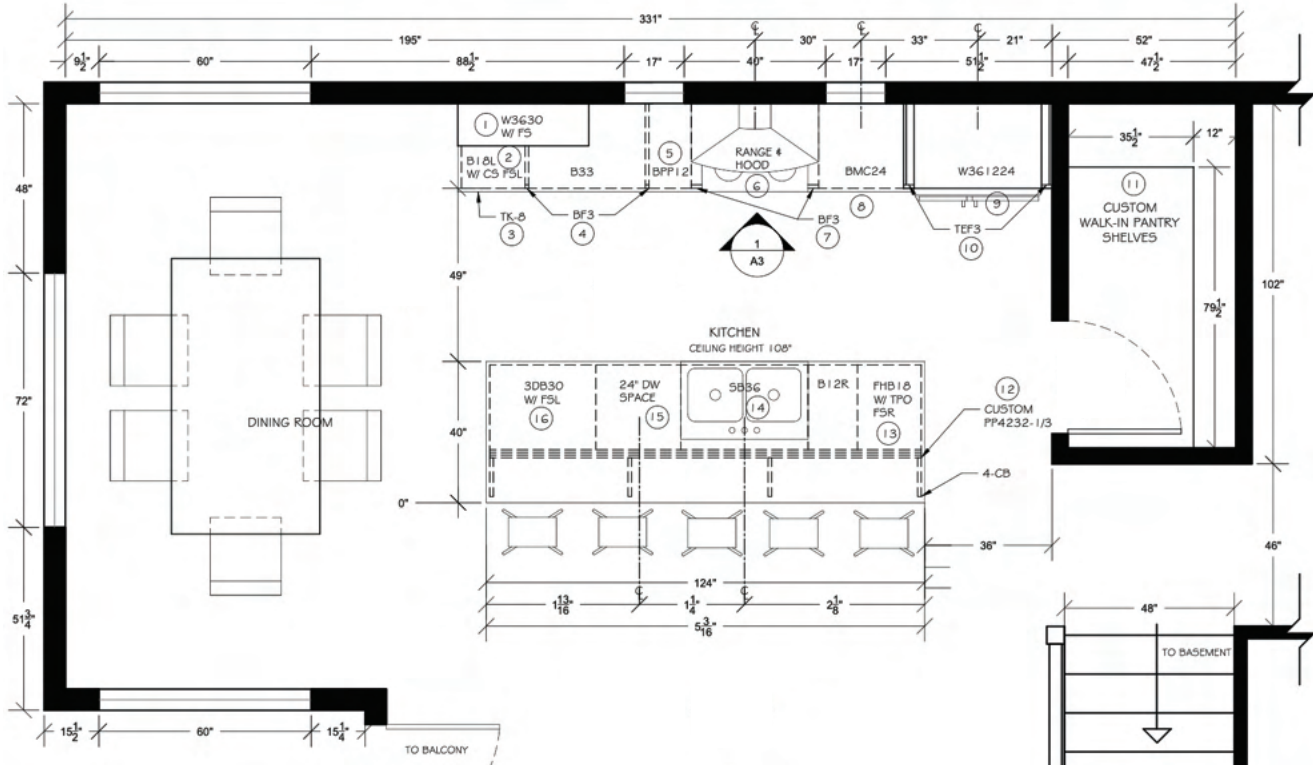
# The Orchards

## NKBA BATHROOM REMODEL

The National Kitchen & Bath Association (NKBA) guidelines serve as the industry standard for creating safe, functional, and efficient spaces. Following these principles, the clients requested a bathroom with a serene, spa-like atmosphere. The design features a steam shower, modern fixtures and appliances, and the use of natural materials to evoke warmth and tranquility while maintaining a clean, contemporary aesthetic.







# Golding Residence

## NKBA KITCHEN REMODEL

The National Kitchen & Bath Association (NKBA) guidelines serve as the industry standard for ensuring safety and efficiency in kitchen and bath design. Guided by these principles, the Golding Family requested an open, light-filled kitchen with a central island where everyone could gather, along with a functional and accessible pantry.

