

PORTFOLIO

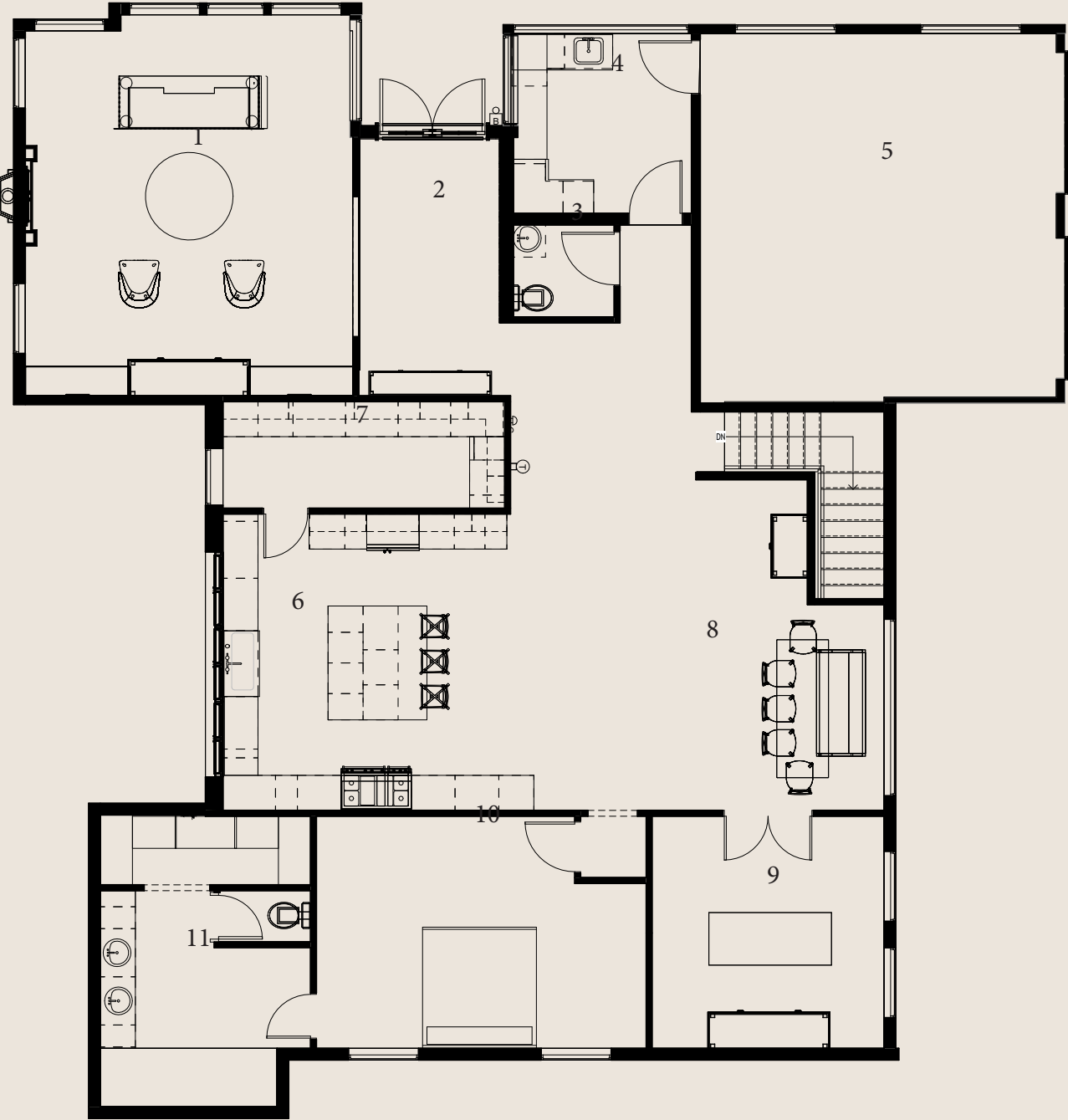


MADELYN DAW

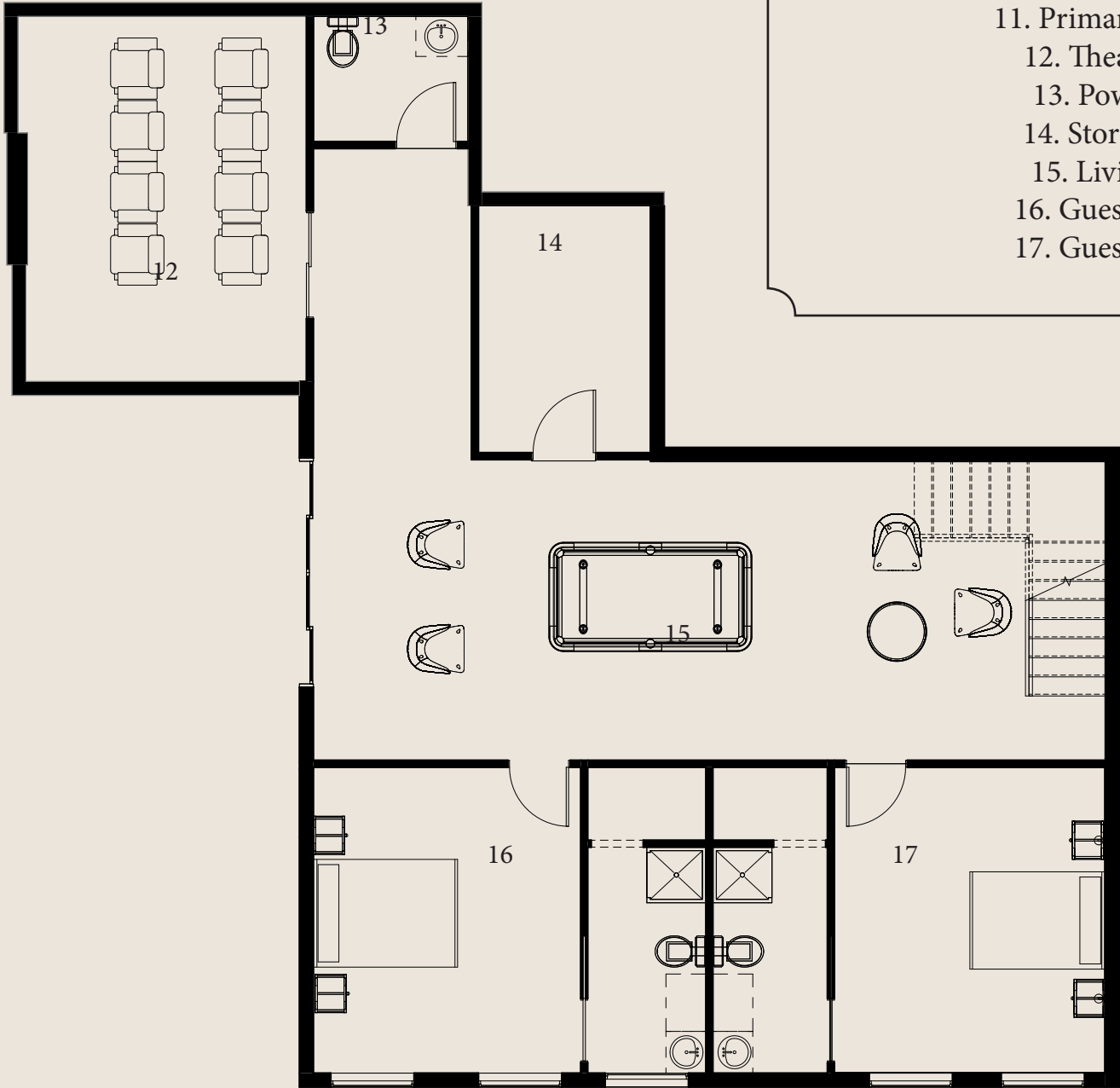


VINEYARD STREET REMODEL

MAIN LEVEL



BASEMENT LEVEL

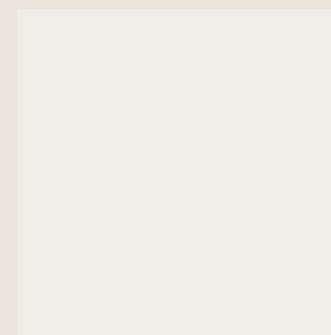


- 1. Living Room
- 2. Entry Way
- 3. Powder Bath
- 4. Laundry/Mudroom
- 5. Garage
- 6. Kitchen
- 7. Pantry
- 8. Dining Room
- 9. Office
- 10. Primary Suite
- 11. Primary Bathroom
- 12. Theater Room
- 13. Powder Bath
- 14. Storage/Mech.
- 15. Living Room
- 16. Guest Bedroom
- 17. Guest Bedroom



ENTRY WAY

This home draws from coastal traditional elegance with a flare of organic design. It was designed with the perfect balance of a closed-open floor plan, creating defined yet connected spaces that encourages effortless movement and conversation. Every detail was considered to make gathering and hosting feel both comfortable and refined- from the inviting kitchen that opens into the dining room, to the seamless flow that allows guests to feel at ease in every corner of the home.



LIVING ROOM

LIVING ROOM







KITCHEN





OFFICE

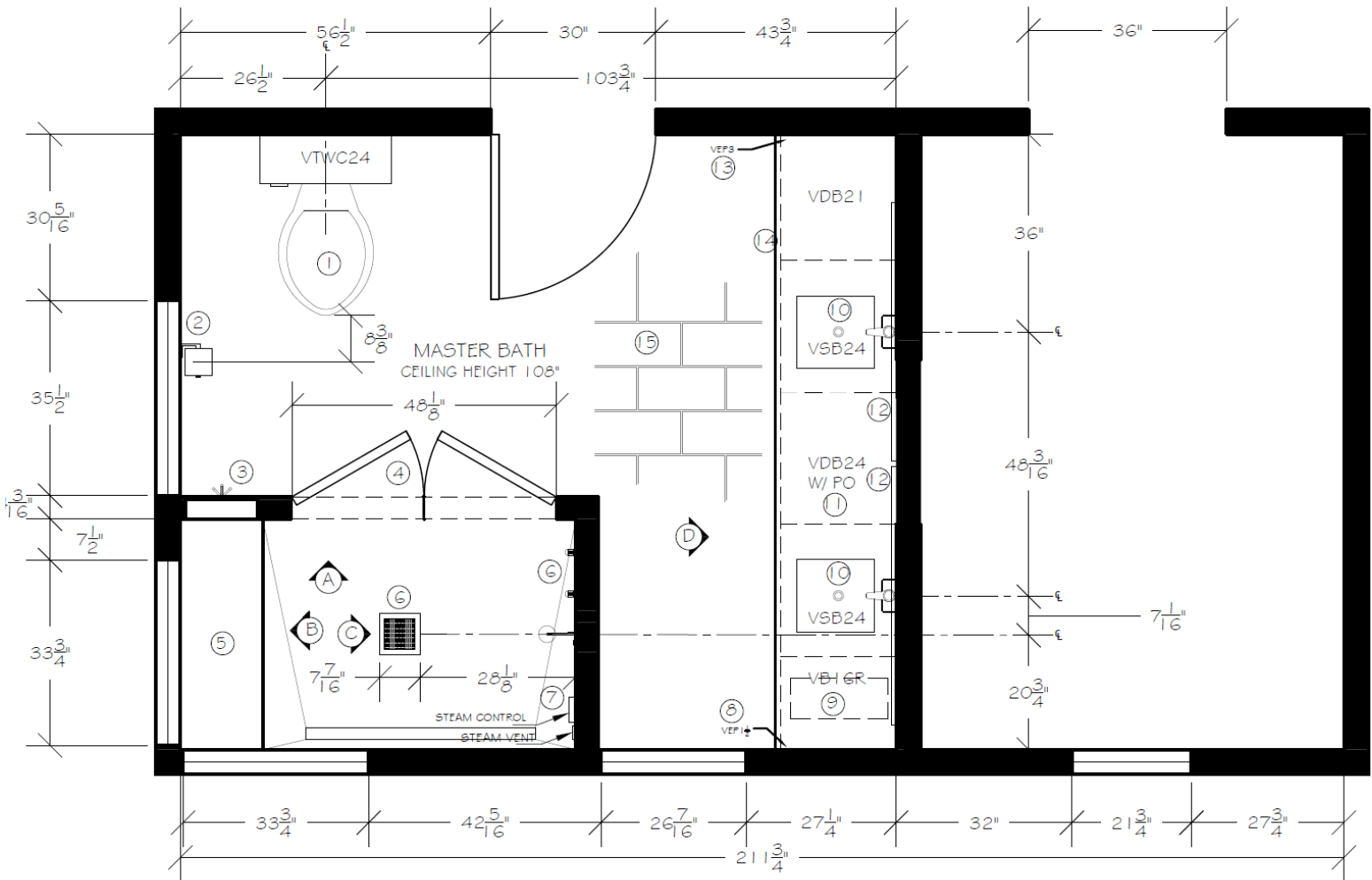




BEDROOM



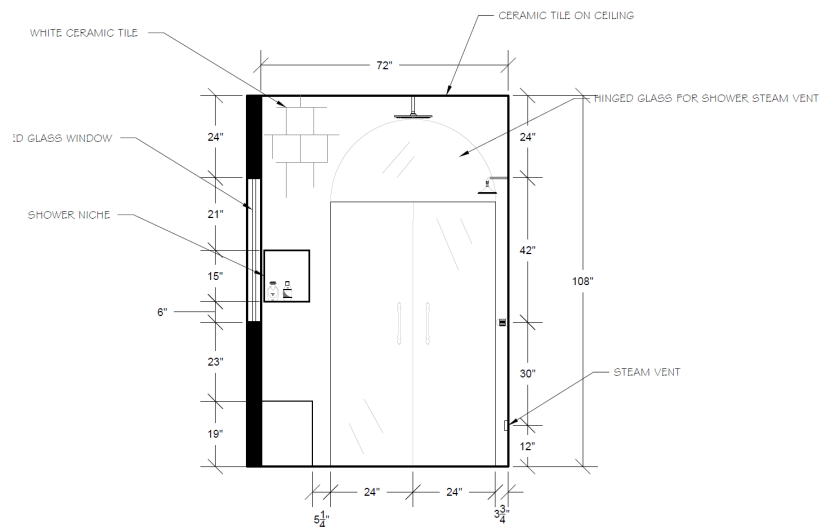
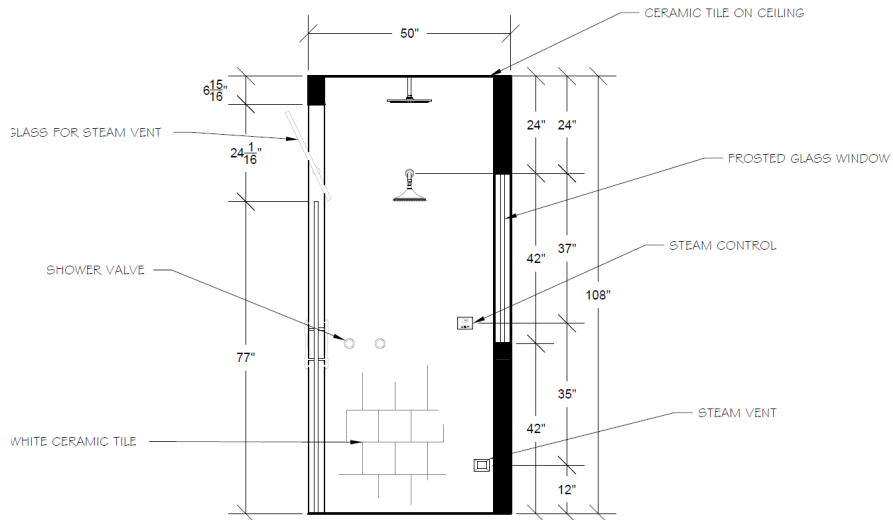
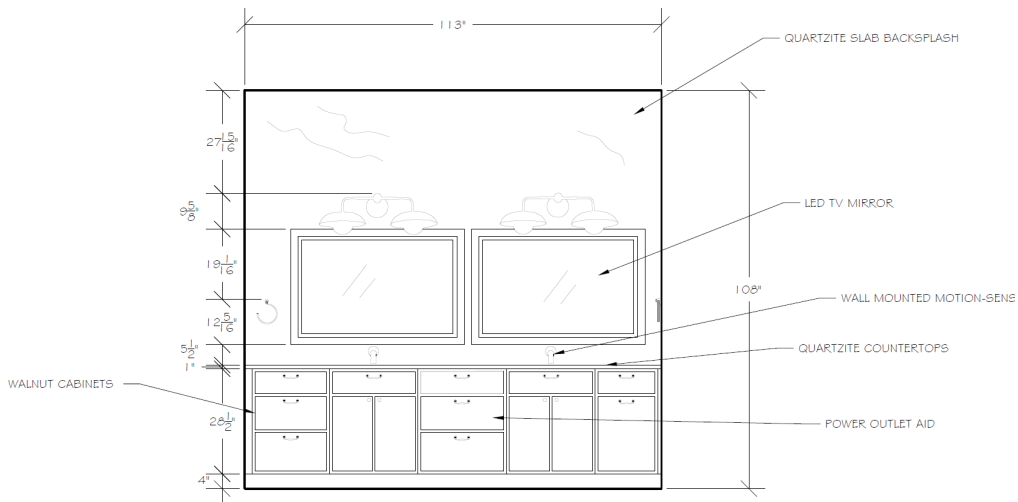
FLOOR PLAN SPECIFICATIONS



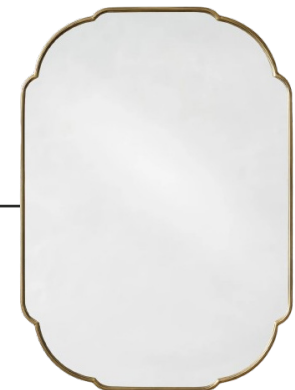
1 ORCHARD MASTER BATHROOM FLOOR PLAN

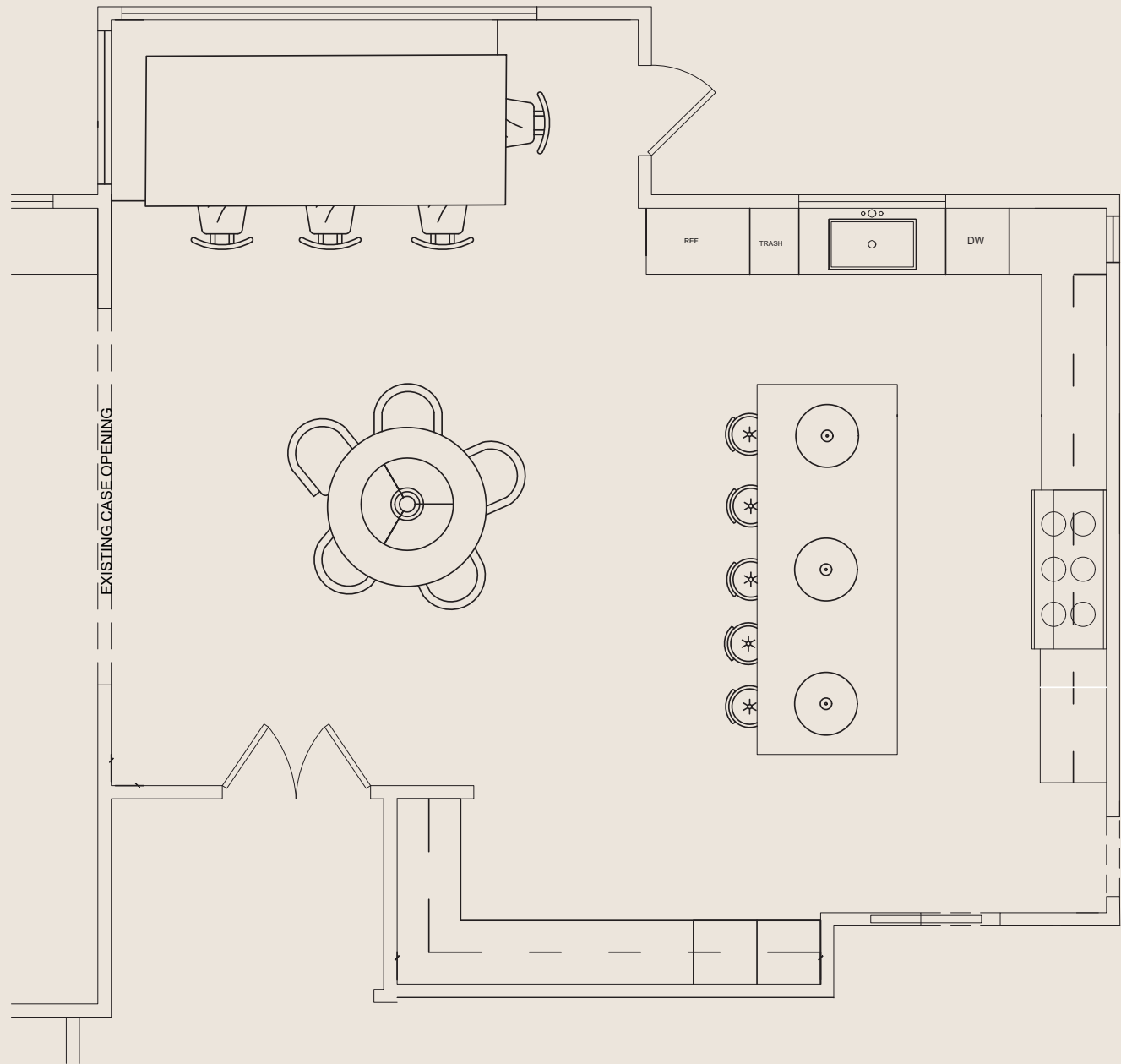


- 1 TOILET
KOHLER: K-5401-PA-0
17-1/4"W X 26-1/8"D X 21-1/2"H
WHITE W/ AUTOMATIC FLUSH & COMFORT HEIGHT
- 2 TOILET PAPER HOLDER +26" AFF
POTTERY BARN: 8707219
8.25" W X 3.75" D X 1.25" H
- 3 TOWEL HOOK +42" AFF
SIGNATURE HARDWARE: SH247514
3-1/4"W X 3"D X 4-1/2"H
- 4 CUSTOM ARCHED SHOWER DOORS
GLASS BY SAWYER GLASS CO.
TEMPERED GLASS
VENT ABOVE DOORS
- 5 SHOWER BENCH
42"W X 15"D X 19"H
W/ WATERPROOF SEAL ON ALL EDGES
- 6 SHOWER WALLS REINFORCED FOR GRAB BARS W/ WATERPROOF MATERIAL FLOOR TO CEILING
SHOWER HEAD COMBO +84" AFF
SIGNATURE HARDWARE: SIG476275
8"W X 8"D X 60"H
BRUSHED GOLD
SHOWER VALVE
SIGNATURE HARDWARE: 948973
4-3/8" W X 5-1/2" D X 4-7/8"H
BRUSHED GOLD
COMBINATION PRESSURE - 42" AFF
W/ HIGH LIMIT STOP OVER 120° F
- 7 STEAM CONTROL +47" AFF
ELITESTEAM:5P-EST12-PR
3 3/4" W X 1 3/8" D X 3"H
STEAM VENT +12" AFF
ELITESTEAM:5P-EST12
3 3/4" W X 1"D X 3"H
W/ SILICONE COVER
- 8 VEP1 1/2"
CUT TO APPROX. 1"
- 9 VB1GR
CUSTOM VANITY CABINET WIDTH OF 16", HEIGHT OF 32 1/2", DEPTH OF 21"
- 10 STEAM GENERATOR
ELITE STEAM: 5P-EST12
7 1/2" W X 17 3/4" D X 15 1/2" H
- 11 WALL MOUNTED AUTOMATIC SENSOR FAUCET
MAC FAUCETS: FA43-129
2.75"W X 10.25"D X 2.75"H
MOUNT AT 36" AFF
POLISHED GOLD
- 12 CUSTOM QUARTZITE COUNTERTOPS
W/ 2 INTEGRATED LAVATORIES AND ROUNDED CORNERS
- 13 VDB24 W/ POWER OUTLET
KITCHEN SOURCE: BLADE DUO
1514-266
23 1/2" W X 24"D X 5"H
- 14 SMART LED BUILT-IN TV
SMART LIVING & TECHNOLOGY
47"W X 0.78"D X 31.4"H
MOUNTED AT 42" AFF
QT:2
- 15 VEP3
CUT TO APPROX. 2"
- 16 PLYWOOD TOEKICK
2 PCS, TPK-8
- 17 ANTI-SLIP FLOORING TILE
TILEBAR: SEVILLE EFESO GRAY
12x24 TRAVERTINE LOOK MATTE PORCELAIN TILE
12"W X 9MM D X 24"H
NATURAL

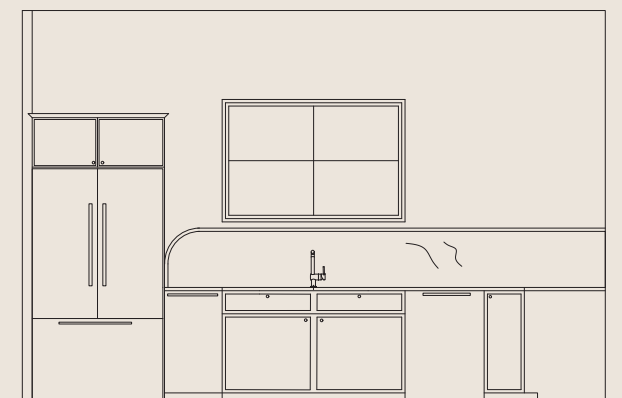
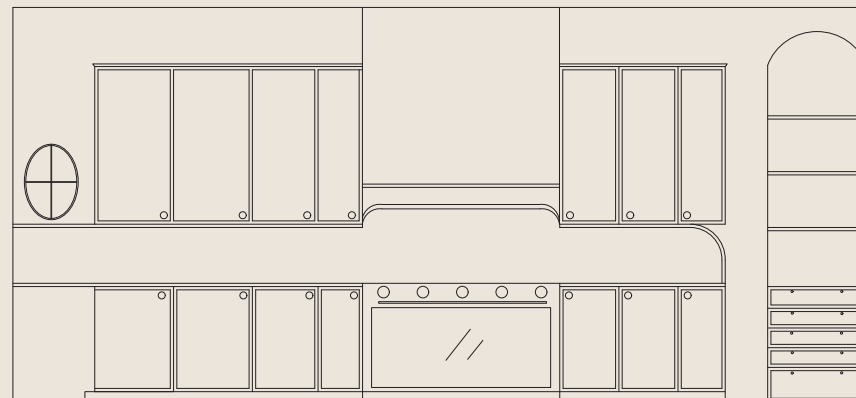
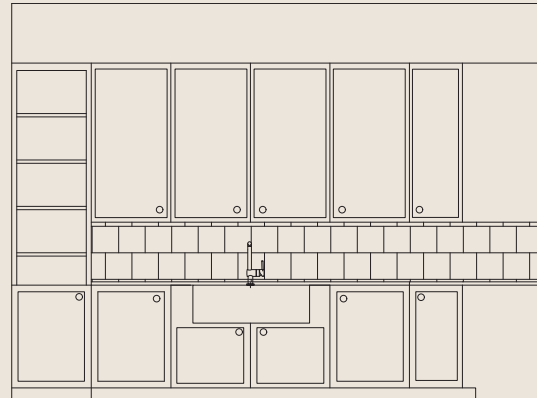
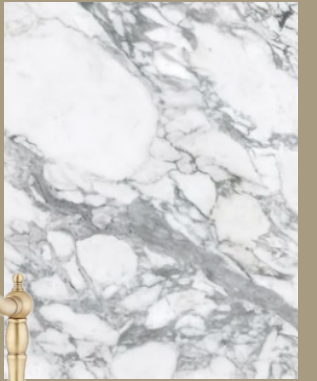


ORCHARD BATHROOM REMODEL



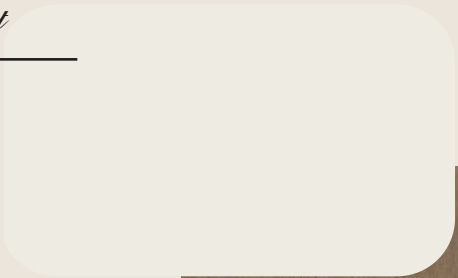


GOLDING KITCHEN REMODEL



MATERIAL BOARD

paint



wood



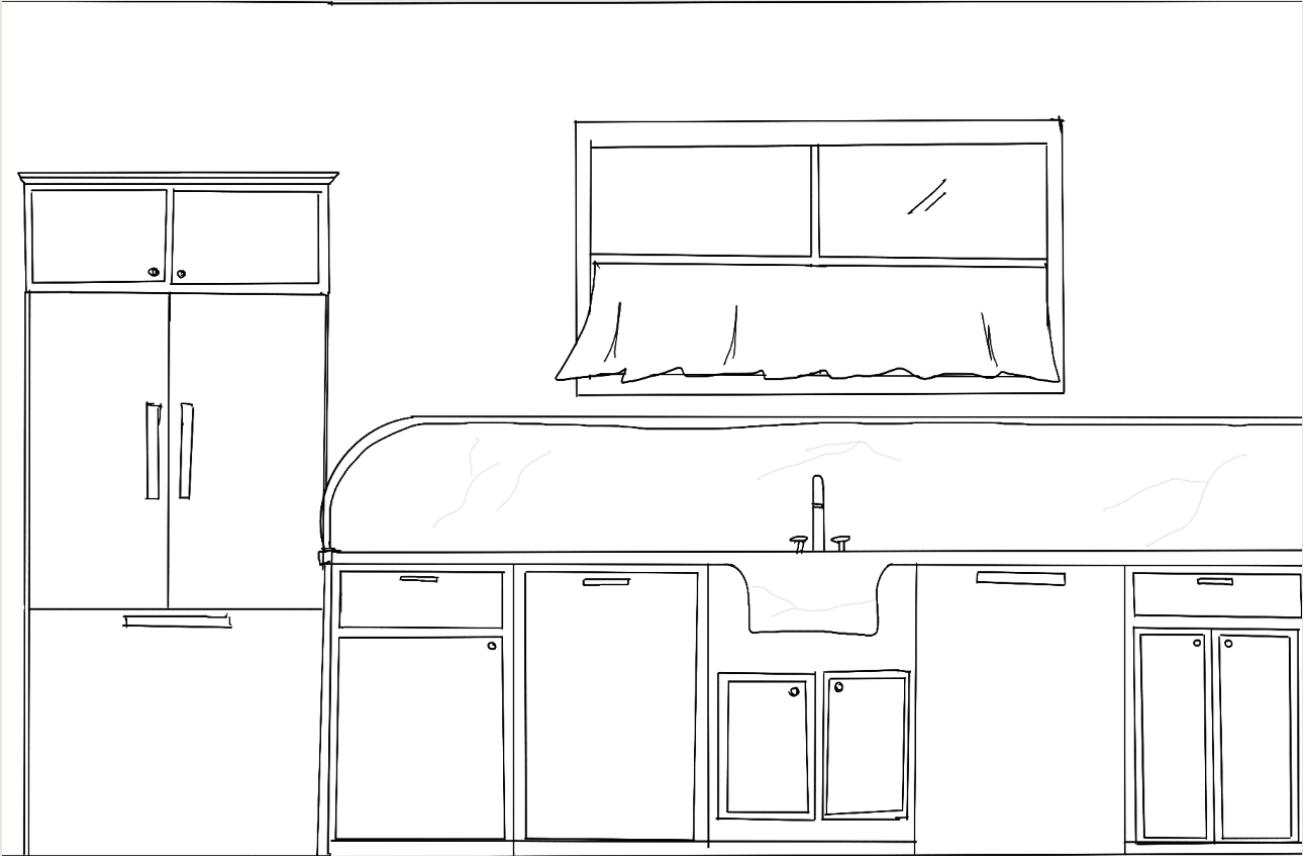
countertop



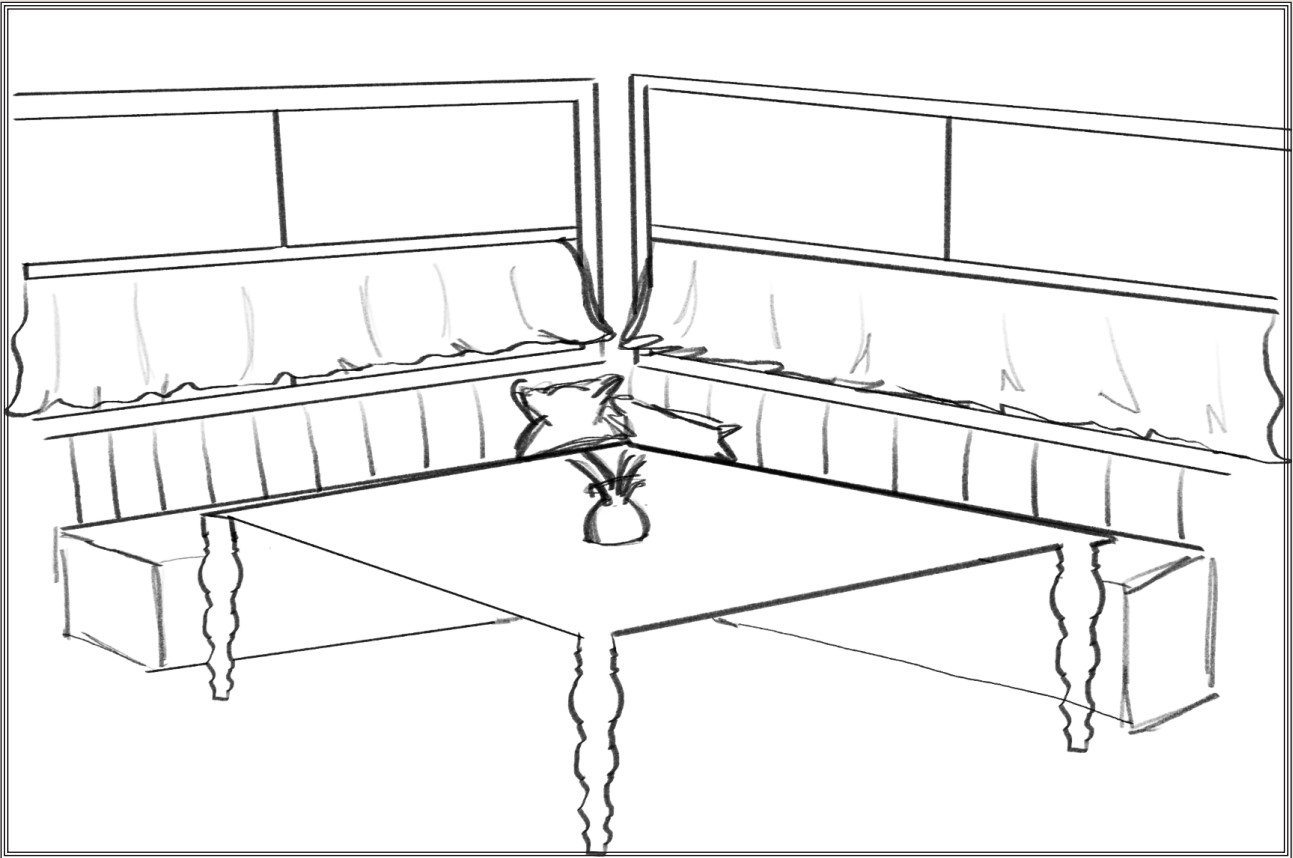
curtains

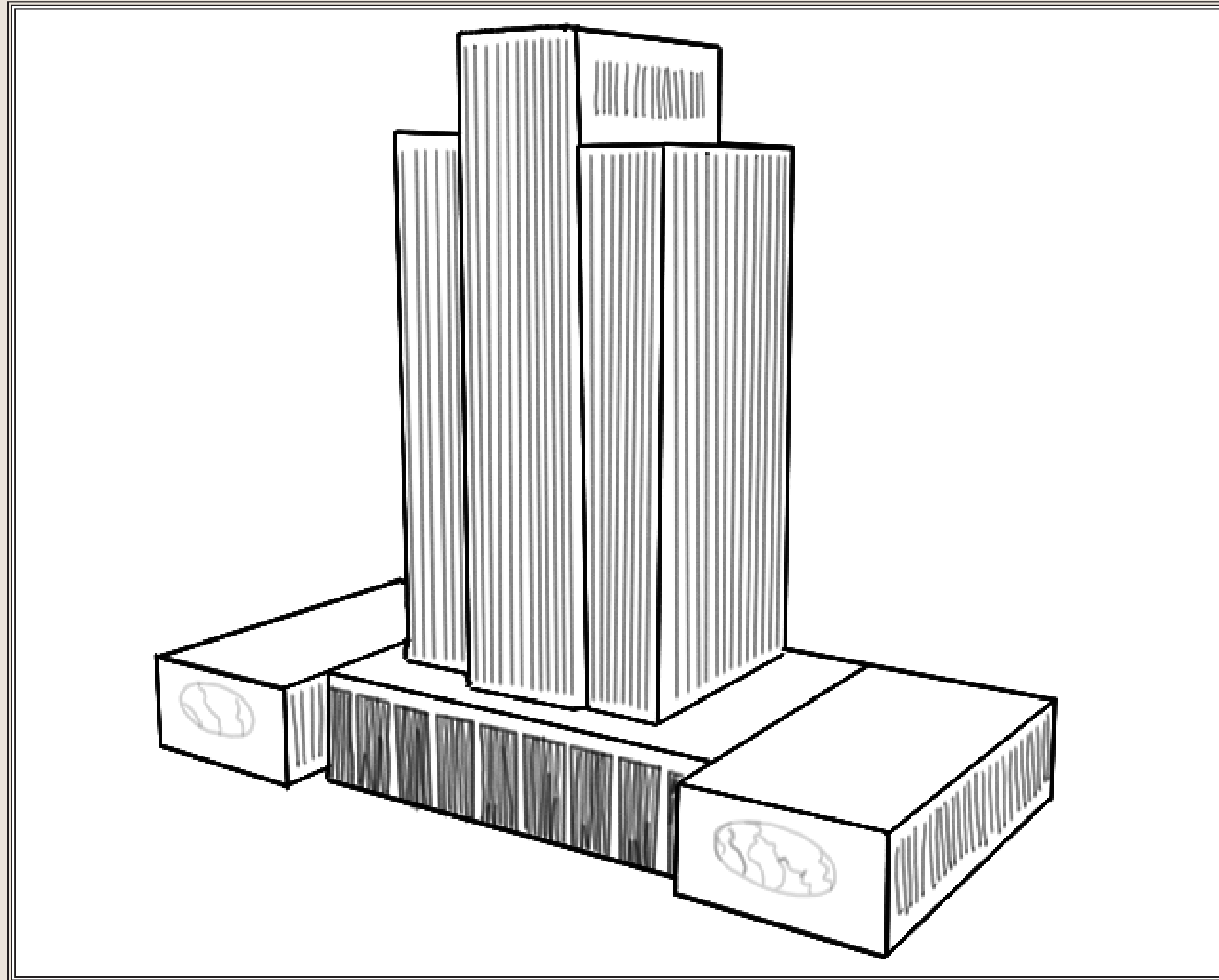


hardware



BREAKFAST NOOK

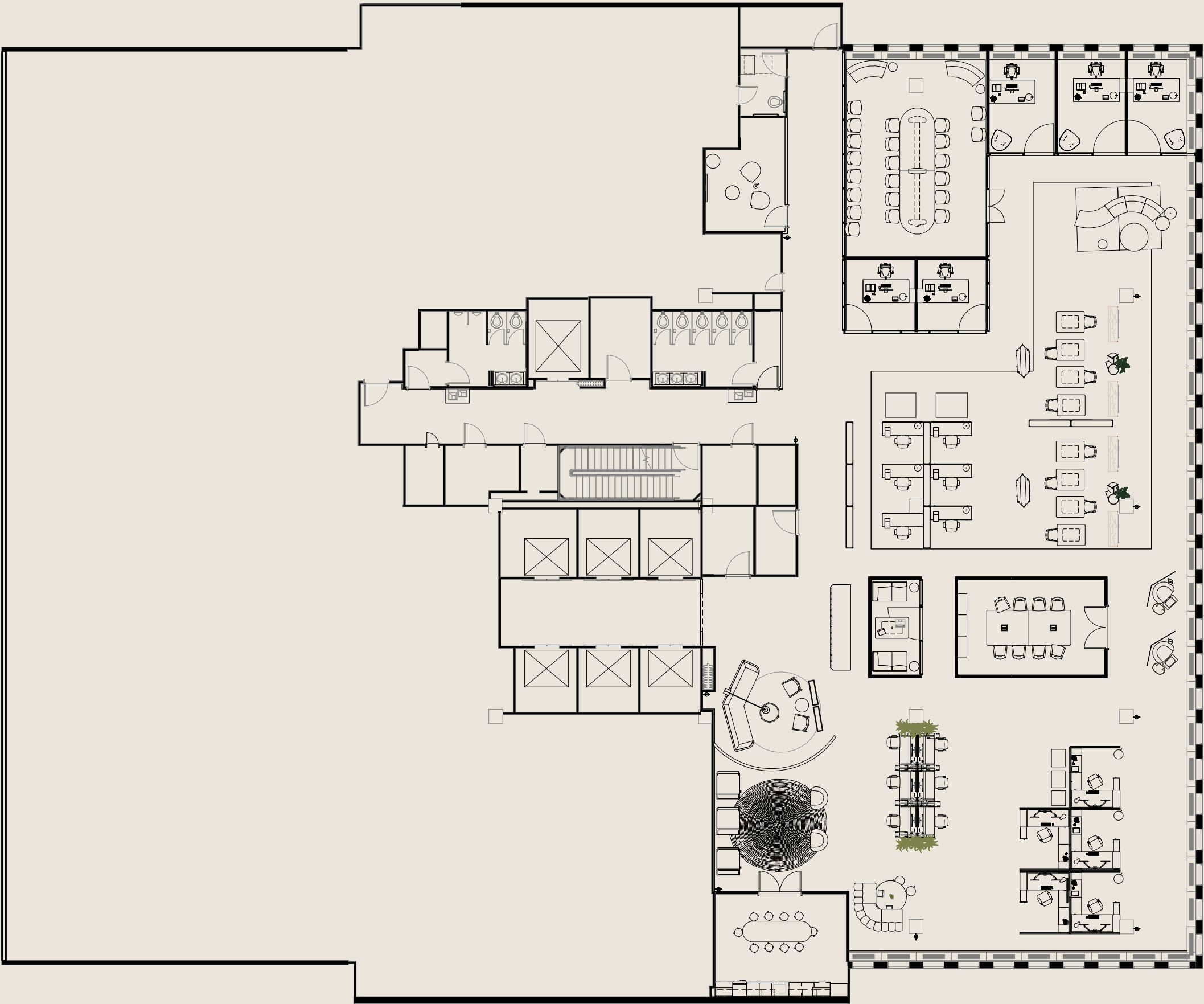




CHURCH OFFICE BUILDING

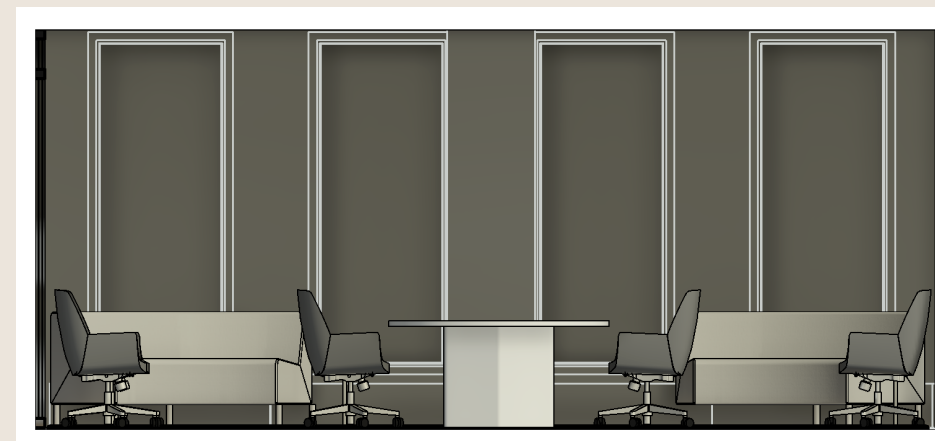


FLOOR PLAN





CONFERENCE ROOM





LOUNGE AREA





SEATING AREA

This commercial office was thoughtfully designed to balance flexibility, comfort, and focus. The layout features adaptable seating arrangements that supports both individual work and team collaboration, allowing the space to evolve with the needs of its users. A calming color palette and natural materials create an inviting atmosphere that promotes creativity and well-being, while intentional zoning ensures every area supports productivity and connection.

THANK YOU