

PORT FOLIO

ASHLEY RASBAND CHURCH

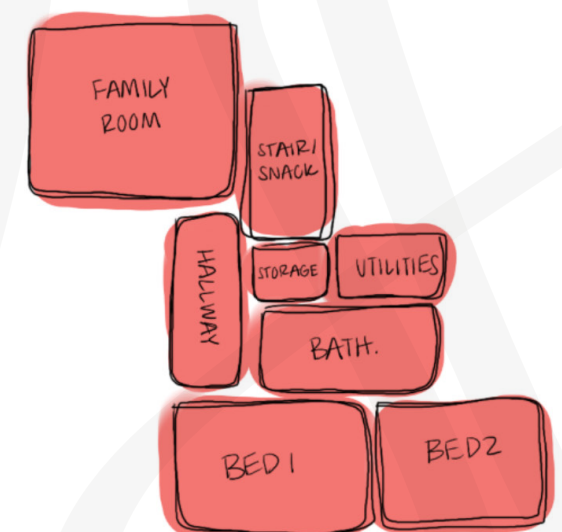
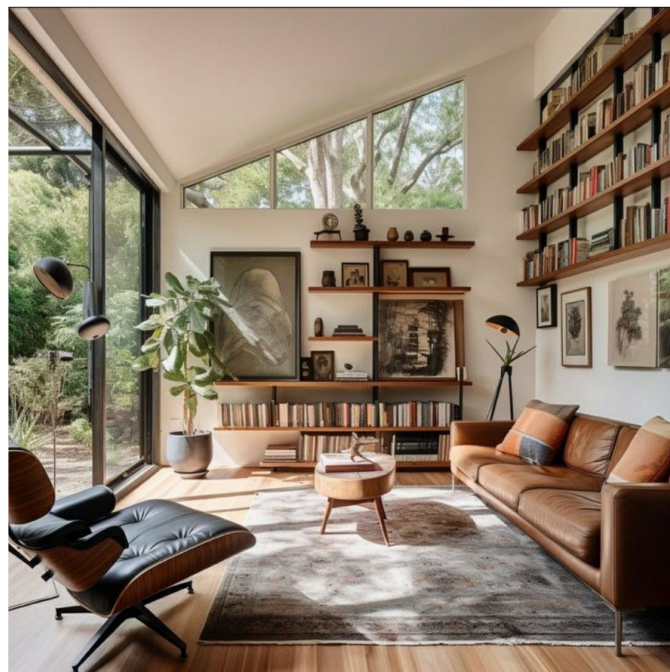
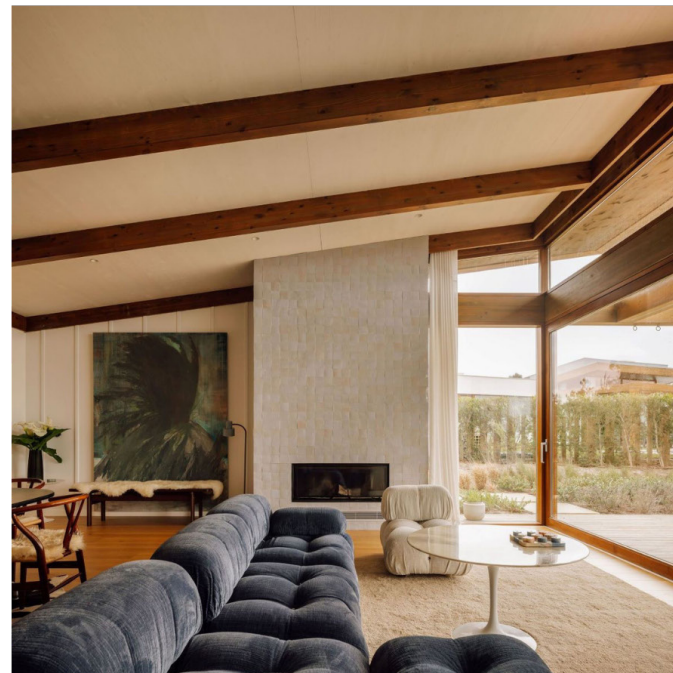


01 CHIESA PROJECT



The design intends to create a functional home that this newlywed couple can grow into over the years. The main floor will include hosting spaces and the master bedroom. The basement will have cozy spaces for the family and two bedrooms. The home will have different design influences including modern, mid-century, and eclectic to highlight the couple's love of travel.

The roughly 4000 sqft. home is designed for comfort and style, with a spacious main floor perfect for hosting guests. The master bedroom suite is conveniently located on the main floor, while the basement is arranged to have family spaces full of bright natural light. There's plenty of storage throughout, and the design reflects the couple's unique personalities.



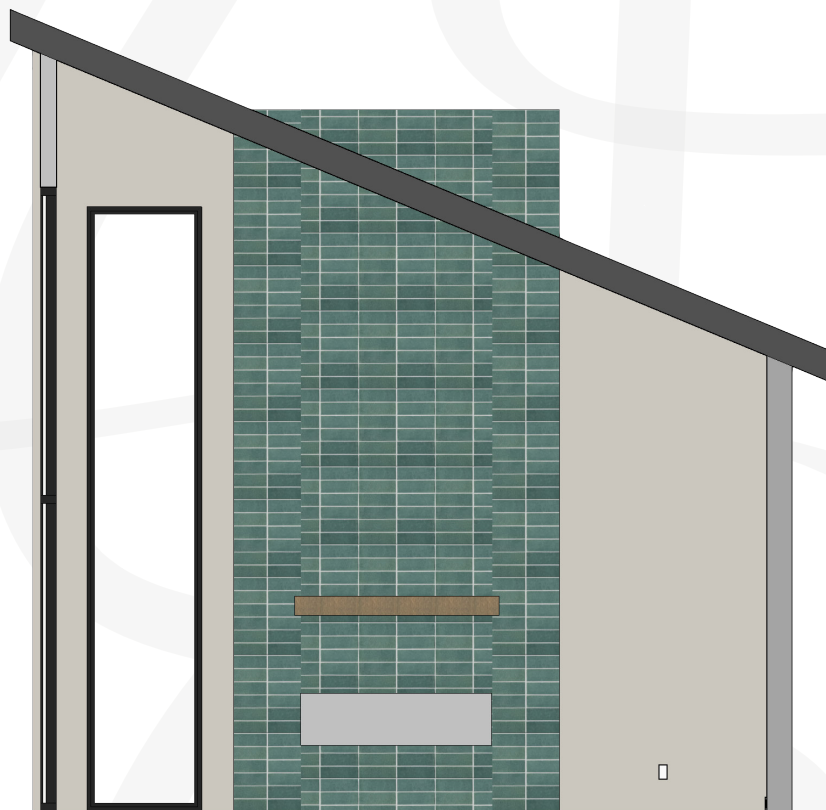


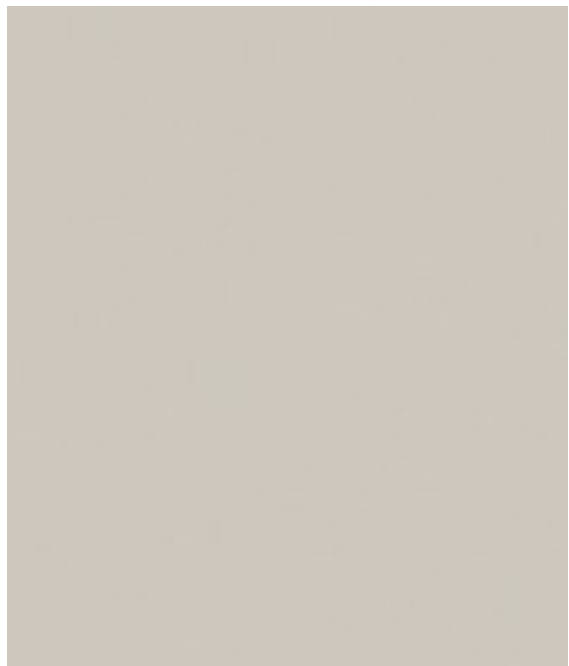
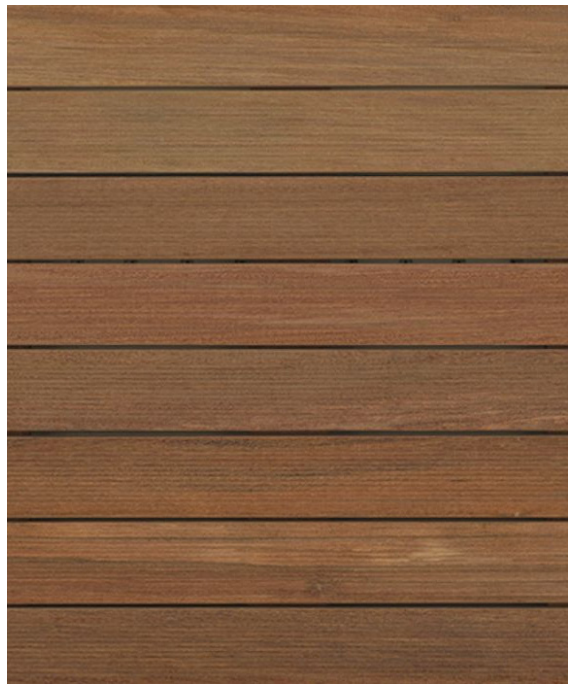
MAIN LEVEL

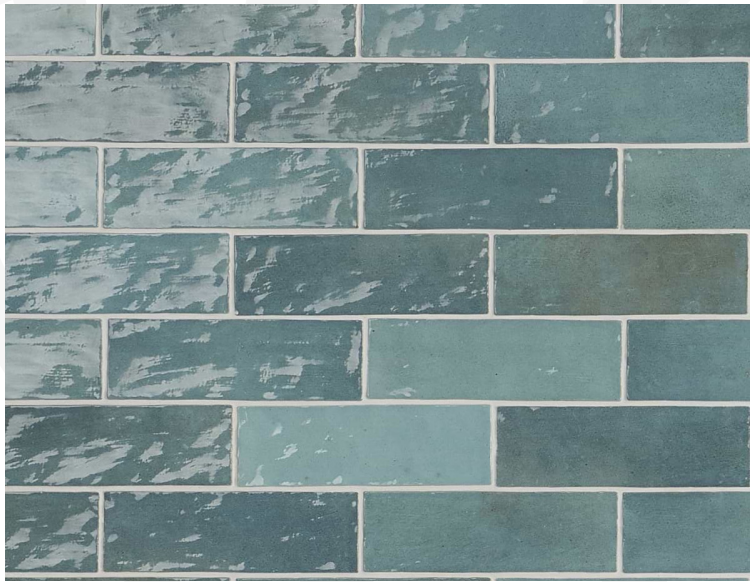
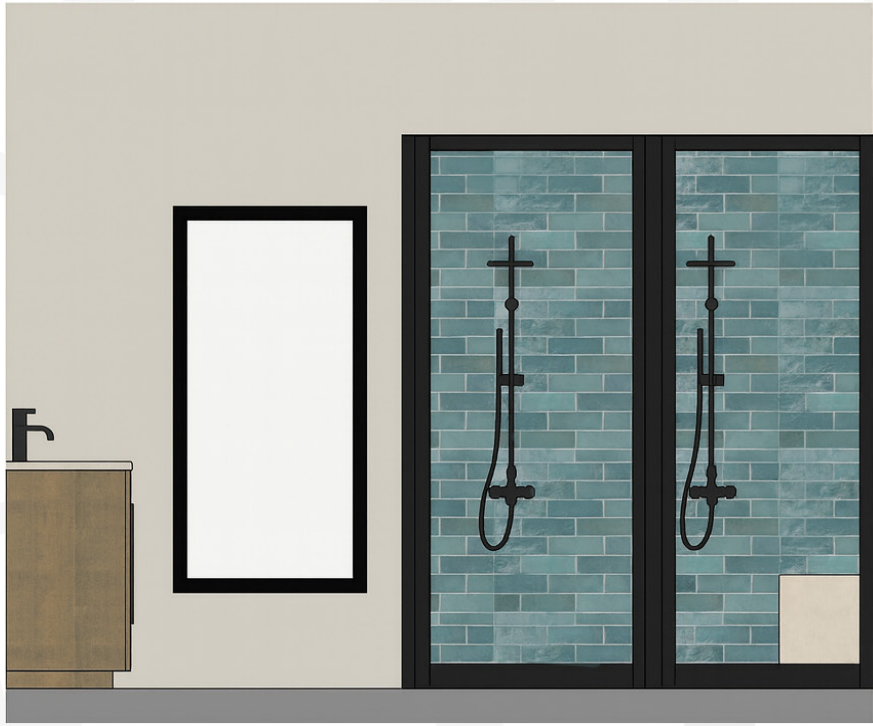
1. Entry
2. Living Room
3. Kitchen
4. Dining Room
5. Pantry
6. Powder Bath
7. Garage
8. Shop
9. Mudroom
10. Laundry Room
11. Study
12. Master Bath
13. Master Bedroom
14. Master Closet

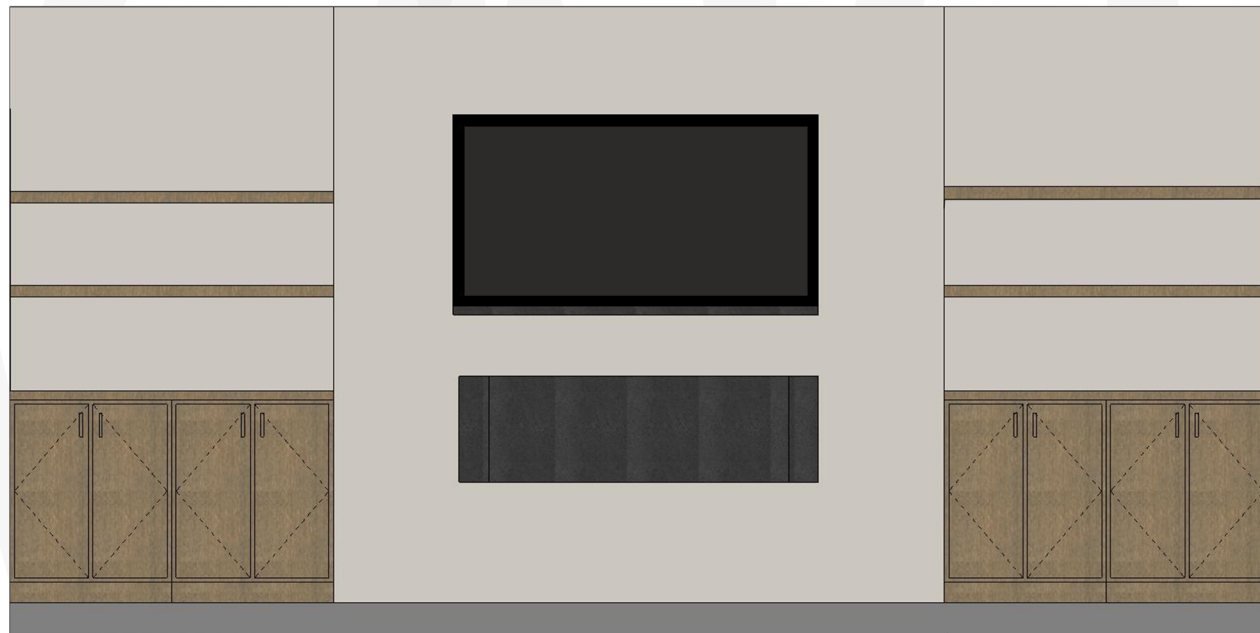
BASEMENT

15. Family Room
16. Snack Area
17. Hallway/Study Desk
18. Storage Room
19. Utilities
20. Bathroom
21. Bedroom 1
22. Bedroom 2

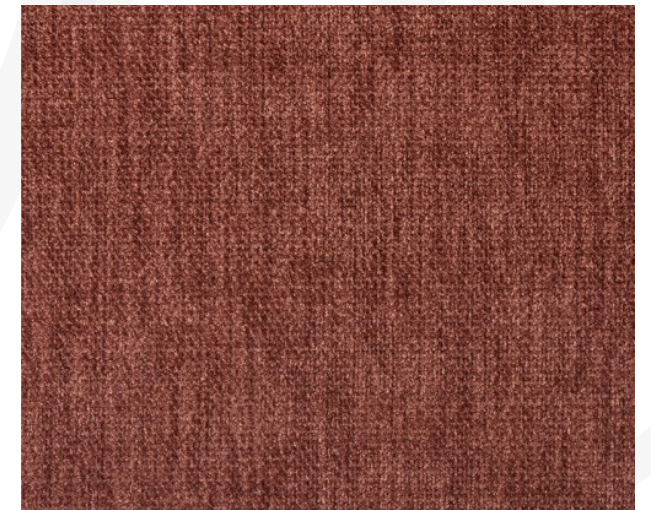
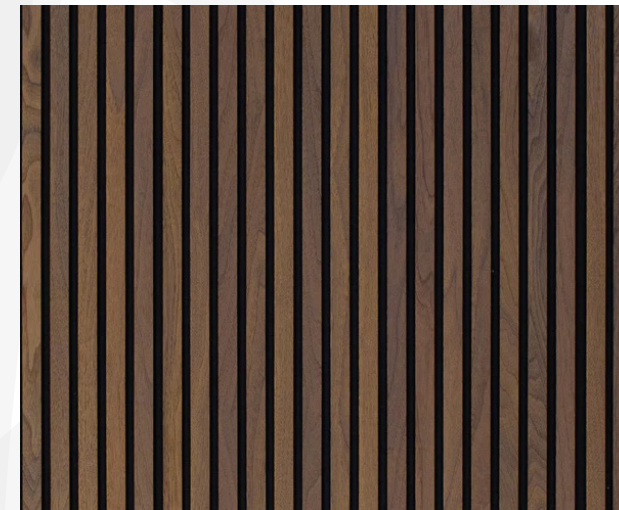






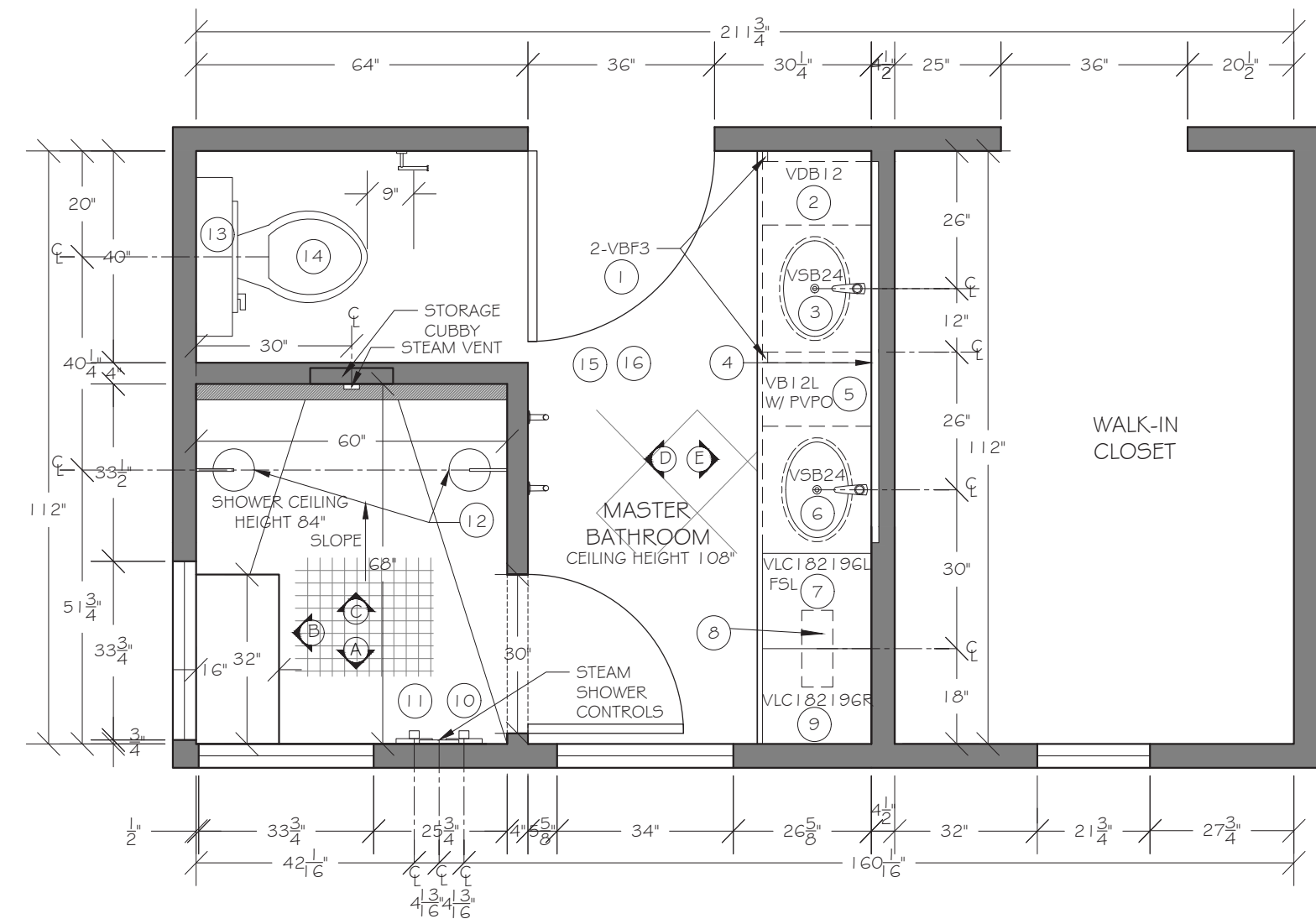


The TV center in the family room will feature custom cabinetry on either side to create symmetry, with floating shelves above to display meaningful items such as photos or keepsakes from trips. The cabinets below will provide concealed storage for electrical equipment and other household items, maintaining a clean and organized look.





02 TERRA PROJECT



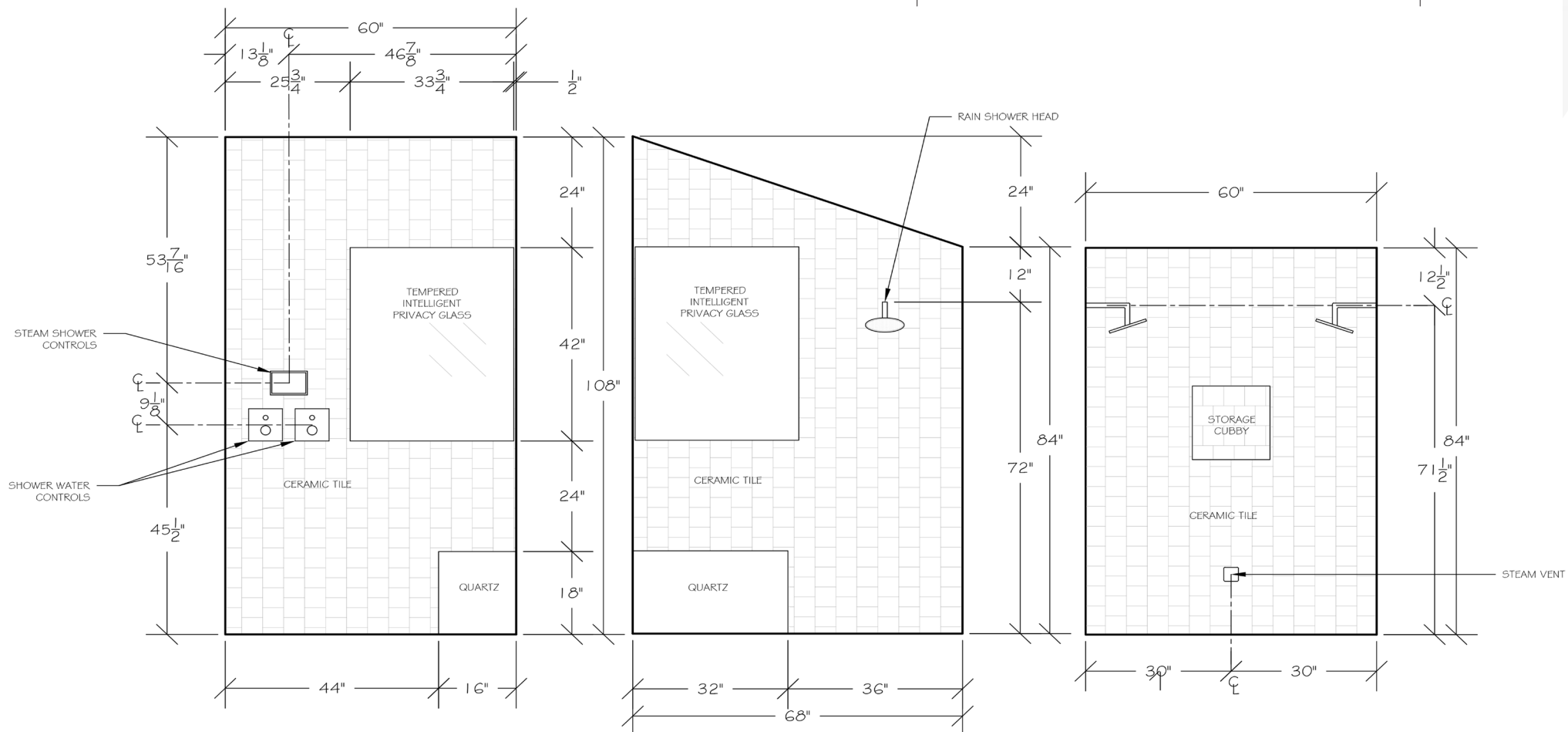
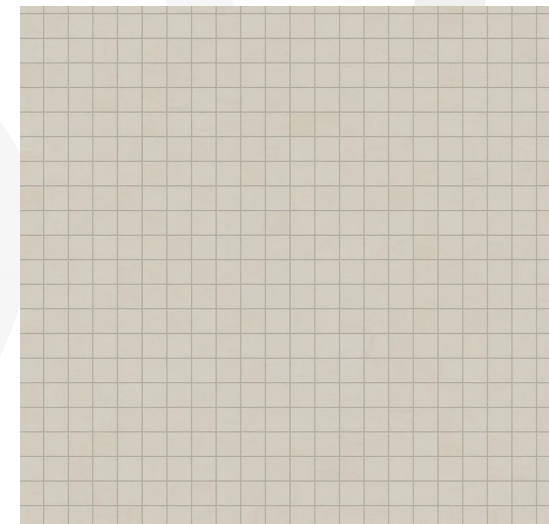
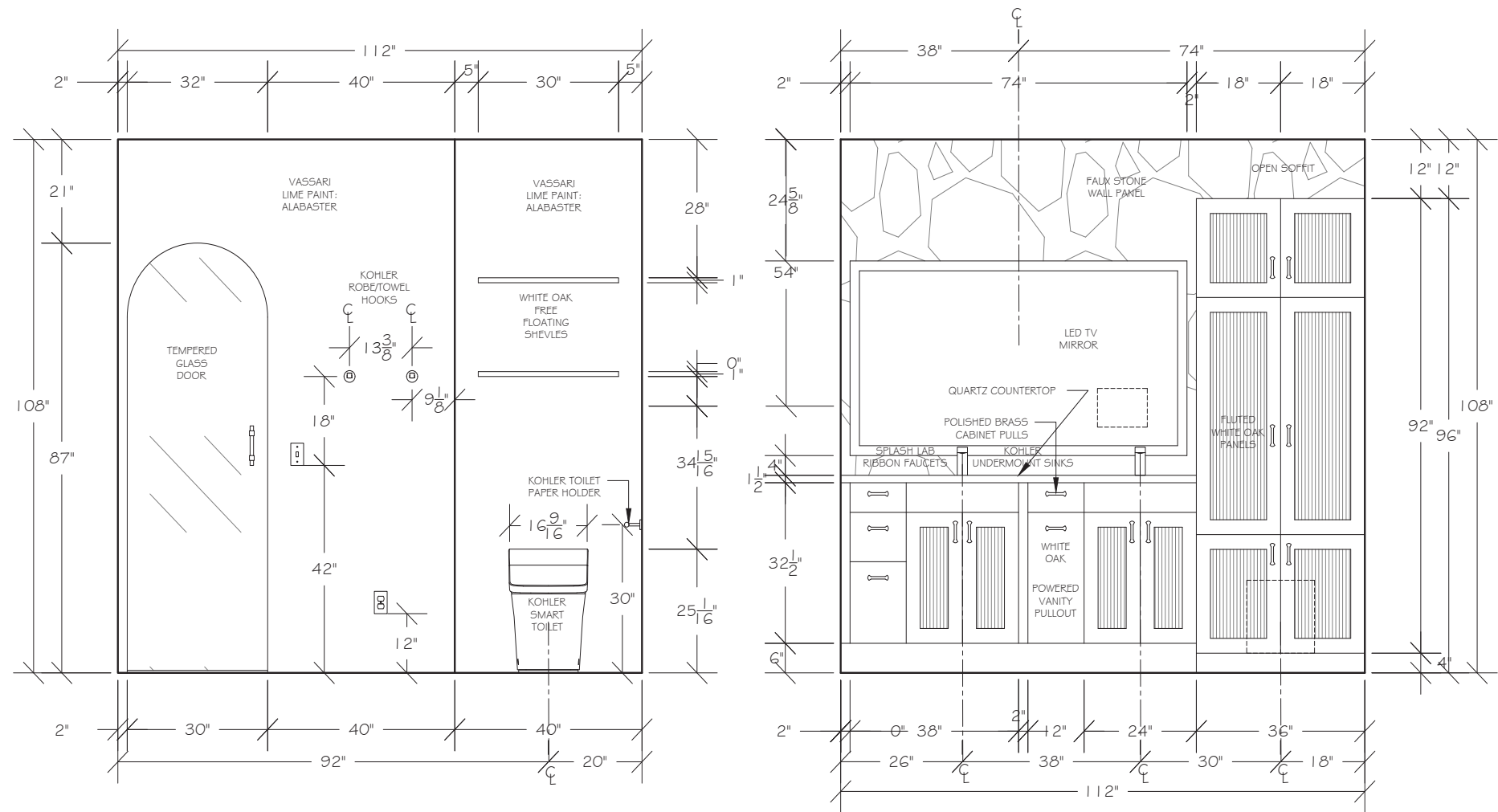
SPECIFICATIONS

- 1 2-VBF3, CUT TO APPROX 2"W AND MOUNT 6" AFF
- 2 VDB12, MOUNT 6" AFF REMOVE TOEKICK
- 3 VSB24, MOUNT 6" AFF REMOVE TOEKICK
FAUCET
THE SPLASH LAB, TSL.R.020.BR.ELE
THE RIBBON FAUCET
2 3/16"W X 5 1/16"H X 7 3/8"D
BRASS
UNDERMOUNT SINK
KOHLER, K-2209-96
CAXTON 17" UNDERMOUNT SINK
17"W X 7 1/2"H X 14"D
WHITE
- 4 TV MIRROR, SEE CONSTRUCTION PLAN FOR WALL CUT OUT
TV MIRROR
ARTFORMA, N/A
LED LIGHTED MIRROR WITH SMART APPLE SCREEN LOI
74"W X 39 3/8"H X 1 1/16"D
- 5 VDB12, MOUNT 6" AFF REMOVE TOEKICK
POWERED VANITY PULL OUT
HARDWARE RESOURCES, PVBPOF8-SC
8"W X 23 3/8"H X 19"D
WHITE BIRCH
- 6 VSB24, MOUNT 6" AFF REMOVE TOEKICK
FAUCET
THE SPLASH LAB, TSL.R.020.BR.ELE
THE RIBBON FAUCET
2 3/16"W X 5 1/16"H X 7 3/8"D
BRASS
UNDERMOUNT SINK
KOHLER, K-2209-96
CAXTON 17" UNDERMOUNT SINK
17"W X 7 1/2"H X 14"D
WHITE
- 7 VLC182196L, REMOVE RIGHT SIDE WALL IN BOTTOM SECTION
- 8 STEAM GENERATOR
MR. STEAM, MS90E-400E
E-SERIES STEAM GENERATOR
14 1/2"W X 14 3/4"H X 6 3/4"D
STAINLESS STEEL
- 9 VLC182196R, REMOVE LEFT SIDE WALL IN BOTTOM SECTION
- 10 SHOWER CONTROLS
HANS GROHE, 15762141
SHOWERSELECT THERMOSTATIC TRIM FOR 1 FUNCTION, SQUARE
6 1/8"W X 6 1/8"H X 3 1/4"D
BRUSHED BRONZE
QTY: 2
- 11 STEAM SHOWER PACKAGE
STEAM CONTROLS
MR. STEAM, ISTEAMXPB
ISTEAMX
7 5/8"W X 5 3/16"H X 1 7/8"D
POLISHED BRASS
STEAM VENT
MR. STEAM, 104104PB
AROMASTEAM
STEAMHEAD
3"W X 3"H X 1"D
POLISHED BRASS
- 12 SHOWER HEAD
SIGNATURE HARDWARE, 948948-18
8" MODERN ROUND
RAINFALL SHOWERHEAD
1.75 GPM
8"W X 8"H X 2 3/8"D
BRUSHED GOLD
QTY: 2
SHOWER ARM
SIGNATURE HARDWARE, 948962
STANDARD SHOWER ARM WITH FLARED FLANGE
7"W X 3 3/8"H
BRUSHED GOLD
QTY: 2
- 13 CUSTOM FLOATING SHELVES
30"W X 1"H X 7"D
WHITE OAK
2 SHELVES
- 14 COMFORT HEIGHT TOILET
KOHLER, K-29777-PA-O
INNATE ONE-PIECE
ELONGATED SMART
TOILET, DUAL-FLUSH
17"W X 25 1/16"H X 28 3/8"D
WHITE
- 15 1 TK-8
PLYWOOD TOEKICK
- 16 BATHROOM EXHAUST FAN
BROAN, AE110K
110 CFM BATHROOM
EXHAUST FAN WITH CLEAN
COVER GRILL
12 1/4"W X 12 1/4"H
WHITE

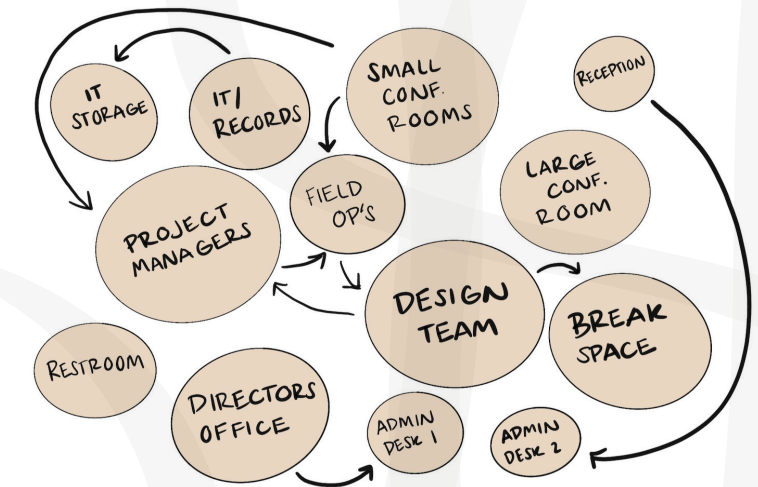
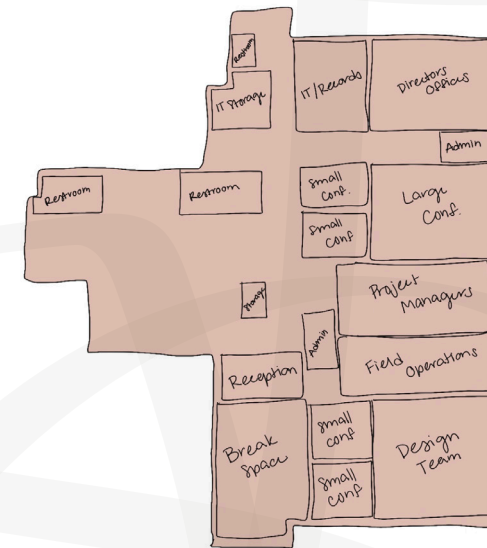
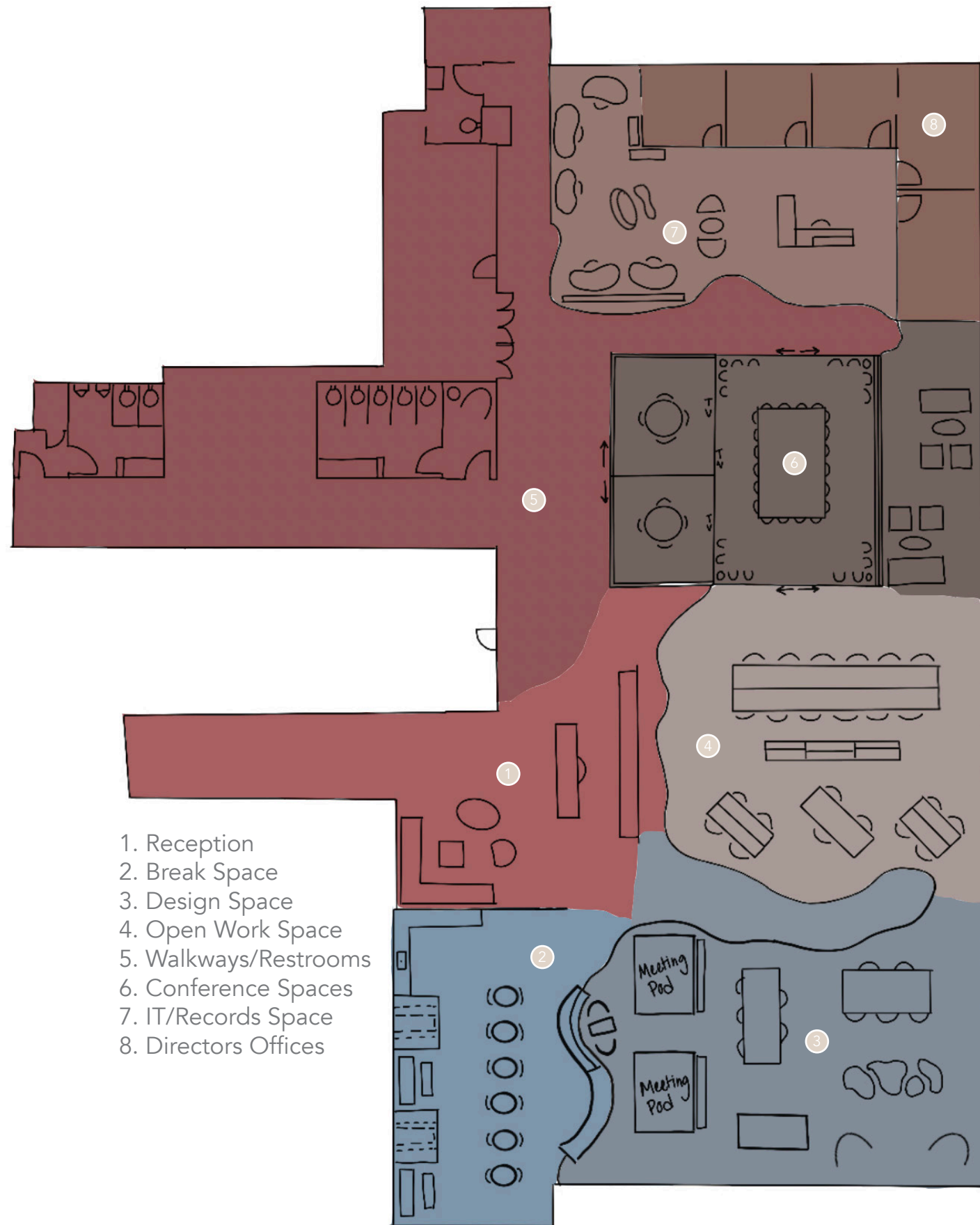
This Tuscan bathroom was transformed from frightful to functional through a dramatic and much-needed remodel. The updated NKBA floor plan, shown on the left, incorporates all project requirements while elevating the space with thoughtful design details. Key client requests included a steam shower, a semi-private toilet compartment, and ample storage throughout the vanity and bathroom. Each of these needs was successfully addressed, with additional features enhancing both beauty and functionality.

A dedicated storage area for the steam generator was integrated for efficient use of space and ease of maintenance. The steam shower features a sloped floor and a sloped ceiling, designed to direct condensation toward the drain and provide a more comfortable experience. Storage solutions are found throughout the bathroom, from concealed space-savers within cabinetry to floating shelves that offer both utility and visual interest. Finally, a neutral palette of colors and textures brings a sense of tranquility and cleanliness, completing the transformation into a serene, spa-like retreat.



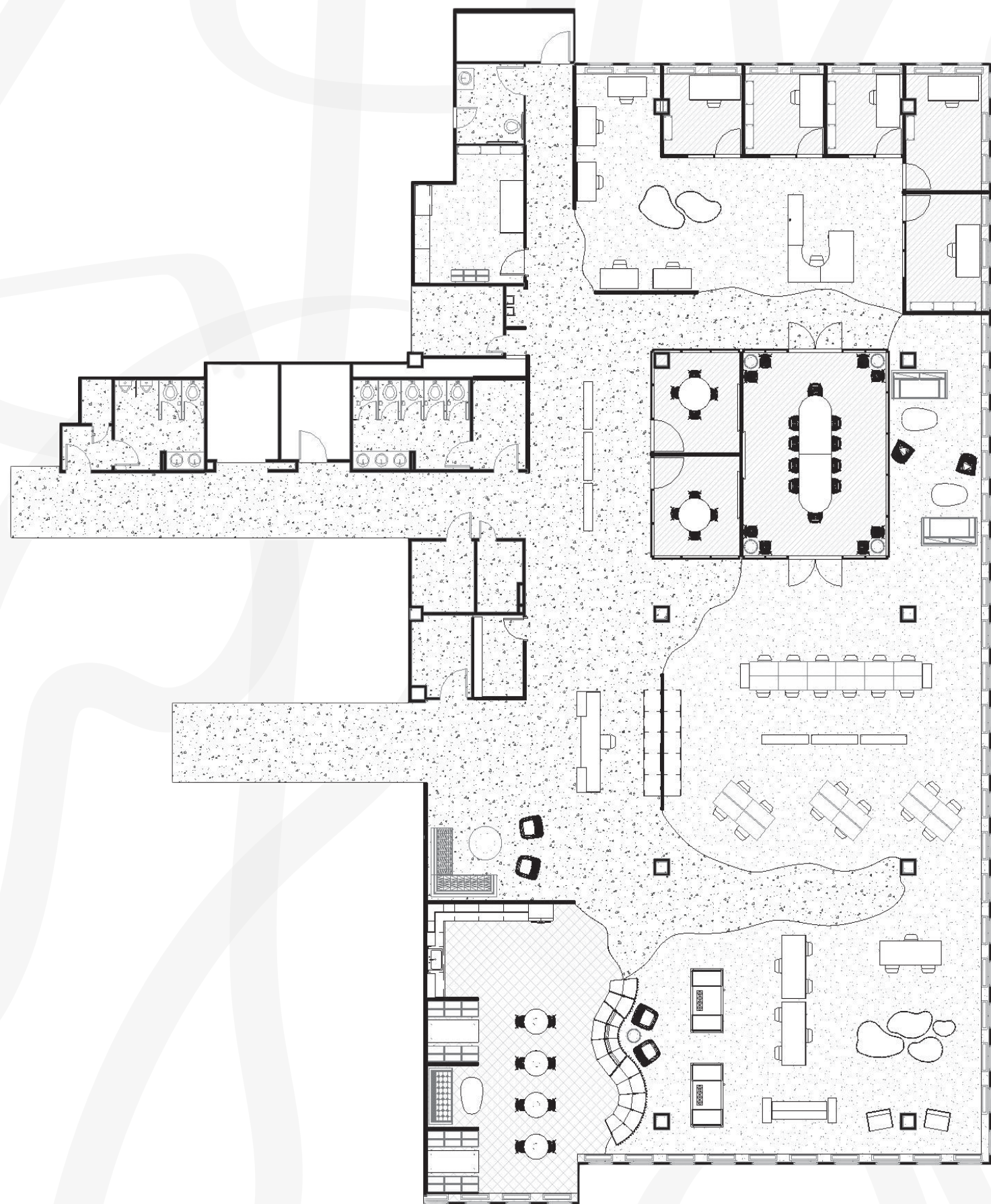






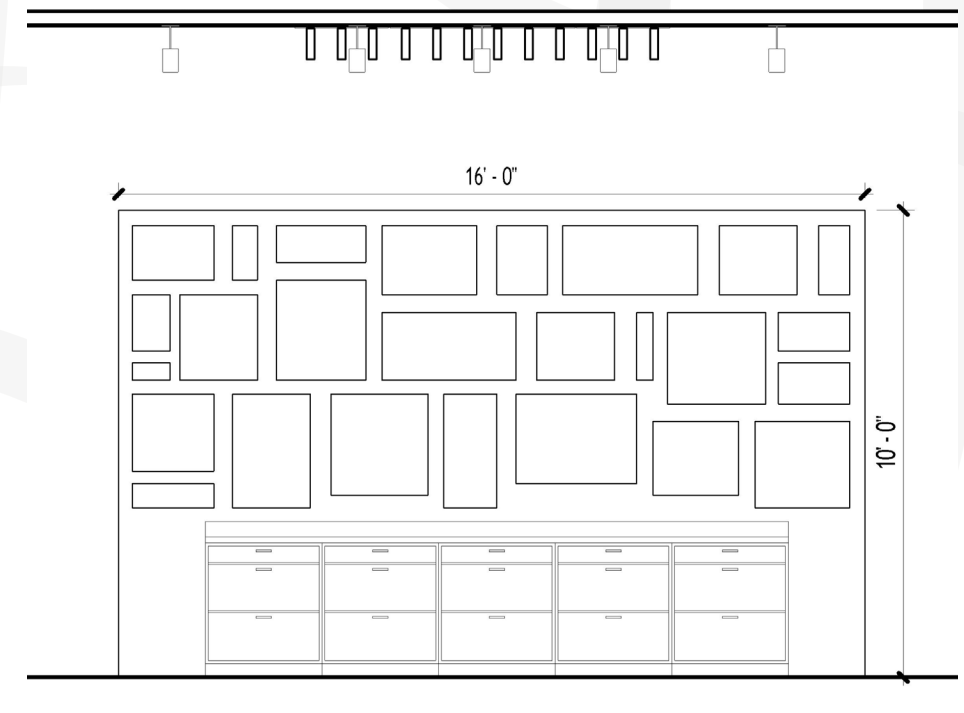
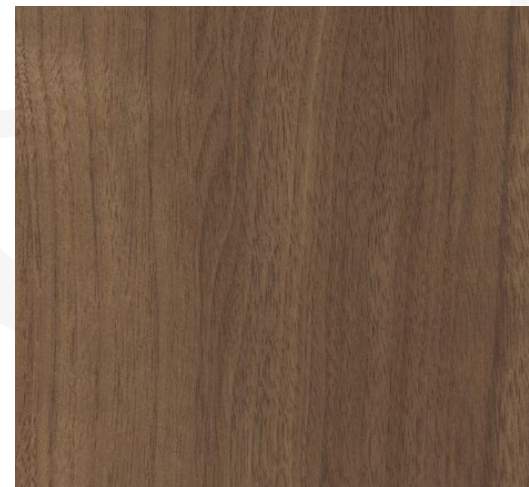
The goal of the space is to give each team its own area while keeping them connected to encourage collaboration. Conference rooms are distributed throughout, offering convenient spots for both planned and spontaneous meetings.



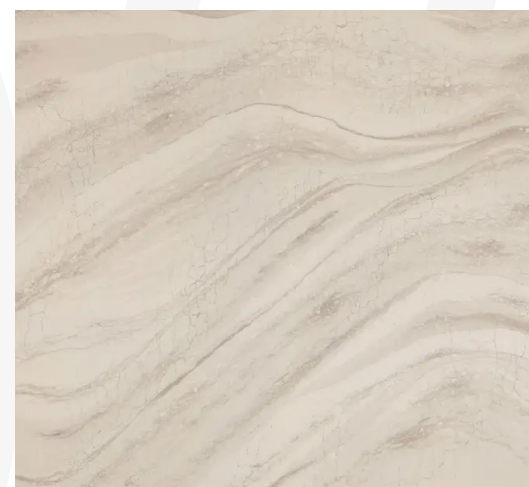
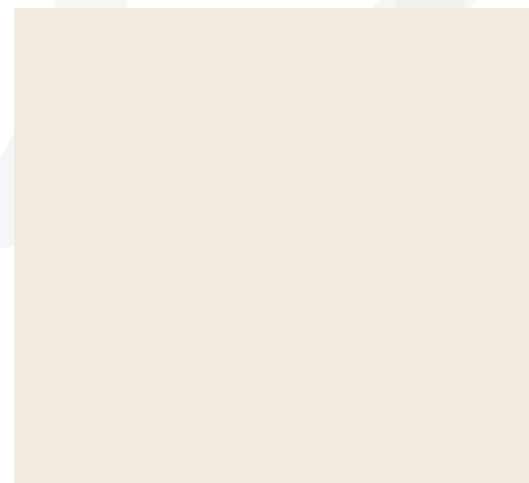


The workspace is designed as a clean, functional, and inspiring environment that blends the simplicity of Scandinavian design with the structured clarity of Bauhaus principles. Warm, natural textures and simple forms create a welcoming atmosphere, while bold colors and playful geometry add moments of creativity and energy. To soften the rigidity of the architecture, curves in furniture layouts and flooring transitions introduce fluidity, guiding circulation and adding visual interest. The result is a flexible, accessible workspace that balances focus with collaboration, structure with warmth, and functionality with movement.

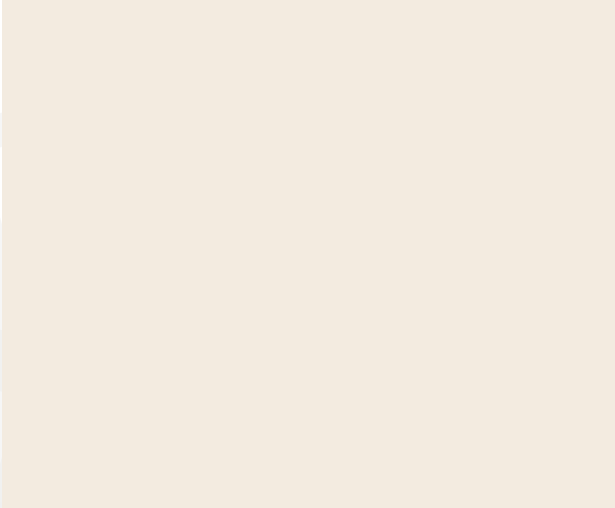
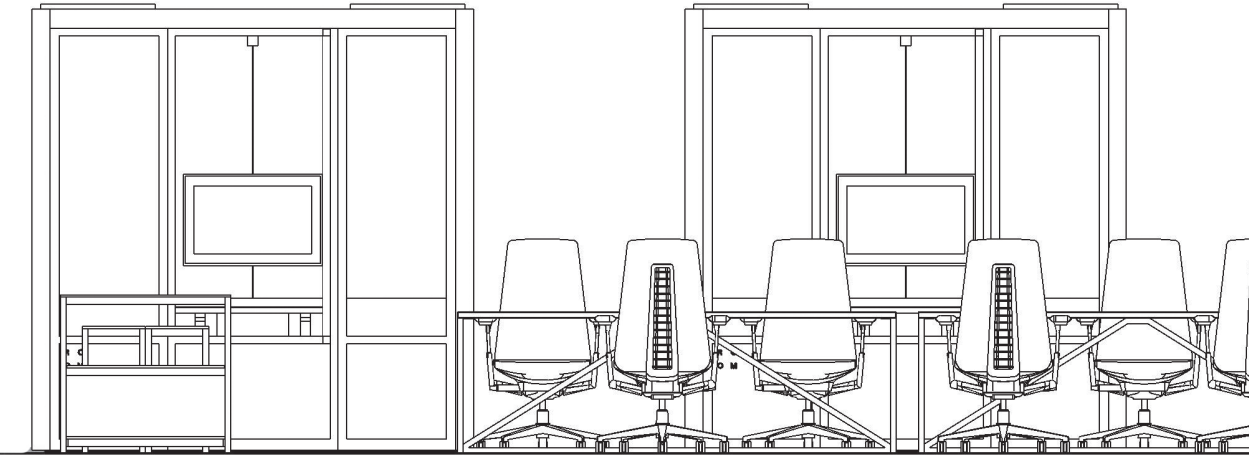
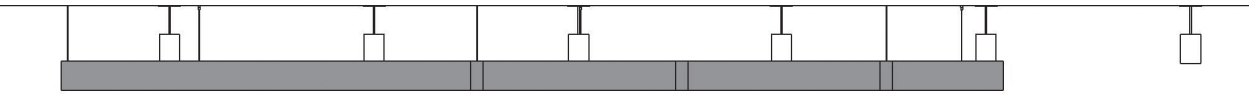




A detailed view of the wall installation behind the reception desk with walnut laminate and custom cabinets built for file storage.

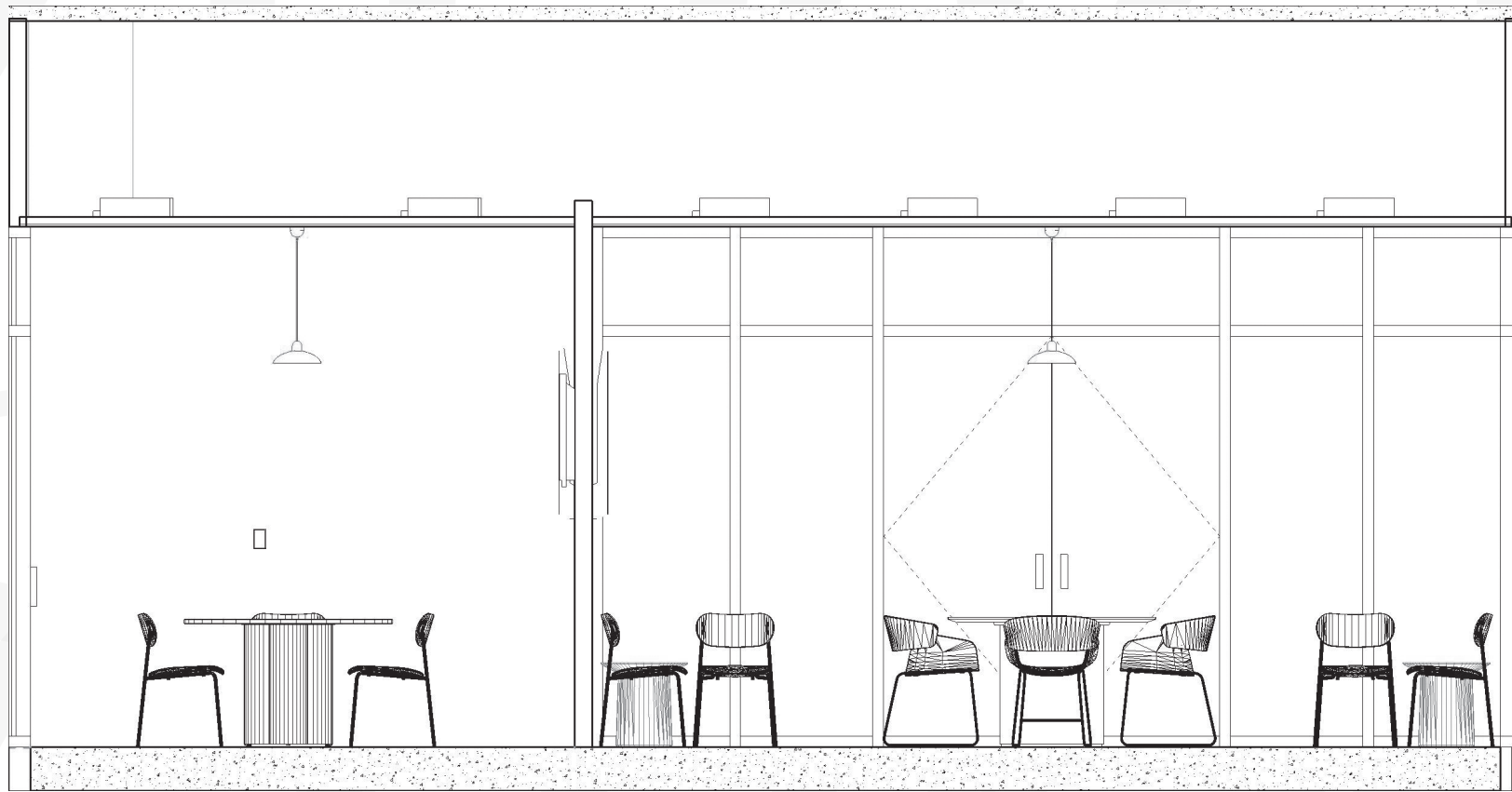


In the open workspaces, collaboration was a primary design focus. To support this, both furniture and ceiling fixtures were carefully selected to encourage interaction and teamwork. The main task chair used throughout the space is the Fern Chair by Haworth, chosen for its mobility, ergonomic support, and contemporary aesthetic. To address acoustical challenges in the open environment, sound-absorbing ceiling treatments were installed. In addition, two soundproof meeting pods by ROOM were incorporated to provide private spaces for focused discussions while minimizing noise transfer within the office.

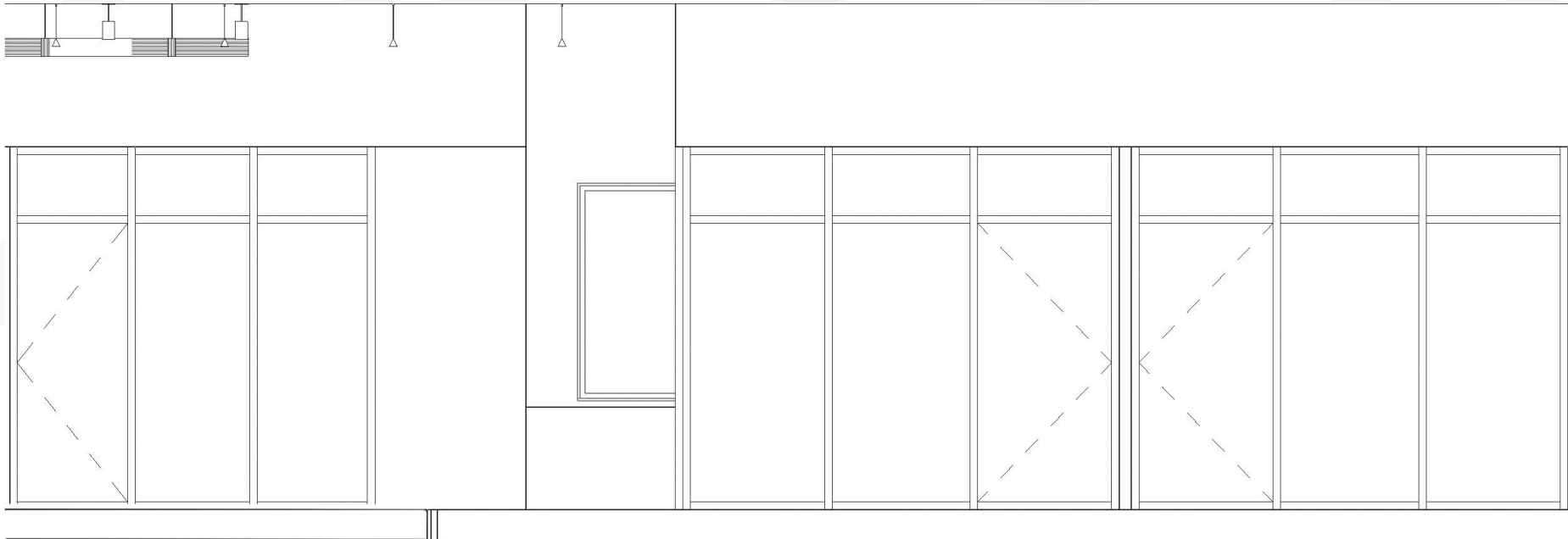


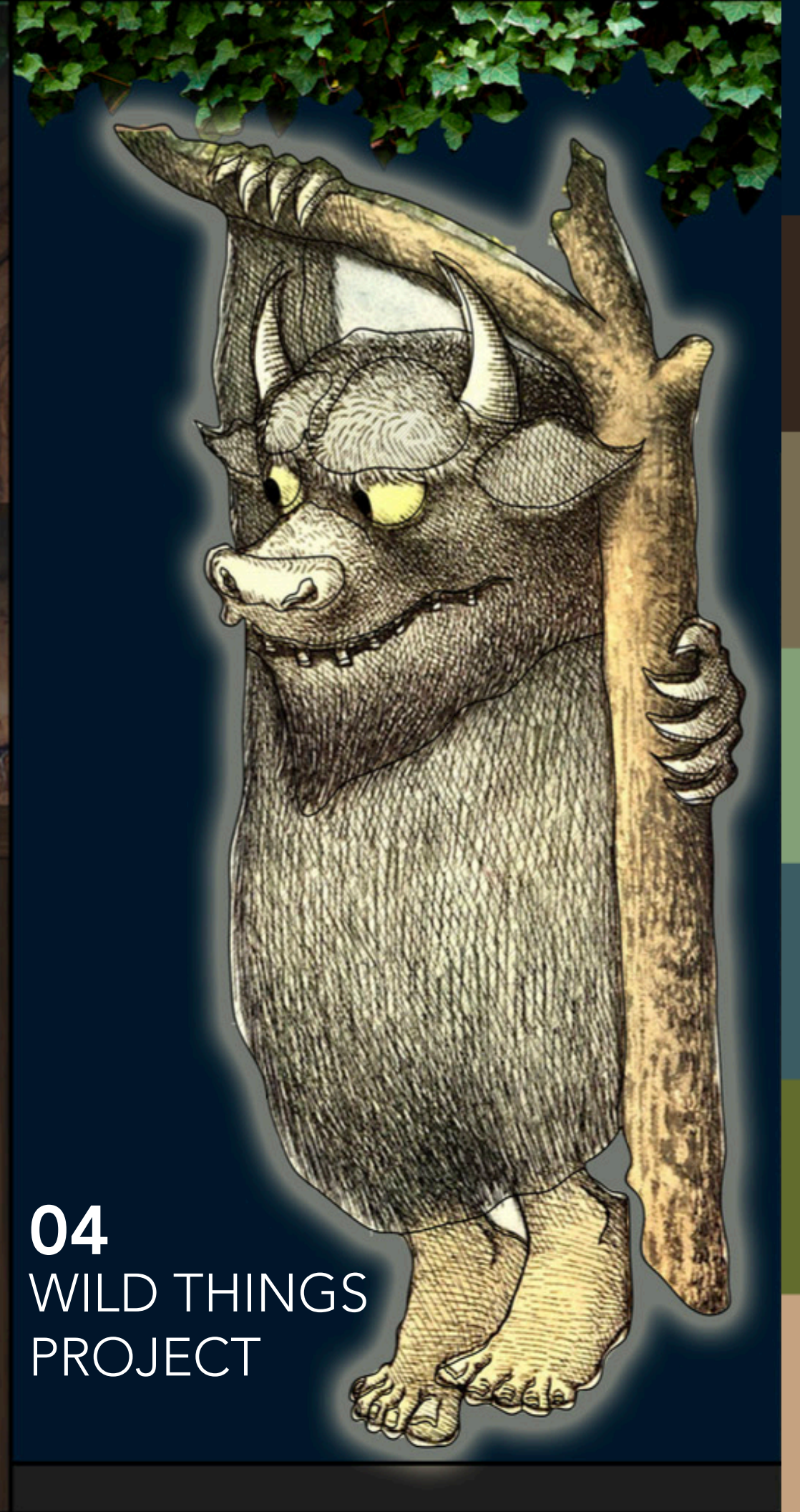
A visual of the design team space showing the original sketch, the revit model, and the rendered image.





In both the conference rooms and the directors' offices, daylight was a key design consideration. The goal was to provide privacy without sacrificing natural light for the rest of the workplace. To achieve this, window walls were used throughout the space. These enclosures create private, focused areas for meetings while still allowing daylight to flow into the interior of the office, maintaining a bright and open atmosphere.



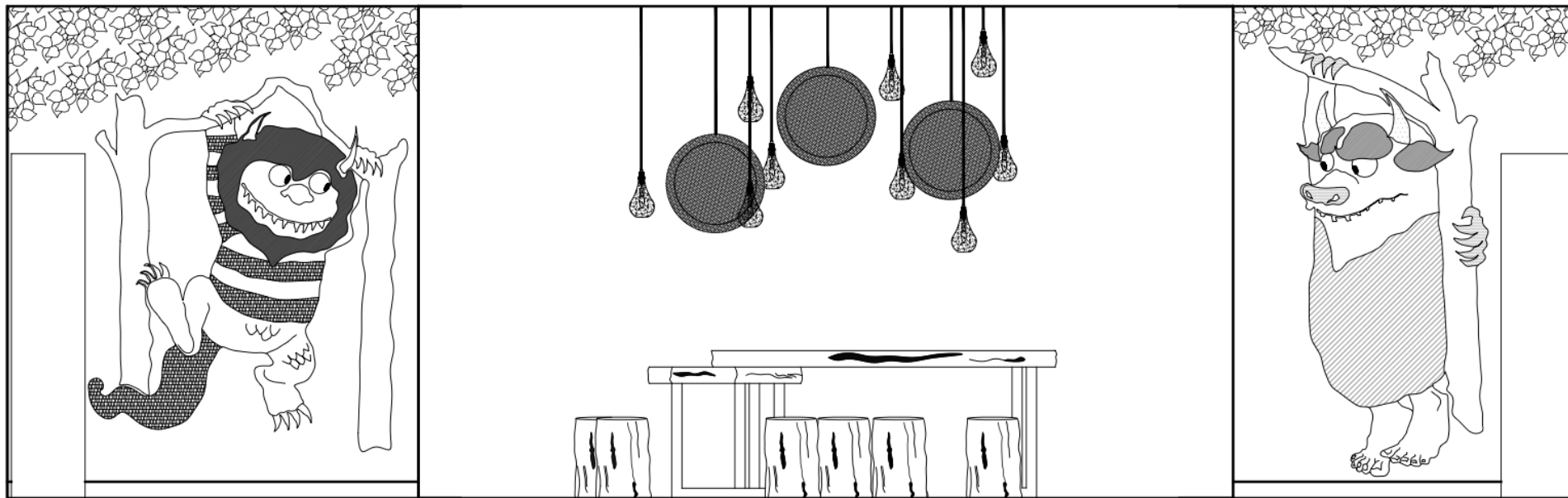


04 WILD THINGS PROJECT



Inspired by the beloved children's book *Where the Wild Things Are*, this space is designed to spark imagination and encourage kids to dream big while staying true to themselves. Featuring cozy gaming spaces and custom jungle gym platforms, the environment transforms into a magical world of adventure and discovery.





To really bring this space to life, custom light fixtures were made to resemble characters from the book. The lights are made from 1" acrylic sheets, each with the graphic laser printed on to the sheet. In the back of the sheet, there are small channels cut into the sheet to create a place for LED light strips to be placed.

Another feature that was used to bring the space to life was the custom wallcovering done to resemble the illustrations in the book. When entering from the front of the space, the wallcovering was made to look like Max's Bedroom. The further back in the space you get, the more the jungle comes to life with the monster light fixtures and faux greenery coming down from the ceiling.



Custom Acrylic Sheet
Light Fixture - Max

THANK
YOU