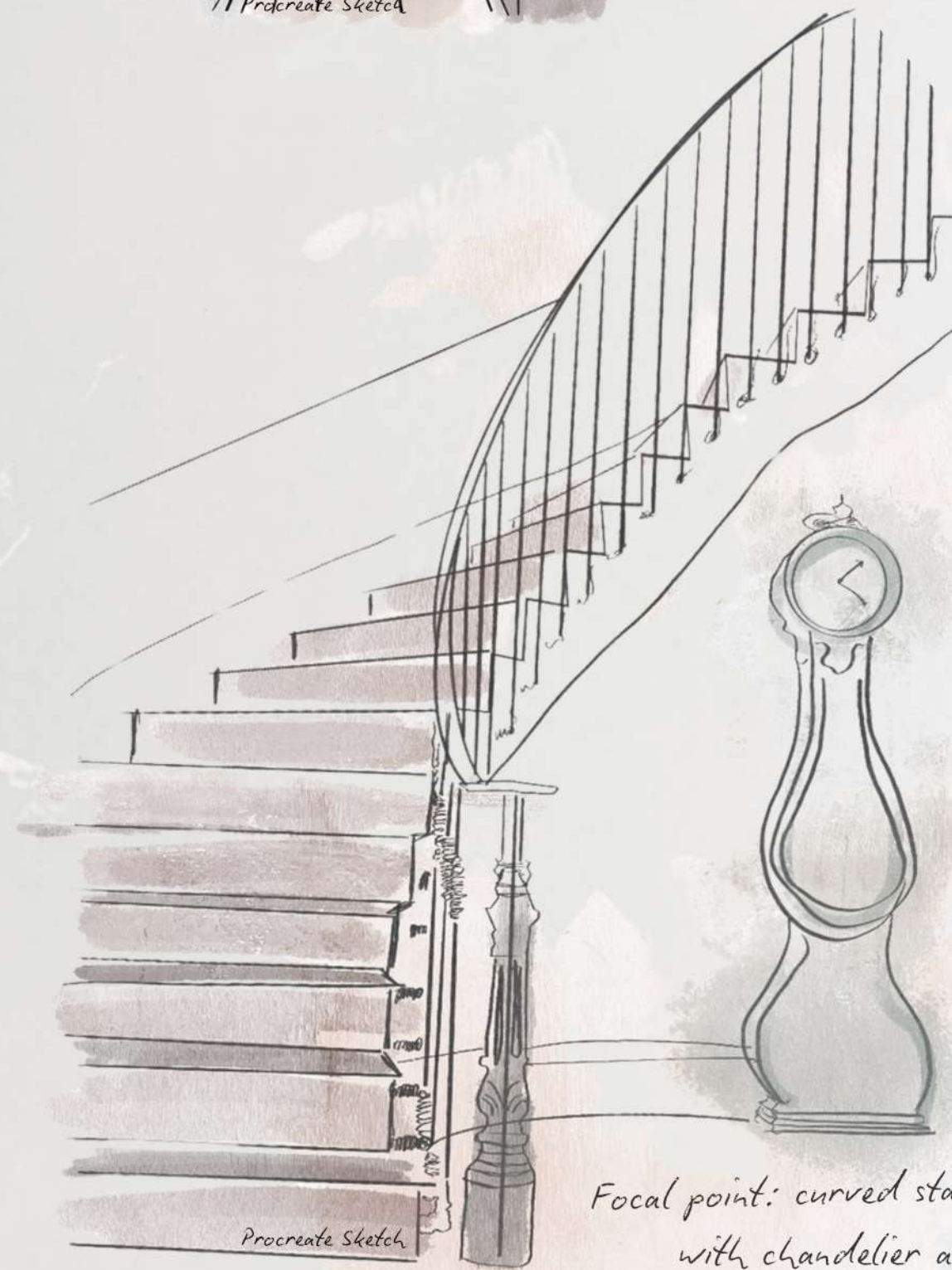




RUSSELL
INTERIORS



Hidden gems: extra storage in mudroom and statement custom cabinetry.



*Focal point: curved staircase with chandelier above.
Make sure the stairs are flooded with natural light*

BOUNTIFUL HOME REMODEL



This two-story residential renovation in Bountiful, Utah, was designed with both lifestyle and income in mind. The young homeowner—a college student herself—envisioned a space where she could enjoy the freedom of her own private bedroom while embracing the social energy of dorm-style living. The solution: an upscale women's dorm for up to seven residents, blending comfort, functionality, and modern style. The layout features shared amenities like a cozy library, an outdoor living area, and a versatile flex space perfect for late-night study sessions or weekend gatherings. Every detail was tailored to create not just a place to stay, but a place to make memories—and make it lucrative.

BOUNTIFUL UTAH



RESIDENTIAL

PRIVATE
BATHROOMS!!



Procreate Sketch



CONCEPT 1

One of the biggest challenges of college dorm life? Sharing a bathroom with fifty other students. This design flips that norm, giving each bedroom its own private bath. Vintage dressers and tables are repurposed as vanities, adding character while promoting sustainability. It's dorm living, reimagined with elegance, comfort, and individuality in mind.

academic study for
all tenants



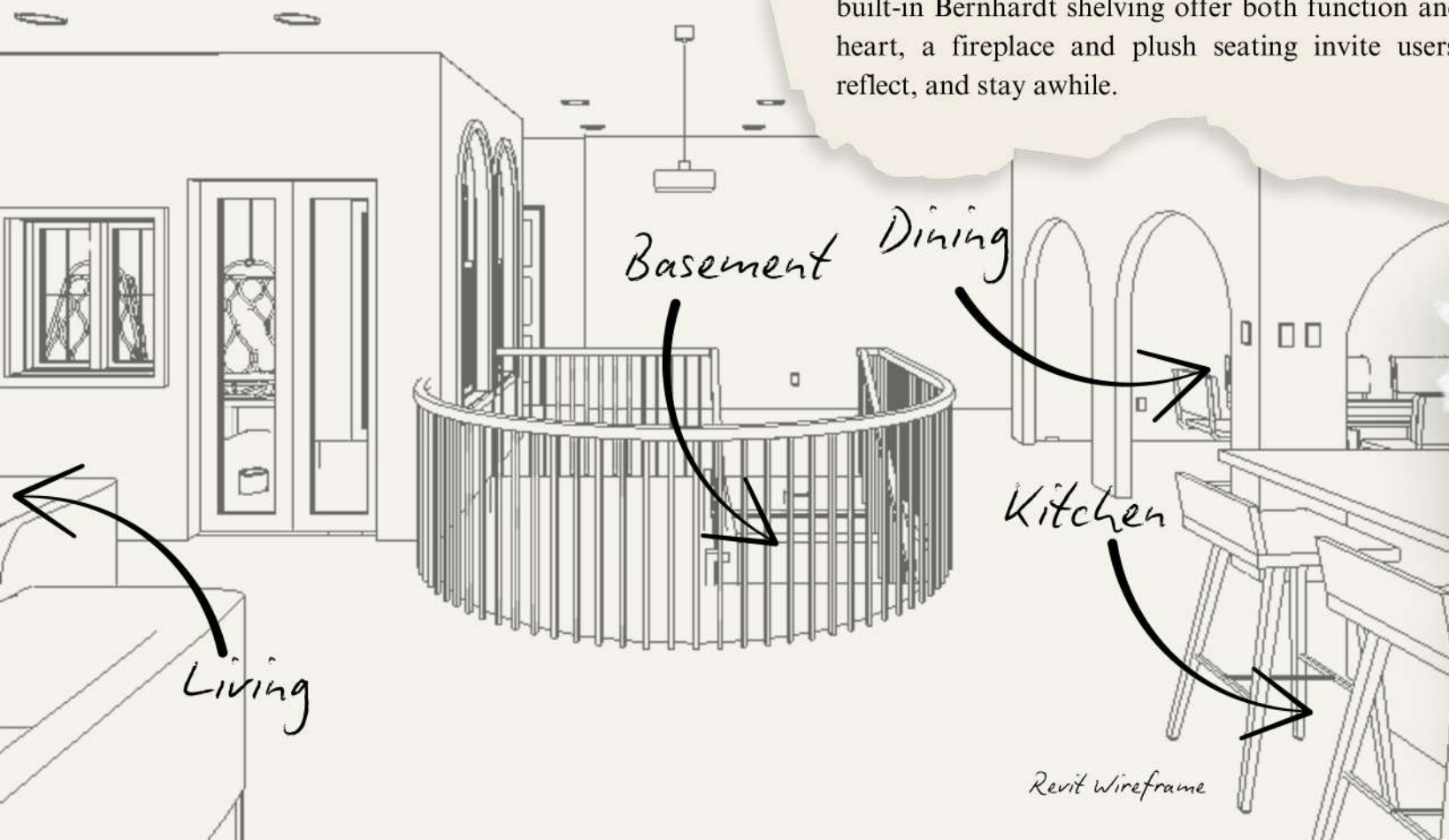
CONCEPT 2



Procreate Sketch

This library was designed to be more than a study space—it's an atmosphere of warmth and quiet sophistication. Rich mahogany ceilings contrast with light maple floors, balancing tradition with brightness. Inspired by Ivy League libraries, long study tables and built-in Bernhardt shelving offer both function and elegance. At its heart, a fireplace and plush seating invite users to slow down, reflect, and stay awhile.

Entry View



MAJOR CONCEPT:

capitalize on ORIGINALITY
each bedroom has
unique color palette: elegant
hues of blues and green



CONCEPT 3

Each bedroom was designed as a personal retreat—calm, refined, and deeply individual. Layered textures, soft lighting, and warm wood tones create a sense of comfort without compromising elegance. Vintage furnishings and subtle, curated details reflect the occupant's personality while nodding to sustainability. The result is a space that feels both restful and rooted in thoughtful design.



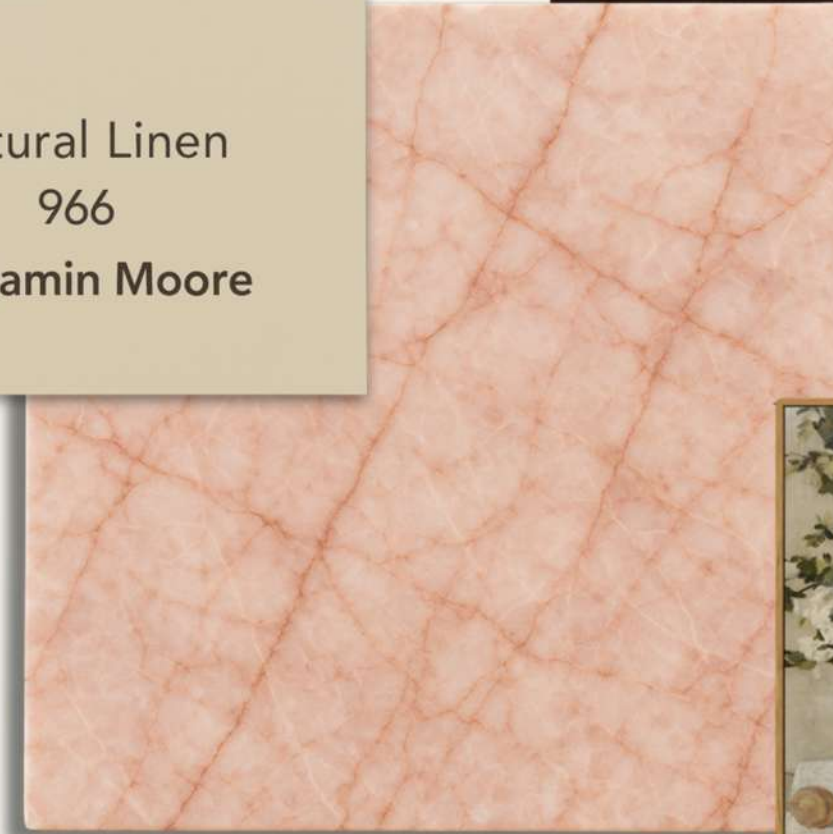
Procreate Sketch

KITCHEN



ENLARGED KITCHEN PLAN
1/2" = 1'-0"

Natural Linen
966
Benjamin Moore



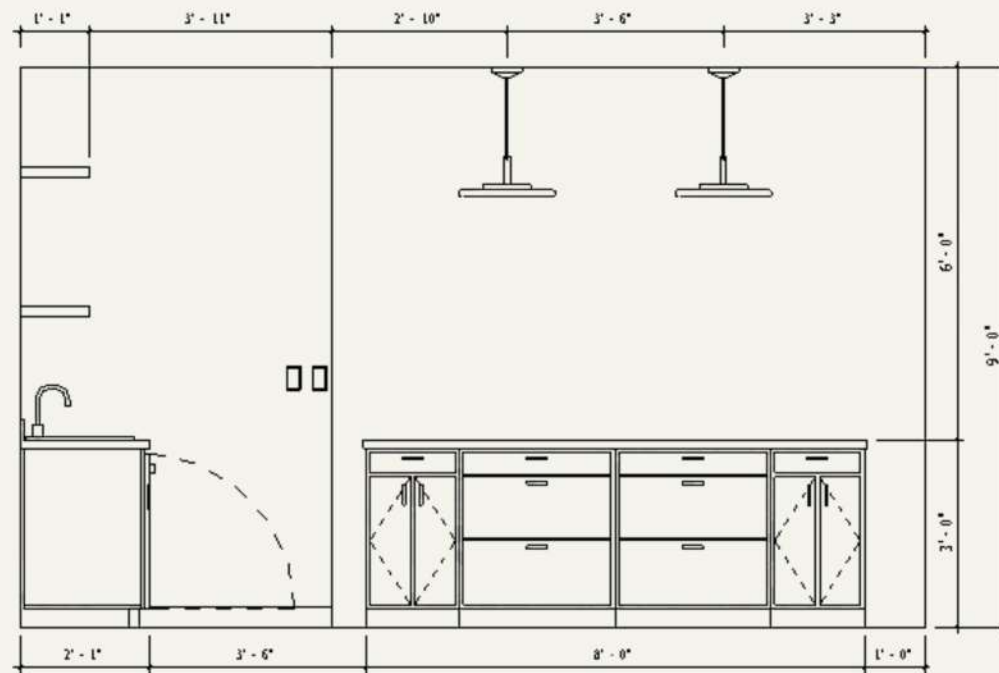
"The question isn't who is going to let me. It's who is going to stop me."
/ (Ayn Rand) / The Seventeen Magazine



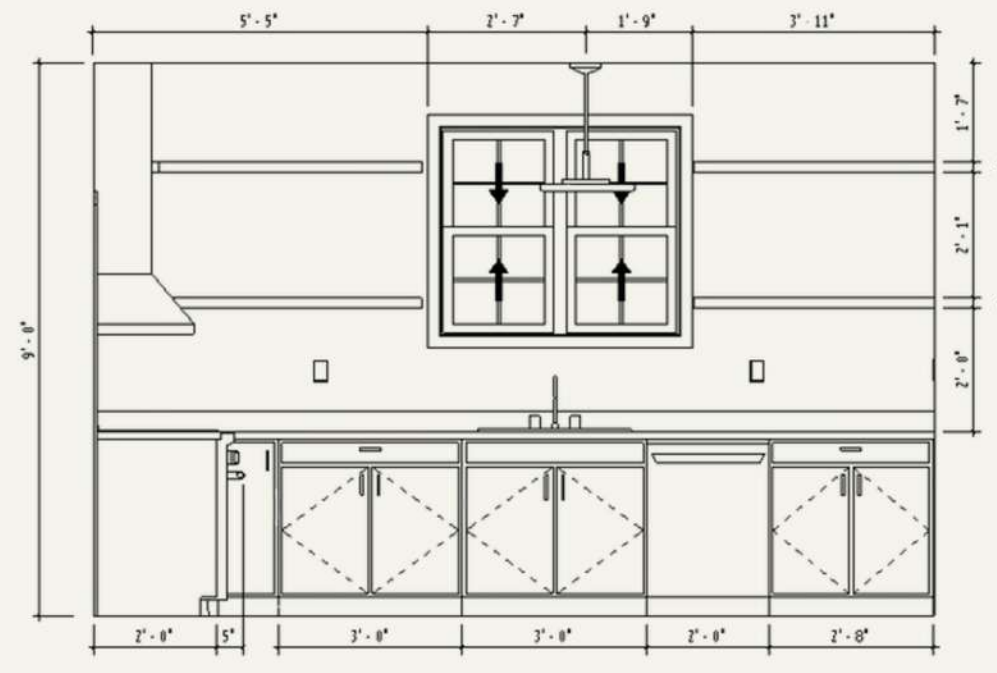
Designed for women in education, this kitchen embraces a confident 'pink-out' moment. A striking pick-pink marble takes center stage, infusing the space with bold character and unapologetic flair.



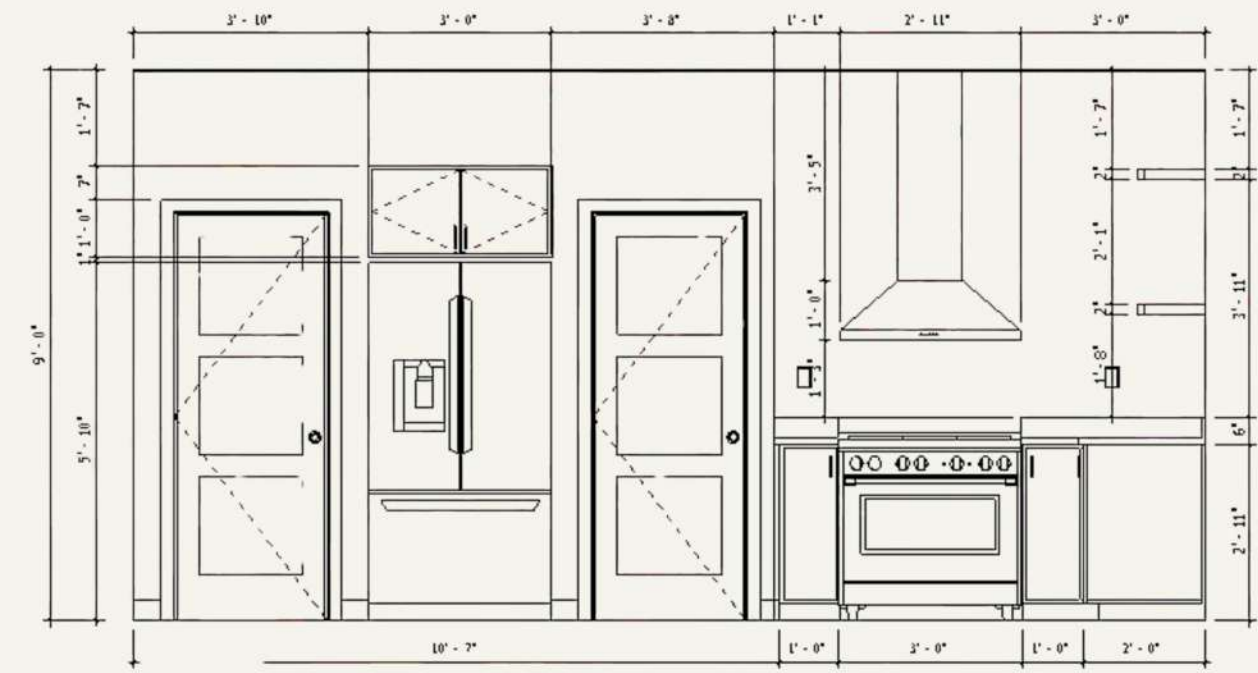
Revit Wireframe | Procreate Collage



KITCHEN W WALL
1/2" = 1'-0"



KITCHEN S WALL
1/2" = 1'-0"



KITCHEN E WALL
1/2" = 1'-0"



Modeled in Revit | Rendered in Enscape



Enhanced by ChatGPT

BOUNTIFUL HOME REMODEL | ACADEMIC STUDY

SEVENTH FLOOR CHURCH OFFICE BUILDING



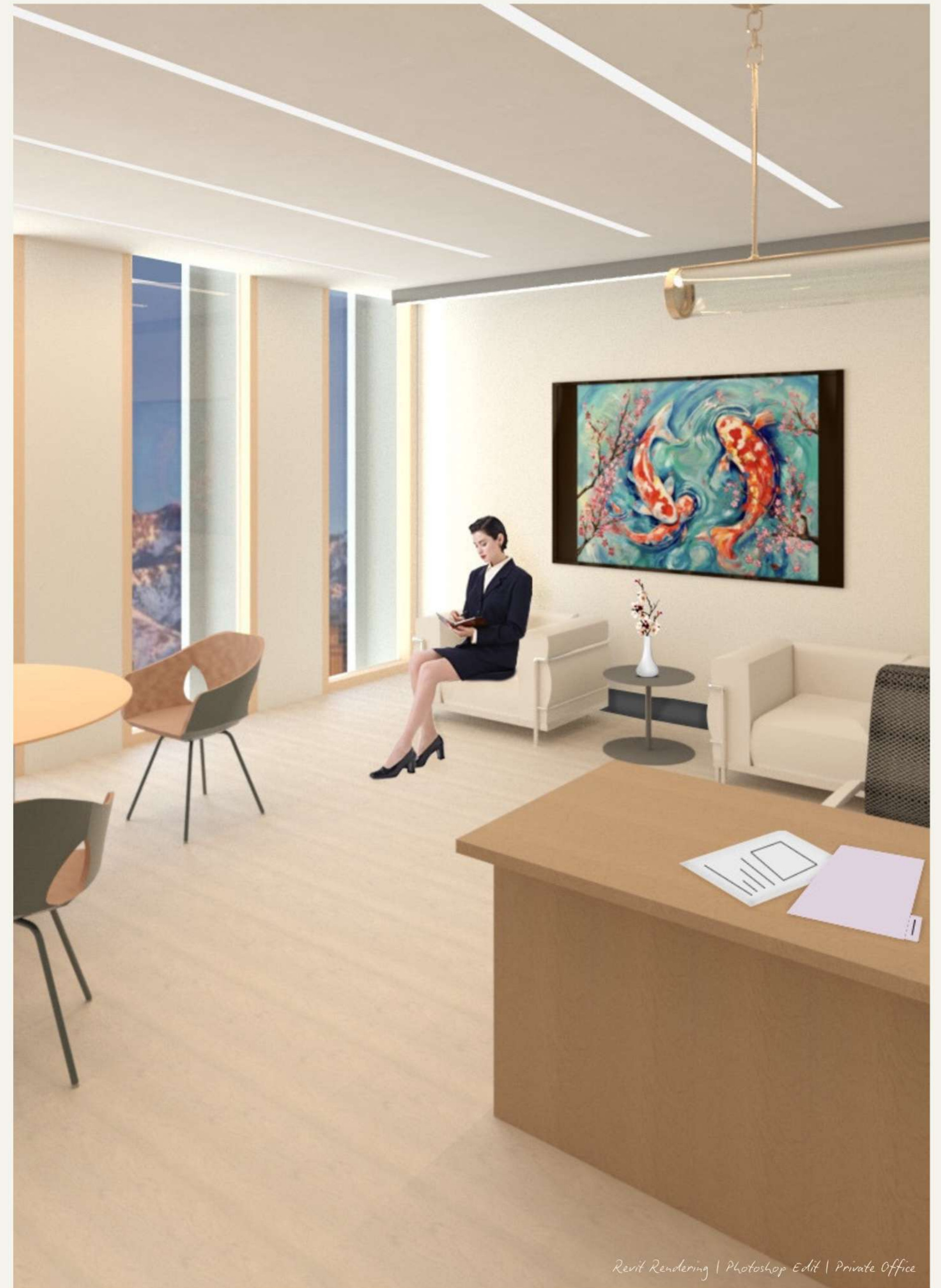
Set on the 7th floor of the Church Office Building in downtown Salt Lake City, this 10,909 sq ft project reimagines a corporate workspace with wellness, efficiency, and collaboration at its core. Informed by research on team dynamics and productive flow, the layout integrates five executive offices, multiple meeting rooms, a large conference room, vibrant collaboration zones, and a thoughtfully designed breakroom.

Biophilic elements, strategic use of natural materials, and intentional access to the floor's panoramic city views enhance the environment—offering moments of calm, clarity, and connection throughout the day.

SALT LAKE CITY, UTAH

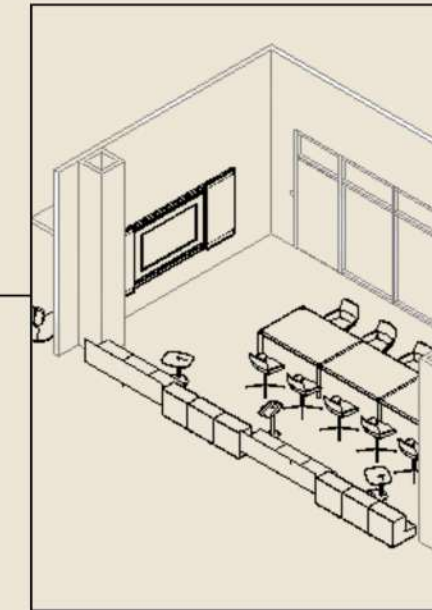
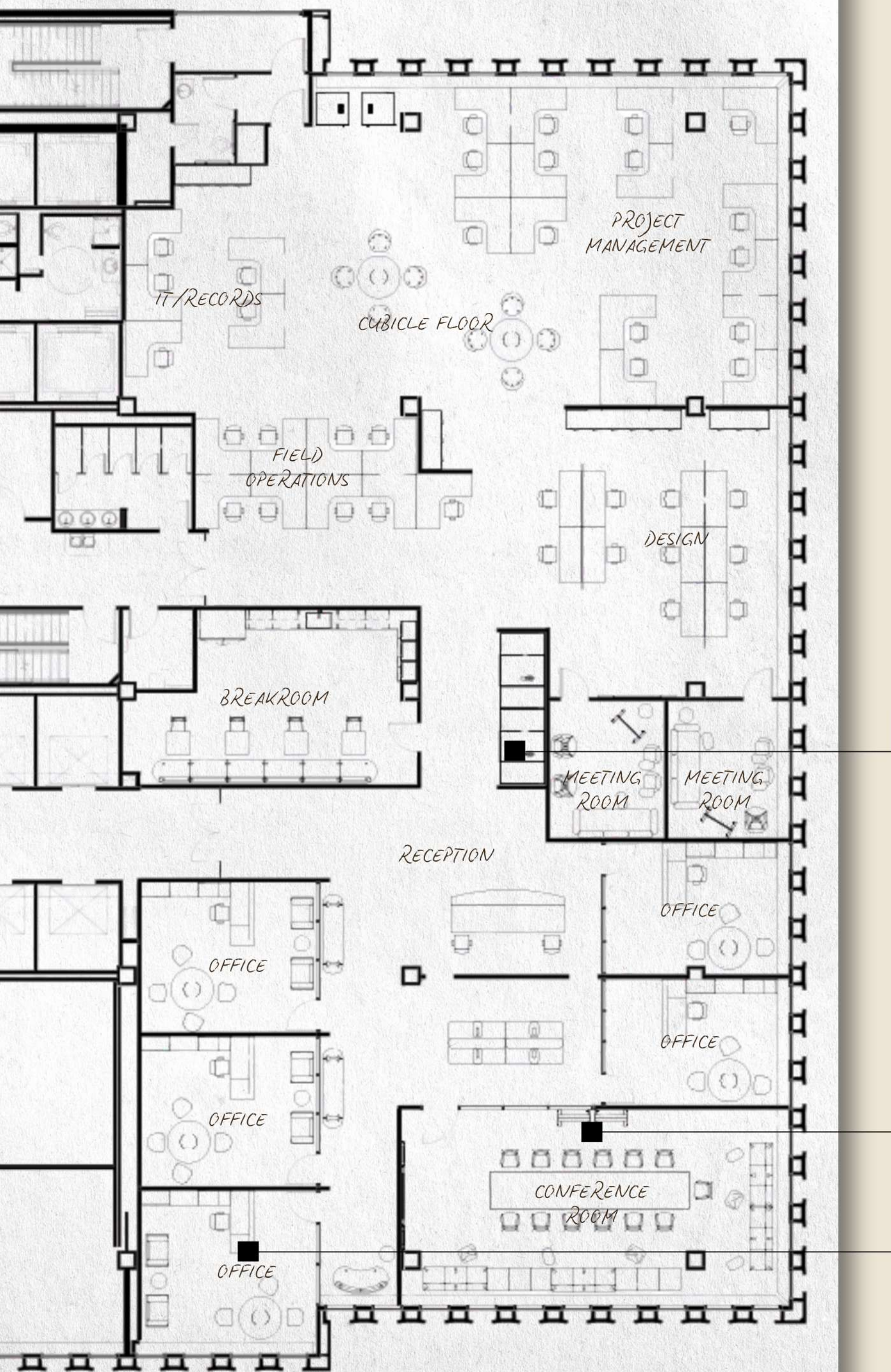


COMMERCIAL



Revit Rendering | Photoshop Edit | Private Office

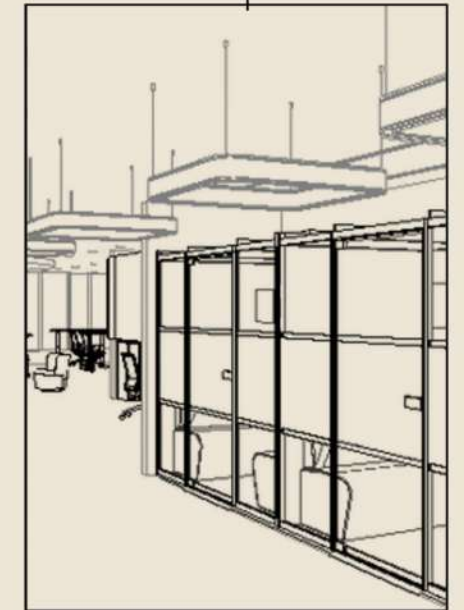




CONFERENCE ROOM



OFFICE

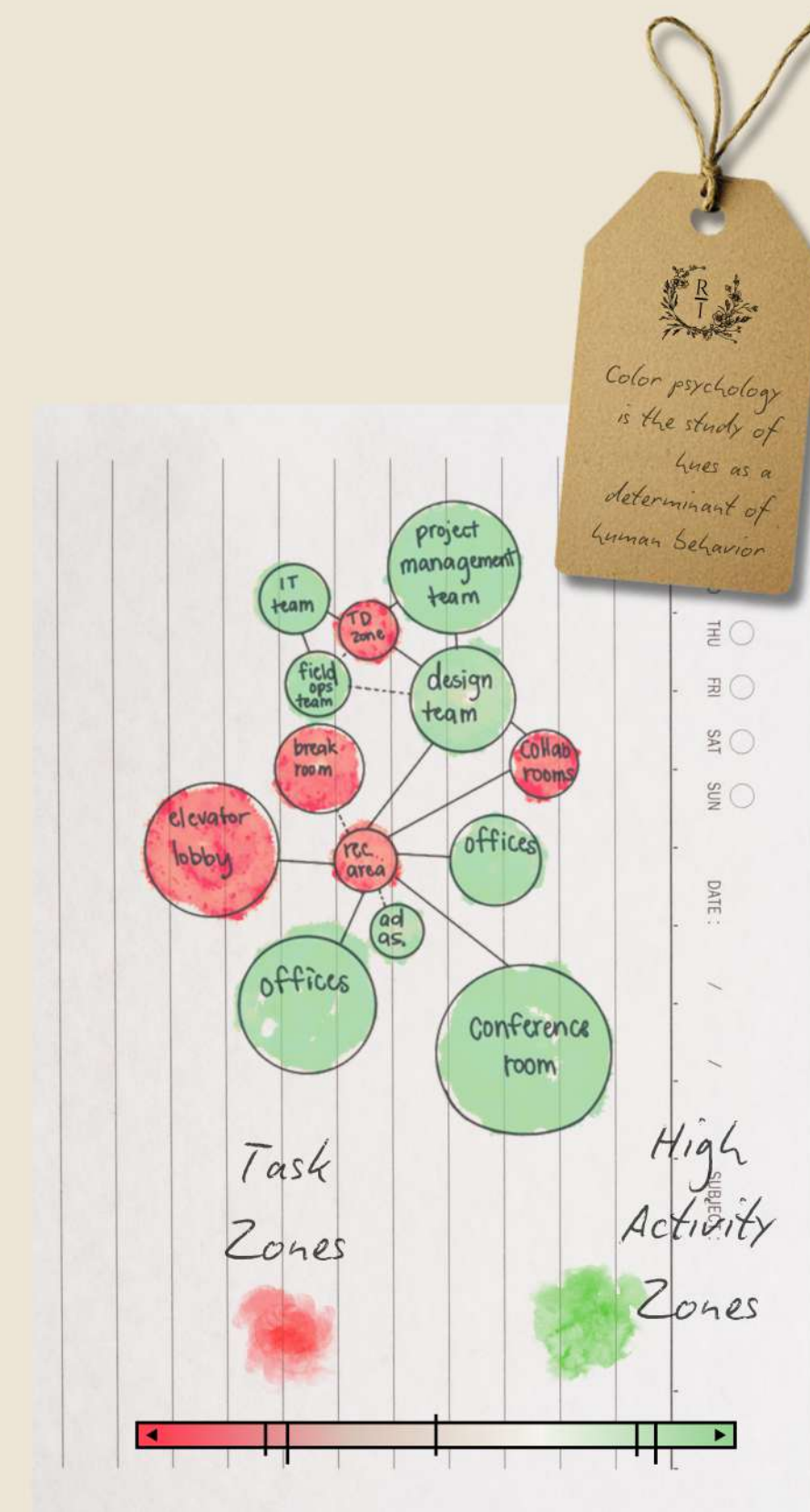


COLLABORATION BOOTHS

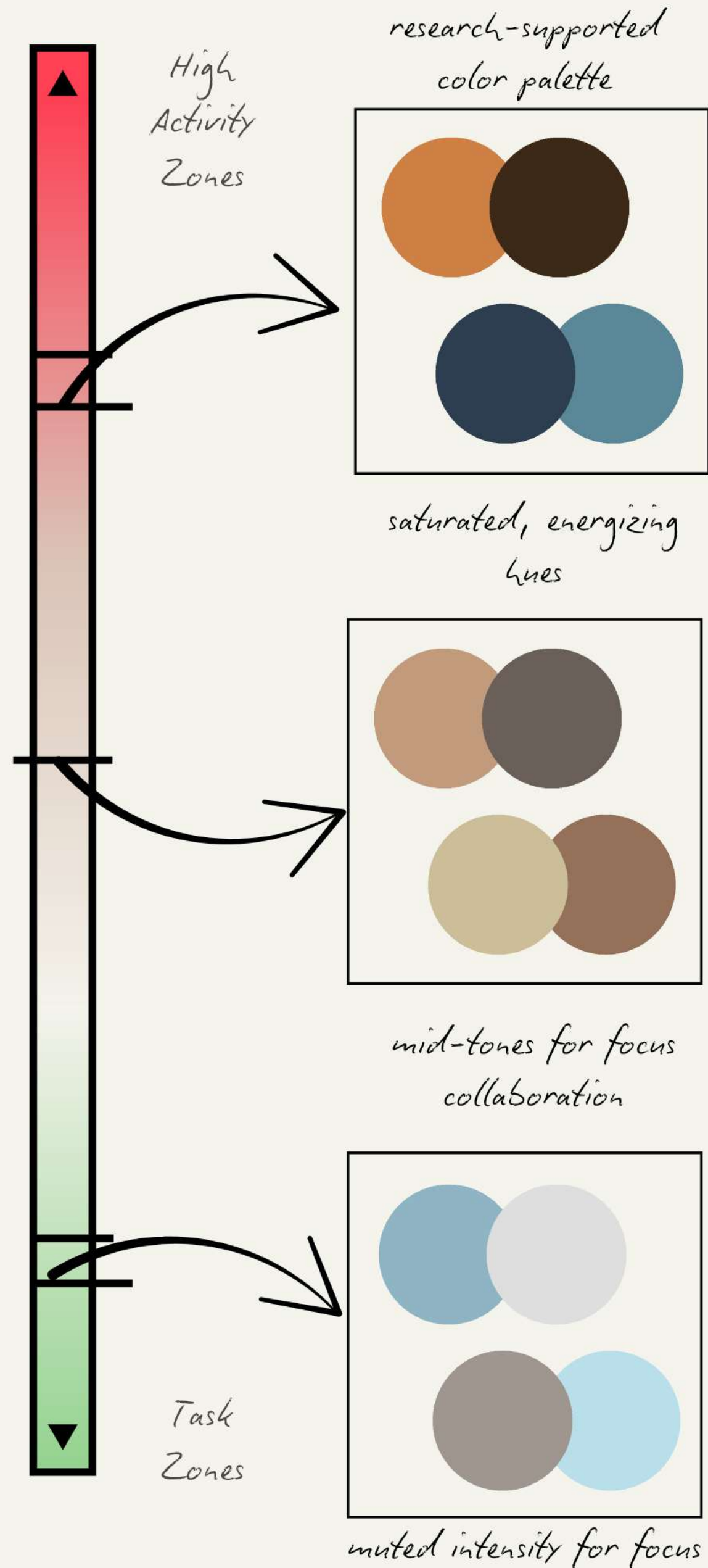
EVIDENCE - BASED DESIGN

For the Church Office Building project, I applied evidence-based design principles to enhance both functionality and well-being throughout the space. Drawing on research-supported color psychology, I strategically differentiated between high-activity zones and focused task zones using a balanced palette. Saturated hues like deep blues and burnt oranges energized collaboration areas and public walkways—tones proven to stimulate creativity and movement.

In contrast, muted variations of these colors, along with calming neutrals such as soft greys, matte blacks, and warm whites, were reserved for task zones to reduce visual fatigue and support concentration. This intentional use of color reinforced spatial hierarchy while aligning with the project's spiritual and professional tone.



PROCESS FOR FINAL REVIT RENDERING



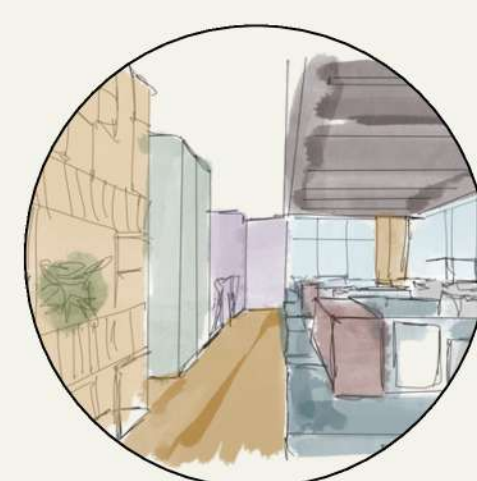
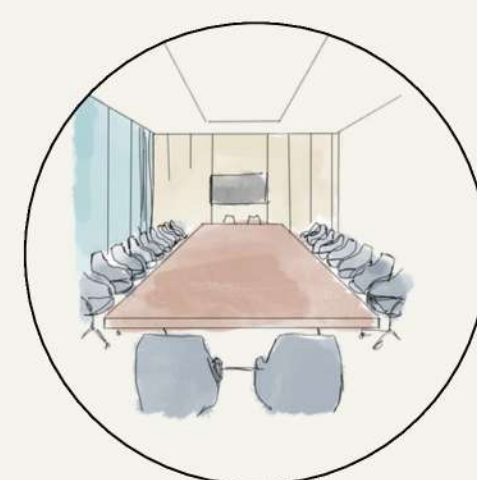
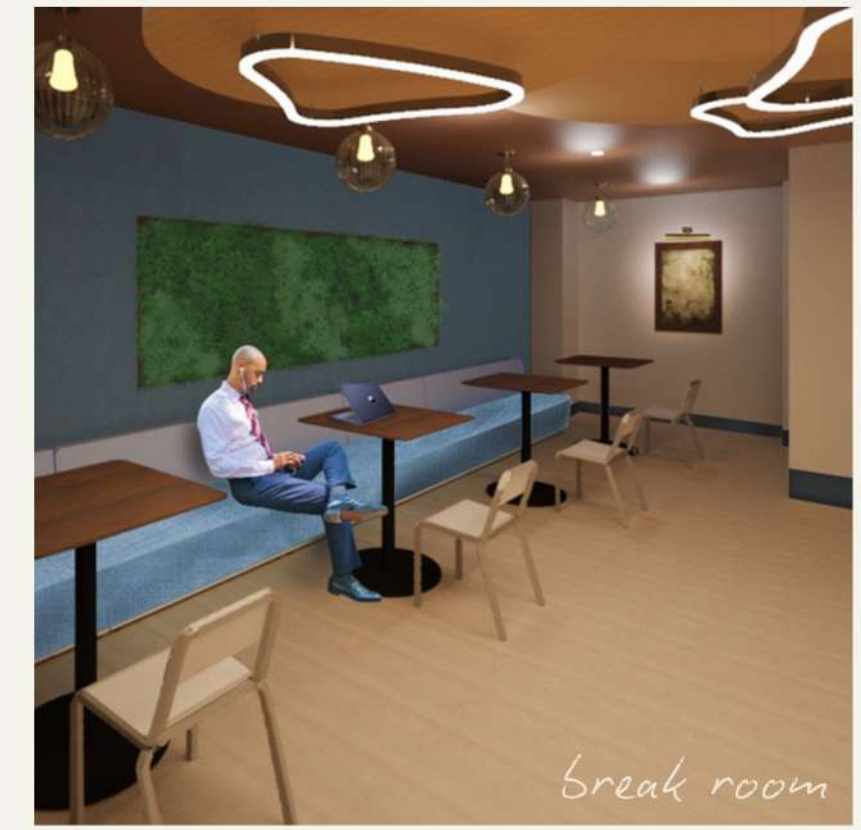
procreate concept sketch



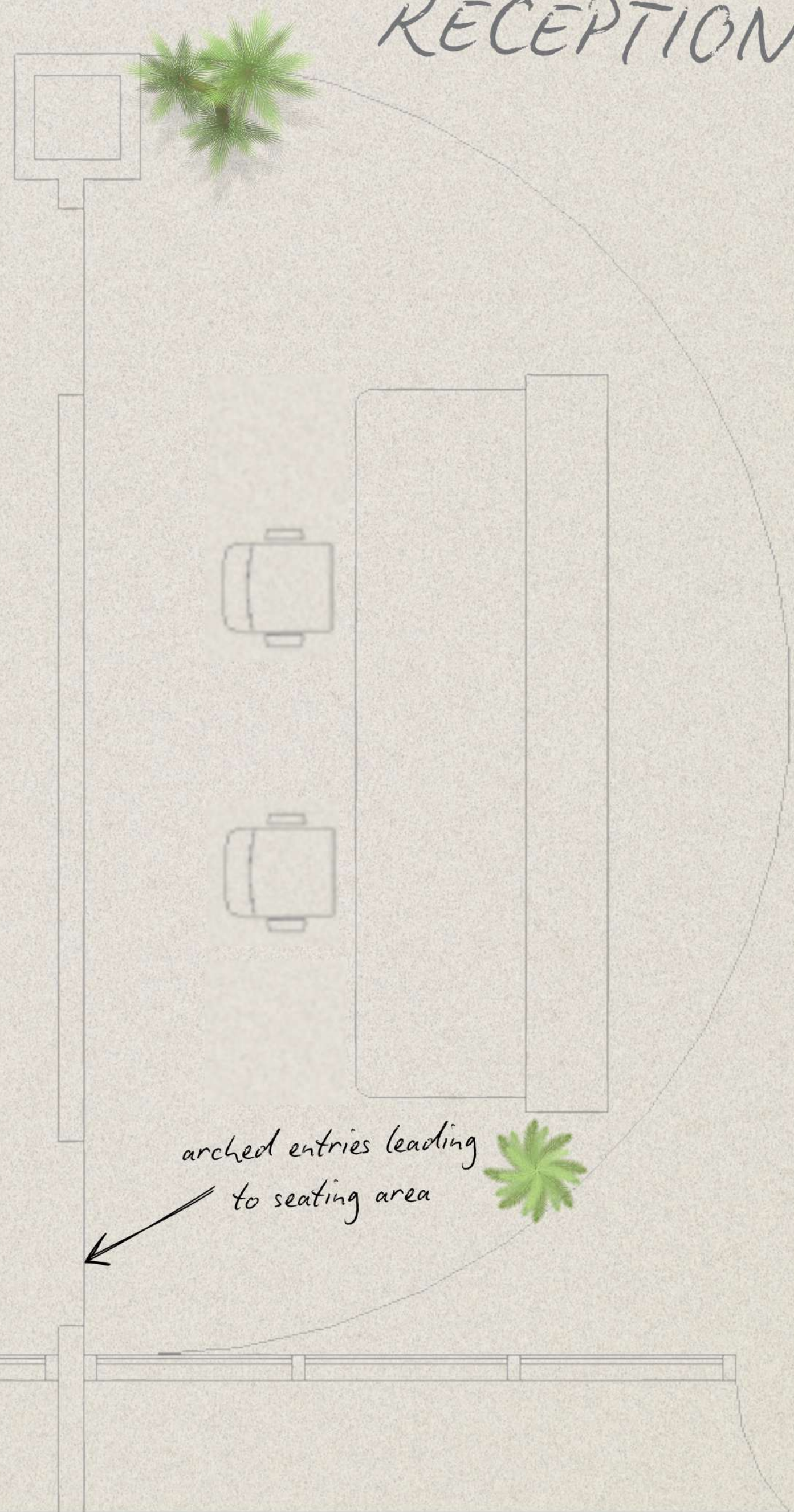
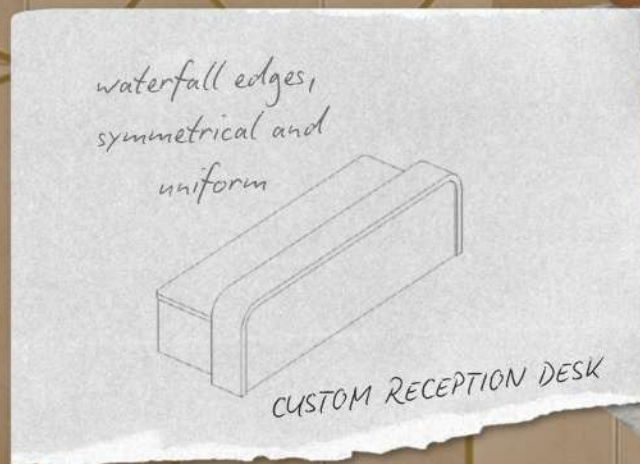
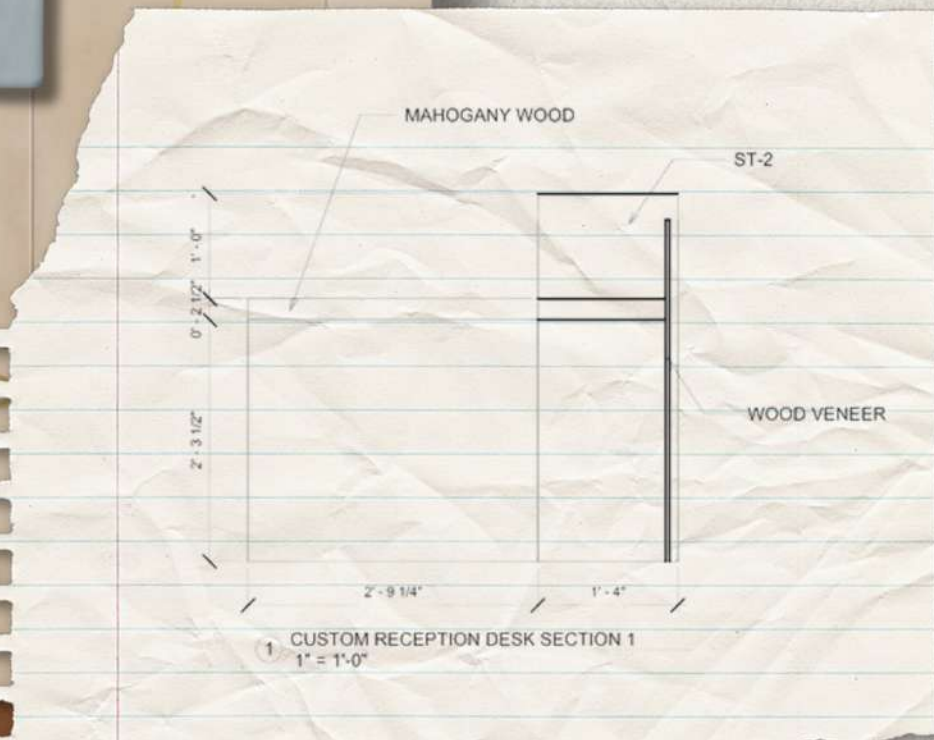
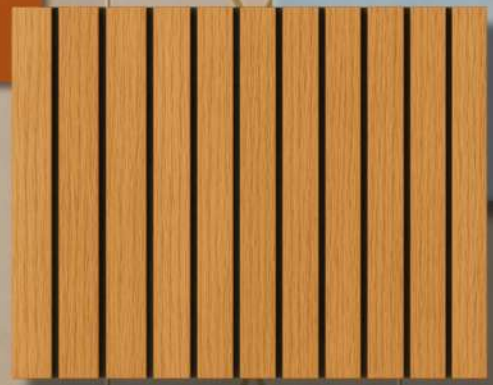
ai conceptual rendering



revit wireframe



RECEPTION



UNIVERSAL HOUSE



Nestled in Vernal, Utah, this residential project for a family of four was guided by the principle that good design should serve everyone. With the mother using a wheelchair, the home was crafted using universal design strategies—an approach that goes beyond accessibility to create spaces that are intuitive, comfortable, and functional for people of all ages and abilities. Thoughtfully widened hallways, zero-step entrances, multi-height surfaces, and seamless circulation pathways were just a few of the inclusive elements integrated throughout the space. In the words of designer Frank Chimero, “People ignore design that ignores people”—a philosophy that shaped every square foot of this welcoming, human-centered home.

VERNAL UTAH



*Revit Wireframe | Enscape
Lighting | Procreate Collage*



kitchen barstools
CRATE & BARRELL



living room side table
ARTICLE



dining room table
URBIA ELCOR



dining chair
STEVE SILVER



living room sofa
ARTICLE



desk
HOMARY



living room lounge chair
WEST ELM



master bedframe
POTTERY BARN





BEFORE PLAN

My design process starts with a deep understanding of the client's vision, needs, and lifestyle through collaborative consultations. I then translate those insights into thoughtful spatial planning, mood boards, and curated materials that balance function and beauty. If a client asks what style I design, I'll say—anything you desire. From classic elegance to modern minimalism, every detail is tailored to reflect your identity and elevate how you live or work. With clear communication and hands-on oversight, I bring each space to life with creativity, cohesion, and purpose.





Modeled in Revit | Rendered in Enscape



“THE **BEST ROOMS** HAVE
SOMETHING TO SAY
ABOUT **THE PEOPLE** WHO
LIVE IN THEM.”

– DAVID HICKS

Enhanced by ChatGPT



UNIVERSAL HOUSE REMODEL | DINING ROOM



TAYA RUSSELL

Interior design isn't just something Taya loves—it's how her brain naturally operates. She's the kind of person who walks into a room and immediately starts rearranging it in her head (and maybe in real life if you're not watching closely). For Taya, design is the perfect blend of everything she loves: the structure of math, the flow of sketching, the precision of technical detail, and the freedom of creativity.

She's equally at home refining lighting plans in CAD as she is doodling new furniture layouts on a napkin. When she's not deep in a 3D model or crafting material boards, you'll likely find her on the golf course, writing a fantasy novel, or daydreaming about her next design—always with one question in mind: How do I want people to feel when they walk in?

Whether it's cozy and calm or bold and dramatic, Taya believes good design tells a story. And she's here to help write it.



DESIGNER SKILLS & EXPERIENCE

WORK EXPERIENCE

Interior Design Intern | CCG | April 2025 - Present

- Maintained organized design libraries, sample inventory, and vendor catalogs
- Assisted in sourcing materials, finishes, and furnishings for residential and commercial projects
- Supported the preparation of client presentations and design proposals
- Researched current trends, materials, and design innovations for ongoing projects

First Grade Teacher's Aide | North Star Academy | Jan 2024 - April 2025

- Encourage students to develop productivity skills and personal growth by providing constructive feedback and guidance
- Initiate collaboration with 10+ teachers and administrators to prepare lesson plans and quality education for students based on individual needs and goals
- Exhibit initiative to teach and develop 10+ weekly plans and coursework, periodically without hesitation or notice

EDUCATION

Ensign College | SLC, Utah

Associate of Applied Science in Interior Design

VOLUNTEER WORK

Utah FBLA State Officer | Future Business Leaders of America | Jan 2022 - Jan 2023

- Collaborated with other officers and Board of Directors in five monthly planning meetings
- Delivered awards and speeches to over 129 FBLA chapters at Utah FBLA's State conference
- Organized, scheduled, and delivered 3 informational business-centered workshops for Fall Leadership Conferences

TECHNICAL SKILLS

- Revit
- AutoCAD
- Photoshop
- Excel Spreadsheets
- Illustrator
- Enscape

PERSONAL SKILLS

- Graphic Design
- Collaborative Leadership
- Creative Development
- Engaging Public Speaker
- Teamwork Oriented
- Time Management

