

AM

INTERIORS

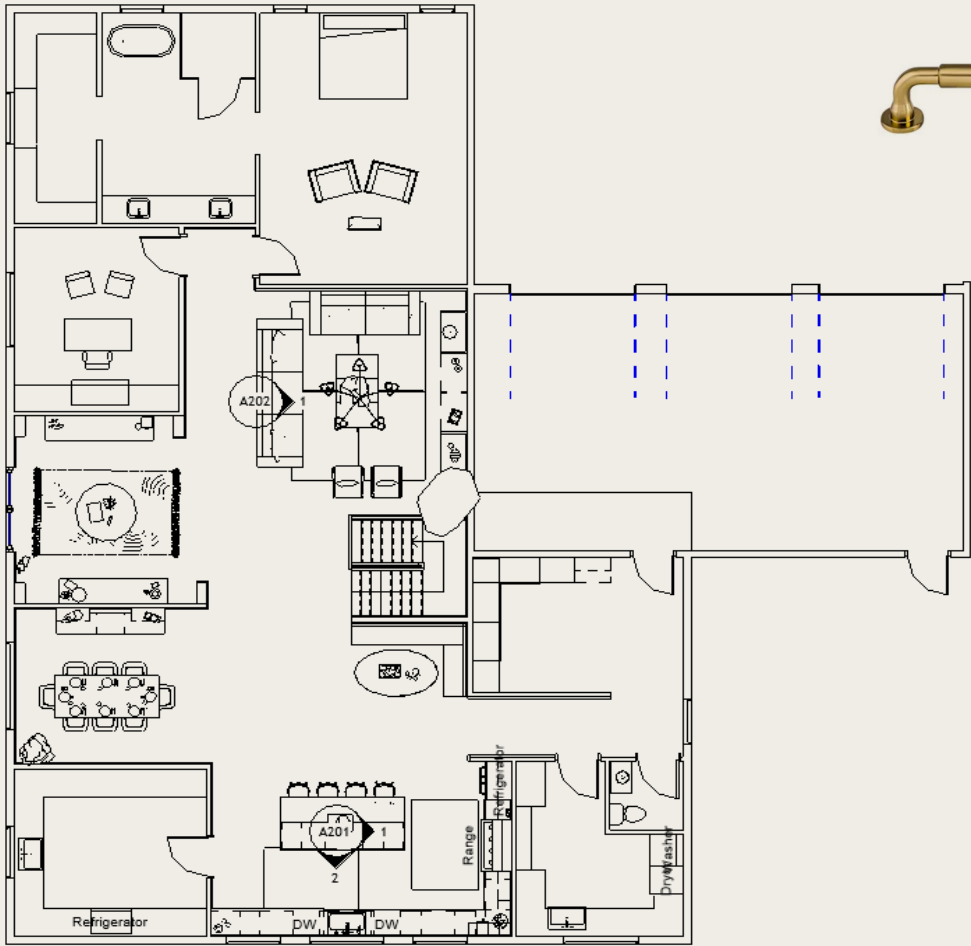
Ally Matheson
Design Portfolio



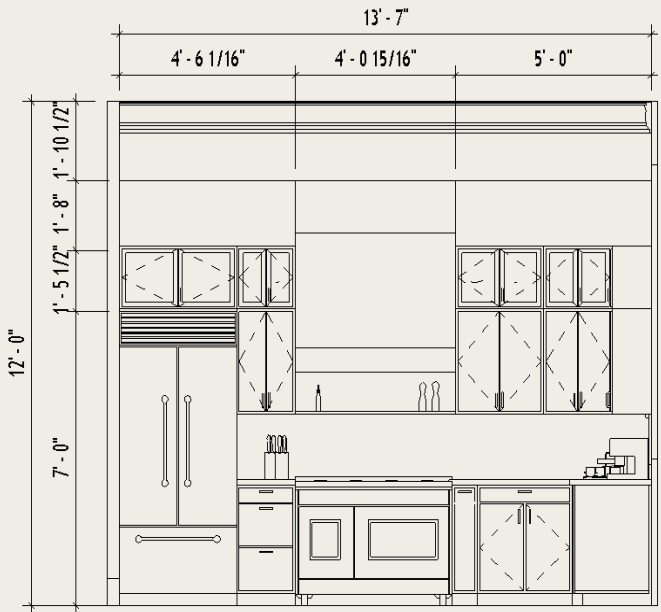
Bountiful House

This home remodel in Bountiful, Utah, thoughtfully expands the floor plan to create a bright and open living space that embraces natural light at every turn. The redesign focuses on establishing a seamless flow of traffic, guiding movement effortlessly from the entryway through the great room, breakfast nook, and kitchen. Elegant and timeless finishes throughout the space lend a sophisticated and enduring appeal, combining classic design with modern comfort. The open layout not only enhances the home's functionality but also fosters a warm and inviting atmosphere, making it perfect for both everyday living and entertaining.

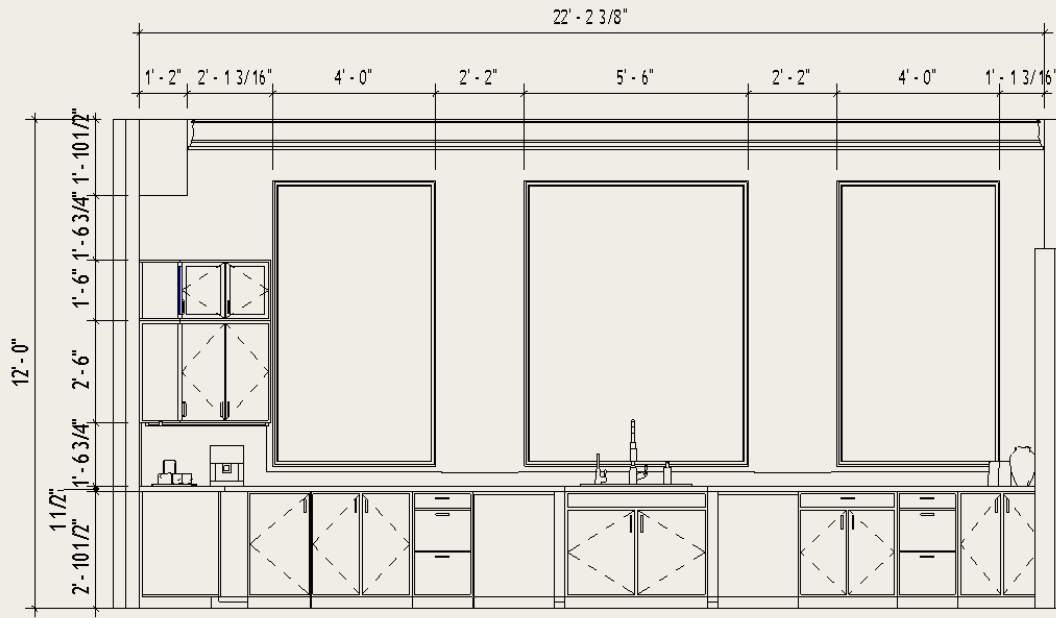
Kitchen



1 OVERALL FLOOR PLAN
1/8" = 1'-0"



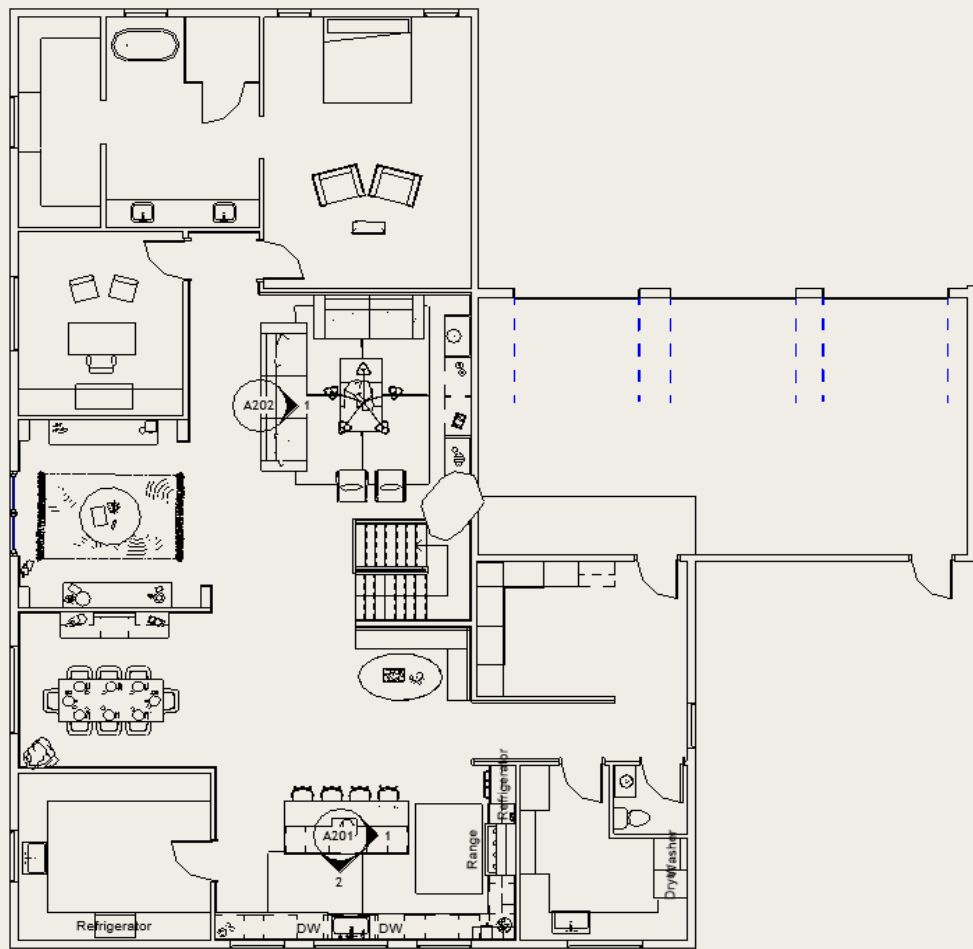
1 KITCHEN NORTH ELEVATION
1/4" = 1'-0"



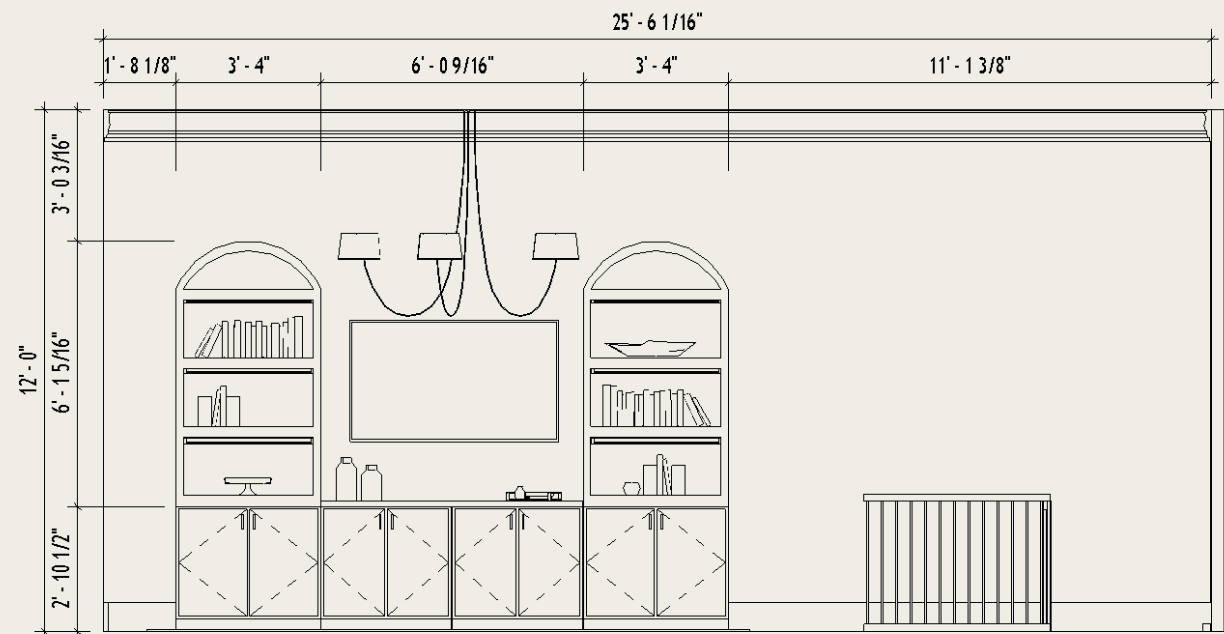
2 KITCHEN EAST ELEVATION
1/4" = 1'-0"



Great Room



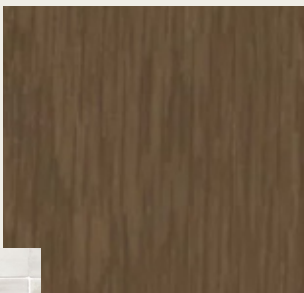
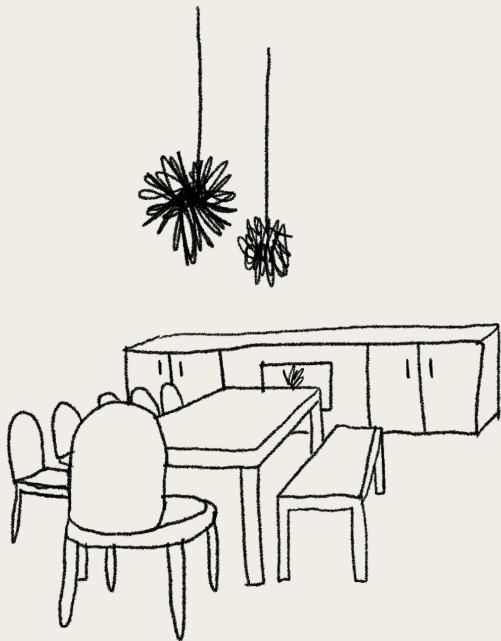
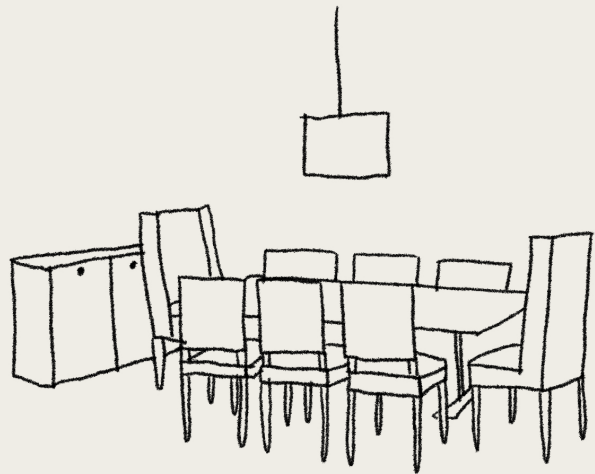
1 OVERALL FLOOR PLAN
1/8" = 1'-0"



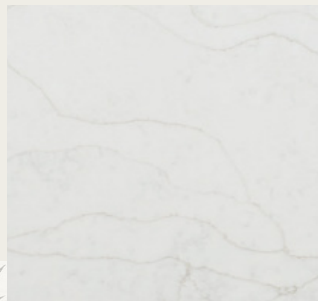
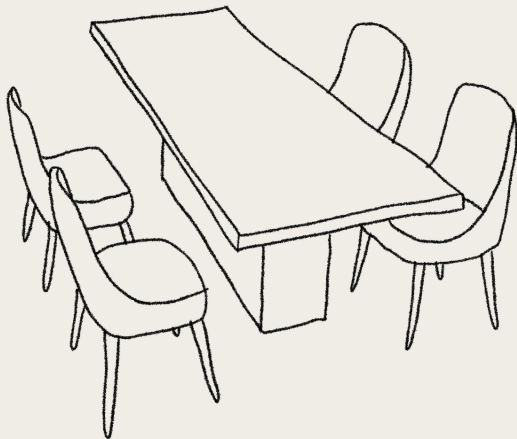
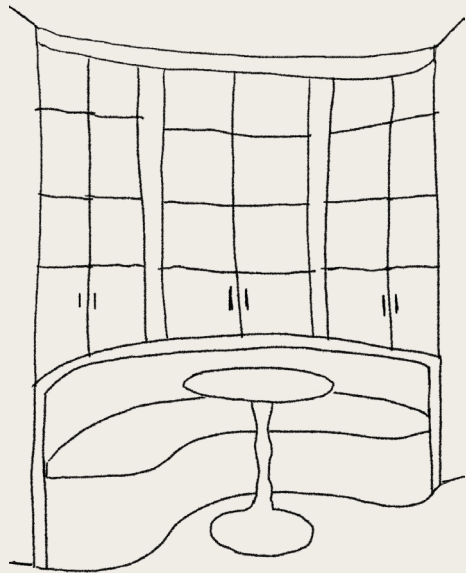
1 GREAT ROOM ELEVATION
1/4" = 1'-0"



Dining Room



Breakfast Nook



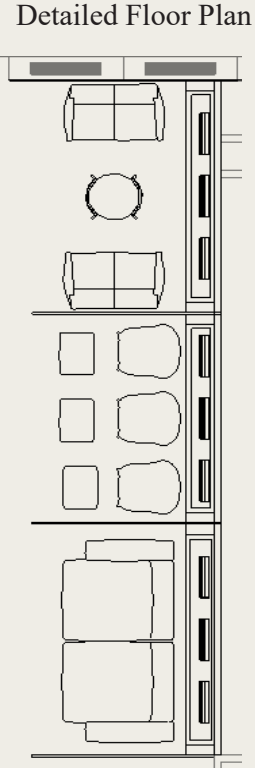
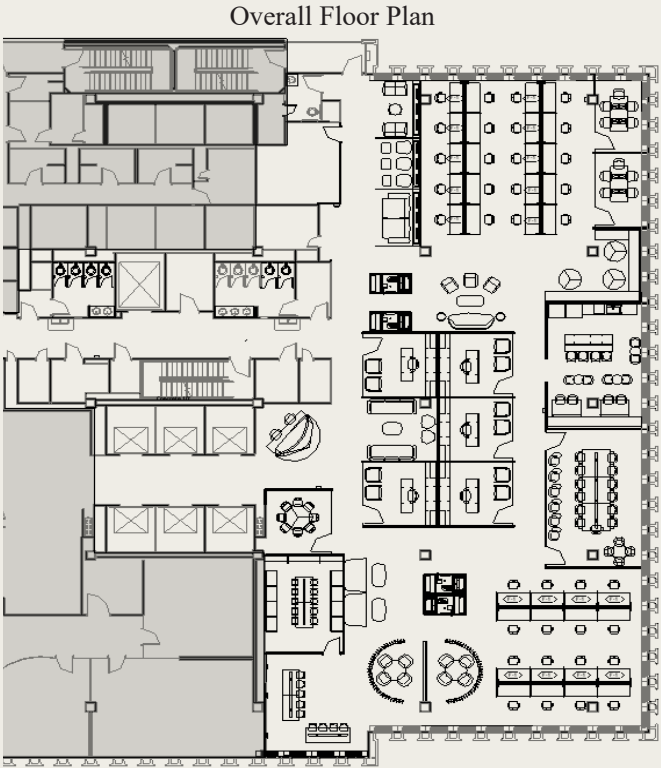
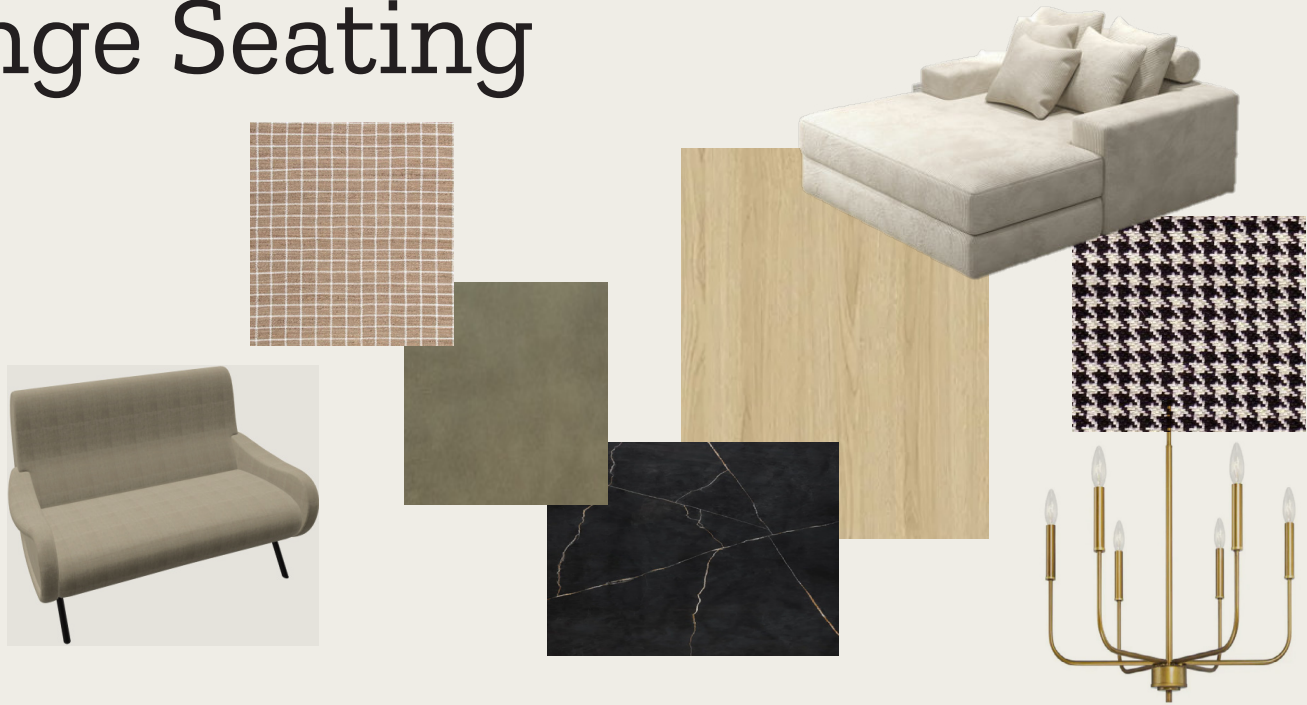




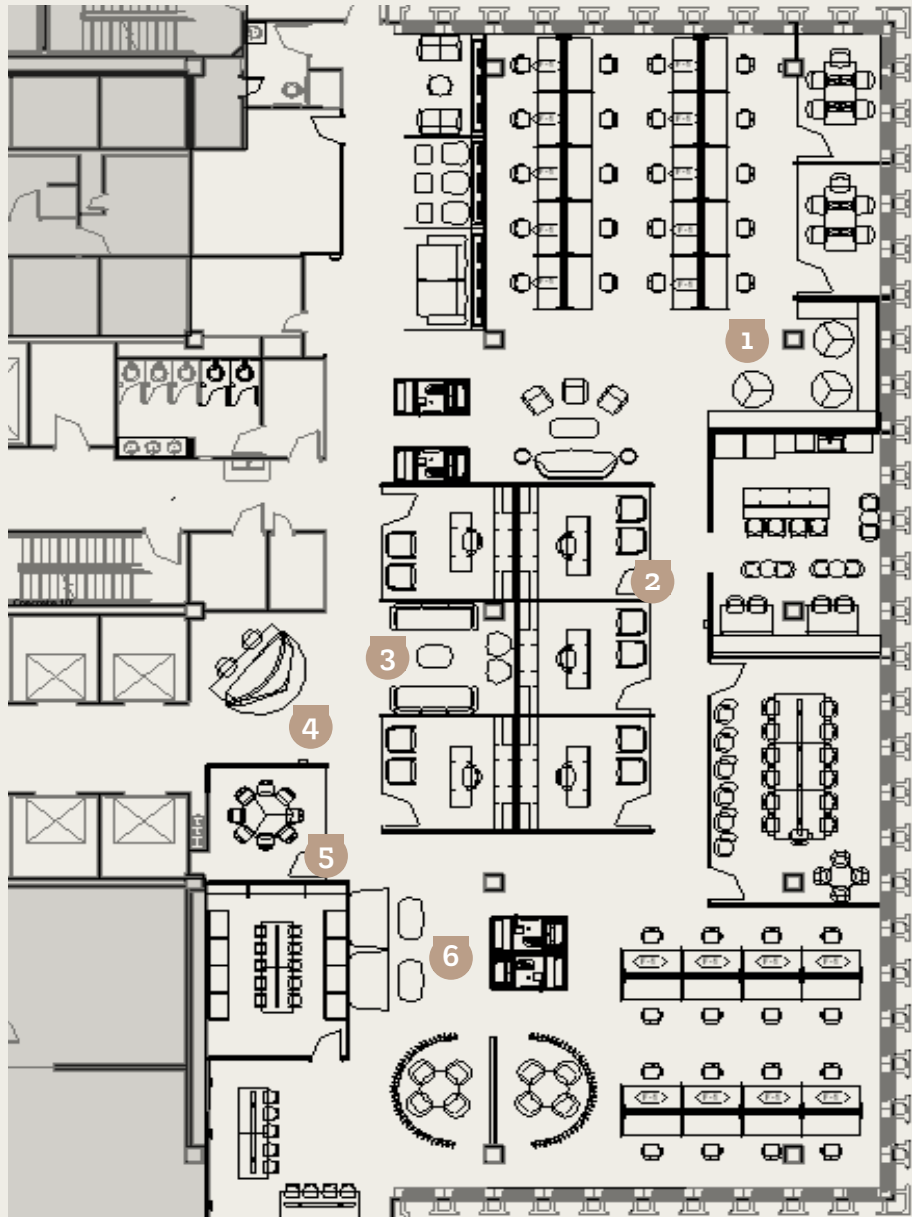
COB 7th Floor

The 7th-floor remodel of the church office building was designed to create a warm, resimercial atmosphere that feels welcoming and less like a traditional office. Ample natural light fills each room, enhancing the inviting ambiance throughout the space. The design incorporates a variety of open meeting and collaborative areas to encourage teamwork and connection, alongside private offices, small meeting rooms, cubicle spaces, and a comfortable waiting area. Additional amenities include a well-appointed break room and a front desk that blends seamlessly into the homely environment. Every material throughout the space was selected with purpose, balancing functionality and comfort to foster a productive yet warm workspace.

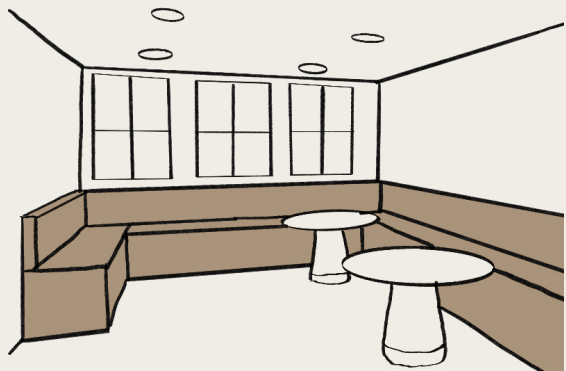
Lounge Seating



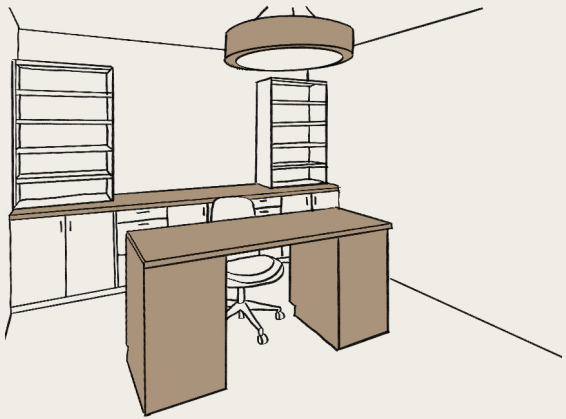
Sketches



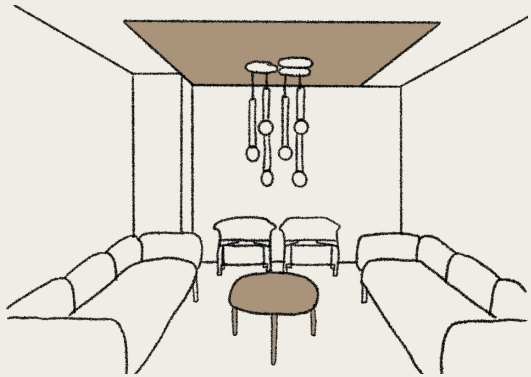
Overall Floor Plan



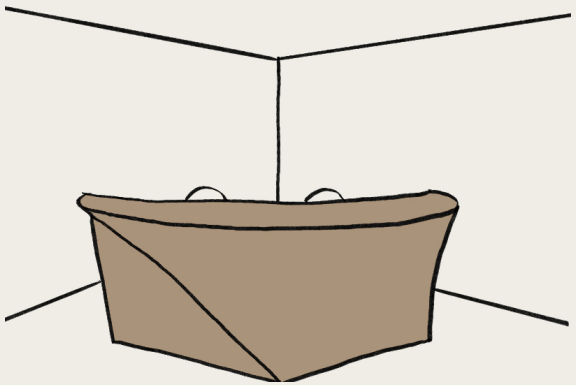
1 Seating Area



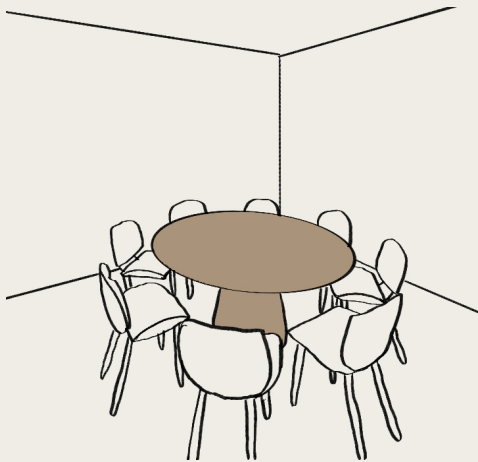
2 Office



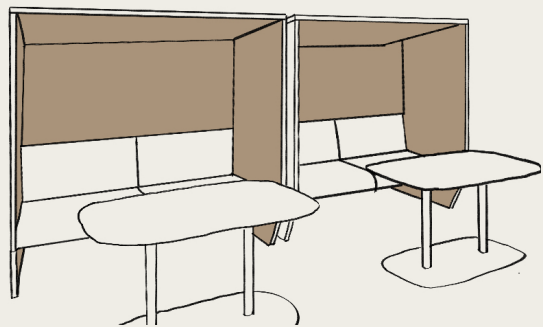
3 Waiting Room



4 Reception Desk

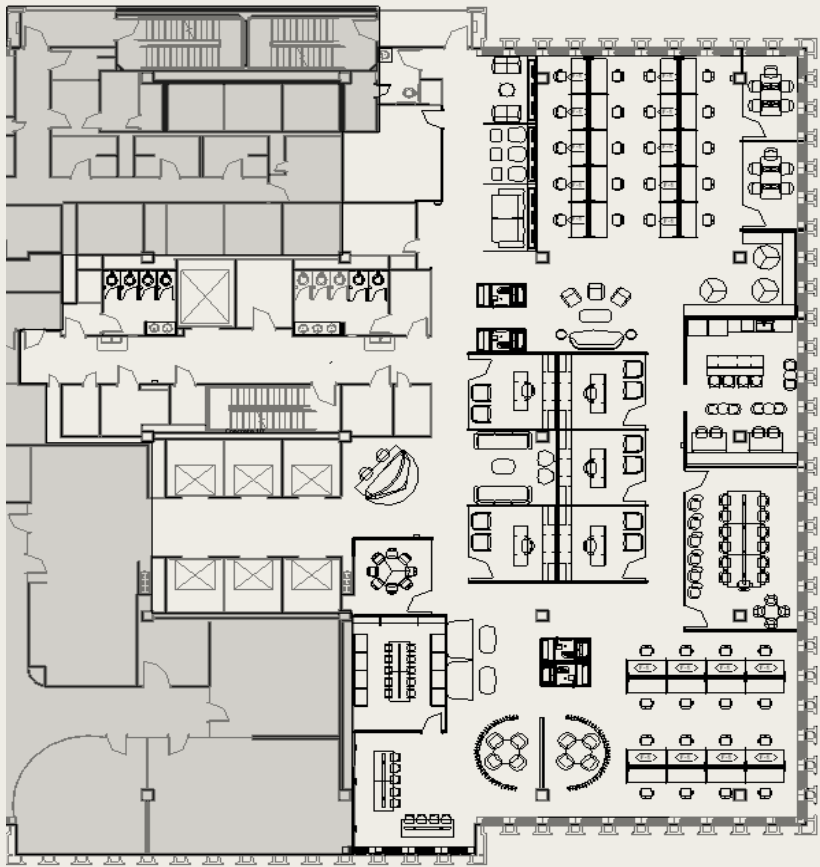


5 Meeting Room

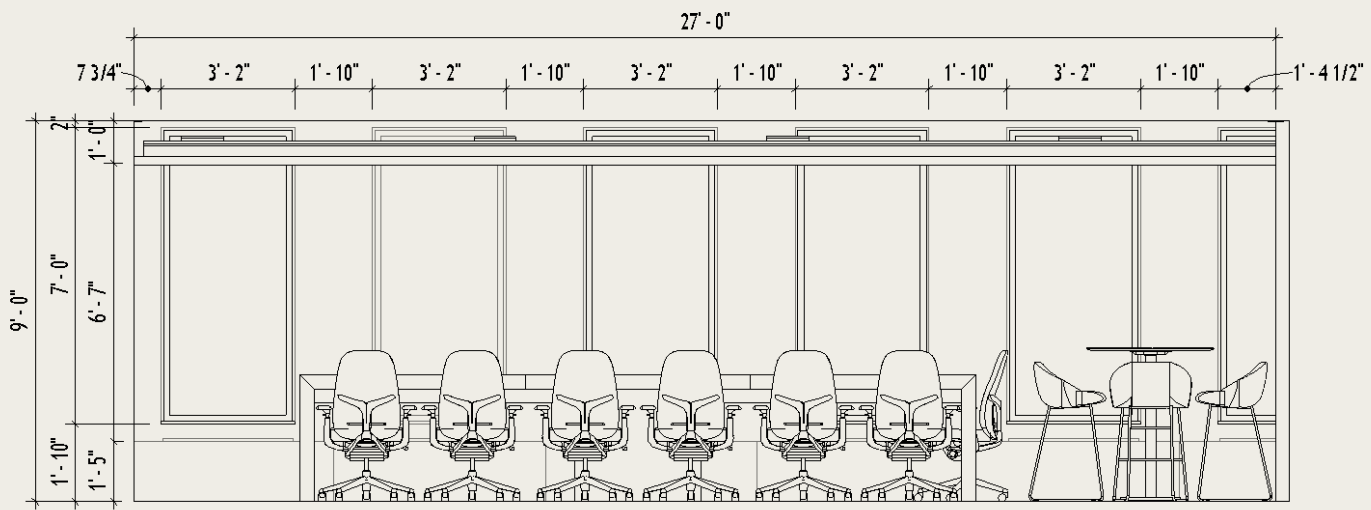
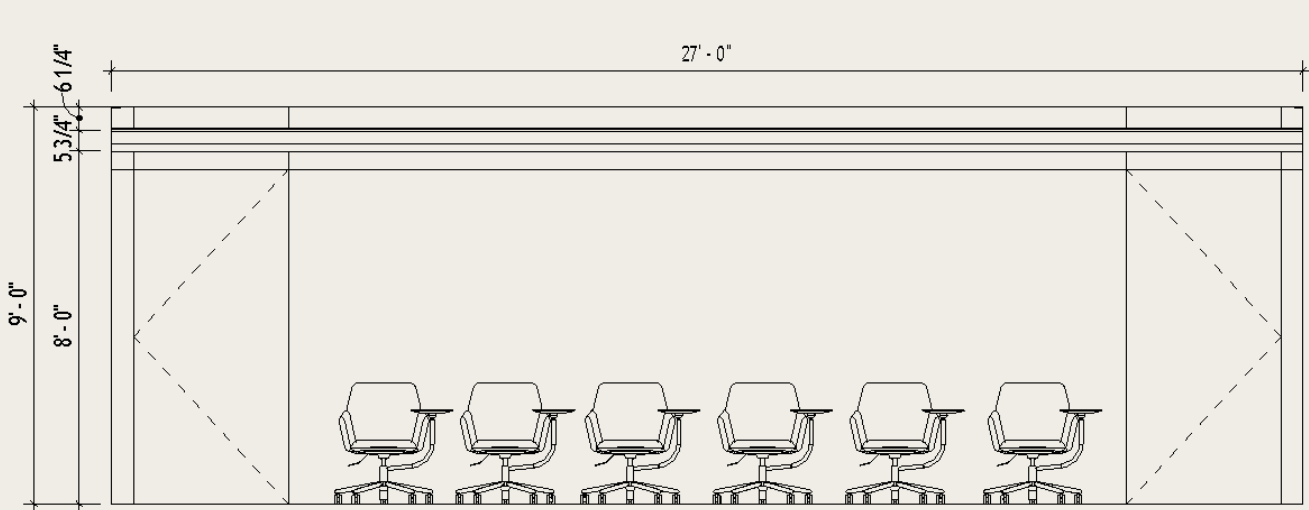


6 Hubs

Conference Room



Overall Floor Plan



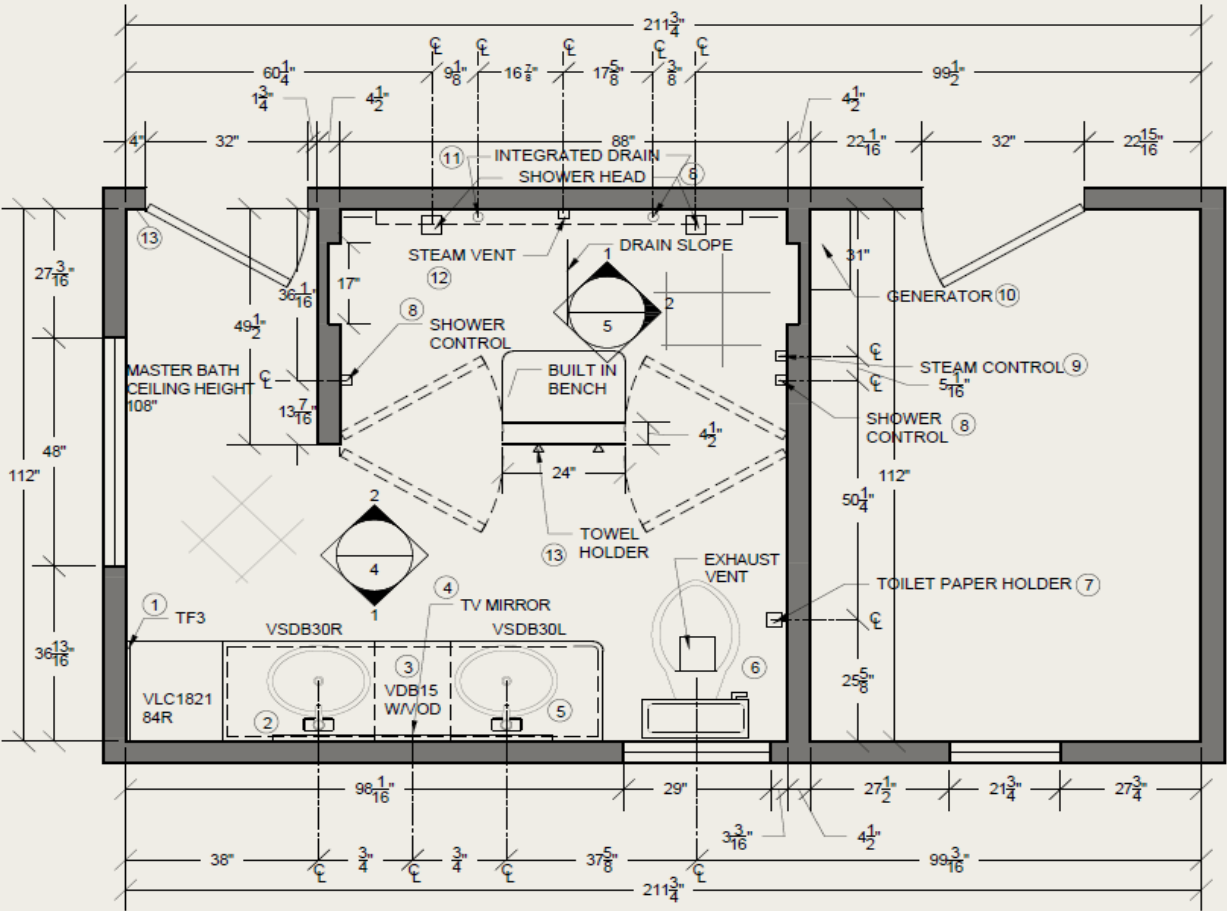
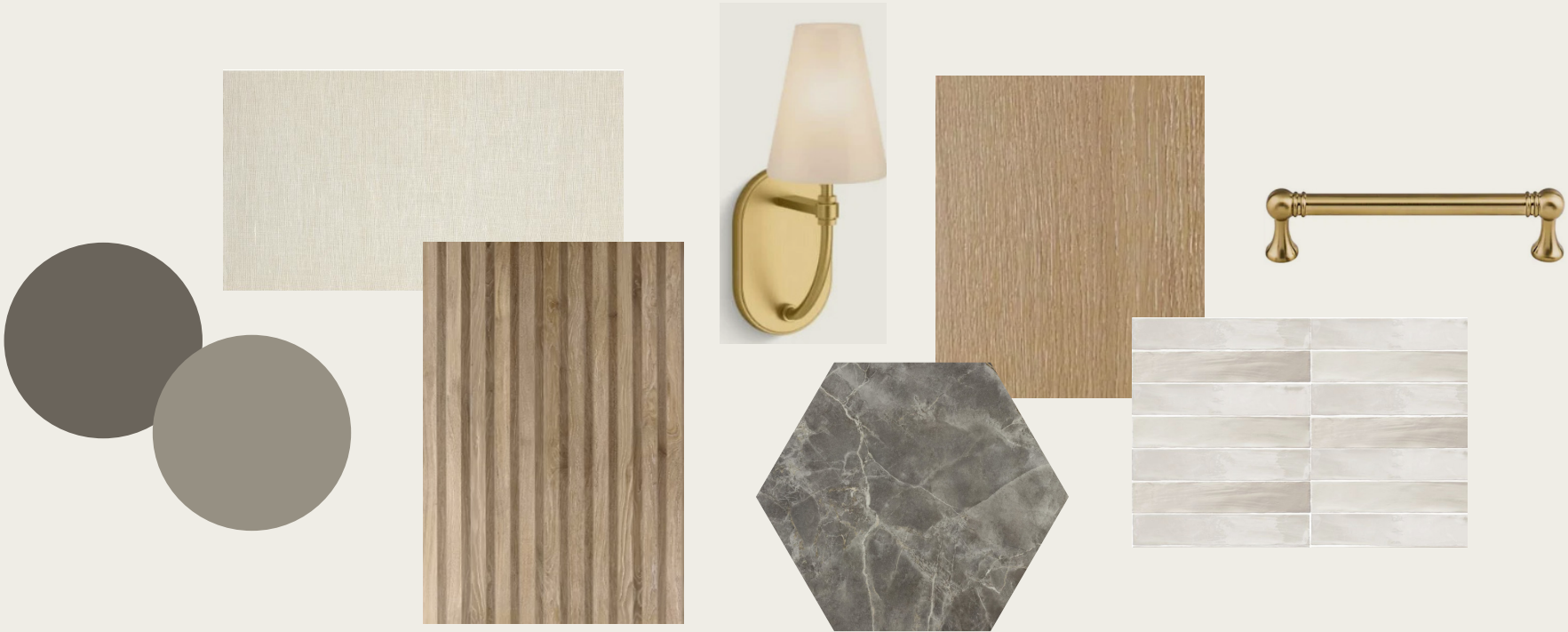




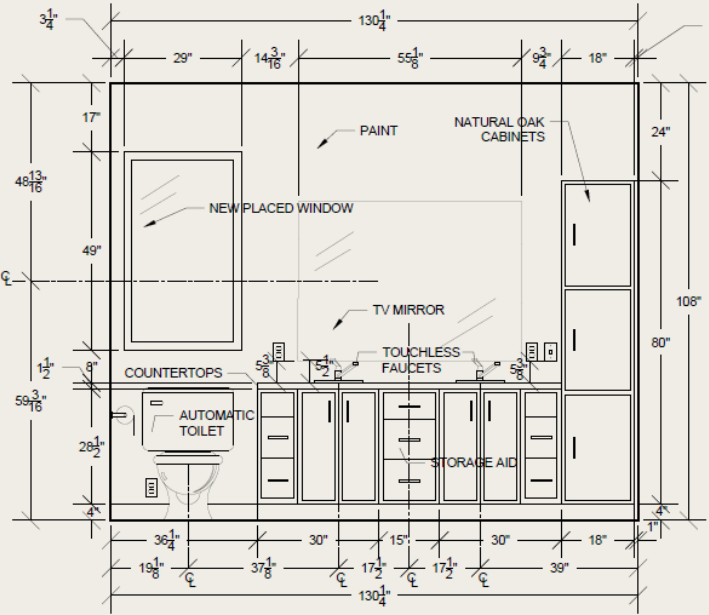
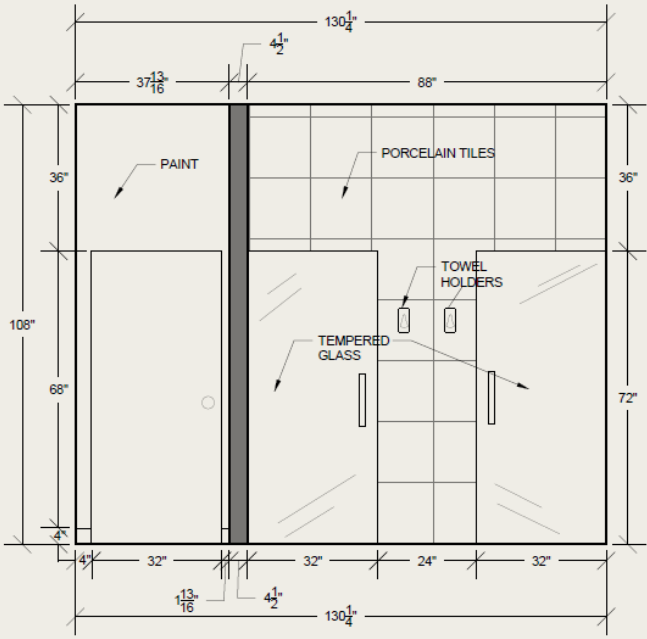
NKBA Bathroom Remodel

The NKBA bathroom remodel transforms a once traditional Tuscan-inspired space into a fresh, modern design, seamlessly aligning with the updated aesthetic the client was wanting for their space. Featuring warm oak cabinets that bring a natural, inviting touch, the remodel incorporates bold, contrasting statement piece countertops and integrated sinks that elevate the overall look. The spacious two-shower-head shower adds a spa-like luxury, while the double sink vanity enhances functionality. This remodel creates a serene and spacious retreat, perfectly balancing the charm of modern with elegant design elements to deliver both style and improved usability.

NKBA Bathroom



Overall Floor Plan





AM

INTERIORS

Thank you!

Ally Matheson

allylola10@gmail.com (435)-669-5878