



*Savannah Labrum*  
*Interior Design Portfolio*

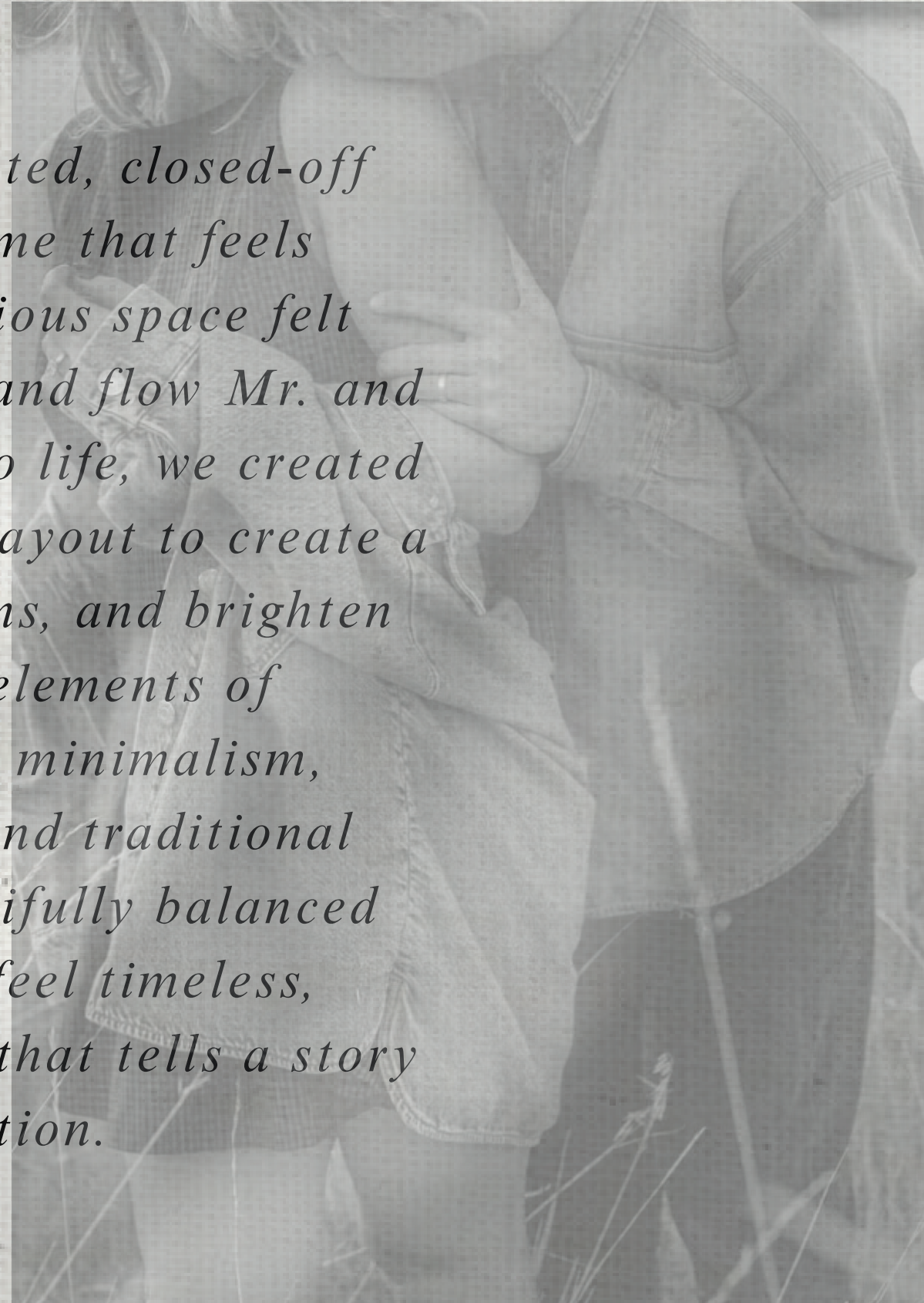




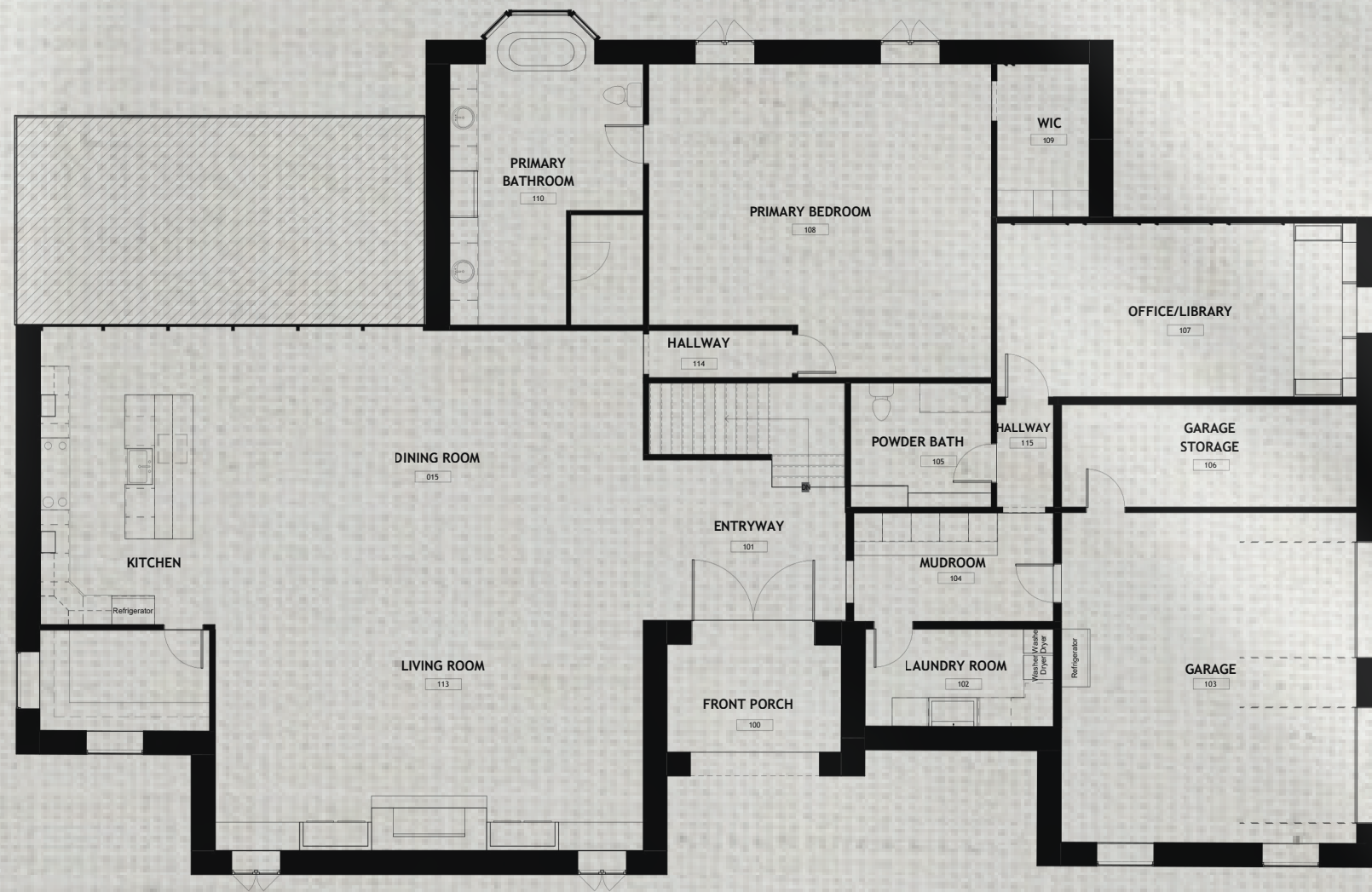
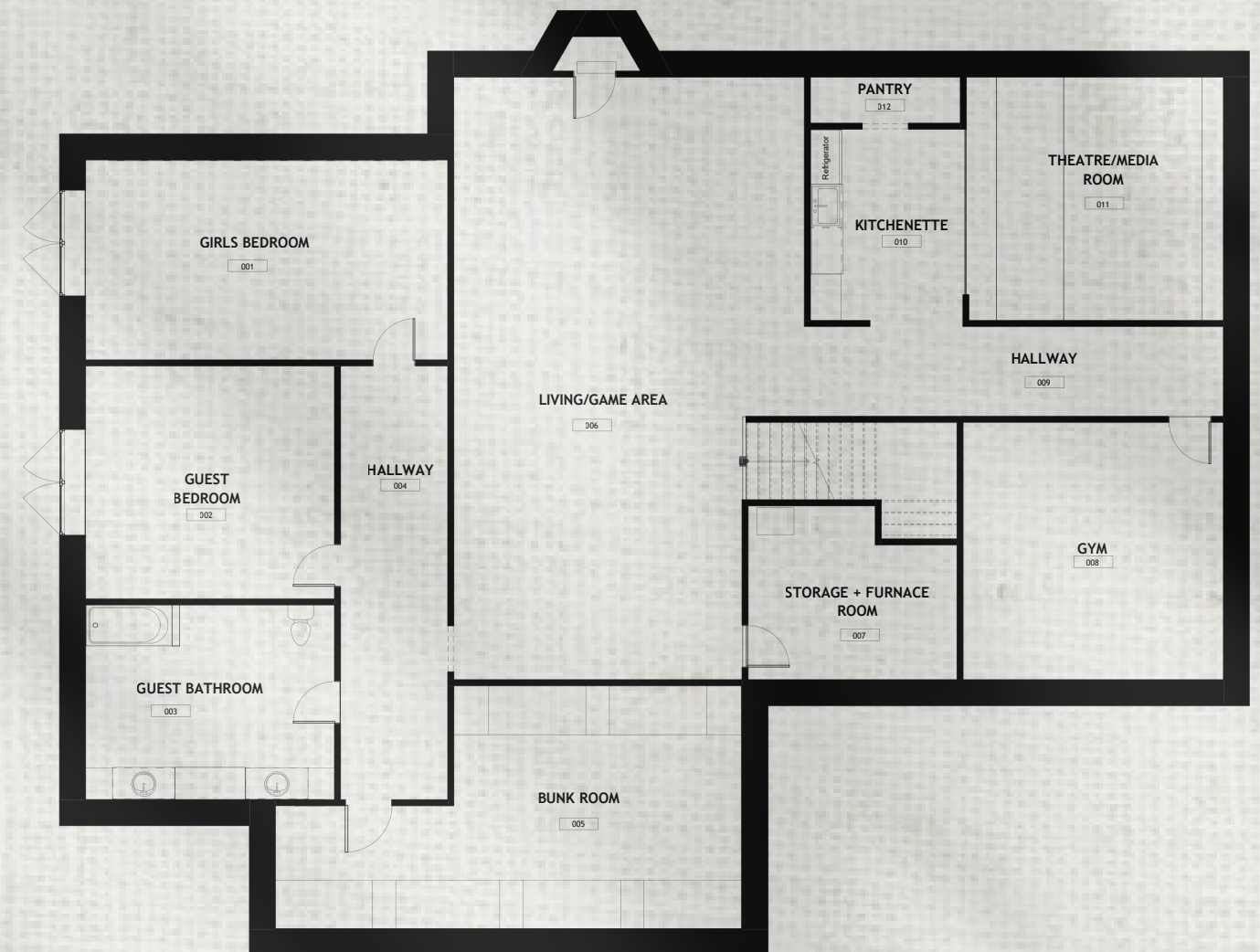




*This project reimagines an outdated, closed-off space into a warm, inviting home that feels functional and stylish. The previous space felt confined and lacked the character and flow Mr. and Mrs. Anderson desire. To bring it to life, we created a sense of openness, reworked the layout to create a seamless connection between rooms, and brighten the space. This home blends elements of transitional elegance with cozy minimalism, eclectic charm, rustic warmth, and traditional touches. The result being a beautifully balanced space, thoughtfully crafted to feel timeless, personal, and welcoming - a home that tells a story of comfort and connection.*





*Main Level Floor Plan**Lower Level Floor Plan*



*Primary Bedroom*



*Mudroom*



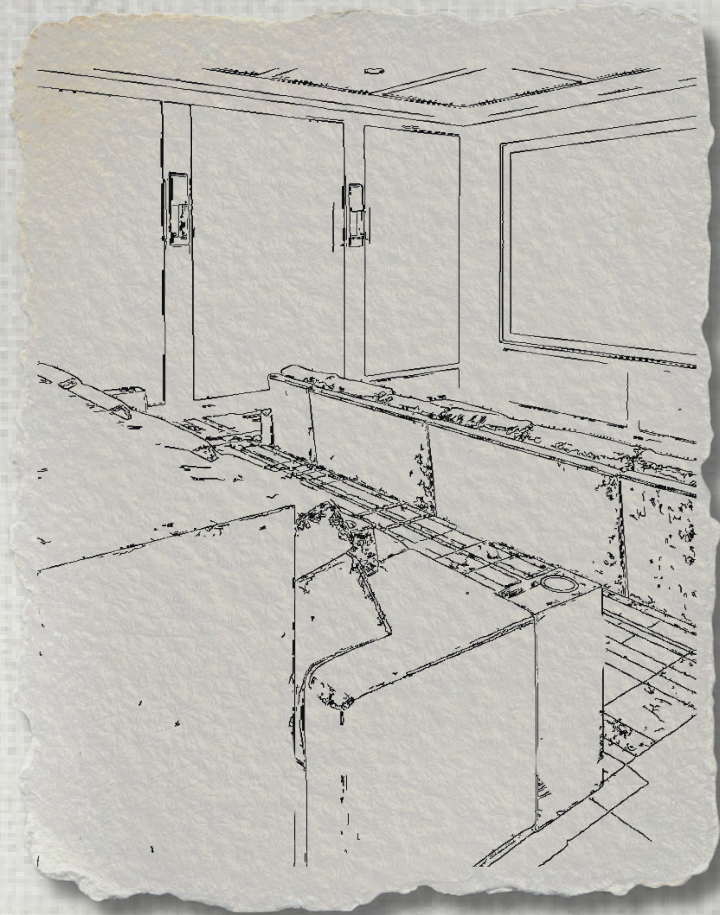
*Kitchenette*



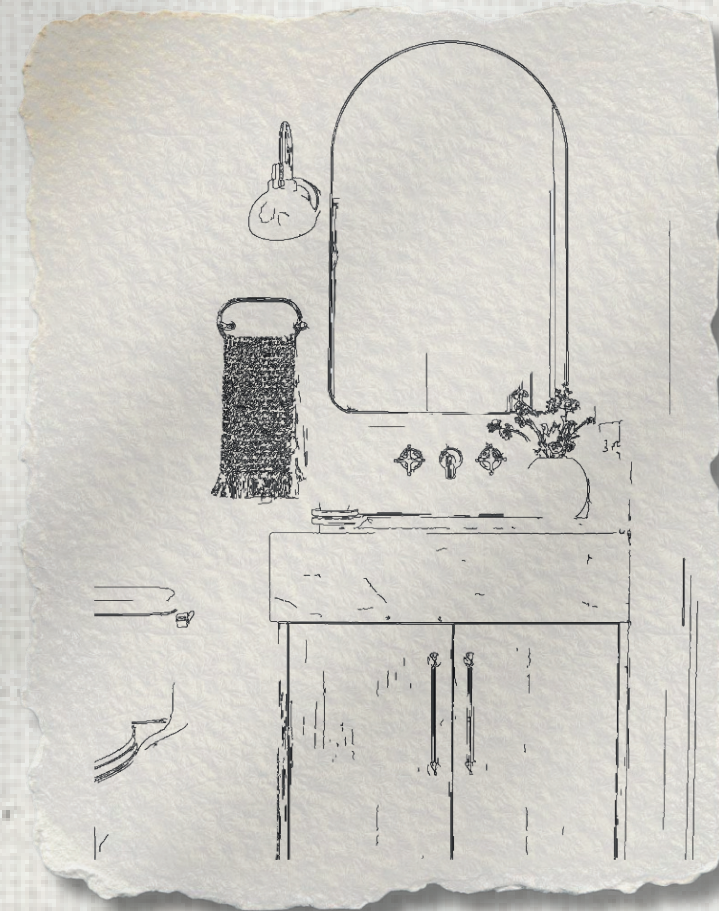








*Theatre Room*

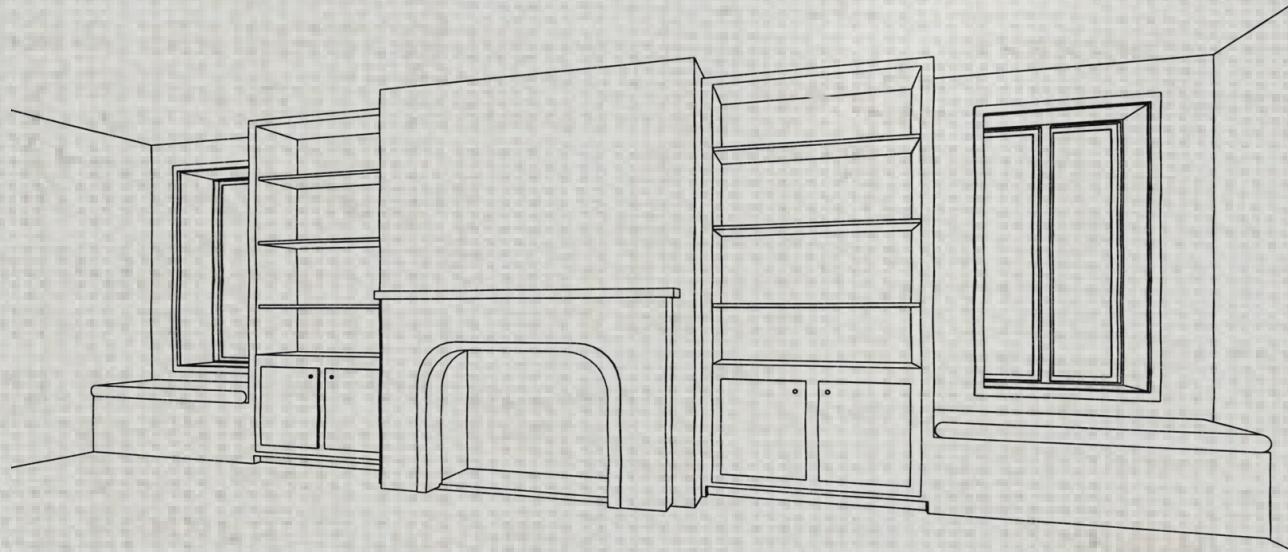


*Powder Bathroom*

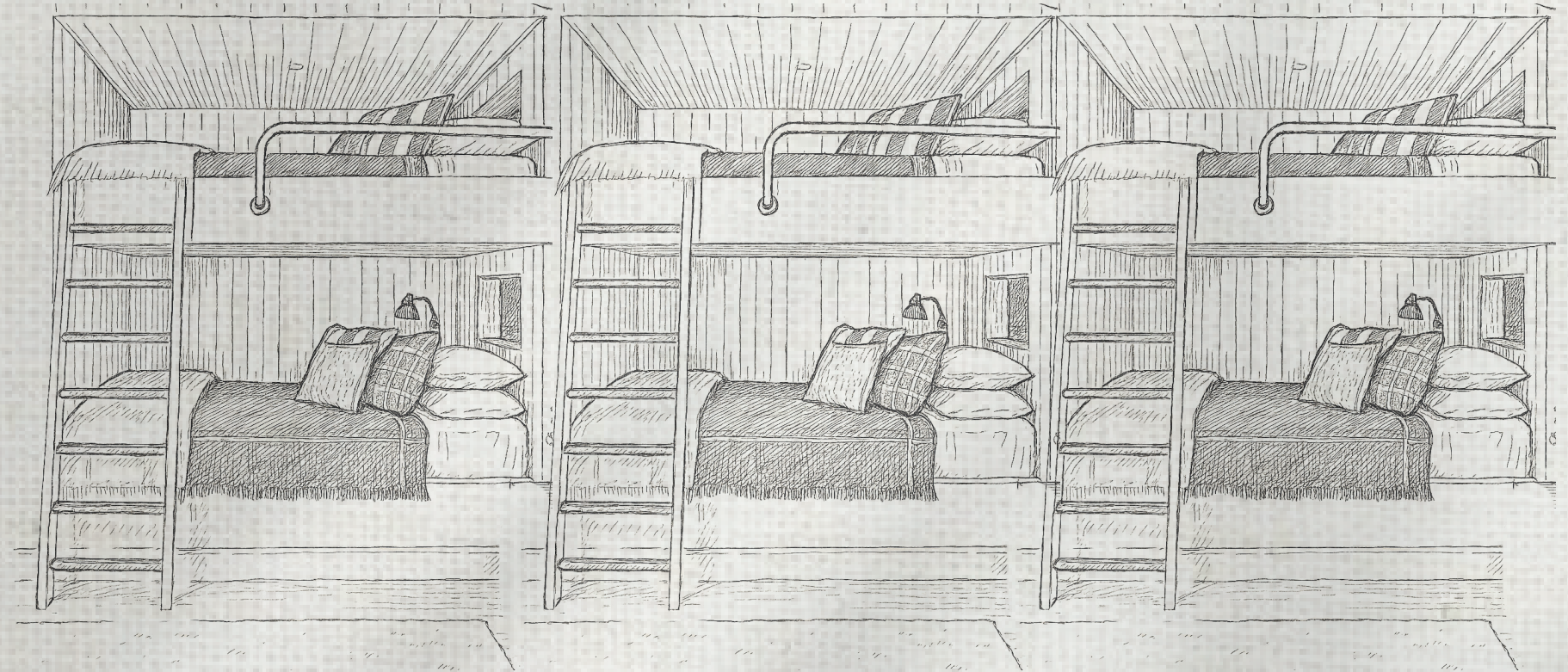












Iron Steps & Railings



Light Fixture



Bedding



Decorative Pillow

White Oak  
Tongue & Groove

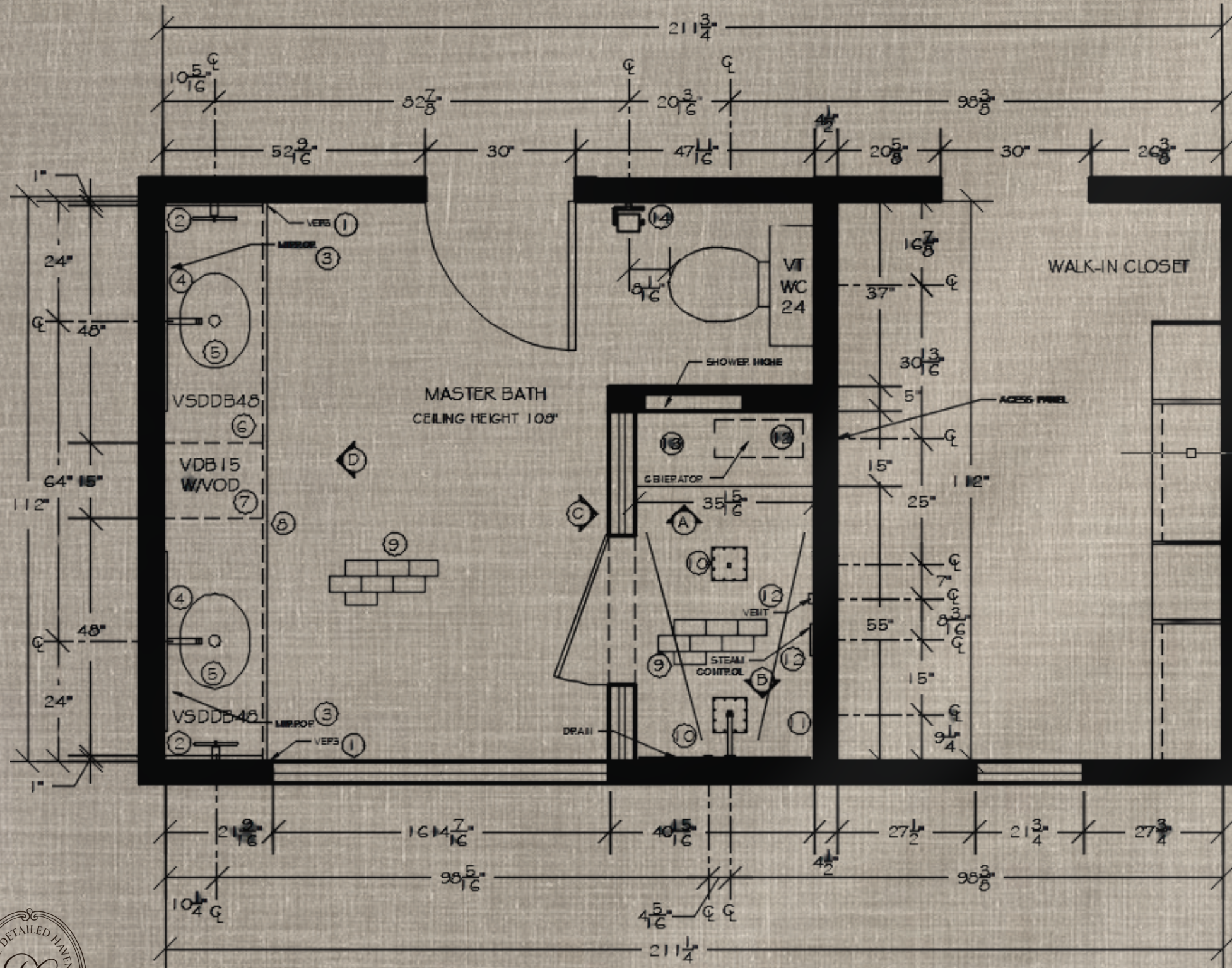


## *Orchard Family Bathroom Remodel*

*When the Orchard family moved into their older home, they wanted to make each space feel like their own. With a love for travel and a recent trip to Tuscany fresh in their minds, they decided to turn their primary bathroom into a relaxing retreat. The design takes cues from Tuscany's timeless charm — warm stone textures, natural materials, and layered patterns — and brings that same sense of comfort and elegance into their daily routine. The result is a space that feels both personal and inspired, blending global influence with the intimacy of home.*







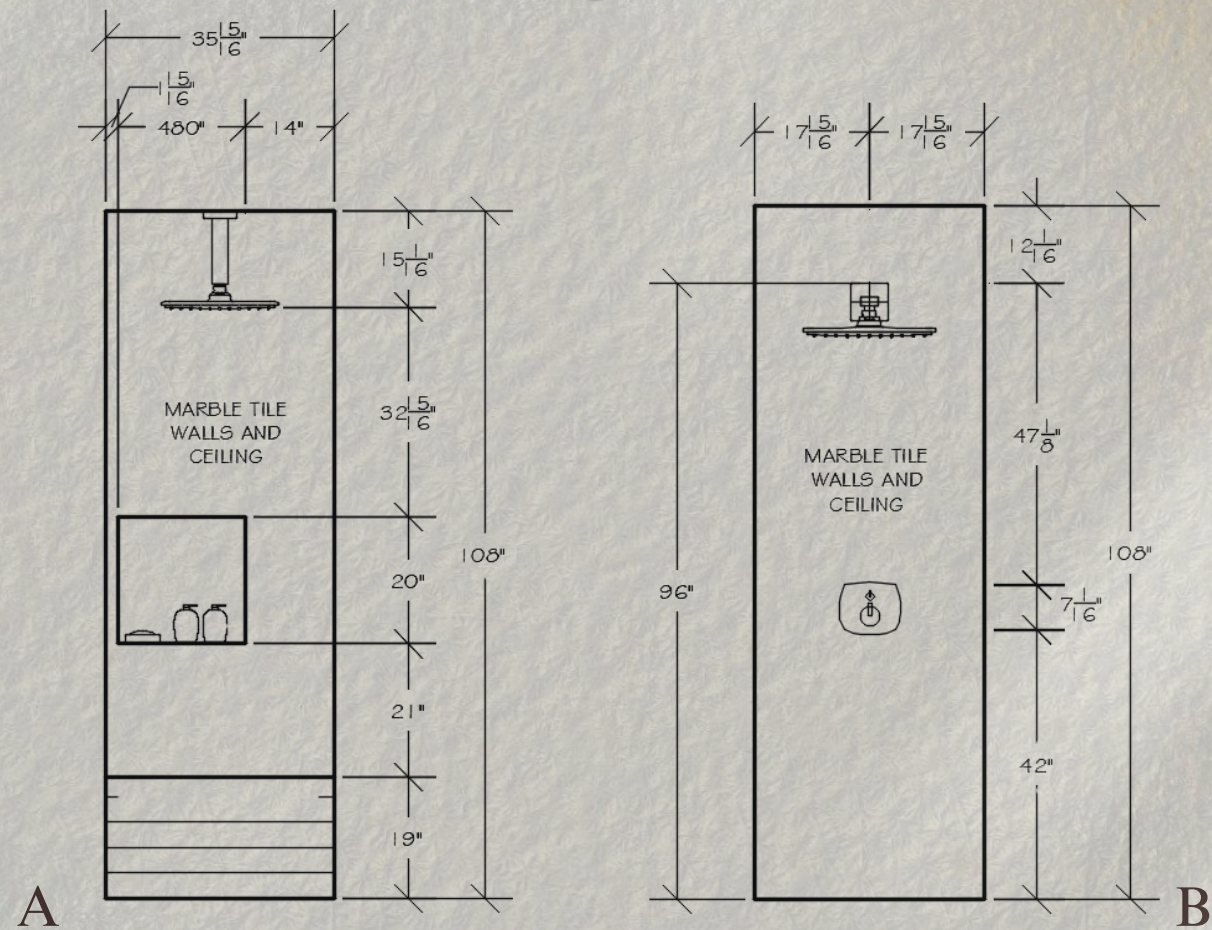
SPECIFICATIONS AND NOTES:

- ① VEP3 CUT TO APPROX. 1"  
QTY: 2
- ② TOWEL BAR +56" AFF  
DELTA, MDL 73508-CZ  
9-3/4"W X 3-1/8"D X 1-3/4"H  
CHAMPAGNE BRONZE, QTY: 2
- ③ TV MIRROR +48" AFF  
ELECTRIC MIRROR, MDL 156-AV-3642  
36"W X 15"D X 42"H  
INTEGRATED  
QTY: 2
- ④ DECK MOUNT SINGLE HOLE FAUCET  
KOHLER, MDL K-R32930-4D-2MB  
5.5"D X 8"H  
BRUSHED BRASS, QTY:2
- ⑤ SINK  
KOHLER, MDL K-2209-0  
14"W x 5-3/4"D x 17"H  
WHITE, QTY:2
- ⑥ CUSTOM QUARTZ COUNTERTOPS  
W/  
2 INTEGRATED LAVATORIES AND  
ROUND CORNERS
- ⑦ VDB15 WITH VANITY OUTLET DRAWER  
REV-A-SHELF, MDL 4VOD-185C-1  
15"W x 20.5"D x 9"H
- ⑧ PLYWOOD TOEKICK  
2 PCS, TKP-8
- ⑨ ANTI SLIP FLOORING  
ARTSAICS, MDL 100609205  
12"W x 3/8"D x 12"H  
HONED FINISH
- ⑩ SHOWER HEAD +96" AFF  
DELTA, MDL RP91363RB  
8"W x 5"D x 6"H  
CHAMPAGNE BRONZE  
  
SHOWER HEAD -MOUNT TO CEILING  
DELTA, MDL RP91363RB  
8"W x 5"D x 6"H  
CHAMPAGNE BRONZE  
  
SHOWER VALVE  
DELTA, MDL T27T976  
7"W x 5"D X 8"H  
CHAMPAGNE BRONZE  
COMBINATION PRESSURE - 42" AFF  
CONTROLS BOTH SHOWER HEADS  
HIGH-LIMIT STOP OVER 120°F
- ⑪ SHOWER WALLS REINFORCED FOR  
GRAB BARS AND WATERPROOF  
MATERIAL FLOOR TO CEILING
- ⑫ DIGITAL STEAM CONTROL  
+38" AFF  
DELTA, MDL 5P-EST15-BL  
3"W X 5/8"D X 3"H  
MATTE BLACK  
  
VENT +12" AFF  
DELTA, MDL 5P-EST15-BL  
3"W X 3"H  
360° DIFFUSING STEAMHEAD  
  
STEAM GENERATOR  
DELTA, MDL 5P-EST15-BL  
17.75"W X 7.5"D X 15.5"H
- ⑬ SHOWER BENCH  
35-15/16"W X 15"D X 19"H  
WATERPROOF SEAL ON ALL EDGES
- ⑭ TOILET  
KOHLER, MDL K-78279-96  
15"W X 29"D X 30"H  
COMFORT HEIGHT  
BISCUT  
  
TOILET PAPER HOLDER +26" AFF  
MOEN, MDL BH3608BZG  
7"W X 3"D X 2.5"H  
BRONZED GOLD









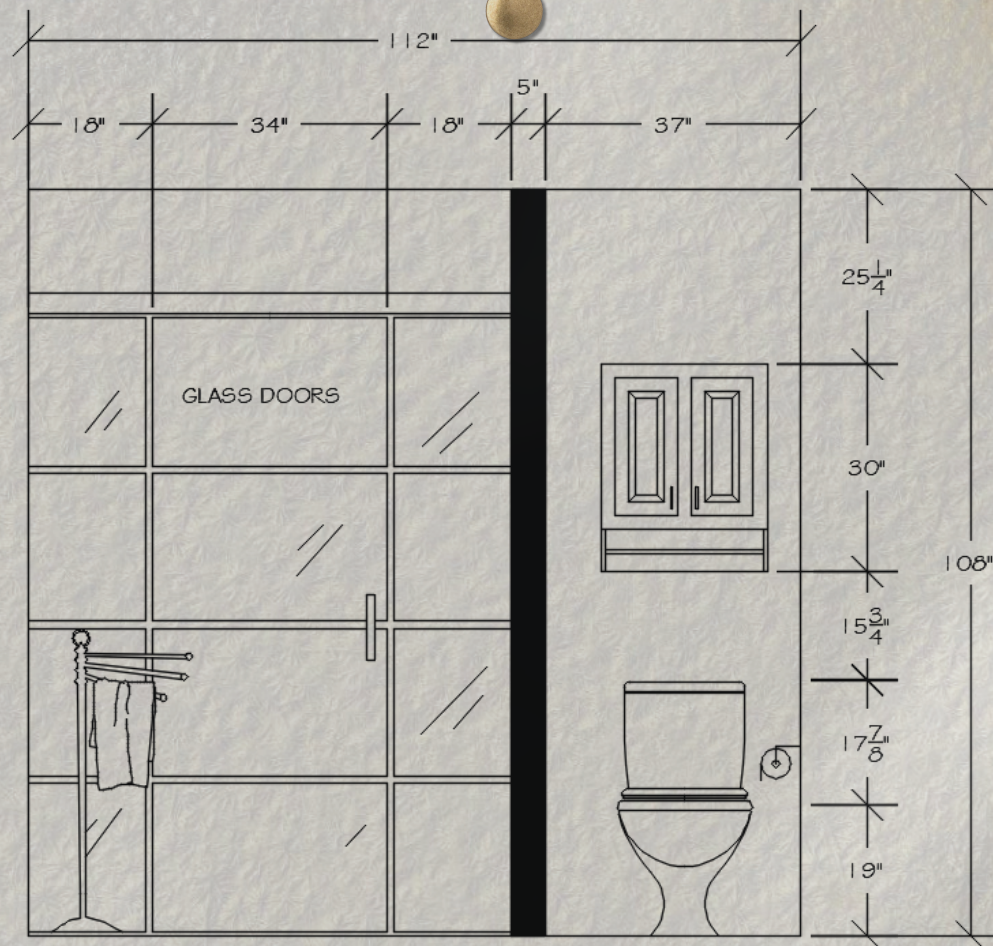
*For this remodel, the goal was to create a bathroom that not only reflects the client's vision of a Tuscany-inspired retreat but also provides the Orchard family with a more functional and comfortable space.*

*Warm, natural finishes and timeless architectural details were chosen to echo the rustic elegance of the Italian countryside, while modern updates ensure everyday usability. The layout was carefully reimagined to improve flow and maximize storage, making the bathroom both beautiful and practical for family living. The result is a serene, Tuscan-inspired sanctuary tailored to the Orchard family's lifestyle.*

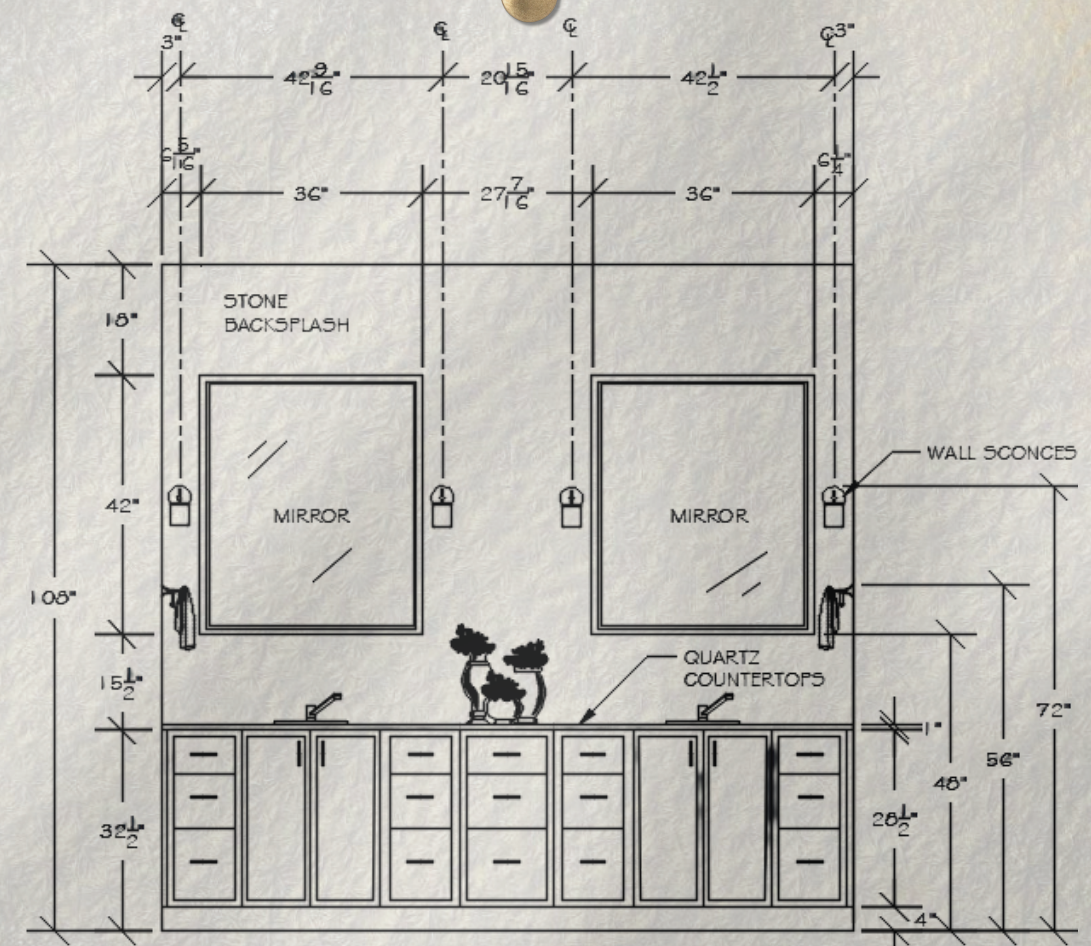




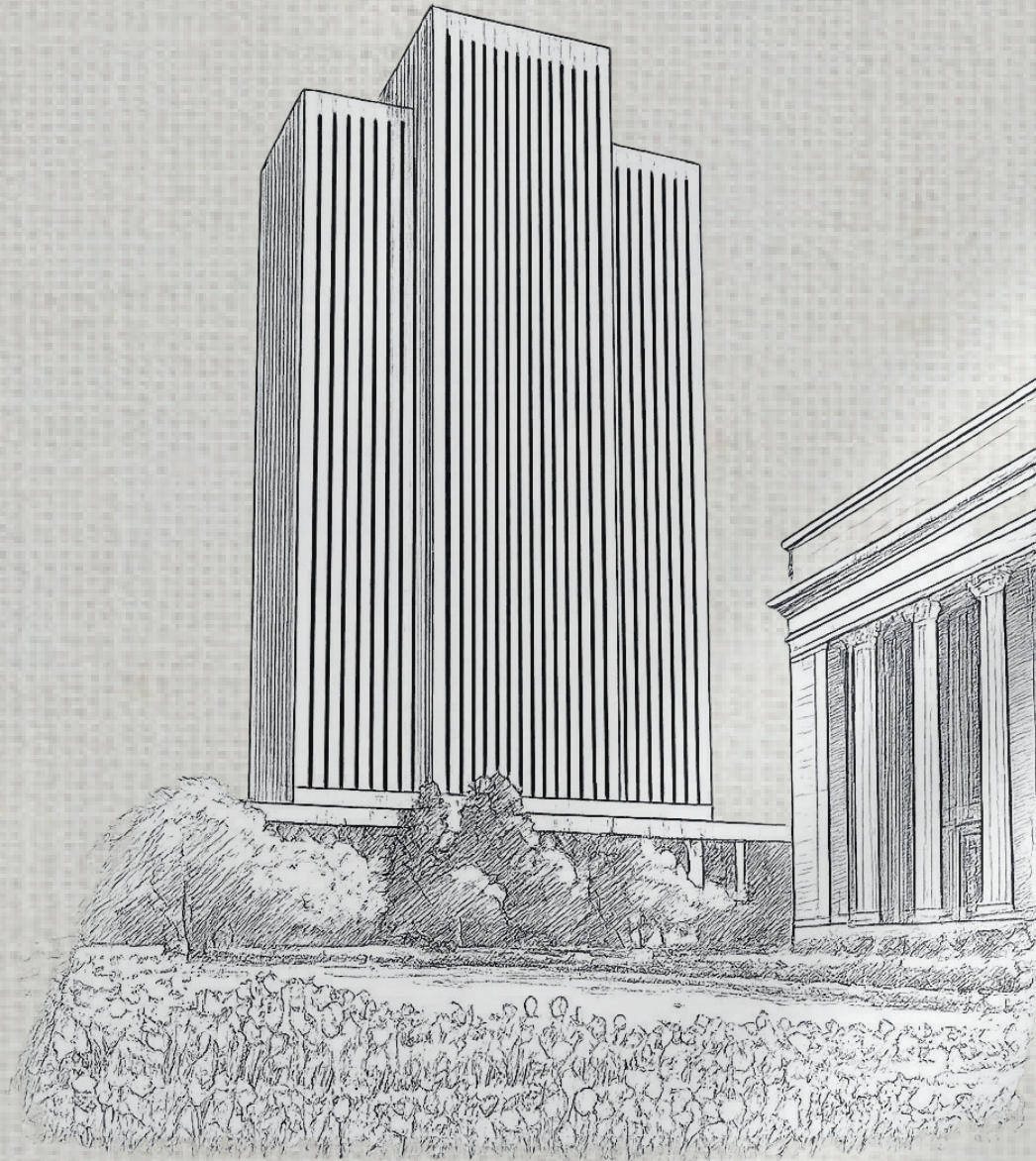
C



D

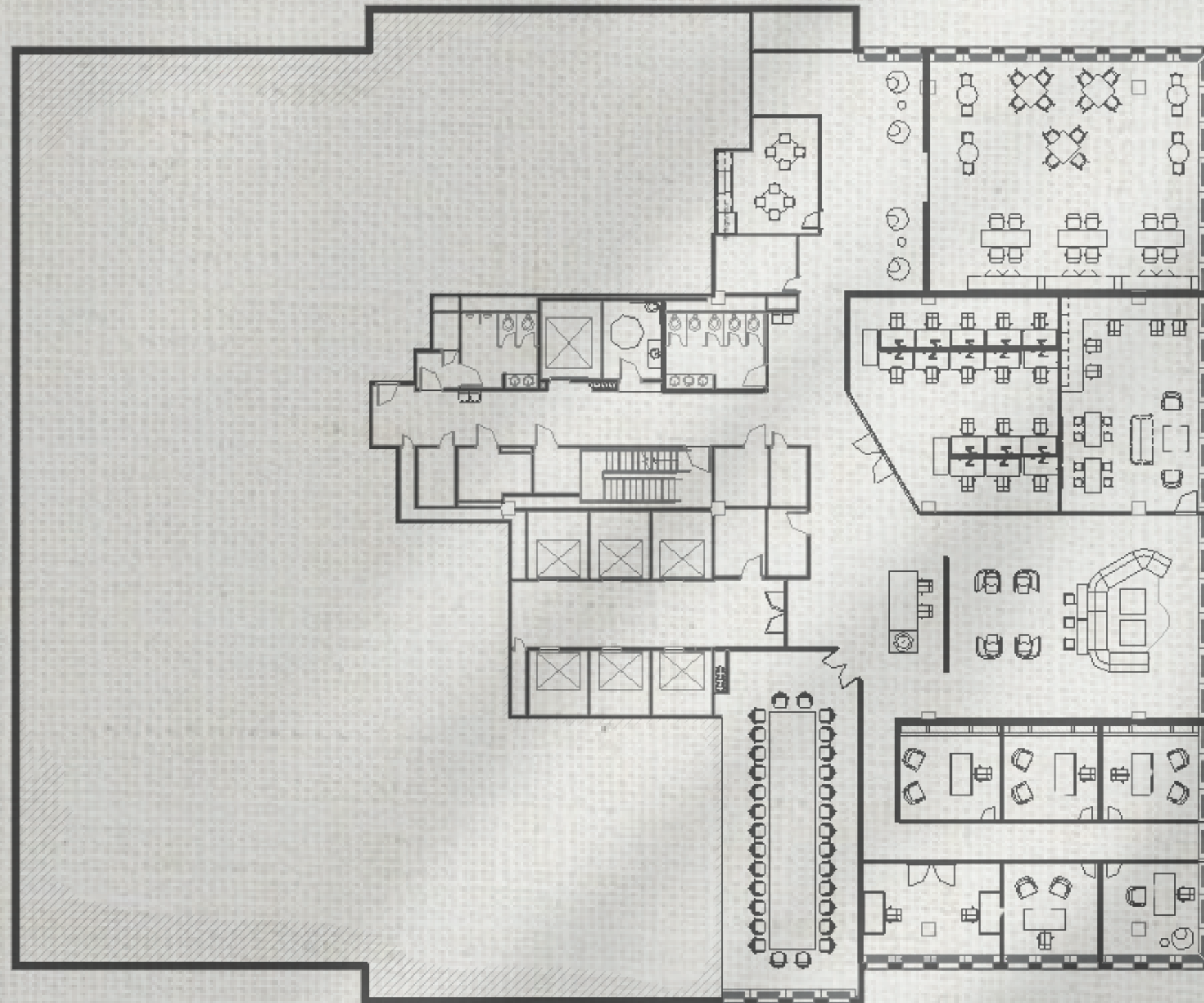




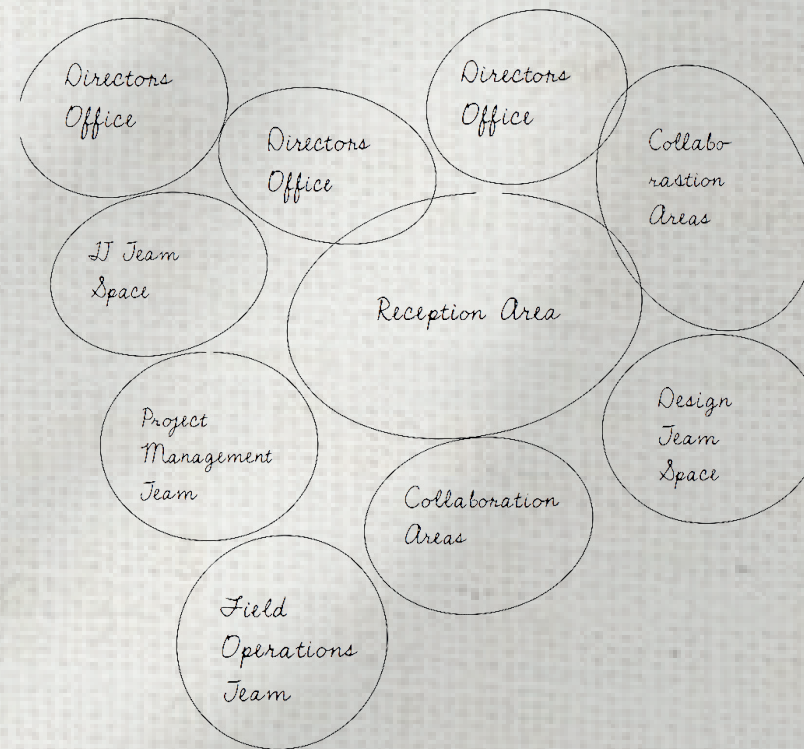
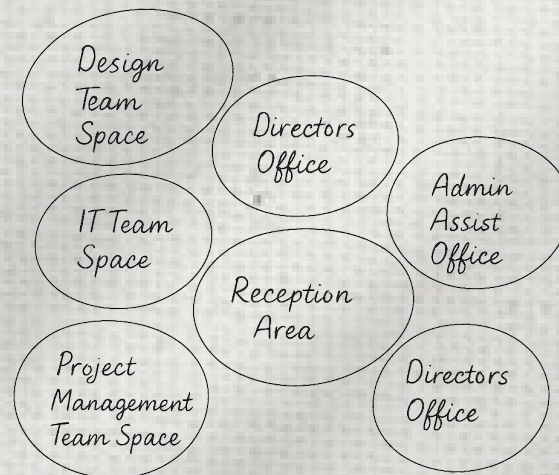
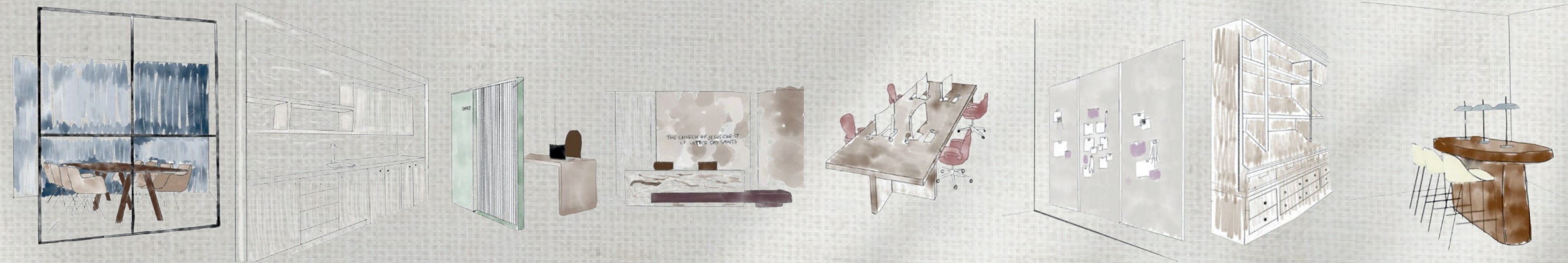


*Church Office Building*  
*50 E North Temple Street*  
*Salt Lake City, UT*













1.



5.



2.



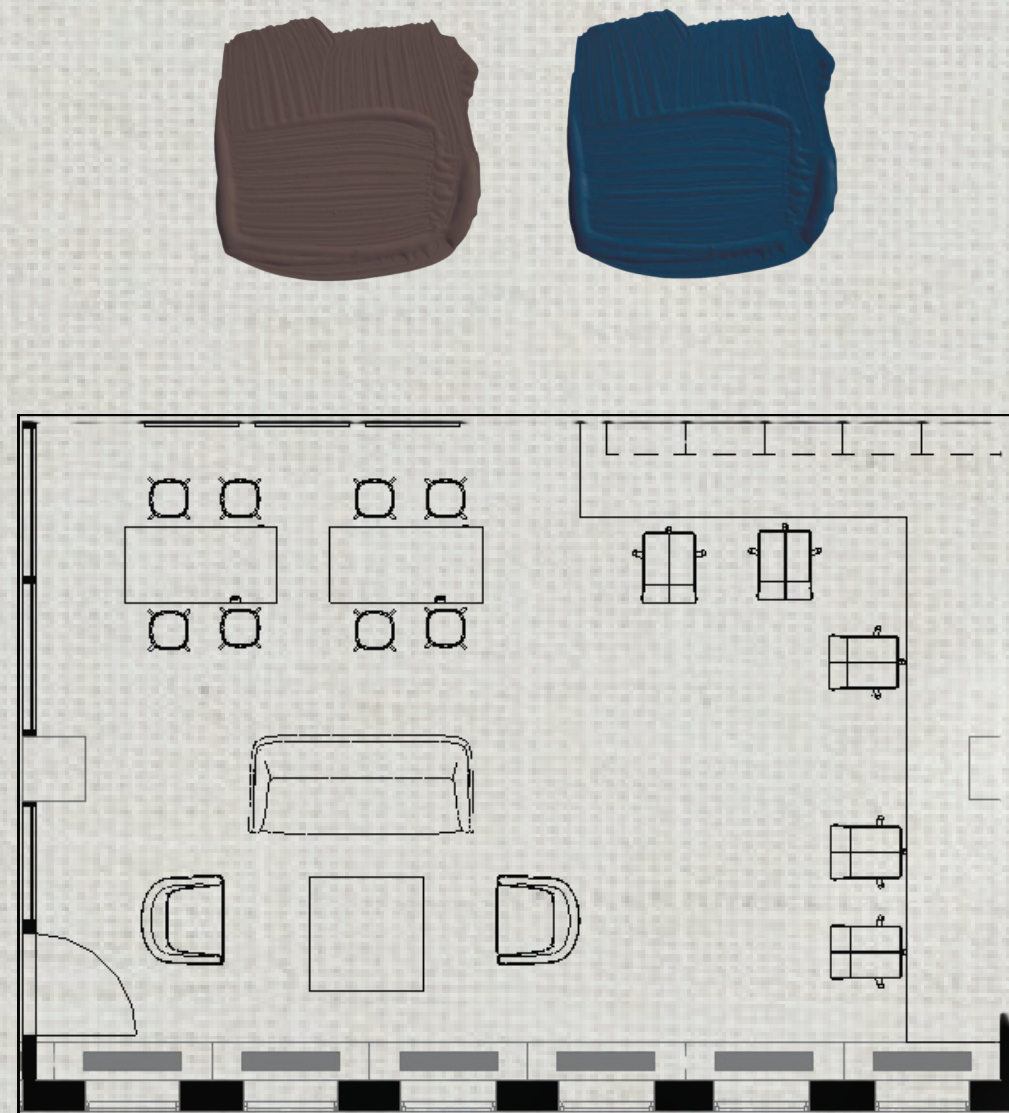
3.



4.

- 1. Wall Tapestry
- 2. Limewash Walls
- 3. Flooring
- 4. Burl Wood Table
- 5. Chairs
- 6. Light Fixture

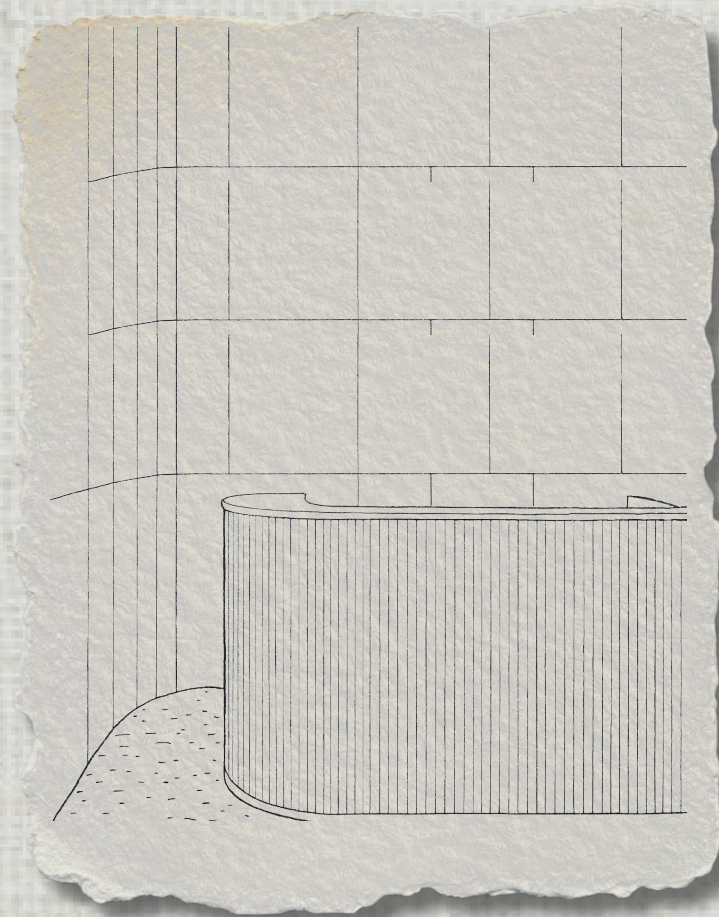




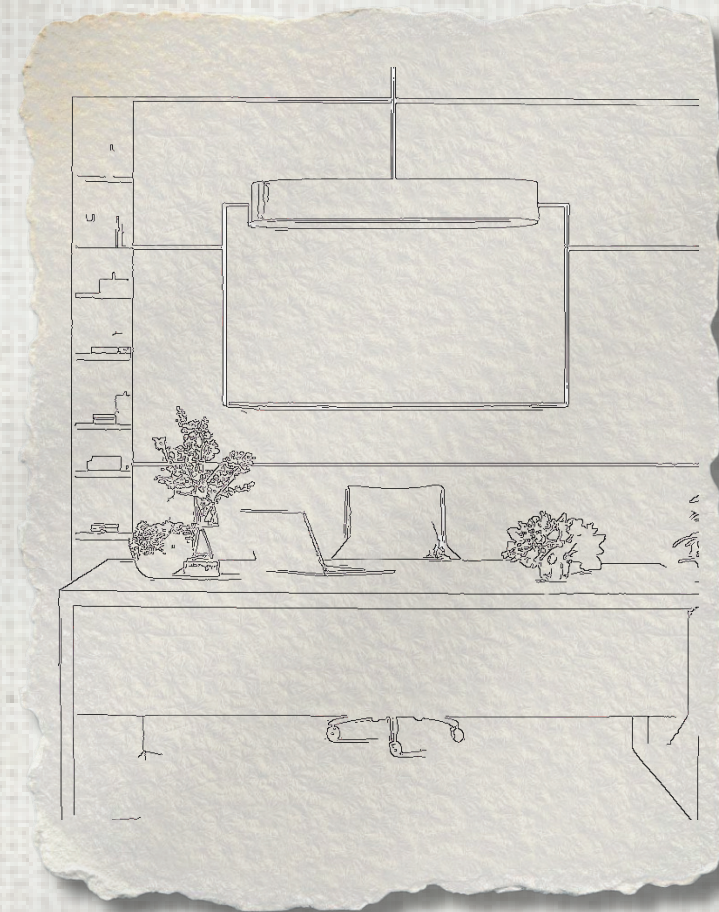
*A dedicated design team office brings the entire creative process into one place—supporting collaboration, quick decision-making, and a seamless flow from concept to execution.*







*Reception Desk*




*Director's Office*



*S a v a n n a h   L a b r u m*

 *@thedetailedhaven*

 *thedetailedhaven@gmail.com*

 *385-335-2333*

