

portfolio.

Ashley  
Larsen

INTERIOR DESIGN

# contents.

01

## Bountiful House

The intent of this project is to transform a traditional style home into a modern, open, and light filled space that supports a new stage of life for the homeowners, focusing on spacious gathering areas, a comfortable master suite, and enhanced natural light.

02

## COB 7th Floor

The intent of this project is to remodel the Church Office Building’s Interior Design Team floor to create a hybrid friendly layout that promotes collaboration, maximizes natural light, and fosters a warm and inviting atmosphere.

03

## Orchard Residence

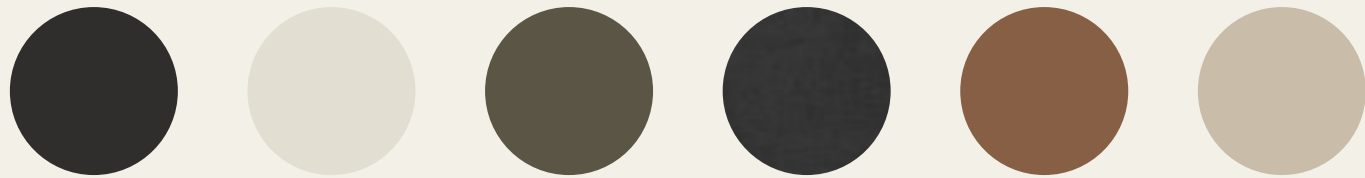
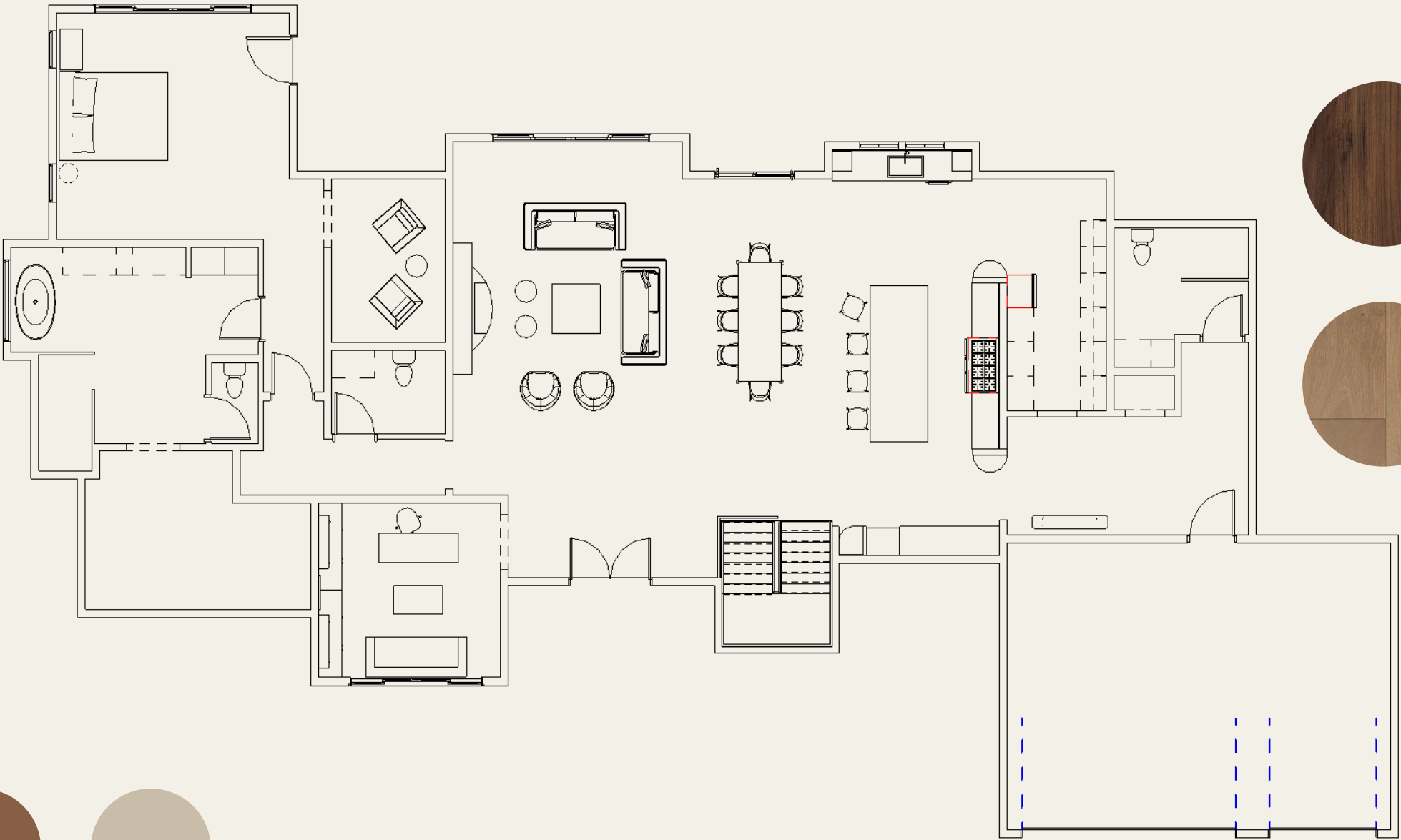
The intent of this project is to remodel the bathroom into an open and airy yet warm and inviting retreat within the home, creating a calming spa like atmosphere that blends functionality with comfort through the use of glass elements, mirrors, and rich dark wood cabinetry.

# 01 Bountiful House

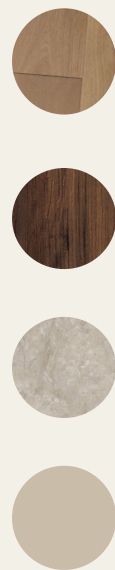
This family requested a full remodel of their home nestled in the hills of Bountiful. They envisioned a modern interpretation of a traditional style. With their children moving out, they wanted to open up several rooms and create a spacious master suite. Their priorities included open gathering spaces, a bright, airy layout, and plenty of natural light.



01 BOUNTIFUL HOUSE







USED MATERIALS





OFFICE



FURNTIURE



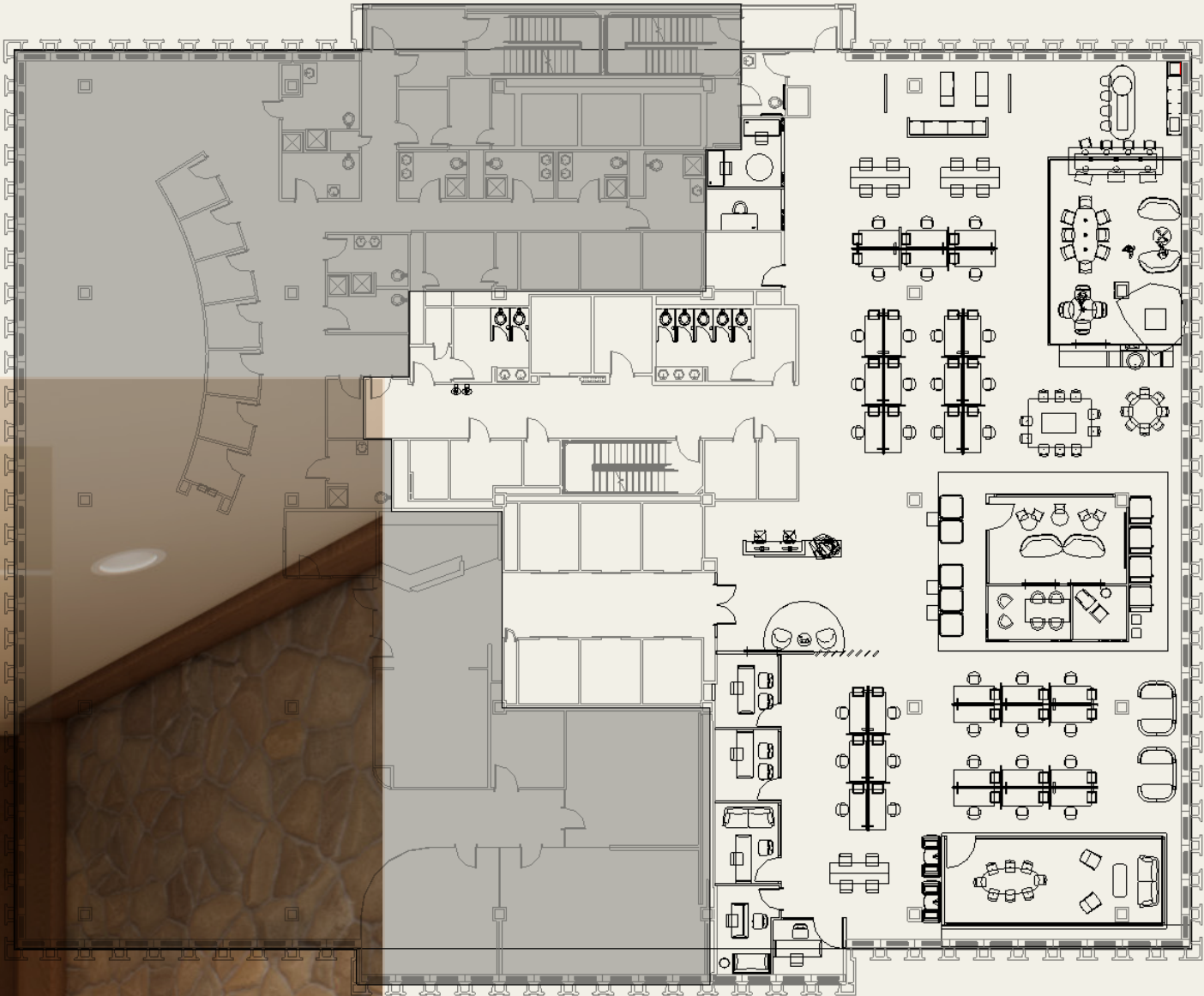


## 02 COB 7th Floor

The Church Office Building has requested a floor remodel for the Interior Design Team, aiming to create a more hybrid-friendly layout that also supports collaboration. The design needed to maximize natural light and foster a warm, inviting atmosphere



OFFICE



OVERALL FLOOR PLAN  
DESIGNED IN REVIT





BREAK AREA





CONFERENCE ROOM

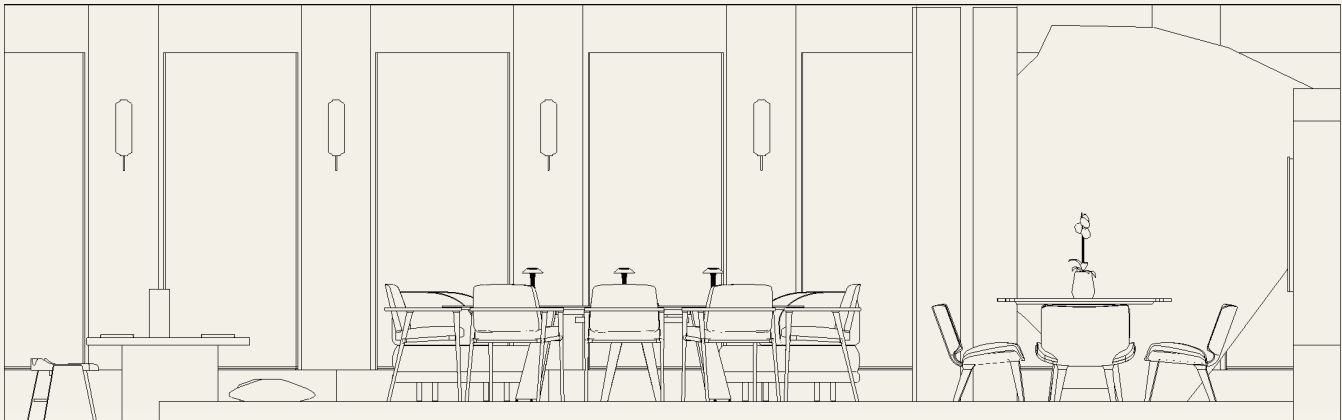
Designed as a central space for team collaboration and strategic meetings, this conference room balances professionalism with comfort. Warm wood tones, natural light, and biophilic accents create a calm, focused atmosphere that encourages clarity and connection.





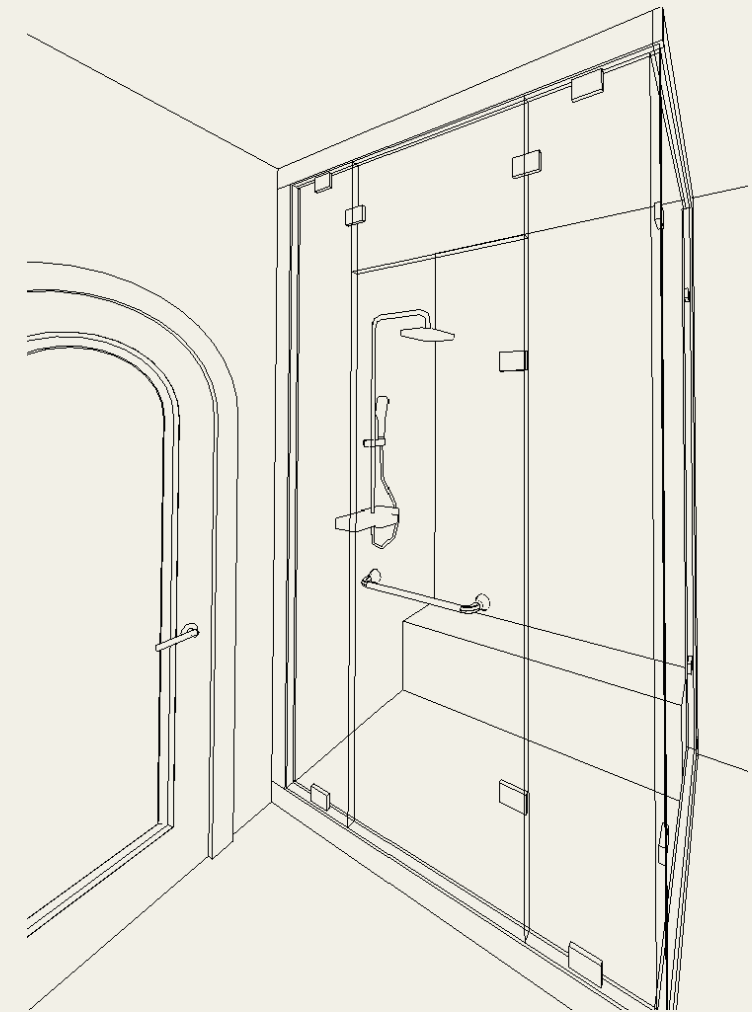
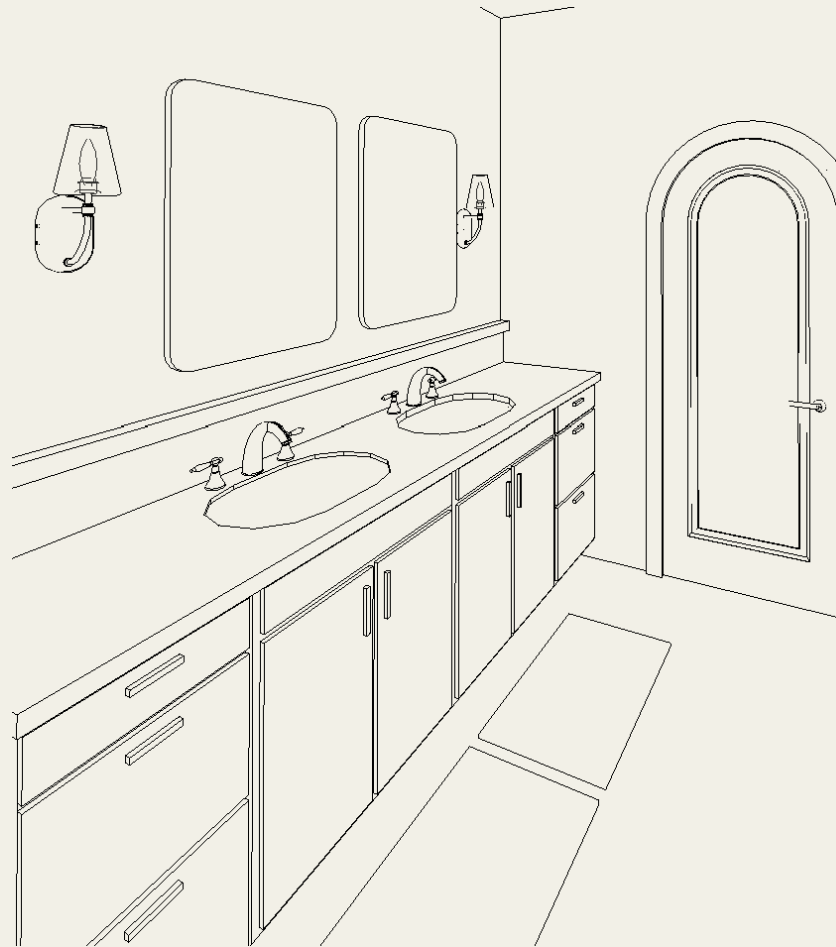
COLLABORATION

This collaborative office space was intended to encourage creativity, teamwork, and flexibility. Open seating, warm tones, and natural light create an inviting atmosphere, while thoughtful zoning allows for both group interaction and quiet focus. The space strikes a balance between functionality and comfort, supporting a dynamic and productive work environment.



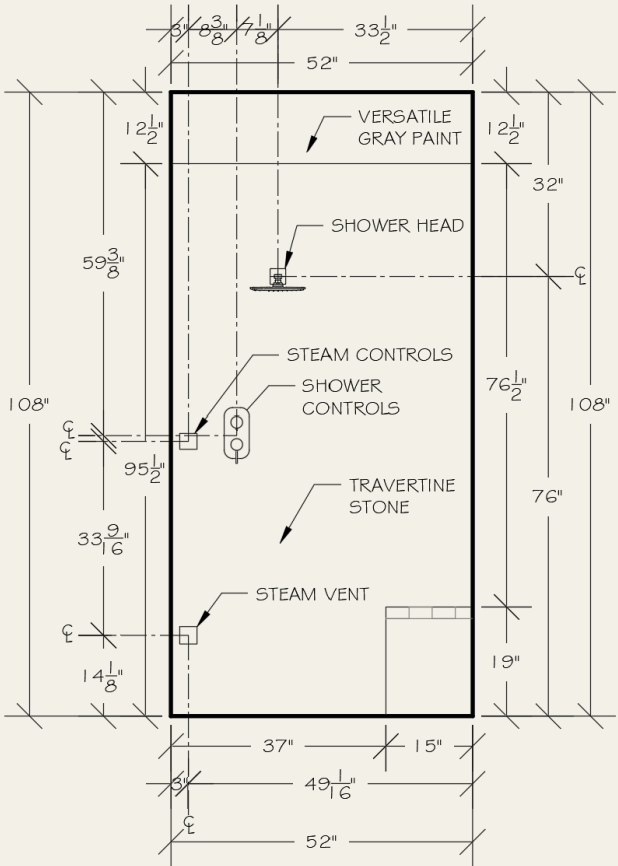
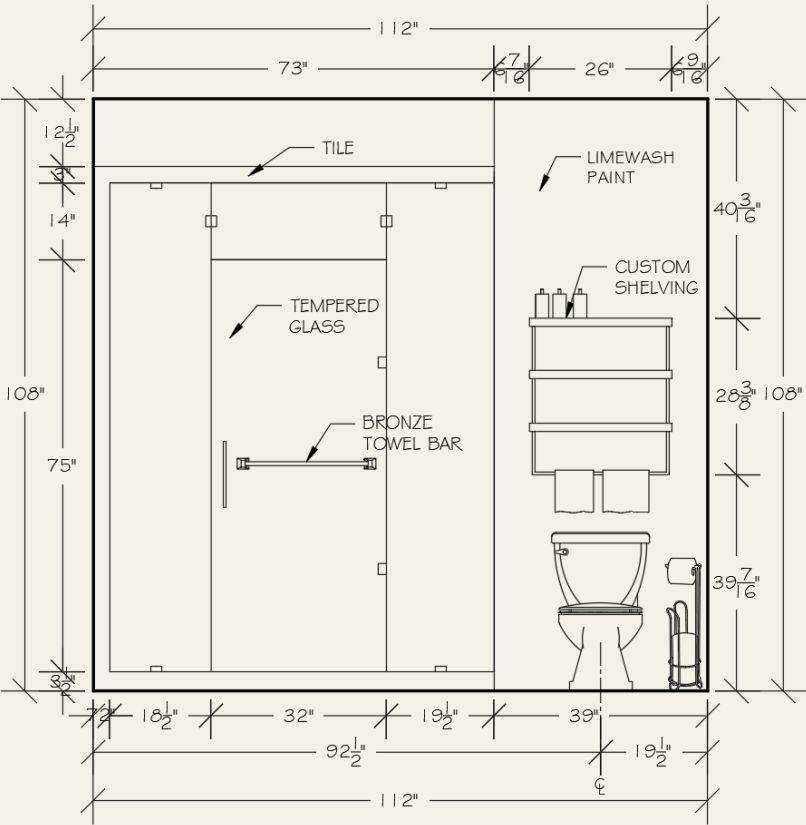
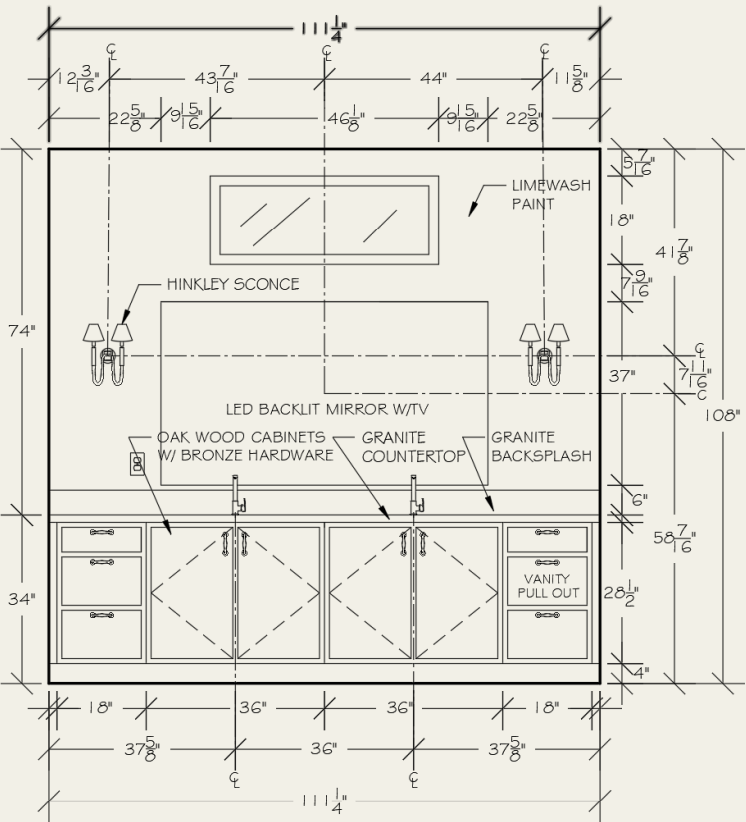
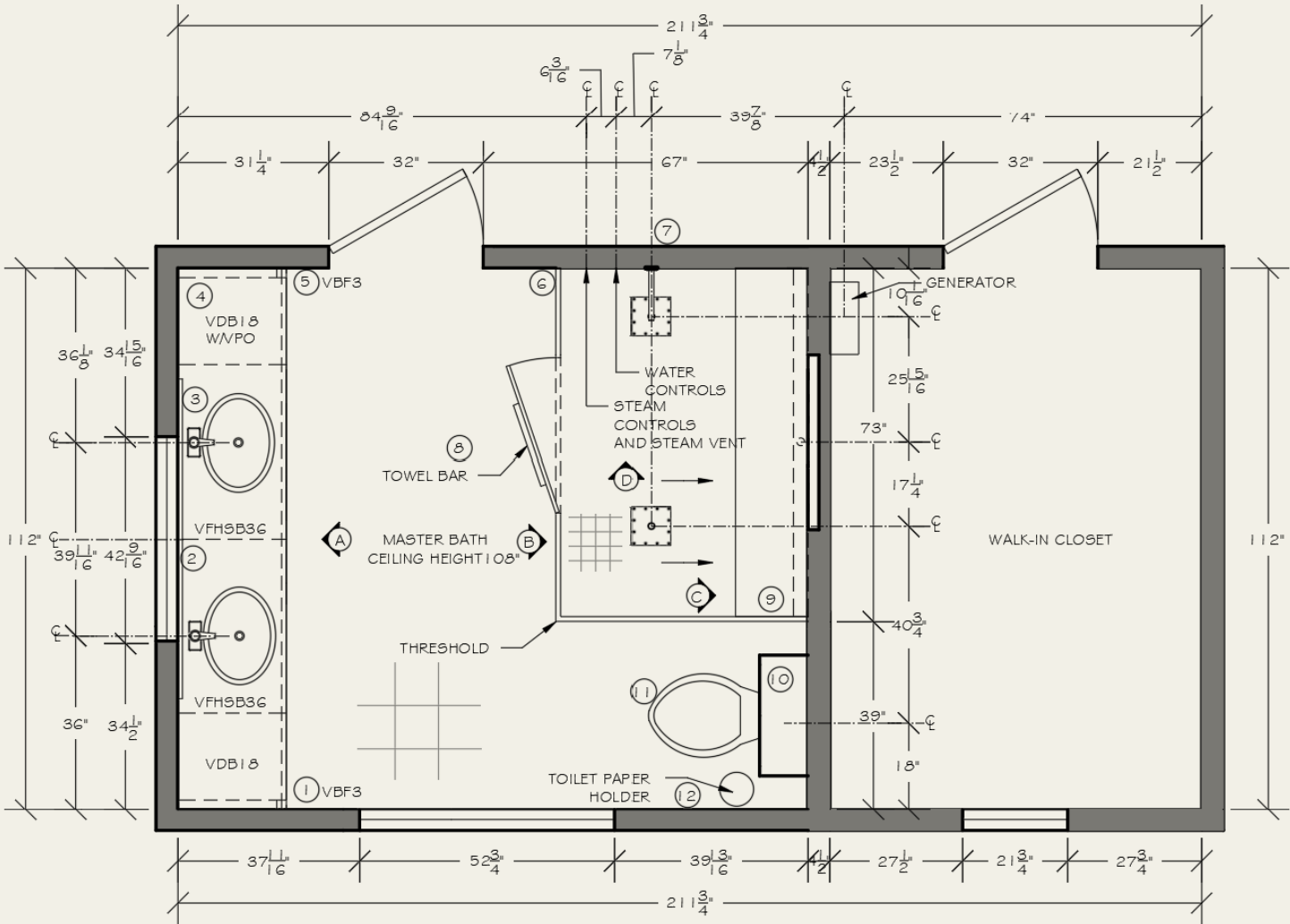
## 03 Orchard Residence

This family envisioned a bathroom remodel that felt more open and airy, yet still warm and inviting—a retreat within their home. The intention behind the design was to create a calming, spa-like atmosphere that blends functionality with comfort. To achieve this, we introduced glass elements and thoughtfully placed mirrors to reflect natural light and visually expand the space. Rich, dark wood cabinetry adds depth and warmth, anchoring the room with a sense of coziness. The result is a harmonious balance between spaciousness and intimacy, designed to offer a peaceful start and end to each day.





03 ORCHARD RESIDENCE









Thank you!

ashleyllarsen@hotmail.com

(801) 828 - 6299