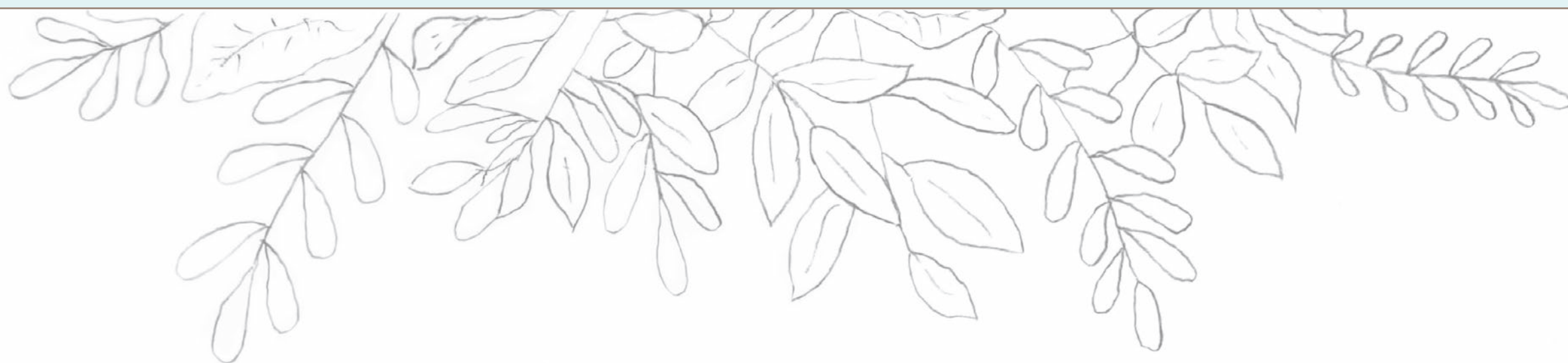


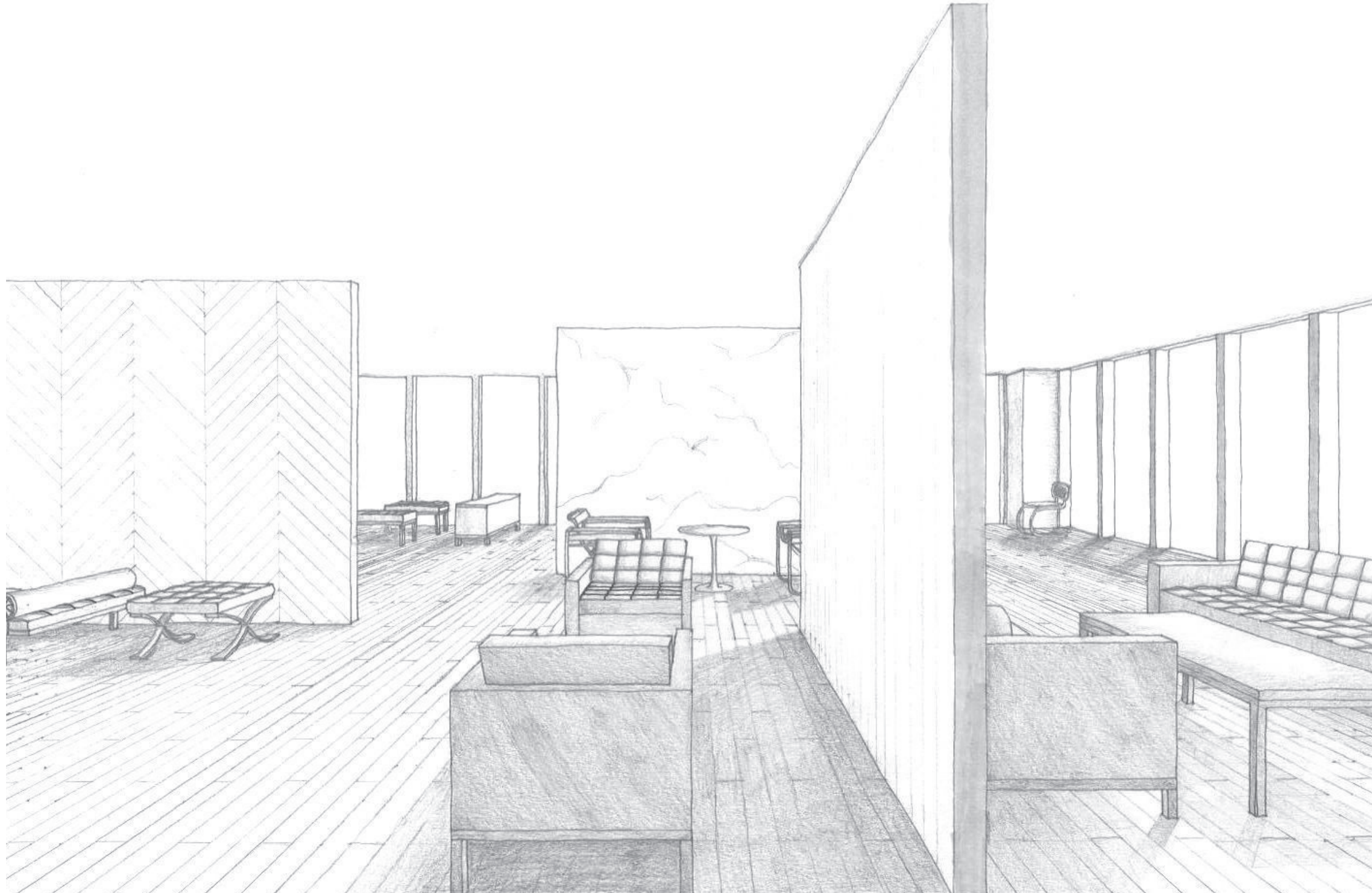


Emily Mills

Interior Design Portfolio

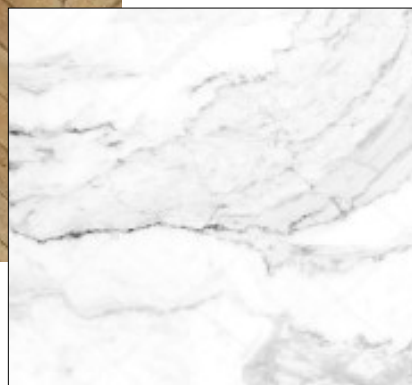
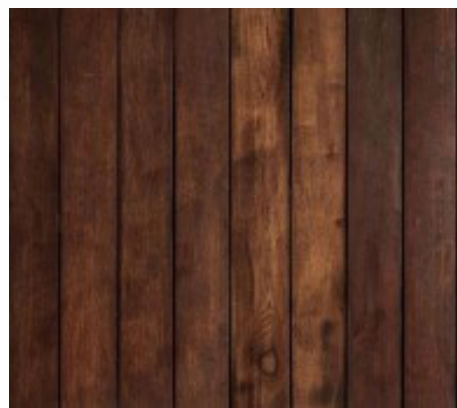


KNOLL EXHIBIT



In celebration of the life and work of Florence Knoll, a classroom on the eighth floor of Ensign College is to be renovated to exhibit the furniture and style of her time and her creations. Furniture pieces from Marcel Breuer and Mies Van Der Rohe have also been included to represent the Modern/Bauhaus style time period.

Perspective Sketches



TINY HOUSE



The O'Hara's are wanting a tiny home to retire in that is large enough to allow a couple guests and family members to stay over. The overall square footage they want is 400. To accomodate their desires, a square floor plan is used with a loft bedroom and a guest bedroom on the first floor. Maximizing space is very important to them and would like to have a full size kitchen.

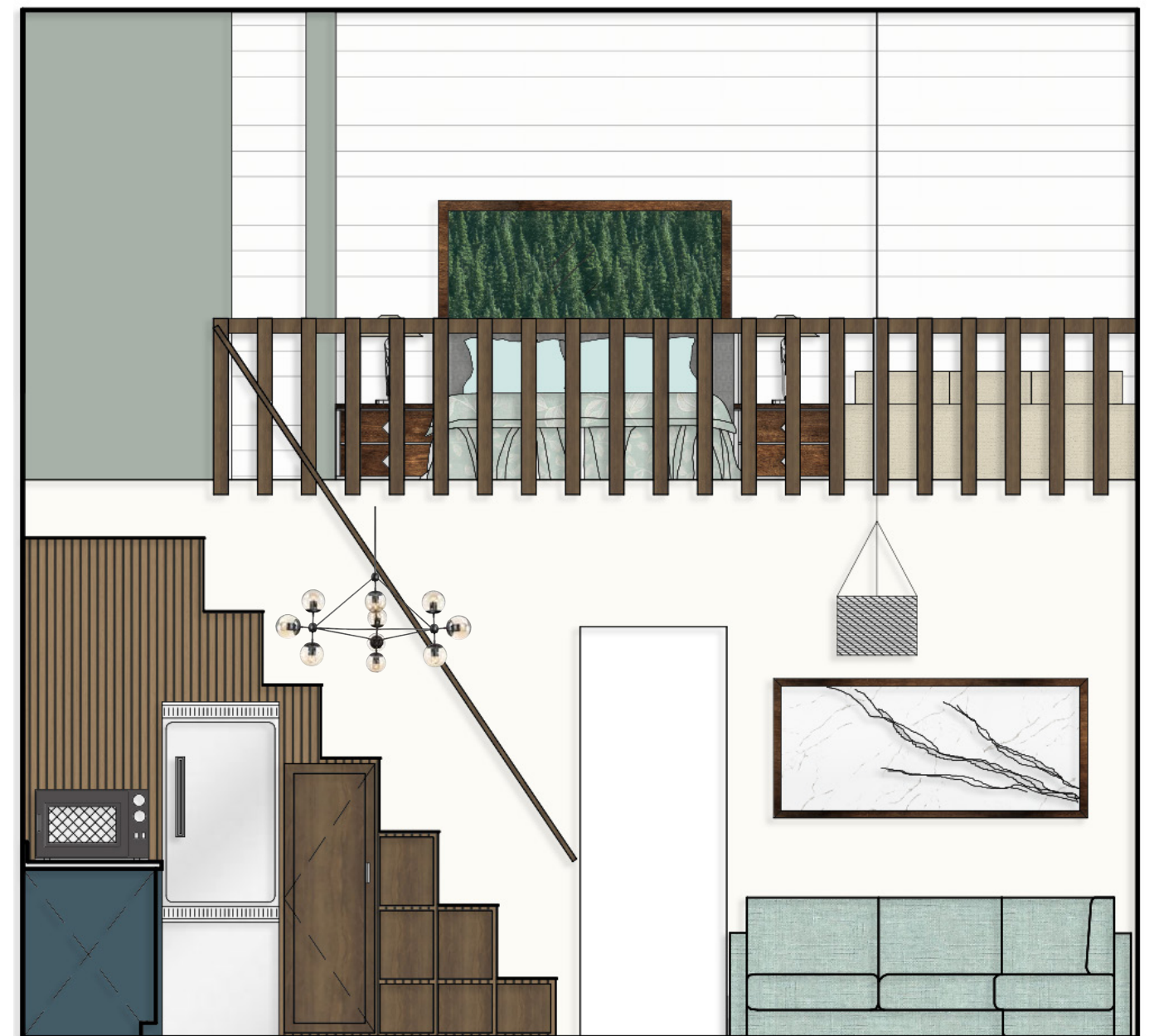
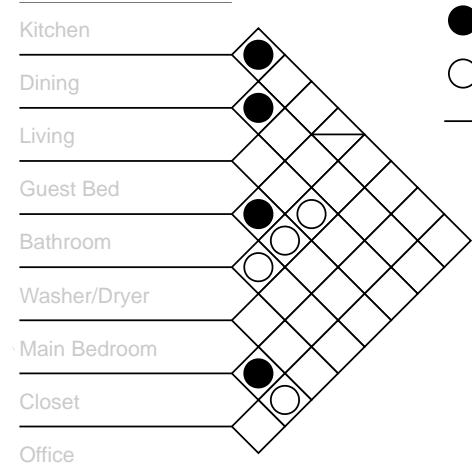

```
graph TD; MB((MASTER BEDROOM)) --- C((CLOSET)); MB --- O((OFFICE))
```

A hand-drawn diagram showing a central oval labeled "MASTER BEDROOM" connected by lines to two other ovals: "CLOSET" on the left and "OFFICE" on the right.

```
graph LR; GB((GUEST BEDROOM)) --- B((BATHROOM)); B --- WD((W/D)); WD --- UR((UTILITY ROOM)); KD((KITCHEN/DINING)) --- LR((LIVING ROOM))
```

A hand-drawn floor plan of a house. The plan includes the following rooms and their connections:

- GUEST BEDROOM** is connected to **BATHROOM**.
- BATHROOM** is connected to **W/D** (Wardrobe).
- W/D** is connected to **UTILITY ROOM**.
- KITCHEN/DINING** is connected to **LIVING ROOM**.



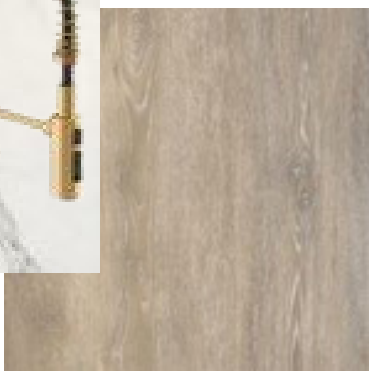
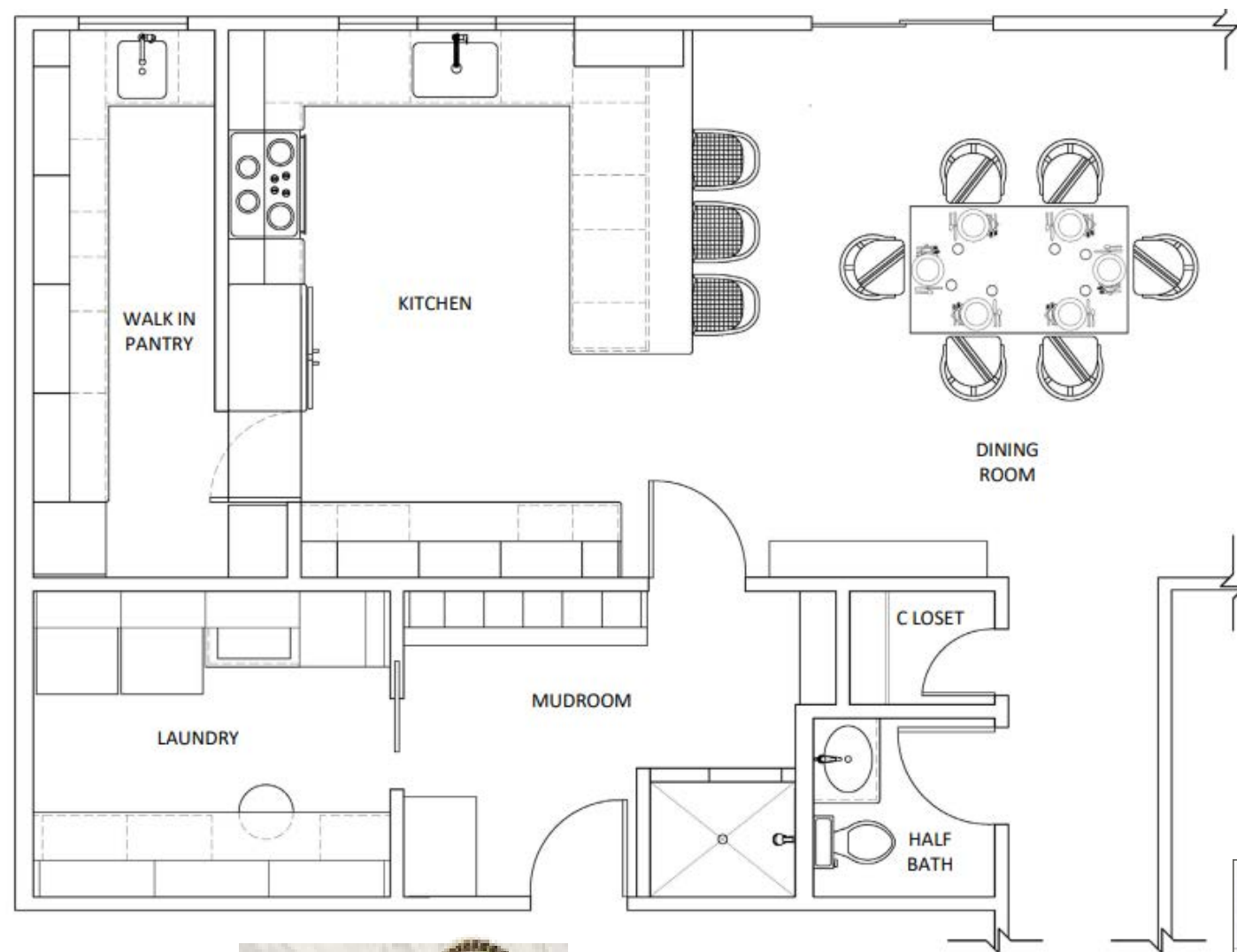
POND'S RESIDENCE



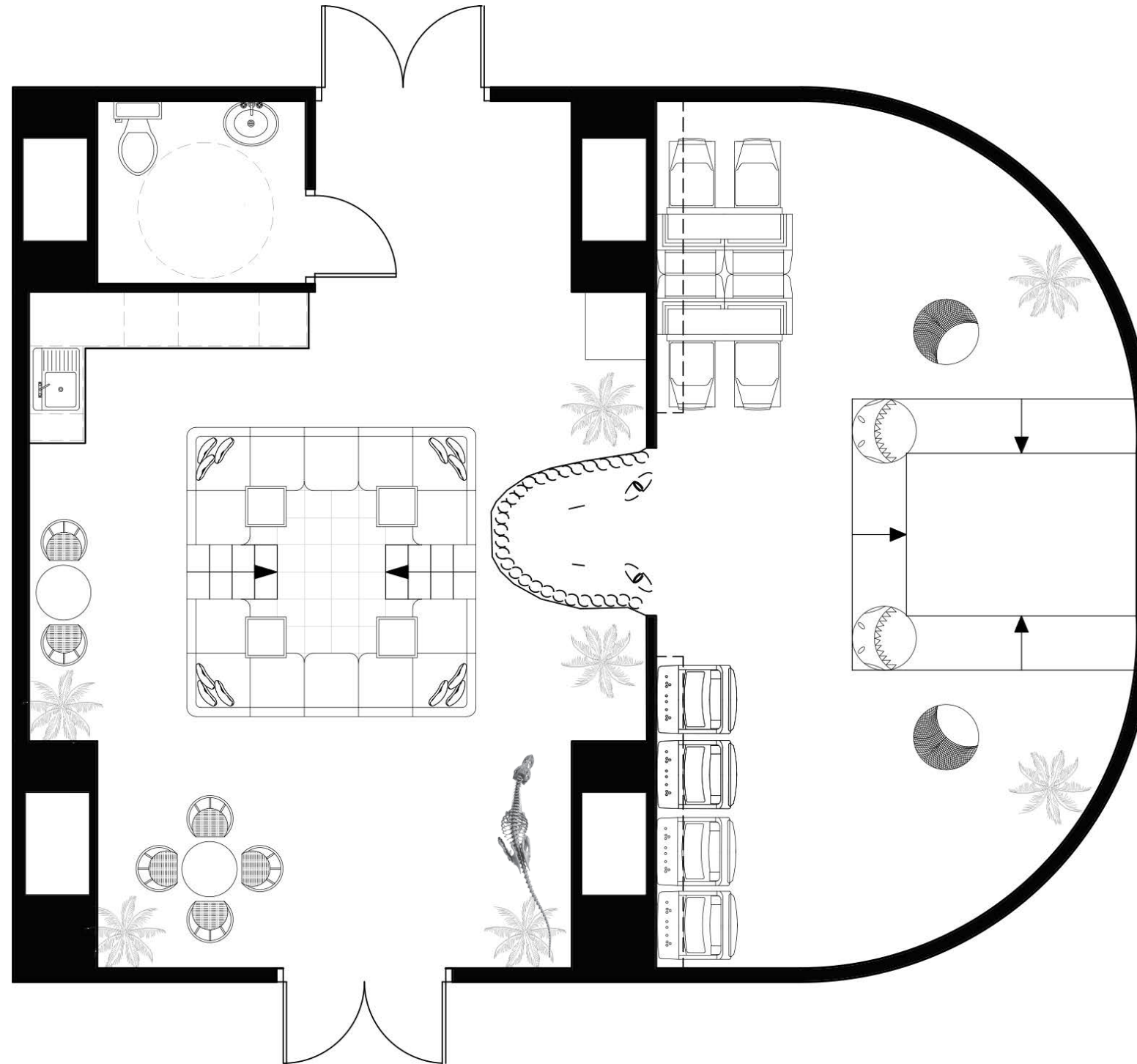
The Pond family wants to update and remodel their kitchen, butler's pantry, mud room, and half bath to keep up with the current interior design trends and sustainable, energy efficient technology solutions. New finishes and modern technology have been implemented to create a trendy updated design.

Kitchen & Pantry

As desired, base cabinet storage aids have been added to the kitchen with a potfiller over the stove. The butler's pantry includes an ice maker, a small sink, ample storage space.



TEEN CRUISE SHIP



This Cruise Ship space was redesigned to entertain pre-teen to teenage passengers. The program requirements were to provide a snack bar and storage space for games. The theme chosen is Jurassic Park with a designated lounge & snack area and a sectioned off theater/game room. Inspiration for the design was taken from the movies, including scenic wallpaper and finishes. A unisex ADA restroom is also provided.

Jurassic Park

Custom themed light fixtures simulate the Jurassic Park world featuring full scale velocoraptor skeletons, pop out dino heads from the walls, and tropical leaves over the conversation pit. A T-Rex head looms over the theater/game room entrance.



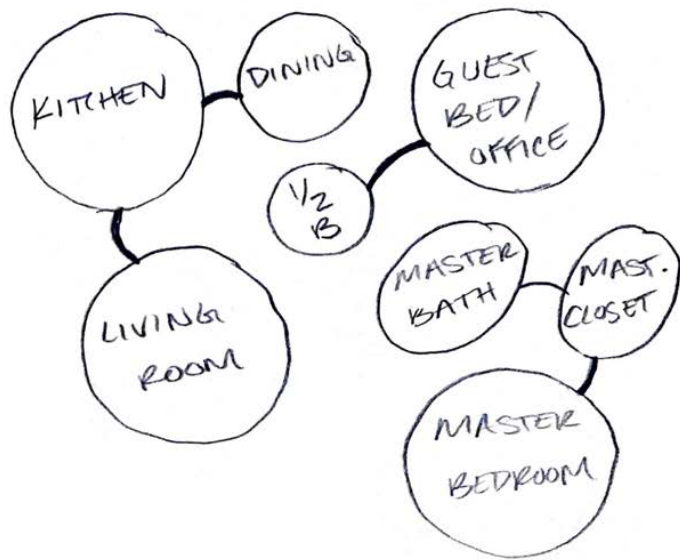
BOUNTIFUL HOUSE



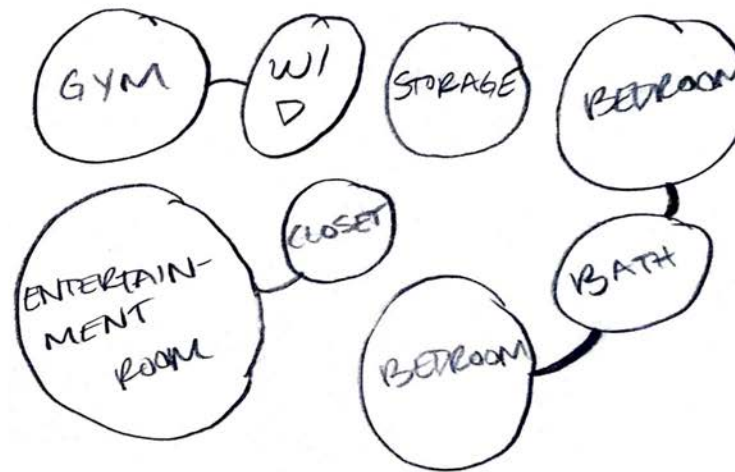
The Andreassen's are a working family. Their goal is to renovate their existing home in Bountiful, UT to become their forever home. In doing so, they hope to make it more of an inviting and calming space to come home to. They would like a larger kitchen with an angled island, and a larger master suite. They have chosen a mixture of both modern and farmhouse style finishes.

Inspiration & Design Process

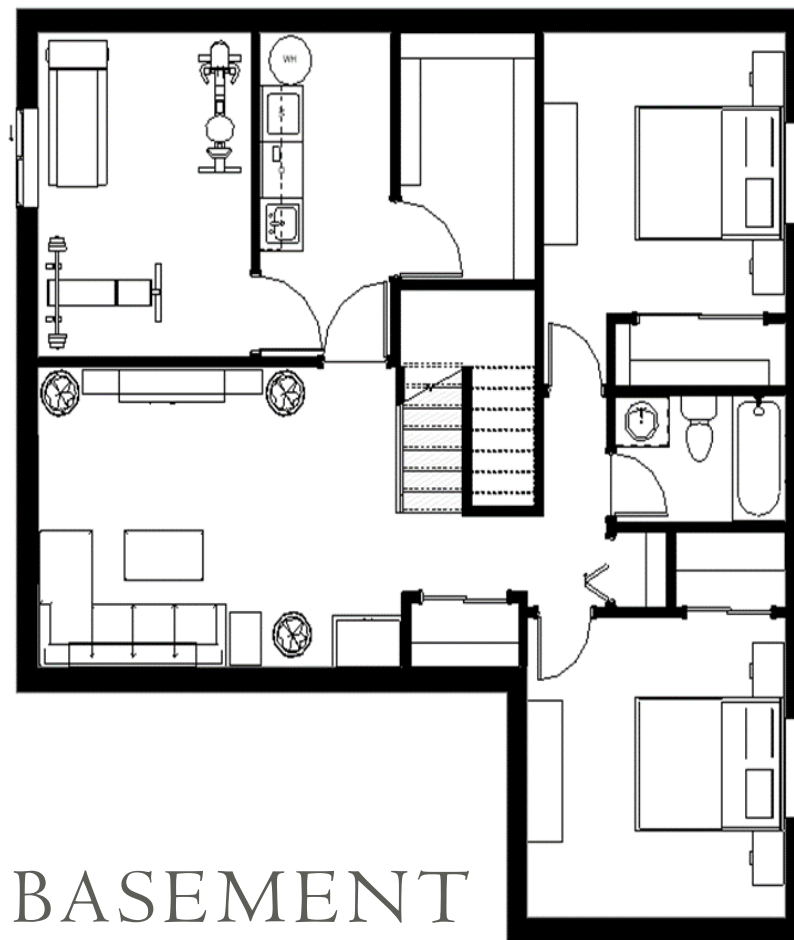
MAIN FLOOR



BASEMENT



MAIN FLOOR

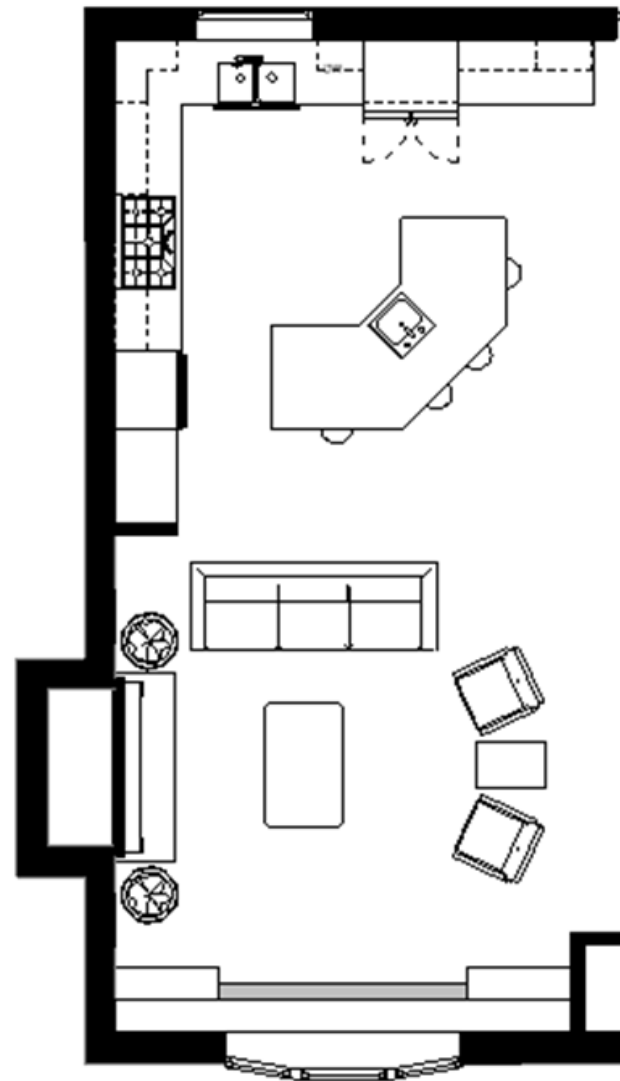


BASEMENT



Living Room

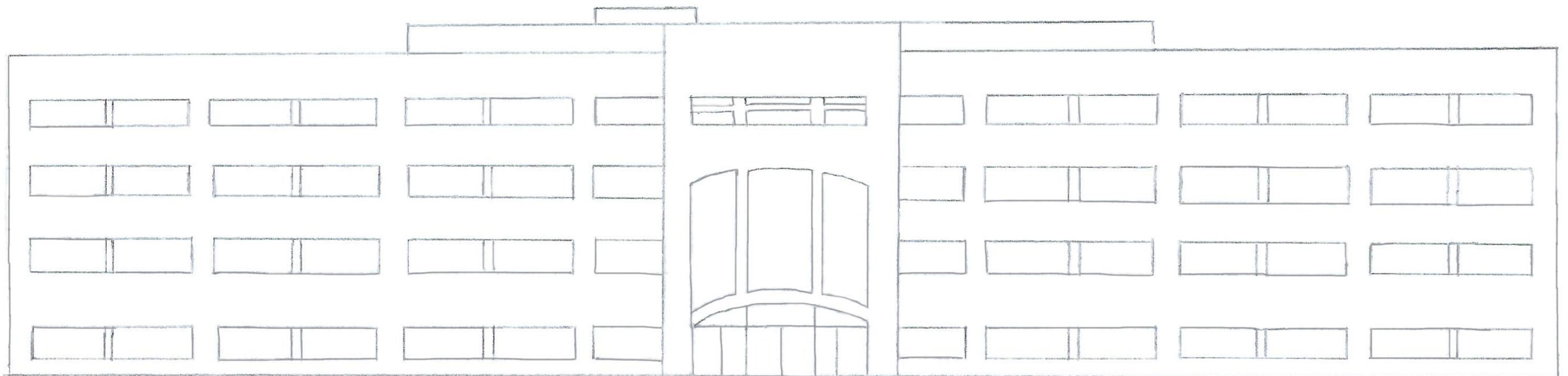
A built in window seat and large bay window adds style while providing ample natural light. Shiplap walls bring in the desired farmhouse style while soft nature themed finishes help to create a calming and comfortable space to come home to.



Kitchen



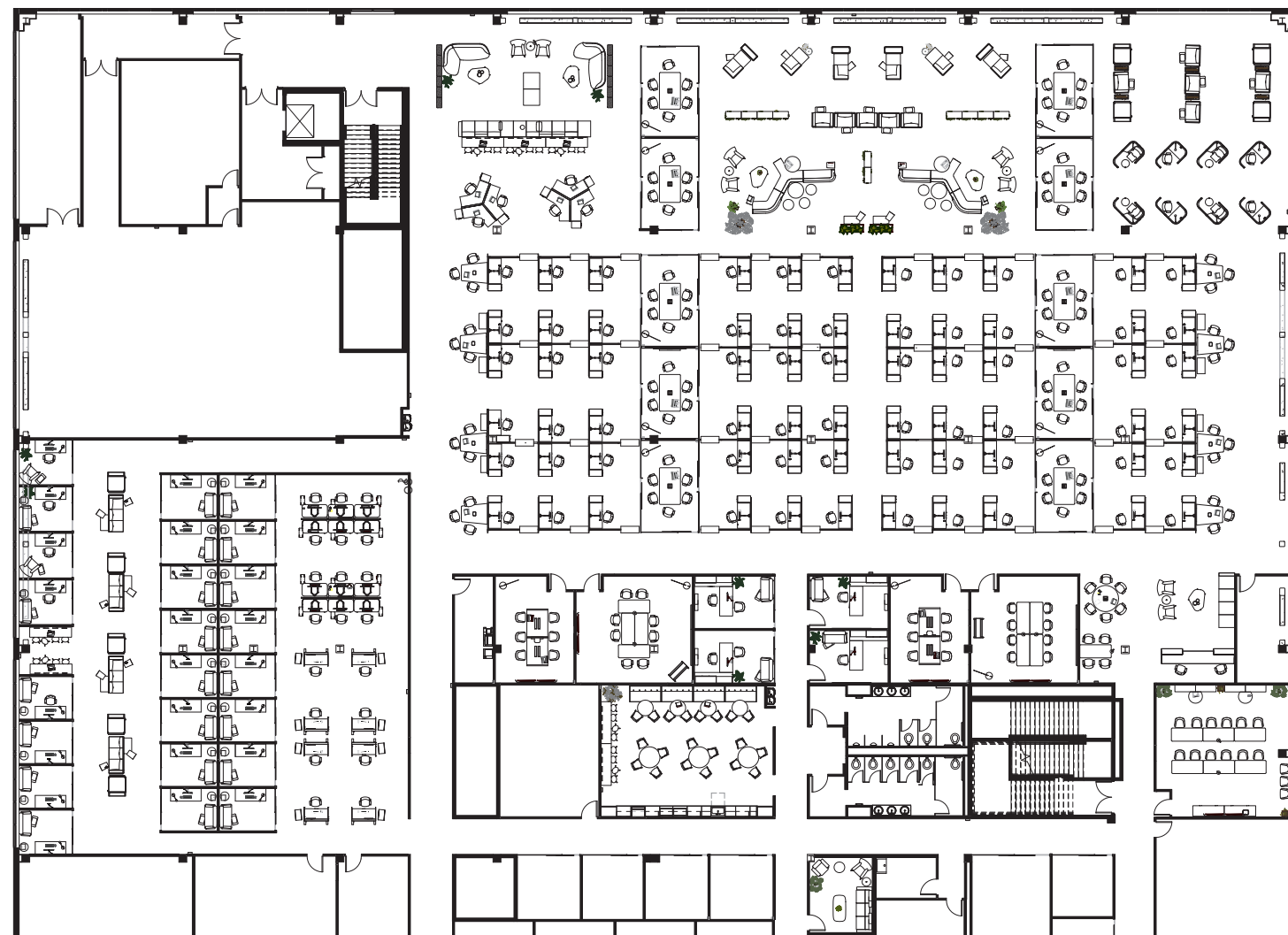
RIVERTON OFFICE BUILDING



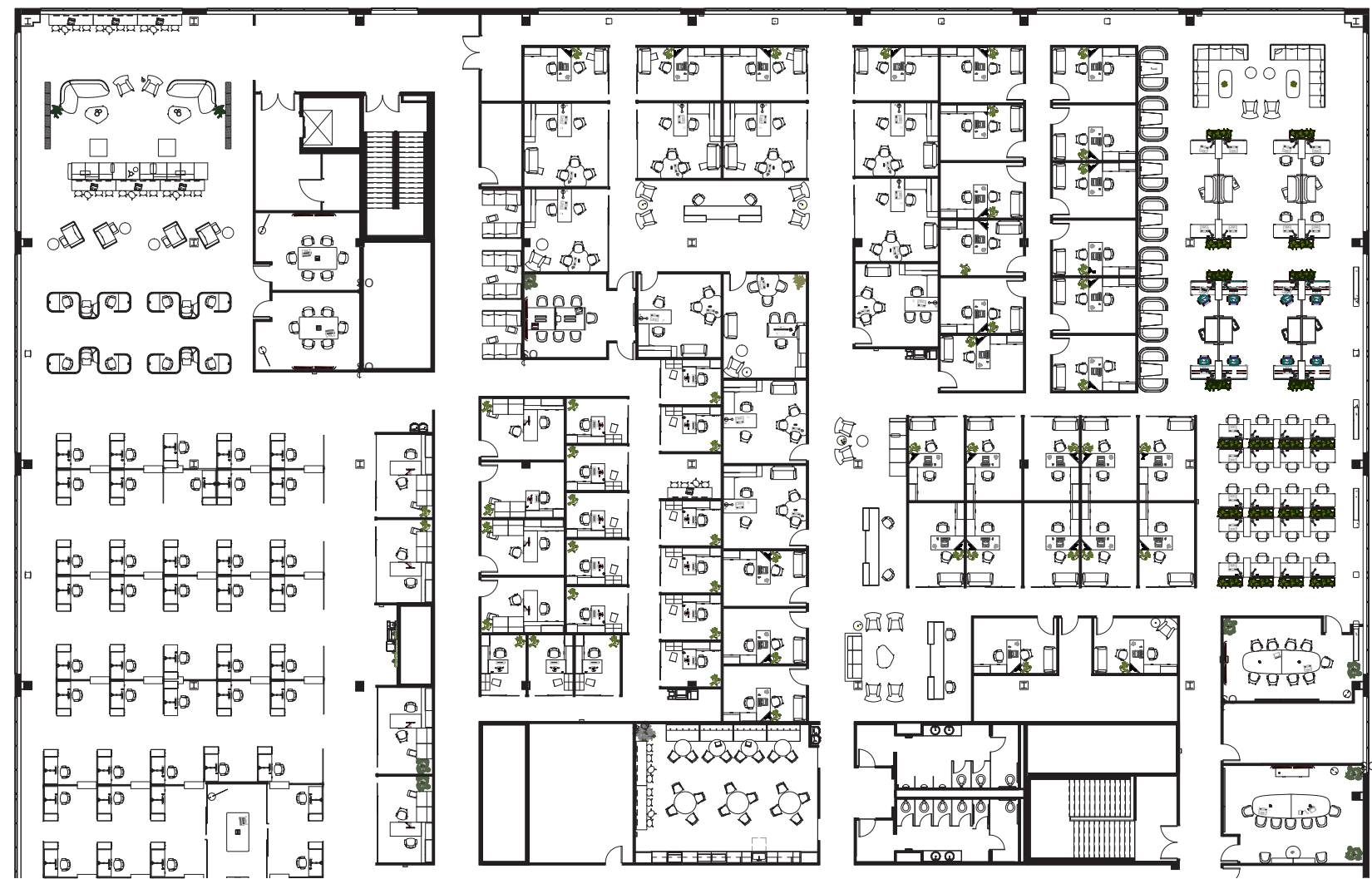
The Riverton Office Building houses the ICS department of The Church of Jesus Christ of Latter-Day Saints. Most of their employees currently work from home due to COVID. HR Manager Jim Miller hopes to renovate the 2nd and 4th floors to bring them back. Jim would like these two floor layouts to be more suited for team collaboration with flexible workspaces for hybrid employees.

Floor Plans

SECOND FLOOR

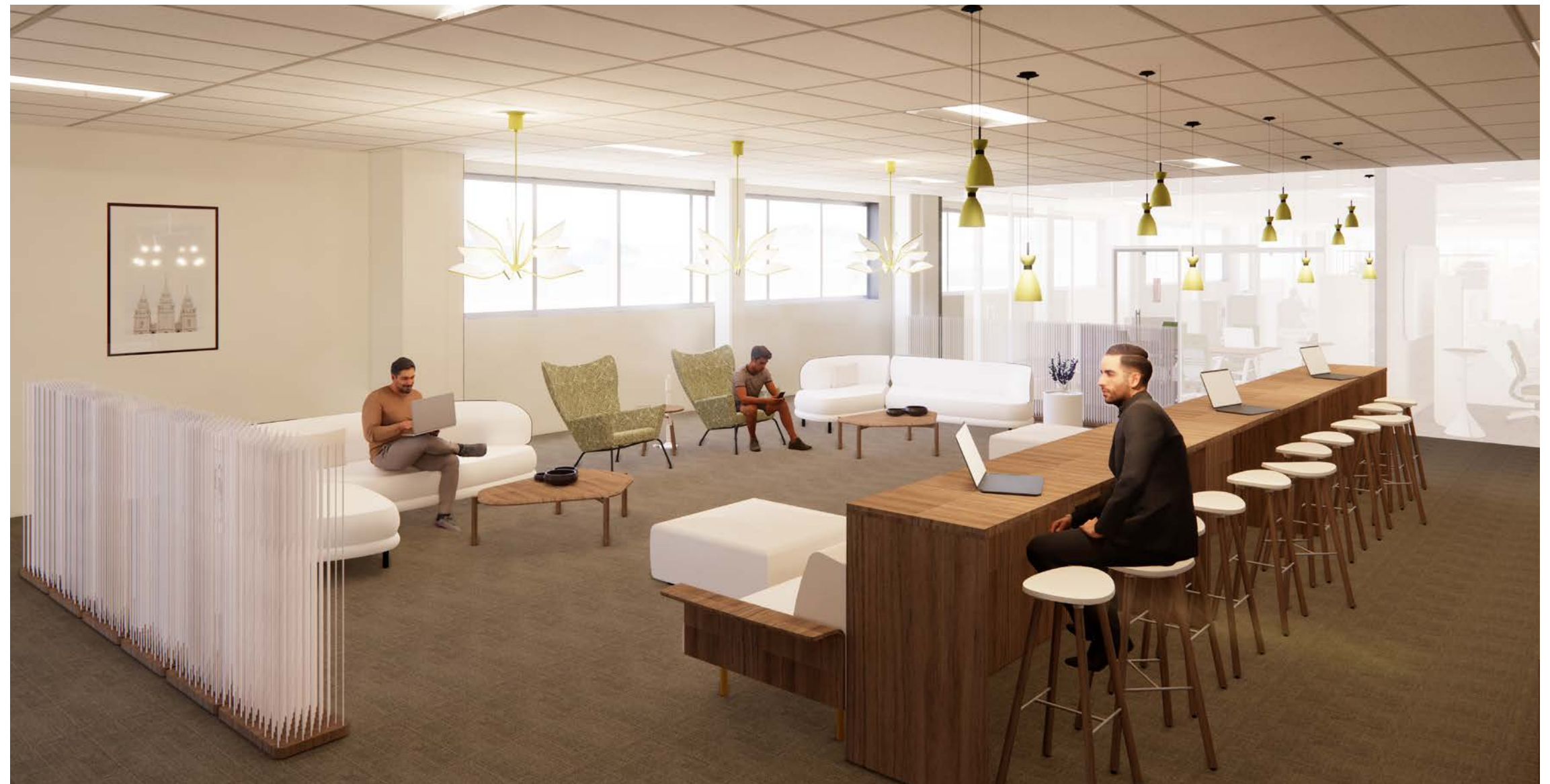
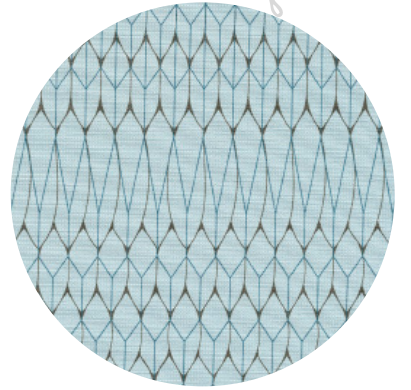
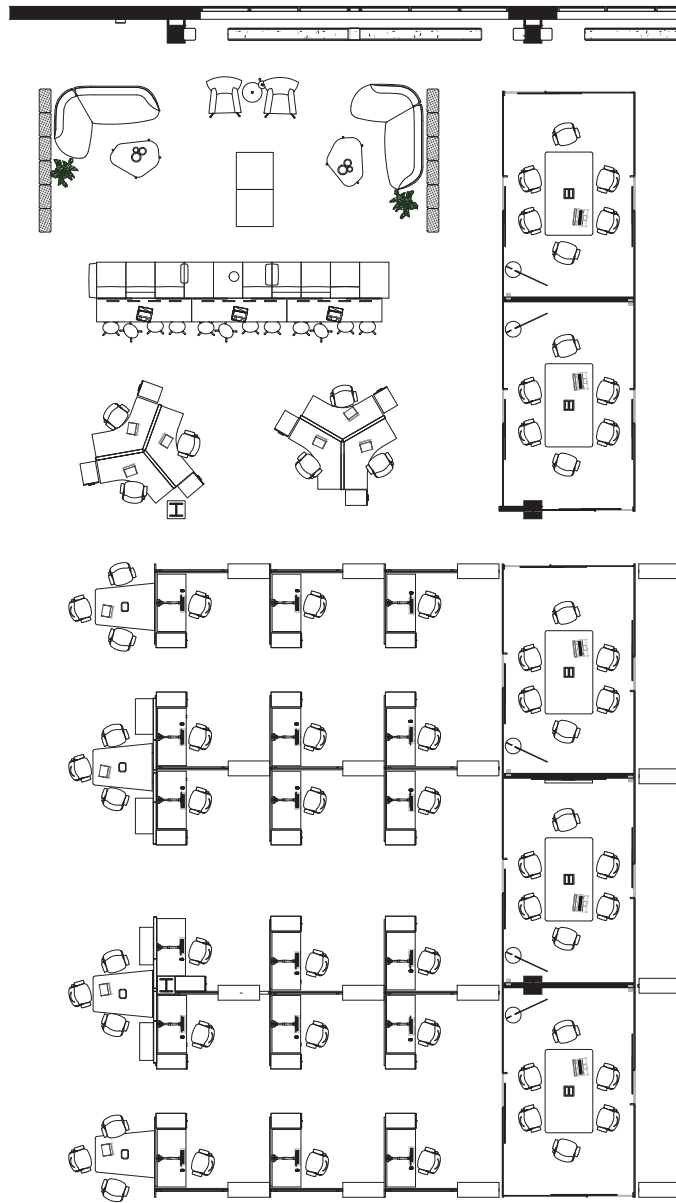


FOURTH FLOOR



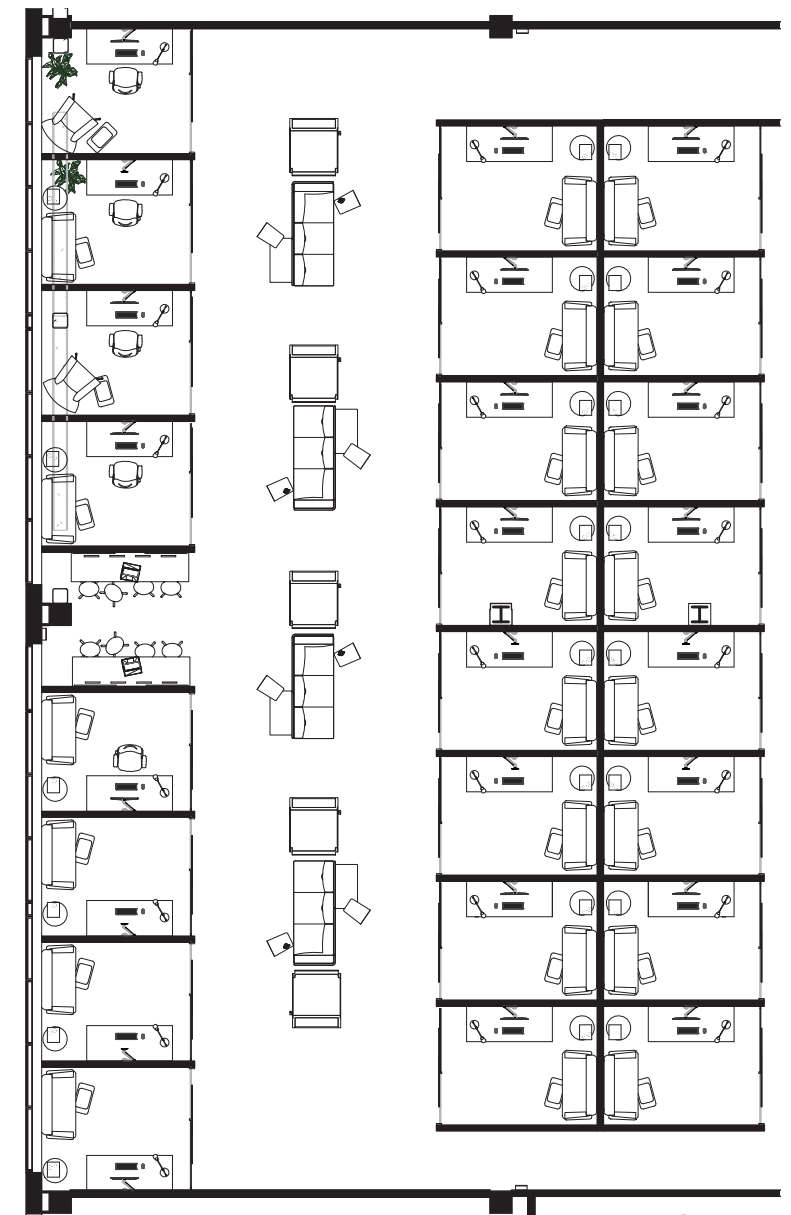
Lounge Areas

To address this Post-COVID workplace, resimmercial finishes are implemented to bring home to the office, providing the comfort and familiarity employees are used to. Lounge areas near windows bring exposure to daylight and respite from screens.



Work Pods

To more efficiently utilize work spaces, flexible work options are incorporated, taking advantage of natural light for the pods. By providing different sit-stand work positions, employees have the freedom to choose how and where they want to work.

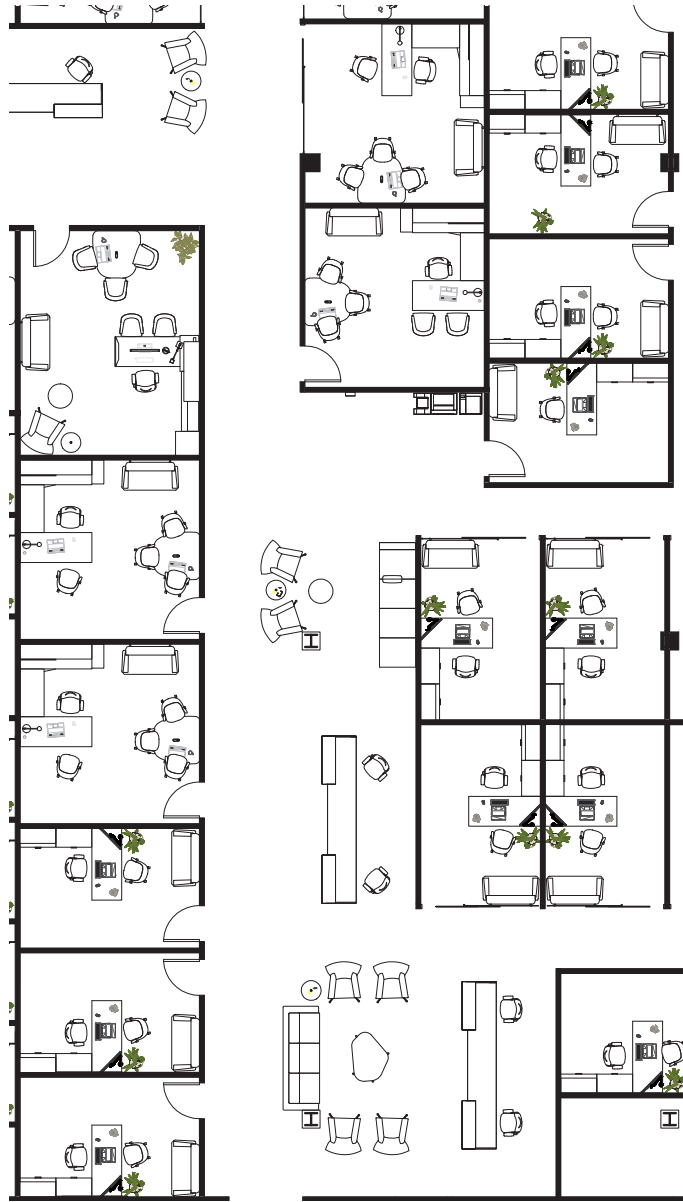


Wellness Rooms



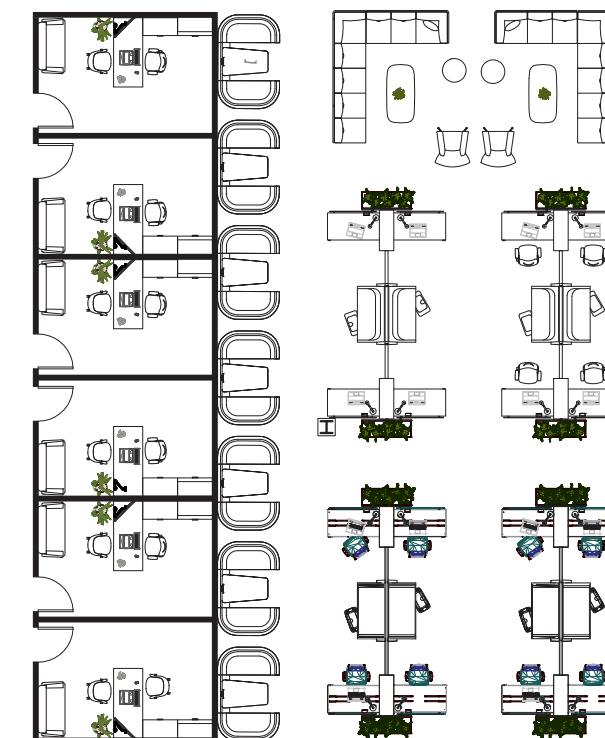
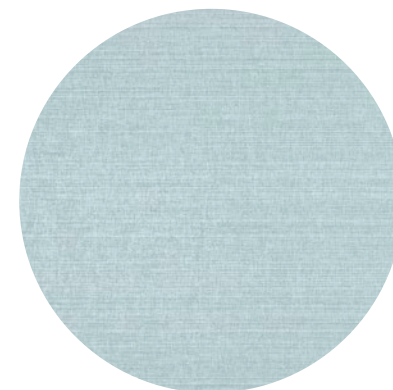
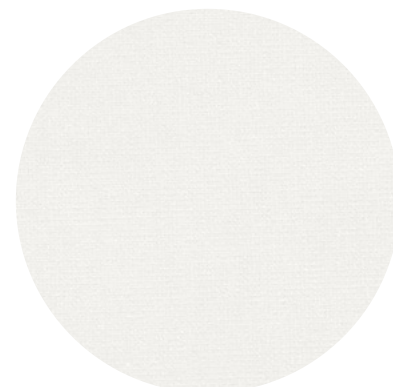
4th Fl. Reception

The redesign of the reception area features biophilic elements and finishes to help improve employee wellness and becomes a visual waypoint.





4th Fl. Work Space





Thank You

